



410 17th Street, Suite 1400
Denver, CO 80202
(720) 440-6100 phone
(720) 305-0804 fax

Bonanzacrk.com

December 12, 2017

State of Colorado
Oil and Gas Conservation Commission
1120 Lincoln Street, Suite 801
Denver, CO 80203

RE: Proposed Wellbore Spacing Unit
State North Platte F11-35-2XRLNB
Niobrara New Drill
NESW Section 26, Township 5N, Range 63W, 6th PM
Weld County, Colorado

Dear Director Lepore,

Bonanza Creek Energy Operating Company, LLC. ("Bonanza Creek") is planning to drill the above captioned well in accordance with the provisions of Colorado Oil and Gas Conservation Commission (COGCC) Rule 318A.e.

Bonanza Creek's proposed wellbore spacing unit consists of:

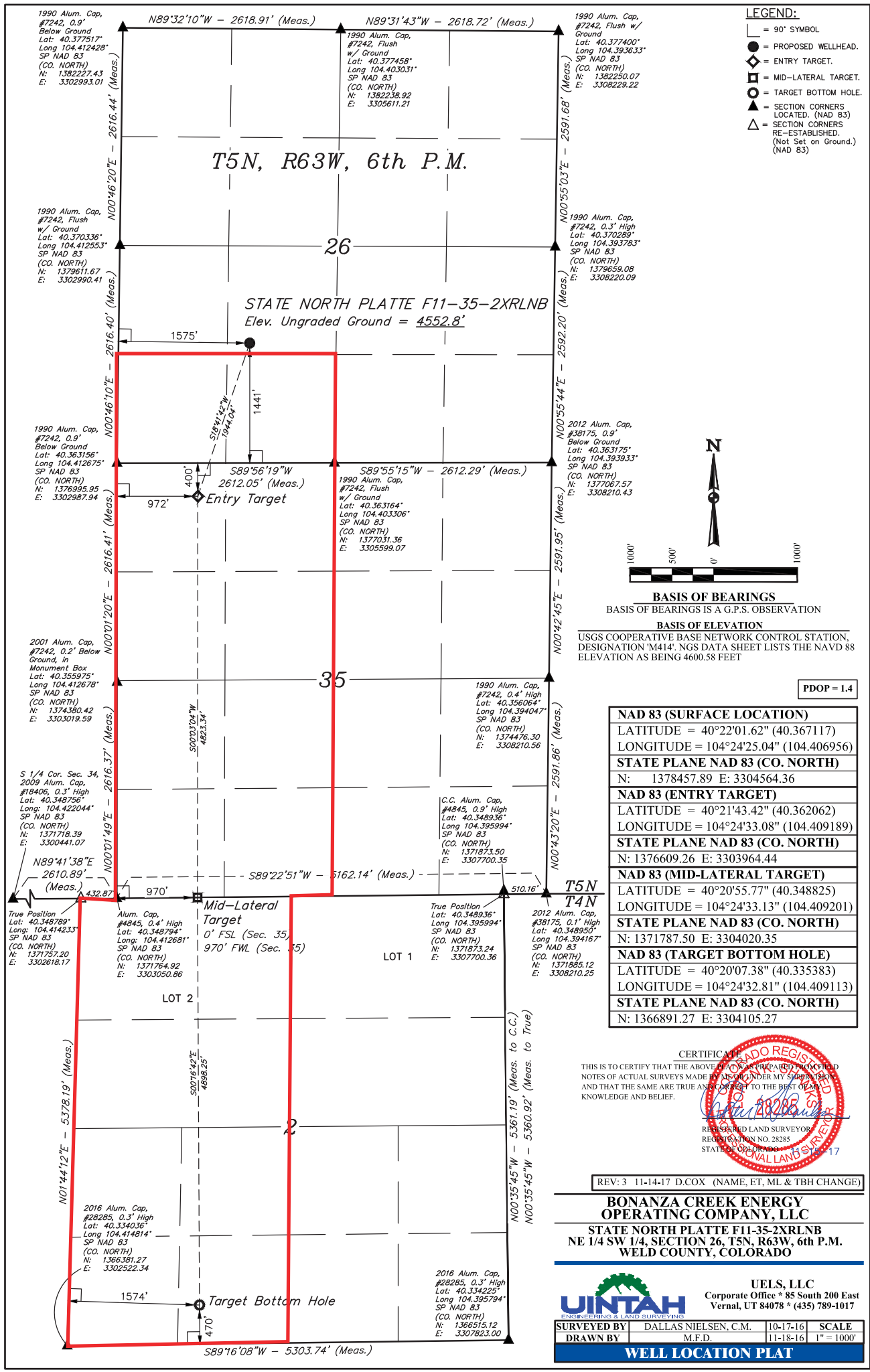
Township 5N, Range 63W (Weld County):
Section 26: S2SW
Section 35: W2
Township 4N, Range 63W (Weld County)
Section 2: W2

Total acres: 730ac

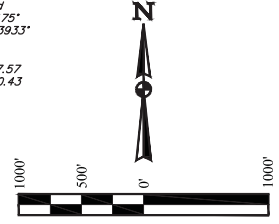
The 30 day notification time period has passed and we have not yet received any objections to such well locations or proposed spacing unit, therefore Bonanza Creek hereby requests the Director to approve the above mentioned well. Bonanza Creek respectfully requests the COGCC review the enclosed map illustrating the proposed wellbore spacing unit.

Regards,
Bonanza Creek Energy Operating Company, LLC.

Brian Dodek, P.G.
Manager – Environmental & Regulatory Compliance



- LEGEND:**
- 90° SYMBOL
 - PROPOSED WELLHEAD.
 - ENTRY TARGET.
 - MID-LATERAL TARGET.
 - TARGET BOTTOM HOLE.
 - SECTION CORNERS LOCATED. (NAD 83)
 - SECTION CORNERS RE-ESTABLISHED. (Not Set on Ground.) (NAD 83)



BASIS OF BEARINGS
BASIS OF BEARINGS IS A G.P.S. OBSERVATION

BASIS OF ELEVATION
USGS COOPERATIVE BASE NETWORK CONTROL STATION, DESIGNATION 'M414'. NGS DATA SHEET LISTS THE NAVD 88 ELEVATION AS BEING 4600.58 FEET

PDOP = 1.4

NAD 83 (SURFACE LOCATION)	
LATITUDE = 40°22'01.62" (40.367117)	
LONGITUDE = 104°24'25.04" (104.406956)	
STATE PLANE NAD 83 (CO. NORTH)	
N:	1378457.89 E: 3304564.36
NAD 83 (ENTRY TARGET)	
LATITUDE = 40°21'43.42" (40.362062)	
LONGITUDE = 104°24'33.08" (104.409189)	
STATE PLANE NAD 83 (CO. NORTH)	
N:	1376609.26 E: 3303964.44
NAD 83 (MID-LATERAL TARGET)	
LATITUDE = 40°20'55.77" (40.348825)	
LONGITUDE = 104°24'33.13" (104.409201)	
STATE PLANE NAD 83 (CO. NORTH)	
N:	1371787.50 E: 3304020.35
NAD 83 (TARGET BOTTOM HOLE)	
LATITUDE = 40°20'07.38" (40.335383)	
LONGITUDE = 104°24'32.81" (104.409113)	
STATE PLANE NAD 83 (CO. NORTH)	
N:	1366891.27 E: 3304105.27

CERTIFICATE OF SURVEY
THIS IS TO CERTIFY THAT THE ABOVE PLAT WAS PREPARED FROM FIELD NOTES OF ACTUAL SURVEYS MADE BY ME OR UNDER MY SUPERVISION, AND THAT THE SAME ARE TRUE AND CORRECT TO THE BEST OF MY KNOWLEDGE AND BELIEF.

[Signature]
REGISTERED LAND SURVEYOR
REGISTRATION NO. 28285
STATE OF COLORADO
JANUARY 17, 2017

REV: 3 11-14-17 D.COX (NAME, ET, ML & TBH CHANGE)

**BONANZA CREEK ENERGY
OPERATING COMPANY, LLC**
STATE NORTH PLATTE F11-35-2XRLNB
NE 1/4 SW 1/4, SECTION 26, T5N, R63W, 6th P.M.
WELD COUNTY, COLORADO

UINTEAH
ENGINEERING & LAND SURVEYING

UELS, LLC
Corporate Office * 85 South 200 East
Vernal, UT 84078 * (435) 789-1017

SURVEYED BY	DALLAS NIELSEN, C.M.	10-17-16	SCALE
DRAWN BY	M.E.D.	11-18-16	1" = 1000'

WELL LOCATION PLAT