

**LEGEND:**

 PROPOSED LOCATION



**BONANZA CREEK ENERGY  
OPERATING COMPANY, LLC**

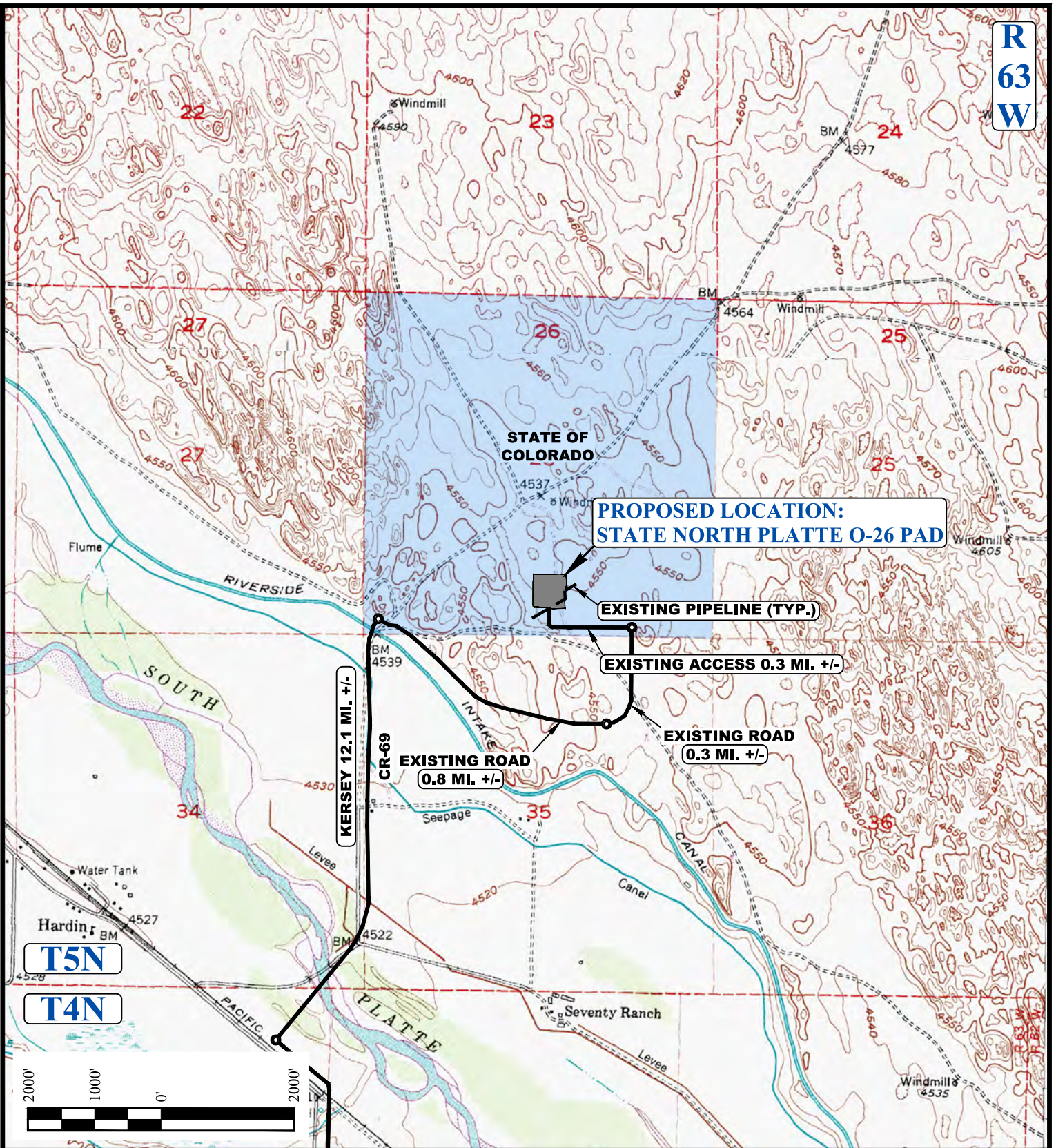
**STATE NORTH PLATTE O-26 PAD  
SW 1/4 SE 1/4, SECTION 26, T5N, R63W, 6th P.M.  
WELD COUNTY, COLORADO**

SURVEYED BY	D.N., C.M.	10-17-16	SCALE
DRAWN BY	L.C.S.	12-13-16	1 : 100,000
<b>ACCESS ROAD MAP</b>			<b>TOPO A</b>



**UELS, LLC**  
Corporate Office \* 85 South 200 East  
Vernal, UT 84078 \* (435) 789-1017

R  
63  
W



**PROPOSED LOCATION:  
STATE NORTH PLATTE O-26 PAD**

**EXISTING PIPELINE (TYP.)**

**EXISTING ACCESS 0.3 MI. +/-**

**KERSEY 12.1 MI. +/-**

**EXISTING ROAD  
0.8 MI. +/-**

**EXISTING ROAD  
0.3 MI. +/-**

NOTE: PARCEL DATA SHOWN HAS BEEN OBTAINED FROM VARIOUS SOURCES AND SHOULD BE USED FOR MAPPING, GRAPHIC AND PLANNING PURPOSES ONLY. NO WARRANTY IS MADE BY UINTAH ENGINEERING AND LAND SURVEYING (UELS) FOR ACCURACY OF THE PARCEL DATA.

**LEGEND:**

- EXISTING ROAD
- EXISTING FENCE
- AS SURVEYED SECTION LINE
- EXISTING PIPELINE



**BONANZA CREEK ENERGY  
OPERATING COMPANY, LLC**

**STATE NORTH PLATTE O-26 PAD  
SW 1/4 SE 1/4, SECTION 26, T5N, R63W, 6th P.M.  
WELD COUNTY, COLORADO**

SURVEYED BY	D.N., C.M.	10-17-16	SCALE
DRAWN BY	L.C.S.	12-13-16	1 : 24,000
<b>ACCESS ROAD MAP</b>			<b>TOPO B</b>



**UELS, LLC**  
Corporate Office \* 85 South 200 East  
Vernal, UT 84078 \* (435) 789-1017