

Date: 10/26/12
 Preparer: twm
 Lease #: 8023

Wellname: **TEMPEL 1-13**
 Field: McClave, CO
 County: Bent State: CO
 API: 05-011-06148

Footage: (NE SW SW) 990 FSL, 990 FWL
 Sec: 13
 Twp: 21S
 Rge: 48W

KB: 3834
 GL: 3829
 Diff: 5

CASING

Size	Weight	Grade	Depth	Cement	Date Cmt'd	Comment
8 5/8			426	210	8/28/85	
4 1/2	10.5 #	J-55	4885	175	9/6/85	TOC-CBL: 4058

PERFORATIONS

Formation	Top	Btm	SPF	# of holes	Date	Status
Morrow	4683	4692	4	36	10/8/85	plugged

Well Bore Diagram Plugged

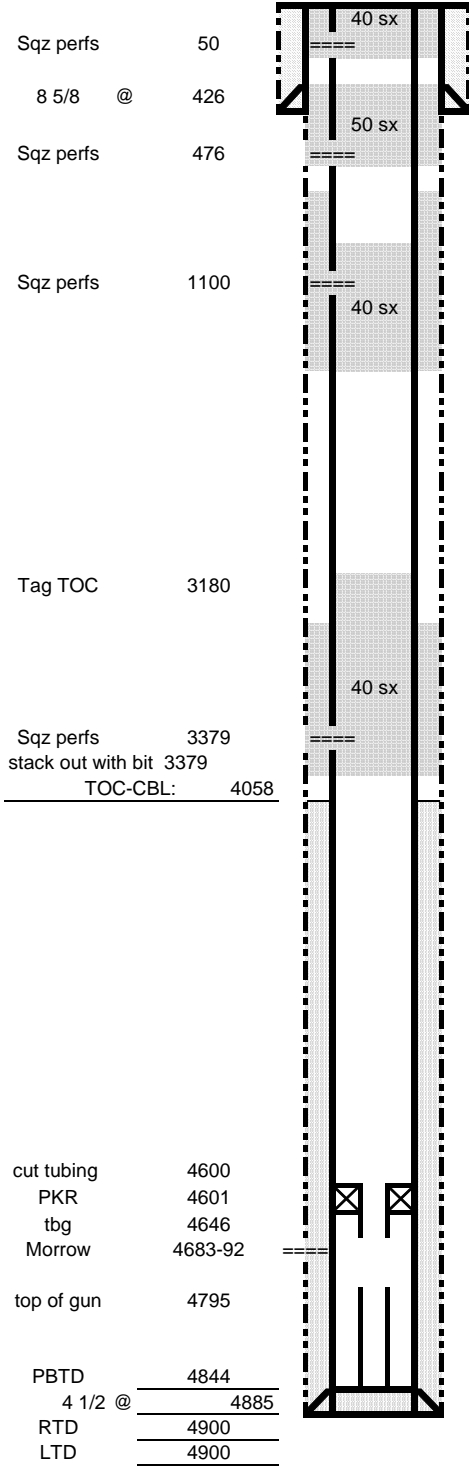
11/29/17 P&A Day #1 - Redwater Oilfield RO's dug out wellhead for Bradenhead test, 2 psi, 150 psi tbg. Blow down well. MIRU HSI #717. RU on 2 3/8 tbg couldn't release pkr, waited for pump truck to kill well. RU The Hub pump truck @ tbg, pump 30 BSW. RU Peak Wireline @ 2 3/8 tbg. RIH cut tbg off above pkr @ 4600'. TOH & laydown 4 x 6 x 8 x 8 x 2 3/8 subs, 147 jts tbg, 6' tbg sub, 1 jt tbg. Fill hole with water.

11/30/17 P&A Day #2- RU Peak WireLine @ 4 1/2 Csg. RIH w/CIBP stacked out @ 1720', worked for 30 min, TOH. TIH 2 3/8 tbg stacked out @ 1720' worked tbg. Tbg stacking out while running in hole. Stacked out @ 4042' worked tbg for 1 hr. Laydown 4 jts. RU Consolidated pump truck on tbg, 2000 Psi unplugged tbg. TOH w/tbg. TIH w/ 3 3/4 bit, 54 jts tbg. SI Well

12/1/17 P&A Day #3 - RU Codell Power Swivel, TIH 3 3/4 & 2 3/8 tbg to bridge 1736' drill out. TIH to 3224' drill out & lost circulation, regain circulation. TIH to 3279' tried to drill out, lost circulation, regain circulation. RD Power Swivel. TOH to 1700', TIH to 3379'. TOH w/109 jts 3 3/4 bit. SI Well,

12/4/17 P&A Day #4 - RU Peak Wireline @ 4 1/2 csg. RIH perforate 3379'. TIH 2 3/8 tbg to 3375'. RU Consolidated Pump Truck @ tbg, mix, pump, displace 40 sks class A cmt w/2% caclz. 4 BPM, 500 Psi. TOH, laydown tbg. RIH tagged cmt 3180'. RU Peak Wireline @ 4 1/2 csg. RIH perforate 1100'. RU Consolidated Pump Truck @ 4 1/2 csg mix, pump, displace 40 sks 60/40 + 4% gel, leave 100' cmt. in csg. RU Peak Wireline @ 4 1/2 csg. RIH perforate 476'. RU Consolidated Pump Truck @ 4 1/2 csg, mix, pump, displace 50 sks 60/40 + 4% gel, leave 100' cmt. In csg. RU Peak Wireline @ 4 1/2 csg. RIH perforate 50'. RU Consolidated Pump Truck @ 4 1/2 csg, mix, pump, 40 sks. 60/40 + 4% gel. Circulate cmt to surface to steel tank.

12/7/17 Cut casing 4 ft. berlow GL and weld plate on.



Surface equipment:
 (1) Steel SWT 200 bbl
 (1) separator 16" OD x 6'