



SRC ENERGY

Operator: SRC Energy
Well Name: Hergert 8-43
Legal: SWSE, Section 8, Township 6N, Range 66W
Location: Weld County, CO
API: 05-123-22693

Deepest Water Well
Within 1 Mile = 675'





Wellbore History

Spud Date: 3/26/2005
Surf Csg: 8.625", 24# @ 839' – 580 sx
Prod Csg: 4.5", 11.6# @ 7405' – 145 sx
S.C. 1.1: 0'-4000' – 625 sx
TOC: 6430' (CBL) & 0' (CALC)
Perfs: NBRR: 6908'-7058'
CODL: 7236'-7256'

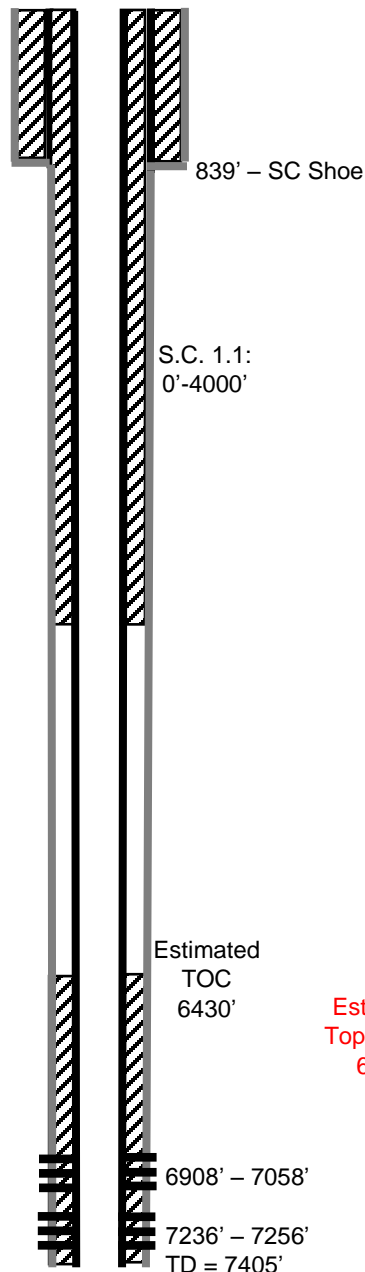
P&A Procedure

Set CIBP @ 6833'
Run CBL, ensure adequate remedial cement
Set 13 sx on top of CIBP (132' plug)
Set 29 sx @ 3800' (300' plug)
Pmp 95 sx @ 1000' to surface

Key

-  Existing Cement Coverage
-  CICR
-  Cement Pumped
-  CIBP

Current



Proposed

