



**WELLSBORE DIAGRAM**  
**Crestone Peak Resources**

CURRENT

10/26/2017

JR

Woolley 42-7

Lat, Long: 40.067498°, -105.039834°

SENE Sec. 7-T1N-R68W

Vertical Well

Weld County, CO

Formation Tops

MD

API 05-123-23185

K.B. = 5,052'

G.L. = 5,040'

12'

Surface cement: Surface-859'  
w/ 675 sx cmt

Base of Fox Hills (DWR)

406'

8-5/8" 24# csg set @ 859' in 12-1/4" OH

Base of Upper Pierre

1,491'

Sussex

4,486'

2nd Stage Production Cement 4090-5401' (06/08/2006 CBL)  
w/ 350 sx cmt

Stage Tool @ 5401'

1st Stage Production Cement: 6877'-TD (06/08/2006 CBL)  
w/ 390 sx cmt

Landed Tbg @ 7410'  
234 jts tbg, XN Nipple, 4' Perf Sub, 6' Tubing Pup, Tap Bull Plug

Niobrara

7,440'

Perfs: 7547-7575'

Frac'd w/250,460# sand and 166,684 gal fluid

Codell

7,787'

Perfs: 7787-7807'

Frac'd w/250,100# sand and 112,602 gal fluid

J Sand

8,230'

CIBP @ 8200' w/5sx cement on top

Perfs: 8230-8248'

Frac'd w/250,820# sand and 157,080 gal fluid

4-1/2" 11.6# csg set @ 8375' in 7-7/8" OH

TD @ 8381'

**WELL HISTORY / NOTES:**

Spud 05/29/2006 - originally completed J Sand, Codell & Niobrara - all comingled  
Offset Mitigation 04/2017 - TA J Sand, upgrade W/H to 5k, SI

\*\*\* Do not confuse with KPK's Woolley 42-7 (50' to NW of ours)



**WELLBORE DIAGRAM**  
**Crestone Peak Resources**

PROPOSED

12/29/2017

J Ries

Woolley 42-7

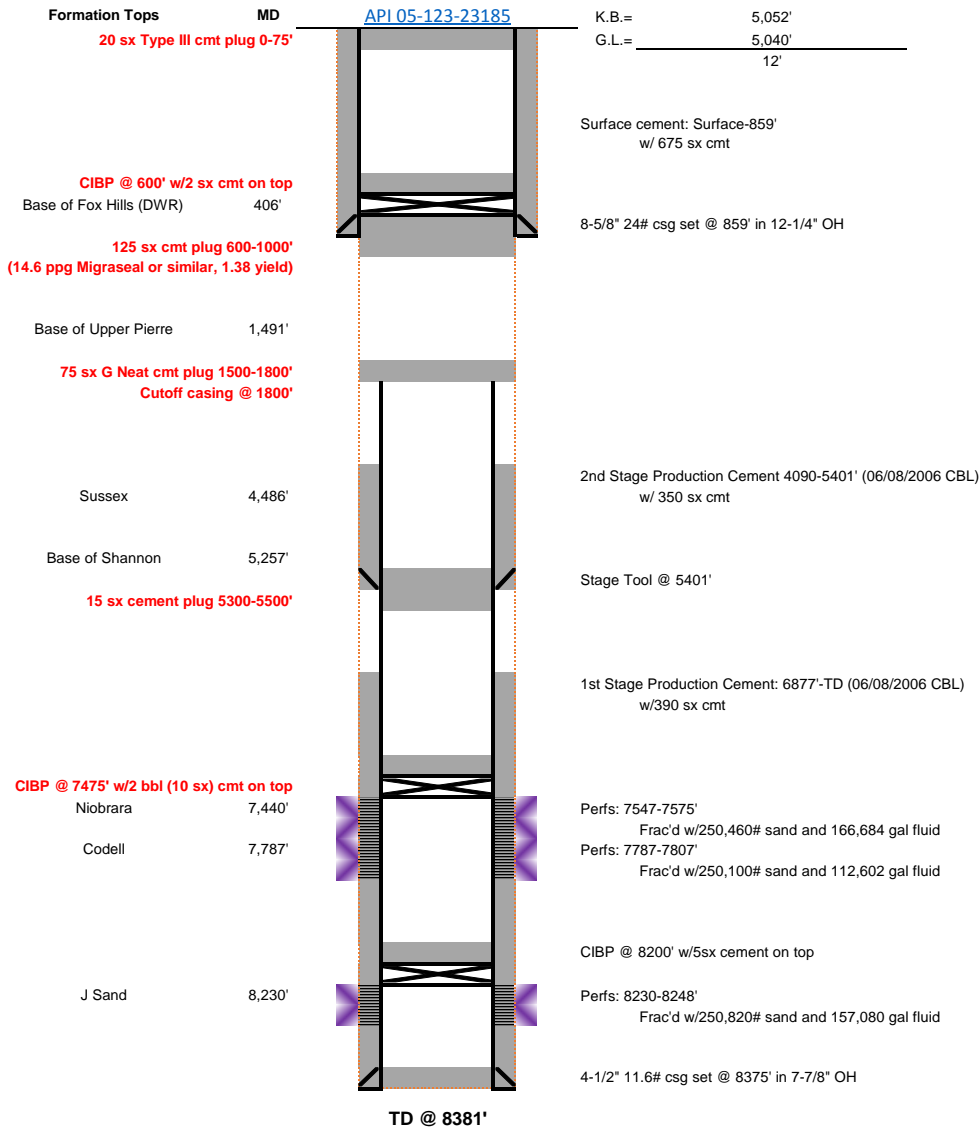
Lat, Long: 40.067498°, -105.039834°

SENE Sec. 7-T1N-R68W

Vertical Well

Weld County, CO

API 05-123-23185



**WELL HISTORY / NOTES:**

Spud 05/29/2006 - originally completed J Sand, Codell & Niobrara - all comingled  
Offset Mitigation 04/2017 - TA J Sand, upgrade W/H to 5k, SI

\*\*\* Do not confuse with KPK's Woolley 42-7 (~50' to NW of ours)