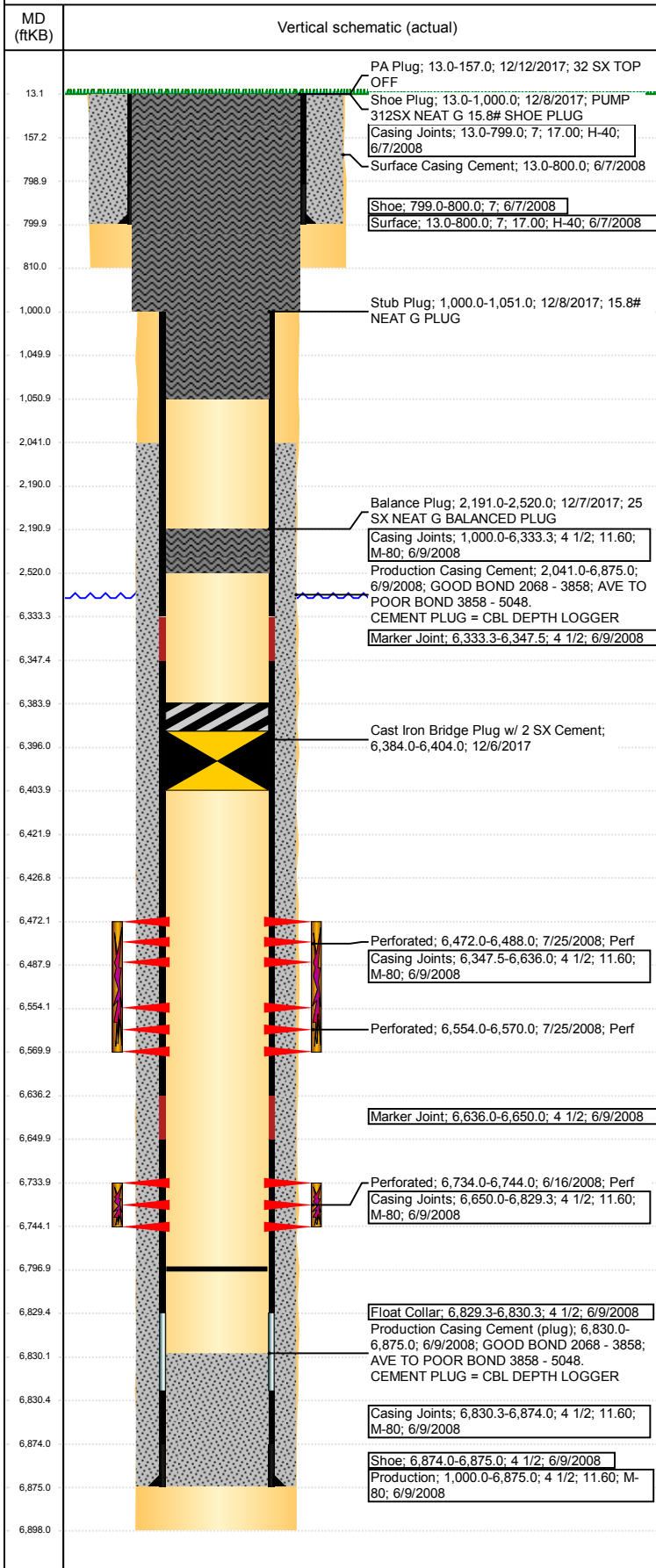


Well Name: WELLS RANCH USX AA35-08

VERTICAL - ORIGINAL HOLE, 12/30/2017 1:37:33 PM



Well Header

API 05-123-25883	Business Unit DJ BASIN	District 15	Well Config VERTICAL
Original KB Elevation (ft) 4,784	KB - GL / MSL (ftKB) 13.00	Spud Date 6/7/2008	P & A Date 12/6/2017

Comment

LOGGING COMPANIES: THIS WELL HAS A PARTNER - SEE SPECIAL INSTRUCTIONS BELOW!!

Directions To Well

From the intersection of WCR 68 and WCR 67, go East 2/10ths of a mile, then South 1.75 miles, then East 1.25 miles, then South 5/10ths of a mile, then Southeast into location

Congressional Location

Quarter 3 SE	Quarter 4 NE	Section 35	Township 6	Twnshp N/S Dir N	Range 63	Range E/W Dir W
-----------------	-----------------	---------------	---------------	---------------------	-------------	--------------------

Bottom Hole Location

North-South Distance (ft)	From N or S Line	East-West Distance (ft)	From E or W Line
---------------------------	------------------	-------------------------	------------------

Plug Back Total Depths

Date	Depth (ftKB)	Method	Com
6/9/2008	6,830.0	CASING TALLY	FLOAT COLLAR
6/16/2008	6,807.0	CASED HOLE LOG	CBL DEPTH LOGGER
8/27/2008	6,814.0	TUBING TALLY	DRILL UP CIFT P W/ SHOE AND CHASE DOWN T...
7/8/2014	6,797.0	TAG	DRILL COMP BP & PUSH TO BOTTOM 6797'

Wellbore Sections

Section Des	Size (in)	Act Top, MD (ftKB)	Act Btm, MD (ftKB)
SURFACE	9 7/8	13	810
PRODUCTION	6 1/4	810	6,898

Zone Statuses

Zone Name	Status Date	Status	Fluid Type	Job	Prod Method
NIOBRARA	7/28/2008	PR		DRILLING/CO...	
NIOBRARA	2/16/2010	PR	Water		Flowing
NIOBRARA	12/6/2017	P&A	Water	ABANDON WE...	
CODELL	7/28/2008	PR		DRILLING/CO...	
CODELL	2/16/2010	PR	Water		Flowing
CODELL	12/7/2015	PR			
CODELL	4/13/2016	PR			
CODELL	12/6/2017	P&A		ABANDON WE...	

Casing Strings

Surface, 800.0ftKB

Casing Description	Run Date	OD (in)	Wt/Len (l...)	Grade	Top, MD (ft...)	MD (ftKB)
Surface	6/7/2008	7	17.00	H-40	13.0	800.0

Production, 6,875.0ftKB

Casing Description	Run Date	OD (in)	Wt/Len (l...)	Grade	Top, MD (ft...)	MD (ftKB)
Production	6/9/2008	4 1/2	11.60	M-80	13.0	6,875.0

Cement

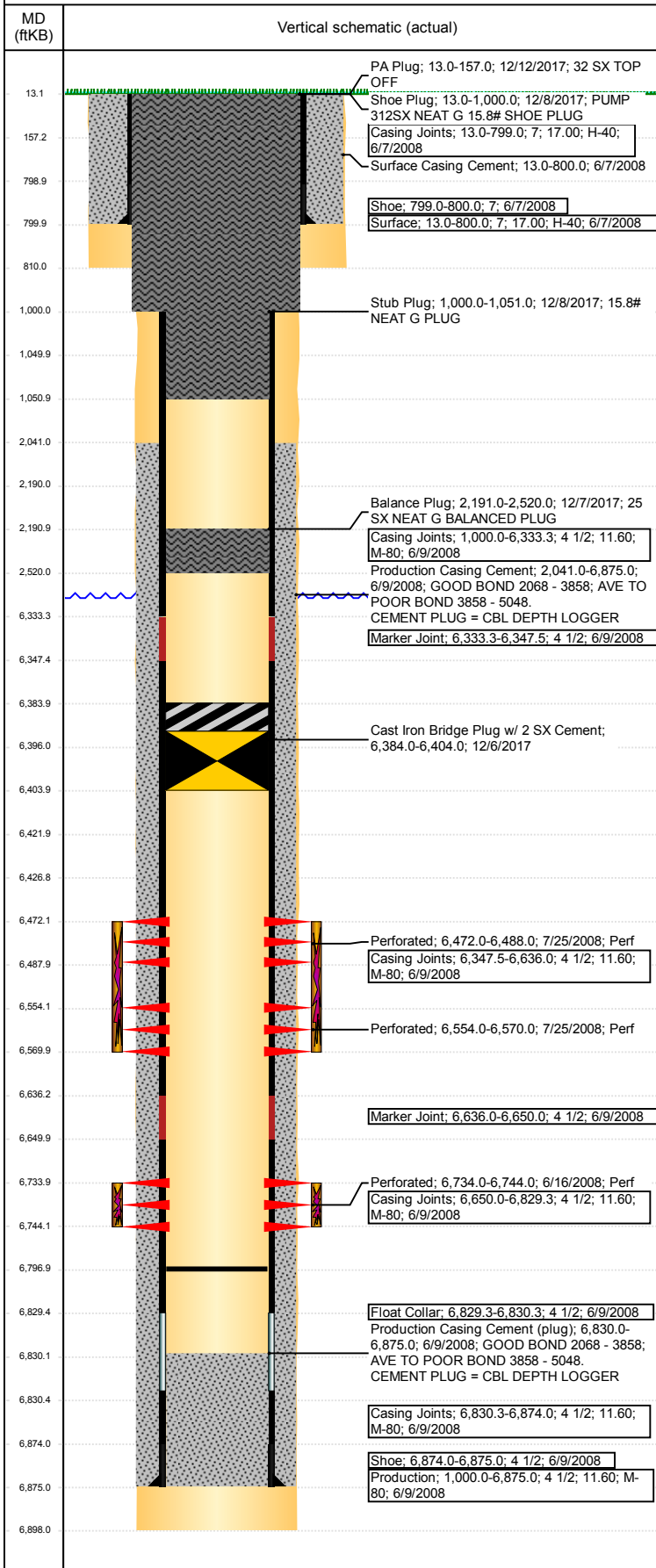
Description	Top Depth (ftKB)	Bottom Depth (ftKB)
Surface Casing Cement	13.0	800.0
Production Casing Cement	2,041.0	6,875.0
Dump Bail	6,396.0	6,422.0
Balance Plug	2,190.0	2,520.0
Balance Plug	1,000.0	1,050.0
Shoe Plug	13.0	1,000.0
Balance Plug	2,191.0	2,520.0
Stub Plug	1,000.0	1,051.0
Shoe Plug	13.0	1,000.0
PA Plug	13.0	157.0

Tubing Strings

Tubing Description	Run Date	String...	ID (in)	Wt (lb/ft)	Grade	Len (ft)	Set De...
Tubing - Production	8/28/2008	2 3/8	2.00	4.70	J-55	6,710.90	

Well Name: WELLS RANCH USX AA35-08

VERTICAL - ORIGINAL HOLE, 12/30/2017 1:37:33 PM



Tubing Components							
Item Des	OD (in)	Wt (lb/ft)	Grade	Jts	Len (ft)	Btm (ftKB)	Btm (TVD) (ftKB)
Tubing Pup Joint	2 3/8	4.70	J-55	2	20.00	33.0	
Tubing	2 3/8	4.70	J-55	218	6,689.40	6,722.4	
Pump Seating Nipple	2 3/8			1	1.10	6,723.5	
Notched collar	3 1/16			1	0.40	6,723.9	
Tubing Description	Run Date	String...	ID (in)	Wt (lb/ft)	Grade	Len (ft)	Set De...
Tubing - Workstring	5/7/2014	2 3/8	2.00	4.60	J-55	5,788.00	

Tubing Components							
Item Des	OD (in)	Wt (lb/ft)	Grade	Jts	Len (ft)	Btm (ftKB)	Btm (TVD) (ftKB)
Tubing	2 3/8	4.60	J-55	183	5,787.00	5,843.0	
Blade Bit	3 7/8			1	1.00	5,844.0	
Tubing Description	Run Date	String...	ID (in)	Wt (lb/ft)	Grade	Len (ft)	Set De...
Tubing - Production	7/9/2014	2 3/8	2.00	4.70	J-55	6,691.27	

Tubing Components							
Item Des	OD (in)	Wt (lb/ft)	Grade	Jts	Len (ft)	Btm (ftKB)	Btm (TVD) (ftKB)
Pup Joint	2 3/8	4.70	J-55	1	10.00	23.0	
EUE 8rd Tubing	2 3/8	4.70	J-55	218	6,679.57	6,702.6	
Pump Seating Nipple	2 3/8	1.10	X	1	1.10	6,703.7	
Notched collar	2 3/8			1	0.60	6,704.3	

Other In Hole				
Run Date	Des	OD (in)	Top (ftKB)	Btm (ftKB)
8/15/2017	Cast Iron Bridge Plug	3.99	6,422.0	6,427.0
12/6/2017	Cast Iron Bridge Plug w/ 2 SX Cement	4	6,384.0	6,404.0

Logs			
Date	Type	Top, MD (ftKB)	Btm, MD (ftKB)
6/9/2008	Caliper/Comp. Density/Neutron/GR/SP/ML	2,675.0	6,878.0
6/9/2008	DIL/GR/SP/Caliper	800.0	6,898.0
6/16/2008	CBL/CCL/GR	1,814.0	6,805.0
8/1/2011	GYRO	13.0	6,700.0

Perforation Data					
Linked Zone	Bnch/St g	Sum of Entered Shot Total	Top (ftKB)	Btm (ftKB)	Date
NIOBRARA, ORIGINAL HOLE	A	64	6,472.00	6,488.00	7/25/2008
NIOBRARA, ORIGINAL HOLE	B	64	6,554.00	6,570.00	7/25/2008
CODELL, ORIGINAL HOLE		40	6,734.00	6,744.00	6/16/2008
Total (Sum)		168			

Stimulation Intervals		
Start Date	Primary Job Type	
7/25/2008	DRILLING/COMPLETION - ORIGINAL	
Technical Result	Tech Result Details	Tech Result Note
Success	According to Plan	
Comment		
CODELL: REVERSE STEP RATE RESULTS PO 15 NWB 263PSI WB 272PSI PPF 164PSI FOR A TOTAL OF 699PSI OF FRICTION PRE JOB 5 MINUTE OF 2447 RAISED TREATMENT RATE TO 22 BPM TREATMENT WENT WELL HAD SOME ISSUES WITH THE IFS FREEZING UP WHILE PUMPING AVG VISC 28.7 CPS AVG TEMP 74.5F AVG PH 10.18 POST JOB 5 MINUTE OF 2492 PSI		
Start Date	Primary Job Type	
7/25/2008	DRILLING/COMPLETION - ORIGINAL	
Technical Result	Tech Result Details	Tech Result Note
Success	According to Plan	
Comment		
NIOBRARA: WATER WAS TIGHT RAN 1PSA 2 PSA AND THE FIRST 3 PSA STAGES 0.1 PSA HIGH TREATMENT WENT WELL NO ISSUES TO REPORT AVG VISC 23.6 CPS AVG TEMP 75.4F AVG PH 10.22 POST JOB 5 MINUTE 2755 PSI		