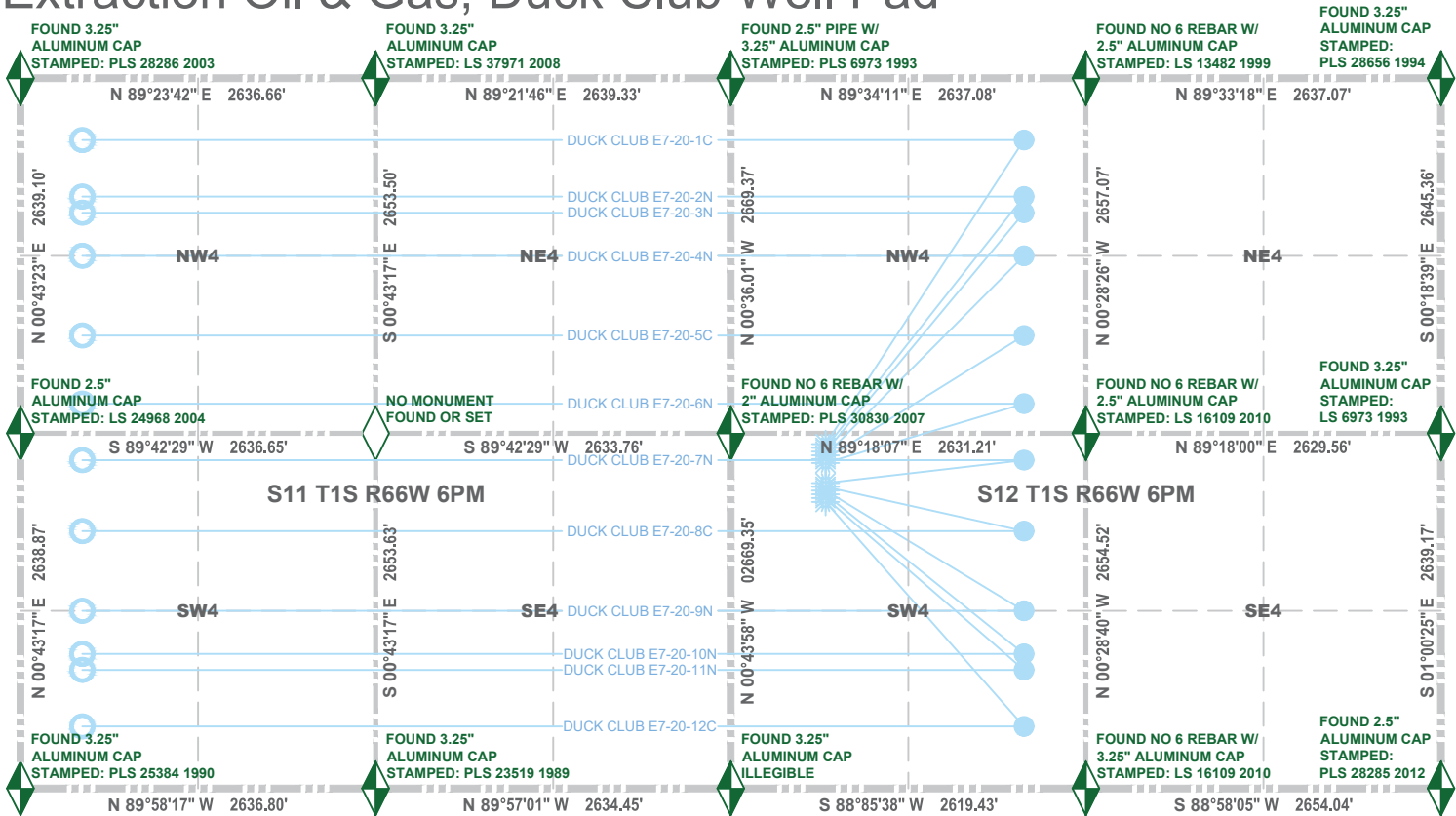


# Multi-Well Plan

## Extraction Oil & Gas; Duck Club Well Pad



WELL LOCATION	HEEL	TOE	SURFACE HOLE	LANDING POINT	BOTTOM HOLE
DUCK CLUB E7-20-1C	N-S: 460 FNL	N-S: 460 FNL	LAT N39.97945°	LAT N39.98567°	LAT N39.98565°
	E-W: 2180 FWL S12	E-W: 460 FWL S11	LONG W104.73093°	LONG W104.72564°	LONG W104.75061°
DUCK CLUB E7-20-2N	N-S: 880 FNL	N-S: 880 FNL	LAT N39.97937°	LAT N39.98452°	LAT N39.98449°
	E-W: 2180 FWL S12	E-W: 460 FWL S11	LONG W104.73093°	LONG W104.72564°	LONG W104.75060°
DUCK CLUB E7-20-3N	N-S: 1000 FNL	N-S: 1000 FNL	LAT N39.97930°	LAT N39.98419°	LAT N39.98417°
	E-W: 2180 FWL S12	E-W: 460 FWL S11	LONG W104.73094°	LONG W104.72564°	LONG W104.75060°
DUCK CLUB E7-20-4N	N-S: 1320 FNL	N-S: 1320 FNL	LAT N39.97922°	LAT N39.98331°	LAT N39.98329°
	E-W: 2180 FWL S12	E-W: 460 FWL S11	LONG W104.73094°	LONG W104.72564°	LONG W104.75060°
DUCK CLUB E7-20-5C	N-S: 1913 FNL	N-S: 1913 FNL	LAT N39.97914°	LAT N039.98168°	LAT N39.98166°
	E-W: 2180 FWL S12	E-W: 460 FWL S11	LONG W104.73095°	LONG W104.72564°	LONG W104.75059°
DUCK CLUB E7-20-6N	N-S: 2420 FNL	N-S: 2420 FNL	LAT N39.97907°	LAT N39.98029°	LAT N39.98027°
	E-W: 2180 FWL S12	E-W: 460 FWL S11	LONG W104.73095°	LONG W104.72563°	LONG W104.75058°
DUCK CLUB E7-20-7N	N-S: 2440 FSL	N-S: 2440 FSL	LAT N39.97865°	LAT N39.97904°	LAT N39.97911°
	E-W: 2180 FWL S12	E-W: 460 FWL S11	LONG W104.73097°	LONG W104.72563°	LONG W104.75057°
DUCK CLUB E7-20-8C	N-S: 1913 FSL	N-S: 1913 FSL	LAT N39.97858°	LAT N39.97759°	LAT N39.97766°
	E-W: 2180 FWL S12	E-W: 460 FWL S11	LONG W104.73098°	LONG W104.72562°	LONG W104.75056°
DUCK CLUB E7-20-9N	N-S: 1320 FSL	N-S: 1320 FSL	LAT N39.97850°	LAT N39.97596°	LAT N39.97603°
	E-W: 2180 FWL S12	E-W: 460 FWL S11	LONG W104.73098°	LONG W104.72561°	LONG W104.75056°
DUCK CLUB E7-20-10N	N-S: 1000 FSL	N-S: 1000 FSL	LAT N39.97842°	LAT N39.97509°	LAT N39.97515°
	E-W: 2180 FWL S12	E-W: 460 FWL S11	LONG W104.73099°	LONG W104.72561°	LONG W104.75056°
DUCK CLUB E7-20-11N	N-S: 880 FSL	N-S: 880 FSL	LAT N39.97835°	LAT N39.97476°	LAT N39.97482°
	E-W: 2180 FWL S12	E-W: 460 FWL S11	LONG W104.73099°	LONG W104.72561°	LONG W104.75055°
DUCK CLUB E7-20-12C	N-S: 460 FSL	N-S: 460 FSL	LAT N39.97827°	LAT N39.97360°	LAT N39.97367°
	E-W: 2180 FWL S12	E-W: 460 FWL S11	LONG W104.73100°	LONG W104.72560°	LONG W104.75054°

LEGEND

SURFACE HOLE LOCATION

WELL DIRECTION

LANDING POINT

FOUND MONUMENT

BOTTOM HOLE LOCATION

CALCULATED POSITION



PREPARED BY:

Manhard CONSULTING

FIELD DATE:

12/12/17

DRAWING DATE:

12/12/17

DRAWN BY:

SKY

CHECKED BY:

AMM

PARCEL ID:

0156900000278

SURFACE LOCATION:

NW 1/4, SW 1/4, SEC 12, T 1S, R 66W

ADAMS COUNTY, COLORADO

PREPARED FOR:

EXTRACTION Oil & Gas