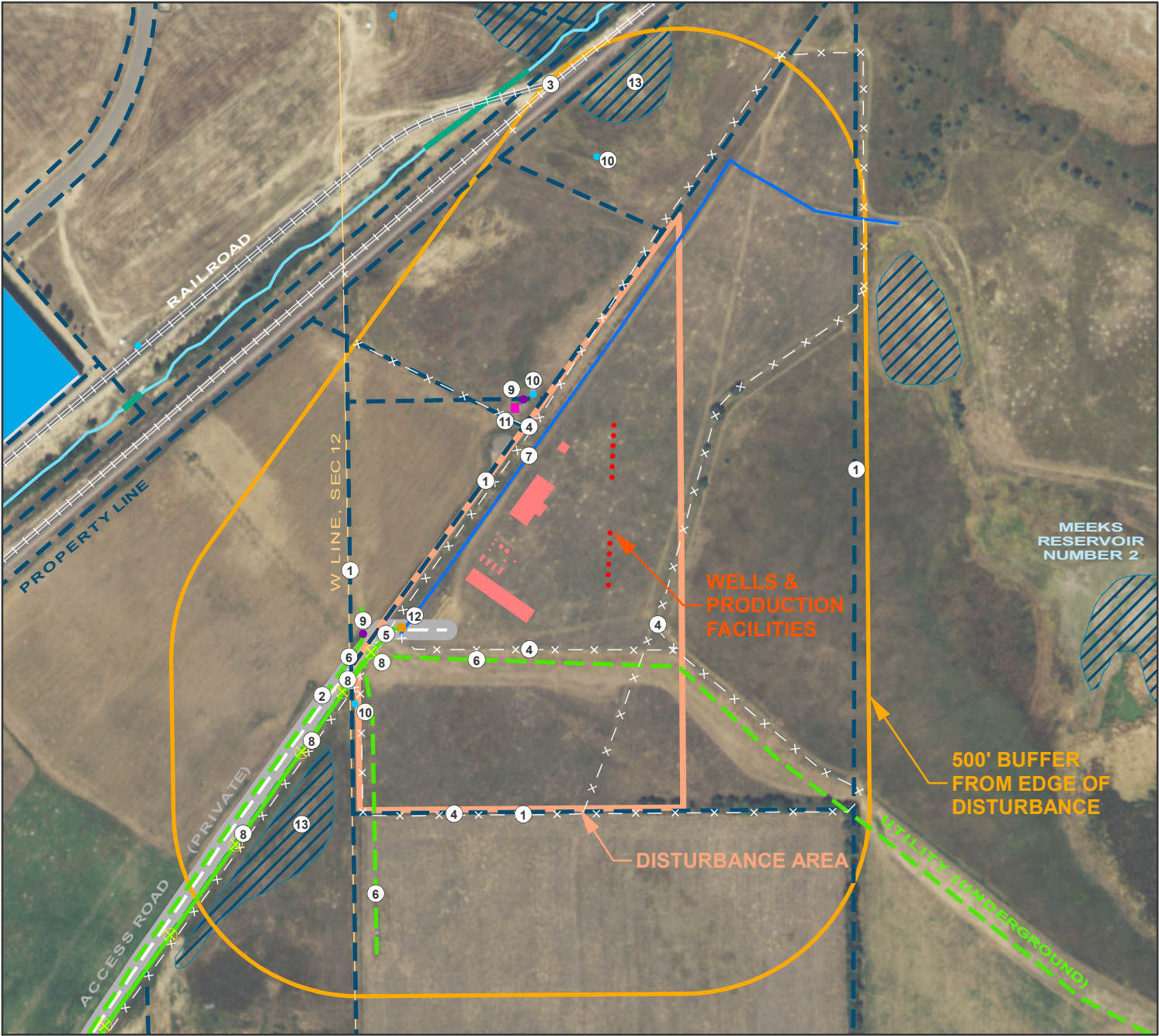


Location Drawing

Extraction Oil & Gas; Duck Club Well Pad

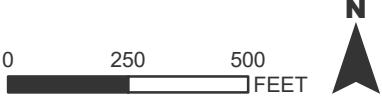


Legend			
Proposed Wells	Section Lines	Irrigation	Building Units
Production Facilities	Roads	Utility Poles	Buildings
Disturbance Area	Railroads	Manholes	Dry Ponds
500' Buffer	Fence Lines	Water Wells	Ditches
Property Lines	Utilities (Above Ground)	Pump House	Culverts
	Utilities (Below Ground)	Utility Cabinets	

Improvements & Cultural Features**:	
1. Property Lines: $\pm 100'$ NW, $\pm 300'$ W, $\pm 500'$ S, $\pm 650'$ E	12. Pump House: $\pm 210'$ SW
2. Road: $\pm 285'$ SW	13. Dry Ponds: $\pm 570'$ SW, $\pm 805'$ NW
3. Railroad: $\pm 745'$ NW	
4. Fence Lines: $\pm 60'$ S, $\pm 80'$ NW, $\pm 150'$ SE, $\pm 515'$ S	
5. Above Ground Utilities: $\pm 220'$ SW	
6. Below Ground Utilities: $\pm 95'$ S, $\pm 280'$ SW, $\pm 345'$ SW	
7. Irrigation: $\pm 50'$ NW	
8. Utility Poles: $\pm 315'$ SW, $\pm 445'$ SW, $\pm 640'$ SW, $\pm 935'$ SW	
9. Manhole: $\pm 155'$ NW, $\pm 305'$ SW	
10. Water Wells: $\pm 150'$ NW, $\pm 455'$ SW, $\pm 715'$ N	
11. Utility Cabinet: $\pm 145'$ NW	

Surface Use: The proposed project is located within agricultural lands (Adams County Zoning A-3). The location is primarily dominated by existing dryland agriculture pasture.

Surface Area: The approximate area of the proposed disturbance area is 20 acres



	FIELD DATE: 10/12/17	PARCEL ID: 0156900000278	
	DRAWING DATE: 12/14/17	SURFACE LOCATION: NW 1/4, SW 1/4, SEC 12, T 1S, R 66W ADAMS COUNTY, COLORADO	
	DRAWN BY: SKY		
	CHECKED BY: AMM		

**Publicly available data sources have not been independently verified by Manhard Consulting, Ltd.
**All distances measured from nearest well head or production facility