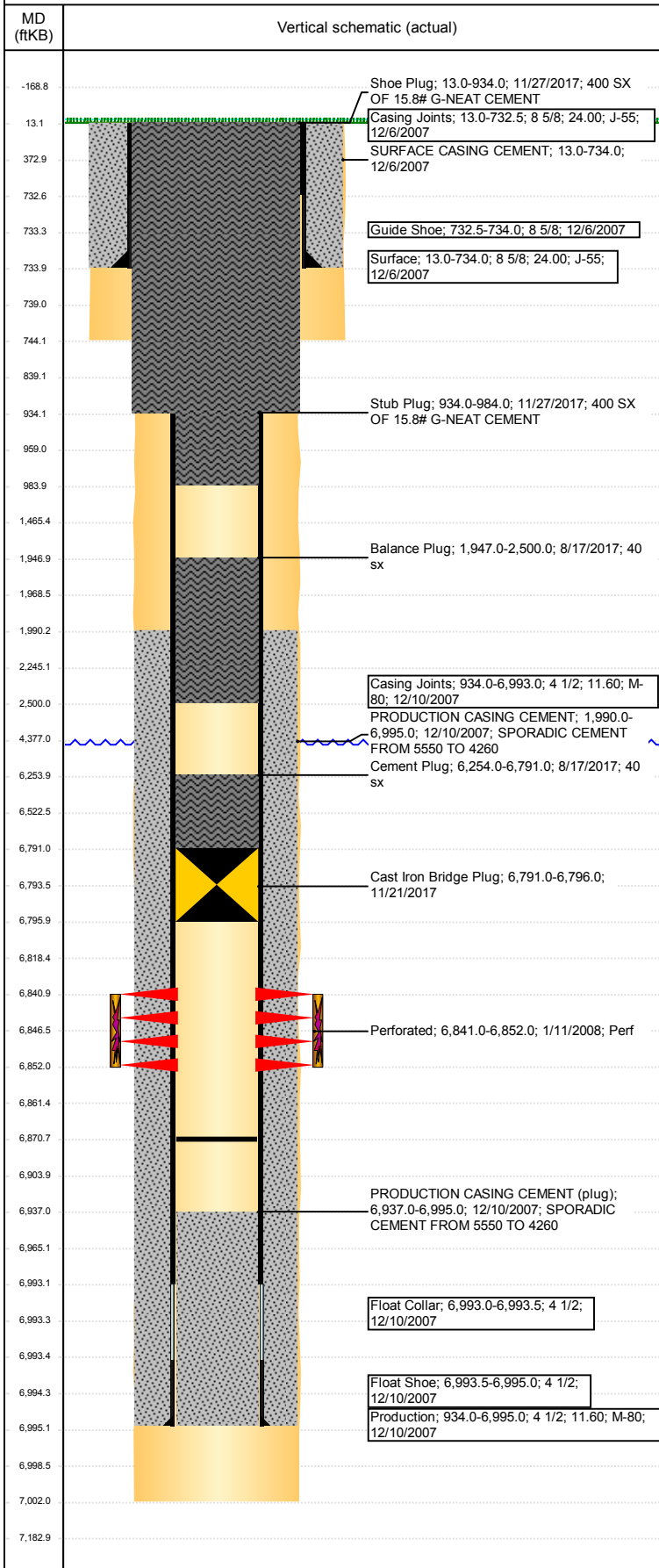


**Well Name: FOSS USX AA05-05**

VERTICAL - ORIGINAL HOLE, 12/29/2017 11:51:17 AM



## Well Header

API 05-123-26326	Business Unit DJ BASIN	District 15	Well Config VERTICAL
Original KB Elevation (ft) 4,721	KB - GL / MSL (ftKB) 13.00	Spud Date 12/5/2007	P & A Date 11/27/2017

## Comment

TAD AT SURFACE

## Directions To Well

WCRS 61 & 74, EAST - 1.0 MILE TO RD 63, SOUTH 0.4 MILE, SOUTHEAST 300' AND THEN NE 300' ONTO LOCATION.

## Congressional Location

Quarter 3 SW	Quarter 4 NW	Section 5	Township 6	Twonshp N/S Dir N	Range 63	Range E/W Dir W
-----------------	-----------------	--------------	---------------	----------------------	-------------	--------------------

## Bottom Hole Location

North-South Distance (ft)	From N or S Line	East-West Distance (ft)	From E or W Line
---------------------------	------------------	-------------------------	------------------

## Plug Back Total Depths

Date	Depth (ftKB)	Method	Com
1/10/2007	6,937.0	CASED HOLE LOG	DEPTH LOGGER ON CBL
12/10/2007	7,013.0	TAG	TAG
1/30/2012	6,865.0	TAG	TAG TO LAND TUBING
8/11/2014	6,870.7	TAG	TBG TALLY MEASUREMENT.

## Wellbore Sections

Section Des	Size (in)	Act Top, MD (ftKB)	Act Btm, MD (ftKB)
SURFACE	12 1/4	13	744
PRODUCTION	7 7/8	744	7,002

## Zone Statuses

Zone Name	Status Date	Status	Fluid Type	Job	Prod Method
CODELL	2/4/2008	PR		DRILLING/CO...	
CODELL	10/15/2010	PR	Water		Flowing
CODELL	11/27/2017	P&A	Water	ABANDON WE...	

## Casing Strings

### Surface, 734.0ftKB

Casing Description	Run Date	OD (in)	Wt/Len (l...)	Grade	Top, MD (ft...)	MD (ftKB)
Surface	12/6/2007	8 5/8	24.00	J-55	13.0	734.0

### Production, 6,995.0ftKB

Casing Description	Run Date	OD (in)	Wt/Len (l...)	Grade	Top, MD (ft...)	MD (ftKB)
Production	12/10/2007	4 1/2	11.60	M-80	13.0	6,995.0

## Cement

Description	Top Depth (ftKB)	Bottom Depth (ftKB)
SURFACE CASING CEMENT	13.0	734.0
PRODUCTION CASING CEMENT	1,990.0	6,995.0
Balance Plug	934.0	984.0
Cement Plug	6,254.0	6,791.0
Balance Plug	1,947.0	2,500.0
Balance Plug	13.0	934.0
Stub Plug	934.0	984.0
Shoe Plug	13.0	934.0

## Tubing Strings

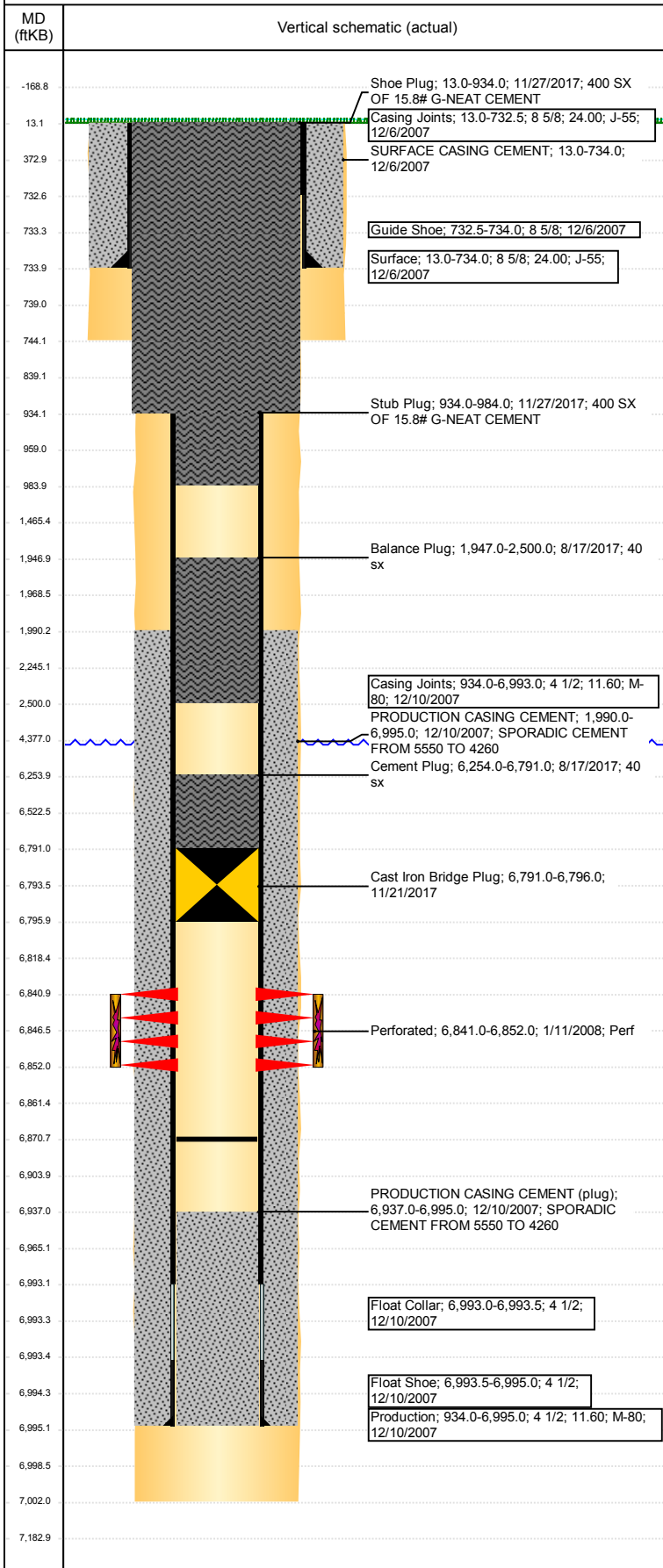
Tubing Description	Run Date	String...	ID (in)	Wt (lb/ft)	Grade	Len (ft)	Set De...
Tubing - Production	1/11/2008	2 3/8	2.00	4.70	J-55	6,811.00	

## Tubing Components

Item Des	OD (in)	Wt (lb/ft)	Grade	Jts	Len (ft)	Btm (ftKB)	Btm (TVD) (ftKB)
Tubing	2 3/8	4.70	J-55	222	6,809.60	6,822.6	
Pump Seating	2 3/8			1	1.10	6,823.7	
Nipple							
Notched collar	3 1/16			1	0.30	6,824.0	
Tubing Description	Run Date	String...	ID (in)	Wt (lb/ft)	Grade	Len (ft)	Set De...
Tubing - Production	8/12/2014	2 3/8	2.00	4.70	J-55	6,812.22	

**Well Name: FOSS USX AA05-05**

VERTICAL - ORIGINAL HOLE, 12/29/2017 11:51:18 AM



Tubing Components							
Item Des	OD (in)	Wt (lb/ft)	Grade	Jts	Len (ft)	Btm (ftKB)	Btm (TVD) (ftKB)
Pup Joint	2 3/8	4.70	L-80	1	10.08	23.1	
EUE 8rd Tubing	2 3/8	4.70	J-55	222	6,800.56	6,823.6	
Pump Seating	2 3/8	4.70	N-80	1	1.13	6,824.8	
Nipple							
Notched collar	2 3/8	4.70	J-55	1	0.45	6,825.2	

Other In Hole				
Run Date	Des	OD (in)	Top (ftKB)	Btm (ftKB)
11/21/2017	Cast Iron Bridge Plug	3.99	6,791.0	6,796.0

Logs			
Date	Type	Top, MD (ftKB)	Btm, MD (ftKB)
12/9/2007	COMPENSATED DENSITY	2,790.0	6,978.0
12/9/2007	INDUCTION	734.0	6,998.0
1/10/2008	CBL/CCL/GR	1,785.0	6,936.0
10/29/2013	GYRO	10.0	6,775.0

Perforation Data					
Linked Zone	Bnch/St g	Sum of Entered Shot Total	Top (ftKB)	Btm (ftKB)	Date
CODELL, ORIGINAL HOLE		44	6,841.00	6,852.00	1/11/2008
<b>Total (Sum)</b>		<b>44</b>			

Stimulation Intervals		
Start Date	Primary Job Type	
1/29/2008	DRILLING/COMPLETION - ORIGINAL	
Technical Result	Tech Result Details	Tech Result Note
Success	According to Plan	
Comment		