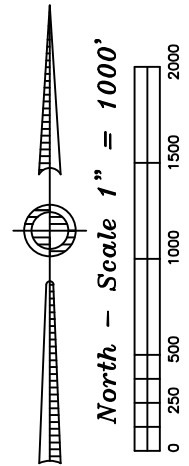
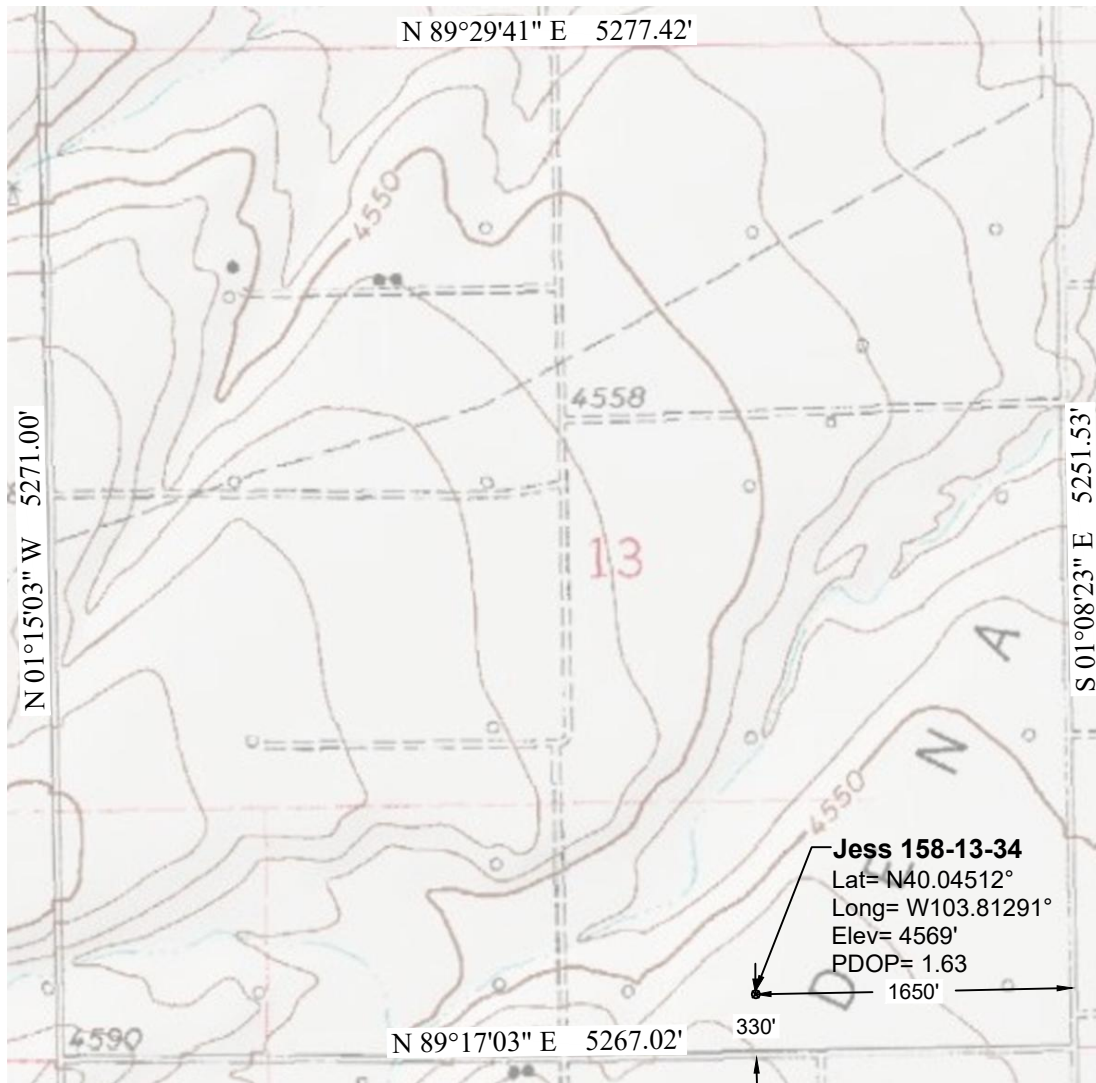


Topographic Exhibit



Notes:

- In accordance with a request from PCR Operating LLC, PLS Group has determined the location of the Jess 158-13-34 well to be 1650' FEL and 330' FSL as measured perpendicular to the section lines.
- Survey elevations based on NAVD 88 Datum using GPS observed heights and Geoid 12B corrections.
- Distances shown are in SPC grid feet. Ground scale factor= 1.000252455.
- There are no improvements within 100' of the proposed well site.
- Apparent Land Use is cropland.
- Vegetation is wheat.
- Topographic map contours and spot elevations based on NGVD 1929 Datum.
- Topographic map dated 1978.

P:\Project\2017\17134\dwg\17134_Topo.dwg November 29, 2017 - 3:47pm

Well Name: Jess 158-13-34	Field Date 11.16.2017	Prepared for: PCR Operating LLC	Project#: 17134.001
	Party Chief ADS		
Section 13-T1N-R58W-6th PM, SW-SE	Proj. Manager ZNB	PLS Group 6843 North Franklin Avenue Loveland, Colorado 80538 970.669.2100 office - 970.669.3652 fax	
Morgan County, Colorado	Drawing Date 11.29.2017		