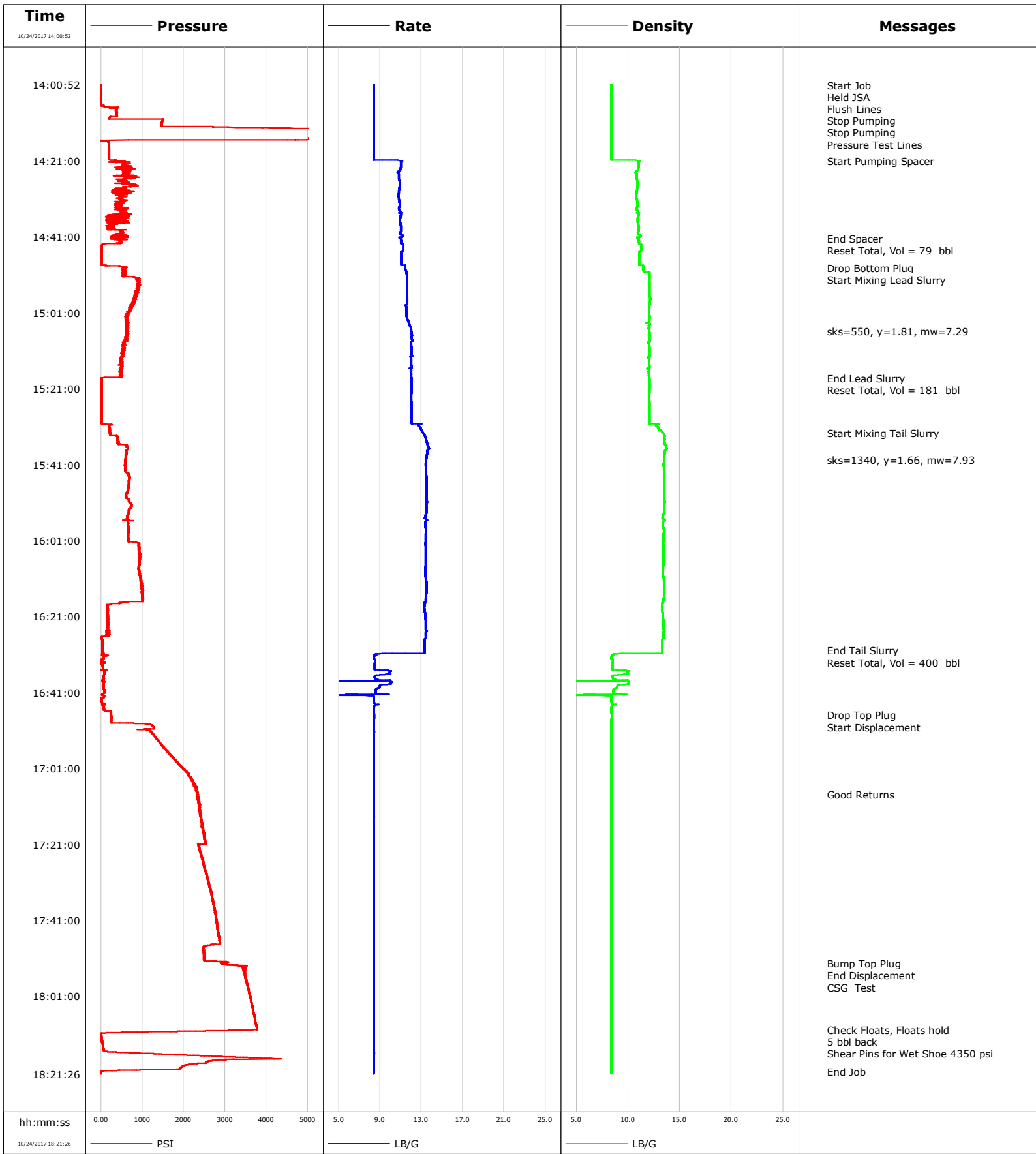


Well	Cannon 28N-9HZ	Client	Anadarko
Field	Wattenberg	SIR No.	D5VO-02196
Engineer	Ryan Call	Job Type	Production Monobore
Country	United States	Job Date	10-24-2017



				Customer			Job Number				
				Anadarko			D5VO-02196				
Well		Location (legal)			Schlumberger Location			Job Start			
Cannon 28N-9HZ D5VO-02196		P564			CWY			Oct/24/2017			
Field		Formation Name/Type			Deviation	Bit Size	Well MD		Well TVD		
Wattenberg					deg	7.9 in	18292.0 ft		6955.6 ft		
County		State/Province			BHP	BHST	BHCT	Pore Press. Gradient			
0631719992		Colorado			psi	220 degF	221 degF	lb/gal			
Well Master	API/UWI	Rig Name	Drilled For	Service Via	Casing/Liner						
0631719992		P564	Gas	Land	Depth, ft	Size, in	Weight, lb/ft	Grade	Thread		
					1887.0	9.6	36.0	J55			
					18292.0	5.5	22.0	HCP110			
Offshore Zone		Well Class	Well Type		Tubing/Drill Pipe						
		New	Development		T/D	Depth, ft	Size, in	Weight, lb/ft	Grade	Thread	
Drilling Fluid Type		Max. Density	Plastic Viscosity								
OBM		9.70 lb/gal	cP								
Service Line		Job Type			Perforations/Open Hole						
Cementing		Production Monobore			Top, ft	Bottom, ft	shot/ft	No. of Shots	Total Interval		
					ft	ft			ft		
					ft	ft			Diameter		
					ft	ft			in		
		psi	psi	5.5"	Treat Down	Displacement	Packer Type	Packer Depth			
						405.9 bbl		ft			
					Tubing Vol.	Casing Vol.	Annular Vol.	Openhole Vol.			
					bbl	bbl	bbl	bbl			
Casing/Tubing Secured		1 Hole Vol. Circulated prior to Cement	Casing Tools							Squeeze Job	
<input type="checkbox"/>		<input type="checkbox"/>									
Lift Pressure		Shoe Type			Shoe Depth			Squeeze Type			
psi		Float			18292.0 ft						
Pipe Rotated		Pipe Reciprocated	Stage Tool Type			Tool Depth					
<input type="checkbox"/>		<input type="checkbox"/>				ft					
No. Centralizers		Top Plugs	Bottom Plugs	Stage Tool Depth			Tail Pipe Size				
		1	1	ft			in				
Cement Head Type		Job Scheduled For			Arrived on Location			Leave Location			
Double		Oct/24/2017 10:00			Oct/24/2017 10:00			Oct/24/2017 19:30			
		Collar Type			Collar Depth			Tail Pipe Depth			
		Float			18283.0 ft			ft			
		Sqz. Total Vol.									
		bbl									
Date	Time 24-hr clock	Treating Pressure PSI	Flow Rate B/M	Density LB/G	Volume BBL	Message					
10/24/2017	14:00:52	7	0.0	8.38	0.0	Started Acquisition					
10/24/2017	14:01:04	7	0.0	8.38	0.0	Start Job					
10/24/2017	14:01:06	7	0.0	8.38	0.0	Held JSA					
10/24/2017	14:02:52	7	0.0	8.38	0.0						
10/24/2017	14:03:39	7	0.0	8.38	0.0	Stop Pumping					
10/24/2017	14:04:52	7	0.0	8.38	0.0						
10/24/2017	14:06:52	175	1.2	8.38	0.0						
10/24/2017	14:08:52	375	2.2	8.38	3.9						
10/24/2017	14:09:31	215	0.0	8.38	5.1	Pressure Test Lines					
10/24/2017	14:10:52	1471	0.0	8.38	5.1						
10/24/2017	14:12:52	5069	0.0	8.38	5.1						
10/24/2017	14:14:52	5036	0.0	8.38	5.1						
10/24/2017	14:16:52	188	0.0	8.38	5.1						
10/24/2017	14:18:52	193	0.0	8.38	5.1						
10/24/2017	14:20:52	325	2.0	10.73	5.2						
10/24/2017	14:21:03	359	2.3	11.02	5.6	Start Pumping Spacer					
10/24/2017	14:22:52	549	2.9	10.99	12.1						
10/24/2017	14:24:52	532	3.9	10.83	19.6						
10/24/2017	14:26:52	520	4.0	10.93	28.1						
10/24/2017	14:28:52	437	3.0	10.83	36.7						
10/24/2017	14:30:52	498	3.9	10.80	44.1						

Well		Field		Job Start		Customer		Job Number	
Cannon 28N-9HZ D5VO-02196		Wattenberg		Oct/24/2017		Anadarko		D5VO-02196	
Date	Time 24-hr clock	Treating Pressure PSI	Flow Rate B/M	Density LB/G	Volume BBL	Message			
10/24/2017	14:34:52	493	4.0	10.99	59.5				
10/24/2017	14:36:52	269	1.2	10.89	63.9				
10/24/2017	14:38:52	263	1.8	11.00	67.9				
10/24/2017	14:40:52	356	3.9	11.19	75.7				
10/24/2017	14:41:27	540	3.7	10.92	78.0	End Spacer			
10/24/2017	14:41:30	293	3.7	11.01	78.2	Reset Total, Vol = 79 bbl			
10/24/2017	14:42:52	102	0.8	11.03	83.9				
10/24/2017	14:44:52	17	0.0	11.04	83.9				
10/24/2017	14:46:52	17	0.0	11.03	83.9				
10/24/2017	14:48:52	593	4.5	11.42	85.4				
10/24/2017	14:49:09	604	4.5	11.42	86.6	Drop Bottom Plug			
10/24/2017	14:50:47	587	4.5	12.06	93.9	Start Mixing Lead Slurry			
10/24/2017	14:50:52	598	4.5	12.06	94.3				
10/24/2017	14:52:52	888	6.3	12.08	105.5				
10/24/2017	14:54:52	873	6.3	12.08	118.1				
10/24/2017	14:56:52	854	6.3	12.10	130.7				
10/24/2017	14:58:52	726	6.3	12.01	143.3				
10/24/2017	15:00:52	652	6.3	12.02	156.0				
10/24/2017	15:02:52	603	6.3	12.06	168.6				
10/24/2017	15:04:52	613	6.3	12.04	181.2				
10/24/2017	15:05:46	656	6.3	12.02	186.9	sks=550, y=1.81, mw=7.29			
10/24/2017	15:06:52	599	6.3	12.08	193.8				
10/24/2017	15:08:52	555	6.3	11.96	206.4				
10/24/2017	15:10:52	544	6.3	12.06	219.0				
10/24/2017	15:12:52	480	6.3	11.96	231.6				
10/24/2017	15:14:52	487	6.3	12.04	244.3				
10/24/2017	15:16:52	505	6.3	11.99	256.9				
10/24/2017	15:18:10	14	1.1	12.04	265.0	End Lead Slurry			
10/24/2017	15:18:14	17	0.1	12.07	265.0	Reset Total, Vol = 181 bbl			
10/24/2017	15:18:52	15	0.0	12.06	265.0				
10/24/2017	15:20:52	15	0.0	12.06	265.0				
10/24/2017	15:22:52	15	0.0	12.03	265.0				
10/24/2017	15:24:52	16	0.0	12.04	265.0				
10/24/2017	15:26:52	15	0.0	12.05	265.1				
10/24/2017	15:28:52	15	0.0	12.06	265.1				
10/24/2017	15:30:52	200	4.5	12.72	267.1				
10/24/2017	15:32:37	219	4.5	13.33	275.1	Start Mixing Tail Slurry			
10/24/2017	15:32:52	213	4.5	13.42	276.2				
10/24/2017	15:34:52	399	6.3	13.48	287.9				
10/24/2017	15:36:52	660	8.2	13.72	302.6				
10/24/2017	15:38:52	609	8.3	13.49	319.1				
10/24/2017	15:39:42	588	8.3	13.45	326.0	sks=1340, y=1.66, mw=7.93			
10/24/2017	15:40:52	580	8.2	13.42	335.6				
10/24/2017	15:42:52	585	8.2	13.46	352.1				
10/24/2017	15:44:52	682	8.2	13.48	368.6				
10/24/2017	15:46:52	678	8.2	13.48	385.1				
10/24/2017	15:48:52	595	8.3	13.50	401.6				
10/24/2017	15:50:52	689	8.2	13.52	418.1				
10/24/2017	15:52:52	685	8.2	13.51	434.5				
10/24/2017	15:54:52	633	8.3	13.34	451.0				
10/24/2017	15:56:52	653	8.2	13.36	467.5				
10/24/2017	15:58:52	672	8.2	13.44	483.9				
10/24/2017	16:00:52	667	8.2	13.38	500.4				
10/24/2017	16:02:52	924	8.2	13.39	516.9				

Well Cannon 28N-9HZ D5VO-02196			Field Wattenberg		Job Start Oct/24/2017	Customer Anadarko		Job Number D5VO-02196
Date	Time 24-hr clock	Treating Pressure PSI	Flow Rate B/M	Density LB/G	Volume BBL	Message		
10/24/2017	16:06:52	940	8.2	13.40	549.8			
10/24/2017	16:08:52	920	8.2	13.36	566.2			
10/24/2017	16:10:52	942	8.2	13.42	582.6			
10/24/2017	16:12:52	992	8.2	13.49	599.1			
10/24/2017	16:14:52	1010	8.2	13.48	615.5			
10/24/2017	16:16:52	1004	8.2	13.39	631.9			
10/24/2017	16:18:52	174	3.3	13.27	641.8			
10/24/2017	16:20:52	152	3.3	13.35	648.4			
10/24/2017	16:22:52	148	3.3	13.38	655.0			
10/24/2017	16:24:52	133	3.2	13.52	661.6			
10/24/2017	16:26:52	20	0.0	13.38	666.2			
10/24/2017	16:28:52	29	0.0	13.30	666.2			
10/24/2017	16:30:00	29	0.0	13.29	666.2	End Tail Slurry		
10/24/2017	16:30:52	61	0.4	8.64	666.3			
10/24/2017	16:31:00	61	0.4	8.52	666.3	Reset Total, Vol = 400 bbl		
10/24/2017	16:32:52	32	0.1	8.51	668.8			
10/24/2017	16:34:52	39	0.0	8.45	668.9			
10/24/2017	16:36:52	67	2.7	8.45	673.7			
10/24/2017	16:38:52	69	2.3	9.60	679.2			
10/24/2017	16:40:52	76	2.7	8.58	684.1			
10/24/2017	16:42:52	14	0.0	8.39	688.7			
10/24/2017	16:44:52	71	3.8	8.40	692.0			
10/24/2017	16:46:52	247	8.3	8.41	704.0			
10/24/2017	16:47:01	249	8.3	8.41	705.2	Drop Top Plug		
10/24/2017	16:47:03	253	8.2	8.41	705.5	Start Displacement		
10/24/2017	16:48:52	255	8.2	8.38	720.5			
10/24/2017	16:50:52	1089	7.5	8.39	736.5			
10/24/2017	16:52:52	1328	7.7	8.39	751.7			
10/24/2017	16:54:52	1485	7.6	8.39	766.8			
10/24/2017	16:56:52	1628	7.6	8.38	782.0			
10/24/2017	16:58:52	1788	7.5	8.39	797.1			
10/24/2017	17:00:52	1966	7.6	8.39	812.2			
10/24/2017	17:02:52	2124	7.4	8.39	827.3			
10/24/2017	17:04:52	2247	7.0	8.38	841.9			
10/24/2017	17:06:52	2296	6.9	8.39	855.8			
10/24/2017	17:07:56	2351	6.8	8.38	863.1	Good Returns		
10/24/2017	17:08:52	2367	6.7	8.38	869.4			
10/24/2017	17:10:52	2373	6.5	8.38	882.8			
10/24/2017	17:12:52	2403	6.5	8.39	895.9			
10/24/2017	17:14:52	2435	6.4	8.39	908.8			
10/24/2017	17:16:52	2462	6.3	8.38	921.6			
10/24/2017	17:18:52	2485	6.1	8.38	934.1			
10/24/2017	17:20:52	2536	6.1	8.38	946.3			
10/24/2017	17:22:52	2394	5.2	8.38	956.9			
10/24/2017	17:24:52	2449	5.2	8.38	967.4			
10/24/2017	17:26:52	2500	5.2	8.38	977.9			
10/24/2017	17:28:52	2550	5.2	8.38	988.3			
10/24/2017	17:30:52	2606	5.2	8.38	998.8			
10/24/2017	17:32:52	2641	5.2	8.39	1009.2			
10/24/2017	17:34:52	2689	5.2	8.38	1019.7			
10/24/2017	17:36:52	2718	5.2	8.38	1030.1			
10/24/2017	17:38:52	2759	5.3	8.38	1040.6			
10/24/2017	17:40:52	2786	5.2	8.38	1051.0			
10/24/2017	17:42:52	2810	5.2	8.38	1061.5			

Well		Field		Job Start		Customer		Job Number	
Cannon 28N-9HZ D5VO-02196		Wattenberg		Oct/24/2017		Anadarko		D5VO-02196	
Date	Time 24-hr clock	Treating Pressure PSI	Flow Rate B/M	Density LB/G	Volume BBL	Message			
10/24/2017	17:46:52	2880	5.3	8.38	1082.4				
10/24/2017	17:48:52	2494	3.2	8.38	1089.9				
10/24/2017	17:52:23	2945	0.0	8.38	1099.7	Bump Top Plug			
10/24/2017	17:52:24	2917	0.0	8.38	1099.7	End Displacement			
10/24/2017	17:52:52	3409	2.1	8.38	1100.0				
10/24/2017	17:53:06	3420	0.1	8.38	1100.3	CSG Test			
10/24/2017	17:54:52	3461	0.0	8.38	1100.3				
10/24/2017	17:56:52	3507	0.0	8.38	1100.3				
10/24/2017	17:58:52	3555	0.0	8.38	1100.3				
10/24/2017	18:00:52	3598	0.0	8.39	1100.4				
10/24/2017	18:02:52	3640	0.0	8.39	1100.4				
10/24/2017	18:04:52	3679	0.0	8.39	1100.4				
10/24/2017	18:06:52	3715	0.0	8.39	1100.4				
10/24/2017	18:08:52	3754	0.0	8.38	1100.4				
10/24/2017	18:09:51	3653	0.0	8.39	1100.4	Check Floats, Floats hold			
10/24/2017	18:10:52	3	0.0	8.39	1100.4				
10/24/2017	18:10:55	3	0.0	8.39	1100.4	5 bbl back			
10/24/2017	18:12:52	28	0.0	8.38	1100.4				
10/24/2017	18:14:49	64	0.0	8.38	1100.4	Shear Pins for Wet Shoe 4350 psi			
10/24/2017	18:14:52	63	0.0	8.38	1100.4				
10/24/2017	18:16:52	2927	3.0	8.38	1104.0				
10/24/2017	18:18:52	2183	0.0	8.38	1109.4				
10/24/2017	18:20:50	4	0.0	8.38	1109.4	End Job			

Post Job Summary

Average Pump Rates, bbl/min				Volume of Fluid Injected, bbl			
Slurry	N2	Mud	Maximum Rate	Total Slurry	Mud	Spacer	N2
4.9			8.7	581.0	0.0	78.0	
Treating Pressure Summary, psi				Breakdown Fluid			
Maximum	Final	Average	Bump Plug to	Breakdown	Type	Volume	Density
5081	8	1198				bbl	lb/gal
Avg. N2 Percent	Designed Slurry Volume	Displacement	Mix Water Temp	Cement Circulated to Surface?	<input type="checkbox"/>	Volume	bbl
%	0.0 bbl	410.0 bbl	60 degF	Washed Thru Perfs	<input type="checkbox"/>	To	ft
Customer or Authorized Representative	Schlumberger Supervisor			Circulation Lost	<input type="checkbox"/>	Job Completed	<input checked="" type="checkbox"/>
Anadarko	Ryan Call			-		-	