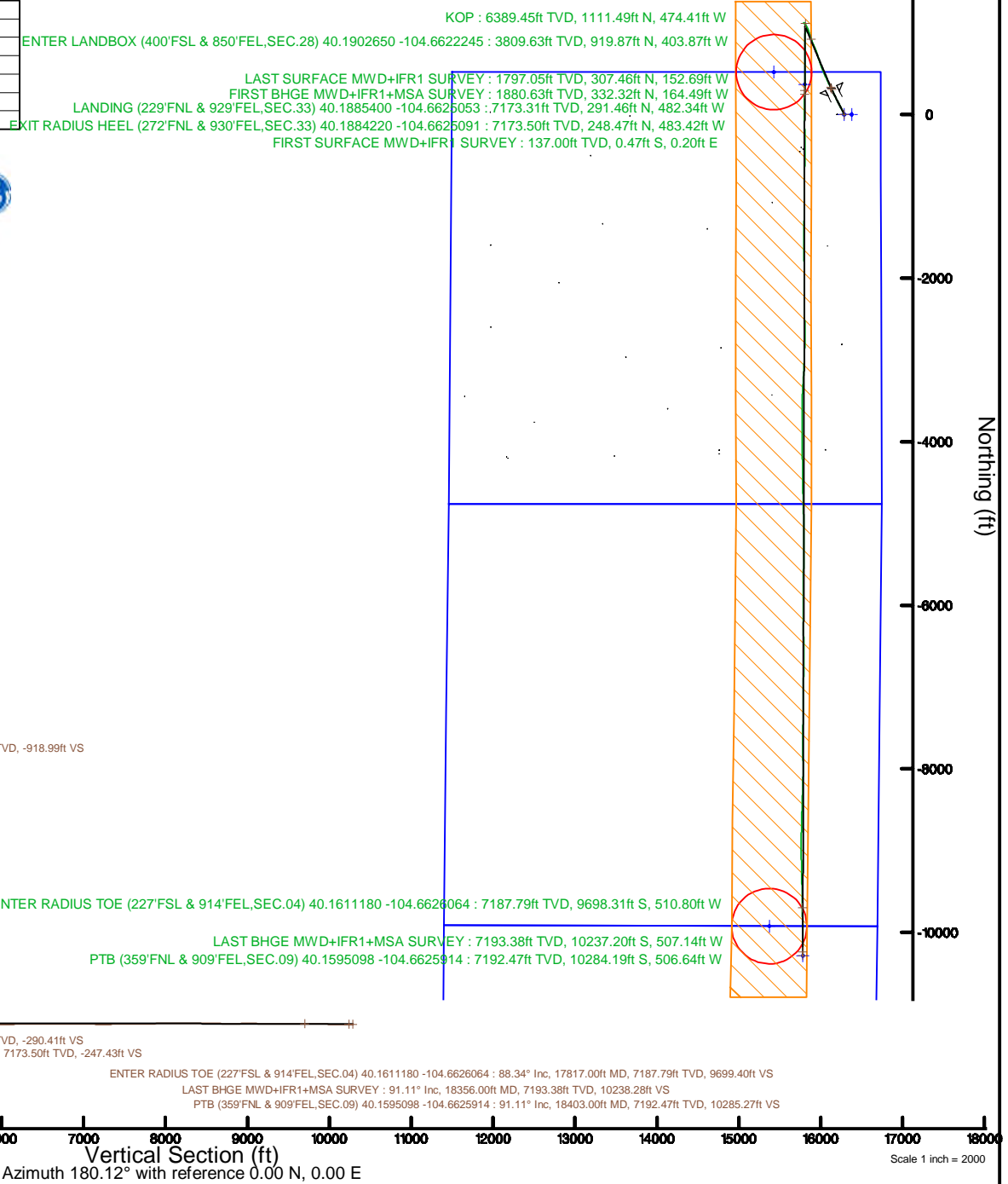
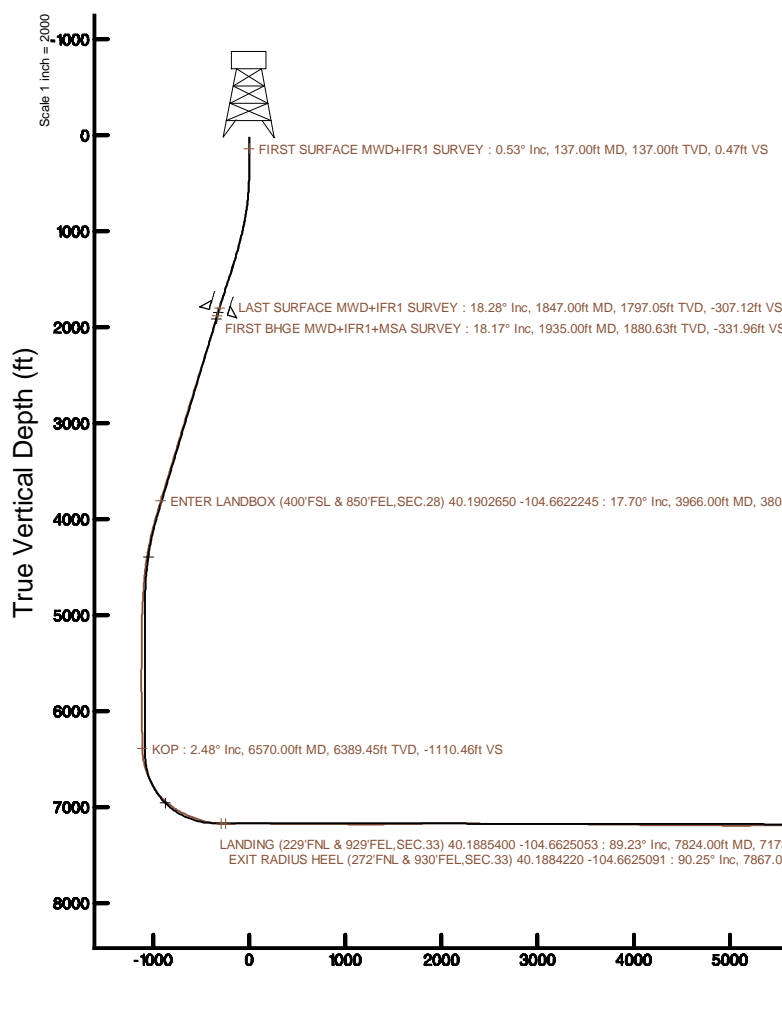
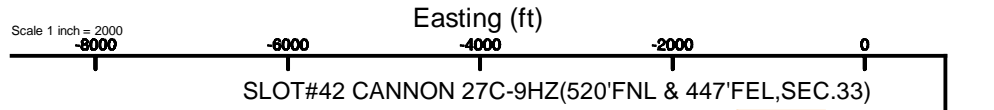


KERR-MCGEE OIL & GAS ONSHORE LP (WA)

Location: COLORADO Slot: SLOT#42 CANNON 27C-9HZ(520'FNL & 447'FEL,SEC.33)
 Field: WELD COUNTY (UTM/TRUE NORTH) Well: CANNON 27C-9HZ
 Facility: SEC.33-T3N-R65W Wellbore: CANNON 27C-9HZ PWB

Plot reference wellpath is CANNON 27C-9HZ PWP Rev-A.0	Grid System: NAD83 / UTM Zone 13 North, US feet
True vertical depths are referenced to PD 564 (26) (RT)	* = Wellpath was transformed from a different geodetic datum
Measured depths are referenced to PD 564 (26) (RT)	North Reference: True north
PD 564 (26) (RT) to Mean Sea Level: 4862 feet	Scale: True distance
Mean Sea Level to Mud line (At Slot: SLOT#42 CANNON 27C-9HZ(520'FNL & 447'FEL,SEC.33)): 0 feet	Depths are in feet
Coordinates are in feet referenced to Slot	Created by: painsetr on 2017-10-11
	Database: WA_DEN_Anadarko_Defn



REFERENCE WELLPATH IDENTIFICATION			
Operator	KERR-MCGEE OIL & GAS ONSHORE LP (WA)	Slot	SLOT#42 CANNON 27C-9HZ(520'FNL & 447'FEL,SEC.33)
Area	COLORADO	Well	CANNON 27C-9HZ
Field	WELD COUNTY (UTM/TRUE NORTH)	Wellbore	CANNON 27C-9HZ AWB
Facility	SEC.33-T3N-R65W		

REPORT SETUP INFORMATION			
Projection System	NAD83 / UTM Zone 13 North, US feet	Software System	WellArchitect® 5.0
North Reference	True	User	Painsetr
Scale	0.999610	Report Generated	10/11/2017 at 12:39 PM
Convergence at slot	0.22° East	Database/Source file	WA_DEN_Anadarko_Defn/CANNON_27C-9HZ_AWP.xml

WELLPATH LOCATION						
	Local coordinates		Grid coordinates		Geographic coordinates	
	North[ft]	East[ft]	Easting[US ft]	Northing[US ft]	Latitude	Longitude
Slot Location	1439.04	1654.33	1735155.27	14595279.28	40°11'15.864"N	104°39'38.804"W
Facility Reference Pt			1733507.01	14593834.61	40°11'01.644"N	104°40'00.120"W
Field Reference Pt			1698235.31	14552047.82	40°04'09.600"N	104°47'36.000"W

WELLPATH DATUM			
Calculation method	Minimum curvature	PD 564 (26') (RT) to Facility Vertical Datum	4862.00ft
Horizontal Reference Pt	Slot	PD 564 (26') (RT) to Mean Sea Level	4862.00ft
Vertical Reference Pt	PD 564 (26') (RT)	PD 564 (26') (RT) to Mud Line at Slot (SLOT#42 CANNON 27C-9HZ(520'FNL & 447'FEL,SEC.33))	4862.00ft
MD Reference Pt	PD 564 (26') (RT)	Section Origin	N 0.00, E 0.00 ft
Field Vertical Reference	Mean Sea Level	Section Azimuth	180.12°

REFERENCE WELLPATH IDENTIFICATION			
Operator	KERR-MCGEE OIL & GAS ONSHORE LP (WA)	Slot	SLOT#42 CANNON 27C-9HZ(520'FNL & 447'FEL,SEC.33)
Area	COLORADO	Well	CANNON 27C-9HZ
Field	WELD COUNTY (UTM/TRUE NORTH)	Wellbore	CANNON 27C-9HZ AWB
Facility	SEC.33-T3N-R65W		

WELLPATH DATA (242 stations) † = interpolated/extrapolated station												
MD (ft)	Inclination (°)	Azimuth (°)	TVD (ft)	Vert Sect (ft)	North (ft)	East (ft)	Grid East [US ft]	Grid North [US ft]	Latitude	Longitude	DLS (°/100ft)	Comments
0.00†	0.000	157.560	0.00	0.00	0.00	0.00	1735155.27	14595279.28	40°11'15.864"N	104°39'38.804"W	0.00	
26.00	0.000	157.560	26.00	0.00	0.00	0.00	1735155.27	14595279.28	40°11'15.864"N	104°39'38.804"W	0.00	
137.00	0.530	157.560	137.00	0.47	-0.47	0.20	1735155.47	14595278.81	40°11'15.859"N	104°39'38.801"W	0.48	FIRST SURFACE MWD+IFR1 SURVEY
169.00	0.530	151.130	169.00	0.74	-0.74	0.32	1735155.60	14595278.54	40°11'15.857"N	104°39'38.800"W	0.19	
200.00	0.440	176.880	200.00	0.98	-0.99	0.40	1735155.68	14595278.30	40°11'15.854"N	104°39'38.799"W	0.75	
232.00	0.520	160.360	231.99	1.24	-1.24	0.46	1735155.73	14595278.04	40°11'15.852"N	104°39'38.798"W	0.50	
264.00	0.260	145.850	263.99	1.44	-1.44	0.54	1735155.82	14595277.84	40°11'15.850"N	104°39'38.797"W	0.86	
296.00	0.530	278.130	295.99	1.48	-1.48	0.44	1735155.72	14595277.80	40°11'15.849"N	104°39'38.798"W	2.28	
327.00	0.400	303.350	326.99	1.40	-1.40	0.21	1735155.49	14595277.88	40°11'15.850"N	104°39'38.801"W	0.77	
359.00	0.920	306.080	358.99	1.19	-1.19	-0.09	1735155.18	14595278.09	40°11'15.852"N	104°39'38.805"W	1.63	
391.00	0.970	311.000	390.99	0.86	-0.86	-0.51	1735154.77	14595278.42	40°11'15.856"N	104°39'38.811"W	0.30	
422.00	1.630	325.420	421.98	0.33	-0.32	-0.95	1735154.32	14595278.95	40°11'15.861"N	104°39'38.816"W	2.36	
454.00	2.020	329.370	453.96	-0.53	0.54	-1.50	1735153.77	14595279.81	40°11'15.869"N	104°39'38.823"W	1.28	
486.00	2.460	335.520	485.94	-1.64	1.65	-2.07	1735153.20	14595280.92	40°11'15.880"N	104°39'38.831"W	1.56	
518.00	2.860	339.570	517.90	-3.01	3.02	-2.64	1735152.63	14595282.29	40°11'15.894"N	104°39'38.838"W	1.38	
580.00	4.480	338.510	579.77	-6.71	6.72	-4.06	1735151.19	14595285.98	40°11'15.930"N	104°39'38.856"W	2.62	
612.00	5.100	338.250	611.66	-9.20	9.21	-5.05	1735150.19	14595288.46	40°11'15.955"N	104°39'38.869"W	1.94	
644.00	5.760	337.810	643.52	-12.00	12.01	-6.18	1735149.05	14595291.27	40°11'15.983"N	104°39'38.884"W	2.07	
707.00	7.380	334.730	706.10	-18.58	18.60	-9.10	1735146.10	14595297.84	40°11'16.048"N	104°39'38.921"W	2.63	
771.00	8.790	334.290	769.46	-26.70	26.72	-12.98	1735142.20	14595305.94	40°11'16.128"N	104°39'38.971"W	2.21	
802.00	9.580	335.870	800.07	-31.18	31.21	-15.06	1735140.10	14595310.42	40°11'16.172"N	104°39'38.998"W	2.67	
834.00	10.500	335.790	831.58	-36.26	36.30	-17.35	1735137.80	14595315.50	40°11'16.223"N	104°39'39.027"W	2.88	
866.00	11.290	334.560	863.00	-41.75	41.79	-19.89	1735135.24	14595320.98	40°11'16.277"N	104°39'39.060"W	2.57	
897.00	12.220	334.640	893.35	-47.45	47.50	-22.60	1735132.51	14595326.67	40°11'16.333"N	104°39'39.095"W	3.00	
929.00	13.050	334.560	924.57	-53.76	53.82	-25.60	1735129.48	14595332.98	40°11'16.396"N	104°39'39.134"W	2.59	
960.00	13.970	333.760	954.72	-60.27	60.34	-28.76	1735126.30	14595339.48	40°11'16.460"N	104°39'39.175"W	3.03	
992.00	13.890	332.270	985.77	-67.13	67.20	-32.25	1735122.78	14595346.33	40°11'16.528"N	104°39'39.220"W	1.15	
1024.00	15.070	332.360	1016.76	-74.21	74.28	-35.97	1735119.04	14595353.40	40°11'16.598"N	104°39'39.267"W	3.69	
1055.00	15.340	331.740	1046.67	-81.38	81.47	-39.78	1735115.20	14595360.56	40°11'16.669"N	104°39'39.317"W	1.02	
1087.00	16.260	330.600	1077.46	-89.00	89.10	-43.98	1735110.97	14595368.18	40°11'16.744"N	104°39'39.371"W	3.03	
1118.00	16.080	330.340	1107.24	-96.51	96.61	-48.24	1735106.69	14595375.67	40°11'16.819"N	104°39'39.426"W	0.63	
1150.00	16.440	332.620	1137.96	-104.37	104.48	-52.51	1735102.38	14595383.52	40°11'16.896"N	104°39'39.481"W	2.29	
1182.00	16.610	332.890	1168.64	-112.45	112.57	-56.68	1735098.19	14595391.59	40°11'16.976"N	104°39'39.534"W	0.58	
1213.00	17.450	333.850	1198.28	-120.56	120.69	-60.75	1735094.09	14595399.69	40°11'17.057"N	104°39'39.587"W	2.86	
1245.00	17.890	333.500	1228.77	-129.25	129.40	-65.05	1735089.75	14595408.38	40°11'17.143"N	104°39'39.642"W	1.41	
1277.00	17.670	332.450	1259.24	-137.95	138.10	-69.49	1735085.28	14595417.06	40°11'17.229"N	104°39'39.699"W	1.22	
1309.00	18.410	332.710	1289.66	-146.74	146.90	-74.06	1735080.69	14595425.84	40°11'17.316"N	104°39'39.758"W	2.33	
1340.00	18.900	332.530	1319.04	-155.53	155.70	-78.62	1735076.09	14595434.62	40°11'17.403"N	104°39'39.817"W	1.59	
1372.00	18.720	332.010	1349.33	-164.65	164.83	-83.42	1735071.26	14595443.73	40°11'17.493"N	104°39'39.879"W	0.77	
1403.00	19.560	332.710	1378.61	-173.65	173.84	-88.13	1735066.51	14595452.71	40°11'17.582"N	104°39'39.940"W	2.81	
1435.00	19.340	334.290	1408.79	-183.17	183.37	-92.89	1735061.72	14595462.23	40°11'17.676"N	104°39'40.001"W	1.78	
1467.00	19.200	333.940	1438.99	-192.66	192.88	-97.50	1735057.08	14595471.71	40°11'17.770"N	104°39'40.060"W	0.57	
1498.00	19.510	333.500	1468.24	-201.87	202.09	-102.05	1735052.50	14595480.90	40°11'17.861"N	104°39'40.119"W	1.11	
1530.00	20.210	334.560	1498.34	-211.63	211.86	-106.81	1735047.70	14595490.65	40°11'17.958"N	104°39'40.180"W	2.46	
1562.00	20.170	334.730	1528.37	-221.60	221.84	-111.53	1735042.94	14595500.61	40°11'18.056"N	104°39'40.241"W	0.22	

REFERENCE WELLPATH IDENTIFICATION			
Operator	KERR-MCGEE OIL & GAS ONSHORE LP (WA)	Slot	SLOT#42 CANNON 27C-9HZ(520'FNL & 447'FEL,SEC.33)
Area	COLORADO	Well	CANNON 27C-9HZ
Field	WELD COUNTY (UTM/TRUE NORTH)	Wellbore	CANNON 27C-9HZ AWB
Facility	SEC.33-T3N-R65W		

WELLPATH DATA (242 stations) † = interpolated/extrapolated station												
MD (ft)	Inclination (°)	Azimuth (°)	TVD (ft)	Vert Sect (ft)	North (ft)	East (ft)	Grid East (US ft)	Grid North (US ft)	Latitude	Longitude	DLS (°/100ft)	Comments
1594.00	20.570	333.940	1558.37	-231.63	231.88	-116.36	1735038.08	14595510.62	40°11'18.155"N	104°39'40.303"W	1.52	
1625.00	20.870	333.500	1587.37	-241.45	241.71	-121.22	1735033.18	14595520.44	40°11'18.253"N	104°39'40.366"W	1.09	
1656.00	19.690	335.520	1616.44	-251.14	251.41	-125.84	1735028.52	14595530.11	40°11'18.348"N	104°39'40.426"W	4.43	
1688.00	19.340	335.870	1646.61	-260.87	261.15	-130.24	1735024.08	14595539.83	40°11'18.445"N	104°39'40.482"W	1.15	
1719.00	18.940	333.940	1675.89	-270.06	270.36	-134.55	1735019.74	14595549.02	40°11'18.536"N	104°39'40.538"W	2.41	
1751.00	19.070	333.240	1706.15	-279.39	279.69	-139.19	1735015.07	14595558.33	40°11'18.628"N	104°39'40.597"W	0.82	
1815.00	18.720	334.120	1766.70	-297.94	298.26	-148.38	1735005.82	14595576.86	40°11'18.811"N	104°39'40.716"W	0.71	
1847.00	18.280	335.610	1797.05	-307.12	307.46	-152.69	1735001.47	14595586.03	40°11'18.902"N	104°39'40.771"W	2.02	LAST SURFACE MWD+IFR1 SURVEY
1935.00	18.170	333.610	1880.63	-331.96	332.32	-164.49	1734989.58	14595610.84	40°11'19.148"N	104°39'40.923"W	0.72	FIRST BHGE MWD+IFR1+MSA SURVEY
2024.00	17.930	331.870	1965.25	-356.44	356.83	-177.12	1734976.87	14595635.29	40°11'19.390"N	104°39'41.086"W	0.66	
2113.00	18.860	333.340	2049.70	-381.35	381.77	-190.03	1734963.86	14595660.17	40°11'19.637"N	104°39'41.253"W	1.17	
2203.00	18.750	335.840	2134.90	-407.53	407.96	-202.48	1734951.32	14595686.31	40°11'19.895"N	104°39'41.413"W	0.90	
2292.00	19.610	336.000	2218.96	-434.19	434.66	-214.41	1734939.29	14595712.95	40°11'20.159"N	104°39'41.567"W	0.97	
2381.00	19.150	333.590	2302.92	-460.89	461.38	-226.98	1734926.63	14595739.61	40°11'20.423"N	104°39'41.729"W	1.04	
2470.00	18.660	337.630	2387.12	-487.10	487.62	-238.89	1734914.62	14595765.79	40°11'20.683"N	104°39'41.882"W	1.57	
2559.00	19.240	337.650	2471.30	-513.81	514.35	-249.88	1734903.53	14595792.47	40°11'20.947"N	104°39'42.024"W	0.65	
2649.00	18.320	336.100	2556.51	-540.43	541.00	-261.25	1734892.06	14595819.06	40°11'21.210"N	104°39'42.170"W	1.16	
2738.00	18.300	339.110	2641.00	-566.25	566.84	-271.90	1734881.32	14595844.86	40°11'21.465"N	104°39'42.308"W	1.06	
2828.00	18.530	340.950	2726.39	-592.95	593.56	-281.61	1734871.51	14595871.53	40°11'21.730"N	104°39'42.433"W	0.69	
2917.00	18.130	340.960	2810.88	-619.38	620.02	-290.74	1734862.28	14595897.94	40°11'21.991"N	104°39'42.550"W	0.45	
3007.00	17.610	340.510	2896.54	-645.44	646.09	-299.85	1734853.08	14595923.96	40°11'22.249"N	104°39'42.668"W	0.60	
3096.00	17.290	339.330	2981.44	-670.48	671.15	-309.01	1734843.82	14595948.99	40°11'22.496"N	104°39'42.786"W	0.54	
3186.00	17.920	343.250	3067.23	-696.24	696.93	-317.72	1734835.02	14595974.72	40°11'22.751"N	104°39'42.898"W	1.49	
3276.00	16.970	342.500	3153.09	-722.00	722.71	-325.66	1734826.98	14596000.46	40°11'23.006"N	104°39'43.000"W	1.08	
3365.00	17.440	339.890	3238.11	-746.90	747.62	-334.16	1734818.40	14596025.33	40°11'23.252"N	104°39'43.110"W	1.02	
3454.00	18.140	340.170	3322.85	-772.43	773.18	-343.44	1734809.02	14596050.84	40°11'23.505"N	104°39'43.229"W	0.79	
3544.00	18.130	338.620	3408.38	-798.63	799.40	-353.30	1734799.06	14596077.01	40°11'23.764"N	104°39'43.356"W	0.54	
3634.00	17.900	336.150	3493.97	-824.30	825.09	-364.00	1734788.27	14596102.65	40°11'24.017"N	104°39'43.494"W	0.89	
3723.00	18.260	336.270	3578.57	-849.55	850.36	-375.14	1734777.04	14596127.87	40°11'24.267"N	104°39'43.638"W	0.41	
3813.00	18.310	336.050	3664.03	-875.35	876.19	-386.55	1734765.53	14596153.65	40°11'24.522"N	104°39'43.785"W	0.09	
3902.00	17.730	338.740	3748.66	-900.73	901.60	-397.14	1734754.85	14596179.00	40°11'24.774"N	104°39'43.921"W	1.14	
3966.00†	17.704	340.794	3809.63	-918.99	919.87	-403.87	1734748.05	14596197.24	40°11'24.954"N	104°39'44.008"W	0.98	ENTER LANDBOX (400'FSL & 850'FEL,SEC.28) 40.1902650 -104.6622245
3992.00	17.700	341.630	3834.40	-926.47	927.35	-406.42	1734745.47	14596204.71	40°11'25.028"N	104°39'44.041"W	0.98	
4081.00	17.220	341.870	3919.30	-951.81	952.71	-414.78	1734737.02	14596230.03	40°11'25.279"N	104°39'44.149"W	0.55	
4171.00	16.910	341.240	4005.34	-976.85	977.77	-423.14	1734728.57	14596255.04	40°11'25.526"N	104°39'44.256"W	0.40	
4260.00	14.860	343.870	4090.93	-1000.05	1000.99	-430.47	1734721.15	14596278.23	40°11'25.756"N	104°39'44.351"W	2.44	
4349.00	13.330	343.860	4177.25	-1020.86	1021.81	-436.50	1734715.05	14596299.01	40°11'25.961"N	104°39'44.428"W	1.72	
4439.00	12.380	338.610	4265.00	-1039.80	1040.76	-442.90	1734708.58	14596317.93	40°11'26.149"N	104°39'44.511"W	1.67	
4528.00	11.170	332.340	4352.13	-1056.30	1057.28	-450.38	1734701.04	14596334.42	40°11'26.312"N	104°39'44.607"W	1.98	
4618.00	9.410	326.410	4440.68	-1070.14	1071.13	-458.50	1734692.87	14596348.23	40°11'26.449"N	104°39'44.712"W	2.28	
4707.00	8.000	328.820	4528.65	-1081.48	1082.49	-465.73	1734685.60	14596359.56	40°11'26.561"N	104°39'44.805"W	1.64	
4796.00	5.760	321.820	4617.01	-1090.28	1091.30	-471.70	1734679.60	14596368.35	40°11'26.648"N	104°39'44.882"W	2.68	
4912.00	3.910	332.440	4732.59	-1098.35	1099.38	-477.13	1734674.14	14596376.40	40°11'26.728"N	104°39'44.952"W	1.77	
5002.00	3.990	339.720	4822.38	-1104.00	1105.04	-479.63	1734671.61	14596382.05	40°11'26.784"N	104°39'44.984"W	0.56	
5091.00	4.010	341.630	4911.16	-1109.85	1110.90	-481.69	1734669.54	14596387.90	40°11'26.842"N	104°39'45.011"W	0.15	

REFERENCE WELLPATH IDENTIFICATION			
Operator	KERR-MCGEE OIL & GAS ONSHORE LP (WA)	Slot	SLOT#42 CANNON 27C-9HZ(520'FNL & 447'FEL,SEC.33)
Area	COLORADO	Well	CANNON 27C-9HZ
Field	WELD COUNTY (UTM/TRUE NORTH)	Wellbore	CANNON 27C-9HZ AWB
Facility	SEC.33-T3N-R65W		

WELLPATH DATA (242 stations) † = interpolated/extrapolated station												
MD (ft)	Inclination (°)	Azimuth (°)	TVD (ft)	Vert Sect (ft)	North (ft)	East (ft)	Grid East (US ft)	Grid North (US ft)	Latitude	Longitude	DLS (ft/100ft)	Comments
5180.00	1.910	300.890	5000.05	-1113.56	1114.61	-483.94	1734667.27	14596391.60	40°11'26.879"N	104°39'45.040"W	3.20	
5270.00	1.700	291.200	5090.00	-1114.81	1115.87	-486.47	1734664.73	14596392.85	40°11'26.891"N	104°39'45.072"W	0.41	
5360.00	1.350	289.550	5179.97	-1115.64	1116.71	-488.72	1734662.49	14596393.67	40°11'26.899"N	104°39'45.101"W	0.39	
5449.00	1.170	303.540	5268.95	-1116.49	1117.56	-490.46	1734660.74	14596394.52	40°11'26.908"N	104°39'45.124"W	0.40	
5539.00	0.840	306.370	5358.93	-1117.39	1118.46	-491.76	1734659.44	14596395.41	40°11'26.917"N	104°39'45.141"W	0.37	
5628.00	0.980	330.320	5447.92	-1118.44	1119.50	-492.66	1734658.53	14596396.46	40°11'26.927"N	104°39'45.152"W	0.45	
5718.00	1.040	326.160	5537.91	-1119.78	1120.85	-493.50	1734657.69	14596397.80	40°11'26.940"N	104°39'45.163"W	0.11	
5808.00	1.050	333.490	5627.89	-1121.20	1122.27	-494.32	1734656.87	14596399.21	40°11'26.954"N	104°39'45.174"W	0.15	
5897.00	0.670	199.720	5716.89	-1121.43	1122.51	-494.86	1734656.33	14596399.45	40°11'26.957"N	104°39'45.181"W	1.79	
5987.00	2.090	135.320	5806.86	-1119.77	1120.85	-493.88	1734657.31	14596397.79	40°11'26.940"N	104°39'45.168"W	2.11	
6076.00	2.080	120.040	5895.81	-1117.82	1118.88	-491.34	1734659.85	14596395.84	40°11'26.921"N	104°39'45.135"W	0.62	
6165.00	2.210	115.250	5984.74	-1116.28	1117.34	-488.39	1734662.81	14596394.31	40°11'26.906"N	104°39'45.097"W	0.25	
6255.00	2.200	112.980	6074.68	-1114.88	1115.93	-485.23	1734665.97	14596392.91	40°11'26.892"N	104°39'45.057"W	0.10	
6344.00	1.880	105.190	6163.62	-1113.83	1114.88	-482.25	1734668.96	14596391.87	40°11'26.881"N	104°39'45.018"W	0.47	
6434.00	2.070	110.380	6253.57	-1112.89	1113.93	-479.30	1734671.91	14596390.93	40°11'26.872"N	104°39'44.980"W	0.29	
6523.00	2.620	107.850	6342.49	-1111.71	1112.74	-475.86	1734675.35	14596389.76	40°11'26.860"N	104°39'44.936"W	0.63	
6570.00†	2.481	154.987	6389.45	-1110.46	1111.49	-474.41	1734676.81	14596388.52	40°11'26.848"N	104°39'44.917"W	4.35	KOP
6613.00	3.580	184.390	6432.39	-1108.28	1109.31	-474.12	1734677.11	14596386.34	40°11'26.826"N	104°39'44.913"W	4.35	
6702.00	10.520	177.500	6520.67	-1097.38	1098.41	-473.97	1734677.29	14596375.44	40°11'26.718"N	104°39'44.911"W	7.84	
6792.00	19.470	172.900	6607.52	-1074.24	1075.27	-471.76	1734679.60	14596352.32	40°11'26.490"N	104°39'44.883"W	10.02	
6881.00	22.750	183.100	6690.56	-1042.32	1043.35	-470.85	1734680.62	14596320.41	40°11'26.174"N	104°39'44.871"W	5.52	
6971.00	28.070	187.040	6771.83	-1003.90	1004.92	-474.39	1734677.23	14596281.99	40°11'25.795"N	104°39'44.917"W	6.20	
7061.00	36.230	185.370	6847.97	-956.31	957.35	-479.49	1734672.32	14596234.42	40°11'25.324"N	104°39'44.982"W	9.12	
7150.00	46.500	178.950	6914.70	-897.66	898.71	-481.36	1734670.67	14596175.79	40°11'24.745"N	104°39'45.007"W	12.47	
7240.00	51.310	179.940	6973.85	-829.86	830.90	-480.73	1734671.57	14596108.02	40°11'24.075"N	104°39'44.998"W	5.41	
7329.00	58.300	180.110	7025.11	-757.18	758.22	-480.76	1734671.81	14596035.36	40°11'23.357"N	104°39'44.999"W	7.86	
7419.00	64.320	179.660	7068.30	-678.26	679.30	-480.60	1734672.28	14595956.48	40°11'22.577"N	104°39'44.997"W	6.70	
7509.00	67.690	178.540	7104.89	-596.07	597.11	-479.29	1734673.89	14595874.32	40°11'21.765"N	104°39'44.980"W	3.91	
7598.00	73.000	180.170	7134.82	-512.29	513.33	-478.37	1734675.13	14595790.58	40°11'20.937"N	104°39'44.968"W	6.21	
7688.00	77.750	180.870	7157.54	-425.24	426.28	-479.17	1734674.67	14595703.56	40°11'20.076"N	104°39'44.978"W	5.33	
7777.00	84.940	181.550	7170.92	-337.33	338.37	-481.03	1734673.15	14595615.68	40°11'19.208"N	104°39'45.002"W	8.11	
7824.00	89.230	181.660	7173.31	-290.41	291.46	-482.34	1734672.01	14595568.78	40°11'18.744"N	104°39'45.019"W	9.13	LANDING (229'FNL & 929'FEL,SEC.33) 40.1885400 -104.6625053
7867.00	90.250	181.200	7173.50	-247.43	248.47	-483.42	1734671.10	14595525.81	40°11'18.319"N	104°39'45.033"W	2.60	EXIT RADIUS HEEL (272'FNL & 930'FEL,SEC.33) 40.1884220 -104.6625091
7956.00	91.320	181.660	7172.29	-158.46	159.51	-485.64	1734669.22	14595436.87	40°11'17.440"N	104°39'45.061"W	1.31	
8046.00	91.540	180.280	7170.04	-68.50	69.55	-487.16	1734668.04	14595346.95	40°11'16.551"N	104°39'45.081"W	1.55	
8136.00	89.140	179.370	7169.51	21.49	-20.44	-486.89	1734668.66	14595256.99	40°11'15.662"N	104°39'45.078"W	2.85	
8225.00	89.080	178.390	7170.89	110.46	-109.41	-485.15	1734670.74	14595168.06	40°11'14.783"N	104°39'45.055"W	1.10	
8315.00	89.970	178.020	7171.63	200.40	-199.36	-482.33	1734673.90	14595078.16	40°11'13.894"N	104°39'45.019"W	1.07	
8405.00	89.140	179.780	7172.33	290.38	-289.34	-480.60	1734675.97	14594988.22	40°11'13.005"N	104°39'44.996"W	2.16	
8494.00	90.000	179.590	7173.00	379.37	-378.33	-480.11	1734676.80	14594899.27	40°11'12.125"N	104°39'44.990"W	0.99	
8584.00	89.230	180.940	7173.61	469.37	-468.33	-480.53	1734676.73	14594809.31	40°11'11.236"N	104°39'44.995"W	1.73	
8674.00	90.030	180.840	7174.19	559.35	-558.31	-481.92	1734675.68	14594719.35	40°11'10.347"N	104°39'45.013"W	0.90	
8763.00	88.920	180.470	7175.00	648.35	-647.30	-482.94	1734675.00	14594630.39	40°11'09.467"N	104°39'45.027"W	1.31	
8853.00	89.720	181.000	7176.07	738.33	-737.29	-484.10	1734674.19	14594540.44	40°11'08.578"N	104°39'45.041"W	1.07	
8942.00	89.320	180.830	7176.82	827.32	-826.27	-485.52	1734673.11	14594451.48	40°11'07.699"N	104°39'45.060"W	0.49	

REFERENCE WELLPATH IDENTIFICATION			
Operator	KERR-MCGEE OIL & GAS ONSHORE LP (WA)	Slot	SLOT#42 CANNON 27C-9HZ(520'FNL & 447'FEL,SEC.33)
Area	COLORADO	Well	CANNON 27C-9HZ
Field	WELD COUNTY (UTM/TRUE NORTH)	Wellbore	CANNON 27C-9HZ AWB
Facility	SEC.33-T3N-R65W		

WELLPATH DATA (242 stations)												
MD [ft]	Inclination [°]	Azimuth [°]	TVD [ft]	Vert Sect [ft]	North [ft]	East [ft]	Grid East [US ft]	Grid North [US ft]	Latitude	Longitude	DLS [°/100ft]	Comments
9032.00	90.120	180.540	7177.26	917.31	-916.26	-486.59	1734672.37	14594361.52	40°11'06.809"N	104°39'45.074"W	0.95	
9121.00	88.860	179.900	7178.05	1006.31	-1005.26	-486.93	1734672.37	14594272.56	40°11'05.930"N	104°39'45.078"W	1.59	
9211.00	89.170	180.480	7179.60	1096.30	-1095.24	-487.23	1734672.42	14594182.61	40°11'05.041"N	104°39'45.082"W	0.73	
9300.00	89.510	180.670	7180.62	1185.29	-1184.23	-488.13	1734671.87	14594093.66	40°11'04.161"N	104°39'45.093"W	0.44	
9390.00	90.520	180.810	7180.60	1275.28	-1274.22	-489.29	1734671.05	14594003.70	40°11'03.272"N	104°39'45.108"W	1.13	
9479.00	91.260	181.040	7179.21	1364.26	-1363.20	-490.73	1734669.95	14593914.75	40°11'02.393"N	104°39'45.127"W	0.87	
9569.00	90.710	179.820	7177.67	1454.24	-1453.18	-491.40	1734669.62	14593824.80	40°11'01.504"N	104°39'45.135"W	1.49	
9658.00	91.540	180.000	7175.92	1543.22	-1542.17	-491.26	1734670.10	14593735.86	40°11'00.624"N	104°39'45.133"W	0.95	
9748.00	90.370	179.320	7174.42	1633.21	-1632.15	-490.73	1734670.98	14593645.91	40°10'59.735"N	104°39'45.127"W	1.50	
9837.00	90.990	179.850	7173.36	1722.20	-1721.14	-490.08	1734671.96	14593556.96	40°10'58.856"N	104°39'45.118"W	0.92	
9927.00	91.480	179.350	7171.42	1812.17	-1811.12	-489.45	1734672.93	14593467.02	40°10'57.966"N	104°39'45.110"W	0.78	
10016.00	89.820	180.360	7170.41	1901.16	-1900.11	-489.23	1734673.50	14593378.07	40°10'57.087"N	104°39'45.107"W	2.18	
10106.00	90.280	180.060	7170.34	1991.16	-1990.10	-489.56	1734673.51	14593288.10	40°10'56.198"N	104°39'45.111"W	0.61	
10196.00	91.170	179.950	7169.20	2081.15	-2080.10	-489.57	1734673.85	14593198.14	40°10'55.308"N	104°39'45.112"W	1.00	
10285.00	89.660	179.350	7168.55	2170.14	-2169.09	-489.02	1734674.73	14593109.19	40°10'54.429"N	104°39'45.104"W	1.83	
10375.00	90.180	179.600	7168.68	2260.14	-2259.09	-488.20	1734675.90	14593019.23	40°10'53.540"N	104°39'45.094"W	0.64	
10464.00	88.060	179.260	7170.04	2349.11	-2348.07	-487.31	1734677.12	14592930.29	40°10'52.660"N	104°39'45.082"W	2.41	
10554.00	88.280	178.630	7172.92	2439.05	-2438.00	-485.66	1734679.12	14592840.40	40°10'51.772"N	104°39'45.061"W	0.74	
10643.00	88.710	177.840	7175.26	2527.97	-2526.93	-482.92	1734682.20	14592751.52	40°10'50.893"N	104°39'45.026"W	1.01	
10732.00	89.380	178.560	7176.74	2616.91	-2615.87	-480.12	1734685.33	14592662.62	40°10'50.014"N	104°39'44.990"W	1.10	
10822.00	90.220	180.870	7177.05	2706.90	-2705.86	-479.67	1734686.13	14592572.67	40°10'49.125"N	104°39'44.984"W	2.73	
10912.00	91.820	181.340	7175.45	2796.86	-2795.83	-481.41	1734684.74	14592482.73	40°10'48.236"N	104°39'45.006"W	1.85	
11001.00	89.420	181.870	7174.49	2885.82	-2884.78	-483.90	1734682.58	14592393.80	40°10'47.357"N	104°39'45.038"W	2.76	
11091.00	90.370	181.920	7174.65	2975.78	-2974.73	-486.88	1734679.95	14592303.88	40°10'46.468"N	104°39'45.077"W	1.06	
11180.00	90.180	182.720	7174.23	3064.71	-3063.66	-490.48	1734676.69	14592214.97	40°10'45.589"N	104°39'45.123"W	0.92	
11270.00	89.480	182.280	7174.49	3154.63	-3153.57	-494.41	1734673.11	14592125.08	40°10'44.700"N	104°39'45.174"W	0.92	
11359.00	89.010	183.850	7175.67	3243.51	-3242.43	-499.16	1734668.69	14592036.24	40°10'43.822"N	104°39'45.235"W	1.84	
11449.00	90.400	183.950	7176.13	3333.31	-3332.22	-505.29	1734662.92	14591946.46	40°10'42.935"N	104°39'45.314"W	1.55	
11538.00	89.200	182.160	7176.44	3422.18	-3421.09	-510.03	1734658.52	14591857.61	40°10'42.057"N	104°39'45.375"W	2.42	
11628.00	88.610	181.100	7178.16	3512.14	-3511.03	-512.59	1734656.30	14591767.69	40°10'41.168"N	104°39'45.408"W	1.35	
11718.00	88.580	180.620	7180.37	3602.10	-3601.00	-513.94	1734655.29	14591677.76	40°10'40.279"N	104°39'45.425"W	0.53	
11807.00	89.850	180.310	7181.59	3691.09	-3689.98	-514.66	1734654.91	14591588.80	40°10'39.399"N	104°39'45.434"W	1.47	
11897.00	89.510	180.130	7182.09	3781.09	-3779.98	-515.01	1734654.91	14591498.84	40°10'38.510"N	104°39'45.439"W	0.43	
11986.00	90.590	180.280	7182.01	3870.09	-3868.98	-515.32	1734654.93	14591409.88	40°10'37.631"N	104°39'45.443"W	1.23	
12076.00	88.550	179.180	7182.70	3962.07	-3960.97	-514.89	1734655.72	14591317.93	40°10'36.722"N	104°39'45.437"W	2.52	
12172.00	88.890	179.050	7184.80	4056.04	-4054.93	-513.44	1734657.53	14591224.00	40°10'35.793"N	104°39'45.419"W	0.39	
12264.00	89.720	178.380	7185.92	4148.00	-4146.90	-511.38	1734659.94	14591132.08	40°10'34.884"N	104°39'45.392"W	1.16	
12355.00	89.350	178.470	7186.66	4238.96	-4237.87	-508.88	1734662.79	14591041.16	40°10'33.985"N	104°39'45.360"W	0.42	
12448.00	90.460	178.520	7186.81	4331.92	-4330.83	-506.43	1734665.58	14590948.24	40°10'33.067"N	104°39'45.328"W	1.19	
12538.00	89.380	179.380	7186.94	4421.90	-4420.81	-504.78	1734667.58	14590858.30	40°10'32.177"N	104°39'45.307"W	1.53	
12632.00	90.920	180.020	7186.69	4515.89	-4514.81	-504.29	1734668.43	14590764.35	40°10'31.249"N	104°39'45.301"W	1.77	
12723.00	88.460	178.940	7187.18	4606.88	-4605.80	-503.47	1734669.60	14590673.40	40°10'30.349"N	104°39'45.290"W	2.95	
12815.00	89.320	178.460	7188.96	4698.83	-4697.75	-501.38	1734672.04	14590581.49	40°10'29.441"N	104°39'45.263"W	1.07	
12907.00	90.710	179.090	7188.94	4790.80	-4789.73	-499.41	1734674.35	14590489.55	40°10'28.532"N	104°39'45.238"W	1.66	
12997.00	87.720	177.290	7190.17	4880.73	-4879.66	-496.57	1734677.54	14590399.67	40°10'27.643"N	104°39'45.201"W	3.88	

REFERENCE WELLPATH IDENTIFICATION			
Operator	KERR-MCGEE OIL & GAS ONSHORE LP (WA)	Slot	SLOT#42 CANNON 27C-9HZ(520'FNL & 447'FEL,SEC.33)
Area	COLORADO	Well	CANNON 27C-9HZ
Field	WELD COUNTY (UTM/TRUE NORTH)	Wellbore	CANNON 27C-9HZ AWB
Facility	SEC.33-T3N-R65W		

WELLPATH DATA (242 stations)												
MD [ft]	Inclination [°]	Azimuth [°]	TVD [ft]	Vert Sect [ft]	North [ft]	East [ft]	Grid East [US ft]	Grid North [US ft]	Latitude	Longitude	DLS [°/100ft]	Comments
13087.00	88.490	178.770	7193.15	4970.61	-4969.56	-493.48	1734680.97	14590309.82	40°10'26.755"N	104°39'45.161"W	1.85	
13176.00	89.970	180.170	7194.35	5059.60	-5058.54	-492.66	1734682.13	14590220.88	40°10'25.875"N	104°39'45.151"W	2.29	
13266.00	90.920	180.020	7193.65	5149.59	-5148.54	-492.81	1734682.33	14590130.92	40°10'24.986"N	104°39'45.152"W	1.07	
13356.00	92.030	179.990	7191.33	5239.56	-5238.51	-492.81	1734682.66	14590040.98	40°10'24.097"N	104°39'45.153"W	1.23	
13445.00	89.820	181.010	7189.89	5328.54	-5327.48	-493.59	1734682.23	14589952.04	40°10'23.218"N	104°39'45.162"W	2.73	
13535.00	90.090	180.710	7189.96	5418.53	-5417.47	-494.94	1734681.22	14589862.08	40°10'22.328"N	104°39'45.180"W	0.45	
13624.00	90.800	180.190	7189.27	5507.53	-5506.47	-495.64	1734680.86	14589773.12	40°10'21.449"N	104°39'45.189"W	0.99	
13714.00	89.420	181.470	7189.10	5597.52	-5596.45	-496.94	1734679.90	14589683.16	40°10'20.560"N	104°39'45.206"W	2.09	
13803.00	89.750	181.320	7189.74	5686.49	-5685.43	-499.11	1734678.08	14589594.22	40°10'19.680"N	104°39'45.234"W	0.41	
13893.00	89.660	180.430	7190.21	5776.48	-5775.41	-500.48	1734677.05	14589504.26	40°10'18.791"N	104°39'45.251"W	0.99	
13982.00	89.080	180.060	7191.19	5865.48	-5864.41	-500.86	1734677.01	14589415.30	40°10'17.912"N	104°39'45.256"W	0.77	
14072.00	89.230	179.570	7192.51	5955.46	-5954.40	-500.57	1734677.64	14589325.35	40°10'17.023"N	104°39'45.252"W	0.57	
14161.00	89.660	179.160	7193.38	6044.45	-6043.39	-499.59	1734678.97	14589236.40	40°10'16.143"N	104°39'45.240"W	0.67	
14250.00	91.690	180.080	7192.33	6133.44	-6132.37	-499.00	1734679.90	14589147.45	40°10'15.264"N	104°39'45.232"W	2.50	
14340.00	90.800	179.710	7190.37	6223.41	-6222.35	-498.83	1734680.40	14589057.51	40°10'14.375"N	104°39'45.230"W	1.07	
14429.00	90.740	178.960	7189.18	6312.40	-6311.33	-497.80	1734681.78	14588968.56	40°10'13.495"N	104°39'45.216"W	0.85	
14519.00	91.600	178.010	7187.34	6402.34	-6401.28	-495.42	1734684.50	14588878.66	40°10'12.606"N	104°39'45.186"W	1.42	
14609.00	90.490	178.800	7185.70	6492.28	-6491.23	-492.92	1734687.34	14588788.76	40°10'11.718"N	104°39'45.154"W	1.51	
14698.00	89.080	180.550	7186.03	6581.27	-6580.22	-492.41	1734688.19	14588699.80	40°10'10.838"N	104°39'45.147"W	2.53	
14788.00	89.880	180.100	7186.85	6671.27	-6670.22	-492.92	1734688.02	14588609.84	40°10'09.949"N	104°39'45.154"W	1.02	
14877.00	89.050	181.540	7187.68	6760.25	-6759.20	-494.20	1734687.09	14588520.89	40°10'09.069"N	104°39'45.170"W	1.87	
14967.00	89.940	180.730	7188.47	6850.23	-6849.18	-495.98	1734685.65	14588430.94	40°10'08.180"N	104°39'45.193"W	1.34	
15056.00	90.340	180.590	7188.25	6939.23	-6938.17	-497.00	1734684.97	14588341.98	40°10'07.301"N	104°39'45.206"W	0.48	
15146.00	88.280	180.420	7189.34	7029.22	-7028.16	-497.80	1734684.52	14588252.03	40°10'06.412"N	104°39'45.216"W	2.30	
15235.00	89.170	180.660	7191.32	7118.19	-7117.13	-498.63	1734684.02	14588163.09	40°10'05.532"N	104°39'45.227"W	1.04	
15325.00	89.720	180.520	7192.19	7208.18	-7207.12	-499.56	1734683.44	14588073.13	40°10'04.643"N	104°39'45.239"W	0.63	
15414.00	90.430	180.750	7192.07	7297.18	-7296.11	-500.55	1734682.79	14587984.17	40°10'03.764"N	104°39'45.252"W	0.84	
15504.00	91.320	180.820	7190.70	7387.16	-7386.09	-501.78	1734681.90	14587894.22	40°10'02.874"N	104°39'45.267"W	0.99	
15593.00	89.910	180.850	7189.74	7476.15	-7475.08	-503.08	1734680.94	14587805.27	40°10'01.995"N	104°39'45.284"W	1.58	
15683.00	90.710	180.390	7189.26	7566.14	-7565.07	-504.05	1734680.31	14587715.31	40°10'01.106"N	104°39'45.297"W	1.03	
15773.00	91.510	180.060	7187.51	7656.12	-7655.05	-504.41	1734680.31	14587625.36	40°10'00.217"N	104°39'45.301"W	0.96	
15862.00	90.120	179.920	7186.25	7745.11	-7744.04	-504.39	1734680.66	14587536.40	40°09'59.337"N	104°39'45.301"W	1.57	
15952.00	90.740	179.460	7185.57	7835.11	-7834.04	-503.90	1734681.49	14587446.45	40°09'58.448"N	104°39'45.295"W	0.86	
16041.00	91.600	178.880	7183.76	7924.08	-7923.01	-502.61	1734683.12	14587357.52	40°09'57.569"N	104°39'45.278"W	1.17	
16130.00	90.090	180.050	7182.44	8013.06	-8011.99	-501.78	1734684.29	14587268.57	40°09'56.689"N	104°39'45.267"W	2.15	
16220.00	89.940	181.440	7182.42	8103.05	-8101.98	-502.95	1734683.46	14587178.61	40°09'55.800"N	104°39'45.282"W	1.55	
16310.00	90.620	181.180	7181.98	8193.03	-8191.95	-505.01	1734681.75	14587088.67	40°09'54.911"N	104°39'45.309"W	0.81	
16399.00	89.750	182.360	7181.69	8281.99	-8280.91	-507.76	1734679.34	14586999.74	40°09'54.032"N	104°39'45.344"W	1.65	
16488.00	90.590	182.230	7181.43	8370.92	-8369.84	-511.32	1734676.12	14586910.83	40°09'53.153"N	104°39'45.390"W	0.96	
16578.00	89.020	181.850	7181.73	8460.87	-8459.77	-514.53	1734673.26	14586820.92	40°09'52.264"N	104°39'45.431"W	1.79	
16668.00	89.660	181.570	7182.77	8550.83	-8549.73	-517.21	1734670.92	14586730.99	40°09'51.375"N	104°39'45.466"W	0.78	
16757.00	88.460	181.400	7184.23	8639.79	-8638.68	-519.52	1734668.95	14586642.06	40°09'50.496"N	104°39'45.496"W	1.36	
16847.00	89.110	181.430	7186.14	8729.75	-8728.64	-521.74	1734667.08	14586552.13	40°09'49.607"N	104°39'45.524"W	0.72	
16936.00	90.180	181.110	7186.69	8818.72	-8817.61	-523.71	1734665.44	14586463.19	40°09'48.728"N	104°39'45.550"W	1.25	
17026.00	91.600	180.950	7185.29	8908.70	-8907.58	-525.33	1734664.17	14586373.25	40°09'47.839"N	104°39'45.570"W	1.59	

REFERENCE WELLPATH IDENTIFICATION			
Operator	KERR-MCGEE OIL & GAS ONSHORE LP (WA)	Slot	SLOT#42 CANNON 27C-9HZ(520'FNL & 447'FEL,SEC.33)
Area	COLORADO	Well	CANNON 27C-9HZ
Field	WELD COUNTY (UTM/TRUE NORTH)	Wellbore	CANNON 27C-9HZ AWB
Facility	SEC.33-T3N-R65W		

WELLPATH DATA (242 stations) † = interpolated/extrapolated station												
MD [ft]	Inclination [°]	Azimuth [°]	TVD [ft]	Vert Sect [ft]	North [ft]	East [ft]	Grid East [US ft]	Grid North [US ft]	Latitude	Longitude	DLS ["/100ft]	Comments
17115.00	90.370	179.230	7183.76	8997.68	-8996.57	-525.47	1734664.37	14586284.30	40°09'46.960"N	104°39'45.572"W	2.38	
17205.00	88.680	178.470	7184.51	9087.65	-9086.54	-523.66	1734666.52	14586194.37	40°09'46.071"N	104°39'45.549"W	2.06	
17294.00	89.850	178.360	7185.65	9176.60	-9175.50	-521.20	1734669.32	14586105.45	40°09'45.191"N	104°39'45.517"W	1.32	
17384.00	88.580	179.120	7186.88	9266.57	-9265.46	-519.22	1734671.64	14586015.53	40°09'44.302"N	104°39'45.492"W	1.64	
17473.00	89.200	178.930	7188.61	9355.53	-9354.43	-517.71	1734673.50	14585926.60	40°09'43.423"N	104°39'45.472"W	0.73	
17563.00	90.460	178.590	7188.87	9445.51	-9444.41	-515.76	1734675.79	14585836.67	40°09'42.534"N	104°39'45.447"W	1.45	
17652.00	91.760	178.650	7187.15	9534.46	-9533.37	-513.62	1734678.27	14585747.76	40°09'41.655"N	104°39'45.419"W	1.46	
17742.00	89.350	178.990	7186.28	9624.42	-9623.34	-511.77	1734680.46	14585657.83	40°09'40.766"N	104°39'45.395"W	2.70	
17817.00†	88.339	179.538	7187.79	9699.40	-9698.31	-510.80	1734681.71	14585582.89	40°09'40.025"N	104°39'45.383"W	1.53	ENTER RADIUS TOE (227'FSL & 914'FEL,SEC.04) 40.1611180 -104.6626064
17831.00	88.150	179.640	7188.22	9713.39	-9712.31	-510.70	1734681.87	14585568.90	40°09'39.887"N	104°39'45.382"W	1.53	
17921.00	89.200	179.050	7190.30	9803.36	-9802.28	-509.67	1734683.24	14585478.97	40°09'38.998"N	104°39'45.368"W	1.34	
18010.00	90.580	179.450	7190.47	9892.34	-9891.27	-508.51	1734684.74	14585390.02	40°09'38.118"N	104°39'45.353"W	1.61	
18099.00	87.940	180.090	7191.62	9981.33	-9980.25	-508.15	1734685.44	14585301.07	40°09'37.239"N	104°39'45.349"W	3.05	
18189.00	89.110	179.860	7193.94	10071.29	-10070.22	-508.11	1734685.82	14585211.14	40°09'36.350"N	104°39'45.348"W	1.32	
18278.00	90.340	179.700	7194.37	10160.29	-10159.21	-507.77	1734686.50	14585122.18	40°09'35.470"N	104°39'45.344"W	1.39	
18356.00	91.110	179.380	7193.38	10238.28	-10237.20	-507.14	1734687.43	14585044.22	40°09'34.700"N	104°39'45.336"W	1.07	LAST BHGE MWD+IFR1+MSA SURVEY
18403.00	91.110	179.380	7192.47	10285.27	-10284.19	-506.64	1734688.12	14584997.26	40°09'34.235"N	104°39'45.329"W	0.00	PTB (359'FNL & 909'FEL,SEC.09) 40.1595098 -104.6625914

TARGETS								
Name	TVD [ft]	North [ft]	East [ft]	Grid East [US ft]	Grid North [US ft]	Latitude	Longitude	Shape
SEC.04-T2N-R65W	-26.00	149.65	-3800.91	1731355.31	14595414.36	40°11'17.340"N	104°40'27.779"W	polygon
SEC.33-T3N-R65W	-26.00	149.65	-3800.91	1731355.31	14595414.36	40°11'17.340"N	104°40'27.779"W	polygon
SEC.09-T2N-R65W	0.00	-0.71	89.95	1735245.19	14595278.92	40°11'15.857"N	104°39'37.645"W	polygon
CANNON 27C-9HZ HEEL REV-1(152'FNL & 928'FEL,SEC.33)	7166.00	368.31	-481.98	1734672.08	14595645.60	40°11'19.504"N	104°39'45.014"W	point
CANNON 27C-9HZ BHL REV-1(360'FNL & 907'FEL,SEC.09)	7189.00	-10284.85	-505.12	1734689.64	14584996.61	40°09'34.229"N	104°39'45.310"W	point
CANNON 27C-9HZ LANDBOX	7189.00	0.00	0.00	1735155.27	14595279.28	40°11'15.864"N	104°39'38.804"W	polygon
CANNON 27C-9HZ RADIUS 1	7189.00	517.81	-859.64	1734294.00	14595793.60	40°11'20.981"N	104°39'49.881"W	polygon
CANNON 27C-9HZ RADIUS 2	7189.00	-9923.75	-914.74	1734278.80	14585356.00	40°09'37.797"N	104°39'50.586"W	polygon

REFERENCE WELLPATH IDENTIFICATION			
Operator	KERR-MCGEE OIL & GAS ONSHORE LP (WA)	Slot	SLOT#42 CANNON 27C-9HZ(520'FNL & 447'FEL,SEC.33)
Area	COLORADO	Well	CANNON 27C-9HZ
Field	WELD COUNTY (UTM/TRUE NORTH)	Wellbore	CANNON 27C-9HZ AWB
Facility	SEC.33-T3N-R65W		

WELLPATH COMPOSITION - Ref Wellbore: CANNON 27C-9HZ AWB Ref Wellpath: CANNON 27C-9HZ AWP				
Start MD [ft]	End MD [ft]	Positional Uncertainty Model	Log Name/Comment	Wellbore
26.00	1847.00	Custom APC ISCWSA REV 2 MWD+IFR1 (approximation)	Custom APC ISCWSA Rev-2 MWD+IFR1 <137 - 1847>	CANNON 27C-9HZ AWB
1847.00	18356.00	Custom APC ISCWSA REV 2 MWD+IFR1+MSA (approximation)	BHGE Custom APC ISCWSA Rev-2 MWD+IFR1+MSA <1935 - 18356>	CANNON 27C-9HZ AWB
18356.00	18403.00	Blind Drilling (std)	Projection to bit	CANNON 27C-9HZ AWB

REFERENCE WELLPATH IDENTIFICATION			
Operator	KERR-MCGEE OIL & GAS ONSHORE LP (WA)	Slot	SLOT#42 CANNON 27C-9HZ(520'FNL & 447'FEL,SEC.33)
Area	COLORADO	Well	CANNON 27C-9HZ
Field	WELD COUNTY (UTM/TRUE NORTH)	Wellbore	CANNON 27C-9HZ AWB
Facility	SEC.33-T3N-R65W		

WELLPATH COMMENTS				
MD [ft]	Inclination [°]	Azimuth [°]	TVD [ft]	Comment
137.00	0.530	157.560	137.00	FIRST SURFACE MWD+IFR1 SURVEY
1847.00	18.280	335.610	1797.05	LAST SURFACE MWD+IFR1 SURVEY
1935.00	18.170	333.610	1880.63	FIRST BHGE MWD+IFR1+MSA SURVEY
3966.00	17.704	340.794	3809.63	ENTER LANDBOX (400'FSL & 850'FEL,SEC.28) 40.1902650 -104.6622245
6570.00	2.481	154.987	6389.45	KOP
7824.00	89.230	181.660	7173.31	LANDING (229'FNL & 929'FEL,SEC.33) 40.1885400 -104.6625053
7867.00	90.250	181.200	7173.50	EXIT RADIUS HEEL (272'FNL & 930'FEL,SEC.33) 40.1884220 -104.6625091
17817.00	88.339	179.538	7187.79	ENTER RADIUS TOE (227'FSL & 914'FEL,SEC.04) 40.1611180 -104.6626064
18356.00	91.110	179.380	7193.38	LAST BHGE MWD+IFR1+MSA SURVEY
18403.00	91.110	179.380	7192.47	PTB (359'FNL & 909'FEL,SEC.09) 40.1595098 -104.6625914