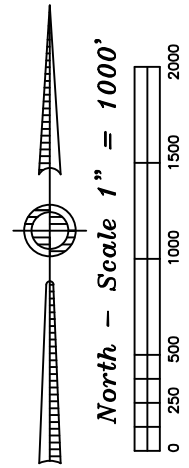
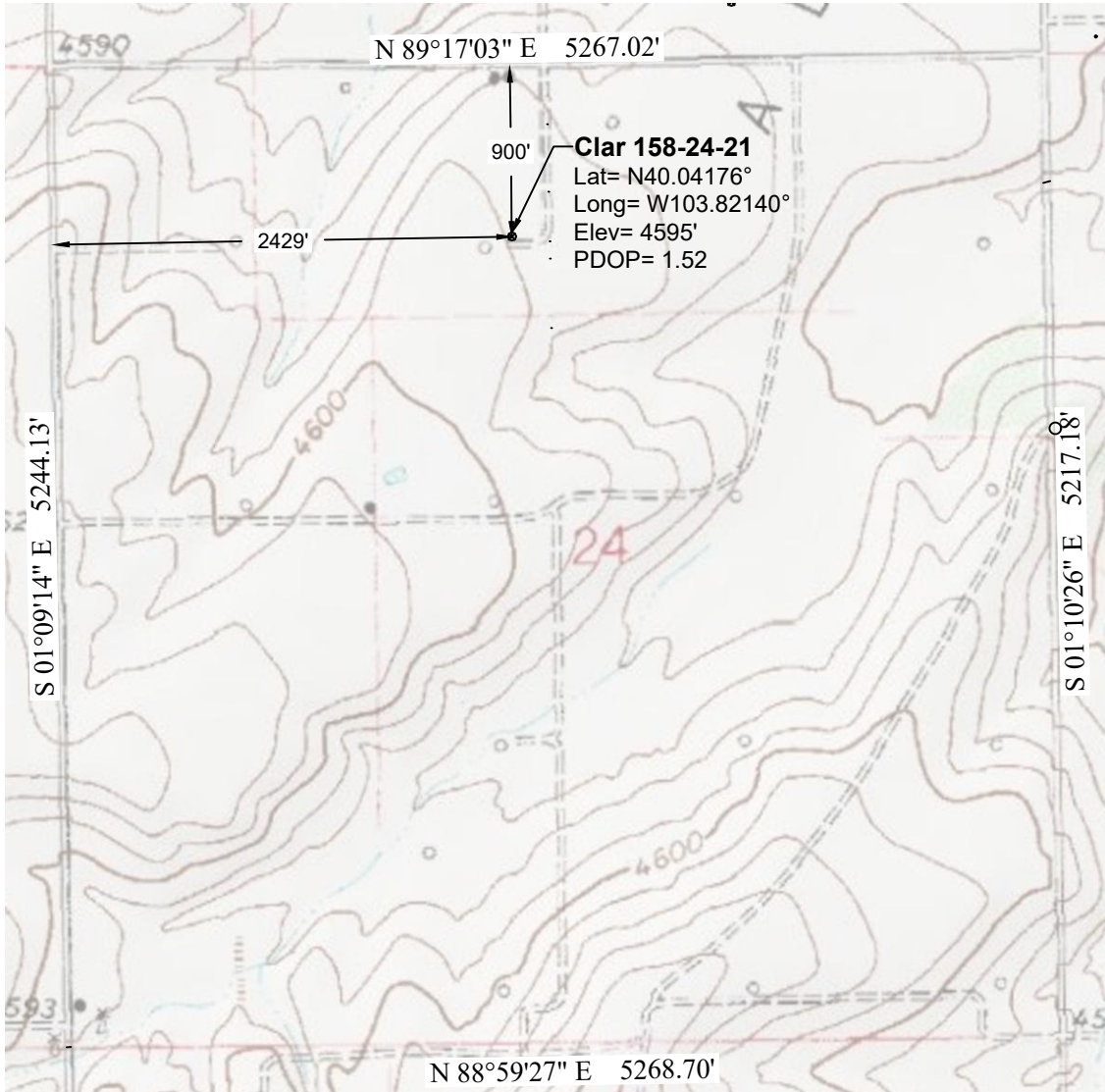


Topographic Exhibit



Notes:

- In accordance with a request from PCR Operating LLC, PLS Group has determined the location of the Clar 158-24-21 well to be 2429' FWL and 900' FNL as measured perpendicular to the section lines.
- Survey elevations based on NAVD 88 Datum using GPS observed heights and Geoid 12B corrections.
- Distances shown are in SPC grid feet. Ground scale factor= 1.000252455.
- There are no improvements within 100' of the proposed well site.
- Apparent Land Use is range land.
- Vegetation is native grass.
- Topographic map contours and spot elevations based on NGVD 1929 Datum.
- Topographic map dated 1978.

P:\Project\2017\17133\dwg\17133_Topo.dwg December 01, 2017 - 3:12pm

Well Name: Clar 158-24-21	Field Date 11.16.2017	Prepared for: PCR Operating LLC Project#: 1733.001
Section 24-T1N-R58W-6th PM, NE-NW	Party Chief ADS	PLS Group 6843 North Franklin Avenue Loveland, Colorado 80538 970.669.2100 office - 970.669.3652 fax
Morgan County, Colorado	Proj. Manager ZNB	
	Drawing Date 11.29.2017	