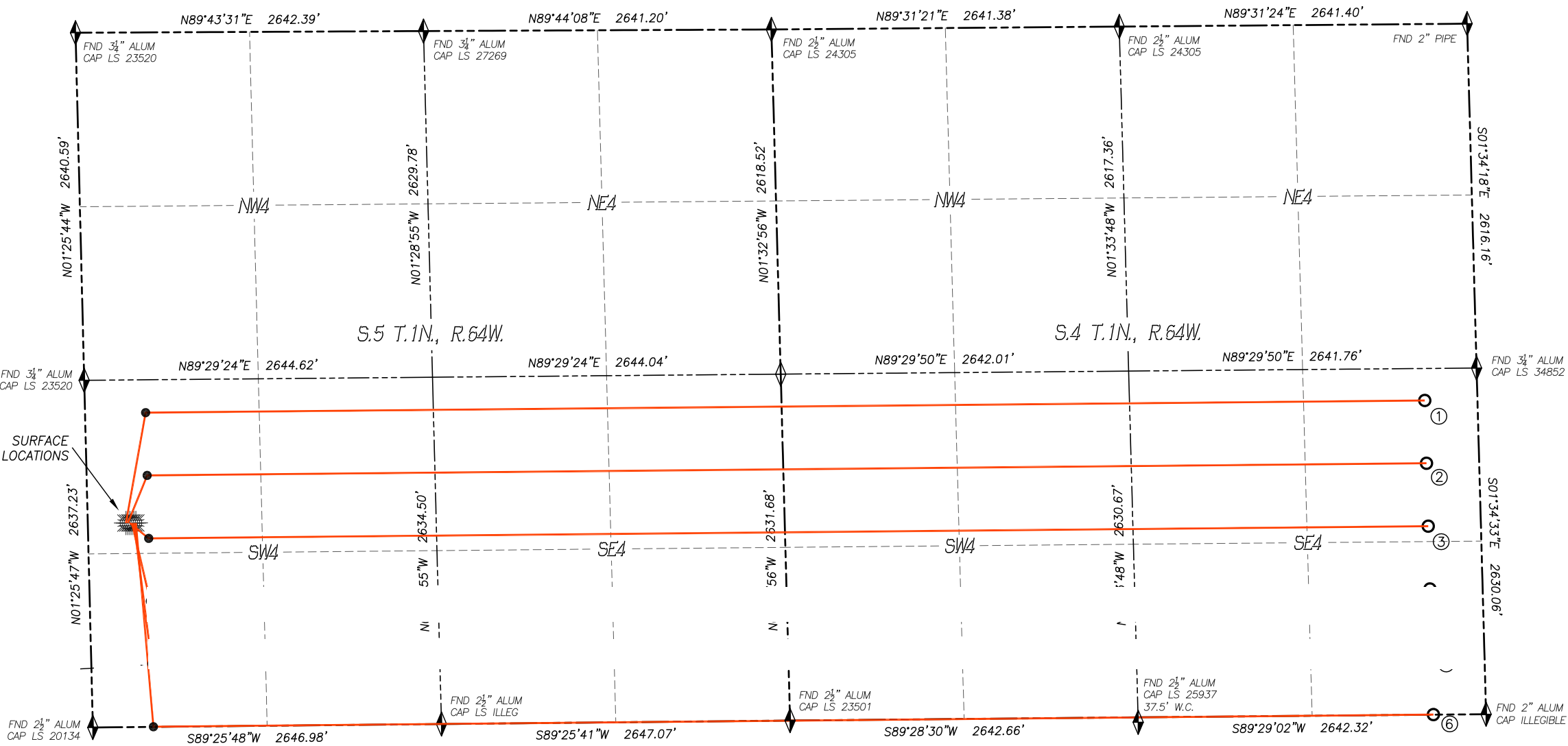


MULTI WELL PLAN  
1-64-5\_4 NWSW 5 WELL PAD  
SECTION 5, TOWNSHIP 1 NORTH, RANGE 64 WEST OF THE 6TH P.M., WELD COUNTY



Bottom Hole Location (NAD83)						
No.	Well Name	Latitude	Longitude	Footage	BH Location STR	
1	Grinde-01-64-05-3340B	N40.07977°	W104.54796°	2387' FSL 400' FEL	4-1N-64W	
2	Grinde-01-64-05-4841C	N40.07846°	W104.54793°	1910' FSL 400' FEL	4-1N-64W	
3	Grinde-01-64-05-4841B	N40.07715°	W104.54790°	1432' FSL 400' FEL	4-1N-64W	
4	Grinde-01-64-05-6457CB	N40.07322°	W104.54781°	1' FSL 400' FEL	4-1N-64W	

**LEGEND**

- FOUND MONUMENT AS DESCRIBED
- PROPOSED WELL
- EXISTING WELL
- BOTTOM HOLE
- ABANDONED WELL
- CALCULATED POSITION

0 1000'  
SCALE: 1" = 1000'

**Bill Barrett Corporation**

**DALEY LAND SURVEYING, INC.**  
303.953.9841