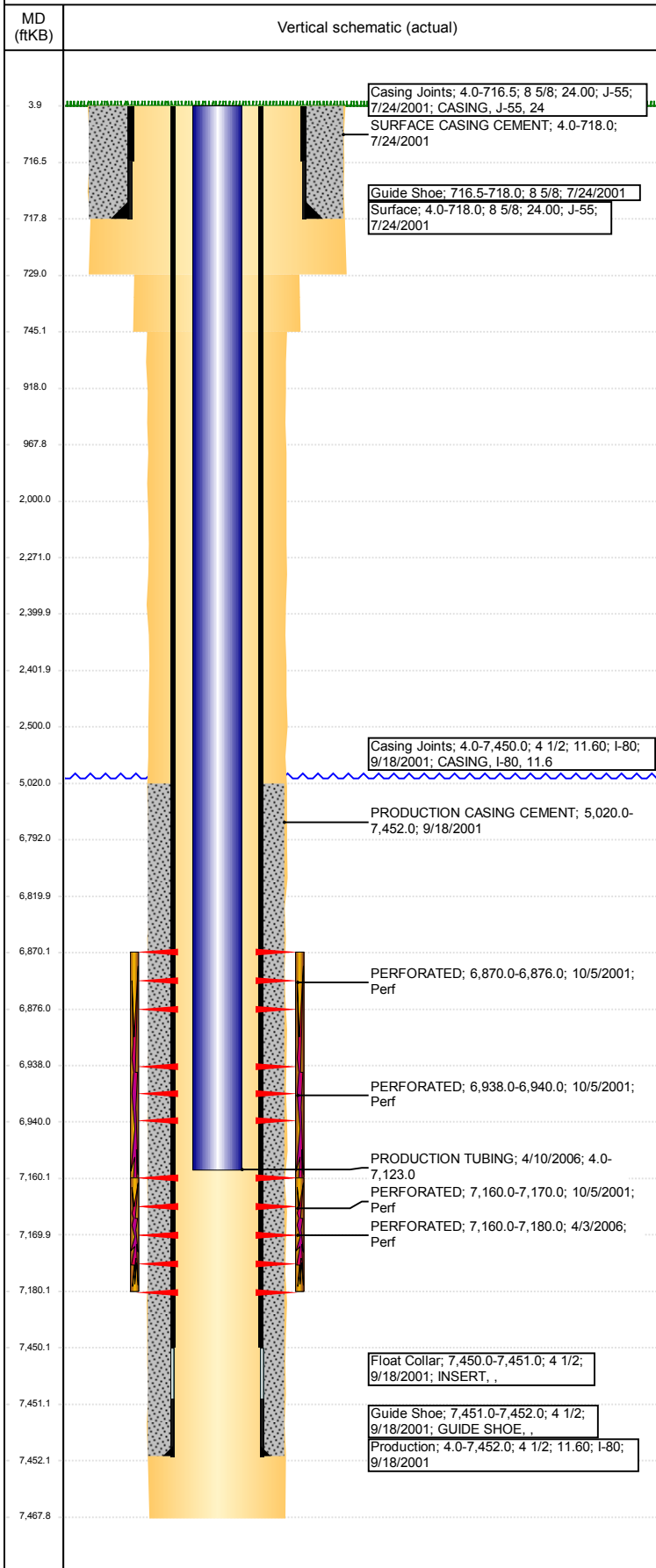


**Well Name: SHARKEY 11-26**

VERTICAL - ORIGINAL HOLE, 12/28/2017 7:39:05 AM



## Well Header

API 05-123-20427	Business Unit DJ BASIN	District 15	Well Config VERTICAL
Original KB Elevation (ft) 4,742	KB - GL / MSL (ftKB) 4.00	Spud Date 7/24/2001	P & A Date

Comment  
LIMITED ENTRY. USED 7468' DEPTH ON WELL SUMMARY REPORT.  
UTILIZED KB AND GL OFF LOGS = 4KB.

Directions To Well

## Congressional Location

Quarter 3 NE	Quarter 4 SW	Section 26	Township 4	Twntshp N/S Dir N	Range 67	Range E/W Dir W
-----------------	-----------------	---------------	---------------	----------------------	-------------	--------------------

## Bottom Hole Location

North-South Distance (ft)	From N or S Line	East-West Distance (ft)	From E or W Line
---------------------------	------------------	-------------------------	------------------

## Plug Back Total Depths

Date	Depth (ftKB)	Method	Com
9/18/2001	7,420.0	CASING TALLY	TOP OF FLOAT COLLAR
10/4/2001	7,416.0	CASED HOLE LOG	DEPTH LOGGER ON CBL
3/31/2006		TAG	TAG FILL AND NO DEPTH GIVEN

## Wellbore Sections

Section Des	Size (in)	Act Top, MD (ftKB)	Act Btm, MD (ftKB)
SURFACE	12 1/4	4	729
INTERMEDIATE	7 7/8	729	745
PRODUCTION	6 1/2	745	7,468

## Zone Statuses

Zone Name	Status Date	Status	Fluid Type	Job	Prod Method
NIORARA	10/24/2001	PR		DRILLING/CO...	Flowing
CODELL	10/24/2001	PR		DRILLING/CO...	Flowing
CODELL	4/13/2006	PR		RE-FRAC, 4/6/...	Flowing

## Casing Strings

### Surface, 718.0ftKB

Casing Description	Run Date	OD (in)	Wt/Len (l...)	Grade	Top, MD (ft...)	MD (ftKB)
Surface	7/24/2001	8 5/8	24.00	J-55	4.0	718.0

### Production, 7,452.0ftKB

Casing Description	Run Date	OD (in)	Wt/Len (l...)	Grade	Top, MD (ft...)	MD (ftKB)
Production	9/18/2001	4 1/2	11.60	I-80	4.0	7,452.0

## Cement

Description	Top Depth (ftKB)	Bottom Depth (ftKB)
SURFACE CASING CEMENT	4.0	718.0
PRODUCTION CASING CEMENT	5,020.0	7,452.0
	4.0	729.0
	729.0	918.0
Shoe Plug	918.0	968.0
PA Plug - TOP CICR	2,271.0	2,400.0
PA Plug - BELOW CICR	2,402.0	2,500.0
PA Plug	2,000.0	2,500.0

## Tubing Strings

Tubing Description	Run Date	String...	ID (in)	Wt (lb/ft)	Grade	Len (ft)	Set De...
PRODUCTION TUBING	4/10/2006	2 3/8	2.00	4.70	J-55	7,119.00	

## Tubing Components

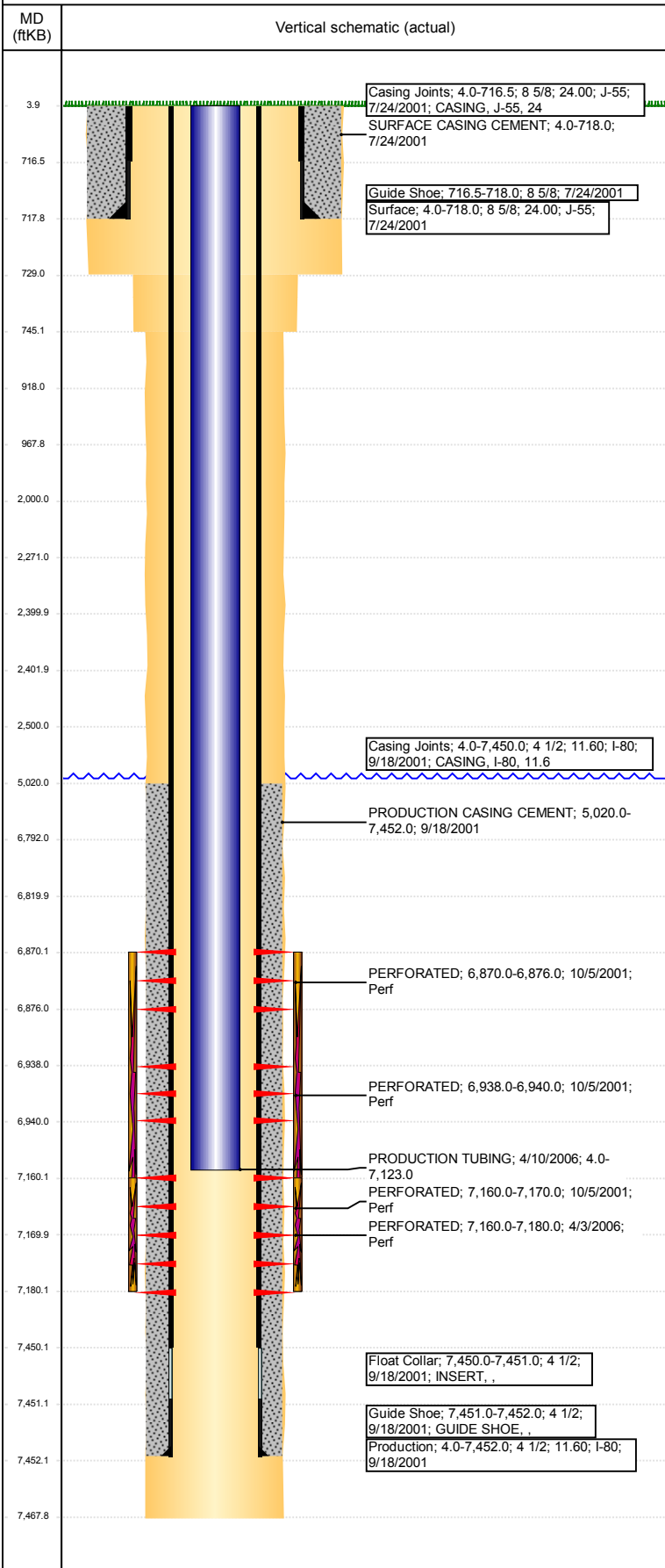
Item Des	OD (in)	Wt (lb/ft)	Grade	Jts	Len (ft)	Btm (ftKB)	Btm (TVD) (ftKB)
Tubing	2 3/8	4.70	J-55	227	7,117.00	7,121.0	
Pump Seating Nipple	2 3/8			1	1.00	7,122.0	
Notched collar	2 3/8			1	1.00	7,123.0	

## Other In Hole

Run Date	Des	OD (in)	Top (ftKB)	Btm (ftKB)
12/13/2017	Cast Iron Bridge Plug w/ 2 SX Cement	4	6,792.0	6,820.0
12/13/2017	Cement Retainer	4	2,400.0	2,402.0

**Well Name: SHARKEY 11-26**

VERTICAL - ORIGINAL HOLE, 12/28/2017 7:39:06 AM



Logs			
Date	Type	Top, MD (ftKB)	Btm, MD (ftKB)
9/26/2001	COMPENSATED NEUTRON	500.0	7,412.0
10/4/2001	CEMENT BOND	4,850.0	7,410.0

Perforation Data					
Linked Zone	Bnch/St g	Sum of Entered Shot Total	Top (ftKB)	Btm (ftKB)	Date
CODELL, ORIGINAL HOLE		0	2,500.00	2,500.00	12/13/2017
NIOBRARA, ORIGINAL HOLE		6	6,870.00	6,876.00	10/5/2001
NIOBRARA, ORIGINAL HOLE		2	6,938.00	6,940.00	10/5/2001
CODELL, ORIGINAL HOLE		10	7,160.00	7,170.00	10/5/2001
CODELL, ORIGINAL HOLE		60	7,160.00	7,180.00	4/3/2006
<b>Total (Sum)</b>		<b>78</b>			

Stimulation Intervals		
Start Date	Primary Job Type	
10/9/2001	DRILLING/COMPLETION - ORIGINAL	
Technical Result	Tech Result Details	Tech Result Note
Comment		
CODELL/NIOBRARA LIMITED ENTRY		
Start Date	Primary Job Type	
4/7/2006	RE-FRAC	
Technical Result	Tech Result Details	Tech Result Note
Comment		
CODELL REFRAC		