



Project: Weld County, CO NAD 83
Site: Anschutz Equus Farms 3-62-4_5 CE2 Pad [GOOD]
Well: Anschutz Equus Farm 3-62-4-2532CN
Wellbore: OH
Design: OH

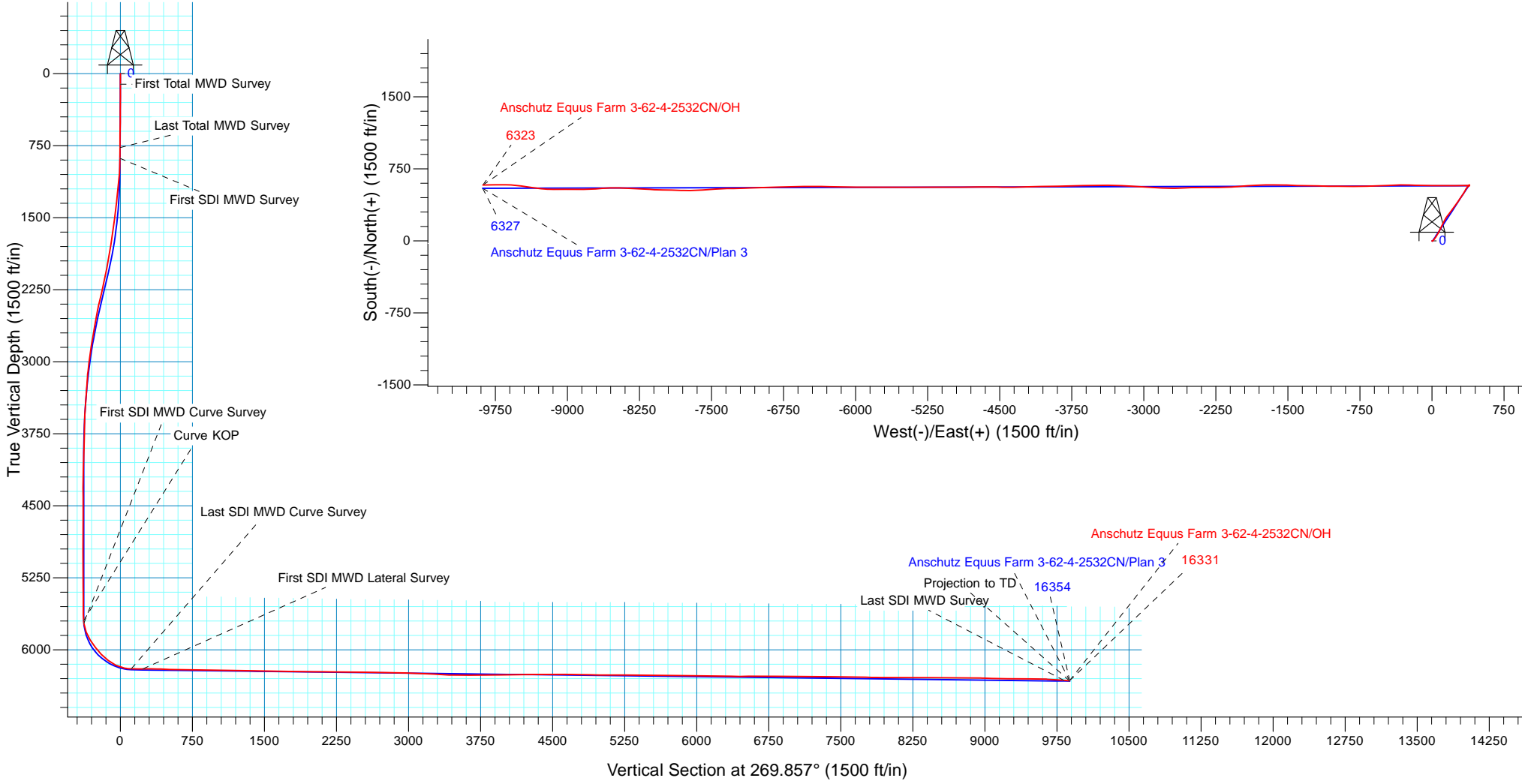


WELL DETAILS: Anschutz Equus Farm 3-62-4-2532CN			
GL 4612.6' & KB 20; @ 4632.60ft (Savanna 802)	4612.60		
Northing	Easting	Latitude	Longitude
1337842.62	3329197.84	40° 15' 17.161 N	104° 19' 13.789 W

Design: OH (Anschutz Equus Farm 3-62-4-2532CN/OH)	
Created By: Seth Burstad	Date: 11-16-2017

PROJECT DETAILS: Weld County, CO NAD 83	
Geodetic System:	US State Plane 1983
Datum:	North American Datum 1983
Ellipsoid:	GRS 1980
Zone:	Colorado Northern Zone
System Datum:	Mean Sea Level
Local North:	True

ANNOTATIONS							
TVD	MD	Inc	Azi	+N/-S	+E/-W	VSect	Departure
112.00	112.00	0.26	126.980	-0.15	0.20	-0.20	0.25
770.98	771.00	0.48	38.210	-2.93	3.68	-3.68	5.33
881.98	882.00	0.27	57.770	-2.42	4.19	-4.19	6.06
5695.07	5792.00	4.54	270.203	576.66	381.22	-382.66	729.48
5724.92	5822.00	6.59	271.610	576.71	378.31	-379.75	731.30
6198.36	6555.00	89.53	272.550	577.61	-115.00	113.56	1224.86
6199.48	6675.00	89.40	270.620	580.93	-234.94	233.49	1344.85
6318.87	16273.00	86.08	269.230	582.12	-9823.64	9822.16	10940.91
6322.83	16331.00	86.08	269.230	581.34	-9881.50	9880.02	10998.78
							Projection to TD





Bill Barrett Corporation

Bill Barrett Corp.

Weld County, CO NAD 83

Anschutz Equus Farms 3-62-4_5 CE2 Pad [GOOD]

Anschutz Equus Farm 3-62-4-2532CN

OH

Design: OH

Standard Survey Report

16 November, 2017



Scientific Drilling

www.scientificdrilling.com



Company:	Bill Barrett Corp.	Local Co-ordinate Reference:	Well Anschutz Equus Farm 3-62-4-2532CN
Project:	Weld County, CO NAD 83	TVD Reference:	GL 4612.6' & KB 20; @ 4632.60ft (Savanna 802)
Site:	Anschutz Equus Farms 3-62-4_5 CE2 Pad [GOOD]	MD Reference:	GL 4612.6' & KB 20; @ 4632.60ft (Savanna 802)
Well:	Anschutz Equus Farm 3-62-4-2532CN	North Reference:	True
Wellbore:	OH	Survey Calculation Method:	Minimum Curvature
Design:	OH	Database:	Casper District

Project	Weld County, CO NAD 83		
Map System:	US State Plane 1983	System Datum:	Mean Sea Level
Geo Datum:	North American Datum 1983		
Map Zone:	Colorado Northern Zone		

Site	Anschutz Equus Farms 3-62-4_5 CE2 Pad [GOOD], Site Center : Anschutz Equus Farm 3-62-4-2532CN				
Site Position:		Northing:	1,337,842.68 usft	Latitude:	40° 15' 17.161 N
From:	Lat/Long	Easting:	3,329,197.84 usft	Longitude:	104° 19' 13.789 W
Position Uncertainty:	0.00 ft	Slot Radius:	13.200 in	Grid Convergence:	0.76 °

Well	Anschutz Equus Farm 3-62-4-2532CN, 2565' FSL 325' FEL Sec 4 T3N R62W					
Well Position	+N/-S	0.00 ft	Northing:	1,337,842.62 usft	Latitude:	40° 15' 17.161 N
	+E/-W	0.00 ft	Easting:	3,329,197.84 usft	Longitude:	104° 19' 13.789 W
Position Uncertainty		0.00 ft	Wellhead Elevation:	0.00 ft	Ground Level:	4,612.60 ft

Wellbore	OH				
Magnetics	Model Name	Sample Date	Declination (°)	Dip Angle (°)	Field Strength (nT)
	HDGM	11/2/2017	8.25	66.92	52,338

Design	OH				
Audit Notes:					
Version:	1.0	Phase:	ACTUAL	Tie On Depth:	0.00
Vertical Section:	Depth From (TVD) (ft)	+N/-S (ft)	+E/-W (ft)	Direction (°)	
	0.00	0.00	0.00	269.857	

Survey Program	Date	11/16/2017			
From (ft)	To (ft)	Survey (Wellbore)	Tool Name	Description	
112.00	771.00	Survey #1 - Surface (OH)	OWSG MWD	OWSG MWD - Standard	
882.00	6,555.00	Survey #2 - Intermediate (OH)	OWSG MWD	OWSG MWD - Standard	
6,675.00	16,331.00	Survey #3 - Lateral (OH)	OWSG MWD	OWSG MWD - Standard	

Survey									
Measured Depth (ft)	Inclination (°)	Azimuth (°)	Vertical Depth (ft)	+N/-S (ft)	+E/-W (ft)	Vertical Section (ft)	Dogleg Rate (°/100ft)	Build Rate (°/100ft)	Turn Rate (°/100ft)
0.00	0.00	0.000	0.00	0.00	0.00	0.00	0.00	0.00	0.00
112.00	0.26	126.980	112.00	-0.15	0.20	-0.20	0.23	0.23	0.00
First Total MWD Survey									
244.00	0.44	125.660	244.00	-0.63	0.85	-0.85	0.14	0.14	-1.00
377.00	0.26	131.460	376.99	-1.13	1.50	-1.49	0.14	-0.14	4.36
508.00	0.66	143.770	507.99	-1.93	2.16	-2.16	0.31	0.31	9.40
639.00	0.48	138.410	638.98	-2.95	2.97	-2.97	0.14	-0.14	-4.09
771.00	0.48	38.210	770.98	-2.93	3.68	-3.68	0.56	0.00	-75.91

Company:	Bill Barrett Corp.	Local Co-ordinate Reference:	Well Anschutz Equus Farm 3-62-4-2532CN
Project:	Weld County, CO NAD 83	TVD Reference:	GL 4612.6' & KB 20; @ 4632.60ft (Savanna 802)
Site:	Anschutz Equus Farms 3-62-4_5 CE2 Pad [GOOD]	MD Reference:	GL 4612.6' & KB 20; @ 4632.60ft (Savanna 802)
Well:	Anschutz Equus Farm 3-62-4-2532CN	North Reference:	True
Wellbore:	OH	Survey Calculation Method:	Minimum Curvature
Design:	OH	Database:	Casper District

Survey									
Measured Depth (ft)	Inclination (°)	Azimuth (°)	Vertical Depth (ft)	+N/-S (ft)	+E/-W (ft)	Vertical Section (ft)	Dogleg Rate (°/100ft)	Build Rate (°/100ft)	Turn Rate (°/100ft)
Last Total MWD Survey									
882.00	0.27	57.770	881.98	-2.42	4.19	-4.19	0.22	-0.19	17.62
First SDI MWD Survey									
974.00	3.78	42.420	973.91	-0.07	6.42	-6.42	3.83	3.82	-16.68
1,065.00	6.49	48.320	1,064.53	5.57	12.29	-12.30	3.03	2.98	6.48
1,157.00	8.65	40.050	1,155.73	14.32	20.62	-20.66	2.62	2.35	-8.99
1,248.00	10.57	34.880	1,245.45	26.41	29.80	-29.87	2.31	2.11	-5.68
1,338.00	12.03	30.810	1,333.70	41.24	39.33	-39.43	1.85	1.62	-4.52
1,430.00	14.05	31.890	1,423.33	58.95	50.14	-50.28	2.21	2.20	1.17
1,521.00	14.57	31.360	1,511.50	78.11	61.93	-62.12	0.59	0.57	-0.58
1,613.00	15.11	23.830	1,600.44	98.96	72.80	-73.04	2.18	0.59	-8.18
1,704.00	17.19	27.000	1,687.85	121.79	83.70	-84.00	2.48	2.29	3.48
1,795.00	19.32	28.770	1,774.26	146.97	97.05	-97.41	2.42	2.34	1.95
1,887.00	20.85	26.340	1,860.67	174.99	111.64	-112.07	1.89	1.66	-2.64
1,979.00	20.65	25.220	1,946.70	204.34	125.81	-126.32	0.48	-0.22	-1.22
2,070.00	20.14	31.390	2,032.01	232.23	140.81	-141.39	2.43	-0.56	6.78
2,161.00	19.95	37.030	2,117.50	258.00	158.32	-158.97	2.13	-0.21	6.20
2,253.00	21.02	36.670	2,203.68	283.76	177.63	-178.34	1.17	1.16	-0.39
2,344.00	20.90	36.650	2,288.66	309.88	197.07	-197.84	0.13	-0.13	-0.02
2,438.00	20.97	37.540	2,376.46	336.67	217.32	-218.16	0.35	0.07	0.95
2,532.00	17.60	35.770	2,465.17	361.54	235.89	-236.79	3.64	-3.59	-1.88
2,625.00	17.40	36.100	2,553.87	384.18	252.30	-253.25	0.24	-0.22	0.35
2,720.00	17.18	35.350	2,644.57	407.11	268.78	-269.80	0.33	-0.23	-0.79
2,814.00	17.21	33.580	2,734.37	430.01	284.51	-285.58	0.56	0.03	-1.88
2,908.00	16.56	32.760	2,824.32	452.86	299.45	-300.58	0.74	-0.69	-0.87
3,002.00	13.38	34.210	2,915.12	473.13	312.81	-313.99	3.41	-3.38	1.54
3,095.00	12.96	32.880	3,005.67	490.79	324.53	-325.75	0.56	-0.45	-1.43
3,190.00	11.57	33.050	3,098.50	507.72	335.51	-336.77	1.46	-1.46	0.18
3,284.00	9.84	23.770	3,190.87	522.97	343.89	-345.19	2.59	-1.84	-9.87
3,378.00	8.02	26.520	3,283.73	536.19	350.05	-351.39	1.99	-1.94	2.93
3,472.00	6.80	38.200	3,376.94	546.43	356.42	-357.78	2.06	-1.30	12.43
3,566.00	6.68	37.700	3,470.29	555.13	363.21	-364.59	0.14	-0.13	-0.53
3,660.00	5.51	30.220	3,563.76	563.36	368.82	-370.23	1.50	-1.24	-7.96
3,754.00	2.43	15.350	3,657.53	569.18	371.62	-373.04	3.43	-3.28	-15.82
3,848.00	1.49	93.740	3,751.49	571.02	373.37	-374.79	2.75	-1.00	83.39
3,942.00	1.63	90.140	3,845.45	570.94	375.92	-377.35	0.18	0.15	-3.83
4,036.00	1.51	82.820	3,939.42	571.09	378.49	-379.91	0.25	-0.13	-7.79
4,130.00	1.68	86.890	4,033.38	571.32	381.10	-382.52	0.22	0.18	4.33
4,224.00	1.88	85.010	4,127.33	571.53	384.01	-385.43	0.22	0.21	-2.00
4,319.00	1.14	50.680	4,222.30	572.27	386.29	-387.72	1.20	-0.78	-36.14
4,412.00	1.01	335.510	4,315.29	573.60	386.67	-388.10	1.41	-0.14	-80.83
4,506.00	0.97	1.670	4,409.28	575.15	386.35	-387.78	0.48	-0.04	27.83
4,600.00	1.28	353.280	4,503.26	576.99	386.25	-387.69	0.37	0.33	-8.93

Company:	Bill Barrett Corp.	Local Co-ordinate Reference:	Well Anschutz Equus Farm 3-62-4-2532CN
Project:	Weld County, CO NAD 83	TVD Reference:	GL 4612.6' & KB 20; @ 4632.60ft (Savanna 802)
Site:	Anschutz Equus Farms 3-62-4_5 CE2 Pad [GOOD]	MD Reference:	GL 4612.6' & KB 20; @ 4632.60ft (Savanna 802)
Well:	Anschutz Equus Farm 3-62-4-2532CN	North Reference:	True
Wellbore:	OH	Survey Calculation Method:	Minimum Curvature
Design:	OH	Database:	Casper District

Survey									
Measured Depth (ft)	Inclination (°)	Azimuth (°)	Vertical Depth (ft)	+N/-S (ft)	+E/-W (ft)	Vertical Section (ft)	Dogleg Rate (°/100ft)	Build Rate (°/100ft)	Turn Rate (°/100ft)
4,694.00	0.96	18.720	4,597.24	578.77	386.38	-387.82	0.62	-0.34	27.06
4,788.00	1.12	24.030	4,691.23	580.36	387.00	-388.45	0.20	0.17	5.65
4,882.00	1.02	24.380	4,785.21	581.96	387.72	-389.17	0.11	-0.11	0.37
4,976.00	0.59	346.720	4,879.20	583.19	387.96	-389.41	0.70	-0.46	-40.06
5,070.00	0.21	344.990	4,973.20	583.83	387.80	-389.26	0.40	-0.40	-1.84
5,165.00	1.23	200.960	5,068.19	583.05	387.39	-388.85	1.48	1.07	-151.61
5,259.00	1.06	202.410	5,162.17	581.30	386.70	-388.15	0.18	-0.18	1.54
5,353.00	0.86	211.430	5,256.16	579.89	386.00	-387.45	0.27	-0.21	9.60
5,446.00	0.63	217.130	5,349.15	578.89	385.33	-386.77	0.26	-0.25	6.13
5,540.00	0.86	202.940	5,443.14	577.83	384.74	-386.18	0.31	0.24	-15.10
5,634.00	0.30	263.060	5,537.14	577.15	384.22	-385.66	0.80	-0.60	63.96
5,728.00	0.38	205.290	5,631.14	576.84	383.84	-385.28	0.36	0.09	-61.46
5,792.00	4.54	270.203	5,695.07	576.66	381.22	-382.66	6.86	6.50	101.43
Curve KOP									
5,822.00	6.59	271.610	5,724.92	576.71	378.31	-379.75	6.86	6.84	4.69
First SDI MWD Curve Survey									
5,916.00	22.63	267.940	5,815.59	576.21	354.69	-356.13	17.08	17.06	-3.90
6,010.00	32.01	266.190	5,899.01	573.90	311.67	-313.10	10.01	9.98	-1.86
6,104.00	37.01	272.410	5,976.47	573.43	258.49	-259.92	6.50	5.32	6.62
6,199.00	43.97	271.550	6,048.68	575.53	196.88	-198.32	7.35	7.33	-0.91
6,293.00	52.44	268.480	6,111.28	575.42	126.88	-128.32	9.33	9.01	-3.27
6,387.00	63.62	270.260	6,160.97	574.62	47.27	-48.71	12.00	11.89	1.89
6,481.00	79.02	270.790	6,190.99	575.45	-41.50	40.07	16.39	16.38	0.56
6,555.00	89.53	272.550	6,198.36	577.61	-115.00	113.56	14.40	14.20	2.38
Last SDI MWD Curve Survey									
6,675.00	89.40	270.620	6,199.48	580.93	-234.94	233.49	1.61	-0.11	-1.61
First SDI MWD Lateral Survey									
6,769.00	89.87	270.180	6,200.08	581.58	-328.94	327.48	0.68	0.50	-0.47
6,862.00	87.85	266.720	6,201.93	579.07	-421.86	420.42	4.31	-2.17	-3.72
6,956.00	88.32	267.130	6,205.07	574.03	-515.68	514.24	0.66	0.50	0.44
7,049.00	88.72	268.750	6,207.47	570.69	-608.58	607.16	1.79	0.43	1.74
7,143.00	88.89	269.300	6,209.43	569.09	-702.55	701.12	0.61	0.18	0.59
7,237.00	89.13	269.230	6,211.06	567.88	-796.53	795.11	0.27	0.26	-0.07
7,330.00	90.07	270.230	6,211.71	567.44	-889.52	888.10	1.48	1.01	1.08
7,424.00	89.46	270.600	6,212.09	568.12	-983.52	982.10	0.76	-0.65	0.39
7,519.00	89.29	270.850	6,213.13	569.33	-1,078.50	1,077.08	0.32	-0.18	0.26
7,612.00	88.66	271.390	6,214.79	571.14	-1,171.47	1,170.04	0.89	-0.68	0.58
7,706.00	88.32	270.610	6,217.27	572.78	-1,265.42	1,263.99	0.90	-0.36	-0.83
7,800.00	89.33	271.370	6,219.20	574.41	-1,359.39	1,357.95	1.34	1.07	0.81
7,894.00	89.09	272.760	6,220.49	577.79	-1,453.31	1,451.87	1.50	-0.26	1.48
7,987.00	88.59	270.600	6,222.37	580.52	-1,546.25	1,544.79	2.38	-0.54	-2.32
8,081.00	89.36	271.200	6,224.06	582.00	-1,640.22	1,638.76	1.04	0.82	0.64
8,174.00	89.43	269.090	6,225.04	582.23	-1,733.21	1,731.75	2.27	0.08	-2.27

Company:	Bill Barrett Corp.	Local Co-ordinate Reference:	Well Anschutz Equus Farm 3-62-4-2532CN
Project:	Weld County, CO NAD 83	TVD Reference:	GL 4612.6' & KB 20; @ 4632.60ft (Savanna 802)
Site:	Anschutz Equus Farms 3-62-4_5 CE2 Pad [GOOD]	MD Reference:	GL 4612.6' & KB 20; @ 4632.60ft (Savanna 802)
Well:	Anschutz Equus Farm 3-62-4-2532CN	North Reference:	True
Wellbore:	OH	Survey Calculation Method:	Minimum Curvature
Design:	OH	Database:	Casper District

Survey									
Measured Depth (ft)	Inclination (°)	Azimuth (°)	Vertical Depth (ft)	+N/-S (ft)	+E/-W (ft)	Vertical Section (ft)	Dogleg Rate (°/100ft)	Build Rate (°/100ft)	Turn Rate (°/100ft)
8,268.00	89.19	267.300	6,226.17	579.27	-1,827.15	1,825.70	1.92	-0.26	-1.90
8,363.00	88.82	265.160	6,227.82	573.03	-1,921.93	1,920.49	2.29	-0.39	-2.25
8,456.00	89.36	265.590	6,229.30	565.53	-2,014.61	2,013.19	0.74	0.58	0.46
8,551.00	89.66	267.540	6,230.11	559.84	-2,109.43	2,108.03	2.08	0.32	2.05
8,645.00	89.56	269.280	6,230.75	557.23	-2,203.39	2,201.99	1.85	-0.11	1.85
8,738.00	89.33	270.420	6,231.65	556.99	-2,296.38	2,294.99	1.25	-0.25	1.23
8,831.00	89.30	269.440	6,232.76	556.87	-2,389.38	2,387.98	1.05	-0.03	-1.05
8,926.00	89.53	267.750	6,233.73	554.54	-2,484.34	2,482.95	1.80	0.24	-1.78
9,020.00	89.43	267.420	6,234.59	550.58	-2,578.25	2,576.87	0.37	-0.11	-0.35
9,113.00	89.63	269.700	6,235.35	548.25	-2,671.21	2,669.84	2.46	0.22	2.45
9,207.00	88.89	271.670	6,236.56	549.37	-2,765.19	2,763.81	2.24	-0.79	2.10
9,302.00	88.69	272.590	6,238.57	552.90	-2,860.11	2,858.72	0.99	-0.21	0.97
9,396.00	88.32	273.430	6,241.02	557.83	-2,953.94	2,952.54	0.98	-0.39	0.89
9,490.00	87.89	274.150	6,244.13	564.04	-3,047.69	3,046.27	0.89	-0.46	0.77
9,583.00	87.69	273.060	6,247.72	569.89	-3,140.43	3,139.00	1.19	-0.22	-1.17
9,678.00	86.78	272.880	6,252.30	574.80	-3,235.19	3,233.75	0.98	-0.96	-0.19
9,772.00	86.68	271.250	6,257.66	578.18	-3,328.98	3,327.52	1.73	-0.11	-1.73
9,866.00	87.78	269.630	6,262.20	578.90	-3,422.86	3,421.40	2.08	1.17	-1.72
9,960.00	90.60	268.350	6,263.53	577.25	-3,516.82	3,515.37	3.29	3.00	-1.36
10,054.00	90.44	268.630	6,262.68	574.77	-3,610.79	3,609.34	0.34	-0.17	0.30
10,148.00	90.07	268.980	6,262.26	572.81	-3,704.76	3,703.32	0.54	-0.39	0.37
10,242.00	89.66	268.940	6,262.48	571.10	-3,798.75	3,797.31	0.44	-0.44	-0.04
10,336.00	89.16	268.870	6,263.45	569.31	-3,892.73	3,891.29	0.54	-0.53	-0.07
10,427.00	90.97	269.090	6,263.35	567.69	-3,983.71	3,982.28	2.00	1.99	0.24
10,518.00	91.04	269.030	6,261.75	566.20	-4,074.68	4,073.26	0.10	0.08	-0.07
10,610.00	90.94	268.070	6,260.16	563.87	-4,166.64	4,165.22	1.05	-0.11	-1.04
10,701.00	91.48	267.910	6,258.24	560.68	-4,257.56	4,256.15	0.62	0.59	-0.18
10,793.00	90.20	268.360	6,256.89	557.68	-4,349.50	4,348.09	1.47	-1.39	0.49
10,884.00	91.01	272.180	6,255.93	558.11	-4,440.48	4,439.07	4.29	0.89	4.20
10,975.00	89.56	270.860	6,255.48	560.53	-4,531.44	4,530.03	2.15	-1.59	-1.45
11,067.00	89.19	270.720	6,256.48	561.79	-4,623.42	4,622.01	0.43	-0.40	-0.15
11,158.00	89.36	269.460	6,257.63	561.94	-4,714.41	4,713.00	1.40	0.19	-1.38
11,249.00	88.36	267.860	6,259.44	559.81	-4,805.37	4,803.96	2.07	-1.10	-1.76
11,341.00	89.16	269.780	6,261.43	557.92	-4,897.32	4,895.91	2.26	0.87	2.09
11,432.00	89.46	270.320	6,262.53	557.99	-4,988.31	4,986.91	0.68	0.33	0.59
11,523.00	89.83	270.030	6,263.09	558.27	-5,079.31	5,077.90	0.52	0.41	-0.32
11,614.00	90.47	269.970	6,262.86	558.27	-5,170.31	5,168.90	0.71	0.70	-0.07
11,705.00	89.16	269.850	6,263.15	558.13	-5,261.31	5,259.90	1.45	-1.44	-0.13
11,797.00	89.23	269.710	6,264.44	557.78	-5,353.30	5,351.89	0.17	0.08	-0.15
11,888.00	90.44	270.020	6,264.70	557.56	-5,444.30	5,442.89	1.37	1.33	0.34
11,980.00	88.76	269.930	6,265.35	557.52	-5,536.29	5,534.88	1.83	-1.83	-0.10
12,071.00	88.89	270.000	6,267.21	557.47	-5,627.27	5,625.86	0.16	0.14	0.08
12,163.00	88.69	269.890	6,269.16	557.38	-5,719.25	5,717.84	0.25	-0.22	-0.12

Company:	Bill Barrett Corp.	Local Co-ordinate Reference:	Well Anschutz Equus Farm 3-62-4-2532CN
Project:	Weld County, CO NAD 83	TVD Reference:	GL 4612.6' & KB 20; @ 4632.60ft (Savanna 802)
Site:	Anschutz Equus Farms 3-62-4_5 CE2 Pad [GOOD]	MD Reference:	GL 4612.6' & KB 20; @ 4632.60ft (Savanna 802)
Well:	Anschutz Equus Farm 3-62-4-2532CN	North Reference:	True
Wellbore:	OH	Survey Calculation Method:	Minimum Curvature
Design:	OH	Database:	Casper District

Survey									
Measured Depth (ft)	Inclination (°)	Azimuth (°)	Vertical Depth (ft)	+N/-S (ft)	+E/-W (ft)	Vertical Section (ft)	Dogleg Rate (°/100ft)	Build Rate (°/100ft)	Turn Rate (°/100ft)
12,254.00	89.09	269.680	6,270.92	557.04	-5,810.23	5,808.82	0.50	0.44	-0.23
12,345.00	90.87	272.320	6,270.95	558.62	-5,901.21	5,899.79	3.50	1.96	2.90
12,437.00	89.73	270.480	6,270.47	560.87	-5,993.17	5,991.75	2.35	-1.24	-2.00
12,528.00	88.59	270.710	6,271.80	561.82	-6,084.16	6,082.74	1.28	-1.25	0.25
12,620.00	89.46	270.970	6,273.37	563.17	-6,176.13	6,174.71	0.99	0.95	0.28
12,711.00	88.69	270.600	6,274.84	564.41	-6,267.11	6,265.68	0.94	-0.85	-0.41
12,801.00	89.26	270.520	6,276.45	565.29	-6,357.09	6,355.66	0.64	0.63	-0.09
12,894.00	89.97	270.290	6,277.07	565.95	-6,450.09	6,448.65	0.80	0.76	-0.25
12,985.00	90.91	269.760	6,276.37	565.99	-6,541.08	6,539.65	1.19	1.03	-0.58
13,077.00	89.83	268.720	6,275.78	564.77	-6,633.07	6,631.64	1.63	-1.17	-1.13
13,168.00	89.83	267.740	6,276.05	561.96	-6,724.03	6,722.60	1.08	0.00	-1.08
13,260.00	89.77	268.980	6,276.37	559.32	-6,815.99	6,814.57	1.35	-0.07	1.35
13,351.00	89.36	268.080	6,277.06	556.99	-6,906.95	6,905.54	1.09	-0.45	-0.99
13,443.00	90.17	267.680	6,277.44	553.59	-6,998.89	6,997.48	0.98	0.88	-0.43
13,534.00	89.16	267.960	6,277.97	550.13	-7,089.82	7,088.42	1.15	-1.11	0.31
13,625.00	89.60	268.570	6,278.96	547.37	-7,180.77	7,179.38	0.83	0.48	0.67
13,717.00	89.09	268.590	6,280.01	545.09	-7,272.74	7,271.35	0.55	-0.55	0.02
13,808.00	89.56	269.430	6,281.08	543.52	-7,363.72	7,362.34	1.06	0.52	0.92
13,900.00	89.10	266.040	6,282.15	539.88	-7,455.62	7,454.25	3.72	-0.50	-3.68
13,992.00	89.43	264.820	6,283.34	532.55	-7,547.32	7,545.97	1.37	0.36	-1.33
14,084.00	89.76	268.110	6,283.99	526.88	-7,639.13	7,637.79	3.59	0.36	3.58
14,175.00	88.99	269.490	6,284.98	524.98	-7,730.10	7,728.77	1.74	-0.85	1.52
14,267.00	87.82	271.380	6,287.54	525.67	-7,822.06	7,820.72	2.42	-1.27	2.05
14,358.00	89.19	271.770	6,289.91	528.18	-7,912.99	7,911.65	1.57	1.51	0.43
14,450.00	90.23	270.920	6,290.38	530.33	-8,004.96	8,003.61	1.46	1.13	-0.92
14,542.00	89.53	272.410	6,290.57	533.01	-8,096.92	8,095.57	1.79	-0.76	1.62
14,634.00	90.03	273.470	6,290.92	537.73	-8,188.80	8,187.43	1.27	0.54	1.15
14,725.00	90.27	272.650	6,290.69	542.58	-8,279.67	8,278.29	0.94	0.26	-0.90
14,817.00	90.74	272.970	6,289.88	547.09	-8,371.55	8,370.16	0.62	0.51	0.35
14,908.00	89.10	271.180	6,290.00	550.39	-8,462.49	8,461.09	2.67	-1.80	-1.97
15,000.00	89.40	269.300	6,291.21	550.77	-8,554.47	8,553.07	2.07	0.33	-2.04
15,091.00	88.59	264.680	6,292.80	546.00	-8,645.31	8,643.92	5.15	-0.89	-5.08
15,183.00	89.33	267.080	6,294.47	539.39	-8,737.05	8,735.67	2.73	0.80	2.61
15,274.00	89.70	268.440	6,295.24	535.83	-8,827.97	8,826.61	1.55	0.41	1.49
15,366.00	90.77	272.050	6,294.87	536.23	-8,919.95	8,918.59	4.09	1.16	3.92
15,457.00	87.72	268.180	6,296.07	536.41	-9,010.92	9,009.55	5.41	-3.35	-4.25
15,549.00	88.22	270.470	6,299.33	535.33	-9,102.85	9,101.48	2.55	0.54	2.49
15,640.00	89.16	271.660	6,301.41	537.02	-9,193.81	9,192.44	1.67	1.03	1.31
15,732.00	89.40	276.860	6,302.56	543.85	-9,285.51	9,284.13	5.66	0.26	5.65
15,823.00	90.44	278.880	6,302.69	556.31	-9,375.65	9,374.23	2.50	1.14	2.22
15,916.00	88.86	276.490	6,303.26	568.74	-9,467.80	9,466.35	3.08	-1.70	-2.57
16,010.00	89.73	275.820	6,304.42	578.82	-9,561.25	9,559.78	1.17	0.93	-0.71

Company:	Bill Barrett Corp.	Local Co-ordinate Reference:	Well Anschutz Equus Farm 3-62-4-2532CN
Project:	Weld County, CO NAD 83	TVD Reference:	GL 4612.6' & KB 20; @ 4632.60ft (Savanna 802)
Site:	Anschutz Equus Farms 3-62-4_5 CE2 Pad [GOOD]	MD Reference:	GL 4612.6' & KB 20; @ 4632.60ft (Savanna 802)
Well:	Anschutz Equus Farm 3-62-4-2532CN	North Reference:	True
Wellbore:	OH	Survey Calculation Method:	Minimum Curvature
Design:	OH	Database:	Casper District

Survey									
Measured Depth (ft)	Inclination (°)	Azimuth (°)	Vertical Depth (ft)	+N/-S (ft)	+E/-W (ft)	Vertical Section (ft)	Dogleg Rate (°/100ft)	Build Rate (°/100ft)	Turn Rate (°/100ft)
16,103.00	86.04	270.140	6,307.85	583.66	-9,654.01	9,652.52	7.28	-3.97	-6.11
16,197.00	86.51	269.230	6,313.96	583.14	-9,747.81	9,746.32	1.09	0.50	-0.97
16,273.00	86.08	269.230	6,318.87	582.12	-9,823.64	9,822.16	0.57	-0.57	0.00
Last SDI MWD Survey									
16,331.00	86.08	269.230	6,322.83	581.34	-9,881.50	9,880.02	0.00	0.00	0.00
Projection to TD									

Design Annotations				
Measured Depth (ft)	Vertical Depth (ft)	Local Coordinates		Comment
		+N/-S (ft)	+E/-W (ft)	
112.00	112.00	-0.15	0.20	First Total MWD Survey
771.00	770.98	-2.93	3.68	Last Total MWD Survey
882.00	881.98	-2.42	4.19	First SDI MWD Survey
5,792.00	5,695.07	576.66	381.22	Curve KOP
5,822.00	5,724.92	576.71	378.31	First SDI MWD Curve Survey
6,555.00	6,198.36	577.61	-115.00	Last SDI MWD Curve Survey
6,675.00	6,199.48	580.93	-234.94	First SDI MWD Lateral Survey
16,273.00	6,318.87	582.12	-9,823.64	Last SDI MWD Survey
16,331.00	6,322.83	581.34	-9,881.50	Projection to TD

Checked By: _____ Approved By: _____ Date: _____