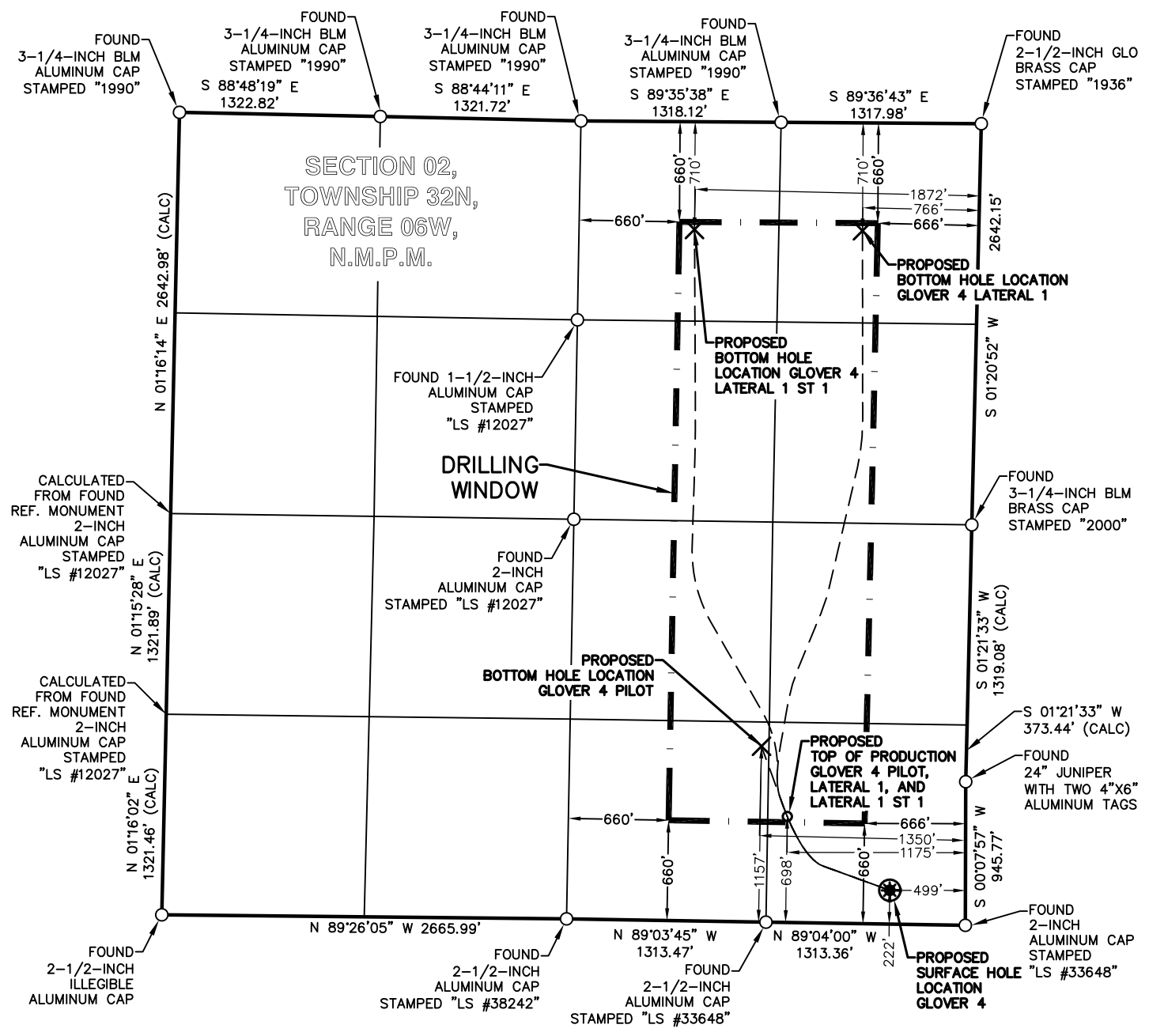
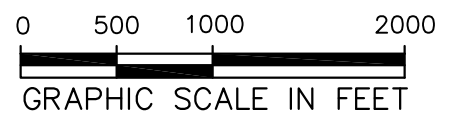


LEGEND
 FOUND MONUMENT ○
 PROPOSED SURFACE HOLE LOCATION ⊕
 PROPOSED BOTTOM HOLE LOCATION ×



SURVEY NOTES

- SEE SHEET 2 OF 2 FOR COORDINATE TABLE, SURVEY NOTES, AND SURVEYOR'S CERTIFICATE.

	BP AMERICA PRODUCTION COMPANY US LOWER 48 ONSHORE
	WELL LOCATION PLAT
GLOVER 4 PART OF SECTION 02, TOWNSHIP 32N, RANGE 06W, N.M.P.M. ARCHULETA COUNTY, COLORADO	

DRAWN BY CFW/RLM	CHECKED BY RLT	SCALE 1"=1000'	DATE 12/13/2017	SHEET 1 OF 2	REVISION
---------------------	-------------------	-------------------	--------------------	-----------------	----------

GLOVER 4 WELLBORE DISTANCES	
SHL TO TOP	879'
TOP TO BHL PILOT	493'
TOP TO BHL LATERAL 1	3,947'
TOP TO BHL LATERAL 1 ST 1	4,006'

GLOVER 4	CSZ NAD'83	NAD'83	TIES	SEC / TWP / RNG	ELEVATION
PROPOSED SURFACE HOLE LOCATION (SHL)	N (Y) = 1,141,916.03' E (X) = 2,427,283.02'	LAT. = 37.03989246°N LON. = 107.46223145°W	FSL = 222' FEL = 499'	SEC 02, TWP 32N, RNG 06W	EXISTING GROUND 6380.97'
PROPOSED TOP OF PRODUCTION (TOP) PILOT, LAT 1, AND LAT 1 ST 1	N (Y) = 1,142,402.10' E (X) = 2,426,608.15'	LAT. = 37.04118814°N LON. = 107.46457801°W	FSL = 698' FEL = 1175'	SEC 02, TWP 32N, RNG 06W	PROPOSED GRADE 6380.31'
PROPOSED BOTTOM HOLE LOCATION (BHL) PILOT	N (Y) = 1,142,864.49' E (X) = 2,426,438.18'	LAT. = 37.04244794°N LON. = 107.46519352°W	FSL = 1157' FEL = 1350'	SEC 02, TWP 32N, RNG 06W	
PROPOSED BOTTOM HOLE LOCATION (BHL) LAT 1	N (Y) = 1,146,259.83' E (X) = 2,427,103.41'	LAT. = 37.05180917°N LON. = 107.46315938°W	FNL = 710' FEL = 766'	SEC 02, TWP 32N, RNG 06W	
PROPOSED BOTTOM HOLE LOCATION (BHL) LAT 1 ST 1	N (Y) = 1,146,267.49' E (X) = 2,425,997.01'	LAT. = 37.05176628°N LON. = 107.46695014°W	FNL = 710' FEL = 1872'	SEC 02, TWP 32N, RNG 06W	


SURVEY NOTES

1. BEARING BASIS FOR THIS SURVEY IS BASED ON THE NORTH AMERICAN DATUM OF 1983, COLORADO STATE PLANE COORDINATE SYSTEM, COLORADO SOUTH, ZONE 0503.
2. ELEVATION BASIS FOR THIS SURVEY IS BASED ON THE NORTH AMERICAN VERTICAL DATUM OF 1988 (GEOID12A).
3. SURVEYED IN THE FIELD ON 12/08/2017.
4. BEARINGS AND DISTANCE SHOWN ARE MEASURED IN THE FIELD UNLESS OTHERWISE NOTED.
5. ALL MEASURED DISTANCES SHOWN ARE GRID USING A COMBINED SCALE FACTOR 0.99973905.
6. GPS INSTRUMENT OPERATOR: BRIAN BONIFACE
7. GPS PDOP VALUE: 1.5

SURVEYOR'S CERTIFICATE

I, ROBERT L. TRUDEAUX, A PROFESSIONAL LAND SURVEYOR IN THE STATE OF COLORADO, DO HEREBY CERTIFY THAT THIS PLAT WAS PREPARED FROM AN ACTUAL SURVEY PERFORMED BY ME OR UNDER MY DIRECT RESPONSIBILITY, SUPERVISION AND CHECKING, AND IS TRUE AND CORRECT TO THE BEST OF MY KNOWLEDGE AND BELIEF BASED ON THE STANDARDS OF CARE OF PROFESSIONAL LAND SURVEYORS PRACTICING IN THE STATE OF COLORADO. THIS DOES NOT REPRESENT A LAND SURVEY PLAT, IMPROVEMENT SURVEY PLAT, OR MONUMENTED LAND SURVEY AS DEFINED BY COLORADO REVISED STATUTES 38-51-102 AND CANNOT BE RELIED UPON TO DETERMINE OWNERSHIP. THIS SURVEY IS NOT A GUARANTY OR WARRANTY, EITHER EXPRESSED OR IMPLIED.



 bp	BP AMERICA PRODUCTION COMPANY US LOWER 48 ONSHORE
	WELL LOCATION PLAT
GLOVER 4 PART OF SECTION 02, TOWNSHIP 32N, RANGE 06W, N.M.P.M. ARCHULETA COUNTY, COLORADO	

DRAWN BY CFW/RLM	CHECKED BY RLT	SCALE N/A	DATE 12/13/2017	SHEET 2 OF 2	REVISION
---------------------	-------------------	--------------	--------------------	-----------------	----------