

**BMC L
Looking North**



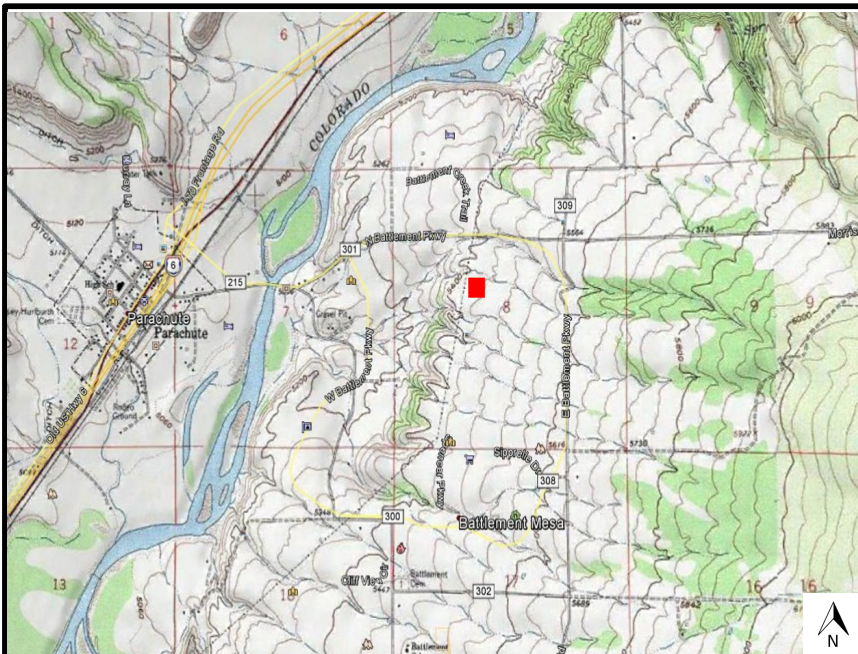
**BMC L
Looking East**



**BMC L
Looking West**



**BMC L
Looking South**



Form 2A - Attachment B
Four Color Photographs
BMC L

39.453394 -108.023925
 Section 8, Township 7 South, Range 95 West

Note: Color photographs show the proposed BMC L pad in the four cardinal directions as noted. Photos were taken from pad center.



HRL COMPLIANCE SOLUTIONS, INC.
 Environmental Consultants

DISCLAIMER : This Geographic Information System (GIS) and its components are designed as a source of reference for answering inquiries, for planning and for modeling.

Author: K.Lambert

Revision: 1

Date: 11/30/2017