

T8N, R59W, 6th P.M.

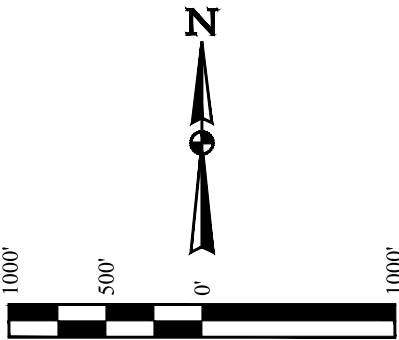
BISON OIL & GAS II

WADE 8-59 20A-9
SW 1/4 SW 1/4, SECTION 20, T8N, R59W, 6th P.M.
WELD COUNTY, COLORADO

BASIS OF BEARINGS

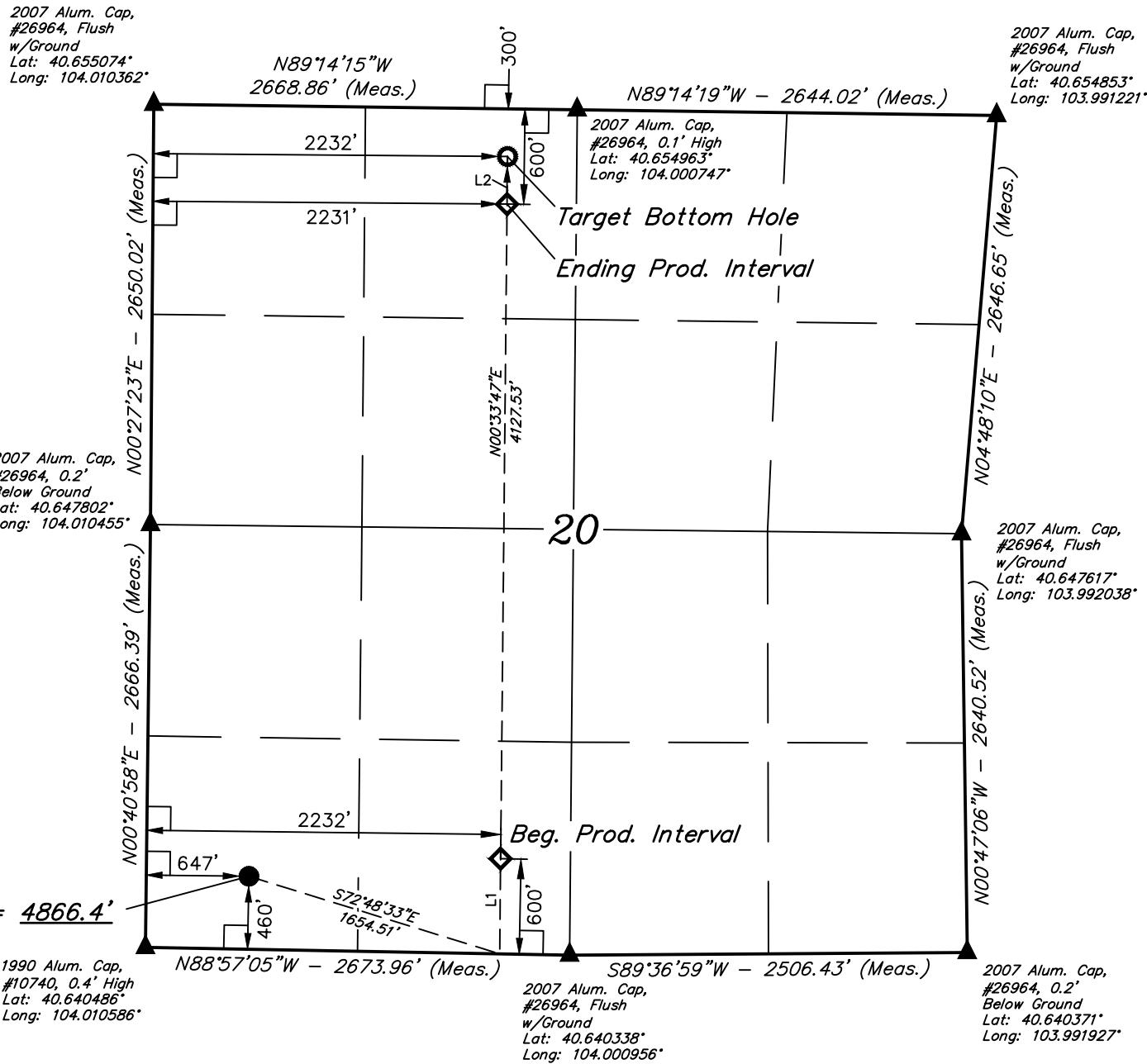
BASIS OF ELEVATION

SPOT ELEVATION LOCATED AT THE NORTHEAST CORNER OF SECTION 2, T9N, R61W, 6th P.M., TAKEN FROM THE GROVER SOUTH, QUADRANGLE, COLORADO, WELD COUNTY, 7.5 MINUTE QUAD (TOPOGRAPHICAL MAP) PUBLISHED BY THE UNITED STATES DEPARTMENT OF THE INTERIOR, GEOLOGICAL SURVEY. SAID ELEVATION IS MARKED AS BEING 5043 FEET.



| LINE TABLE | | |
|------------|-------------|---------|
| LINE | DIRECTION | LENGTH |
| L1 | N00°33'47"E | 600.02' |
| L2 | N00°33'47"E | 300.00' |

WADE 8-59 20A-9
Elev. Ungraded Ground = 4866.4'



CERTIFICATE

THIS IS TO CERTIFY THAT THE ABOVE PLAT WAS PREPARED FROM FIELD NOTES OF ACTUAL SURVEYS MADE BY ME OR UNDER MY SUPERVISION AND THAT THE SAME ARE TRUE AND CORRECT TO THE BEST OF MY KNOWLEDGE AND BELIEF.

REGISTERED LAND SURVEYOR
REGISTRATION NO. 28285
STATE OF COLORADO

2017-08-17

PDOP = 1.4

LEGEND:

- 90° SYMBOL
- PROPOSED WELLHEAD.
- PRODUCTION INTERVAL.
- TARGET BOTTOM HOLE.
- SECTION CORNERS LOCATED. (NAD 83)

| SURFACE LOCATION 460' FSL 647' FWL | BEG. PROD. INTERVAL 600' FSL 2232' FWL | ENDING PROD. INTERVAL 600' FNL 2231' FWL | TARGET BOTTOM HOLE 300' FNL 2232' FWL |
|--|---|---|--|
| NAD 83 (SURFACE LOCATION) | NAD 83 (BEG. PROD. INTERVAL) | NAD 83 (ENDING PROD. INTERVAL) | NAD 83 (TARGET BOTTOM HOLE) |
| LATITUDE = 40°38'30.16" (40.641712) | LATITUDE = 40°38'31.23" (40.642009) | LATITUDE = 40°39'12.00" (40.653335) | LATITUDE = 40°39'14.97" (40.654158) |
| LONGITUDE = 104°00'29.64" (104.008233) | LONGITUDE = 104°00'09.06" (104.002517) | LONGITUDE = 104°00'08.44" (104.002344) | LONGITUDE = 104°00'08.39" (104.002331) |
| NAD 27 (SURFACE LOCATION) | NAD 27 (BEG. PROD. INTERVAL) | NAD 27 (ENDING PROD. INTERVAL) | NAD 27 (TARGET BOTTOM HOLE) |
| LATITUDE = 40°38'30.21" (40.641725) | LATITUDE = 40°38'31.28" (40.642021) | LATITUDE = 40°39'12.05" (40.653347) | LATITUDE = 40°39'15.01" (40.654170) |
| LONGITUDE = 104°00'27.82" (104.007728) | LONGITUDE = 104°00'07.24" (104.002012) | LONGITUDE = 104°00'06.62" (104.001839) | LONGITUDE = 104°00'06.58" (104.001827) |
| STATE PLANE NAD 83 (CO. NORTH) | STATE PLANE NAD 83 (CO. NORTH) | STATE PLANE NAD 83 (CO. NORTH) | STATE PLANE NAD 83 (CO. NORTH) |
| N: 1480100.18 E: 3413971.54 | N: 1480235.01 E: 3415555.78 | N: 1484361.41 E: 3415534.18 | N: 1484661.33 E: 3415532.62 |
| STATE PLANE NAD 27 (CO. NORTH) | STATE PLANE NAD 27 (CO. NORTH) | STATE PLANE NAD 27 (CO. NORTH) | STATE PLANE NAD 27 (CO. NORTH) |
| N: 480098.74 E: 2414122.67 | N: 480233.56 E: 2415706.95 | N: 484359.88 E: 2415685.30 | N: 484659.80 E: 2415683.72 |



UELS, LLC
Corporate Office * 85 South 200 East
Vernal, UT 84078 * (435) 789-1017

| | | | |
|-------------|------------------------|----------|------------|
| SURVEYED BY | JAMES FRESHWATER, G.B. | 10-31-17 | SCALE |
| DRAWN BY | D.COX | 11-08-17 | 1" = 1000' |

WELL LOCATION PLAT