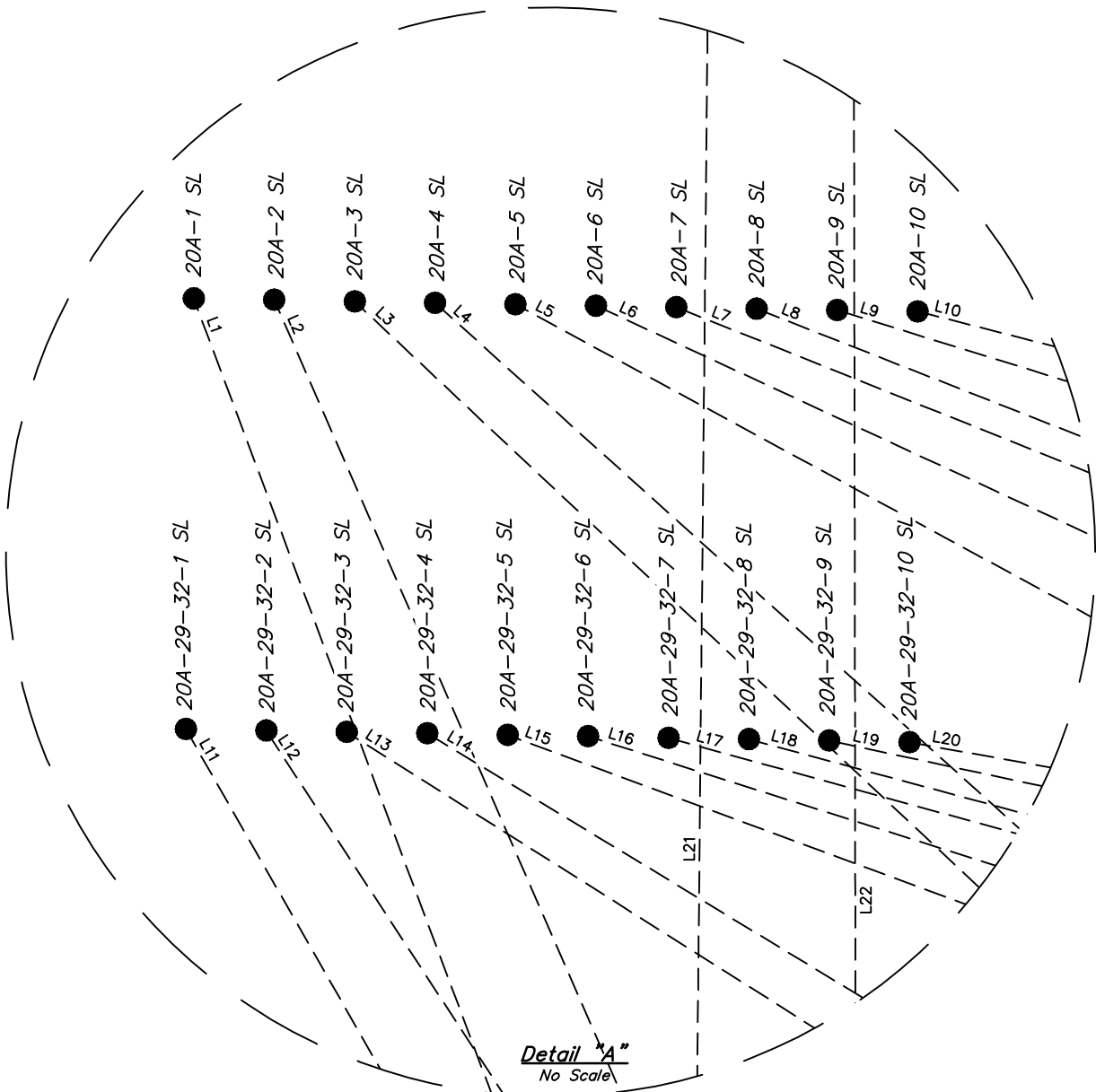
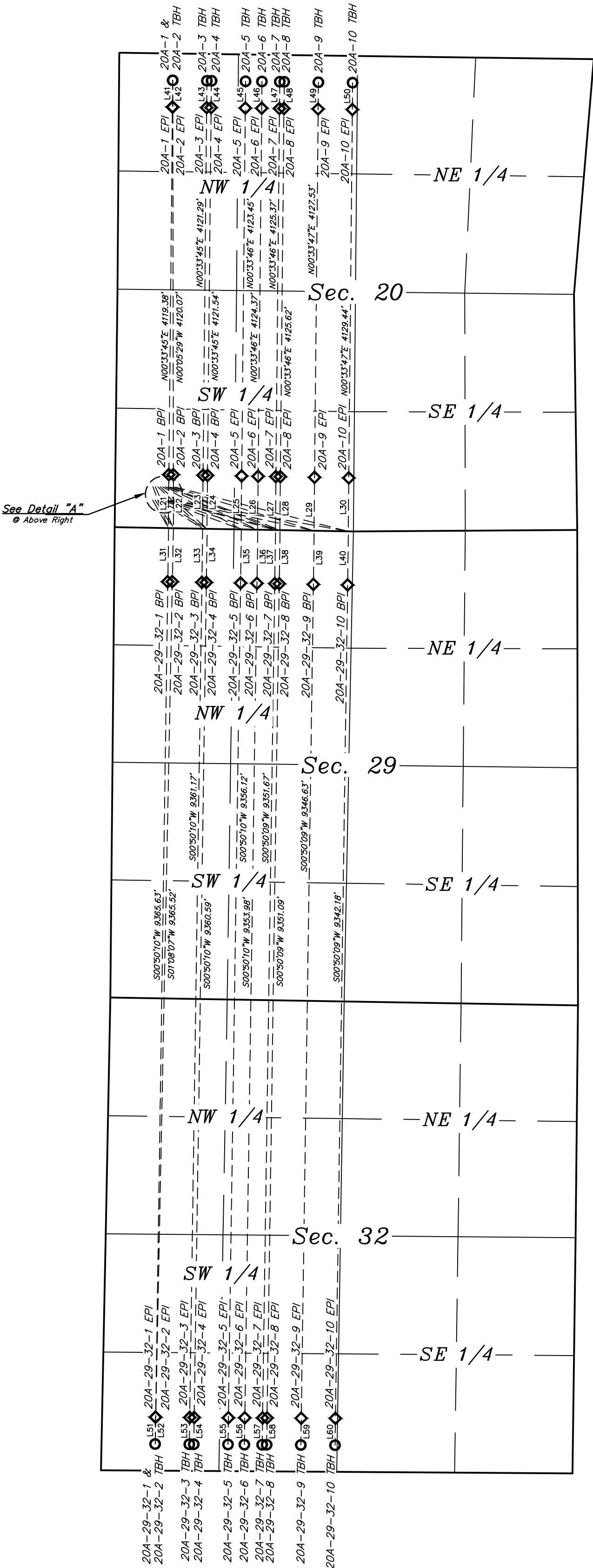




LEGEND:

- SL = SURFACE LOCATION.
- BPI = BEGINNING PRODUCTION INTERVAL.
- EPI = ENDING PRODUCTION INTERVAL.
- TBH = TARGET BOTTOM HOLE.
- = SURFACE LOCATION.
- ◇ = PRODUCTION INTERVAL.
- = TARGET BOTTOM HOLE.



LINE TABLE		
LINE	DIRECTION	LENGTH
L1	S20°31'18"E	494.59'
L2	S23°36'22"E	506.15'
L3	S46°48'26"E	685.46'
L4	S48°00'46"E	701.99'
L5	S61°29'51"E	997.68'
L6	S65°07'03"E	1138.35'
L7	S68°10'23"E	1296.62'
L8	S68°30'52"E	1317.26'
L9	S72°48'33"E	1654.51'
L10	S75°38'20"E	1997.96'
L11	S29°45'48"E	360.92'
L12	S33°07'48"E	374.65'
L13	S57°40'41"E	597.13'
L14	S58°44'02"E	616.00'
L15	S69°41'44"E	939.92'
L16	S72°24'10"E	1088.45'
L17	S74°37'57"E	1253.24'
L18	S74°52'28"E	1274.62'
L19	S77°55'35"E	1621.36'
L20	S79°54'11"E	1970.95'
L21	N00°33'45"E	600.03'
L22	N00°05'29"W	600.12'
L23	N00°33'45"E	600.02'
L24	N00°33'45"E	600.02'
L25	N00°33'46"E	600.02'
L26	N00°33'46"E	600.02'
L27	N00°33'46"E	600.02'
L28	N00°33'46"E	600.02'
L29	N00°33'47"E	600.02'
L30	N00°33'47"E	600.02'
L31	S00°50'10"W	599.99'
L32	S01°08'07"W	600.00'
L33	S00°50'10"W	599.99'
L34	S00°50'10"W	599.99'
L35	S00°50'10"W	600.00'
L36	S00°50'10"W	600.00'
L37	S00°50'09"W	600.01'
L38	S00°50'09"W	600.00'
L39	S00°50'09"W	600.00'
L40	S00°50'09"W	600.00'
L41	N00°33'45"E	300.00'
L42	N00°05'29"W	300.04'
L43	N00°33'45"E	300.00'
L44	N00°33'45"E	300.00'
L45	N00°33'46"E	300.00'
L46	N00°33'46"E	300.00'
L47	N00°33'46"E	300.00'
L48	N00°33'46"E	300.00'
L49	N00°33'47"E	300.00'
L50	N00°33'47"E	300.00'
L51	S00°50'10"W	300.01'
L52	S01°08'07"W	300.05'
L53	S00°50'10"W	300.01'
L54	S00°50'10"W	300.01'
L55	S00°50'10"W	300.01'
L56	S00°50'10"W	300.01'
L57	S00°50'09"W	300.01'
L58	S00°50'09"W	300.01'
L59	S00°50'09"W	300.01'
L60	S00°50'09"W	300.01'

REV: 2 12-11-17 J.J. (BPI & EPI CHANGE)

BISON OIL & GAS II

WADE 8-59 20A PAD
SW 1/4 SW 1/4, SECTION 20, T8N, R59W, 6th P.M.
WELD COUNTY, COLORADO

SURVEYED BY	JAMES FRESHWATER, G.B.	10-31-17	SCALE
DRAWN BY	D.COX	11-08-17	1" = 1000'
MULTI-Well PLAN		FIGURE #5	



UELS, LLC
Corporate Office * 85 South 200 East
Vernal, UT 84078 * (435) 789-1017