



Lat40°, Inc. 6250 W. 10th Street, Unit 2, Greeley, CO 970-515-5294

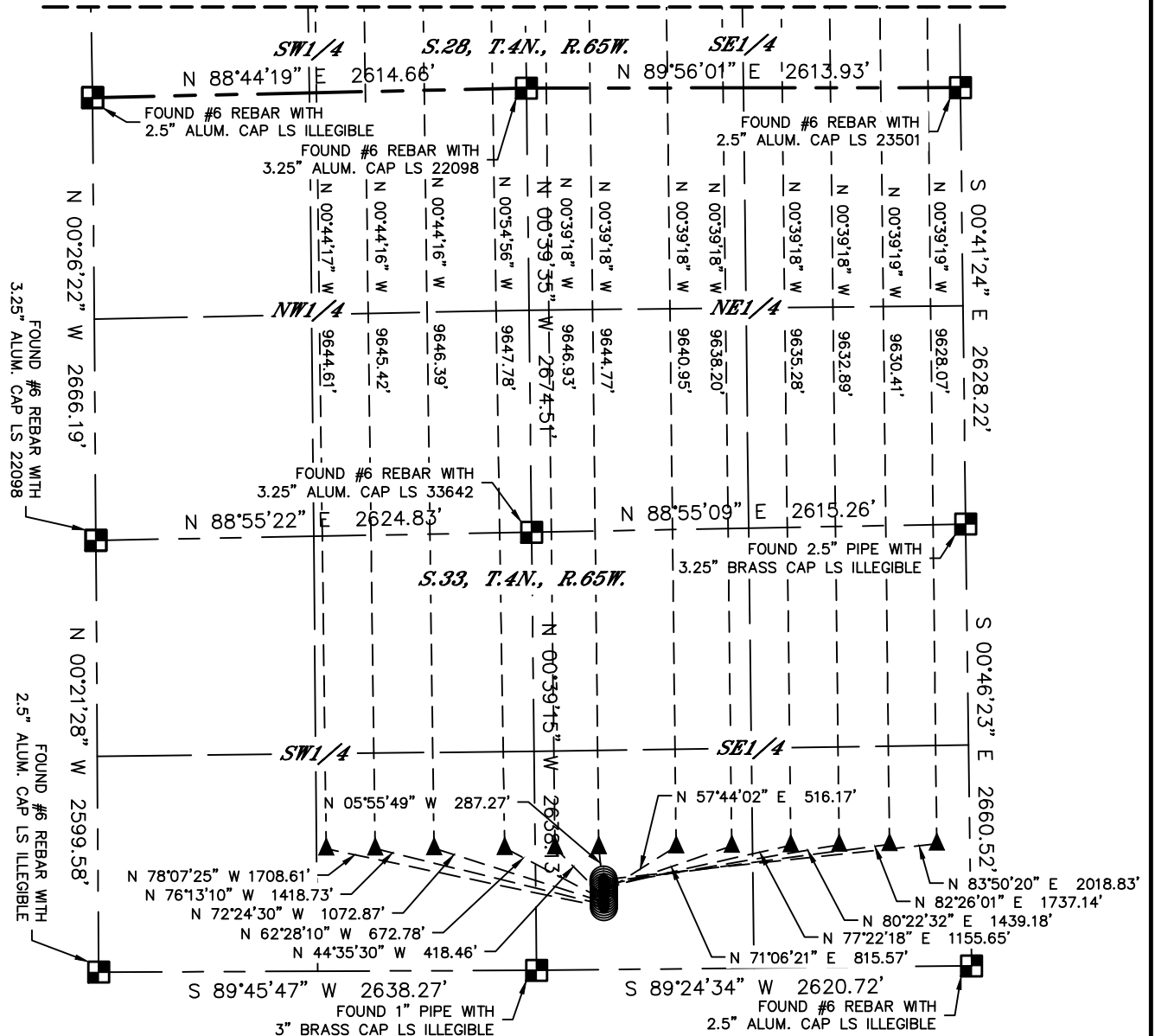
MULTI-WELL PLAN

LORY 4N65W33 1-12 PAD

SECTION: 33
TOWNSHIP: 4N
RANGE: 65W
6TH. P.M.
WELD COUNTY, CO

THIS MAP DOES NOT REPRESENT A BOUNDARY SURVEY

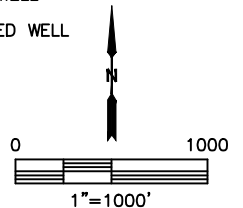
SEE SHEET 2 OF 3



LEGEND

- = ALIQUOT MONUMENT AS DESCRIBED
- = CALCULATED POSITION
- = SURFACE HOLE LOCATION (SHL)
- = ENTRY POINT LOCATION (EP)
- = BOTTOM HOLE LOCATION (BHL)
- = EXISTING WELL
- = ABANDONED WELL

#	WELL NAME	BHL FOOTAGE			BHL LAT °	BHL LONG °	BHL S-T-R	
1	LORY 1N	1376	FWL	200	FNL	40.29012	-104.67290	28-4-65
2	LORY 2N	1670	FWL	200	FNL	40.29012	-104.67185	28-4-65
3	LORY 3N	2025	FWL	200	FNL	40.29012	-104.67057	28-4-65
4	LORY 4N	2421	FWL	200	FNL	40.29011	-104.66915	28-4-65
5	LORY 5N	2500	FEL	200	FNL	40.29011	-104.66791	28-4-65
6	LORY 6N	2236	FEL	200	FNL	40.29010	-104.66697	28-4-65
7	LORY 7N	1770	FEL	200	FNL	40.29009	-104.66530	28-4-65
8	LORY 8N	1435	FEL	200	FNL	40.29009	-104.66410	28-4-65
9	LORY 9N	1079	FEL	200	FNL	40.29008	-104.66282	28-4-65
10	LORY 10N	788	FEL	200	FNL	40.29007	-104.66178	28-4-65
11	LORY 11N	485	FEL	200	FNL	40.29007	-104.66069	28-4-65
12	LORY 12N	200	FEL	200	FNL	40.29006	-104.65967	28-4-65





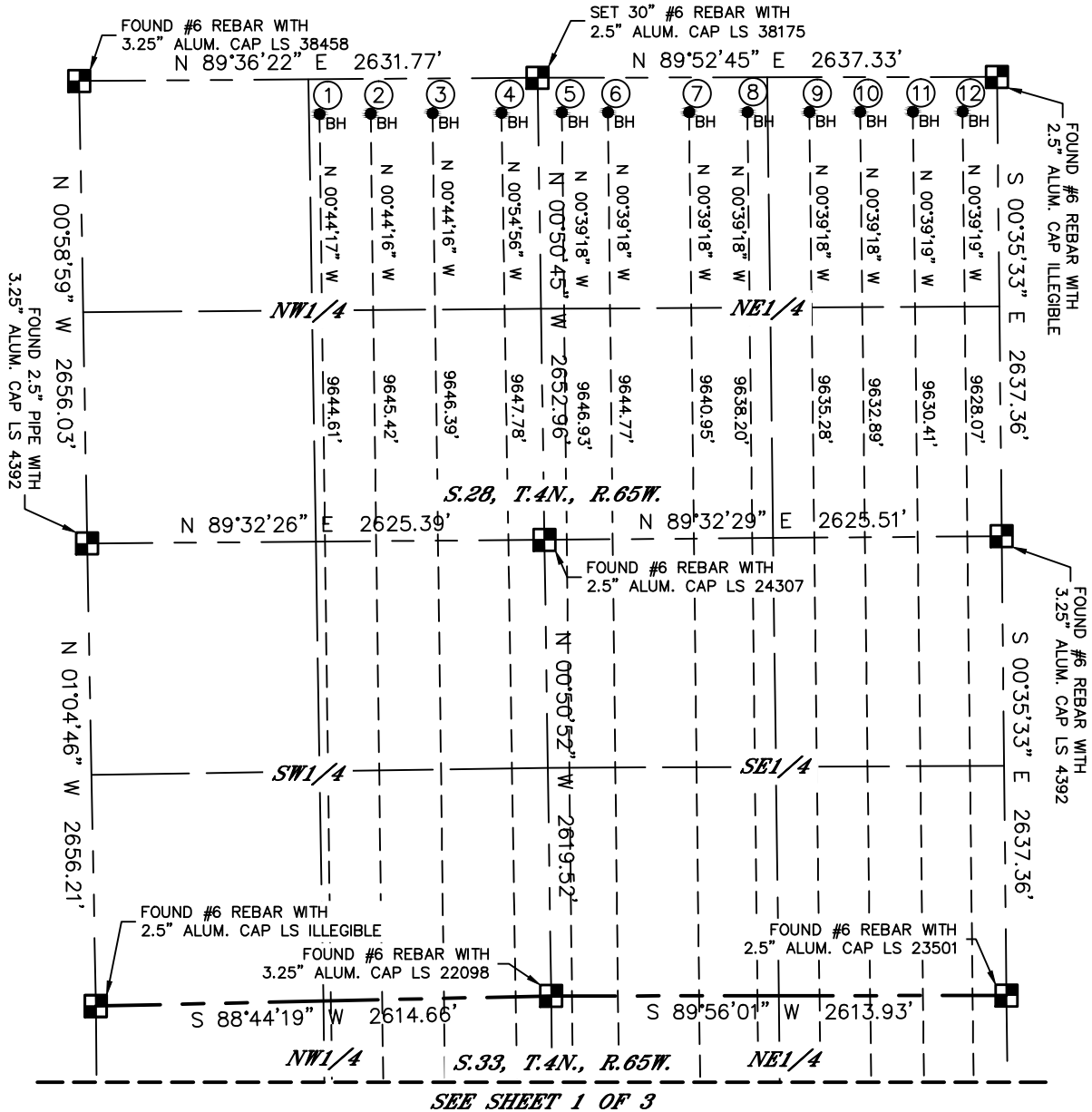
Lat40°, Inc. 6250 W. 10th Street, Unit 2, Greeley, CO 970-515-5294

MULTI-WELL PLAN

LORY 4N65W33 1-12 PAD

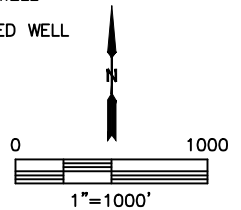
SECTION: 33
TOWNSHIP: 4N
RANGE: 65W
6TH. P.M.
WELD COUNTY, CO

THIS MAP DOES NOT REPRESENT A BOUNDARY SURVEY



LEGEND

- = ALIQUOT MONUMENT AS DESCRIBED
- = CALCULATED POSITION
- = SURFACE HOLE LOCATION (SHL)
- ▲ = ENTRY POINT LOCATION (EP)
- _{BH} = BOTTOM HOLE LOCATION (BHL)
- ⊙ = EXISTING WELL
- ⊖ = ABANDONED WELL



#	WELL NAME	BHL FOOTAGE			BHL LAT °	BHL LONG °	BHL S-T-R	
1	LORY 1N	1376	FWL	200	FNL	40.29012	-104.67290	28-4-65
2	LORY 2N	1670	FWL	200	FNL	40.29012	-104.67185	28-4-65
3	LORY 3N	2025	FWL	200	FNL	40.29012	-104.67057	28-4-65
4	LORY 4N	2421	FWL	200	FNL	40.29011	-104.66915	28-4-65
5	LORY 5N	2500	FEL	200	FNL	40.29011	-104.66791	28-4-65
6	LORY 6N	2236	FEL	200	FNL	40.29010	-104.66697	28-4-65
7	LORY 7N	1770	FEL	200	FNL	40.29009	-104.66530	28-4-65
8	LORY 8N	1435	FEL	200	FNL	40.29009	-104.66410	28-4-65
9	LORY 9N	1079	FEL	200	FNL	40.29008	-104.66282	28-4-65
10	LORY 10N	788	FEL	200	FNL	40.29007	-104.66178	28-4-65
11	LORY 11N	485	FEL	200	FNL	40.29007	-104.66069	28-4-65
12	LORY 12N	200	FEL	200	FNL	40.29006	-104.65967	28-4-65

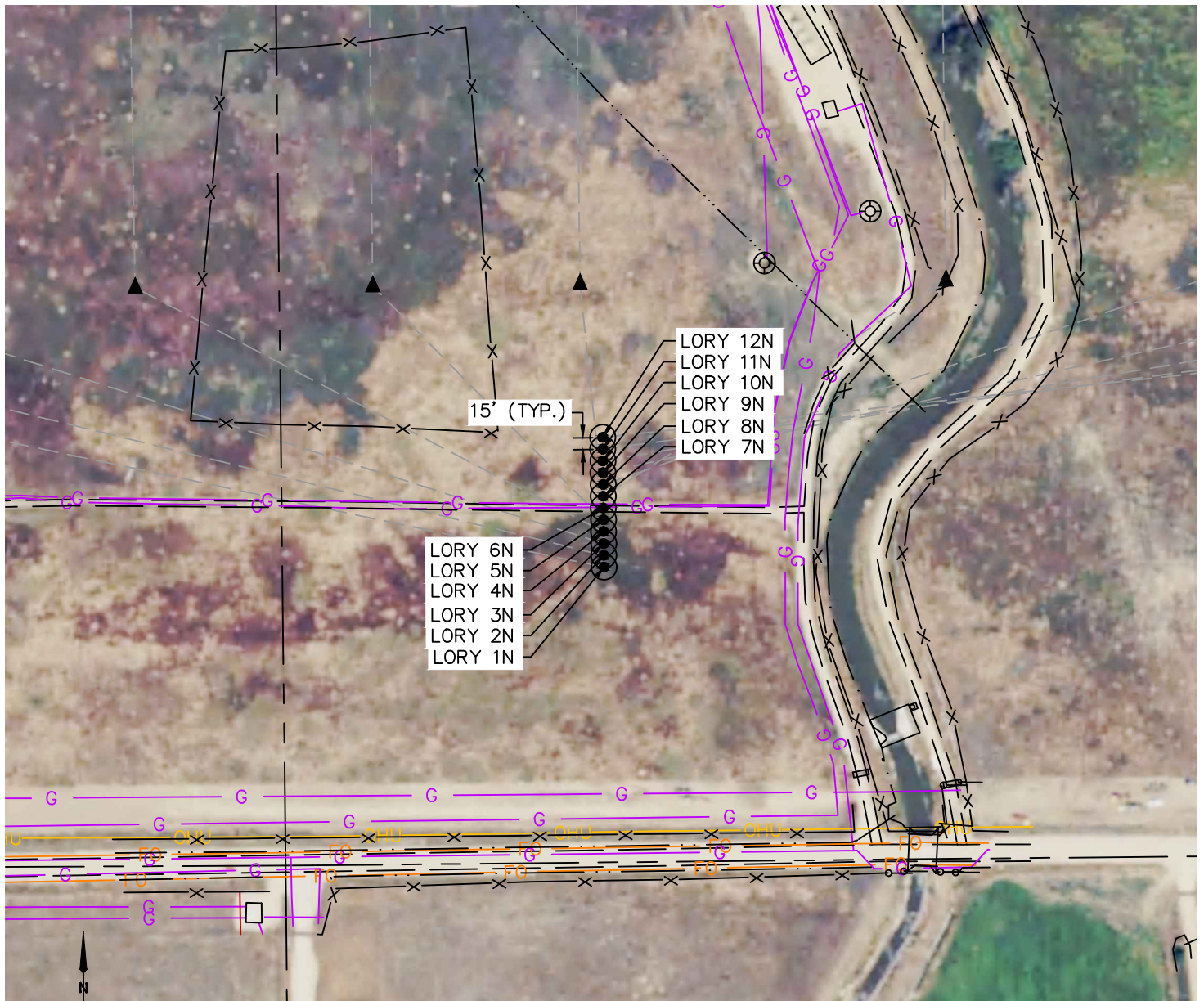


Lat40°, Inc. 6250 W. 10th Street, Unit 2, Greeley, CO 970-515-5294

MULTI-WELL PLAN

LORY 4N65W33 1-12 PAD

SECTION: 33
TOWNSHIP: 4N
RANGE: 65W
6TH. P.M.
WELD COUNTY, CO



#	WELL NAME	SHL FOOTAGE			SHL LAT °	SHL LONG °	SHL PDOP	SHL ELEV (FT.)	SHL 1/4/1/4	SHL S-T-R	
1	LORY 1N	376	FSL	2210	FEL	40.26264	-104.66680	2.1	4818	SWSE	33-4-65
2	LORY 2N	391	FSL	2210	FEL	40.26268	-104.66680	2.1	4818	SWSE	33-4-65
3	LORY 3N	406	FSL	2210	FEL	40.26273	-104.66680	2.1	4818	SWSE	33-4-65
4	LORY 4N	421	FSL	2210	FEL	40.26277	-104.66680	2.1	4818	SWSE	33-4-65
5	LORY 5N	436	FSL	2210	FEL	40.26281	-104.66680	2.7	4818	SWSE	33-4-65
6	LORY 6N	451	FSL	2210	FEL	40.26285	-104.66680	2.1	4819	SWSE	33-4-65
7	LORY 7N	466	FSL	2210	FEL	40.26289	-104.66680	2.1	4818	SWSE	33-4-65
8	LORY 8N	481	FSL	2210	FEL	40.26293	-104.66680	2.1	4818	SWSE	33-4-65
9	LORY 9N	496	FSL	2210	FEL	40.26297	-104.66680	2.1	4818	SWSE	33-4-65
10	LORY 10N	511	FSL	2210	FEL	40.26301	-104.66680	2.1	4818	SWSE	33-4-65
11	LORY 11N	526	FSL	2210	FEL	40.26306	-104.66680	2.1	4818	SWSE	33-4-65
12	LORY 12N	541	FSL	2210	FEL	40.26310	-104.66680	2.1	4818	SWSE	33-4-65