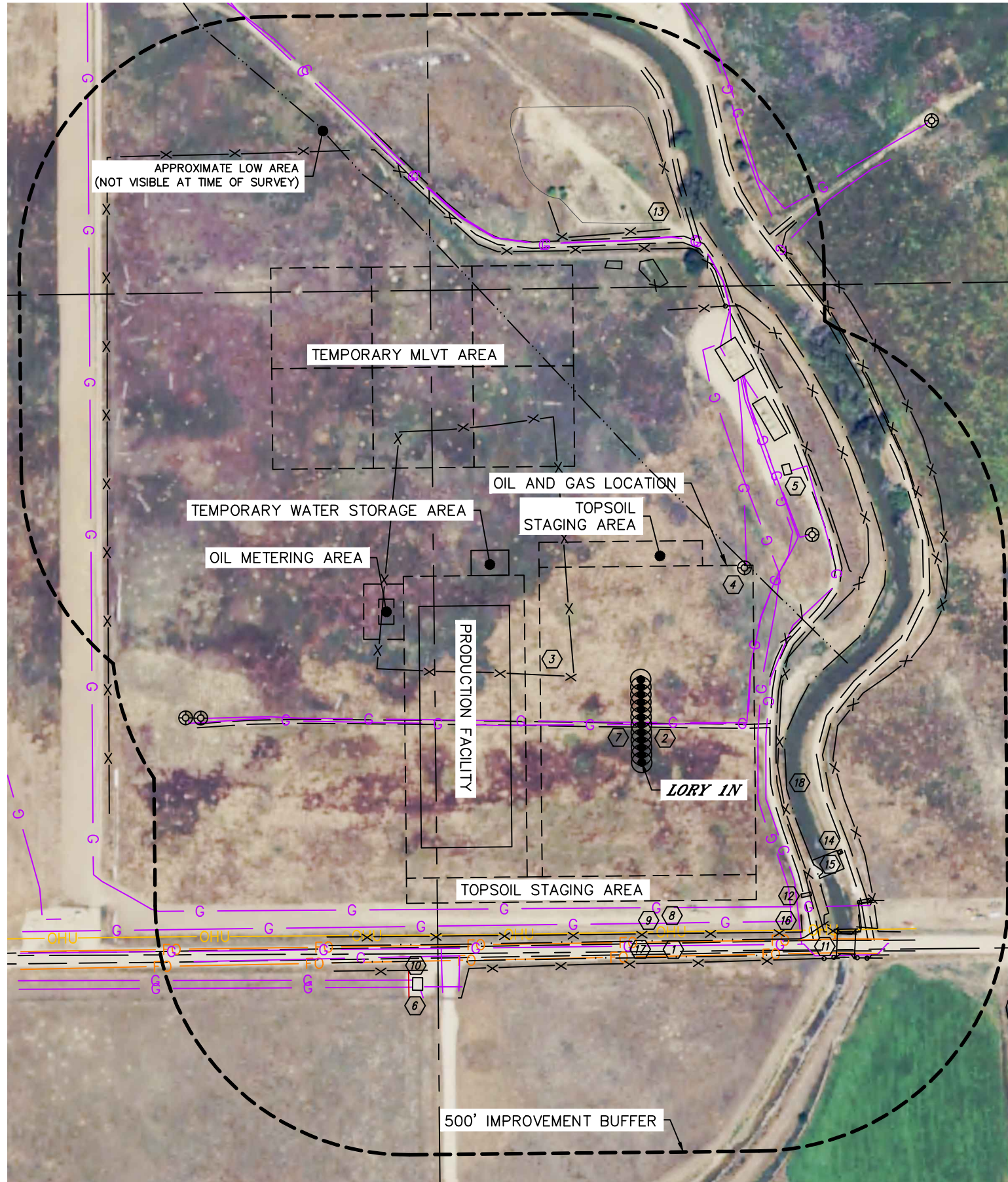


# LOCATION DRAWING

LORY 4N65W33 1-12 PAD



IMPROVEMENTS:  
(MEASURED FROM THE PROPOSED LORY 1N WELL LOCATION)

- Ⓚ NO BUILDING UNITS WITHIN 500' IMPROVEMENT BUFFER
- Ⓛ NO BUILDINGS WITHIN 500' IMPROVEMENT BUFFER
- ① COUNTY ROAD 38 360' S
- ② ROAD 70' & 1031' N, 255' & 347' E, 1074' NE
- ③ FENCE 218' NW, 270' & 380' E, 306', 563' & 692' NE, 593' SW, 942', 983', 1053' & 1086' N, 1059' W
- ④ EXISTING WELL HEAD 438' & 566' NE, 881' & 911' NW
- ⑤ EXISTING PRODUCTION EQUIPMENT (NOBLE) 638', 692' & 780' NE
- ⑥ GAS LAUNCHER/RECEIVER 611' SW
- ⑦ GAS LINE LOCATES ±76' & ±80' N, ±445', ±547', ±761', ±825', ±858', ±1079' & ±1138' NE (NOBLE), ±231' E, ±320' S, ±527', ±571' & ±628' SW (ANADARKO), ±247' E, ±365' S (DCP), ±289' S (SADDLE BUTTE)
- ⑧ OVERHEAD UTILITY LINE 337' S
- ⑨ FIBER OPTIC LINE LOCATES ±357' & ±386' S, ±512' SE
- ⑩ ELECTRIC LINE LOCATES ±621' SW
- ⑪ BRIDGE WITH GUARD RAILS 512' SE
- ⑫ CATTLE GUARD 411' & 512' SE
- ⑬ SHOOTING RANGE 1075' NE
- ⑭ IRRIGATION FLOW METER 431' SE
- ⑮ CONCRETE STRUCTURE 391' SE
- ⑯ PIPE 431', 475', 506' & 538' SE, 527' SW
- ⑰ BORROW DITCH 355' & 388' S
- ⑱ PLATTE VALLEY CANAL 285' E

