



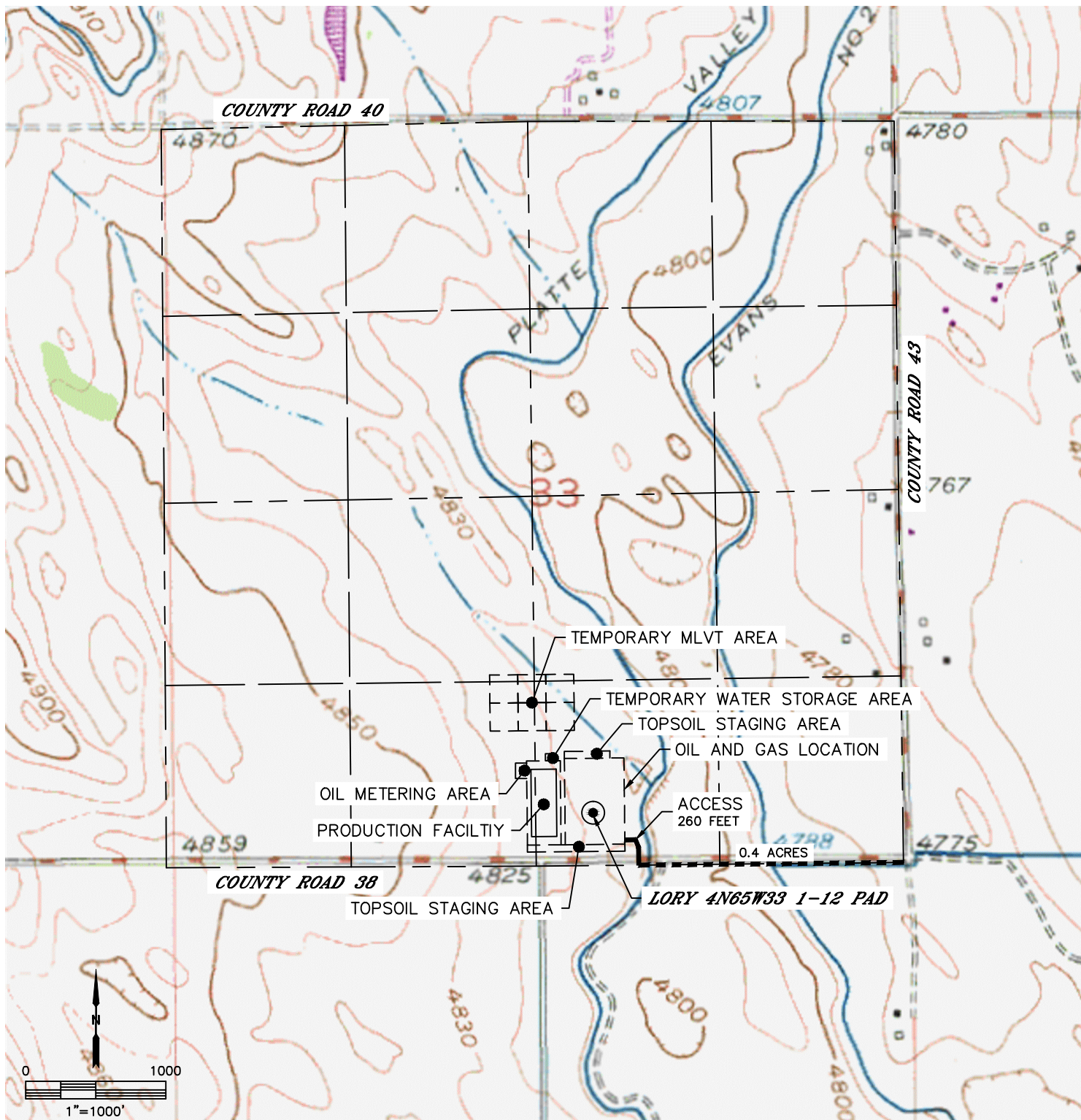
Lat40°, Inc. 6250 W. 10th Street, Unit 2, Greeley, CO 970-515-5294

# ACCESS ROAD MAP

LORY 4N65W33 1-12 PAD

SECTION: 33  
TOWNSHIP: 4N  
RANGE: 65W  
6TH. P.M.  
WELD COUNTY, CO

DRIVING DIRECTIONS TO LORY 4N65W33 1-12 PAD  
FROM THE INTERSECTION OF COUNTY ROAD 43 AND COUNTY ROAD 38, GO WEST ON COUNTY ROAD 38 FOR 0.4 MILES TO AN EXISTING ACCESS TO THE NORTH. THENCE NORTH AND WEST FOR 260 FEET TO THE PROPOSED DRILL PAD AND PRODUCTION FACILITY.





Lat40°, Inc. 6250 W. 10th Street, Unit 2, Greeley, CO 970-515-5294

# ACCESS ROAD MAP

LORY 4N65W33 1-12 PAD

SECTION: 33  
TOWNSHIP: 4N  
RANGE: 65W  
6TH. P.M.  
WELD COUNTY, CO

