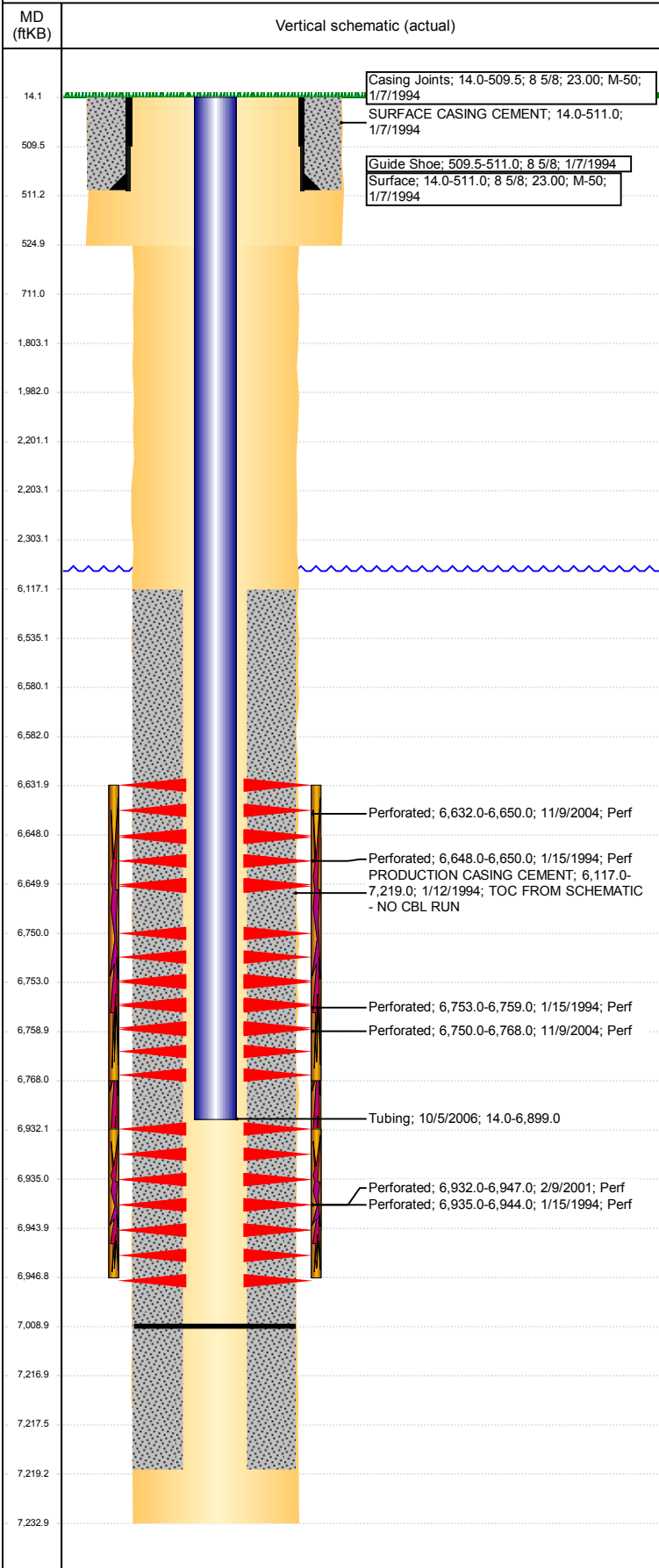


**Well Name: STROMBERGER 24-06H5**

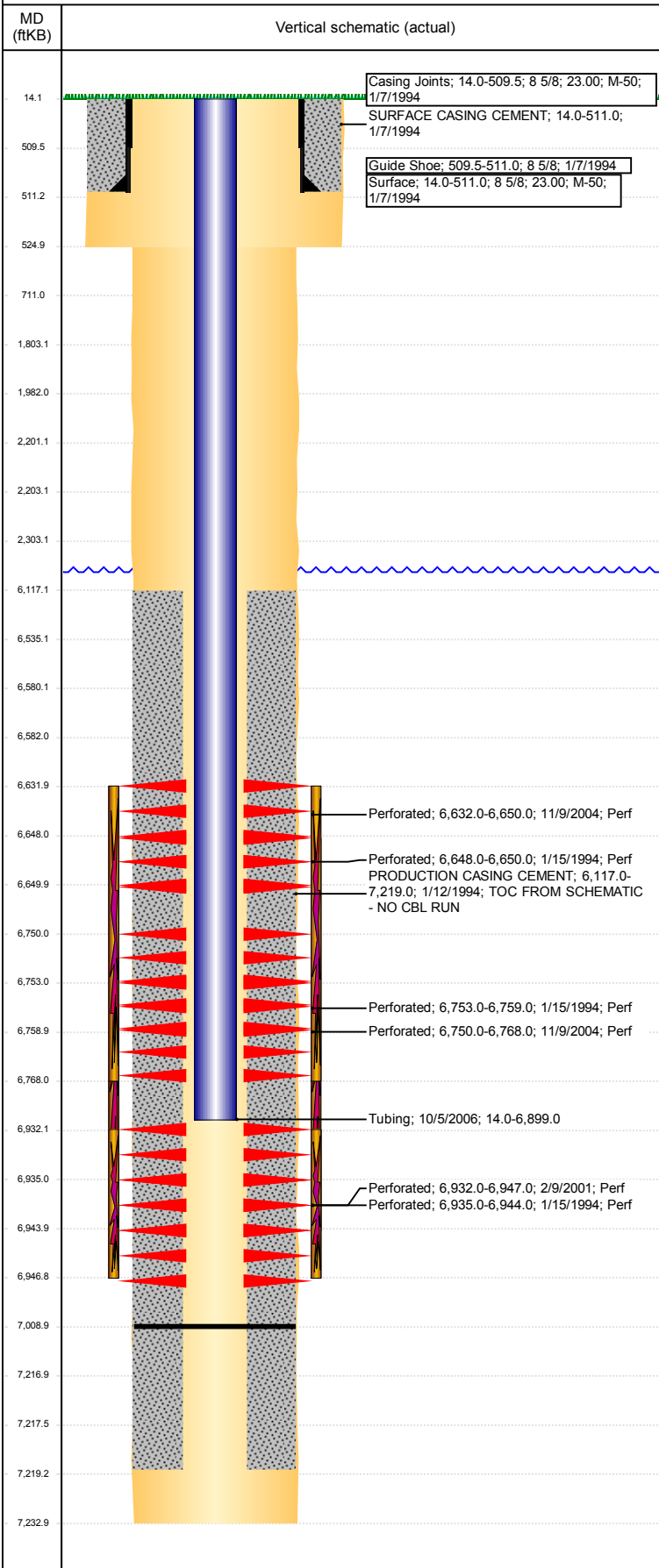
VERTICAL - ORIGINAL HOLE, 12/21/2017 2:36:23 PM



Well Header							
API 05-123-17690	Business Unit DJ BASIN	District 15	Well Config VERTICAL				
Original KB Elevation (ft) 4,647	KB - GL / MSL (ftKB) 14.00	Spud Date 1/6/1994	P & A Date				
Comment LIMITED ENTRY. DISCREPANCY: DR RPT TD DATE 1/11/1994; ST RPT TD DATE 1/12/1994. 10/5/06- THERE ARE DRILLED UP FRAGMENTS OF A COMPOSITE BRIDGE PLUG AT 7009'. TOC FROM SCHEMATIC - NO CBL RUN. STATE SHOWS SHUT IN SINCE DEC 2016.							
Directions To Well CR 47 & CR 54, N 5/10, E INTO							
Congressional Location							
Quarter 3 SE	Quarter 4 NW	Section 24	Township 5				
Township N/S Dir N		Range 65	Range E/W Dir W				
Bottom Hole Location							
North-South Distance (ft)	From N or S Line	East-West Distance (ft)	From E or W Line				
Plug Back Total Depths							
Date	Depth (ftKB)	Method	Com				
1/12/1994	7,176.0	CASING TALLY	TOP OF FLOAT COLLAR				
1/19/1994	7,176.0	TAG	CLEAN OUT TO LAND TUBING				
10/5/2006	7,009.0	TAG	CLEAN OUT TO LAND TUBING				
Wellbore Sections							
Section Des	Size (in)	Act Top, MD (ftKB)	Act Btm, MD (ftKB)				
SURFACE	12 1/4	14	525				
PRODUCTION	7 7/8	525	7,233				
Zone Statuses							
Zone Name	Status Date	Status	Fluid Type	Job	Prod Method		
CODELL	2/4/1994	PR	Water	DRILLING/CO...	Flowing		
CODELL	3/5/2001	PR		RE-FRAC, 2/8/...			
CODELL	11/9/2004	SI		RE-FRAC, 11/4/...			
CODELL	11/13/2006	PR		TRI-FRAC, 9/2/...			
CODELL	2/3/2010	PR					
CODELL	2/9/2017	SI					
NIOBRARA	2/4/1994	PR	Water	DRILLING/CO...	Flowing		
NIOBRARA	11/11/2004	PR		RE-FRAC, 11/4/...			
NIOBRARA	2/3/2010	PR					
Casing Strings							
Surface, 511.0ftKB							
Casing Description Surface	Run Date 1/7/1994	OD (in) 8 5/8	Wt/Len (l...) 23.00	Grade M-50	Top, MD (ft...) 14.0	MD (ftKB) 511.0	
Production, 7,219.0ftKB							
Casing Description Production	Run Date 1/12/1994	OD (in) 3 1/2	Wt/Len (l...) 7.70	Grade M-75	Top, MD (ft...) 14.0	MD (ftKB) 7,219.0	
Cement							
Description SURFACE CASING CEMENT	Top Depth (ftKB) 14.0	Bottom Depth (ftKB) 511.0					
Description PRODUCTION CASING CEMENT	Top Depth (ftKB) 6,117.0	Bottom Depth (ftKB) 7,219.0					
Description SHOE PLUG	Top Depth (ftKB) 14.1	Bottom Depth (ftKB) 711.0					
Description DUMP BAIL	Top Depth (ftKB) 6,535.0	Bottom Depth (ftKB) 6,580.0					
Description COURTESY PLUG	Top Depth (ftKB) 1,982.0	Bottom Depth (ftKB) 2,201.0					
Description COURTESY PLUG	Top Depth (ftKB) 1,803.0	Bottom Depth (ftKB) 2,303.0					
Description COURTESY PLUG	Top Depth (ftKB) 2,203.0	Bottom Depth (ftKB) 2,303.0					
Tubing Strings							
Tubing Description Tubing	Run Date 10/5/2006	String... 2 1/16	ID (in) 1.75	Wt (lb/ft) 3.25	Grade J-55	Len (ft) 6,885.00	Set De...
Tubing Components							
Item Des	OD (in)	Wt (lb/ft)	Grade	Jts	Len (ft)	Btm (ftKB)	Btm (TVD) (ftKB)
Tubing	2 1/16	3.25	J-55	214	6,883.40	6,897.4	
Seal Nipple	2 1/16			1	1.00	6,898.4	

**Well Name: STROMBERGER 24-06H5**

VERTICAL - ORIGINAL HOLE, 12/21/2017 2:36:23 PM



Tubing Components							
Item Des	OD (in)	Wt (lb/ft)	Grade	Jts	Len (ft)	Btm (ftKB)	Btm (TVD) (ftKB)
Notched collar	2 1/16			1	0.60	6,899.0	

Other In Hole					
Run Date	Des	OD (in)	Top (ftKB)	Btm (ftKB)	
11/6/2017	CICR	3.068	2,201.0	2,203.0	
11/6/2017	Cast Iron Bridge Plug	3.068	6,580.0	6,582.0	

Logs			
Date	Type	Top, MD (ftKB)	Btm, MD (ftKB)
1/11/1994	COMPENSATED DENSITY	4,190.0	7,231.0
1/11/1994	INDUCTION	512.0	7,231.0
1/15/1994	GAMMA RAY	6,550.0	7,162.0
8/12/2016	GYRO	0.0	6,800.0

Perforation Data					
Linked Zone	Bnch/St g	Sum of Entered Shot Total	Top (ftKB)	Btm (ftKB)	Date
		0	2,303.00	2,303.00	11/6/2017
NIOBRARA, ORIGINAL HOLE	A	108	6,632.00	6,650.00	11/9/2004
NIOBRARA, ORIGINAL HOLE		2	6,648.00	6,650.00	1/15/1994
NIOBRARA, ORIGINAL HOLE	B	108	6,750.00	6,768.00	11/9/2004
NIOBRARA, ORIGINAL HOLE		4	6,753.00	6,759.00	1/15/1994
CODELL, ORIGINAL HOLE		60	6,932.00	6,947.00	2/9/2001
CODELL, ORIGINAL HOLE		9	6,935.00	6,944.00	1/15/1994

<b>Total (Sum)</b>		<b>291</b>			
--------------------	--	------------	--	--	--

Stimulation Intervals		
Start Date	Primary Job Type	
1/18/1994	DRILLING/COMPLETION - ORIGINAL	
Technical Result	Tech Result Details	Tech Result Note

Comment  
CODELL/NIOBRARA FRAC LIMITED ENTRY

Start Date	Primary Job Type	
2/28/2001	RE-FRAC	
Technical Result	Tech Result Details	Tech Result Note

Comment  
CODELL REFRAC

Start Date	Primary Job Type	
11/10/2004	RE-FRAC	
Technical Result	Tech Result Details	Tech Result Note

Comment  
NIOBRARA REFRAC

Start Date	Primary Job Type	
10/3/2006	TRI-FRAC	
Technical Result	Tech Result Details	Tech Result Note

Comment  
CODELL TRIFRAC