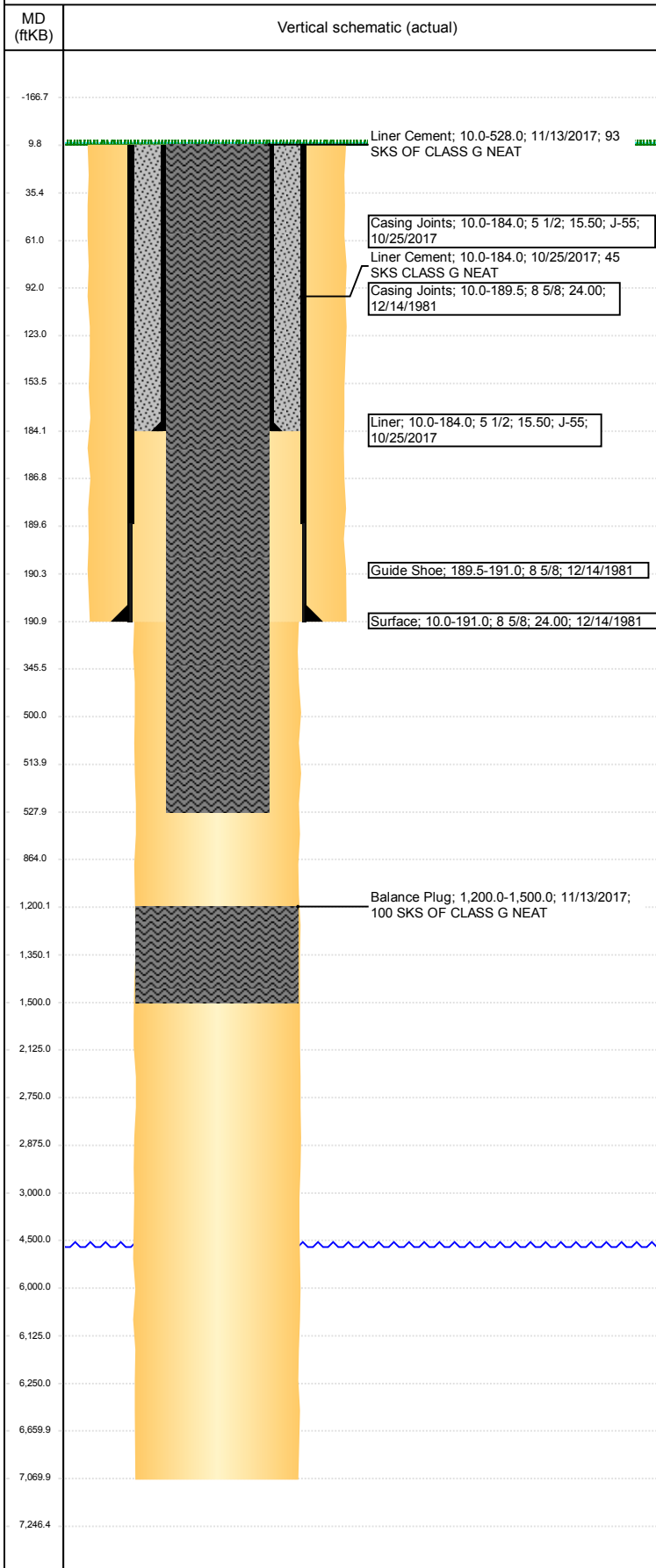


Well Name: JUDE 1

VERTICAL - ORIGINAL HOLE, 12/19/2017 8:40:08 AM



Well Header

API 05-123-10501	Business Unit DJ BASIN	District 15	Well Config VERTICAL
Original KB Elevation (ft) 4,717	KB - GL / MSL (ftKB) 10.00	Spud Date 12/14/1981	P & A Date 12/21/1981
Comment			

Directions To Well

WCR 67 & 68, EAST 0.2, SOUTH 1.9, EAST 3.5, SOUTH 1 MILE, EAST 1 MILE, SOUTH 1.5 MILES TO WINDMILL INTO.

Congressional Location

Quarter 3 SW	Quarter 4 NW	Section 9	Township 5	Twntshp N/S Dir N	Range 62	Range E/W Dir W
-----------------	-----------------	--------------	---------------	----------------------	-------------	--------------------

Bottom Hole Location

North-South Distance (ft)	From N or S Line	East-West Distance (ft)	From E or W Line
---------------------------	------------------	-------------------------	------------------

Plug Back Total Depths

Date	Depth (ftKB)	Method	Com

Wellbore Sections

Section Des	Size (in)	Act Top, MD (ftKB)	Act Btm, MD (ftKB)
SURFACE	12 1/4	10	191
PRODUCTION	7 7/8	191	7,070

Zone Statuses

Zone Name	Status Date	Status	Fluid Type	Job	Prod Method

Casing Strings

Liner, 184.0ftKB

Casing Description	Run Date	OD (in)	Wt/Len (l...)	Grade	Top, MD (ft...)	MD (ftKB)
Liner	10/25/2017	5 1/2	15.50	J-55	10.0	184.0

Surface, 191.0ftKB

Casing Description	Run Date	OD (in)	Wt/Len (l...)	Grade	Top, MD (ft...)	MD (ftKB)
Surface	12/14/1981	8 5/8	24.00		10.0	191.0

Cement

Description	Top Depth (ftKB)	Bottom Depth (ftKB)
Surface Casing Cement	10.0	191.0
Cement Plug	123.0	191.0
Cement Plug	10.0	61.0
Cement Plug	6,000.0	6,250.0
Cement Plug	2,750.0	3,000.0
Cement Plug	10.0	500.0
Cement Plug	10.0	184.0
Balance Plug	1,200.0	1,500.0
Liner Cement	10.0	528.0

Tubing Strings

Tubing Description	Run Date	String...	ID (in)	Wt (lb/ft)	Grade	Len (ft)	Set De...

Other In Hole

Run Date	Des	OD (in)	Top (ftKB)	Btm (ftKB)

Logs

Date	Type	Top, MD (ftKB)	Btm, MD (ftKB)