

WELLBORE DIAGRAM
 EXTRACTION OIL & GAS
 Mickey 6
 SWNE 5 6N 67W
 WELD COUNTY
 05-123-43849

Existing

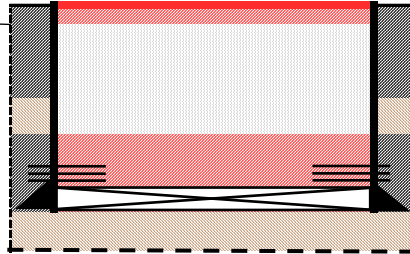
AS-PLUGGED

hole size: 12-1/4"

9-5/8" 36# @ 1000'
 cmt w/ 750
 (987-724' & 236-0')

Perf and Squeeze
 @990
 No circulation
 CIBP @ 990'

DWW: 300'
 Laramie-Fox Hills: n/a



Welded cap
 10 sks at surface

20 sx from 965-913'
 Class G mixed at 15.8 ppg,
 1.15 cuft/sk

Legend	
	Water
	Existing Cement
	New Cement
	Existing Mud