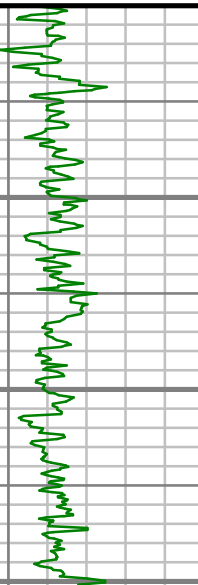

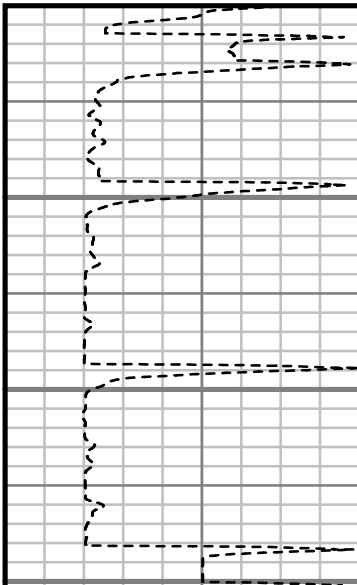

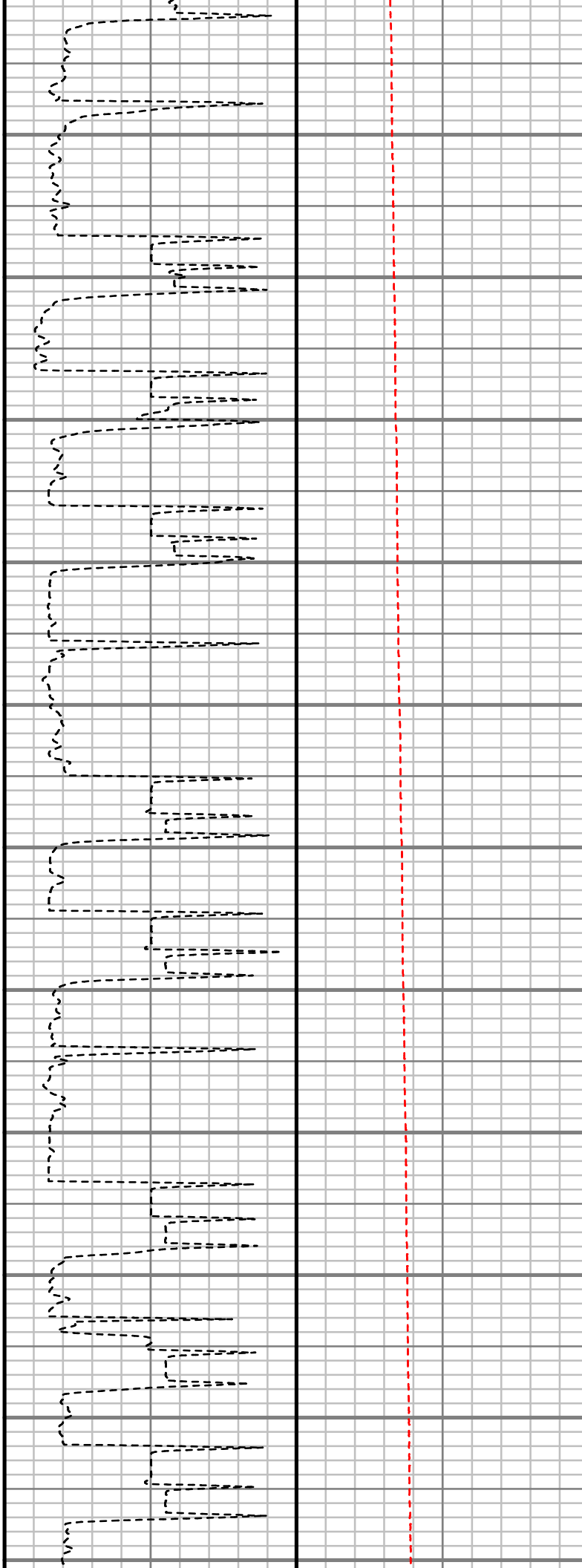
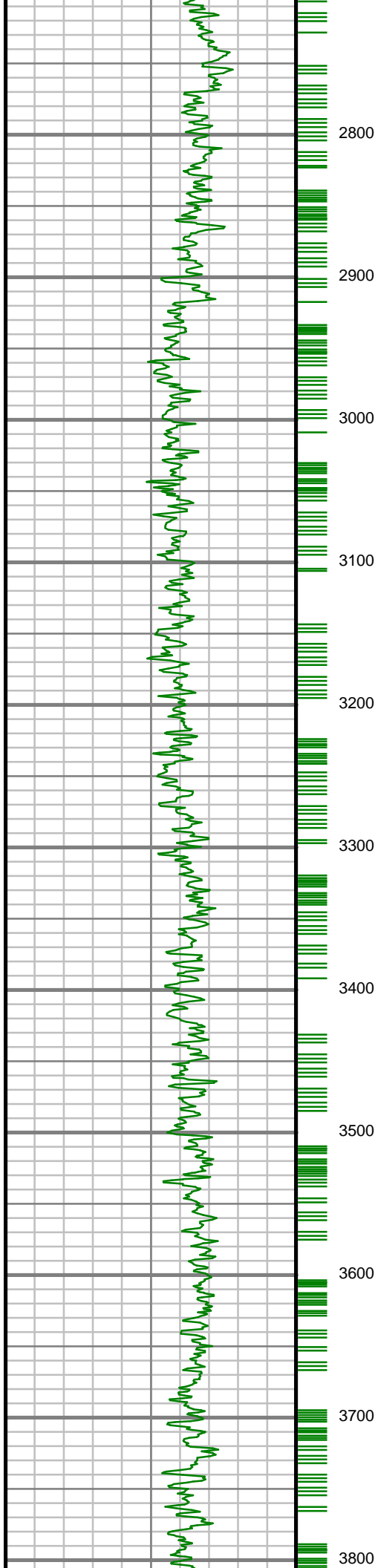
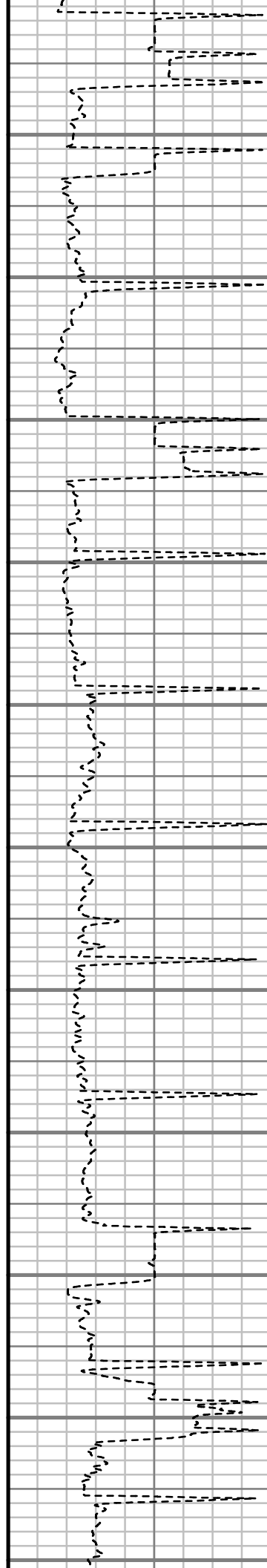
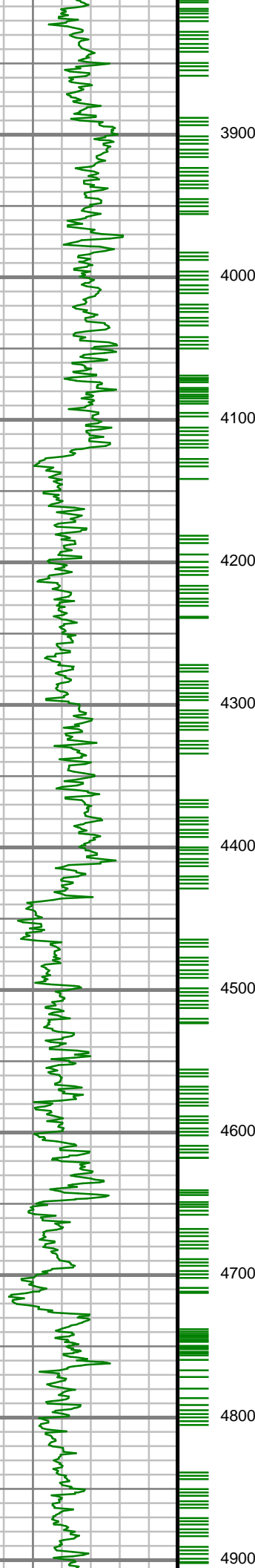


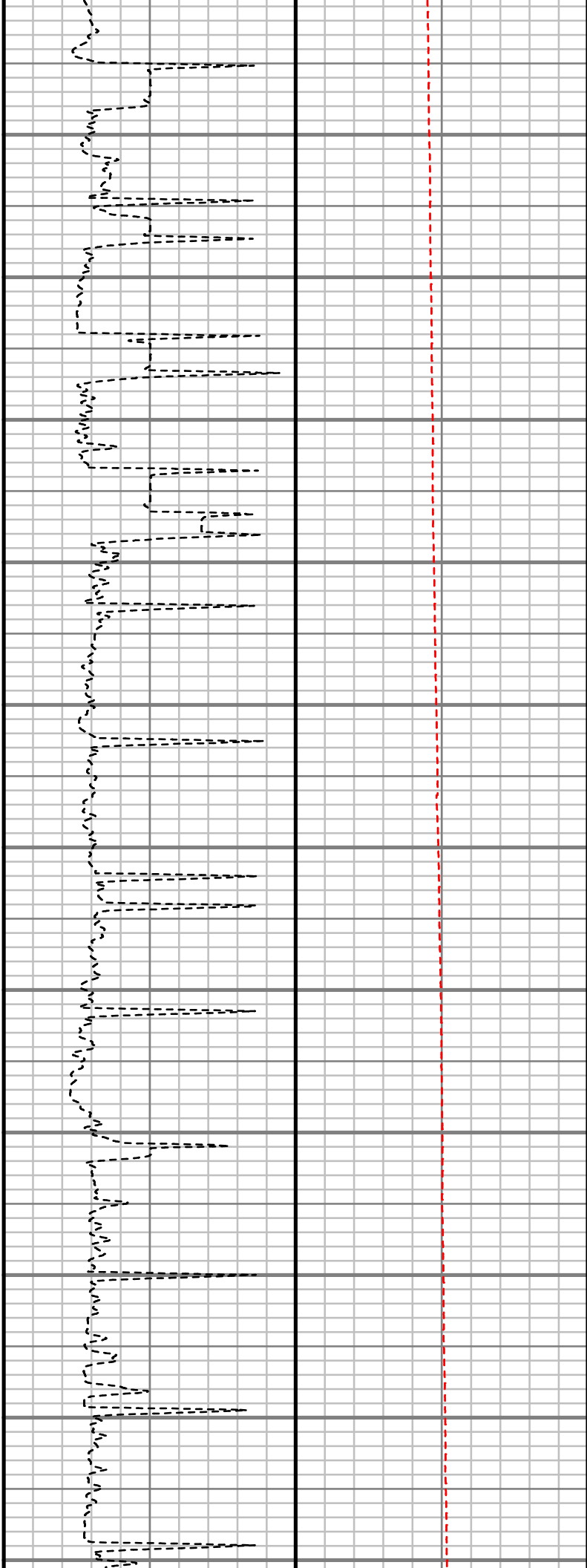
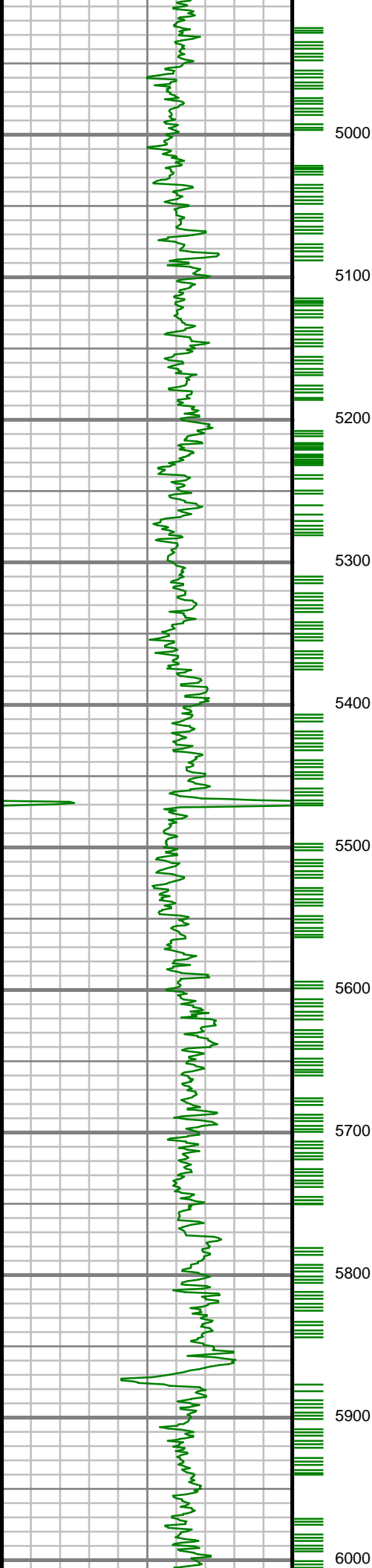
[illegible]

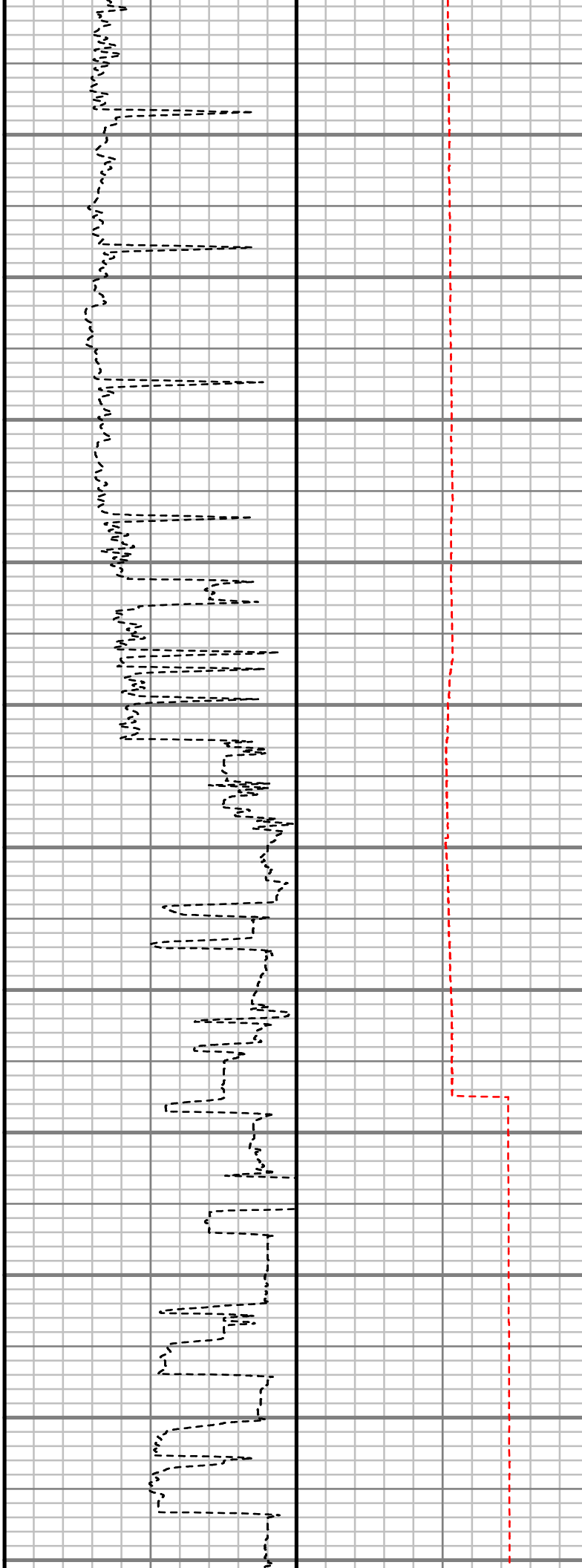
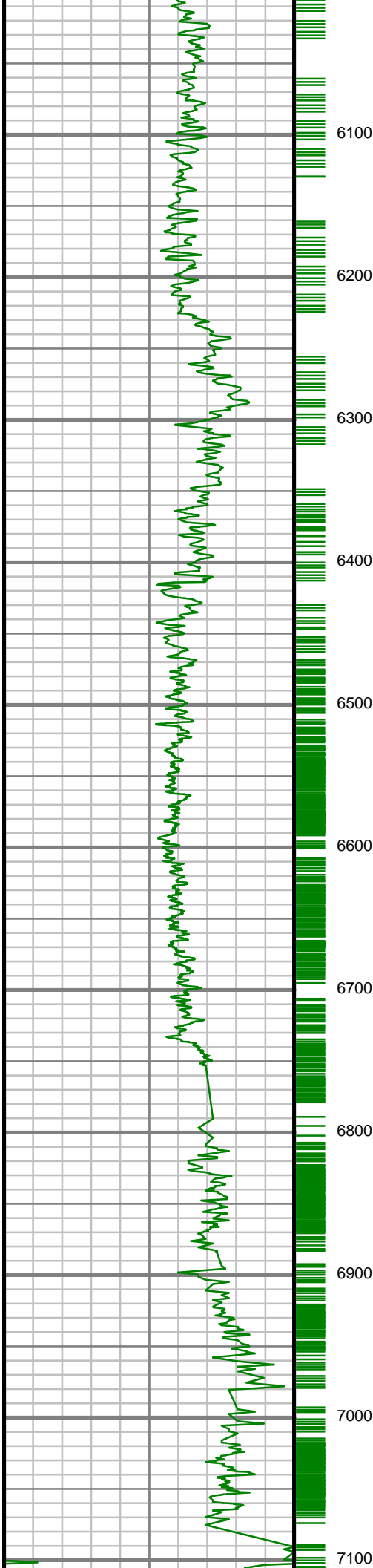
All interpretations are opinions based on inferences from electrical or other measurements and we cannot, and do not guarantee the accuracy or correctness of any interpretations, and we shall not, except in the case of gross or willful negligence on our part, be liable or responsible for any loss, costs, damages or expenses incurred or sustained by anyone resulting from any interpretation made by any of our officers, agents or employees. These interpretations are also subject to our general terms and conditions as set out in our current price schedule.

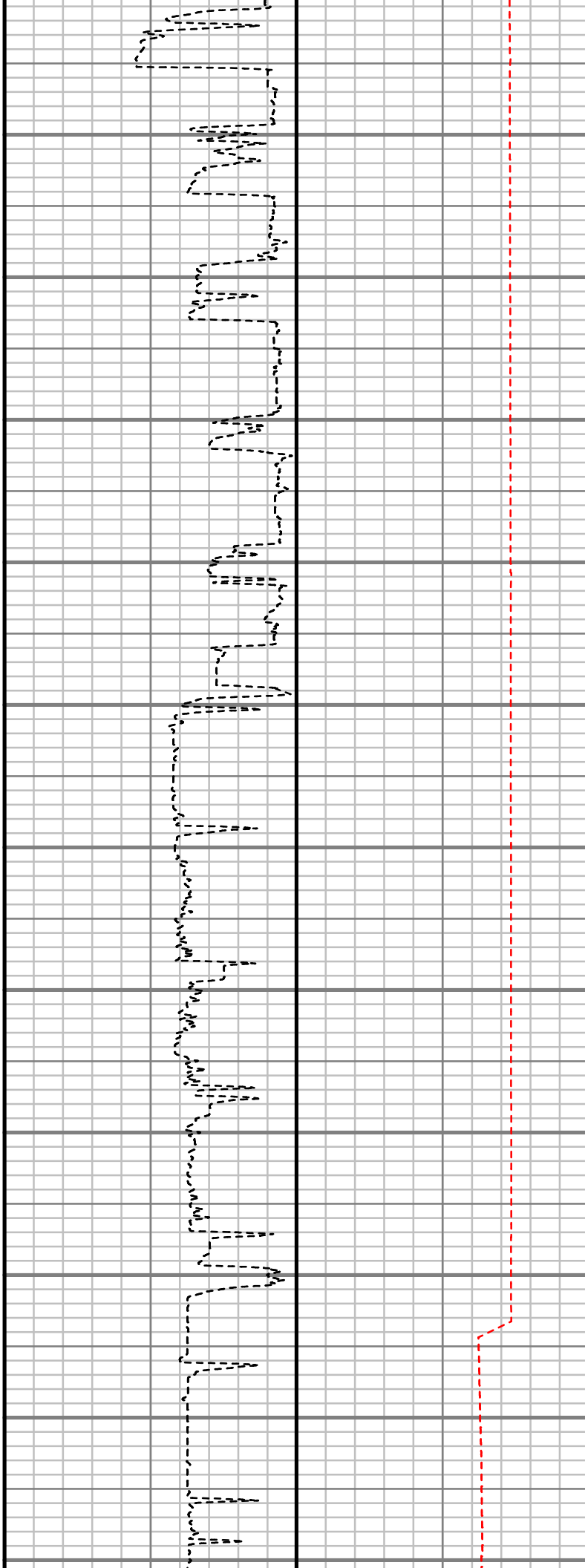
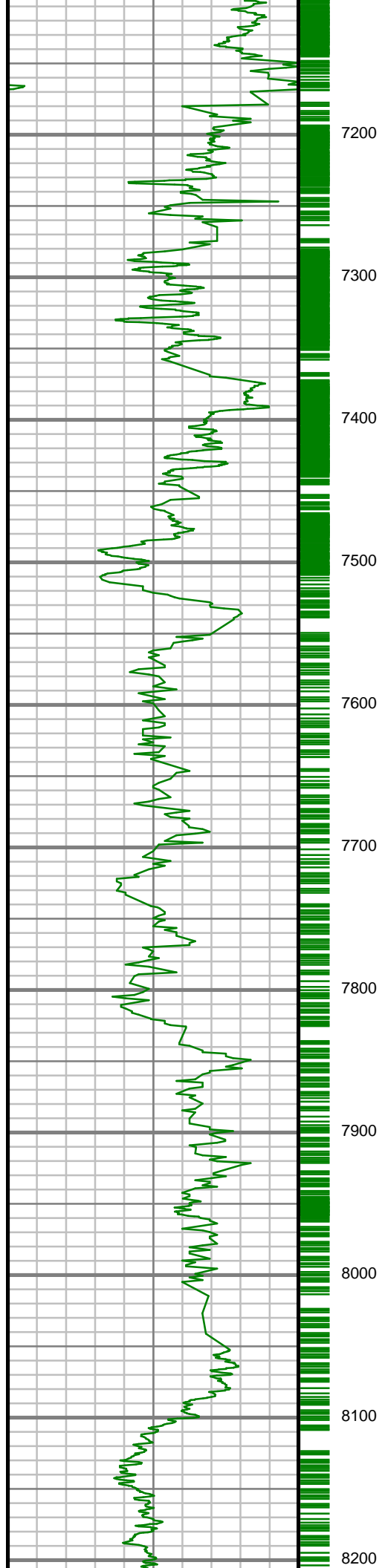
ANADARKO E&P ONSHORE LLC COOK 1N-28HZ WATTENBERG FIELD WELD COUNTY, COLORADO 05-123-42238				
Merge Gamma Ray (GR) 0 Unit = aapi 200	MEASURED DEPTH 1:1200 (ft)	Rate of Penetration (ROP) 1000 Unit = ft/hr 0	Tool Temperature (T-TEMP) 0 Unit = °F 300	Comments
				

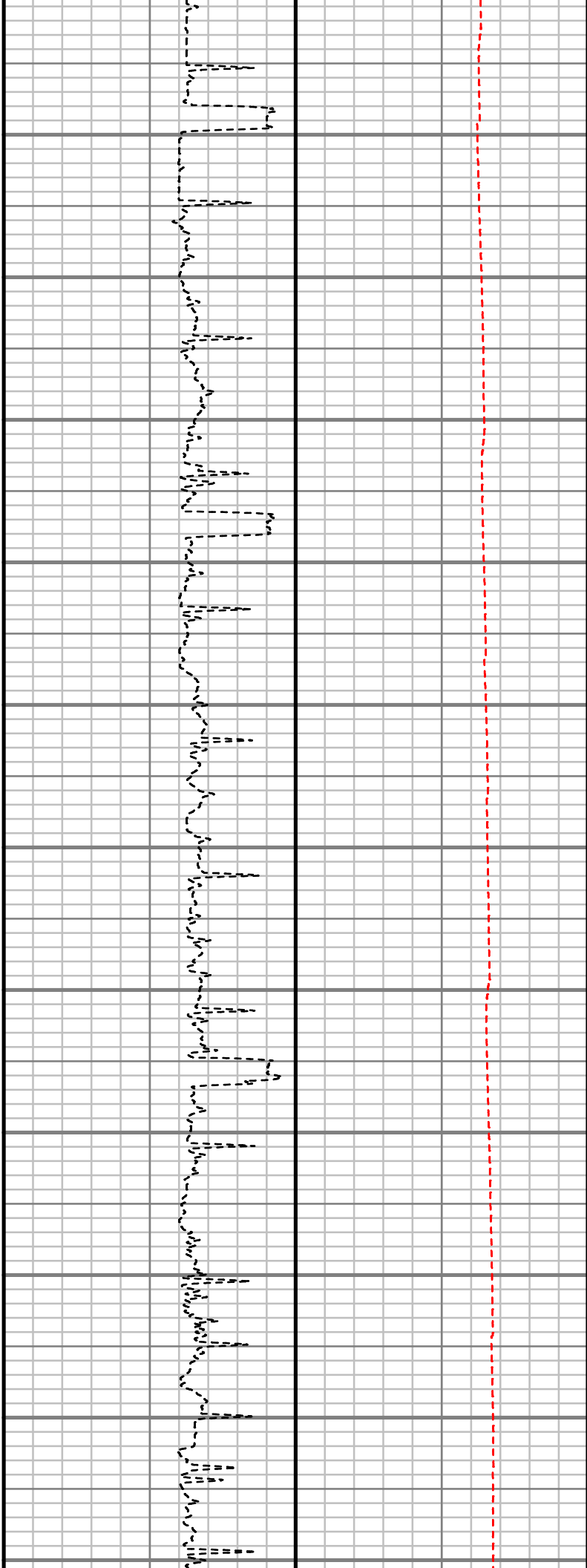
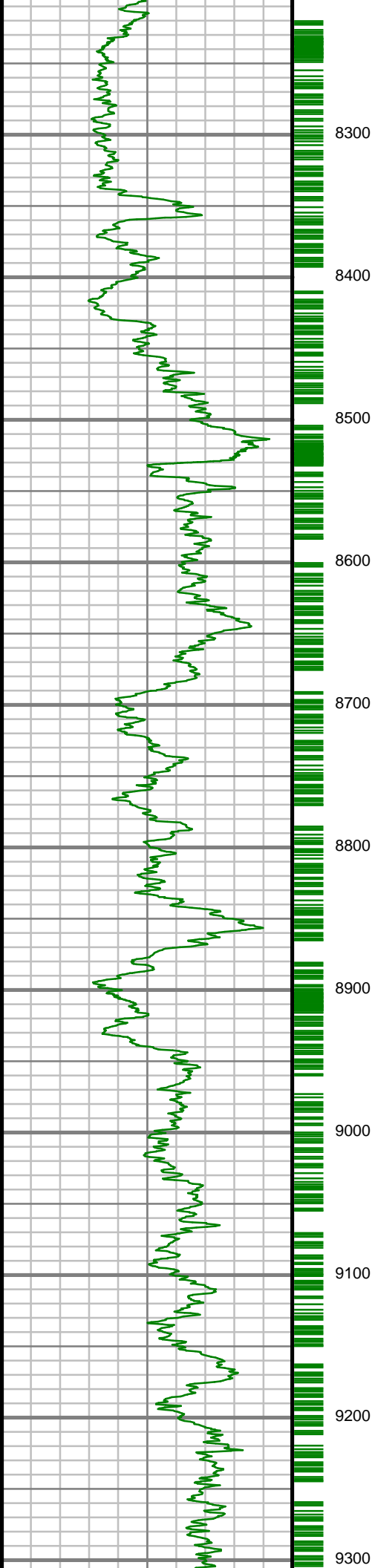


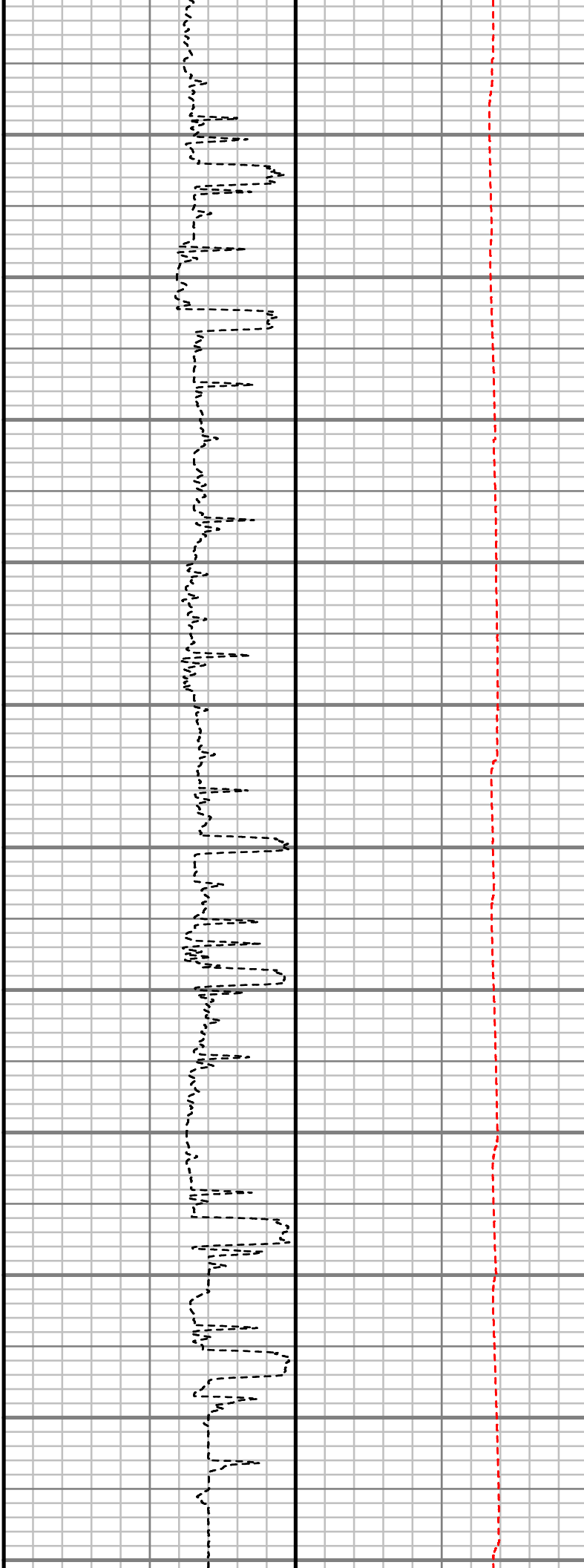
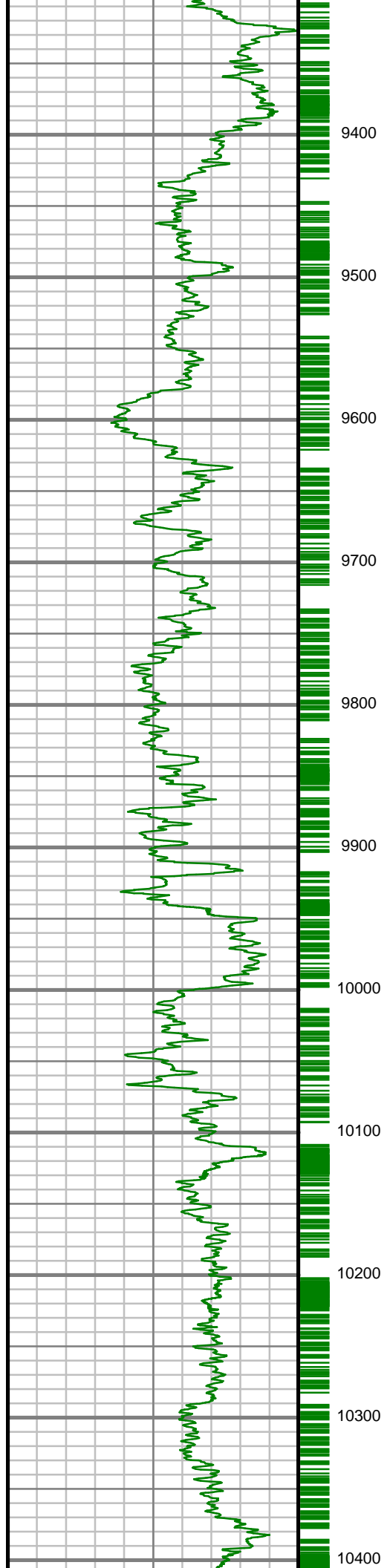


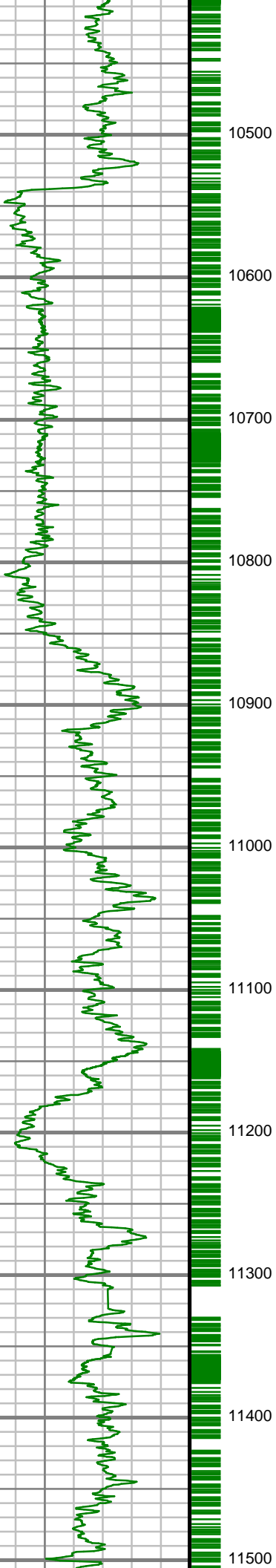












10500

10600

10700

10800

10900

11000

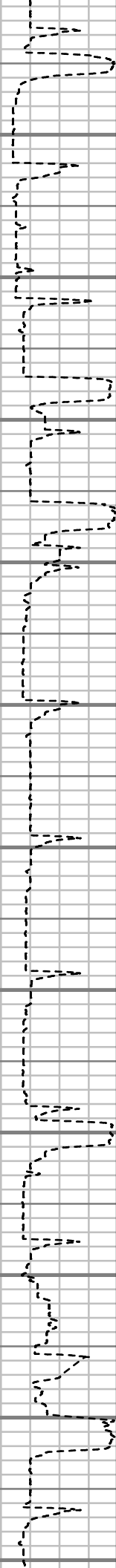
11100

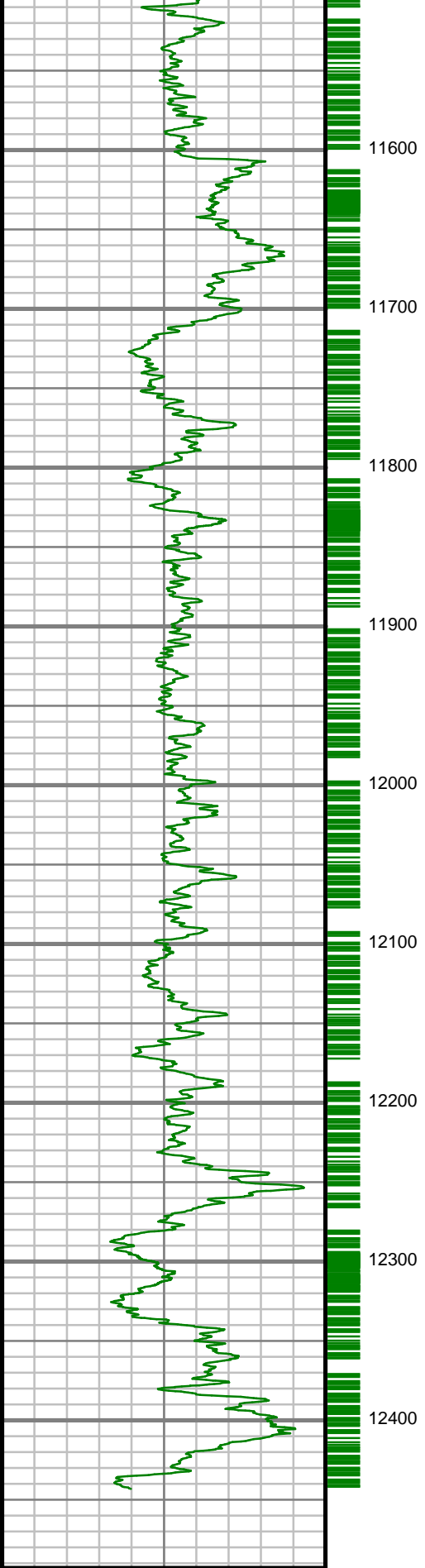
11200

11300

11400

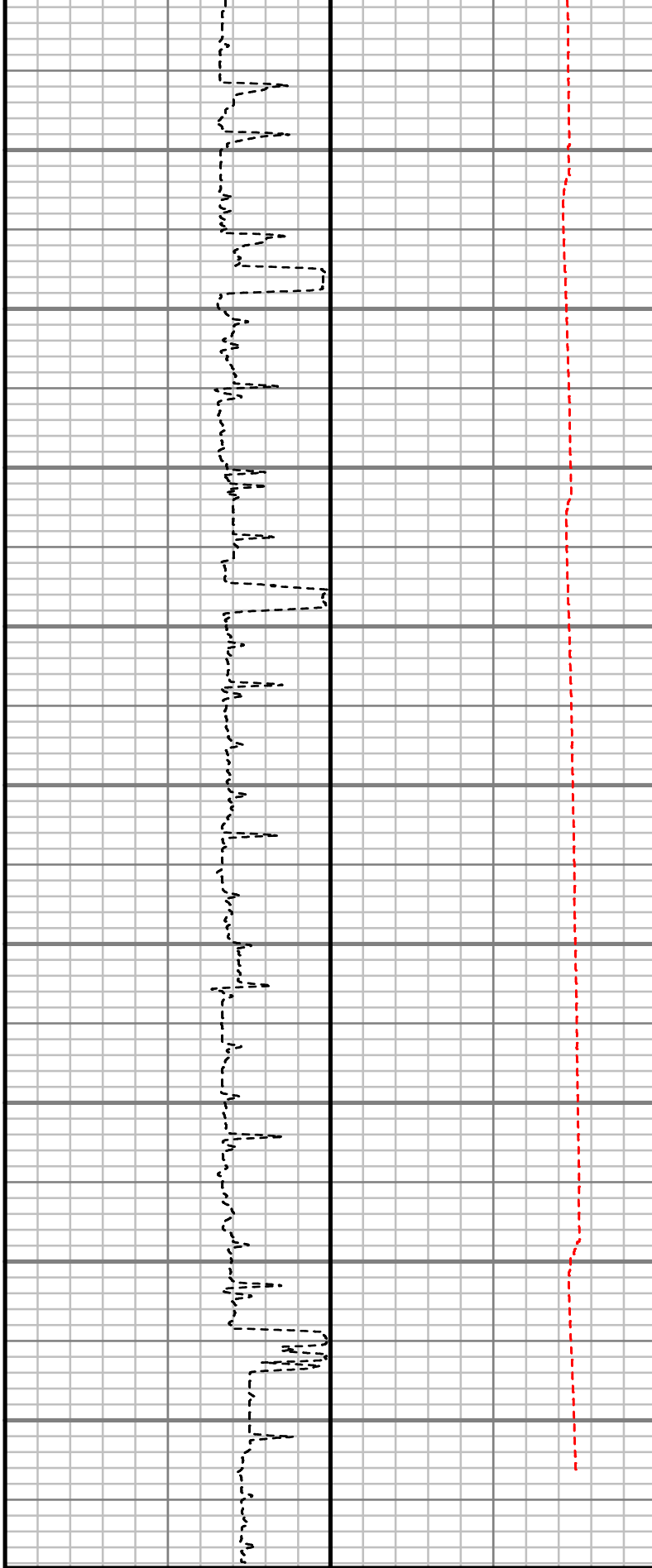
11500





Merge Gamma Ray (GR)		
0	Unit = aapi	200

MEASURED DEPTH
1:1200 (ft)



Rate of Penetration (ROP)		
1000	Unit = ft/hr	0

Tool Temperature (T-TEMP)		
0	Unit = °F	300

Comments

1" = 100' FEET MD