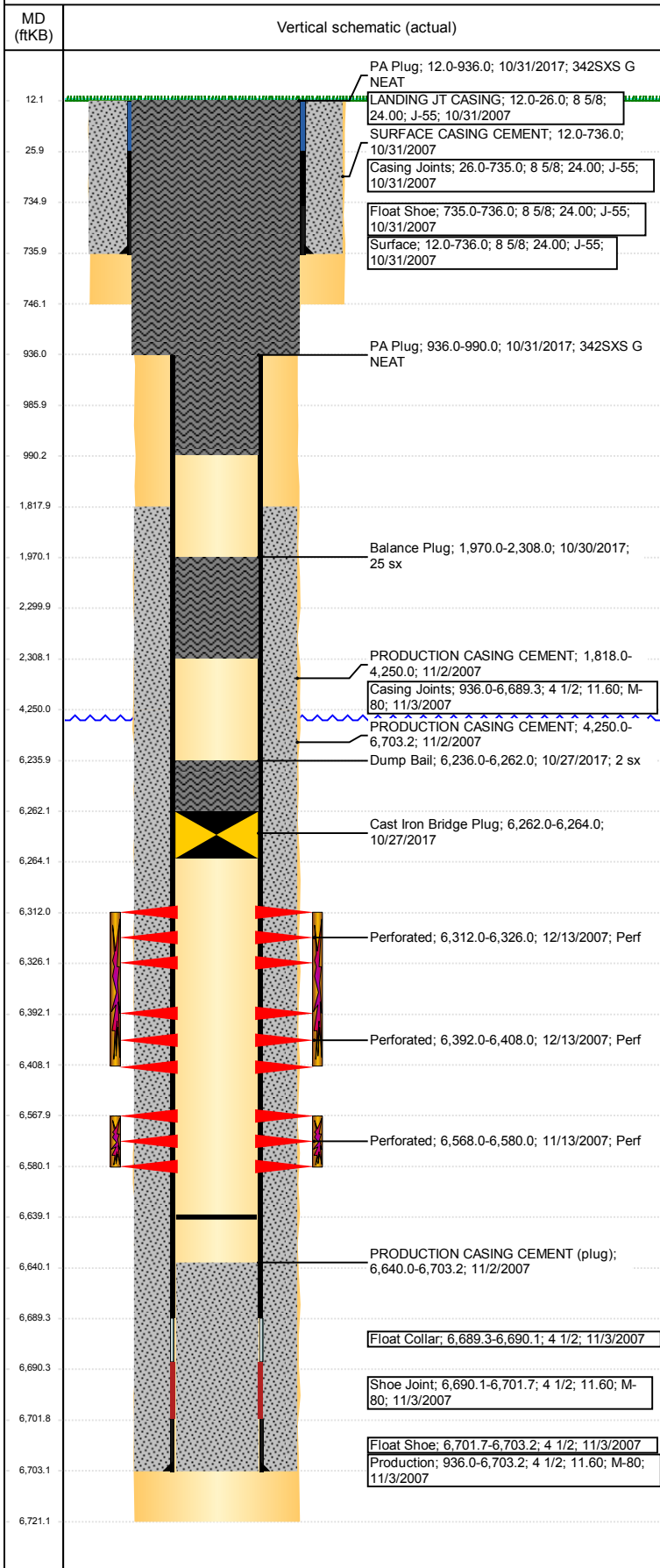


Well Name: 70 RANCH USX BB23-02

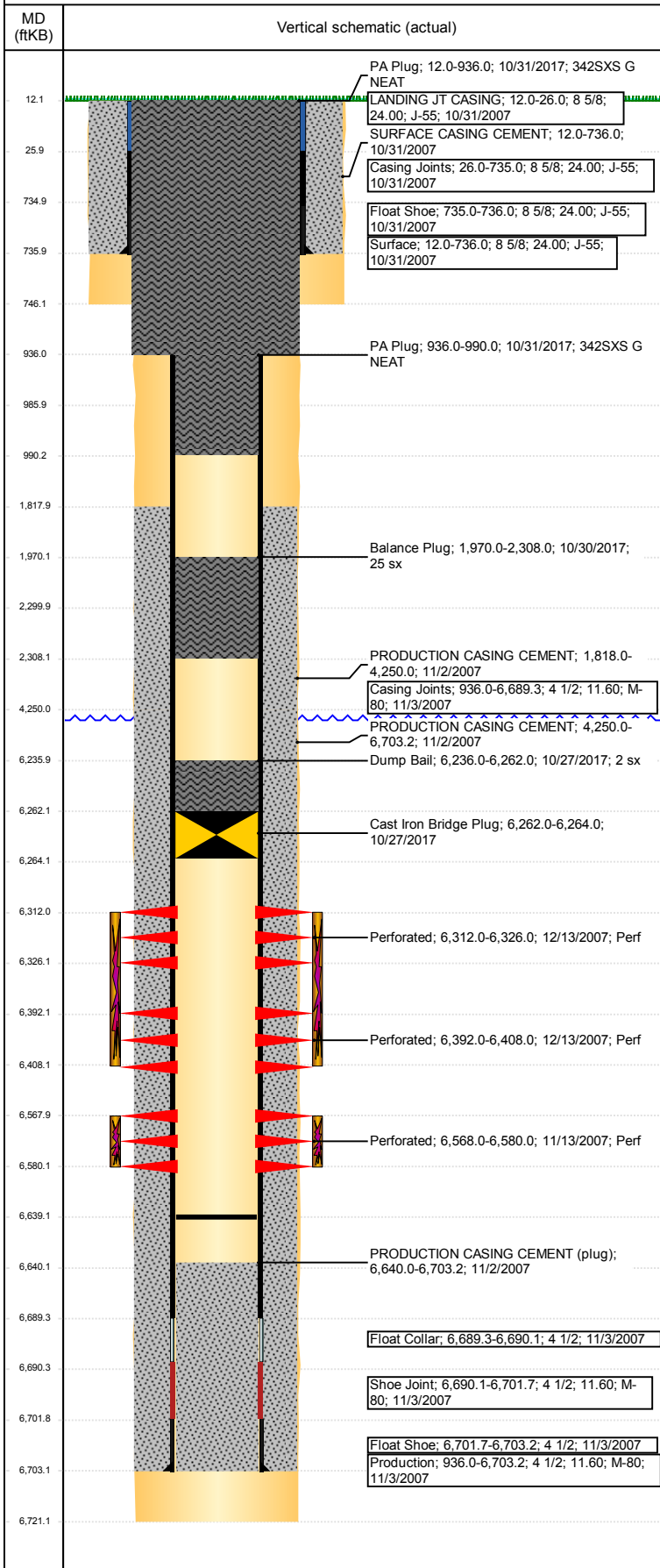
VERTICAL - ORIGINAL HOLE, 12/19/2017 8:31:23 AM



Well Header							
API	05-123-26066	Business Unit	DJ BASIN	District	15	Well Config	VERTICAL
Original KB Elevation (ft)	4,623	KB - GL / MSL (ftKB)	12.00	Spud Date	10/30/2007	P & A Date	10/31/2017
Comment							
Directions To Well RD 68 & RD 67. EAST 2/10. SOUTH 2.5 MILES. SOUTH EAST 2/10. SOUTH 1.1 MILES. EAST 4/10. SOUTH 2.5 MILES. SOUTH 1/10 INTO.							
Congressional Location							
Quarter 3	Quarter 4	Section	Township	Twntshp N/S Dir	Range	Range E/W Dir	
NW	NE	23	5	N	63	W	
Bottom Hole Location							
North-South Distance (ft)		From N or S Line		East-West Distance (ft)		From E or W Line	
Plug Back Total Depths							
Date	Depth (ftKB)	Method		Com			
11/2/2007	6,689.1	TAG		TOP OF FLOAT COLLAR			
11/13/2007	6,640.0	TAG		DEPTH LOGGER ON CBL			
2/13/2008	6,639.0	TAG		CHASE PLUG AND CLEAN OUT			
8/2/2011	6,639.0	TAG		SLICK LINE.			
Wellbore Sections							
Section Des		Size (in)	Act Top, MD (ftKB)	Act Btm, MD (ftKB)			
SURFACE		12 1/4	12	746			
PRODUCTION		7 7/8	746	6,721			
Zone Statuses							
Zone Name	Status Date	Status	Fluid Type	Job	Prod Method		
NIOBRARA	1/29/2008	PR		DRILLING/CO...			
NIOBRARA	10/27/2017	P&A		ABANDON WE...			
CODELL	1/29/2008	PR		DRILLING/CO...			
CODELL	10/27/2017	P&A		ABANDON WE...			
Casing Strings							
Surface, 736.0ftKB							
Casing Description	Run Date	OD (in)	Wt/Len (l...)	Grade	Top, MD (ft...)	MD (ftKB)	
Surface	10/31/2007	8 5/8	24.00	J-55	12.0	736.0	
Production, 6,703.2ftKB							
Casing Description	Run Date	OD (in)	Wt/Len (l...)	Grade	Top, MD (ft...)	MD (ftKB)	
Production	11/3/2007	4 1/2	11.60	M-80	12.0	6,703.2	
Cement							
Description	Top Depth (ftKB)	Bottom Depth (ftKB)					
SURFACE CASING CEMENT	12.0	736.0					
Production	Top Depth (ftKB)	Bottom Depth (ftKB)					
PRODUCTION CASING CEMENT	1,818.0	4,250.0					
Description	Top Depth (ftKB)	Bottom Depth (ftKB)					
PRODUCTION CASING CEMENT	4,250.0	6,703.2					
Description	Top Depth (ftKB)	Bottom Depth (ftKB)					
Dump Bail	6,236.0	6,262.0					
Description	Top Depth (ftKB)	Bottom Depth (ftKB)					
Balance Plug	1,970.0	2,300.0					
Description	Top Depth (ftKB)	Bottom Depth (ftKB)					
Balance Plug	936.0	986.0					
Description	Top Depth (ftKB)	Bottom Depth (ftKB)					
Shoe Plug	12.0	936.0					
Description	Top Depth (ftKB)	Bottom Depth (ftKB)					
Dump Bail	6,236.0	6,262.0					
Description	Top Depth (ftKB)	Bottom Depth (ftKB)					
Balance Plug	1,970.0	2,308.0					
Description	Top Depth (ftKB)	Bottom Depth (ftKB)					
PA Plug	936.0	990.0					
Description	Top Depth (ftKB)	Bottom Depth (ftKB)					
PA Plug	12.0	936.0					
Tubing Strings							
Tubing Description	Run Date	String ...	ID (in)	Wt (lb/ft)	Grade	Len (ft)	Set De...
Tubing - Production	5/23/2011	2 3/8	2.00	4.70	J-55	6,546.00	00
Tubing Components							
Item Des	OD (in)	Wt (lb/ft)	Grade	Jts	Len (ft)	Btm (ftKB)	Btm (TVD) (ftKB)
EUE 8rd Tubing	2 3/8	4.70	J-55	211	6,545.00	6,557.0	
Pump Seating Nipple	2 3/8			1	0.50	6,557.5	

Well Name: 70 RANCH USX BB23-02

VERTICAL - ORIGINAL HOLE, 12/19/2017 8:31:23 AM



Tubing Components							
Item Des	OD (in)	Wt (lb/ft)	Grade	Jts	Len (ft)	Btm (ftKB)	Btm (TVD) (ftKB)
Notched collar	2 3/8			1	0.50	6,558.0	
Tubing Description	Run Date	String ...	ID (in)	Wt (lb/ft)	Grade	Len (ft)	Set De...
Tubing - Production	8/3/2011	2 3/8	2.00	4.70	J-55	6,545.03	

Tubing Components							
Item Des	OD (in)	Wt (lb/ft)	Grade	Jts	Len (ft)	Btm (ftKB)	Btm (TVD) (ftKB)
EUE 8rd Tubing	2 3/8	4.70	J-55	211	6,543.53	6,555.5	
Seal Nipple	2 3/8	4.70	N-80	1	1.20	6,556.7	
Notched collar	2 3/8	4.70	J-55	1	0.30	6,557.0	

Other In Hole				
Run Date	Des	OD (in)	Top (ftKB)	Btm (ftKB)
10/27/2017	Cast Iron Bridge Plug	3.99	6,262.0	6,264.0

Logs			
Date	Type	Top, MD (ftKB)	Btm, MD (ftKB)
11/2/2007	COMPENSATED DENSITY	2,550.0	6,694.0
11/2/2007	INDUCTION	2,550.0	6,694.0
11/13/2007	CEMENT BOND	1,600.0	6,640.0
10/24/2017	GYRO	12.0	6,500.0

Perforation Data					
Linked Zone	Bnch/St g	Sum of Entered Shot Total	Top (ftKB)	Btm (ftKB)	Date
NIOBRARA, ORIGINAL HOLE		56	6,312.00	6,326.00	12/13/2007
NIOBRARA, ORIGINAL HOLE		64	6,392.00	6,408.00	12/13/2007
CODELL, ORIGINAL HOLE		48	6,568.00	6,580.00	11/13/2007
Total (Sum)		168			

Stimulation Intervals		
Start Date	Primary Job Type	
12/13/2007	DRILLING/COMPLETION - ORIGINAL	
Technical Result	Tech Result Details	Tech Result Note
Comment		

Stimulation Intervals		
Start Date	Primary Job Type	
12/13/2007	DRILLING/COMPLETION - ORIGINAL	
Technical Result	Tech Result Details	Tech Result Note
Comment		