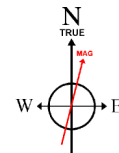


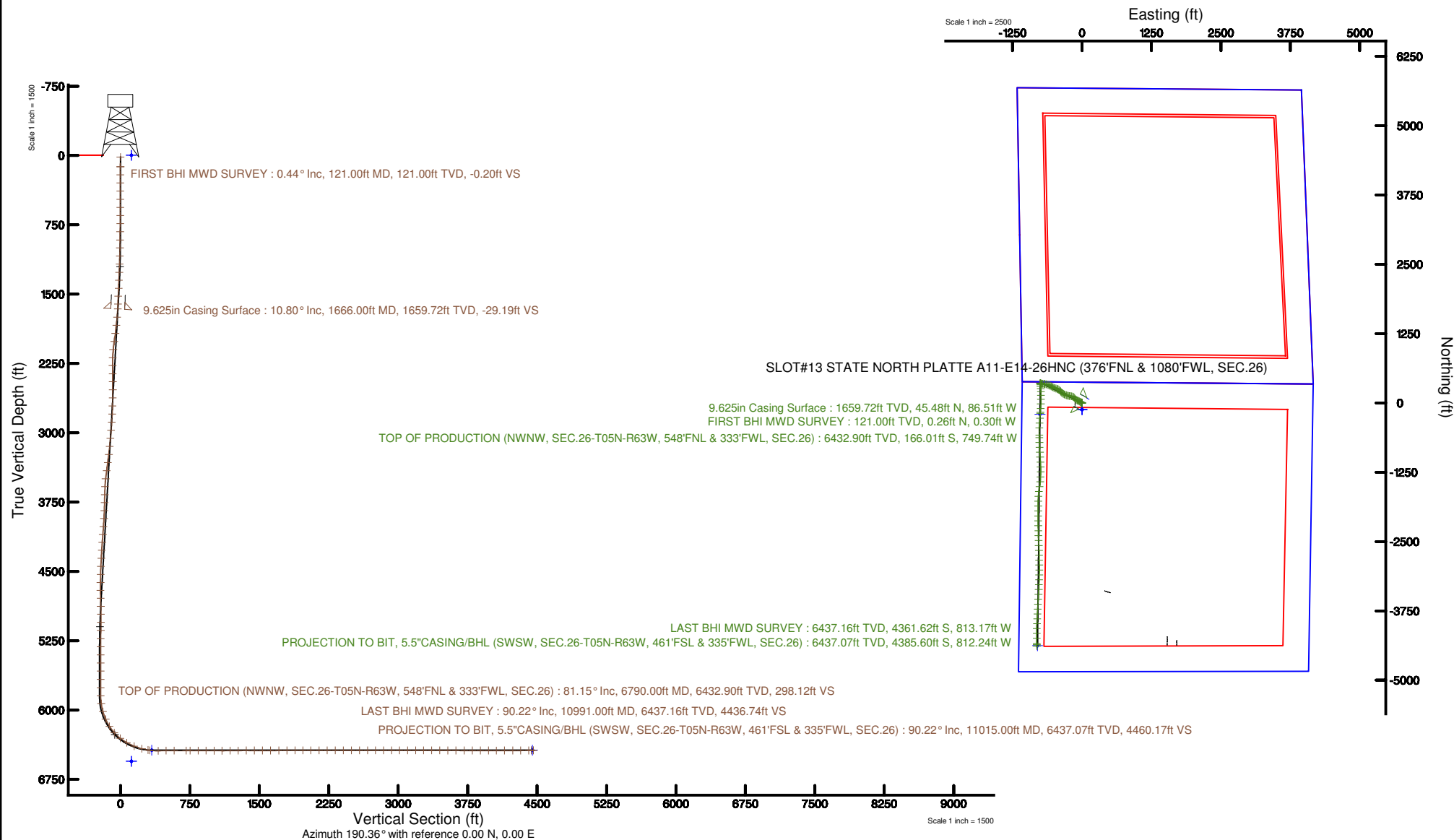
Location:	COLORADO	Slot:	SLOT#13 STATE NORTH PLATTE A11-E14-26HNC (376'FNL & 1080'FWL, SEC.26)
Field:	WELD COUNTY	Well:	STATE NORTH PLATTE A11-E14-26HNC
Facility:	SEC.26-T5N-R63W	Wellbore:	STATE NORTH PLATTE A11-E14-26HNC PWB

File reference path is X:\SITE NORTH\PLATE A11 E14-308NC.FWP (REV C-3)	Grid System is NAD83 North Carolina SP. Northern Zone 2011 US feet
The vertical depths are referenced to XTIDESE (1) = 456251.17 (2002) (2002)	* = Indicate was not recorded from a different geographic datum
Measured depths are referenced to XTIDESE (1) = 456242.14 + 1792.0 (2002)	North-South: True north
XTIDESE (1) = 456251.17 + 1792.00 = Mean Sea Level 4583 feet	Scale: True distance
Mean Sea Level is: Mean low (A) Set: SCLT931 X:\SITE NORTH\PLATE A11 E14-308NC.FWP & 1308FWP, DEC.2002 is feet	Depths are in feet
Coordinates are in feet referenced to GRS	Created by computer on 2017-10-11
	Databases: Demo



BGGM (1900.0 to 2019.0) Dip: 66.89° Field: 52385.2 nT  
Magnetic North is 8.16 degrees East of True North (at 9/27/2017)

To correct azimuth from Magnetic to True add 8.16 degrees





# Actual Wellpath Report

STATE NORTH PLATTE A11-E14-26HNC AWP

Page 1 of 8



REFERENCE WELLPATH IDENTIFICATION			
Operator	BONANZA CREEK OIL COMPANY	Slot	SLOT#13 STATE NORTH PLATTE A11-E14-26HNC (376'FNL & 1080'FWL, SEC.26)
Area	COLORADO	Well	STATE NORTH PLATTE A11-E14-26HNC
Field	WELD COUNTY	Wellbore	STATE NORTH PLATTE A11-E14-26HNC AWP
Facility	SEC.26-T5N-R63W		

REPORT SETUP INFORMATION			
Projection System	NAD83 / Lambert Colorado SP, Northern Zone (501), US feet	Software System	WellArchitect® 5.0
North Reference	True	User	Cantryat
Scale	0.999959	Report Generated	12/11/2017 at 10:09:50 AM
Convergence at slot	0.71° East	Database/Source file	Denver/STATE_NORTH_PLATTE_A11-E14-26HNC_AWP.xml

WELLPATH LOCATION						
	Local coordinates		Grid coordinates		Geographic coordinates	
	North[ft]	East[ft]	Easting[US ft]	Northing[US ft]	Latitude	Longitude
Slot Location	79.38	125.21	3304075.06	1381855.45	40°22'35.248"N	104°24'30.818"W
Facility Reference Pt			3303950.84	1381774.54	40°22'34.464"N	104°24'32.436"W
Field Reference Pt			3224525.77	1254425.87	40°01'44.400"N	104°41'53.556"W

WELLPATH DATUM			
Calculation method	Minimum curvature	XTREME 19 (4567'GL + 17'KB) (RKB) to Facility Vertical Datum	4583.00ft
Horizontal Reference Pt	Slot	XTREME 19 (4567'GL + 17'KB) (RKB) to Mean Sea Level	4583.00ft
Vertical Reference Pt	XTREME 19 (4567'GL + 17'KB) (RKB)	XTREME 19 (4567'GL + 17'KB) (RKB) to Mud Line at Slot (SLOT#13 STATE NORTH PLATTE A11-E14-26HNC (376'FNL & 1080'FWL, SEC.26))	4583.00ft
MD Reference Pt	XTREME 19 (4567'GL + 17'KB) (RKB)	Section Origin	N 0.00, E 0.00 ft
Field Vertical Reference	Mean Sea Level	Section Azimuth	190.36°



# Actual Wellpath Report

STATE NORTH PLATTE A11-E14-26HNC AWP

Page 2 of 8



REFERENCE WELLPATH IDENTIFICATION			
Operator	BONANZA CREEK OIL COMPANY	Slot	SLOT#13 STATE NORTH PLATTE A11-E14-26HNC (376'FNL & 1080'FWL, SEC.26)
Area	COLORADO	Well	STATE NORTH PLATTE A11-E14-26HNC
Field	WELD COUNTY	Wellbore	STATE NORTH PLATTE A11-E14-26HNC AWB
Facility	SEC.26-T5N-R63W		

WELLPATH DATA (128 stations) † = interpolated/extrapolated station										
MD [ft]	Inclination [°]	Azimuth [°]	TVD [ft]	Vert Sect [ft]	North [ft]	East [ft]	Latitude	Longitude	DLS [°/100ft]	Comments
0.00†	0.000	310.790	0.00	0.00	0.00	0.00	40°22'35.248"N	104°24'30.818"W	0.00	
17.00	0.000	310.790	17.00	0.00	0.00	0.00	40°22'35.248"N	104°24'30.818"W	0.00	
121.00	0.440	310.790	121.00	-0.20	0.26	-0.30	40°22'35.251"N	104°24'30.822"W	0.42	FIRST BHI MWD SURVEY
209.00	0.250	312.560	209.00	-0.48	0.61	-0.70	40°22'35.254"N	104°24'30.827"W	0.22	
296.00	0.360	277.800	296.00	-0.56	0.78	-1.11	40°22'35.256"N	104°24'30.833"W	0.24	
384.00	0.330	298.720	383.99	-0.63	0.94	-1.61	40°22'35.258"N	104°24'30.839"W	0.15	
473.00	0.470	314.530	472.99	-0.92	1.32	-2.09	40°22'35.261"N	104°24'30.845"W	0.20	
562.00	0.660	317.920	561.99	-1.44	1.95	-2.70	40°22'35.268"N	104°24'30.853"W	0.22	
649.00	0.470	307.450	648.98	-1.90	2.54	-3.31	40°22'35.274"N	104°24'30.861"W	0.25	
737.00	0.850	294.010	736.98	-2.22	3.03	-4.20	40°22'35.278"N	104°24'30.872"W	0.46	
824.00	0.840	309.750	823.97	-2.69	3.70	-5.28	40°22'35.285"N	104°24'30.886"W	0.27	
914.00	1.580	303.410	913.95	-3.50	4.80	-6.82	40°22'35.296"N	104°24'30.906"W	0.83	
1000.00	3.040	303.210	999.88	-4.85	6.70	-9.72	40°22'35.315"N	104°24'30.944"W	1.70	
1087.00	4.410	302.430	1086.69	-7.00	9.76	-14.47	40°22'35.345"N	104°24'31.005"W	1.58	
1176.00	5.580	297.760	1175.35	-9.58	13.61	-21.19	40°22'35.383"N	104°24'31.092"W	1.39	
1266.00	6.660	300.220	1264.84	-12.66	18.28	-29.57	40°22'35.429"N	104°24'31.200"W	1.23	
1352.00	7.790	298.770	1350.15	-16.20	23.59	-38.99	40°22'35.482"N	104°24'31.322"W	1.33	
1440.00	8.860	294.240	1437.22	-19.71	29.24	-50.40	40°22'35.537"N	104°24'31.469"W	1.43	
1526.00	10.140	293.520	1522.04	-23.02	34.98	-63.38	40°22'35.594"N	104°24'31.637"W	1.49	
1612.00	10.520	293.580	1606.65	-26.54	41.15	-77.51	40°22'35.655"N	104°24'31.820"W	0.44	
1757.00	11.400	304.540	1749.02	-35.44	54.57	-101.45	40°22'35.788"N	104°24'32.129"W	1.56	
1846.00	11.870	313.280	1836.20	-44.01	65.83	-115.36	40°22'35.899"N	104°24'32.309"W	2.05	
1936.00	12.020	318.230	1924.25	-54.80	79.17	-128.34	40°22'36.031"N	104°24'32.477"W	1.15	
2025.00	12.200	322.010	2011.27	-66.74	93.49	-140.31	40°22'36.172"N	104°24'32.631"W	0.91	
2115.00	12.510	305.890	2099.21	-77.26	106.70	-154.06	40°22'36.303"N	104°24'32.809"W	3.84	
2204.00	12.450	291.510	2186.13	-83.27	115.87	-170.80	40°22'36.393"N	104°24'33.025"W	3.48	
2293.00	12.320	279.630	2273.07	-85.01	120.98	-189.09	40°22'36.444"N	104°24'33.261"W	2.86	
2383.00	12.290	275.440	2361.01	-84.06	123.50	-208.09	40°22'36.469"N	104°24'33.507"W	0.99	
2472.00	12.210	277.920	2447.98	-82.85	125.69	-226.84	40°22'36.490"N	104°24'33.749"W	0.60	
2561.00	12.340	282.110	2534.95	-82.74	128.98	-245.46	40°22'36.523"N	104°24'33.990"W	1.01	



# Actual Wellpath Report

STATE NORTH PLATTE A11-E14-26HNC AWP

Page 3 of 8



## REFERENCE WELLPATH IDENTIFICATION

Operator	BONANZA CREEK OIL COMPANY	Slot	SLOT#13 STATE NORTH PLATTE A11-E14-26HNC (376'FNL & 1080'FWL, SEC.26)
Area	COLORADO	Well	STATE NORTH PLATTE A11-E14-26HNC
Field	WELD COUNTY	Wellbore	STATE NORTH PLATTE A11-E14-26HNC AWB
Facility	SEC.26-T5N-R63W		

## WELLPATH DATA (128 stations)

MD [ft]	Inclination [°]	Azimuth [°]	TVD [ft]	Vert Sect [ft]	North [ft]	East [ft]	Latitude	Longitude	DLS [°/100ft]	Comments
2651.00	12.280	284.380	2622.88	-83.70	133.38	-264.14	40°22'36.566"N	104°24'34.231"W	0.54	
2740.00	12.860	288.860	2709.75	-85.83	138.93	-282.68	40°22'36.621"N	104°24'34.471"W	1.27	
2829.00	12.360	292.730	2796.60	-89.34	145.81	-300.84	40°22'36.689"N	104°24'34.705"W	1.10	
2919.00	12.810	296.890	2884.44	-94.24	154.05	-318.62	40°22'36.771"N	104°24'34.935"W	1.12	
3008.00	12.330	301.570	2971.31	-100.49	163.48	-335.52	40°22'36.864"N	104°24'35.153"W	1.26	
3098.00	11.080	306.870	3059.44	-107.82	173.70	-350.62	40°22'36.965"N	104°24'35.349"W	1.83	
3187.00	11.300	310.310	3146.75	-115.99	184.48	-364.12	40°22'37.071"N	104°24'35.523"W	0.79	
3276.00	10.420	317.970	3234.16	-125.26	196.10	-376.15	40°22'37.186"N	104°24'35.678"W	1.90	
3365.00	12.660	323.410	3321.36	-136.83	209.91	-387.36	40°22'37.323"N	104°24'35.823"W	2.80	
3455.00	12.810	317.160	3409.15	-149.54	225.14	-400.02	40°22'37.473"N	104°24'35.987"W	1.54	
3545.00	12.840	305.420	3496.92	-159.75	238.26	-414.96	40°22'37.603"N	104°24'36.180"W	2.89	
3634.00	12.810	293.120	3583.71	-166.12	247.86	-432.09	40°22'37.698"N	104°24'36.401"W	3.06	
3722.00	12.850	285.720	3669.52	-169.19	254.35	-450.49	40°22'37.762"N	104°24'36.639"W	1.87	
3810.00	12.910	287.390	3755.31	-171.31	259.94	-469.29	40°22'37.817"N	104°24'36.882"W	0.43	
3899.00	12.940	288.940	3842.05	-174.01	266.14	-488.20	40°22'37.878"N	104°24'37.126"W	0.39	
3988.00	12.830	293.150	3928.82	-177.69	273.26	-506.71	40°22'37.949"N	104°24'37.365"W	1.06	
4076.00	12.640	300.420	4014.66	-183.16	281.98	-524.00	40°22'38.035"N	104°24'37.589"W	1.83	
4164.00	12.830	300.430	4100.49	-189.81	291.80	-540.73	40°22'38.132"N	104°24'37.805"W	0.22	
4251.00	12.930	299.110	4185.30	-196.25	301.43	-557.56	40°22'38.227"N	104°24'38.022"W	0.36	
4339.00	12.790	295.010	4271.10	-201.88	310.34	-574.99	40°22'38.315"N	104°24'38.248"W	1.05	
4429.00	12.630	294.050	4358.89	-206.73	318.56	-593.00	40°22'38.396"N	104°24'38.480"W	0.29	
4518.00	12.750	291.470	4445.72	-210.93	326.12	-611.03	40°22'38.471"N	104°24'38.713"W	0.65	
4608.00	12.680	285.900	4533.51	-213.79	332.46	-629.77	40°22'38.534"N	104°24'38.956"W	1.36	
4697.00	12.810	282.770	4620.32	-215.15	337.32	-648.79	40°22'38.582"N	104°24'39.201"W	0.79	
4784.00	12.950	279.000	4705.14	-215.33	340.97	-667.82	40°22'38.618"N	104°24'39.447"W	0.98	
4872.00	12.810	274.660	4790.92	-214.12	343.31	-687.29	40°22'38.641"N	104°24'39.699"W	1.11	
4960.00	9.650	271.690	4877.23	-212.04	344.32	-704.39	40°22'38.651"N	104°24'39.920"W	3.65	
5046.00	8.140	275.670	4962.19	-210.46	345.13	-717.65	40°22'38.659"N	104°24'40.091"W	1.90	
5135.00	7.000	286.100	5050.42	-210.49	347.26	-729.13	40°22'38.680"N	104°24'40.239"W	2.00	
5224.00	5.220	294.210	5138.91	-212.00	350.43	-738.04	40°22'38.711"N	104°24'40.354"W	2.22	



# Actual Wellpath Report

STATE NORTH PLATTE A11-E14-26HNC AWP

Page 4 of 8



## REFERENCE WELLPATH IDENTIFICATION

Operator	BONANZA CREEK OIL COMPANY	Slot	SLOT#13 STATE NORTH PLATTE A11-E14-26HNC (376'FNL & 1080'FWL, SEC.26)
Area	COLORADO	Well	STATE NORTH PLATTE A11-E14-26HNC
Field	WELD COUNTY	Wellbore	STATE NORTH PLATTE A11-E14-26HNC AWP
Facility	SEC.26-T5N-R63W		

## WELLPATH DATA (128 stations) † = interpolated/extrapolated station

MD [ft]	Inclination [°]	Azimuth [°]	TVD [ft]	Vert Sect [ft]	North [ft]	East [ft]	Latitude	Longitude	DLS [°/100ft]	Comments
5313.00	3.510	294.880	5227.65	-213.65	353.23	-744.20	40°22'38.739"N	104°24'40.434"W	1.92	
5401.00	1.750	281.140	5315.55	-214.34	354.63	-747.96	40°22'38.753"N	104°24'40.483"W	2.11	
5488.00	0.740	261.490	5402.53	-214.18	354.80	-749.82	40°22'38.754"N	104°24'40.507"W	1.24	
5577.00	0.310	166.420	5491.53	-213.77	354.48	-750.34	40°22'38.751"N	104°24'40.513"W	0.93	
5665.00	0.040	144.060	5579.53	-213.54	354.22	-750.26	40°22'38.749"N	104°24'40.512"W	0.31	
5754.00	0.040	128.890	5668.53	-213.50	354.18	-750.22	40°22'38.748"N	104°24'40.512"W	0.01	
5843.00	0.030	317.650	5757.53	-213.50	354.18	-750.21	40°22'38.748"N	104°24'40.512"W	0.08	
5932.00	0.130	90.600	5846.53	-213.53	354.19	-750.13	40°22'38.748"N	104°24'40.511"W	0.17	
6018.00	8.840	177.080	5932.19	-207.10	347.58	-749.69	40°22'38.683"N	104°24'40.505"W	10.27	
6104.00	15.870	178.000	6016.14	-189.16	329.21	-748.94	40°22'38.501"N	104°24'40.495"W	8.18	
6193.00	24.260	173.840	6099.67	-159.69	298.81	-746.55	40°22'38.201"N	104°24'40.464"W	9.56	
6281.00	34.260	173.820	6176.35	-118.51	256.10	-741.93	40°22'37.779"N	104°24'40.405"W	11.36	
6369.00	41.950	179.580	6245.56	-65.78	201.96	-739.05	40°22'37.244"N	104°24'40.367"W	9.62	
6458.00	52.190	180.930	6306.10	-1.70	136.89	-739.40	40°22'36.601"N	104°24'40.372"W	11.56	
6544.00	61.030	180.470	6353.38	69.02	65.16	-740.26	40°22'35.892"N	104°24'40.383"W	10.29	
6633.00	68.020	181.260	6391.64	148.21	-15.13	-741.49	40°22'35.099"N	104°24'40.399"W	7.89	
6722.00	75.760	183.670	6419.29	231.94	-99.56	-745.16	40°22'34.264"N	104°24'40.446"W	9.07	
6790.00†	81.146	184.200	6432.90	298.12	-166.01	-749.74	40°22'33.608"N	104°24'40.505"W	7.96	TOP OF PRODUCTION (NWNW, SEC.26-T05N-R63W, 548'FNL & 333'FWL, SEC.26)
6811.00	82.810	184.360	6435.83	318.80	-186.74	-751.29	40°22'33.403"N	104°24'40.525"W	7.96	
6900.00	91.140	183.990	6440.52	407.08	-275.30	-757.75	40°22'32.528"N	104°24'40.609"W	9.37	
6986.00	90.220	183.730	6439.50	492.52	-361.10	-763.54	40°22'31.680"N	104°24'40.684"W	1.11	
7075.00	90.120	181.990	6439.23	580.75	-449.99	-767.98	40°22'30.802"N	104°24'40.741"W	1.96	
7206.00	89.880	179.170	6439.23	709.84	-580.97	-769.31	40°22'29.507"N	104°24'40.758"W	2.16	
7250.00	90.030	178.470	6439.27	752.95	-624.96	-768.40	40°22'29.073"N	104°24'40.746"W	1.63	
7338.00	89.970	178.780	6439.27	839.11	-712.93	-766.29	40°22'28.203"N	104°24'40.719"W	0.36	
7426.00	89.690	177.450	6439.53	925.10	-800.88	-763.40	40°22'27.334"N	104°24'40.682"W	1.54	
7515.00	89.910	176.850	6439.84	1011.75	-889.77	-758.97	40°22'26.456"N	104°24'40.624"W	0.72	
7603.00	89.820	176.310	6440.05	1097.21	-977.61	-753.72	40°22'25.588"N	104°24'40.557"W	0.62	
7692.00	90.860	177.300	6439.52	1183.73	-1066.47	-748.76	40°22'24.710"N	104°24'40.492"W	1.61	
7781.00	90.950	178.940	6438.11	1270.69	-1155.41	-745.84	40°22'23.831"N	104°24'40.455"W	1.85	



# Actual Wellpath Report

STATE NORTH PLATTE A11-E14-26HNC AWP

Page 5 of 8



REFERENCE WELLPATH IDENTIFICATION			
Operator	BONANZA CREEK OIL COMPANY	Slot	SLOT#13 STATE NORTH PLATTE A11-E14-26HNC (376'FNL & 1080'FWL, SEC.26)
Area	COLORADO	Well	STATE NORTH PLATTE A11-E14-26HNC
Field	WELD COUNTY	Wellbore	STATE NORTH PLATTE A11-E14-26HNC AWB
Facility	SEC.26-T5N-R63W		

WELLPATH DATA (128 stations)										
MD [ft]	Inclination [°]	Azimuth [°]	TVD [ft]	Vert Sect [ft]	North [ft]	East [ft]	Latitude	Longitude	DLS [°/100ft]	Comments
7870.00	89.820	180.170	6437.52	1358.11	-1244.40	-745.15	40°22'22.952"N	104°24'40.446"W	1.88	
7959.00	89.940	181.950	6437.70	1445.94	-1333.38	-746.80	40°22'22.072"N	104°24'40.467"W	2.00	
8047.00	90.090	185.500	6437.68	1533.33	-1421.18	-752.51	40°22'21.205"N	104°24'40.541"W	4.04	
8135.00	90.000	189.280	6437.61	1621.20	-1508.44	-763.83	40°22'20.342"N	104°24'40.687"W	4.30	
8225.00	90.120	187.540	6437.51	1711.14	-1597.46	-776.99	40°22'19.463"N	104°24'40.857"W	1.94	
8313.00	90.180	183.290	6437.28	1798.80	-1685.05	-785.29	40°22'18.597"N	104°24'40.964"W	4.83	
8400.00	90.060	180.130	6437.10	1884.80	-1772.00	-787.89	40°22'17.738"N	104°24'40.998"W	3.63	
8488.00	90.220	179.980	6436.89	1971.38	-1860.00	-787.97	40°22'16.868"N	104°24'40.999"W	0.25	
8575.00	90.150	180.030	6436.61	2056.96	-1947.00	-787.98	40°22'16.009"N	104°24'40.999"W	0.10	
8665.00	90.060	180.300	6436.44	2145.54	-2037.00	-788.24	40°22'15.119"N	104°24'41.002"W	0.32	
8754.00	90.030	179.990	6436.37	2233.13	-2126.00	-788.47	40°22'14.240"N	104°24'41.005"W	0.35	
8843.00	90.000	179.460	6436.35	2320.60	-2215.00	-788.04	40°22'13.360"N	104°24'40.999"W	0.60	
8933.00	89.970	178.890	6436.37	2408.89	-2304.99	-786.74	40°22'12.471"N	104°24'40.983"W	0.63	
9020.00	90.030	178.650	6436.37	2494.12	-2391.97	-784.88	40°22'11.612"N	104°24'40.958"W	0.28	
9110.00	90.030	178.090	6436.32	2582.15	-2481.93	-782.32	40°22'10.723"N	104°24'40.925"W	0.62	
9199.00	90.030	177.310	6436.28	2668.99	-2570.86	-778.74	40°22'09.844"N	104°24'40.879"W	0.88	
9286.00	89.910	177.430	6436.32	2753.76	-2657.77	-774.75	40°22'08.985"N	104°24'40.828"W	0.20	
9375.00	89.910	179.580	6436.46	2840.86	-2746.73	-772.43	40°22'08.106"N	104°24'40.798"W	2.42	
9464.00	89.850	179.880	6436.65	2928.33	-2835.73	-772.01	40°22'07.226"N	104°24'40.792"W	0.34	
9552.00	89.970	178.380	6436.79	3014.64	-2923.72	-770.67	40°22'06.357"N	104°24'40.775"W	1.71	
9641.00	89.970	180.460	6436.83	3102.02	-3012.71	-769.77	40°22'05.478"N	104°24'40.763"W	2.34	
9729.00	90.000	181.500	6436.86	3188.84	-3100.69	-771.28	40°22'04.608"N	104°24'40.783"W	1.18	
9816.00	90.000	181.330	6436.86	3274.79	-3187.67	-773.43	40°22'03.749"N	104°24'40.810"W	0.20	
9904.00	89.820	182.340	6437.00	3361.81	-3275.62	-776.25	40°22'02.880"N	104°24'40.847"W	1.17	
9992.00	89.940	182.280	6437.18	3448.94	-3363.55	-779.79	40°22'02.011"N	104°24'40.892"W	0.15	
10079.00	89.850	182.700	6437.34	3535.13	-3450.47	-783.57	40°22'01.152"N	104°24'40.941"W	0.49	
10168.00	89.940	183.430	6437.50	3623.40	-3539.34	-788.33	40°22'00.274"N	104°24'41.003"W	0.83	
10258.00	89.910	182.680	6437.62	3712.67	-3629.21	-793.13	40°21'59.386"N	104°24'41.065"W	0.83	
10346.00	89.970	183.490	6437.71	3799.96	-3717.08	-797.86	40°21'58.517"N	104°24'41.126"W	0.92	
10434.00	89.970	183.310	6437.76	3887.32	-3804.93	-803.08	40°21'57.649"N	104°24'41.193"W	0.20	



# Actual Wellpath Report

STATE NORTH PLATTE A11-E14-26HNC AWP

Page 6 of 8



REFERENCE WELLPATH IDENTIFICATION			
Operator	BONANZA CREEK OIL COMPANY	Slot	SLOT#13 STATE NORTH PLATTE A11-E14-26HNC (376'FNL & 1080'FWL, SEC.26)
Area	COLORADO	Well	STATE NORTH PLATTE A11-E14-26HNC
Field	WELD COUNTY	Wellbore	STATE NORTH PLATTE A11-E14-26HNC AWB
Facility	SEC.26-T5N-R63W		

WELLPATH DATA (128 stations)										
MD [ft]	Inclination [°]	Azimuth [°]	TVD [ft]	Vert Sect [ft]	North [ft]	East [ft]	Latitude	Longitude	DLS [°/100ft]	Comments
10522.00	89.910	182.670	6437.85	3974.59	-3892.81	-807.67	40°21'56.781"N	104°24'41.252"W	0.73	
10609.00	90.000	182.490	6437.92	4060.79	-3979.72	-811.59	40°21'55.922"N	104°24'41.303"W	0.23	
10698.00	90.030	181.500	6437.90	4148.84	-4068.66	-814.69	40°21'55.043"N	104°24'41.343"W	1.11	
10787.00	89.970	180.090	6437.90	4236.60	-4157.65	-815.92	40°21'54.164"N	104°24'41.359"W	1.59	
10875.00	90.340	179.720	6437.66	4323.14	-4245.65	-815.78	40°21'53.294"N	104°24'41.357"W	0.59	
10963.00	90.180	178.170	6437.26	4409.39	-4333.63	-814.16	40°21'52.425"N	104°24'41.336"W	1.77	
10991.00	90.220	177.780	6437.16	4436.74	-4361.62	-813.17	40°21'52.148"N	104°24'41.323"W	1.40	LAST BHI MWD SURVEY
11015.00	90.220	177.780	6437.07	4460.17	-4385.60	-812.24	40°21'51.911"N	104°24'41.311"W	0.00	PROJECTION TO BIT, 5.5"CASING/BHL (SWSW, SEC.26-T05N-R63W, 461'FSL & 335'FWL, SEC.26)

HOLE & CASING SECTIONS - Ref Wellbore: STATE NORTH PLATTE A11-E14-26HNC AWB										Ref Wellpath: STATE NORTH PLATTE A11-E14-26HNC AWP
String/Diameter	Start MD [ft]	End MD [ft]	Interval [ft]	Start TVD [ft]	End TVD [ft]	Start N/S [ft]	Start E/W [ft]	End N/S [ft]	End E/W [ft]	
13.5in Open Hole	17.00	1678.00	1661.00	17.00	1671.50	0.00	0.00	46.55	-88.49	
9.625in Casing Surface	17.00	1666.00	1649.00	17.00	1659.72	0.00	0.00	45.48	-86.51	
8.5in Open Hole	1678.00	11015.00	9337.00	1671.50	6437.07	46.55	-88.49	-4385.60	-812.24	



# Actual Wellpath Report

STATE NORTH PLATTE A11-E14-26HNC AWP

Page 7 of 8



REFERENCE WELLPATH IDENTIFICATION			
Operator	BONANZA CREEK OIL COMPANY	Slot	SLOT#13 STATE NORTH PLATTE A11-E14-26HNC (376'FNL & 1080'FWL, SEC.26)
Area	COLORADO	Well	STATE NORTH PLATTE A11-E14-26HNC
Field	WELD COUNTY	Wellbore	STATE NORTH PLATTE A11-E14-26HNC AWB
Facility	SEC.26-T5N-R63W		

TARGETS								
Name	TVD [ft]	North [ft]	East [ft]	Grid East [US ft]	Grid North [US ft]	Latitude	Longitude	Shape
SEC.23-T05N-R63W	-3.00	-120.04	-0.98	3304075.56	1381735.41	40°22'34.062"N	104°24'30.831"W	polygon
SEC.26-T05N-R63W	-3.00	-120.04	-0.98	3304075.56	1381735.41	40°22'34.062"N	104°24'30.831"W	polygon
STATE NORTH PLATTE A11-E14-26HNC BHL REV-2 (470'FSL & 338'FWL, SEC.26)	6435.00	-4378.43	-800.38	3303328.66	1377467.69	40°21'51.982"N	104°24'41.158"W	point
STATE NORTH PLATTE A11-E14-26HNC TARGET REV-2 ( 589'FNL & 327'FWL, SEC.26)	6435.00	-206.58	-756.12	3303321.57	1381639.58	40°22'33.207"N	104°24'40.588"W	point
SEC.23-T05N-R63W 460' SETBACK	6555.00	-120.04	-0.98	3304075.56	1381735.41	40°22'34.062"N	104°24'30.831"W	polygon
SEC.26-T05N-R63W 460' SETBACK	6555.00	-120.04	-0.98	3304075.56	1381735.41	40°22'34.062"N	104°24'30.831"W	polygon

WELLPATH COMPOSITION - Ref Wellbore: STATE NORTH PLATTE A11-E14-26HNC AWB					Ref Wellpath: STATE NORTH PLATTE A11-E14-26HNC AWP	
Start MD [ft]	End MD [ft]	Positional Uncertainty Model		Log Name/Comment		Wellbore
17.00	1612.00	Custom BHI NaviTrak (Standard Rotating) (Rockies 0.03Gt model)		BHI MWD NAVITRAK +SR+ROCKIES <121-1612>		STATE NORTH PLATTE A11-E14-26HNC AWB
1612.00	10991.00	Custom BHI AutoTrak Curve (Axial Corr, Short spacing) (Rockies 0.03Gt model)		BHI MWD ATCURVE +AC+SS+ROCKIES <1757-10991>		STATE NORTH PLATTE A11-E14-26HNC AWB
10991.00	11015.00	Blind Drilling (std)		Projection to bit		STATE NORTH PLATTE A11-E14-26HNC AWB



# Actual Wellpath Report

STATE NORTH PLATTE A11-E14-26HNC AWP

Page 8 of 8



REFERENCE WELLPATH IDENTIFICATION			
Operator	BONANZA CREEK OIL COMPANY	Slot	SLOT#13 STATE NORTH PLATTE A11-E14-26HNC (376'FNL & 1080'FWL, SEC.26)
Area	COLORADO	Well	STATE NORTH PLATTE A11-E14-26HNC
Field	WELD COUNTY	Wellbore	STATE NORTH PLATTE A11-E14-26HNC AWB
Facility	SEC.26-T5N-R63W		

WELLPATH COMMENTS				
MD [ft]	Inclination [°]	Azimuth [°]	TVD [ft]	Comment
121.00	0.440	310.790	121.00	FIRST BHI MWD SURVEY
6790.00	81.146	184.200	6432.90	TOP OF PRODUCTION (NWNW, SEC.26-T05N-R63W, 548'FNL & 333'FWL, SEC.26)
10991.00	90.220	177.780	6437.16	LAST BHI MWD SURVEY
11015.00	90.220	177.780	6437.07	PROJECTION TO BIT, 5.5"CASING/BHL (SWSW, SEC.26-T05N-R63W, 461'FSL & 335'FWL, SEC.26)