

# SRC ENERGY

Location: COLORADO Slot: SLOT#18 GREELEY-ROTHER FEDERAL 33N-2C-L (1063'FSL & 294'FEL, SEC.01)  
Field: WELD COUNTY (NAD83, TRUE NORTH) Well: GREELEY-ROTHER FEDERAL 33N-2C-L  
Facility: SEC.01-T05N-R67W Wellbore: GREELEY-ROTHER FEDERAL 33N-2C-L PWB

Pilot reference wellpath is GREELEY-ROTHER FEDERAL 33N-2C-L PWP (REV-A.0)	Grid System: NAD83 / Lambert Colorado SP, Northern Zone (501), US feet
True vertical depths are referenced to PRECISION 462 (20) (RKB)	* = Wellpath was transformed from a different geodetic datum
Measured depths are referenced to PRECISION 462 (20) (RKB)	North Reference: True north
PRECISION 462 (20) (RKB) to Mean Sea Level: 4892 feet	Scale: True distance
Mean Sea Level to Mud line (At Slot: SLOT#18 GREELEY-ROTHER FEDERAL 33N-2C-L (1063'FSL & 294'FEL, SEC.01)): 0 feet	Depths are in feet
Coordinates are in feet referenced to Slot	Created by: doddiana on 2017-10-04
	Database: WellArcheoDB

## Location Information

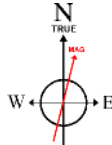
Facility Name	Grid East (US ft)	Grid North (US ft)	Latitude	Longitude
SEC.01-T05N-R67W	3185545.499	1399477.355	40°25'40.991"N	104°50'00.640"W
Slot	Local N (ft)	Local E (ft)	Grid East (US ft)	Grid North (US ft)
SLOT#18 GREELEY-ROTHER FEDERAL 33N-2C-L (1063'FSL & 294'FEL, SEC.01)	-1304.65	1.16	3185556.464	1399477.836
PRECISION 462 (20) (RKB) to Mud line (At Slot: SLOT#18 GREELEY-ROTHER FEDERAL 33N-2C-L (1063'FSL & 294'FEL, SEC.01))				4892ft
Mean Sea Level to Mud line (At Slot: SLOT#18 GREELEY-ROTHER FEDERAL 33N-2C-L (1063'FSL & 294'FEL, SEC.01))				0ft
PRECISION 462 (20) (RKB) to Mean Sea Level				4892ft

## Survey Program

Start MD (ft)	End MD (ft)	Tool	Model	Log Name/Comment	Wellbore
20.00	1750.00	BHI NavTrak	Custom BHI NavTrak (Standard Rotating+Atal Corr) (Rockies 0.03G model)		GREELEY-ROTHER FEDERAL 33N-2C-L PWB
1750.00	17278.45	BHI AutoTrak Curve	Custom BHI AutoTrak Curve (IFR1, Short) (Rockies 0.03G model)		GREELEY-ROTHER FEDERAL 33N-2C-L PWB

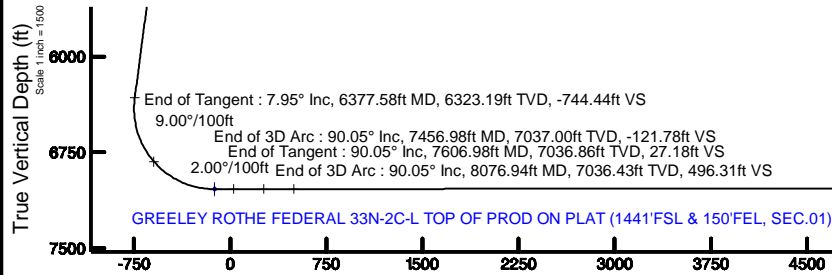


SRC ENERGY



BGGM (1900.0 to 2018.0) Dip: 66.87° Field: 52416.1 nT  
Magnetic North is 8.39 degrees East of True North (at 9/22/2017)

To correct azimuth from Magnetic to True add 8.39 degrees



Azimuth 272.74° with reference 0.00 N, 0.00 E

## Targets

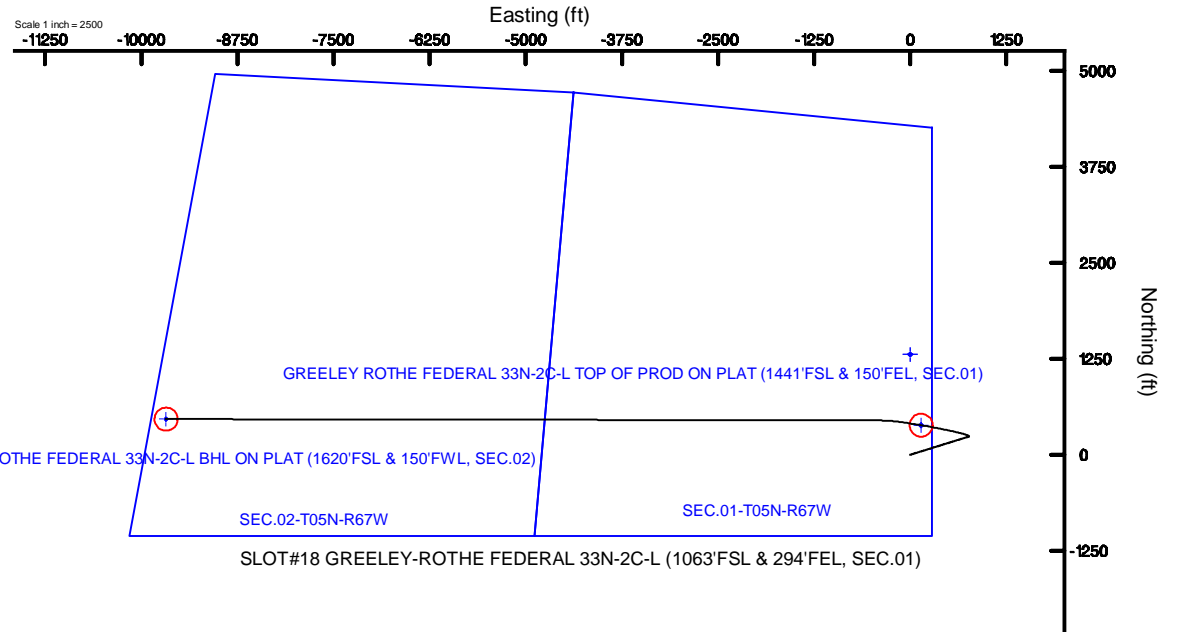
Name	MD (ft)	TVD (ft)	Local N (ft)	Local E (ft)	Grid East (US ft)	Grid North (US ft)	Latitude	Longitude
SEC.01-T05N-R67W		22.00	1304.65	-1.16	3185545.50	1399477.36	40°25'40.991"N	104°50'00.640"W
SEC.02-T05N-R67W		22.00	1304.65	-1.16	3185545.50	1399477.36	40°25'40.991"N	104°50'00.640"W
GREELEY ROTHER FEDERAL 33N-2C-L BHL ON PLAT (1620'FSL & 150'FWL, SEC.02)		7028.00	463.87	-9676.89	3175876.76	1398563.91	40°25'32.664"N	104°52'05.750"W
GREELEY ROTHER FEDERAL 33N-2C-L TOP OF PROD ON PLAT (1441'FSL & 150'FEL, SEC.01)		7037.00	383.64	140.29	3185693.86	1398557.45	40°25'31.890"N	104°49'58.811"W

## Hole and Casing Sections

Name	Start MD (ft)	End MD (ft)	Interval (ft)	Start TVD (ft)	End TVD (ft)	Start Local N (ft)	Start Local E (ft)	End Local N (ft)	End Local E (ft)	Wellbore
13.5in Open Hole	20.00	1750.00	1730.00	20.00	1740.06	0.00	0.00	45.18	145.47	GREELEY-ROTHER FEDERAL 33N-2C-L PWB
9.625in Casing Surface	20.00	1750.00	1730.00	20.00	1740.06	0.00	0.00	45.18	145.47	GREELEY-ROTHER FEDERAL 33N-2C-L PWB
8.5in Open Hole	1750.00	17278.45	15528.45	1740.06	7028.00	45.18	145.47	463.87	-9676.92	GREELEY-ROTHER FEDERAL 33N-2C-L PWB

## Well Profile Data

Design Comment	MD (ft)	Inc (°)	Az (°)	TVD (ft)	Local N (ft)	Local E (ft)	DLS (°/100ft)	VS (ft)
Tie On	20.00	0.000	72.745	20.00	0.00	0.00	0.00	0.00
End of Tangent	450.00	0.000	72.745	450.00	0.00	0.00	0.00	0.00
End of Build	847.41	7.948	72.745	846.13	8.16	26.28	2.00	-25.86
End of Tangent	6377.58	7.948	72.745	6323.19	234.99	756.56	0.00	-744.44
End of 3D Arc	7456.98	90.053	279.500	7037.00	383.64	140.31	9.00	-121.78
End of Tangent	7606.98	90.053	279.500	7036.86	408.40	-7.64	0.00	27.18
End of 3D Arc	8076.94	90.052	270.101	7036.43	447.68	-475.42	2.00	496.31
End of Tangent	17278.45	90.052	270.101	7028.00	463.87	-9676.92	0.00	9688.03



End of Tangent : 90.05° Inc, 17278.45ft MD, 7028.00ft TVD, 9688.03ft VS

GREELEY ROTHER FEDERAL 33N-2C-L BHL ON PLAT (1620'FSL & 150'FWL, SEC.02)

Scale 1 inch = 1500

GREELEY-ROTHE\_FEDERAL\_33N-2C-L\_PWP\_\_REV-A.0\_.las

~VERSION INFORMATION

VERS. 2.0 : CWLS LOG ASCII STANDARD-VERSION 2.0

WRAP. NO : ASCII DATA SECTION CONTAINS ONE ROW PER WELLPATH STATION

~WELL INFORMATION

#MNEM	.UNITS	DATA	:DESCRIPTION
#----	.-----	----	:-----
STRT	.ft	0.00	:START MD
STOP	.ft	17278.45	:STOP MD
STEP	.ft	0.0	:STEP (non-uniform increment)
NULL	.	-999.99	:NULL
COMP	.	SRC ENERGY	:OPERATOR
WELL	.	GREELEY-ROTHE FEDERAL 33N-2C-L	:WELL
FLD	.	WELD COUNTY (NAD83,TRUE NORTH)	:FIELD
LOC	.	COLORADO	:AREA (aka: Location)
CNTY	.	N/A	:COUNTY
STAT	.	N/A	:STATE
CTRY	.	N/A	:COUNTRY
SRVC	.	Baker Hughes	:CONTRACTOR
DATE	.	10/04/2017	:LOG REV DATE
API	.		:API NUMBER

~OTHER INFORMATION

#Software: WellArchitect(R) Version 5.0

#MNEM	.UNITS	DATA	:DESCRIPTION
#----	.-----	----	:-----
WPTYPE	.	PLANNED WELLPATH	:WELLPATH TYPE
FACILITY	.	SEC.01-T05N-R67W	:FACILITY
SLOT	.	SLOT#18 GREELEY-ROTHE FEDERAL 33N-2C-L (1063'FSL & 294'FEL, SEC.01)	:SLOT
WELLBORE	.	GREELEY-ROTHE FEDERAL 33N-2C-L PWB	:WELLBORE
WELLPATH	.	GREELEY-ROTHE FEDERAL 33N-2C-L PWP (REV-A.0)	:WELLPATH
MDREFPT	.	PRECISION 462 (20') (RKB)	:MD REFERENCE POINT
TVDREFPT	.	PRECISION 462 (20') (RKB)	:TVD REFERENCE POINT
LCLREFPT	.	Slot	:LOCAL COORDINATE REFERENCE PT

GREELEY-ROTHE\_FEDERAL\_33N-2C-L\_PWP\_\_REV-A.0\_.las

VSAZIMUTH.deg	272.74	:VERTICAL SECTION AZIMUTH
VSORIGN .ft	0.00	:VERTICAL SECTION ORIGIN NORTH
VSORIGE .ft	0.00	:VERTICAL SECTION ORIGIN EAST

~CURVE (WELLPATH) INFORMATION

#MNEM	.UNITS	:DESCRIPTION
#----	.-----	:-----
DEPT	.ft	:MEASURED DEPTH
INC	.deg	:INCLINATION
AZI	.deg	:AZIMUTH
TVD	.ft	:TRUE VERTICAL DEPTH
SECT	.ft	:CROSS SECTION (CURTAIN/VERTICAL)
LOCALN	.ft	:LOCAL NORTH
LOCALE	.ft	:LOCAL EAST
LAT	.deg	:LATITUDE
LONG	.deg	:LONGITUDE
DLS	.deg/100ft	:DOGLEG SEVERITY

~ASCII DATA

0.00	0.00	72.75	0.00	0.00	0.00	0.00	40.4244719	-104.8335069	0.00
20.00	0.00	72.75	20.00	0.00	0.00	0.00	40.4244719	-104.8335069	0.00
120.00	0.00	72.75	120.00	0.00	0.00	0.00	40.4244719	-104.8335069	0.00
220.00	0.00	72.75	220.00	0.00	0.00	0.00	40.4244719	-104.8335069	0.00
320.00	0.00	72.75	320.00	0.00	0.00	0.00	40.4244719	-104.8335069	0.00
420.00	0.00	72.75	420.00	0.00	0.00	0.00	40.4244719	-104.8335069	0.00
450.00	0.00	72.75	450.00	0.00	0.00	0.00	40.4244719	-104.8335069	0.00
520.00	1.40	72.75	519.99	-0.80	0.25	0.82	40.4244726	-104.8335040	2.00
620.00	3.40	72.75	619.90	-4.74	1.50	4.82	40.4244761	-104.8334896	2.00
720.00	5.40	72.75	719.60	-11.95	3.77	12.14	40.4244823	-104.8334633	2.00
820.00	7.40	72.75	818.97	-22.42	7.08	22.79	40.4244914	-104.8334251	2.00
847.41	7.95	72.75	846.13	-25.86	8.16	26.28	40.4244944	-104.8334125	2.00
920.00	7.95	72.75	918.03	-35.29	11.14	35.87	40.4245025	-104.8333781	0.00
1020.00	7.95	72.75	1017.07	-48.29	15.24	49.07	40.4245138	-104.8333307	0.00
1120.00	7.95	72.75	1116.11	-61.28	19.34	62.28	40.4245250	-104.8332833	0.00

GREELEY-ROTHE\_FEDERAL\_33N-2C-L\_PWP\_\_REV-A.0\_.las

1220.00	7.95	72.75	1215.15	-74.27	23.45	75.48	40.4245363	-104.8332358	0.00
1320.00	7.95	72.75	1314.19	-87.27	27.55	88.69	40.4245476	-104.8331884	0.00
1420.00	7.95	72.75	1413.23	-100.26	31.65	101.89	40.4245588	-104.8331410	0.00
1520.00	7.95	72.75	1512.27	-113.26	35.75	115.10	40.4245701	-104.8330935	0.00
1620.00	7.95	72.75	1611.30	-126.25	39.85	128.30	40.4245813	-104.8330461	0.00
1720.00	7.95	72.75	1710.34	-139.24	43.95	141.51	40.4245926	-104.8329987	0.00
1820.00	7.95	72.75	1809.38	-152.24	48.05	154.72	40.4246038	-104.8329513	0.00
1920.00	7.95	72.75	1908.42	-165.23	52.16	167.92	40.4246151	-104.8329038	0.00
2020.00	7.95	72.75	2007.46	-178.22	56.26	181.13	40.4246264	-104.8328564	0.00
2120.00	7.95	72.75	2106.50	-191.22	60.36	194.33	40.4246376	-104.8328090	0.00
2220.00	7.95	72.75	2205.54	-204.21	64.46	207.54	40.4246489	-104.8327615	0.00
2320.00	7.95	72.75	2304.58	-217.21	68.56	220.74	40.4246601	-104.8327141	0.00
2420.00	7.95	72.75	2403.62	-230.20	72.66	233.95	40.4246714	-104.8326667	0.00
2520.00	7.95	72.75	2502.66	-243.19	76.77	247.15	40.4246827	-104.8326192	0.00
2620.00	7.95	72.75	2601.70	-256.19	80.87	260.36	40.4246939	-104.8325718	0.00
2720.00	7.95	72.75	2700.74	-269.18	84.97	273.56	40.4247052	-104.8325244	0.00
2820.00	7.95	72.75	2799.78	-282.18	89.07	286.77	40.4247164	-104.8324770	0.00
2920.00	7.95	72.75	2898.82	-295.17	93.17	299.97	40.4247277	-104.8324295	0.00
3020.00	7.95	72.75	2997.86	-308.16	97.27	313.18	40.4247389	-104.8323821	0.00
3120.00	7.95	72.75	3096.90	-321.16	101.37	326.38	40.4247502	-104.8323347	0.00
3220.00	7.95	72.75	3195.93	-334.15	105.48	339.59	40.4247615	-104.8322872	0.00
3320.00	7.95	72.75	3294.97	-347.14	109.58	352.80	40.4247727	-104.8322398	0.00
3420.00	7.95	72.75	3394.01	-360.14	113.68	366.00	40.4247840	-104.8321924	0.00
3520.00	7.95	72.75	3493.05	-373.13	117.78	379.21	40.4247952	-104.8321450	0.00
3620.00	7.95	72.75	3592.09	-386.13	121.88	392.41	40.4248065	-104.8320975	0.00
3720.00	7.95	72.75	3691.13	-399.12	125.98	405.62	40.4248177	-104.8320501	0.00
3820.00	7.95	72.75	3790.17	-412.11	130.09	418.82	40.4248290	-104.8320027	0.00
3920.00	7.95	72.75	3889.21	-425.11	134.19	432.03	40.4248403	-104.8319552	0.00
4020.00	7.95	72.75	3988.25	-438.10	138.29	445.23	40.4248515	-104.8319078	0.00
4120.00	7.95	72.75	4087.29	-451.09	142.39	458.44	40.4248628	-104.8318604	0.00
4220.00	7.95	72.75	4186.33	-464.09	146.49	471.64	40.4248740	-104.8318129	0.00
4320.00	7.95	72.75	4285.37	-477.08	150.59	484.85	40.4248853	-104.8317655	0.00
4420.00	7.95	72.75	4384.41	-490.08	154.70	498.05	40.4248966	-104.8317181	0.00
4520.00	7.95	72.75	4483.45	-503.07	158.80	511.26	40.4249078	-104.8316707	0.00

GREELEY-ROTHE\_FEDERAL\_33N-2C-L\_PWP\_\_REV-A.0\_.las

4620.00	7.95	72.75	4582.49	-516.06	162.90	524.46	40.4249191	-104.8316232	0.00
4720.00	7.95	72.75	4681.53	-529.06	167.00	537.67	40.4249303	-104.8315758	0.00
4820.00	7.95	72.75	4780.56	-542.05	171.10	550.87	40.4249416	-104.8315284	0.00
4920.00	7.95	72.75	4879.60	-555.04	175.20	564.08	40.4249528	-104.8314809	0.00
5020.00	7.95	72.75	4978.64	-568.04	179.30	577.29	40.4249641	-104.8314335	0.00
5120.00	7.95	72.75	5077.68	-581.03	183.41	590.49	40.4249754	-104.8313861	0.00
5220.00	7.95	72.75	5176.72	-594.03	187.51	603.70	40.4249866	-104.8313386	0.00
5320.00	7.95	72.75	5275.76	-607.02	191.61	616.90	40.4249979	-104.8312912	0.00
5420.00	7.95	72.75	5374.80	-620.01	195.71	630.11	40.4250091	-104.8312438	0.00
5520.00	7.95	72.75	5473.84	-633.01	199.81	643.31	40.4250204	-104.8311964	0.00
5620.00	7.95	72.75	5572.88	-646.00	203.91	656.52	40.4250316	-104.8311489	0.00
5720.00	7.95	72.75	5671.92	-658.99	208.02	669.72	40.4250429	-104.8311015	0.00
5820.00	7.95	72.75	5770.96	-671.99	212.12	682.93	40.4250542	-104.8310541	0.00
5920.00	7.95	72.75	5870.00	-684.98	216.22	696.13	40.4250654	-104.8310066	0.00
6020.00	7.95	72.75	5969.04	-697.98	220.32	709.34	40.4250767	-104.8309592	0.00
6120.00	7.95	72.75	6068.08	-710.97	224.42	722.54	40.4250879	-104.8309118	0.00
6220.00	7.95	72.75	6167.12	-723.96	228.52	735.75	40.4250992	-104.8308643	0.00
6320.00	7.95	72.75	6266.16	-736.96	232.62	748.95	40.4251104	-104.8308169	0.00
6377.58	7.95	72.75	6323.19	-744.44	234.99	756.56	40.4251169	-104.8307896	0.00
6420.00	4.86	51.87	6365.34	-748.56	236.97	760.78	40.4251224	-104.8307745	9.00
6520.00	6.76	311.54	6465.02	-747.17	243.50	759.70	40.4251403	-104.8307783	9.00
6620.00	15.15	292.93	6563.13	-730.29	252.51	743.23	40.4251650	-104.8308375	9.00
6720.00	23.98	287.63	6657.27	-698.32	263.78	711.77	40.4251960	-104.8309505	9.00
6820.00	32.90	285.08	6745.12	-652.05	277.02	666.08	40.4252323	-104.8311146	9.00
6920.00	41.85	283.53	6824.51	-592.63	291.92	607.30	40.4252732	-104.8313257	9.00
7020.00	50.82	282.44	6893.48	-521.51	308.11	536.88	40.4253177	-104.8315786	9.00
7120.00	59.79	281.60	6950.35	-440.44	325.18	456.54	40.4253645	-104.8318672	9.00
7220.00	68.77	280.90	6993.70	-351.43	342.72	368.26	40.4254127	-104.8321842	9.00
7320.00	77.75	280.29	7022.47	-256.66	360.30	274.23	40.4254609	-104.8325220	9.00
7420.00	86.73	279.71	7035.96	-158.47	377.48	176.75	40.4255081	-104.8328721	9.00
7456.98	90.05	279.50	7037.00	-121.78	383.64	140.31	40.4255250	-104.8330030	9.00
7520.00	90.05	279.50	7036.94	-59.19	394.04	78.15	40.4255536	-104.8332263	0.00
7606.98	90.05	279.50	7036.86	27.18	408.40	-7.64	40.4255930	-104.8335344	0.00
7620.00	90.05	279.24	7036.85	40.12	410.52	-20.48	40.4255988	-104.8335805	2.00

GREELEY-ROTHE\_FEDERAL\_33N-2C-L\_PWP\_\_REV-A.0\_.las

7720.00	90.05	277.24	7036.76	139.65	424.85	-119.45	40.4256381	-104.8339360	2.00
7820.00	90.05	275.24	7036.66	239.46	435.72	-218.85	40.4256679	-104.8342930	2.00
7920.00	90.05	273.24	7036.57	339.42	443.11	-318.57	40.4256882	-104.8346512	2.00
8020.00	90.05	271.24	7036.48	439.41	447.02	-418.49	40.4256990	-104.8350101	2.00
8076.94	90.05	270.10	7036.43	496.31	447.68	-475.42	40.4257008	-104.8352145	2.00
8120.00	90.05	270.10	7036.39	539.33	447.76	-518.48	40.4257010	-104.8353692	0.00
8220.00	90.05	270.10	7036.30	639.22	447.94	-618.48	40.4257015	-104.8357284	0.00
8320.00	90.05	270.10	7036.21	739.12	448.11	-718.48	40.4257019	-104.8360876	0.00
8420.00	90.05	270.10	7036.11	839.01	448.29	-818.48	40.4257024	-104.8364467	0.00
8520.00	90.05	270.10	7036.02	938.90	448.46	-918.48	40.4257029	-104.8368059	0.00
8620.00	90.05	270.10	7035.93	1038.80	448.64	-1018.48	40.4257034	-104.8371651	0.00
8720.00	90.05	270.10	7035.84	1138.69	448.82	-1118.48	40.4257038	-104.8375243	0.00
8820.00	90.05	270.10	7035.75	1238.58	448.99	-1218.48	40.4257043	-104.8378834	0.00
8920.00	90.05	270.10	7035.66	1338.48	449.17	-1318.48	40.4257048	-104.8382426	0.00
9020.00	90.05	270.10	7035.56	1438.37	449.34	-1418.48	40.4257052	-104.8386018	0.00
9120.00	90.05	270.10	7035.47	1538.26	449.52	-1518.48	40.4257057	-104.8389609	0.00
9220.00	90.05	270.10	7035.38	1638.16	449.69	-1618.48	40.4257062	-104.8393201	0.00
9320.00	90.05	270.10	7035.29	1738.05	449.87	-1718.48	40.4257066	-104.8396793	0.00
9420.00	90.05	270.10	7035.20	1837.94	450.05	-1818.48	40.4257071	-104.8400385	0.00
9520.00	90.05	270.10	7035.11	1937.84	450.22	-1918.48	40.4257075	-104.8403976	0.00
9620.00	90.05	270.10	7035.01	2037.73	450.40	-2018.48	40.4257080	-104.8407568	0.00
9720.00	90.05	270.10	7034.92	2137.62	450.57	-2118.48	40.4257085	-104.8411160	0.00
9820.00	90.05	270.10	7034.83	2237.52	450.75	-2218.48	40.4257089	-104.8414752	0.00
9920.00	90.05	270.10	7034.74	2337.41	450.93	-2318.48	40.4257094	-104.8418343	0.00
10020.00	90.05	270.10	7034.65	2437.31	451.10	-2418.48	40.4257098	-104.8421935	0.00
10120.00	90.05	270.10	7034.56	2537.20	451.28	-2518.48	40.4257103	-104.8425527	0.00
10220.00	90.05	270.10	7034.46	2637.09	451.45	-2618.48	40.4257108	-104.8429119	0.00
10320.00	90.05	270.10	7034.37	2736.99	451.63	-2718.48	40.4257112	-104.8432710	0.00
10420.00	90.05	270.10	7034.28	2836.88	451.81	-2818.48	40.4257117	-104.8436302	0.00
10520.00	90.05	270.10	7034.19	2936.77	451.98	-2918.48	40.4257121	-104.8439894	0.00
10620.00	90.05	270.10	7034.10	3036.67	452.16	-3018.48	40.4257126	-104.8443486	0.00
10720.00	90.05	270.10	7034.01	3136.56	452.33	-3118.48	40.4257130	-104.8447077	0.00
10820.00	90.05	270.10	7033.92	3236.45	452.51	-3218.48	40.4257135	-104.8450669	0.00
10920.00	90.05	270.10	7033.82	3336.35	452.68	-3318.48	40.4257139	-104.8454261	0.00

GREELEY-ROTHE\_FEDERAL\_33N-2C-L\_PWP\_\_REV-A.0\_.las

11020.00	90.05	270.10	7033.73	3436.24	452.86	-3418.48	40.4257143	-104.8457853	0.00
11120.00	90.05	270.10	7033.64	3536.13	453.04	-3518.48	40.4257148	-104.8461444	0.00
11220.00	90.05	270.10	7033.55	3636.03	453.21	-3618.48	40.4257152	-104.8465036	0.00
11320.00	90.05	270.10	7033.46	3735.92	453.39	-3718.48	40.4257157	-104.8468628	0.00
11420.00	90.05	270.10	7033.37	3835.81	453.56	-3818.48	40.4257161	-104.8472220	0.00
11520.00	90.05	270.10	7033.27	3935.71	453.74	-3918.48	40.4257166	-104.8475811	0.00
11620.00	90.05	270.10	7033.18	4035.60	453.92	-4018.48	40.4257170	-104.8479403	0.00
11720.00	90.05	270.10	7033.09	4135.50	454.09	-4118.48	40.4257174	-104.8482995	0.00
11820.00	90.05	270.10	7033.00	4235.39	454.27	-4218.48	40.4257179	-104.8486586	0.00
11920.00	90.05	270.10	7032.91	4335.28	454.44	-4318.48	40.4257183	-104.8490178	0.00
12020.00	90.05	270.10	7032.82	4435.18	454.62	-4418.48	40.4257187	-104.8493770	0.00
12120.00	90.05	270.10	7032.72	4535.07	454.79	-4518.48	40.4257192	-104.8497362	0.00
12220.00	90.05	270.10	7032.63	4634.96	454.97	-4618.48	40.4257196	-104.8500953	0.00
12320.00	90.05	270.10	7032.54	4734.86	455.15	-4718.48	40.4257200	-104.8504545	0.00
12420.00	90.05	270.10	7032.45	4834.75	455.32	-4818.48	40.4257205	-104.8508137	0.00
12520.00	90.05	270.10	7032.36	4934.64	455.50	-4918.48	40.4257209	-104.8511729	0.00
12620.00	90.05	270.10	7032.27	5034.54	455.67	-5018.48	40.4257213	-104.8515320	0.00
12720.00	90.05	270.10	7032.18	5134.43	455.85	-5118.48	40.4257217	-104.8518912	0.00
12820.00	90.05	270.10	7032.08	5234.32	456.03	-5218.47	40.4257222	-104.8522504	0.00
12920.00	90.05	270.10	7031.99	5334.22	456.20	-5318.47	40.4257226	-104.8526096	0.00
13020.00	90.05	270.10	7031.90	5434.11	456.38	-5418.47	40.4257230	-104.8529687	0.00
13120.00	90.05	270.10	7031.81	5534.00	456.55	-5518.47	40.4257234	-104.8533279	0.00
13220.00	90.05	270.10	7031.72	5633.90	456.73	-5618.47	40.4257239	-104.8536871	0.00
13320.00	90.05	270.10	7031.63	5733.79	456.91	-5718.47	40.4257243	-104.8540463	0.00
13420.00	90.05	270.10	7031.53	5833.69	457.08	-5818.47	40.4257247	-104.8544054	0.00
13520.00	90.05	270.10	7031.44	5933.58	457.26	-5918.47	40.4257251	-104.8547646	0.00
13620.00	90.05	270.10	7031.35	6033.47	457.43	-6018.47	40.4257255	-104.8551238	0.00
13720.00	90.05	270.10	7031.26	6133.37	457.61	-6118.47	40.4257259	-104.8554830	0.00
13820.00	90.05	270.10	7031.17	6233.26	457.78	-6218.47	40.4257264	-104.8558421	0.00
13920.00	90.05	270.10	7031.08	6333.15	457.96	-6318.47	40.4257268	-104.8562013	0.00
14020.00	90.05	270.10	7030.98	6433.05	458.14	-6418.47	40.4257272	-104.8565605	0.00
14120.00	90.05	270.10	7030.89	6532.94	458.31	-6518.47	40.4257276	-104.8569197	0.00
14220.00	90.05	270.10	7030.80	6632.83	458.49	-6618.47	40.4257280	-104.8572788	0.00
14320.00	90.05	270.10	7030.71	6732.73	458.66	-6718.47	40.4257284	-104.8576380	0.00

GREELEY-ROTHE\_FEDERAL\_33N-2C-L\_PWP\_\_REV-A.0\_.las

14420.00	90.05	270.10	7030.62	6832.62	458.84	-6818.47	40.4257288	-104.8579972	0.00
14520.00	90.05	270.10	7030.53	6932.51	459.02	-6918.47	40.4257292	-104.8583564	0.00
14620.00	90.05	270.10	7030.43	7032.41	459.19	-7018.47	40.4257296	-104.8587155	0.00
14720.00	90.05	270.10	7030.34	7132.30	459.37	-7118.47	40.4257300	-104.8590747	0.00
14820.00	90.05	270.10	7030.25	7232.19	459.54	-7218.47	40.4257304	-104.8594339	0.00
14920.00	90.05	270.10	7030.16	7332.09	459.72	-7318.47	40.4257308	-104.8597931	0.00
15020.00	90.05	270.10	7030.07	7431.98	459.89	-7418.47	40.4257312	-104.8601522	0.00
15120.00	90.05	270.10	7029.98	7531.88	460.07	-7518.47	40.4257316	-104.8605114	0.00
15220.00	90.05	270.10	7029.89	7631.77	460.25	-7618.47	40.4257320	-104.8608706	0.00
15320.00	90.05	270.10	7029.79	7731.66	460.42	-7718.47	40.4257324	-104.8612297	0.00
15420.00	90.05	270.10	7029.70	7831.56	460.60	-7818.47	40.4257328	-104.8615889	0.00
15520.00	90.05	270.10	7029.61	7931.45	460.77	-7918.47	40.4257332	-104.8619481	0.00
15620.00	90.05	270.10	7029.52	8031.34	460.95	-8018.47	40.4257336	-104.8623073	0.00
15720.00	90.05	270.10	7029.43	8131.24	461.13	-8118.47	40.4257340	-104.8626664	0.00
15820.00	90.05	270.10	7029.34	8231.13	461.30	-8218.47	40.4257344	-104.8630256	0.00
15920.00	90.05	270.10	7029.24	8331.02	461.48	-8318.47	40.4257348	-104.8633848	0.00
16020.00	90.05	270.10	7029.15	8430.92	461.65	-8418.47	40.4257352	-104.8637440	0.00
16120.00	90.05	270.10	7029.06	8530.81	461.83	-8518.47	40.4257356	-104.8641031	0.00
16220.00	90.05	270.10	7028.97	8630.70	462.01	-8618.47	40.4257360	-104.8644623	0.00
16320.00	90.05	270.10	7028.88	8730.60	462.18	-8718.47	40.4257364	-104.8648215	0.00
16420.00	90.05	270.10	7028.79	8830.49	462.36	-8818.47	40.4257367	-104.8651807	0.00
16520.00	90.05	270.10	7028.69	8930.39	462.53	-8918.47	40.4257371	-104.8655398	0.00
16620.00	90.05	270.10	7028.60	9030.28	462.71	-9018.47	40.4257375	-104.8658990	0.00
16720.00	90.05	270.10	7028.51	9130.17	462.88	-9118.47	40.4257379	-104.8662582	0.00
16820.00	90.05	270.10	7028.42	9230.07	463.06	-9218.47	40.4257383	-104.8666174	0.00
16920.00	90.05	270.10	7028.33	9329.96	463.24	-9318.47	40.4257386	-104.8669765	0.00
17020.00	90.05	270.10	7028.24	9429.85	463.41	-9418.47	40.4257390	-104.8673357	0.00
17120.00	90.05	270.10	7028.15	9529.75	463.59	-9518.47	40.4257394	-104.8676949	0.00
17220.00	90.05	270.10	7028.05	9629.64	463.76	-9618.47	40.4257398	-104.8680541	0.00
17278.45	90.05	270.10	7028.00	9688.03	463.87	-9676.92	40.4257400	-104.8682640	0.00





# Planned Wellpath Report

## GREELEY-ROTHER FEDERAL 33N-2C-L PWP (REV-A.0)

Page 1 of 9



REFERENCE WELLPATH IDENTIFICATION			
Operator	SRC ENERGY	Slot	SLOT#18 GREELEY-ROTHER FEDERAL 33N-2C-L (1063'FSL & 294'FEL, SEC.01)
Area	COLORADO	Well	GREELEY-ROTHER FEDERAL 33N-2C-L
Field	WELD COUNTY (NAD83,TRUE NORTH)	Wellbore	GREELEY-ROTHER FEDERAL 33N-2C-L PWB
Facility	SEC.01-T05N-R67W		

REPORT SETUP INFORMATION			
Projection System	NAD83 / Lambert Colorado SP, Northern Zone (501), US feet	Software System	WellArchitect® 5.0
North Reference	True	User	Doddanna
Scale	0.999961	Report Generated	10/4/2017 at 2:24:42 PM
Convergence at slot	0.43° East	Database/Source file	WellArchitectDB/GREELEY-ROTHER FEDERAL_33N-2C-L_PWP__REV-A.0_.xml

WELLPATH LOCATION						
	Local coordinates		Grid coordinates		Geographic coordinates	
	North[ft]	East[ft]	Easting[US ft]	Northing[US ft]	Latitude	Longitude
Slot Location	-1304.65	1.16	3185556.46	1398172.81	40°25'28.099"N	104°50'00.625"W
Facility Reference Pt			3185545.50	1399477.36	40°25'40.991"N	104°50'00.640"W
Field Reference Pt			3171284.48	1426358.81	40°30'07.643"N	104°53'02.634"W

WELLPATH DATUM			
Calculation method	Minimum curvature	PRECISION 462 (20') (RKB) to Facility Vertical Datum	4892.00ft
Horizontal Reference Pt	Slot	PRECISION 462 (20') (RKB) to Mean Sea Level	4892.00ft
Vertical Reference Pt	PRECISION 462 (20') (RKB)	PRECISION 462 (20') (RKB) to Mud Line at Slot (SLOT#18 GREELEY-ROTHER FEDERAL 33N-2C-L (1063'FSL & 294'FEL, SEC.01))	4892.00ft
MD Reference Pt	PRECISION 462 (20') (RKB)	Section Origin	N 0.00, E 0.00 ft
Field Vertical Reference	Mean Sea Level	Section Azimuth	272.74°



# Planned Wellpath Report

## GREELEY-ROTHER FEDERAL 33N-2C-L PWP (REV-A.0)

Page 2 of 9



REFERENCE WELLPATH IDENTIFICATION			
Operator	SRC ENERGY	Slot	SLOT#18 GREELEY-ROTHER FEDERAL 33N-2C-L (1063'FSL & 294'FEL, SEC.01)
Area	COLORADO	Well	GREELEY-ROTHER FEDERAL 33N-2C-L
Field	WELD COUNTY (NAD83,TRUE NORTH)	Wellbore	GREELEY-ROTHER FEDERAL 33N-2C-L PWB
Facility	SEC.01-T05N-R67W		

WELLPATH DATA (181 stations) † = interpolated/extrapolated station								
MD [ft]	Inclination [°]	Azimuth [°]	TVD [ft]	Vert Sect [ft]	North [ft]	East [ft]	DLS [°/100ft]	Comments
0.00†	0.000	72.745	0.00	0.00	0.00	0.00	0.00	
20.00	0.000	72.745	20.00	0.00	0.00	0.00	0.00	Tie On
120.00†	0.000	72.745	120.00	0.00	0.00	0.00	0.00	
220.00†	0.000	72.745	220.00	0.00	0.00	0.00	0.00	
320.00†	0.000	72.745	320.00	0.00	0.00	0.00	0.00	
420.00†	0.000	72.745	420.00	0.00	0.00	0.00	0.00	
450.00	0.000	72.745	450.00	0.00	0.00	0.00	0.00	End of Tangent
520.00†	1.400	72.745	519.99	-0.80	0.25	0.82	2.00	
620.00†	3.400	72.745	619.90	-4.74	1.50	4.82	2.00	
720.00†	5.400	72.745	719.60	-11.95	3.77	12.14	2.00	
820.00†	7.400	72.745	818.97	-22.42	7.08	22.79	2.00	
847.41	7.948	72.745	846.13	-25.86	8.16	26.28	2.00	End of Build
920.00†	7.948	72.745	918.03	-35.29	11.14	35.87	0.00	
1020.00†	7.948	72.745	1017.07	-48.29	15.24	49.07	0.00	
1120.00†	7.948	72.745	1116.11	-61.28	19.34	62.28	0.00	
1220.00†	7.948	72.745	1215.15	-74.27	23.45	75.48	0.00	
1320.00†	7.948	72.745	1314.19	-87.27	27.55	88.69	0.00	
1420.00†	7.948	72.745	1413.23	-100.26	31.65	101.89	0.00	
1520.00†	7.948	72.745	1512.27	-113.26	35.75	115.10	0.00	
1620.00†	7.948	72.745	1611.30	-126.25	39.85	128.30	0.00	
1720.00†	7.948	72.745	1710.34	-139.24	43.95	141.51	0.00	
1820.00†	7.948	72.745	1809.38	-152.24	48.05	154.72	0.00	
1920.00†	7.948	72.745	1908.42	-165.23	52.16	167.92	0.00	
2020.00†	7.948	72.745	2007.46	-178.22	56.26	181.13	0.00	
2120.00†	7.948	72.745	2106.50	-191.22	60.36	194.33	0.00	
2220.00†	7.948	72.745	2205.54	-204.21	64.46	207.54	0.00	
2320.00†	7.948	72.745	2304.58	-217.21	68.56	220.74	0.00	
2420.00†	7.948	72.745	2403.62	-230.20	72.66	233.95	0.00	
2520.00†	7.948	72.745	2502.66	-243.19	76.77	247.15	0.00	
2620.00†	7.948	72.745	2601.70	-256.19	80.87	260.36	0.00	



# Planned Wellpath Report

## GREELEY-ROTHER FEDERAL 33N-2C-L PWP (REV-A.0)

Page 3 of 9



REFERENCE WELLPATH IDENTIFICATION			
Operator	SRC ENERGY	Slot	SLOT#18 GREELEY-ROTHER FEDERAL 33N-2C-L (1063'FSL & 294'FEL, SEC.01)
Area	COLORADO	Well	GREELEY-ROTHER FEDERAL 33N-2C-L
Field	WELD COUNTY (NAD83,TRUE NORTH)	Wellbore	GREELEY-ROTHER FEDERAL 33N-2C-L PWB
Facility	SEC.01-T05N-R67W		

### WELLPATH DATA (181 stations) † = interpolated/extrapolated station

MD [ft]	Inclination [°]	Azimuth [°]	TVD [ft]	Vert Sect [ft]	North [ft]	East [ft]	DLS [°/100ft]	Comments
2720.00†	7.948	72.745	2700.74	-269.18	84.97	273.56	0.00	
2820.00†	7.948	72.745	2799.78	-282.18	89.07	286.77	0.00	
2920.00†	7.948	72.745	2898.82	-295.17	93.17	299.97	0.00	
3020.00†	7.948	72.745	2997.86	-308.16	97.27	313.18	0.00	
3120.00†	7.948	72.745	3096.90	-321.16	101.37	326.38	0.00	
3220.00†	7.948	72.745	3195.93	-334.15	105.48	339.59	0.00	
3320.00†	7.948	72.745	3294.97	-347.14	109.58	352.80	0.00	
3420.00†	7.948	72.745	3394.01	-360.14	113.68	366.00	0.00	
3520.00†	7.948	72.745	3493.05	-373.13	117.78	379.21	0.00	
3620.00†	7.948	72.745	3592.09	-386.13	121.88	392.41	0.00	
3720.00†	7.948	72.745	3691.13	-399.12	125.98	405.62	0.00	
3820.00†	7.948	72.745	3790.17	-412.11	130.09	418.82	0.00	
3920.00†	7.948	72.745	3889.21	-425.11	134.19	432.03	0.00	
4020.00†	7.948	72.745	3988.25	-438.10	138.29	445.23	0.00	
4120.00†	7.948	72.745	4087.29	-451.09	142.39	458.44	0.00	
4220.00†	7.948	72.745	4186.33	-464.09	146.49	471.64	0.00	
4320.00†	7.948	72.745	4285.37	-477.08	150.59	484.85	0.00	
4420.00†	7.948	72.745	4384.41	-490.08	154.70	498.05	0.00	
4520.00†	7.948	72.745	4483.45	-503.07	158.80	511.26	0.00	
4620.00†	7.948	72.745	4582.49	-516.06	162.90	524.46	0.00	
4720.00†	7.948	72.745	4681.53	-529.06	167.00	537.67	0.00	
4820.00†	7.948	72.745	4780.56	-542.05	171.10	550.87	0.00	
4920.00†	7.948	72.745	4879.60	-555.04	175.20	564.08	0.00	
5020.00†	7.948	72.745	4978.64	-568.04	179.30	577.29	0.00	
5120.00†	7.948	72.745	5077.68	-581.03	183.41	590.49	0.00	
5220.00†	7.948	72.745	5176.72	-594.03	187.51	603.70	0.00	
5320.00†	7.948	72.745	5275.76	-607.02	191.61	616.90	0.00	
5420.00†	7.948	72.745	5374.80	-620.01	195.71	630.11	0.00	
5520.00†	7.948	72.745	5473.84	-633.01	199.81	643.31	0.00	
5620.00†	7.948	72.745	5572.88	-646.00	203.91	656.52	0.00	



# Planned Wellpath Report

## GREELEY-ROTHER FEDERAL 33N-2C-L PWP (REV-A.0)

Page 4 of 9



REFERENCE WELLPATH IDENTIFICATION			
Operator	SRC ENERGY	Slot	SLOT#18 GREELEY-ROTHER FEDERAL 33N-2C-L (1063'FSL & 294'FEL, SEC.01)
Area	COLORADO	Well	GREELEY-ROTHER FEDERAL 33N-2C-L
Field	WELD COUNTY (NAD83,TRUE NORTH)	Wellbore	GREELEY-ROTHER FEDERAL 33N-2C-L PWB
Facility	SEC.01-T05N-R67W		

WELLPATH DATA (181 stations) † = interpolated/extrapolated station								
MD [ft]	Inclination [°]	Azimuth [°]	TVD [ft]	Vert Sect [ft]	North [ft]	East [ft]	DLS [°/100ft]	Comments
5720.00†	7.948	72.745	5671.92	-658.99	208.02	669.72	0.00	
5820.00†	7.948	72.745	5770.96	-671.99	212.12	682.93	0.00	
5920.00†	7.948	72.745	5870.00	-684.98	216.22	696.13	0.00	
6020.00†	7.948	72.745	5969.04	-697.98	220.32	709.34	0.00	
6120.00†	7.948	72.745	6068.08	-710.97	224.42	722.54	0.00	
6220.00†	7.948	72.745	6167.12	-723.96	228.52	735.75	0.00	
6320.00†	7.948	72.745	6266.16	-736.96	232.62	748.95	0.00	
6377.58	7.948	72.745	6323.19	-744.44	234.99	756.56	0.00	End of Tangent
6420.00†	4.863	51.871	6365.34	-748.56	236.97	760.78	9.00	
6520.00†	6.758	311.540	6465.02	-747.17	243.50	759.70	9.00	
6620.00†	15.149	292.929	6563.13	-730.29	252.51	743.23	9.00	
6720.00†	23.981	287.627	6657.27	-698.32	263.78	711.77	9.00	
6820.00†	32.900	285.079	6745.12	-652.05	277.02	666.08	9.00	
6920.00†	41.851	283.527	6824.51	-592.63	291.92	607.30	9.00	
7020.00†	50.817	282.440	6893.48	-521.51	308.11	536.88	9.00	
7120.00†	59.791	281.601	6950.35	-440.44	325.18	456.54	9.00	
7220.00†	68.769	280.903	6993.70	-351.43	342.72	368.26	9.00	
7320.00†	77.750	280.285	7022.47	-256.66	360.30	274.23	9.00	
7420.00†	86.732	279.709	7035.96	-158.47	377.48	176.75	9.00	
7456.98	90.053	279.500	7037.00†	-121.78	383.64	140.31	9.00	End of 3D Arc
7520.00†	90.053	279.500	7036.94	-59.19	394.04	78.15	0.00	
7606.98	90.053	279.500	7036.86	27.18	408.40	-7.64	0.00	End of Tangent
7620.00†	90.053	279.240	7036.85	40.12	410.52	-20.48	2.00	
7720.00†	90.053	277.240	7036.76	139.65	424.85	-119.45	2.00	
7820.00†	90.053	275.240	7036.66	239.46	435.72	-218.85	2.00	
7920.00†	90.053	273.240	7036.57	339.42	443.11	-318.57	2.00	
8020.00†	90.053	271.240	7036.48	439.41	447.02	-418.49	2.00	
8076.94	90.052	270.101	7036.43	496.31	447.68	-475.42	2.00	End of 3D Arc
8120.00†	90.052	270.101	7036.39	539.33	447.76	-518.48	0.00	
8220.00†	90.052	270.101	7036.30	639.22	447.94	-618.48	0.00	



# Planned Wellpath Report

## GREELEY-ROTHER FEDERAL 33N-2C-L PWP (REV-A.0)

Page 5 of 9



REFERENCE WELLPATH IDENTIFICATION			
Operator	SRC ENERGY	Slot	SLOT#18 GREELEY-ROTHER FEDERAL 33N-2C-L (1063'FSL & 294'FEL, SEC.01)
Area	COLORADO	Well	GREELEY-ROTHER FEDERAL 33N-2C-L
Field	WELD COUNTY (NAD83,TRUE NORTH)	Wellbore	GREELEY-ROTHER FEDERAL 33N-2C-L PWB
Facility	SEC.01-T05N-R67W		

WELLPATH DATA (181 stations) † = interpolated/extrapolated station								
MD [ft]	Inclination [°]	Azimuth [°]	TVD [ft]	Vert Sect [ft]	North [ft]	East [ft]	DLS [°/100ft]	Comments
8320.00†	90.052	270.101	7036.21	739.12	448.11	-718.48	0.00	
8420.00†	90.052	270.101	7036.11	839.01	448.29	-818.48	0.00	
8520.00†	90.052	270.101	7036.02	938.90	448.46	-918.48	0.00	
8620.00†	90.052	270.101	7035.93	1038.80	448.64	-1018.48	0.00	
8720.00†	90.052	270.101	7035.84	1138.69	448.82	-1118.48	0.00	
8820.00†	90.052	270.101	7035.75	1238.58	448.99	-1218.48	0.00	
8920.00†	90.052	270.101	7035.66	1338.48	449.17	-1318.48	0.00	
9020.00†	90.052	270.101	7035.56	1438.37	449.34	-1418.48	0.00	
9120.00†	90.052	270.101	7035.47	1538.26	449.52	-1518.48	0.00	
9220.00†	90.052	270.101	7035.38	1638.16	449.69	-1618.48	0.00	
9320.00†	90.052	270.101	7035.29	1738.05	449.87	-1718.48	0.00	
9420.00†	90.052	270.101	7035.20	1837.94	450.05	-1818.48	0.00	
9520.00†	90.052	270.101	7035.11	1937.84	450.22	-1918.48	0.00	
9620.00†	90.052	270.101	7035.01	2037.73	450.40	-2018.48	0.00	
9720.00†	90.052	270.101	7034.92	2137.62	450.57	-2118.48	0.00	
9820.00†	90.052	270.101	7034.83	2237.52	450.75	-2218.48	0.00	
9920.00†	90.052	270.101	7034.74	2337.41	450.93	-2318.48	0.00	
10020.00†	90.052	270.101	7034.65	2437.31	451.10	-2418.48	0.00	
10120.00†	90.052	270.101	7034.56	2537.20	451.28	-2518.48	0.00	
10220.00†	90.052	270.101	7034.46	2637.09	451.45	-2618.48	0.00	
10320.00†	90.052	270.101	7034.37	2736.99	451.63	-2718.48	0.00	
10420.00†	90.052	270.101	7034.28	2836.88	451.81	-2818.48	0.00	
10520.00†	90.052	270.101	7034.19	2936.77	451.98	-2918.48	0.00	
10620.00†	90.052	270.101	7034.10	3036.67	452.16	-3018.48	0.00	
10720.00†	90.052	270.101	7034.01	3136.56	452.33	-3118.48	0.00	
10820.00†	90.052	270.101	7033.92	3236.45	452.51	-3218.48	0.00	
10920.00†	90.052	270.101	7033.82	3336.35	452.68	-3318.48	0.00	
11020.00†	90.052	270.101	7033.73	3436.24	452.86	-3418.48	0.00	
11120.00†	90.052	270.101	7033.64	3536.13	453.04	-3518.48	0.00	
11220.00†	90.052	270.101	7033.55	3636.03	453.21	-3618.48	0.00	



# Planned Wellpath Report

## GREELEY-ROTHER FEDERAL 33N-2C-L PWP (REV-A.0)

Page 6 of 9



REFERENCE WELLPATH IDENTIFICATION			
Operator	SRC ENERGY	Slot	SLOT#18 GREELEY-ROTHER FEDERAL 33N-2C-L (1063'FSL & 294'FEL, SEC.01)
Area	COLORADO	Well	GREELEY-ROTHER FEDERAL 33N-2C-L
Field	WELD COUNTY (NAD83,TRUE NORTH)	Wellbore	GREELEY-ROTHER FEDERAL 33N-2C-L PWB
Facility	SEC.01-T05N-R67W		

WELLPATH DATA (181 stations) † = interpolated/extrapolated station								
MD [ft]	Inclination [°]	Azimuth [°]	TVD [ft]	Vert Sect [ft]	North [ft]	East [ft]	DLS [°/100ft]	Comments
11320.00†	90.052	270.101	7033.46	3735.92	453.39	-3718.48	0.00	
11420.00†	90.052	270.101	7033.37	3835.81	453.56	-3818.48	0.00	
11520.00†	90.052	270.101	7033.27	3935.71	453.74	-3918.48	0.00	
11620.00†	90.052	270.101	7033.18	4035.60	453.92	-4018.48	0.00	
11720.00†	90.052	270.101	7033.09	4135.50	454.09	-4118.48	0.00	
11820.00†	90.052	270.101	7033.00	4235.39	454.27	-4218.48	0.00	
11920.00†	90.052	270.101	7032.91	4335.28	454.44	-4318.48	0.00	
12020.00†	90.052	270.101	7032.82	4435.18	454.62	-4418.48	0.00	
12120.00†	90.052	270.101	7032.72	4535.07	454.79	-4518.48	0.00	
12220.00†	90.052	270.101	7032.63	4634.96	454.97	-4618.48	0.00	
12320.00†	90.052	270.101	7032.54	4734.86	455.15	-4718.48	0.00	
12420.00†	90.052	270.101	7032.45	4834.75	455.32	-4818.48	0.00	
12520.00†	90.052	270.101	7032.36	4934.64	455.50	-4918.48	0.00	
12620.00†	90.052	270.101	7032.27	5034.54	455.67	-5018.48	0.00	
12720.00†	90.052	270.101	7032.18	5134.43	455.85	-5118.48	0.00	
12820.00†	90.052	270.101	7032.08	5234.32	456.03	-5218.47	0.00	
12920.00†	90.052	270.101	7031.99	5334.22	456.20	-5318.47	0.00	
13020.00†	90.052	270.101	7031.90	5434.11	456.38	-5418.47	0.00	
13120.00†	90.052	270.101	7031.81	5534.00	456.55	-5518.47	0.00	
13220.00†	90.052	270.101	7031.72	5633.90	456.73	-5618.47	0.00	
13320.00†	90.052	270.101	7031.63	5733.79	456.91	-5718.47	0.00	
13420.00†	90.052	270.101	7031.53	5833.69	457.08	-5818.47	0.00	
13520.00†	90.052	270.101	7031.44	5933.58	457.26	-5918.47	0.00	
13620.00†	90.052	270.101	7031.35	6033.47	457.43	-6018.47	0.00	
13720.00†	90.052	270.101	7031.26	6133.37	457.61	-6118.47	0.00	
13820.00†	90.052	270.101	7031.17	6233.26	457.78	-6218.47	0.00	
13920.00†	90.052	270.101	7031.08	6333.15	457.96	-6318.47	0.00	
14020.00†	90.052	270.101	7030.98	6433.05	458.14	-6418.47	0.00	
14120.00†	90.052	270.101	7030.89	6532.94	458.31	-6518.47	0.00	
14220.00†	90.052	270.101	7030.80	6632.83	458.49	-6618.47	0.00	





# Planned Wellpath Report

## GREELEY-ROTHER FEDERAL 33N-2C-L PWP (REV-A.0)

Page 7 of 9



REFERENCE WELLPATH IDENTIFICATION			
Operator	SRC ENERGY	Slot	SLOT#18 GREELEY-ROTHER FEDERAL 33N-2C-L (1063'FSL & 294'FEL, SEC.01)
Area	COLORADO	Well	GREELEY-ROTHER FEDERAL 33N-2C-L
Field	WELD COUNTY (NAD83,TRUE NORTH)	Wellbore	GREELEY-ROTHER FEDERAL 33N-2C-L PWB
Facility	SEC.01-T05N-R67W		

WELLPATH DATA (181 stations) † = interpolated/extrapolated station								
MD [ft]	Inclination [°]	Azimuth [°]	TVD [ft]	Vert Sect [ft]	North [ft]	East [ft]	DLS [°/100ft]	Comments
14320.00†	90.052	270.101	7030.71	6732.73	458.66	-6718.47	0.00	
14420.00†	90.052	270.101	7030.62	6832.62	458.84	-6818.47	0.00	
14520.00†	90.052	270.101	7030.53	6932.51	459.02	-6918.47	0.00	
14620.00†	90.052	270.101	7030.43	7032.41	459.19	-7018.47	0.00	
14720.00†	90.052	270.101	7030.34	7132.30	459.37	-7118.47	0.00	
14820.00†	90.052	270.101	7030.25	7232.19	459.54	-7218.47	0.00	
14920.00†	90.052	270.101	7030.16	7332.09	459.72	-7318.47	0.00	
15020.00†	90.052	270.101	7030.07	7431.98	459.89	-7418.47	0.00	
15120.00†	90.052	270.101	7029.98	7531.88	460.07	-7518.47	0.00	
15220.00†	90.052	270.101	7029.89	7631.77	460.25	-7618.47	0.00	
15320.00†	90.052	270.101	7029.79	7731.66	460.42	-7718.47	0.00	
15420.00†	90.052	270.101	7029.70	7831.56	460.60	-7818.47	0.00	
15520.00†	90.052	270.101	7029.61	7931.45	460.77	-7918.47	0.00	
15620.00†	90.052	270.101	7029.52	8031.34	460.95	-8018.47	0.00	
15720.00†	90.052	270.101	7029.43	8131.24	461.13	-8118.47	0.00	
15820.00†	90.052	270.101	7029.34	8231.13	461.30	-8218.47	0.00	
15920.00†	90.052	270.101	7029.24	8331.02	461.48	-8318.47	0.00	
16020.00†	90.052	270.101	7029.15	8430.92	461.65	-8418.47	0.00	
16120.00†	90.052	270.101	7029.06	8530.81	461.83	-8518.47	0.00	
16220.00†	90.052	270.101	7028.97	8630.70	462.01	-8618.47	0.00	
16320.00†	90.052	270.101	7028.88	8730.60	462.18	-8718.47	0.00	
16420.00†	90.052	270.101	7028.79	8830.49	462.36	-8818.47	0.00	
16520.00†	90.052	270.101	7028.69	8930.39	462.53	-8918.47	0.00	
16620.00†	90.052	270.101	7028.60	9030.28	462.71	-9018.47	0.00	
16720.00†	90.052	270.101	7028.51	9130.17	462.88	-9118.47	0.00	
16820.00†	90.052	270.101	7028.42	9230.07	463.06	-9218.47	0.00	
16920.00†	90.052	270.101	7028.33	9329.96	463.24	-9318.47	0.00	
17020.00†	90.052	270.101	7028.24	9429.85	463.41	-9418.47	0.00	
17120.00†	90.052	270.101	7028.15	9529.75	463.59	-9518.47	0.00	
17220.00†	90.052	270.101	7028.05	9629.64	463.76	-9618.47	0.00	



# Planned Wellpath Report

## GREELEY-ROTHER FEDERAL 33N-2C-L PWP (REV-A.0)

Page 8 of 9



REFERENCE WELLPATH IDENTIFICATION			
Operator	SRC ENERGY	Slot	SLOT#18 GREELEY-ROTHER FEDERAL 33N-2C-L (1063'FSL & 294'FEL, SEC.01)
Area	COLORADO	Well	GREELEY-ROTHER FEDERAL 33N-2C-L
Field	WELD COUNTY (NAD83,TRUE NORTH)	Wellbore	GREELEY-ROTHER FEDERAL 33N-2C-L PWB
Facility	SEC.01-T05N-R67W		

WELLPATH DATA (181 stations)								
MD [ft]	Inclination [°]	Azimuth [°]	TVD [ft]	Vert Sect [ft]	North [ft]	East [ft]	DLS [°/100ft]	Comments
17278.45	90.052	270.101	7028.00 <sup>2</sup>	9688.03	463.87	-9676.92	0.00	End of Tangent

HOLE & CASING SECTIONS									
- Ref Wellbore: GREELEY-ROTHER FEDERAL 33N-2C-L PWB					Ref Wellpath: GREELEY-ROTHER FEDERAL 33N-2C-L PWP (REV-A.0)				
String/Diameter	Start MD [ft]	End MD [ft]	Interval [ft]	Start TVD [ft]	End TVD [ft]	Start N/S [ft]	Start E/W [ft]	End N/S [ft]	End E/W [ft]
13.5in Open Hole	20.00	1750.00	1730.00	20.00	1740.06	0.00	0.00	45.18	145.47
9.625in Casing Surface	20.00	1750.00	1730.00	20.00	1740.06	0.00	0.00	45.18	145.47
8.5in Open Hole	1750.00	17278.45	15528.45	1740.06	7028.00	45.18	145.47	463.87	-9676.92

TARGETS									
Name	MD [ft]	TVD [ft]	North [ft]	East [ft]	Grid East [US ft]	Grid North [US ft]	Latitude	Longitude	Shape
SEC.01-T05N-R67W		22.00	1304.65	-1.16	3185545.50	1399477.36	40°25'40.991"N	104°50'00.640"W	polygon
SEC.02-T05N-R67W		22.00	1304.65	-1.16	3185545.50	1399477.36	40°25'40.991"N	104°50'00.640"W	polygon
2) GREELEY ROTHE FEDERAL 33N-2C-L BHL ON PLAT (1620'FSL & 150'FWL, SEC.02)		7028.00	463.87	-9676.89	3175876.76	1398563.91	40°25'32.664"N	104°52'05.750"W	circle
1) GREELEY ROTHE FEDERAL 33N-2C-L TOP OF PROD ON PLAT (1441'FSL & 150'FEL, SEC.01)		7037.00	383.64	140.29	3185693.86	1398557.48	40°25'31.890"N	104°49'58.811"W	circle





# Planned Wellpath Report

## GREELEY-ROTHER FEDERAL 33N-2C-L PWP (REV-A.0)

Page 9 of 9



REFERENCE WELLPATH IDENTIFICATION			
Operator	SRC ENERGY	Slot	SLOT#18 GREELEY-ROTHER FEDERAL 33N-2C-L (1063'FSL & 294'FEL, SEC.01)
Area	COLORADO	Well	GREELEY-ROTHER FEDERAL 33N-2C-L
Field	WELD COUNTY (NAD83,TRUE NORTH)	Wellbore	GREELEY-ROTHER FEDERAL 33N-2C-L PWB
Facility	SEC.01-T05N-R67W		

SURVEY PROGRAM -				
Ref Wellbore: GREELEY-ROTHER FEDERAL 33N-2C-L PWB      Ref Wellpath: GREELEY-ROTHER FEDERAL 33N-2C-L PWP (REV-A.0)				
Start MD [ft]	End MD [ft]	Positional Uncertainty Model	Log Name/Comment	Wellbore
20.00	1750.00	Custom BHI NaviTrak (Standard Rotating+Axial Corr) (Rockies 0.03Gt model)		GREELEY-ROTHER FEDERAL 33N-2C-L PWB
1750.00	17278.45	Custom BHI AutoTrak Curve (IFR1, Short) (Rockies 0.03Gt model)		GREELEY-ROTHER FEDERAL 33N-2C-L PWB