

Location:	COLORADO	Slot:	SLOT#19 GREELEY-ROTHE FEDERAL 33N-2B-L (1043FSL & 294FEL, SEC.01)
Field:	WELD COUNTY (NAD83,TRUE NORTH)	Well:	GREELEY-ROTHE FEDERAL 33N-2B-L
Facility:	SEC.01-T05N-R67W	Wellbore:	GREELEY-ROTHE FEDERAL 33N-2B-L PWB

Location:	COLORADO	Slot:	SLOT#19 GREELEY-ROTHER FEDERAL 33N-2B-L (1043FSL & 294FEL, SEC.01)
Field:	WELD COUNTY (NAD83, TRUE NORTH)	Well:	GREELEY-ROTHER FEDERAL 33N-2B-L
Facility:	SEC.01-T05N-R67W	Wellbore:	GREELEY-ROTHER FEDERAL 33N-2B-L PWB

Plot reference wellpath is GREELEY-ROTHE FEDERAL 33N-28-L PWP (REV-A.0)

Grid System: NAD83 / Lambert Colorado SP, Northern Zone (501), US feet

True vertical depths are referenced to PRECISION 462 (20') (RKB)

\* = Wellpath was transformed from a different geodetic datum

Measured depths are referenced to PRECISION 462 (20') (RKB)

\* = Wellpath was transformed from a different geodetic datum

Measured depths are referenced to PRECISION 462 (20') (RKB)

North Reference: True north

PRECISION 462 (20') (RKB) to Mean Sea Level: 4892 feet

Scale: True distance

Mean Sea Level to Mud line (At Slot: SLOT#19 GREELEY-ROTHE FEDERAL 33N-2B-L (1043FSL & 294FEL, SEC.01)): 0 feet

Depths are in feet

Coordinates are in feet referenced to Slo

Created by: doddanna on 2017-10-04

Database: WellArchitectDB

Facility Name				Grid East (US ft)	Grid North (US ft)	Latitude	Longitude
SEC.01-T05N-RE7W				318545.499	1394477.365	40°25'40.991"N	104°30'00.640"W
Box	Local N (ft)	Local E (ft)	Grid East (US ft)	Grid North (US ft)	Latitude	Longitude	
SLOTF19 GREILEY-ROTHE FEDERAL 33N-2B-L (1043FSL & 204FEL, SEC.01)	-1324.89	1.39	3185566.847	1398162.771	40°25'27.901"N	104°30'00.622"W	
PRECISION 452 (20) (R08) to Mud line (At Box: SLOTF19 GREILEY-ROTHE FEDERAL 33N-2B-L (1043FSL & 204FEL, SEC.01))						48932f	
Mean Sea Level to Mud line (At Box: SLOTF19 GREILEY-ROTHE FEDERAL 33N-2B-L (1043FSL & 204FEL, SEC.01))						0f1	
PRECISION 452 (20) (R08) to Mean Sea Level						48932f	

Start MD (ft)	End MD (ft)	Tool	Model	Log Name/Comment	Wellbore
20.00	1750.00	BHI NavTrak	Custom BHI NavTrak (Standard Rotating+Ketal Corr) (Rockies 0.03Gt model)		GREELY-ROTHE FEDERAL 33N-28-L-PWB
1750.00	17285.49	BHI AutoTrak Curve	Custom BHI AutoTrak Curve (FR1, Short) (Rockies 0.03Gt model)		GREELY-ROTHE FEDERAL 33N-28-L-PWB

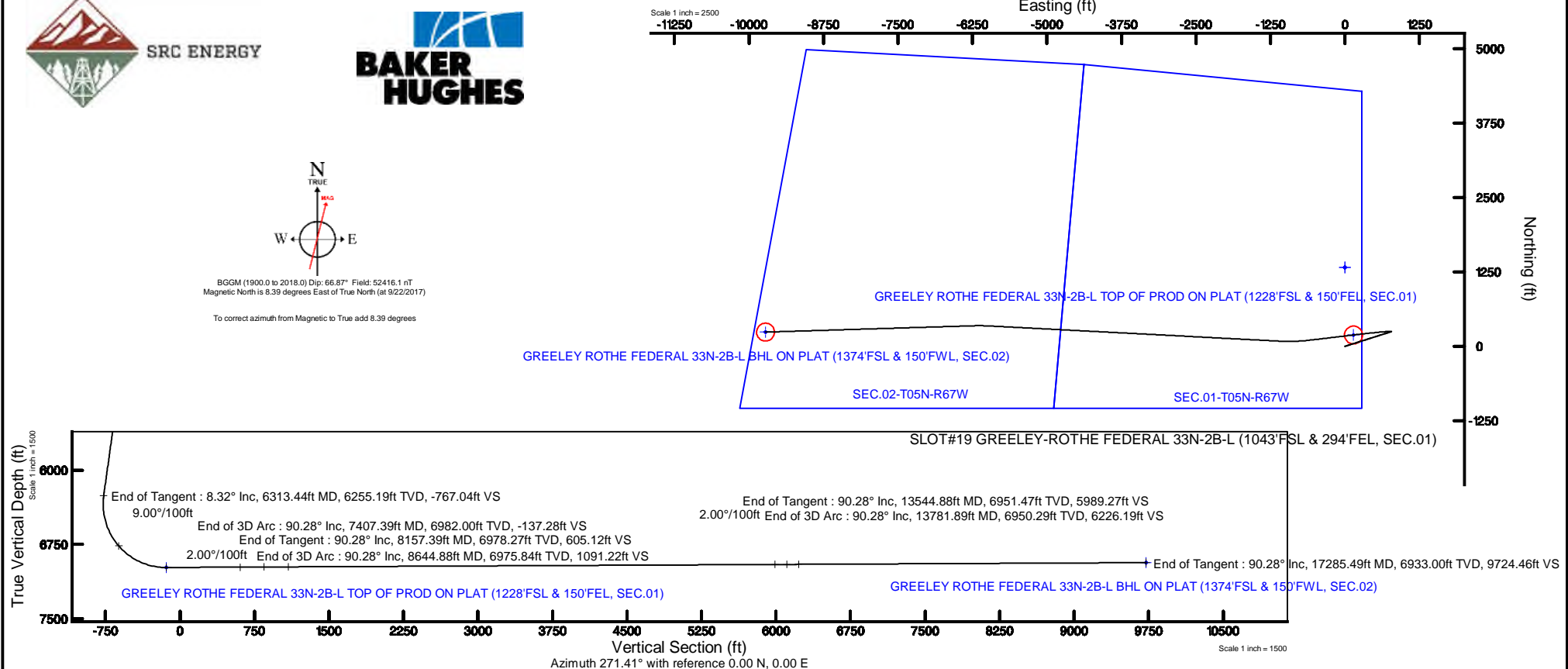


**SRC ENERGY**



BGM (1900.0 to 2018.0) Dip: 66.87° Field: 52416.1 nT  
Magnetic North is 8.39 degrees East of True North (at 9/22/2017)

To correct azimuth from Magnetic to True add 8.39 degrees



GREELEY-ROTHE\_FEDERAL\_33N-2B-L\_PWP\_\_REV-A.0\_.las

~VERSION INFORMATION

VERS. 2.0 : CWLS LOG ASCII STANDARD-VERSION 2.0

WRAP. NO : ASCII DATA SECTION CONTAINS ONE ROW PER WELLPATH STATION

~WELL INFORMATION

#MNEM	.UNITS	DATA	:DESCRIPTION
#----	.-----	----	:-----
STRT	.ft	0.00	:START MD
STOP	.ft	17285.49	:STOP MD
STEP	.ft	0.0	:STEP (non-uniform increment)
NULL	.	-999.99	:NULL
COMP	.	SRC ENERGY	:OPERATOR
WELL	.	GREELEY-ROTHE FEDERAL 33N-2B-L	:WELL
FLD	.	WELD COUNTY (NAD83,TRUE NORTH)	:FIELD
LOC	.	COLORADO	:AREA (aka: Location)
CNTY	.	N/A	:COUNTY
STAT	.	N/A	:STATE
CTRY	.	N/A	:COUNTRY
SRVC	.	Baker Hughes	:CONTRACTOR
DATE	.	10/04/2017	:LOG REV DATE
API	.		:API NUMBER

~OTHER INFORMATION

#Software: WellArchitect(R) Version 5.0

#MNEM	.UNITS	DATA	:DESCRIPTION
#----	.-----	----	:-----
WPTYPE	.	PLANNED WELLPATH	:WELLPATH TYPE
FACILITY	.	SEC.01-T05N-R67W	:FACILITY
SLOT	.	SLOT#19 GREELEY-ROTHE FEDERAL 33N-2B-L (1043'FSL & 294'FEL, SEC.01)	:SLOT
WELLBORE	.	GREELEY-ROTHE FEDERAL 33N-2B-L PWB	:WELLBORE
WELLPATH	.	GREELEY-ROTHE FEDERAL 33N-2B-L PWP (REV-A.0)	:WELLPATH
MDREFPT	.	PRECISION 462 (20') (RKB)	:MD REFERENCE POINT
TVDREFPT	.	PRECISION 462 (20') (RKB)	:TVD REFERENCE POINT
LCLREFPT	.	Slot	:LOCAL COORDINATE REFERENCE PT

GREELEY-ROTHER\_FEDERAL\_33N-2B-L\_PWP\_\_REV-A.0\_.las

VSAZIMUTH.deg 271.41 :VERTICAL SECTION AZIMUTH  
 VSORIGIN .ft 0.00 :VERTICAL SECTION ORIGIN NORTH  
 VSORIGE .ft 0.00 :VERTICAL SECTION ORIGIN EAST

~CURVE (WELLPATH) INFORMATION

#MNEM .UNITS :DESCRIPTION  
 #---- .----- :-----  
 DEPT .ft :MEASURED DEPTH  
 INC .deg :INCLINATION  
 AZI .deg :AZIMUTH  
 TVD .ft :TRUE VERTICAL DEPTH  
 SECT .ft :CROSS SECTION (CURTAIN/VERTICAL)  
 LOCALN .ft :LOCAL NORTH  
 LOCALE .ft :LOCAL EAST  
 LAT .deg :LATITUDE  
 LONG .deg :LONGITUDE  
 DLS .deg/100ft :DOGLEG SEVERITY

~ASCII DATA

0.00	0.00	72.44	0.00	0.00	0.00	0.00	40.4244169	-104.8335061	0.00
20.00	0.00	72.44	20.00	0.00	0.00	0.00	40.4244169	-104.8335061	0.00
120.00	0.00	72.44	120.00	0.00	0.00	0.00	40.4244169	-104.8335061	0.00
220.00	0.00	72.44	220.00	0.00	0.00	0.00	40.4244169	-104.8335061	0.00
320.00	0.00	72.44	320.00	0.00	0.00	0.00	40.4244169	-104.8335061	0.00
420.00	0.00	72.44	420.00	0.00	0.00	0.00	40.4244169	-104.8335061	0.00
500.00	0.00	72.44	500.00	0.00	0.00	0.00	40.4244169	-104.8335061	0.00
520.00	0.40	72.44	520.00	-0.07	0.02	0.07	40.4244170	-104.8335059	2.00
620.00	2.40	72.44	619.96	-2.38	0.76	2.40	40.4244190	-104.8334975	2.00
720.00	4.40	72.44	719.78	-7.98	2.55	8.05	40.4244239	-104.8334772	2.00
820.00	6.40	72.44	819.33	-16.88	5.39	17.02	40.4244317	-104.8334450	2.00
915.95	8.32	72.44	914.49	-28.51	9.09	28.74	40.4244419	-104.8334029	2.00
920.00	8.32	72.44	918.50	-29.06	9.27	29.30	40.4244424	-104.8334009	0.00
1020.00	8.32	72.44	1017.45	-42.74	13.64	43.09	40.4244544	-104.8333513	0.00
1120.00	8.32	72.44	1116.39	-56.43	18.00	56.89	40.4244664	-104.8333018	0.00

GREELEY-ROTHE\_FEDERAL\_33N-2B-L\_PWP\_\_REV-A.0\_.las

1220.00	8.32	72.44	1215.34	-70.11	22.37	70.68	40.4244783	-104.8332522	0.00
1320.00	8.32	72.44	1314.29	-83.79	26.73	84.47	40.4244903	-104.8332027	0.00
1420.00	8.32	72.44	1413.24	-97.48	31.10	98.27	40.4245023	-104.8331532	0.00
1520.00	8.32	72.44	1512.18	-111.16	35.46	112.06	40.4245143	-104.8331036	0.00
1620.00	8.32	72.44	1611.13	-124.84	39.83	125.86	40.4245263	-104.8330541	0.00
1720.00	8.32	72.44	1710.08	-138.52	44.19	139.65	40.4245382	-104.8330045	0.00
1820.00	8.32	72.44	1809.03	-152.21	48.56	153.45	40.4245502	-104.8329550	0.00
1920.00	8.32	72.44	1907.98	-165.89	52.92	167.24	40.4245622	-104.8329054	0.00
2020.00	8.32	72.44	2006.92	-179.57	57.29	181.03	40.4245742	-104.8328559	0.00
2120.00	8.32	72.44	2105.87	-193.26	61.65	194.83	40.4245862	-104.8328063	0.00
2220.00	8.32	72.44	2204.82	-206.94	66.02	208.62	40.4245982	-104.8327568	0.00
2320.00	8.32	72.44	2303.77	-220.62	70.38	222.42	40.4246101	-104.8327073	0.00
2420.00	8.32	72.44	2402.71	-234.31	74.75	236.21	40.4246221	-104.8326577	0.00
2520.00	8.32	72.44	2501.66	-247.99	79.11	250.01	40.4246341	-104.8326082	0.00
2620.00	8.32	72.44	2600.61	-261.67	83.48	263.80	40.4246461	-104.8325586	0.00
2720.00	8.32	72.44	2699.56	-275.35	87.84	277.59	40.4246581	-104.8325091	0.00
2820.00	8.32	72.44	2798.51	-289.04	92.21	291.39	40.4246700	-104.8324595	0.00
2920.00	8.32	72.44	2897.45	-302.72	96.57	305.18	40.4246820	-104.8324100	0.00
3020.00	8.32	72.44	2996.40	-316.40	100.94	318.98	40.4246940	-104.8323604	0.00
3120.00	8.32	72.44	3095.35	-330.09	105.30	332.77	40.4247060	-104.8323109	0.00
3220.00	8.32	72.44	3194.30	-343.77	109.67	346.57	40.4247180	-104.8322614	0.00
3320.00	8.32	72.44	3293.24	-357.45	114.03	360.36	40.4247299	-104.8322118	0.00
3420.00	8.32	72.44	3392.19	-371.13	118.40	374.15	40.4247419	-104.8321623	0.00
3520.00	8.32	72.44	3491.14	-384.82	122.76	387.95	40.4247539	-104.8321127	0.00
3620.00	8.32	72.44	3590.09	-398.50	127.13	401.74	40.4247659	-104.8320632	0.00
3720.00	8.32	72.44	3689.04	-412.18	131.49	415.54	40.4247779	-104.8320136	0.00
3820.00	8.32	72.44	3787.98	-425.87	135.86	429.33	40.4247898	-104.8319641	0.00
3920.00	8.32	72.44	3886.93	-439.55	140.22	443.12	40.4248018	-104.8319145	0.00
4020.00	8.32	72.44	3985.88	-453.23	144.59	456.92	40.4248138	-104.8318650	0.00
4120.00	8.32	72.44	4084.83	-466.91	148.95	470.71	40.4248258	-104.8318155	0.00
4220.00	8.32	72.44	4183.77	-480.60	153.32	484.51	40.4248378	-104.8317659	0.00
4320.00	8.32	72.44	4282.72	-494.28	157.68	498.30	40.4248498	-104.8317164	0.00
4420.00	8.32	72.44	4381.67	-507.96	162.05	512.10	40.4248617	-104.8316668	0.00
4520.00	8.32	72.44	4480.62	-521.65	166.41	525.89	40.4248737	-104.8316173	0.00

GREELEY-ROTHE\_FEDERAL\_33N-2B-L\_PWP\_\_REV-A.0\_.las

4620.00	8.32	72.44	4579.57	-535.33	170.78	539.68	40.4248857	-104.8315677	0.00
4720.00	8.32	72.44	4678.51	-549.01	175.14	553.48	40.4248977	-104.8315182	0.00
4820.00	8.32	72.44	4777.46	-562.70	179.51	567.27	40.4249097	-104.8314686	0.00
4920.00	8.32	72.44	4876.41	-576.38	183.87	581.07	40.4249216	-104.8314191	0.00
5020.00	8.32	72.44	4975.36	-590.06	188.24	594.86	40.4249336	-104.8313695	0.00
5120.00	8.32	72.44	5074.30	-603.74	192.60	608.66	40.4249456	-104.8313200	0.00
5220.00	8.32	72.44	5173.25	-617.43	196.97	622.45	40.4249576	-104.8312705	0.00
5320.00	8.32	72.44	5272.20	-631.11	201.33	636.24	40.4249696	-104.8312209	0.00
5420.00	8.32	72.44	5371.15	-644.79	205.70	650.04	40.4249815	-104.8311714	0.00
5520.00	8.32	72.44	5470.10	-658.48	210.06	663.83	40.4249935	-104.8311218	0.00
5620.00	8.32	72.44	5569.04	-672.16	214.43	677.63	40.4250055	-104.8310723	0.00
5720.00	8.32	72.44	5667.99	-685.84	218.79	691.42	40.4250175	-104.8310227	0.00
5820.00	8.32	72.44	5766.94	-699.52	223.16	705.22	40.4250295	-104.8309732	0.00
5920.00	8.32	72.44	5865.89	-713.21	227.52	719.01	40.4250414	-104.8309236	0.00
6020.00	8.32	72.44	5964.83	-726.89	231.89	732.80	40.4250534	-104.8308741	0.00
6120.00	8.32	72.44	6063.78	-740.57	236.25	746.60	40.4250654	-104.8308245	0.00
6220.00	8.32	72.44	6162.73	-754.26	240.62	760.39	40.4250774	-104.8307750	0.00
6313.44	8.32	72.44	6255.19	-767.04	244.70	773.28	40.4250886	-104.8307287	0.00
6320.00	7.74	71.61	6261.68	-767.91	244.98	774.15	40.4250894	-104.8307256	9.00
6420.00	2.12	311.15	6361.40	-772.83	248.33	779.16	40.4250985	-104.8307076	9.00
6520.00	10.54	271.74	6460.73	-762.25	249.83	768.61	40.4251027	-104.8307455	9.00
6620.00	19.48	267.71	6557.22	-736.41	249.44	742.76	40.4251016	-104.8308383	9.00
6720.00	28.46	266.16	6648.50	-695.96	247.17	702.24	40.4250954	-104.8309839	9.00
6820.00	37.45	265.31	6732.33	-641.89	243.08	648.05	40.4250841	-104.8311785	9.00
6920.00	46.44	264.75	6806.63	-575.53	237.27	581.53	40.4250682	-104.8314174	9.00
7020.00	55.44	264.34	6869.58	-498.53	229.88	504.32	40.4250479	-104.8316947	9.00
7120.00	64.43	264.01	6919.63	-412.76	221.09	418.31	40.4250238	-104.8320037	9.00
7220.00	73.43	263.73	6955.55	-320.35	211.13	325.63	40.4249965	-104.8323365	9.00
7320.00	82.42	263.47	6976.45	-223.57	200.23	228.55	40.4249666	-104.8326852	9.00
7407.39	90.29	263.25	6982.00	-137.28	190.15	141.99	40.4249389	-104.8329961	9.00
7420.00	90.29	263.25	6981.94	-124.80	188.67	129.47	40.4249348	-104.8330411	0.00
7520.00	90.29	263.25	6981.44	-25.81	176.92	30.17	40.4249026	-104.8333978	0.00
7620.00	90.29	263.25	6980.94	73.17	165.16	-69.14	40.4248703	-104.8337544	0.00
7720.00	90.29	263.25	6980.45	172.16	153.41	-168.45	40.4248380	-104.8341111	0.00

GREELEY-ROTHE\_FEDERAL\_33N-2B-L\_PWP\_\_REV-A.0\_.las

7820.00	90.29	263.25	6979.95	271.15	141.66	-267.75	40.4248058	-104.8344678	0.00
7920.00	90.29	263.25	6979.45	370.14	129.90	-367.06	40.4247735	-104.8348245	0.00
8020.00	90.29	263.25	6978.95	469.12	118.15	-466.36	40.4247412	-104.8351811	0.00
8120.00	90.29	263.25	6978.46	568.11	106.39	-565.67	40.4247090	-104.8355378	0.00
8157.39	90.29	263.25	6978.27	605.12	102.00	-602.80	40.4246969	-104.8356712	0.00
8220.00	90.29	264.50	6977.96	667.19	95.32	-665.05	40.4246786	-104.8358948	2.00
8320.00	90.29	266.50	6977.46	766.65	87.48	-764.74	40.4246570	-104.8362528	2.00
8420.00	90.29	268.50	6976.96	866.41	83.12	-864.63	40.4246451	-104.8366116	2.00
8520.00	90.29	270.50	6976.46	966.35	82.25	-964.62	40.4246427	-104.8369707	2.00
8620.00	90.29	272.50	6975.96	1066.35	84.87	-1064.58	40.4246499	-104.8373298	2.00
8644.88	90.29	273.00	6975.84	1091.22	86.07	-1089.44	40.4246531	-104.8374190	2.00
8720.00	90.29	273.00	6975.46	1166.31	90.00	-1164.45	40.4246639	-104.8376885	0.00
8820.00	90.29	273.00	6974.97	1266.27	95.23	-1264.31	40.4246783	-104.8380471	0.00
8920.00	90.29	273.00	6974.47	1366.23	100.47	-1364.17	40.4246926	-104.8384058	0.00
9020.00	90.29	273.00	6973.97	1466.19	105.70	-1464.04	40.4247070	-104.8387645	0.00
9120.00	90.29	273.00	6973.48	1566.15	110.93	-1563.90	40.4247213	-104.8391232	0.00
9220.00	90.29	273.00	6972.98	1666.11	116.17	-1663.76	40.4247357	-104.8394818	0.00
9320.00	90.29	273.00	6972.48	1766.07	121.40	-1763.62	40.4247500	-104.8398405	0.00
9420.00	90.29	273.00	6971.98	1866.03	126.63	-1863.48	40.4247644	-104.8401992	0.00
9520.00	90.29	273.00	6971.49	1965.99	131.87	-1963.34	40.4247787	-104.8405578	0.00
9620.00	90.29	273.00	6970.99	2065.95	137.10	-2063.21	40.4247930	-104.8409165	0.00
9720.00	90.29	273.00	6970.49	2165.91	142.34	-2163.07	40.4248074	-104.8412752	0.00
9820.00	90.29	273.00	6969.99	2265.87	147.57	-2262.93	40.4248217	-104.8416339	0.00
9920.00	90.29	273.00	6969.50	2365.83	152.80	-2362.79	40.4248361	-104.8419925	0.00
10020.00	90.29	273.00	6969.00	2465.79	158.04	-2462.65	40.4248504	-104.8423512	0.00
10120.00	90.29	273.00	6968.50	2565.75	163.27	-2562.51	40.4248647	-104.8427099	0.00
10220.00	90.29	273.00	6968.00	2665.71	168.50	-2662.38	40.4248791	-104.8430686	0.00
10320.00	90.29	273.00	6967.51	2765.67	173.74	-2762.24	40.4248934	-104.8434273	0.00
10420.00	90.29	273.00	6967.01	2865.63	178.97	-2862.10	40.4249077	-104.8437859	0.00
10520.00	90.29	273.00	6966.51	2965.59	184.20	-2961.96	40.4249221	-104.8441446	0.00
10620.00	90.29	273.00	6966.01	3065.55	189.44	-3061.82	40.4249364	-104.8445033	0.00
10720.00	90.29	273.00	6965.52	3165.51	194.67	-3161.68	40.4249507	-104.8448620	0.00
10820.00	90.29	273.00	6965.02	3265.47	199.90	-3261.55	40.4249651	-104.8452206	0.00
10920.00	90.29	273.00	6964.52	3365.43	205.14	-3361.41	40.4249794	-104.8455793	0.00

GREELEY-ROTHE\_FEDERAL\_33N-2B-L\_PWP\_\_REV-A.0\_.las

11020.00	90.29	273.00	6964.02	3465.39	210.37	-3461.27	40.4249937	-104.8459380	0.00
11120.00	90.29	273.00	6963.53	3565.35	215.61	-3561.13	40.4250081	-104.8462967	0.00
11220.00	90.29	273.00	6963.03	3665.31	220.84	-3660.99	40.4250224	-104.8466553	0.00
11320.00	90.29	273.00	6962.53	3765.27	226.07	-3760.85	40.4250367	-104.8470140	0.00
11420.00	90.29	273.00	6962.03	3865.23	231.31	-3860.72	40.4250510	-104.8473727	0.00
11520.00	90.29	273.00	6961.54	3965.19	236.54	-3960.58	40.4250653	-104.8477314	0.00
11620.00	90.29	273.00	6961.04	4065.15	241.77	-4060.44	40.4250797	-104.8480900	0.00
11720.00	90.29	273.00	6960.54	4165.11	247.01	-4160.30	40.4250940	-104.8484487	0.00
11820.00	90.29	273.00	6960.05	4265.07	252.24	-4260.16	40.4251083	-104.8488074	0.00
11920.00	90.29	273.00	6959.55	4365.03	257.47	-4360.02	40.4251226	-104.8491661	0.00
12020.00	90.29	273.00	6959.05	4464.99	262.71	-4459.89	40.4251369	-104.8495248	0.00
12120.00	90.29	273.00	6958.55	4564.95	267.94	-4559.75	40.4251513	-104.8498834	0.00
12220.00	90.29	273.00	6958.06	4664.91	273.17	-4659.61	40.4251656	-104.8502421	0.00
12320.00	90.29	273.00	6957.56	4764.87	278.41	-4759.47	40.4251799	-104.8506008	0.00
12420.00	90.29	273.00	6957.06	4864.83	283.64	-4859.33	40.4251942	-104.8509595	0.00
12520.00	90.29	273.00	6956.56	4964.79	288.87	-4959.20	40.4252085	-104.8513182	0.00
12620.00	90.29	273.00	6956.07	5064.75	294.11	-5059.06	40.4252228	-104.8516768	0.00
12720.00	90.29	273.00	6955.57	5164.71	299.34	-5158.92	40.4252371	-104.8520355	0.00
12820.00	90.29	273.00	6955.07	5264.67	304.58	-5258.78	40.4252514	-104.8523942	0.00
12920.00	90.29	273.00	6954.57	5364.63	309.81	-5358.64	40.4252657	-104.8527529	0.00
13020.00	90.29	273.00	6954.08	5464.59	315.04	-5458.50	40.4252800	-104.8531116	0.00
13120.00	90.29	273.00	6953.58	5564.55	320.28	-5558.37	40.4252943	-104.8534702	0.00
13220.00	90.29	273.00	6953.08	5664.51	325.51	-5658.23	40.4253087	-104.8538289	0.00
13320.00	90.29	273.00	6952.58	5764.47	330.74	-5758.09	40.4253230	-104.8541876	0.00
13420.00	90.29	273.00	6952.09	5864.43	335.98	-5857.95	40.4253373	-104.8545463	0.00
13520.00	90.29	273.00	6951.59	5964.39	341.21	-5957.81	40.4253516	-104.8549050	0.00
13544.88	90.29	273.00	6951.47	5989.27	342.51	-5982.66	40.4253551	-104.8549942	0.00
13620.00	90.28	271.50	6951.09	6064.37	345.46	-6057.72	40.4253632	-104.8552638	2.00
13720.00	90.28	269.50	6950.60	6164.35	346.33	-6157.71	40.4253655	-104.8556229	2.00
13781.89	90.28	268.26	6950.29	6226.19	345.12	-6219.59	40.4253621	-104.8558452	2.00
13820.00	90.28	268.26	6950.10	6264.23	343.96	-6257.68	40.4253589	-104.8559820	0.00
13920.00	90.28	268.26	6949.61	6364.08	340.92	-6357.63	40.4253505	-104.8563410	0.00
14020.00	90.28	268.26	6949.12	6463.93	337.89	-6457.58	40.4253421	-104.8567000	0.00
14120.00	90.28	268.26	6948.62	6563.78	334.85	-6557.53	40.4253337	-104.8570590	0.00

GREELEY-ROTHE\_FEDERAL\_33N-2B-L\_PWP\_\_REV-A.0\_.las

14220.00	90.28	268.26	6948.13	6663.62	331.81	-6657.49	40.4253253	-104.8574180	0.00
14320.00	90.28	268.26	6947.63	6763.47	328.78	-6757.44	40.4253169	-104.8577770	0.00
14420.00	90.28	268.26	6947.14	6863.32	325.74	-6857.39	40.4253084	-104.8581360	0.00
14520.00	90.28	268.26	6946.65	6963.17	322.70	-6957.34	40.4253000	-104.8584950	0.00
14620.00	90.28	268.26	6946.15	7063.02	319.66	-7057.30	40.4252916	-104.8588540	0.00
14720.00	90.28	268.26	6945.66	7162.86	316.63	-7157.25	40.4252832	-104.8592130	0.00
14820.00	90.28	268.26	6945.17	7262.71	313.59	-7257.20	40.4252748	-104.8595720	0.00
14920.00	90.28	268.26	6944.67	7362.56	310.55	-7357.15	40.4252664	-104.8599310	0.00
15020.00	90.28	268.26	6944.18	7462.41	307.52	-7457.11	40.4252580	-104.8602900	0.00
15120.00	90.28	268.26	6943.69	7562.26	304.48	-7557.06	40.4252495	-104.8606490	0.00
15220.00	90.28	268.26	6943.19	7662.10	301.44	-7657.01	40.4252411	-104.8610080	0.00
15320.00	90.28	268.26	6942.70	7761.95	298.41	-7756.97	40.4252327	-104.8613670	0.00
15420.00	90.28	268.26	6942.21	7861.80	295.37	-7856.92	40.4252243	-104.8617260	0.00
15520.00	90.28	268.26	6941.71	7961.65	292.33	-7956.87	40.4252158	-104.8620850	0.00
15620.00	90.28	268.26	6941.22	8061.50	289.30	-8056.82	40.4252074	-104.8624440	0.00
15720.00	90.28	268.26	6940.73	8161.34	286.26	-8156.78	40.4251990	-104.8628030	0.00
15820.00	90.28	268.26	6940.23	8261.19	283.22	-8256.73	40.4251906	-104.8631620	0.00
15920.00	90.28	268.26	6939.74	8361.04	280.19	-8356.68	40.4251821	-104.8635210	0.00
16020.00	90.28	268.26	6939.25	8460.89	277.15	-8456.63	40.4251737	-104.8638800	0.00
16120.00	90.28	268.26	6938.75	8560.74	274.11	-8556.59	40.4251653	-104.8642390	0.00
16220.00	90.28	268.26	6938.26	8660.58	271.08	-8656.54	40.4251568	-104.8645980	0.00
16320.00	90.28	268.26	6937.76	8760.43	268.04	-8756.49	40.4251484	-104.8649570	0.00
16420.00	90.28	268.26	6937.27	8860.28	265.00	-8856.44	40.4251400	-104.8653160	0.00
16520.00	90.28	268.26	6936.78	8960.13	261.96	-8956.40	40.4251315	-104.8656750	0.00
16620.00	90.28	268.26	6936.28	9059.98	258.93	-9056.35	40.4251231	-104.8660339	0.00
16720.00	90.28	268.26	6935.79	9159.82	255.89	-9156.30	40.4251147	-104.8663929	0.00
16820.00	90.28	268.26	6935.30	9259.67	252.85	-9256.25	40.4251062	-104.8667519	0.00
16920.00	90.28	268.26	6934.80	9359.52	249.82	-9356.21	40.4250978	-104.8671109	0.00
17020.00	90.28	268.26	6934.31	9459.37	246.78	-9456.16	40.4250894	-104.8674699	0.00
17120.00	90.28	268.26	6933.82	9559.22	243.74	-9556.11	40.4250809	-104.8678289	0.00
17220.00	90.28	268.26	6933.32	9659.06	240.71	-9656.07	40.4250725	-104.8681879	0.00
17285.49	90.28	268.26	6933.00	9724.46	238.72	-9721.53	40.4250669	-104.8684231	0.00



# Planned Wellpath Report

## GREELEY-ROTHER FEDERAL 33N-2B-L PWP (REV-A.0)

Page 1 of 9



### REFERENCE WELLPATH IDENTIFICATION

Operator	SRC ENERGY	Slot	SLOT#19 GREELEY-ROTHER FEDERAL 33N-2B-L (1043'FSL & 294'FEL, SEC.01)
Area	COLORADO	Well	GREELEY-ROTHER FEDERAL 33N-2B-L
Field	WELD COUNTY (NAD83,TRUE NORTH)	Wellbore	GREELEY-ROTHER FEDERAL 33N-2B-L PWB
Facility	SEC.01-T05N-R67W		

### REPORT SETUP INFORMATION

Projection System	NAD83 / Lambert Colorado SP, Northern Zone (501), US feet	Software System	WellArchitect® 5.0
North Reference	True	User	Doddanna
Scale	0.999961	Report Generated	10/4/2017 at 2:29:50 PM
Convergence at slot	0.43° East	Database/Source file	WellArchitectDB/GREELEY-ROTHER FEDERAL_33N-2B-L_PWP__REV-A.0_.xml

### WELLPATH LOCATION

	Local coordinates		Grid coordinates		Geographic coordinates	
	North[ft]	East[ft]	Easting[US ft]	Northing[US ft]	Latitude	Longitude
Slot Location	-1324.69	1.39	3185556.85	1398152.77	40°25'27.901"N	104°50'00.622"W
Facility Reference Pt			3185545.50	1399477.36	40°25'40.991"N	104°50'00.640"W
Field Reference Pt			3171284.48	1426358.81	40°30'07.643"N	104°53'02.634"W

### WELLPATH DATUM

Calculation method	Minimum curvature	PRECISION 462 (20') (RKB) to Facility Vertical Datum	4892.00ft
Horizontal Reference Pt	Slot	PRECISION 462 (20') (RKB) to Mean Sea Level	4892.00ft
Vertical Reference Pt	PRECISION 462 (20') (RKB)	PRECISION 462 (20') (RKB) to Mud Line at Slot (SLOT#19 GREELEY-ROTHER FEDERAL 33N-2B-L (1043'FSL & 294'FEL, SEC.01))	4892.00ft
MD Reference Pt	PRECISION 462 (20') (RKB)	Section Origin	N 0.00, E 0.00 ft
Field Vertical Reference	Mean Sea Level	Section Azimuth	271.41°



# Planned Wellpath Report

## GREELEY-ROTHER FEDERAL 33N-2B-L PWP (REV-A.0)

Page 2 of 9



REFERENCE WELLPATH IDENTIFICATION			
Operator	SRC ENERGY	Slot	SLOT#19 GREELEY-ROTHER FEDERAL 33N-2B-L (1043'FSL & 294'FEL, SEC.01)
Area	COLORADO	Well	GREELEY-ROTHER FEDERAL 33N-2B-L
Field	WELD COUNTY (NAD83,TRUE NORTH)	Wellbore	GREELEY-ROTHER FEDERAL 33N-2B-L PWB
Facility	SEC.01-T05N-R67W		

WELLPATH DATA (183 stations) † = interpolated/extrapolated station								
MD [ft]	Inclination [°]	Azimuth [°]	TVD [ft]	Vert Sect [ft]	North [ft]	East [ft]	DLS [°/100ft]	Comments
0.00†	0.000	72.441	0.00	0.00	0.00	0.00	0.00	
20.00	0.000	72.441	20.00	0.00	0.00	0.00	0.00	Tie On
120.00†	0.000	72.441	120.00	0.00	0.00	0.00	0.00	
220.00†	0.000	72.441	220.00	0.00	0.00	0.00	0.00	
320.00†	0.000	72.441	320.00	0.00	0.00	0.00	0.00	
420.00†	0.000	72.441	420.00	0.00	0.00	0.00	0.00	
500.00	0.000	72.441	500.00	0.00	0.00	0.00	0.00	End of Tangent
520.00†	0.400	72.441	520.00	-0.07	0.02	0.07	2.00	
620.00†	2.400	72.441	619.96	-2.38	0.76	2.40	2.00	
720.00†	4.400	72.441	719.78	-7.98	2.55	8.05	2.00	
820.00†	6.400	72.441	819.33	-16.88	5.39	17.02	2.00	
915.95	8.319	72.441	914.49	-28.51	9.09	28.74	2.00	End of Build
920.00†	8.319	72.441	918.50	-29.06	9.27	29.30	0.00	
1020.00†	8.319	72.441	1017.45	-42.74	13.64	43.09	0.00	
1120.00†	8.319	72.441	1116.39	-56.43	18.00	56.89	0.00	
1220.00†	8.319	72.441	1215.34	-70.11	22.37	70.68	0.00	
1320.00†	8.319	72.441	1314.29	-83.79	26.73	84.47	0.00	
1420.00†	8.319	72.441	1413.24	-97.48	31.10	98.27	0.00	
1520.00†	8.319	72.441	1512.18	-111.16	35.46	112.06	0.00	
1620.00†	8.319	72.441	1611.13	-124.84	39.83	125.86	0.00	
1720.00†	8.319	72.441	1710.08	-138.52	44.19	139.65	0.00	
1820.00†	8.319	72.441	1809.03	-152.21	48.56	153.45	0.00	
1920.00†	8.319	72.441	1907.98	-165.89	52.92	167.24	0.00	
2020.00†	8.319	72.441	2006.92	-179.57	57.29	181.03	0.00	
2120.00†	8.319	72.441	2105.87	-193.26	61.65	194.83	0.00	
2220.00†	8.319	72.441	2204.82	-206.94	66.02	208.62	0.00	
2320.00†	8.319	72.441	2303.77	-220.62	70.38	222.42	0.00	
2420.00†	8.319	72.441	2402.71	-234.31	74.75	236.21	0.00	
2520.00†	8.319	72.441	2501.66	-247.99	79.11	250.01	0.00	
2620.00†	8.319	72.441	2600.61	-261.67	83.48	263.80	0.00	



# Planned Wellpath Report

## GREELEY-ROTHER FEDERAL 33N-2B-L PWP (REV-A.0)

Page 3 of 9



REFERENCE WELLPATH IDENTIFICATION			
Operator	SRC ENERGY	Slot	SLOT#19 GREELEY-ROTHER FEDERAL 33N-2B-L (1043'FSL & 294'FEL, SEC.01)
Area	COLORADO	Well	GREELEY-ROTHER FEDERAL 33N-2B-L
Field	WELD COUNTY (NAD83,TRUE NORTH)	Wellbore	GREELEY-ROTHER FEDERAL 33N-2B-L PWB
Facility	SEC.01-T05N-R67W		

### WELLPATH DATA (183 stations) † = interpolated/extrapolated station

MD [ft]	Inclination [°]	Azimuth [°]	TVD [ft]	Vert Sect [ft]	North [ft]	East [ft]	DLS [°/100ft]	Comments
2720.00†	8.319	72.441	2699.56	-275.35	87.84	277.59	0.00	
2820.00†	8.319	72.441	2798.51	-289.04	92.21	291.39	0.00	
2920.00†	8.319	72.441	2897.45	-302.72	96.57	305.18	0.00	
3020.00†	8.319	72.441	2996.40	-316.40	100.94	318.98	0.00	
3120.00†	8.319	72.441	3095.35	-330.09	105.30	332.77	0.00	
3220.00†	8.319	72.441	3194.30	-343.77	109.67	346.57	0.00	
3320.00†	8.319	72.441	3293.24	-357.45	114.03	360.36	0.00	
3420.00†	8.319	72.441	3392.19	-371.13	118.40	374.15	0.00	
3520.00†	8.319	72.441	3491.14	-384.82	122.76	387.95	0.00	
3620.00†	8.319	72.441	3590.09	-398.50	127.13	401.74	0.00	
3720.00†	8.319	72.441	3689.04	-412.18	131.49	415.54	0.00	
3820.00†	8.319	72.441	3787.98	-425.87	135.86	429.33	0.00	
3920.00†	8.319	72.441	3886.93	-439.55	140.22	443.12	0.00	
4020.00†	8.319	72.441	3985.88	-453.23	144.59	456.92	0.00	
4120.00†	8.319	72.441	4084.83	-466.91	148.95	470.71	0.00	
4220.00†	8.319	72.441	4183.77	-480.60	153.32	484.51	0.00	
4320.00†	8.319	72.441	4282.72	-494.28	157.68	498.30	0.00	
4420.00†	8.319	72.441	4381.67	-507.96	162.05	512.10	0.00	
4520.00†	8.319	72.441	4480.62	-521.65	166.41	525.89	0.00	
4620.00†	8.319	72.441	4579.57	-535.33	170.78	539.68	0.00	
4720.00†	8.319	72.441	4678.51	-549.01	175.14	553.48	0.00	
4820.00†	8.319	72.441	4777.46	-562.70	179.51	567.27	0.00	
4920.00†	8.319	72.441	4876.41	-576.38	183.87	581.07	0.00	
5020.00†	8.319	72.441	4975.36	-590.06	188.24	594.86	0.00	
5120.00†	8.319	72.441	5074.30	-603.74	192.60	608.66	0.00	
5220.00†	8.319	72.441	5173.25	-617.43	196.97	622.45	0.00	
5320.00†	8.319	72.441	5272.20	-631.11	201.33	636.24	0.00	
5420.00†	8.319	72.441	5371.15	-644.79	205.70	650.04	0.00	
5520.00†	8.319	72.441	5470.10	-658.48	210.06	663.83	0.00	
5620.00†	8.319	72.441	5569.04	-672.16	214.43	677.63	0.00	



# Planned Wellpath Report

## GREELEY-ROTHER FEDERAL 33N-2B-L PWP (REV-A.0)

Page 4 of 9



REFERENCE WELLPATH IDENTIFICATION			
Operator	SRC ENERGY	Slot	SLOT#19 GREELEY-ROTHER FEDERAL 33N-2B-L (1043'FSL & 294'FEL, SEC.01)
Area	COLORADO	Well	GREELEY-ROTHER FEDERAL 33N-2B-L
Field	WELD COUNTY (NAD83,TRUE NORTH)	Wellbore	GREELEY-ROTHER FEDERAL 33N-2B-L PWB
Facility	SEC.01-T05N-R67W		

WELLPATH DATA (183 stations) † = interpolated/extrapolated station								
MD [ft]	Inclination [°]	Azimuth [°]	TVD [ft]	Vert Sect [ft]	North [ft]	East [ft]	DLS [°/100ft]	Comments
5720.00†	8.319	72.441	5667.99	-685.84	218.79	691.42	0.00	
5820.00†	8.319	72.441	5766.94	-699.52	223.16	705.22	0.00	
5920.00†	8.319	72.441	5865.89	-713.21	227.52	719.01	0.00	
6020.00†	8.319	72.441	5964.83	-726.89	231.89	732.80	0.00	
6120.00†	8.319	72.441	6063.78	-740.57	236.25	746.60	0.00	
6220.00†	8.319	72.441	6162.73	-754.26	240.62	760.39	0.00	
6313.44	8.319	72.441	6255.19	-767.04	244.70	773.28	0.00	End of Tangent
6320.00†	7.740	71.610	6261.68	-767.91	244.98	774.15	9.00	
6420.00†	2.118	311.155	6361.40	-772.83	248.33	779.16	9.00	
6520.00†	10.537	271.742	6460.73	-762.25	249.83	768.61	9.00	
6620.00†	19.481	267.707	6557.22	-736.41	249.44	742.76	9.00	
6720.00†	28.460	266.160	6648.50	-695.96	247.17	702.24	9.00	
6820.00†	37.448	265.311	6732.33	-641.89	243.08	648.05	9.00	
6920.00†	46.441	264.753	6806.63	-575.53	237.27	581.53	9.00	
7020.00†	55.435	264.341	6869.58	-498.53	229.88	504.32	9.00	
7120.00†	64.430	264.010	6919.63	-412.76	221.09	418.31	9.00	
7220.00†	73.426	263.726	6955.55	-320.35	211.13	325.63	9.00	
7320.00†	82.423	263.467	6976.45	-223.57	200.23	228.55	9.00	
7407.39	90.285	263.250	6982.00 <sup>†</sup>	-137.28	190.15	141.99	9.00	End of 3D Arc
7420.00†	90.285	263.250	6981.94	-124.80	188.67	129.47	0.00	
7520.00†	90.285	263.250	6981.44	-25.81	176.92	30.17	0.00	
7620.00†	90.285	263.250	6980.94	73.17	165.16	-69.14	0.00	
7720.00†	90.285	263.250	6980.45	172.16	153.41	-168.45	0.00	
7820.00†	90.285	263.250	6979.95	271.15	141.66	-267.75	0.00	
7920.00†	90.285	263.250	6979.45	370.14	129.90	-367.06	0.00	
8020.00†	90.285	263.250	6978.95	469.12	118.15	-466.36	0.00	
8120.00†	90.285	263.250	6978.46	568.11	106.39	-565.67	0.00	
8157.39	90.285	263.250	6978.27	605.12	102.00	-602.80	0.00	End of Tangent
8220.00†	90.285	264.502	6977.96	667.19	95.32	-665.05	2.00	
8320.00†	90.286	266.502	6977.46	766.65	87.48	-764.74	2.00	



# Planned Wellpath Report

## GREELEY-ROTHER FEDERAL 33N-2B-L PWP (REV-A.0)

Page 5 of 9



REFERENCE WELLPATH IDENTIFICATION			
Operator	SRC ENERGY	Slot	SLOT#19 GREELEY-ROTHER FEDERAL 33N-2B-L (1043'FSL & 294'FEL, SEC.01)
Area	COLORADO	Well	GREELEY-ROTHER FEDERAL 33N-2B-L
Field	WELD COUNTY (NAD83,TRUE NORTH)	Wellbore	GREELEY-ROTHER FEDERAL 33N-2B-L PWB
Facility	SEC.01-T05N-R67W		

WELLPATH DATA (183 stations) † = interpolated/extrapolated station								
MD [ft]	Inclination [°]	Azimuth [°]	TVD [ft]	Vert Sect [ft]	North [ft]	East [ft]	DLS [°/100ft]	Comments
8420.00†	90.286	268.502	6976.96	866.41	83.12	-864.63	2.00	
8520.00†	90.286	270.502	6976.46	966.35	82.25	-964.62	2.00	
8620.00†	90.285	272.502	6975.96	1066.35	84.87	-1064.58	2.00	
8644.88	90.285	273.000	6975.84	1091.22	86.07	-1089.44	2.00	End of 3D Arc
8720.00†	90.285	273.000	6975.46	1166.31	90.00	-1164.45	0.00	
8820.00†	90.285	273.000	6974.97	1266.27	95.23	-1264.31	0.00	
8920.00†	90.285	273.000	6974.47	1366.23	100.47	-1364.17	0.00	
9020.00†	90.285	273.000	6973.97	1466.19	105.70	-1464.04	0.00	
9120.00†	90.285	273.000	6973.48	1566.15	110.93	-1563.90	0.00	
9220.00†	90.285	273.000	6972.98	1666.11	116.17	-1663.76	0.00	
9320.00†	90.285	273.000	6972.48	1766.07	121.40	-1763.62	0.00	
9420.00†	90.285	273.000	6971.98	1866.03	126.63	-1863.48	0.00	
9520.00†	90.285	273.000	6971.49	1965.99	131.87	-1963.34	0.00	
9620.00†	90.285	273.000	6970.99	2065.95	137.10	-2063.21	0.00	
9720.00†	90.285	273.000	6970.49	2165.91	142.34	-2163.07	0.00	
9820.00†	90.285	273.000	6969.99	2265.87	147.57	-2262.93	0.00	
9920.00†	90.285	273.000	6969.50	2365.83	152.80	-2362.79	0.00	
10020.00†	90.285	273.000	6969.00	2465.79	158.04	-2462.65	0.00	
10120.00†	90.285	273.000	6968.50	2565.75	163.27	-2562.51	0.00	
10220.00†	90.285	273.000	6968.00	2665.71	168.50	-2662.38	0.00	
10320.00†	90.285	273.000	6967.51	2765.67	173.74	-2762.24	0.00	
10420.00†	90.285	273.000	6967.01	2865.63	178.97	-2862.10	0.00	
10520.00†	90.285	273.000	6966.51	2965.59	184.20	-2961.96	0.00	
10620.00†	90.285	273.000	6966.01	3065.55	189.44	-3061.82	0.00	
10720.00†	90.285	273.000	6965.52	3165.51	194.67	-3161.68	0.00	
10820.00†	90.285	273.000	6965.02	3265.47	199.90	-3261.55	0.00	
10920.00†	90.285	273.000	6964.52	3365.43	205.14	-3361.41	0.00	
11020.00†	90.285	273.000	6964.02	3465.39	210.37	-3461.27	0.00	
11120.00†	90.285	273.000	6963.53	3565.35	215.61	-3561.13	0.00	
11220.00†	90.285	273.000	6963.03	3665.31	220.84	-3660.99	0.00	



# Planned Wellpath Report

## GREELEY-ROTHER FEDERAL 33N-2B-L PWP (REV-A.0)

Page 6 of 9



REFERENCE WELLPATH IDENTIFICATION			
Operator	SRC ENERGY	Slot	SLOT#19 GREELEY-ROTHER FEDERAL 33N-2B-L (1043'FSL & 294'FEL, SEC.01)
Area	COLORADO	Well	GREELEY-ROTHER FEDERAL 33N-2B-L
Field	WELD COUNTY (NAD83,TRUE NORTH)	Wellbore	GREELEY-ROTHER FEDERAL 33N-2B-L PWB
Facility	SEC.01-T05N-R67W		

WELLPATH DATA (183 stations) † = interpolated/extrapolated station								
MD [ft]	Inclination [°]	Azimuth [°]	TVD [ft]	Vert Sect [ft]	North [ft]	East [ft]	DLS [°/100ft]	Comments
11320.00†	90.285	273.000	6962.53	3765.27	226.07	-3760.85	0.00	
11420.00†	90.285	273.000	6962.03	3865.23	231.31	-3860.72	0.00	
11520.00†	90.285	273.000	6961.54	3965.19	236.54	-3960.58	0.00	
11620.00†	90.285	273.000	6961.04	4065.15	241.77	-4060.44	0.00	
11720.00†	90.285	273.000	6960.54	4165.11	247.01	-4160.30	0.00	
11820.00†	90.285	273.000	6960.05	4265.07	252.24	-4260.16	0.00	
11920.00†	90.285	273.000	6959.55	4365.03	257.47	-4360.02	0.00	
12020.00†	90.285	273.000	6959.05	4464.99	262.71	-4459.89	0.00	
12120.00†	90.285	273.000	6958.55	4564.95	267.94	-4559.75	0.00	
12220.00†	90.285	273.000	6958.06	4664.91	273.17	-4659.61	0.00	
12320.00†	90.285	273.000	6957.56	4764.87	278.41	-4759.47	0.00	
12420.00†	90.285	273.000	6957.06	4864.83	283.64	-4859.33	0.00	
12520.00†	90.285	273.000	6956.56	4964.79	288.87	-4959.20	0.00	
12620.00†	90.285	273.000	6956.07	5064.75	294.11	-5059.06	0.00	
12720.00†	90.285	273.000	6955.57	5164.71	299.34	-5158.92	0.00	
12820.00†	90.285	273.000	6955.07	5264.67	304.58	-5258.78	0.00	
12920.00†	90.285	273.000	6954.57	5364.63	309.81	-5358.64	0.00	
13020.00†	90.285	273.000	6954.08	5464.59	315.04	-5458.50	0.00	
13120.00†	90.285	273.000	6953.58	5564.55	320.28	-5558.37	0.00	
13220.00†	90.285	273.000	6953.08	5664.51	325.51	-5658.23	0.00	
13320.00†	90.285	273.000	6952.58	5764.47	330.74	-5758.09	0.00	
13420.00†	90.285	273.000	6952.09	5864.43	335.98	-5857.95	0.00	
13520.00†	90.285	273.000	6951.59	5964.39	341.21	-5957.81	0.00	
13544.88	90.285	273.000	6951.47	5989.27	342.51	-5982.66	0.00	End of Tangent
13620.00†	90.284	271.498	6951.09	6064.37	345.46	-6057.72	2.00	
13720.00†	90.284	269.498	6950.60	6164.35	346.33	-6157.71	2.00	
13781.89	90.283	268.260	6950.29	6226.19	345.12	-6219.59	2.00	End of 3D Arc
13820.00†	90.283	268.260	6950.10	6264.23	343.96	-6257.68	0.00	
13920.00†	90.283	268.260	6949.61	6364.08	340.92	-6357.63	0.00	
14020.00†	90.283	268.260	6949.12	6463.93	337.89	-6457.58	0.00	



# Planned Wellpath Report

## GREELEY-ROTHER FEDERAL 33N-2B-L PWP (REV-A.0)

Page 7 of 9



REFERENCE WELLPATH IDENTIFICATION			
Operator	SRC ENERGY	Slot	SLOT#19 GREELEY-ROTHER FEDERAL 33N-2B-L (1043'FSL & 294'FEL, SEC.01)
Area	COLORADO	Well	GREELEY-ROTHER FEDERAL 33N-2B-L
Field	WELD COUNTY (NAD83,TRUE NORTH)	Wellbore	GREELEY-ROTHER FEDERAL 33N-2B-L PWB
Facility	SEC.01-T05N-R67W		

WELLPATH DATA (183 stations) † = interpolated/extrapolated station								
MD [ft]	Inclination [°]	Azimuth [°]	TVD [ft]	Vert Sect [ft]	North [ft]	East [ft]	DLS [°/100ft]	Comments
14120.00†	90.283	268.260	6948.62	6563.78	334.85	-6557.53	0.00	
14220.00†	90.283	268.260	6948.13	6663.62	331.81	-6657.49	0.00	
14320.00†	90.283	268.260	6947.63	6763.47	328.78	-6757.44	0.00	
14420.00†	90.283	268.260	6947.14	6863.32	325.74	-6857.39	0.00	
14520.00†	90.283	268.260	6946.65	6963.17	322.70	-6957.34	0.00	
14620.00†	90.283	268.260	6946.15	7063.02	319.66	-7057.30	0.00	
14720.00†	90.283	268.260	6945.66	7162.86	316.63	-7157.25	0.00	
14820.00†	90.283	268.260	6945.17	7262.71	313.59	-7257.20	0.00	
14920.00†	90.283	268.260	6944.67	7362.56	310.55	-7357.15	0.00	
15020.00†	90.283	268.260	6944.18	7462.41	307.52	-7457.11	0.00	
15120.00†	90.283	268.260	6943.69	7562.26	304.48	-7557.06	0.00	
15220.00†	90.283	268.260	6943.19	7662.10	301.44	-7657.01	0.00	
15320.00†	90.283	268.260	6942.70	7761.95	298.41	-7756.97	0.00	
15420.00†	90.283	268.260	6942.21	7861.80	295.37	-7856.92	0.00	
15520.00†	90.283	268.260	6941.71	7961.65	292.33	-7956.87	0.00	
15620.00†	90.283	268.260	6941.22	8061.50	289.30	-8056.82	0.00	
15720.00†	90.283	268.260	6940.73	8161.34	286.26	-8156.78	0.00	
15820.00†	90.283	268.260	6940.23	8261.19	283.22	-8256.73	0.00	
15920.00†	90.283	268.260	6939.74	8361.04	280.19	-8356.68	0.00	
16020.00†	90.283	268.260	6939.25	8460.89	277.15	-8456.63	0.00	
16120.00†	90.283	268.260	6938.75	8560.74	274.11	-8556.59	0.00	
16220.00†	90.283	268.260	6938.26	8660.58	271.08	-8656.54	0.00	
16320.00†	90.283	268.260	6937.76	8760.43	268.04	-8756.49	0.00	
16420.00†	90.283	268.260	6937.27	8860.28	265.00	-8856.44	0.00	
16520.00†	90.283	268.260	6936.78	8960.13	261.96	-8956.40	0.00	
16620.00†	90.283	268.260	6936.28	9059.98	258.93	-9056.35	0.00	
16720.00†	90.283	268.260	6935.79	9159.82	255.89	-9156.30	0.00	
16820.00†	90.283	268.260	6935.30	9259.67	252.85	-9256.25	0.00	
16920.00†	90.283	268.260	6934.80	9359.52	249.82	-9356.21	0.00	
17020.00†	90.283	268.260	6934.31	9459.37	246.78	-9456.16	0.00	



# Planned Wellpath Report

## GREELEY-ROTHER FEDERAL 33N-2B-L PWP (REV-A.0)

Page 8 of 9



REFERENCE WELLPATH IDENTIFICATION			
Operator	SRC ENERGY	Slot	SLOT#19 GREELEY-ROTHER FEDERAL 33N-2B-L (1043'FSL & 294'FEL, SEC.01)
Area	COLORADO	Well	GREELEY-ROTHER FEDERAL 33N-2B-L
Field	WELD COUNTY (NAD83,TRUE NORTH)	Wellbore	GREELEY-ROTHER FEDERAL 33N-2B-L PWB
Facility	SEC.01-T05N-R67W		

WELLPATH DATA (183 stations) † = interpolated/extrapolated station								
MD [ft]	Inclination [°]	Azimuth [°]	TVD [ft]	Vert Sect [ft]	North [ft]	East [ft]	DLS [°/100ft]	Comments
17120.00†	90.283	268.260	6933.82	9559.22	243.74	-9556.11	0.00	
17220.00†	90.283	268.260	6933.32	9659.06	240.71	-9656.07	0.00	
17285.49	90.283	268.260	6933.00 <sup>2</sup>	9724.46	238.72	-9721.53	0.00	End of Tangent

HOLE & CASING SECTIONS									
- Ref Wellbore: GREELEY-ROTHER FEDERAL 33N-2B-L PWB					Ref Wellpath: GREELEY-ROTHER FEDERAL 33N-2B-L PWP (REV-A.0)				
String/Diameter	Start MD [ft]	End MD [ft]	Interval [ft]	Start TVD [ft]	End TVD [ft]	Start N/S [ft]	Start E/W [ft]	End N/S [ft]	End E/W [ft]
13.5in Open Hole	20.00	1750.00	1730.00	20.00	1739.76	0.00	0.00	45.50	143.79
9.625in Casing Surface	20.00	1750.00	1730.00	20.00	1739.76	0.00	0.00	45.50	143.79
8.5in Open Hole	1750.00	17285.49	15535.49	1739.76	6933.00	45.50	143.79	238.72	-9721.53

TARGETS									
Name	MD [ft]	TVD [ft]	North [ft]	East [ft]	Grid East [US ft]	Grid North [US ft]	Latitude	Longitude	Shape
SEC.01-T05N-R67W		22.00	1324.69	-1.39	3185545.50	1399477.36	40°25'40.991"N	104°50'00.640"W	polygon
SEC.02-T05N-R67W		22.00	1324.69	-1.39	3185545.50	1399477.36	40°25'40.991"N	104°50'00.640"W	polygon
2) GREELEY ROTHER FEDERAL 33N-2B-L BHL ON PLAT (1374'FSL & 150'FWL, SEC.02)	17285.49	6933.00	238.72	-9721.53	3175834.19	1398318.41	40°25'30.241"N	104°52'06.323"W	circle
1) GREELEY ROTHER FEDERAL 33N-2B-L TOP OF PROD ON PLAT (1228'FSL & 150'FEL, SEC.01)	7407.39	6982.00	190.15	141.99	3185697.40	1398343.98	40°25'29.780"N	104°49'58.786"W	circle



# Planned Wellpath Report

## GREELEY-ROTHER FEDERAL 33N-2B-L PWP (REV-A.0)

Page 9 of 9



REFERENCE WELLPATH IDENTIFICATION			
Operator	SRC ENERGY	Slot	SLOT#19 GREELEY-ROTHER FEDERAL 33N-2B-L (1043'FSL & 294'FEL, SEC.01)
Area	COLORADO	Well	GREELEY-ROTHER FEDERAL 33N-2B-L
Field	WELD COUNTY (NAD83,TRUE NORTH)	Wellbore	GREELEY-ROTHER FEDERAL 33N-2B-L PWB
Facility	SEC.01-T05N-R67W		

SURVEY PROGRAM -				
Ref Wellbore: GREELEY-ROTHER FEDERAL 33N-2B-L PWB      Ref Wellpath: GREELEY-ROTHER FEDERAL 33N-2B-L PWP (REV-A.0)				
Start MD [ft]	End MD [ft]	Positional Uncertainty Model	Log Name/Comment	Wellbore
20.00	1750.00	Custom BHI NaviTrak (Standard Rotating+Axial Corr) (Rockies 0.03Gt model)		GREELEY-ROTHER FEDERAL 33N-2B-L PWB
1750.00	17285.49	Custom BHI AutoTrak Curve (IFR1, Short) (Rockies 0.03Gt model)		GREELEY-ROTHER FEDERAL 33N-2B-L PWB