

SRC ENERGY

Location: COLORADO Slot: SLOT#14 GREELEY-ROTHE FEDERAL 32N-2B-L (1143'FSL & 294'FEL, SEC.01)
Field: WELD COUNTY (NAD83, TRUE NORTH) Well: GREELEY-ROTHE FEDERAL 32N-2B-L
Facility: SEC.01-T05N-R67W Wellbore: GREELEY-ROTHE FEDERAL 32N-2B-L PWB

Pilot reference wellpath is GREELEY-ROTHE FEDERAL 32N-2B-L PWP (REV-A.0)	Grid System: NAD83 / Lambert Colorado SP, Northern Zone (501), US feet
True vertical depths are referenced to PRECISION 462 (20) (RKB)	* = Wellpath was transformed from a different geodetic datum
Measured depths are referenced to PRECISION 462 (20) (RKB)	North Reference: True north
PRECISION 462 (20) (RKB) to Mean Sea Level: 4891 feet	Scale: True distance
Mean Sea Level to Mud line (At Slot: SLOT#14 GREELEY-ROTHE FEDERAL 32N-2B-L (1143'FSL & 294'FEL, SEC.01)): 0 feet	Depths are in feet
Coordinates are in feet referenced to Slot	Created by: doddiana on 2017-10-04
	Database: WellArchitectDB

Location Information

Facility Name				Grid East (US ft)	Grid North (US ft)	Latitude	Longitude
SEC.01-T05N-R67W				3185545.499	1399477.355	40°25'40.991"N	104°50'00.640"W
Slot	Local N (ft)	Local E (ft)	Grid East (US ft)	Grid North (US ft)	Latitude	Longitude	
SLOT#14 GREELEY-ROTHE FEDERAL 32N-2B-L (1143'FSL & 294'FEL, SEC.01)	-1224.80	0.00	3185554.704	1399502.637	40°25'28.888"N	104°50'00.640"W	
PRECISION 462 (20) (RKB) to Mud line (At Slot: SLOT#14 GREELEY-ROTHE FEDERAL 32N-2B-L (1143'FSL & 294'FEL, SEC.01))						4891ft	
Mean Sea Level to Mud line (At Slot: SLOT#14 GREELEY-ROTHE FEDERAL 32N-2B-L (1143'FSL & 294'FEL, SEC.01))						0ft	
PRECISION 462 (20) (RKB) to Mean Sea Level						4891ft	

Survey Program

Start MD (ft)	End MD (ft)	Tool	Model	Log Name/Comment	Wellbore
20.00	1750.00	BHI NavTrak	Custom BHI NavTrak (Standard Rotating+Azal Corr) (Rockies 0.03Gr model)		GREELEY-ROTHE FEDERAL 32N-2B-L PWB
1750.00	17135.08	BHI AutoTrak Curve	Custom BHI AutoTrak Curve (IFR1, Short) (Rockies 0.03Gr model)		GREELEY-ROTHE FEDERAL 32N-2B-L PWB

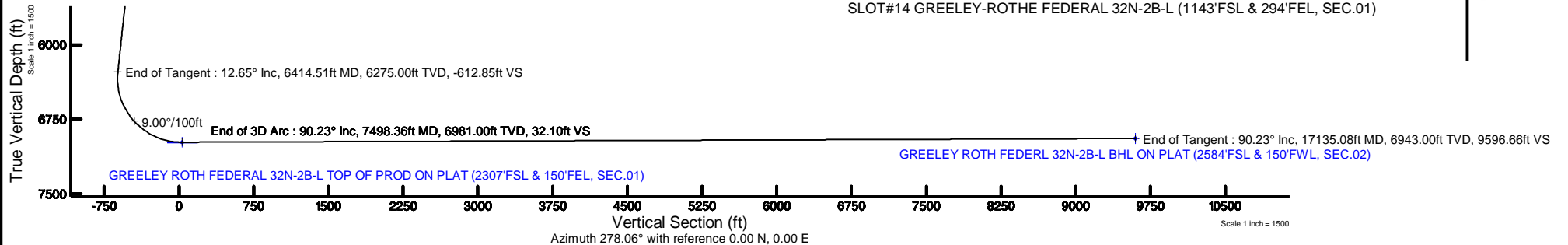


SRC ENERGY



BGGM (1900.0 to 2018.0) Dip: 66.87° Field: 52416.1 nT
Magnetic North is 8.39 degrees East of True North (at 9/22/2017)

To correct azimuth from Magnetic to True add 8.39 degrees



Targets

Name	MD (ft)	TVD (ft)	Local N (ft)	Local E (ft)	Grid East (US ft)	Grid North (US ft)	Latitude	Longitude	
SEC.01-T05N-R67W		21.00	1224.80	0.00	3185545.50	1399477.36	40°25'40.991"N	104°50'00.640"W	
SEC.02-T05N-R67W		21.00	1224.80	0.00	3185545.50	1399477.36	40°25'40.991"N	104°50'00.640"W	
GREELEY ROTH FEDERAL 32N-2B-L BHL ON PLAT (2584'FSL & 150'FWL, SEC.02)		17135.08	6943.00	1345.01	-9501.93	3176043.32	1399526.14	40°25'42.161"N	104°50'03.508"W
GREELEY ROTH FEDERAL 32N-2B-L TOP OF PROD ON PLAT (2307'FSL & 150'FSL, SEC.01)		7498.36	6981.00	1169.41	133.11	3185679.02	1399422.96	40°25'40.447"N	104°49'58.919"W

Hole and Casing Sections

Name	Start MD (ft)	End MD (ft)	Interval (ft)	Start TVD (ft)	End TVD (ft)	Start Local N (ft)	Start Local E (ft)	End Local N (ft)	End Local E (ft)	Wellbore
13.5in Open Hole	20.00	1750.00	1730.00	20.00	1723.80	0.00	0.00	208.33	154.87	GREELEY-ROTHE FEDERAL 32N-2B-L PWB
9.625in Casing Surface	20.00	1750.00	1730.00	20.00	1723.80	0.00	0.00	208.33	154.87	GREELEY-ROTHE FEDERAL 32N-2B-L PWB
8.5in Open Hole	1750.00	17135.08	15385.08	1723.80	N/A	208.33	154.87	N/A	N/A	GREELEY-ROTHE FEDERAL 32N-2B-L PWB

Well Profile Data

Design Comment	MD (ft)	Inc (°)	Az (°)	TVD (ft)	Local N (ft)	Local E (ft)	DLS (°/100ft)	VS (ft)
Tie On	20.00	0.000	36.627	20.00	0.00	0.00	0.00	0.00
End of Tangent	250.00	0.000	36.627	250.00	0.00	0.00	0.00	0.00
End of Build	882.74	12.655	36.627	877.61	55.85	41.52	2.00	-33.28
End of Tangent	6414.51	12.655	36.627	6275.00	1028.43	764.54	0.00	-612.85
End of 3D Arc	7498.36	90.226	271.044	6981.00	1169.41	133.11	9.00	32.10
End of Tangent	17135.08	90.226	271.044	6943.00	1345.01	-9501.93	0.00	9596.66

GREELEY-ROTHE_FEDERAL_32N-2B-L_PWP__REV-A.0_.las

~VERSION INFORMATION

VERS. 2.0 : CWLS LOG ASCII STANDARD-VERSION 2.0

WRAP. NO : ASCII DATA SECTION CONTAINS ONE ROW PER WELLPATH STATION

~WELL INFORMATION

#MNEM	.UNITS	DATA	:DESCRIPTION
#----	.-----	----	:-----
STRT	.ft	0.00	:START MD
STOP	.ft	17135.08	:STOP MD
STEP	.ft	0.0	:STEP (non-uniform increment)
NULL	.	-999.99	:NULL
COMP	.	SRC ENERGY	:OPERATOR
WELL	.	GREELEY-ROTHE FEDERAL 32N-2B-L	:WELL
FLD	.	WELD COUNTY (NAD83,TRUE NORTH)	:FIELD
LOC	.	COLORADO	:AREA (aka: Location)
CNTY	.	N/A	:COUNTY
STAT	.	N/A	:STATE
CTRY	.	N/A	:COUNTRY
SRVC	.	Baker Hughes	:CONTRACTOR
DATE	.	10/04/2017	:LOG REV DATE
API	.		:API NUMBER

~OTHER INFORMATION

#Software: WellArchitect(R) Version 5.0

#MNEM	.UNITS	DATA	:DESCRIPTION
#----	.-----	----	:-----
WPTYPE	.	PLANNED WELLPATH	:WELLPATH TYPE
FACILITY	.	SEC.01-T05N-R67W	:FACILITY
SLOT	.	SLOT#14 GREELEY-ROTHE FEDERAL 32N-2B-L (1143'FSL & 294'FEL, SEC.01)	:SLOT
WELLBORE	.	GREELEY-ROTHE FEDERAL 32N-2B-L PWB	:WELLBORE
WELLPATH	.	GREELEY-ROTHE FEDERAL 32N-2B-L PWP (REV-A.0)	:WELLPATH
MDREFPT	.	PRECISION 462 (20') (RKB)	:MD REFERENCE POINT
TVDREFPT	.	PRECISION 462 (20') (RKB)	:TVD REFERENCE POINT
LCLREFPT	.	Slot	:LOCAL COORDINATE REFERENCE PT

GREELEY-ROTHE_FEDERAL_32N-2B-L_PWP__REV-A.0_.las

VSAZIMUTH.deg 278.06 :VERTICAL SECTION AZIMUTH
 VSORIGN .ft 0.00 :VERTICAL SECTION ORIGIN NORTH
 VSORIGE .ft 0.00 :VERTICAL SECTION ORIGIN EAST

~CURVE (WELLPATH) INFORMATION

#MNEM .UNITS :DESCRIPTION
 #---- .----- :-----
 DEPT .ft :MEASURED DEPTH
 INC .deg :INCLINATION
 AZI .deg :AZIMUTH
 TVD .ft :TRUE VERTICAL DEPTH
 SECT .ft :CROSS SECTION (CURTAIN/VERTICAL)
 LOCALN .ft :LOCAL NORTH
 LOCALE .ft :LOCAL EAST
 LAT .deg :LATITUDE
 LONG .deg :LONGITUDE
 DLS .deg/100ft :DOGLEG SEVERITY

~ASCII DATA

0.00	0.00	36.63	0.00	0.00	0.00	0.00	40.4246911	-104.8335111	0.00
20.00	0.00	36.63	20.00	0.00	0.00	0.00	40.4246911	-104.8335111	0.00
120.00	0.00	36.63	120.00	0.00	0.00	0.00	40.4246911	-104.8335111	0.00
220.00	0.00	36.63	220.00	0.00	0.00	0.00	40.4246911	-104.8335111	0.00
250.00	0.00	36.63	250.00	0.00	0.00	0.00	40.4246911	-104.8335111	0.00
320.00	1.40	36.63	319.99	-0.41	0.69	0.51	40.4246930	-104.8335093	2.00
420.00	3.40	36.63	419.90	-2.41	4.05	3.01	40.4247022	-104.8335003	2.00
520.00	5.40	36.63	519.60	-6.08	10.20	7.59	40.4247191	-104.8334839	2.00
620.00	7.40	36.63	618.97	-11.41	19.15	14.24	40.4247437	-104.8334600	2.00
720.00	9.40	36.63	717.89	-18.40	30.87	22.95	40.4247759	-104.8334287	2.00
820.00	11.40	36.63	816.25	-27.03	45.36	33.72	40.4248156	-104.8333900	2.00
882.74	12.66	36.63	877.61	-33.28	55.85	41.52	40.4248444	-104.8333620	2.00
920.00	12.66	36.63	913.96	-37.19	62.40	46.39	40.4248624	-104.8333445	0.00
1020.00	12.66	36.63	1011.53	-47.66	79.98	59.46	40.4249107	-104.8332975	0.00
1120.00	12.66	36.63	1109.10	-58.14	97.56	72.53	40.4249589	-104.8332506	0.00

GREELEY-ROTHE_FEDERAL_32N-2B-L_PWP__REV-A.0_.las

1220.00	12.66	36.63	1206.68	-68.62	115.15	85.60	40.4250072	-104.8332037	0.00
1320.00	12.66	36.63	1304.25	-79.09	132.73	98.67	40.4250554	-104.8331567	0.00
1420.00	12.66	36.63	1401.82	-89.57	150.31	111.74	40.4251037	-104.8331098	0.00
1520.00	12.66	36.63	1499.39	-100.05	167.89	124.81	40.4251520	-104.8330628	0.00
1620.00	12.66	36.63	1596.96	-110.53	185.47	137.88	40.4252002	-104.8330159	0.00
1720.00	12.66	36.63	1694.53	-121.00	203.06	150.95	40.4252485	-104.8329689	0.00
1820.00	12.66	36.63	1792.10	-131.48	220.64	164.02	40.4252967	-104.8329220	0.00
1920.00	12.66	36.63	1889.67	-141.96	238.22	177.09	40.4253450	-104.8328750	0.00
2020.00	12.66	36.63	1987.24	-152.43	255.80	190.16	40.4253933	-104.8328281	0.00
2120.00	12.66	36.63	2084.81	-162.91	273.38	203.23	40.4254415	-104.8327812	0.00
2220.00	12.66	36.63	2182.38	-173.39	290.96	216.30	40.4254898	-104.8327342	0.00
2320.00	12.66	36.63	2279.95	-183.87	308.55	229.37	40.4255380	-104.8326873	0.00
2420.00	12.66	36.63	2377.52	-194.34	326.13	242.44	40.4255863	-104.8326403	0.00
2520.00	12.66	36.63	2475.09	-204.82	343.71	255.51	40.4256346	-104.8325934	0.00
2620.00	12.66	36.63	2572.67	-215.30	361.29	268.59	40.4256828	-104.8325464	0.00
2720.00	12.66	36.63	2670.24	-225.77	378.87	281.66	40.4257311	-104.8324995	0.00
2820.00	12.66	36.63	2767.81	-236.25	396.45	294.73	40.4257793	-104.8324525	0.00
2920.00	12.66	36.63	2865.38	-246.73	414.04	307.80	40.4258276	-104.8324056	0.00
3020.00	12.66	36.63	2962.95	-257.21	431.62	320.87	40.4258758	-104.8323586	0.00
3120.00	12.66	36.63	3060.52	-267.68	449.20	333.94	40.4259241	-104.8323117	0.00
3220.00	12.66	36.63	3158.09	-278.16	466.78	347.01	40.4259724	-104.8322647	0.00
3320.00	12.66	36.63	3255.66	-288.64	484.36	360.08	40.4260206	-104.8322178	0.00
3420.00	12.66	36.63	3353.23	-299.11	501.95	373.15	40.4260689	-104.8321709	0.00
3520.00	12.66	36.63	3450.80	-309.59	519.53	386.22	40.4261171	-104.8321239	0.00
3620.00	12.66	36.63	3548.37	-320.07	537.11	399.29	40.4261654	-104.8320770	0.00
3720.00	12.66	36.63	3645.94	-330.55	554.69	412.36	40.4262137	-104.8320300	0.00
3820.00	12.66	36.63	3743.51	-341.02	572.27	425.43	40.4262619	-104.8319831	0.00
3920.00	12.66	36.63	3841.08	-351.50	589.85	438.50	40.4263102	-104.8319361	0.00
4020.00	12.66	36.63	3938.66	-361.98	607.44	451.57	40.4263584	-104.8318892	0.00
4120.00	12.66	36.63	4036.23	-372.45	625.02	464.64	40.4264067	-104.8318422	0.00
4220.00	12.66	36.63	4133.80	-382.93	642.60	477.71	40.4264550	-104.8317953	0.00
4320.00	12.66	36.63	4231.37	-393.41	660.18	490.78	40.4265032	-104.8317483	0.00
4420.00	12.66	36.63	4328.94	-403.89	677.76	503.85	40.4265515	-104.8317014	0.00
4520.00	12.66	36.63	4426.51	-414.36	695.35	516.92	40.4265997	-104.8316544	0.00

GREELEY-ROTHE_FEDERAL_32N-2B-L_PWP__REV-A.0_.las

4620.00	12.66	36.63	4524.08	-424.84	712.93	529.99	40.4266480	-104.8316075	0.00
4720.00	12.66	36.63	4621.65	-435.32	730.51	543.06	40.4266963	-104.8315605	0.00
4820.00	12.66	36.63	4719.22	-445.80	748.09	556.13	40.4267445	-104.8315136	0.00
4920.00	12.66	36.63	4816.79	-456.27	765.67	569.20	40.4267928	-104.8314666	0.00
5020.00	12.66	36.63	4914.36	-466.75	783.25	582.27	40.4268410	-104.8314197	0.00
5120.00	12.66	36.63	5011.93	-477.23	800.84	595.34	40.4268893	-104.8313728	0.00
5220.00	12.66	36.63	5109.50	-487.70	818.42	608.41	40.4269376	-104.8313258	0.00
5320.00	12.66	36.63	5207.08	-498.18	836.00	621.48	40.4269858	-104.8312789	0.00
5420.00	12.66	36.63	5304.65	-508.66	853.58	634.55	40.4270341	-104.8312319	0.00
5520.00	12.66	36.63	5402.22	-519.14	871.16	647.62	40.4270823	-104.8311850	0.00
5620.00	12.66	36.63	5499.79	-529.61	888.74	660.70	40.4271306	-104.8311380	0.00
5720.00	12.66	36.63	5597.36	-540.09	906.33	673.77	40.4271788	-104.8310911	0.00
5820.00	12.66	36.63	5694.93	-550.57	923.91	686.84	40.4272271	-104.8310441	0.00
5920.00	12.66	36.63	5792.50	-561.04	941.49	699.91	40.4272754	-104.8309972	0.00
6020.00	12.66	36.63	5890.07	-571.52	959.07	712.98	40.4273236	-104.8309502	0.00
6120.00	12.66	36.63	5987.64	-582.00	976.65	726.05	40.4273719	-104.8309033	0.00
6220.00	12.66	36.63	6085.21	-592.48	994.24	739.12	40.4274201	-104.8308563	0.00
6320.00	12.66	36.63	6182.78	-602.95	1011.82	752.19	40.4274684	-104.8308094	0.00
6414.51	12.66	36.63	6275.00	-612.85	1028.43	764.54	40.4275140	-104.8307650	0.00
6420.00	12.38	34.74	6280.36	-613.41	1029.40	765.23	40.4275167	-104.8307625	9.00
6520.00	10.58	349.14	6378.55	-615.25	1047.26	769.62	40.4275657	-104.8307467	9.00
6620.00	15.19	313.37	6476.15	-601.55	1065.31	758.35	40.4276152	-104.8307872	9.00
6720.00	22.58	297.15	6570.76	-572.66	1083.10	731.68	40.4276641	-104.8308830	9.00
6820.00	30.81	288.93	6660.06	-529.28	1100.20	690.29	40.4277110	-104.8310317	9.00
6920.00	39.35	283.96	6741.84	-472.48	1116.19	635.19	40.4277549	-104.8312296	9.00
7020.00	48.04	280.54	6814.09	-403.66	1130.67	567.74	40.4277947	-104.8314719	9.00
7120.00	56.80	277.95	6875.02	-324.52	1143.29	489.59	40.4278293	-104.8317526	9.00
7220.00	65.61	275.84	6923.15	-237.00	1153.73	402.67	40.4278580	-104.8320648	9.00
7320.00	74.44	274.00	6957.28	-143.25	1161.74	309.13	40.4278799	-104.8324008	9.00
7420.00	83.29	272.32	6976.57	-45.60	1167.12	211.26	40.4278947	-104.8327523	9.00
7498.36	90.23	271.04	6981.00	32.10	1169.41	133.11	40.4279010	-104.8330330	9.00
7520.00	90.23	271.04	6980.91	53.58	1169.80	111.47	40.4279021	-104.8331107	0.00
7620.00	90.23	271.04	6980.52	152.83	1171.62	11.49	40.4279071	-104.8334698	0.00
7720.00	90.23	271.04	6980.13	252.08	1173.45	-88.49	40.4279121	-104.8338290	0.00

GREELEY-ROTHE_FEDERAL_32N-2B-L_PWP__REV-A.0_.las

7820.00	90.23	271.04	6979.73	351.34	1175.27	-188.48	40.4279171	-104.8341881	0.00
7920.00	90.23	271.04	6979.34	450.59	1177.09	-288.46	40.4279221	-104.8345472	0.00
8020.00	90.23	271.04	6978.94	549.84	1178.91	-388.44	40.4279271	-104.8349063	0.00
8120.00	90.23	271.04	6978.55	649.09	1180.74	-488.42	40.4279321	-104.8352655	0.00
8220.00	90.23	271.04	6978.15	748.34	1182.56	-588.41	40.4279371	-104.8356246	0.00
8320.00	90.23	271.04	6977.76	847.59	1184.38	-688.39	40.4279421	-104.8359837	0.00
8420.00	90.23	271.04	6977.37	946.84	1186.20	-788.37	40.4279471	-104.8363428	0.00
8520.00	90.23	271.04	6976.97	1046.09	1188.02	-888.36	40.4279521	-104.8367020	0.00
8620.00	90.23	271.04	6976.58	1145.34	1189.85	-988.34	40.4279571	-104.8370611	0.00
8720.00	90.23	271.04	6976.18	1244.60	1191.67	-1088.32	40.4279620	-104.8374202	0.00
8820.00	90.23	271.04	6975.79	1343.85	1193.49	-1188.30	40.4279670	-104.8377793	0.00
8920.00	90.23	271.04	6975.39	1443.10	1195.31	-1288.29	40.4279720	-104.8381385	0.00
9020.00	90.23	271.04	6975.00	1542.35	1197.14	-1388.27	40.4279770	-104.8384976	0.00
9120.00	90.23	271.04	6974.61	1641.60	1198.96	-1488.25	40.4279820	-104.8388567	0.00
9220.00	90.23	271.04	6974.21	1740.85	1200.78	-1588.23	40.4279870	-104.8392158	0.00
9320.00	90.23	271.04	6973.82	1840.10	1202.60	-1688.22	40.4279920	-104.8395750	0.00
9420.00	90.23	271.04	6973.42	1939.35	1204.42	-1788.20	40.4279969	-104.8399341	0.00
9520.00	90.23	271.04	6973.03	2038.61	1206.25	-1888.18	40.4280019	-104.8402932	0.00
9620.00	90.23	271.04	6972.63	2137.86	1208.07	-1988.16	40.4280069	-104.8406523	0.00
9720.00	90.23	271.04	6972.24	2237.11	1209.89	-2088.15	40.4280119	-104.8410115	0.00
9820.00	90.23	271.04	6971.85	2336.36	1211.71	-2188.13	40.4280169	-104.8413706	0.00
9920.00	90.23	271.04	6971.45	2435.61	1213.54	-2288.11	40.4280218	-104.8417297	0.00
10020.00	90.23	271.04	6971.06	2534.86	1215.36	-2388.09	40.4280268	-104.8420888	0.00
10120.00	90.23	271.04	6970.66	2634.11	1217.18	-2488.08	40.4280318	-104.8424480	0.00
10220.00	90.23	271.04	6970.27	2733.36	1219.00	-2588.06	40.4280368	-104.8428071	0.00
10320.00	90.23	271.04	6969.87	2832.61	1220.82	-2688.04	40.4280417	-104.8431662	0.00
10420.00	90.23	271.04	6969.48	2931.87	1222.65	-2788.02	40.4280467	-104.8435253	0.00
10520.00	90.23	271.04	6969.08	3031.12	1224.47	-2888.01	40.4280517	-104.8438845	0.00
10620.00	90.23	271.04	6968.69	3130.37	1226.29	-2987.99	40.4280566	-104.8442436	0.00
10720.00	90.23	271.04	6968.30	3229.62	1228.11	-3087.97	40.4280616	-104.8446027	0.00
10820.00	90.23	271.04	6967.90	3328.87	1229.94	-3187.96	40.4280666	-104.8449618	0.00
10920.00	90.23	271.04	6967.51	3428.12	1231.76	-3287.94	40.4280715	-104.8453210	0.00
11020.00	90.23	271.04	6967.11	3527.37	1233.58	-3387.92	40.4280765	-104.8456801	0.00
11120.00	90.23	271.04	6966.72	3626.62	1235.40	-3487.90	40.4280815	-104.8460392	0.00

GREELEY-ROTHE_FEDERAL_32N-2B-L_PWP__REV-A.0_.las

11220.00	90.23	271.04	6966.32	3725.87	1237.23	-3587.89	40.4280864	-104.8463983	0.00
11320.00	90.23	271.04	6965.93	3825.13	1239.05	-3687.87	40.4280914	-104.8467575	0.00
11420.00	90.23	271.04	6965.54	3924.38	1240.87	-3787.85	40.4280964	-104.8471166	0.00
11520.00	90.23	271.04	6965.14	4023.63	1242.69	-3887.83	40.4281013	-104.8474757	0.00
11620.00	90.23	271.04	6964.75	4122.88	1244.51	-3987.82	40.4281063	-104.8478348	0.00
11720.00	90.23	271.04	6964.35	4222.13	1246.34	-4087.80	40.4281112	-104.8481940	0.00
11820.00	90.23	271.04	6963.96	4321.38	1248.16	-4187.78	40.4281162	-104.8485531	0.00
11920.00	90.23	271.04	6963.56	4420.63	1249.98	-4287.76	40.4281211	-104.8489122	0.00
12020.00	90.23	271.04	6963.17	4519.88	1251.80	-4387.75	40.4281261	-104.8492714	0.00
12120.00	90.23	271.04	6962.78	4619.14	1253.63	-4487.73	40.4281311	-104.8496305	0.00
12220.00	90.23	271.04	6962.38	4718.39	1255.45	-4587.71	40.4281360	-104.8499896	0.00
12320.00	90.23	271.04	6961.99	4817.64	1257.27	-4687.69	40.4281410	-104.8503487	0.00
12420.00	90.23	271.04	6961.59	4916.89	1259.09	-4787.68	40.4281459	-104.8507079	0.00
12520.00	90.23	271.04	6961.20	5016.14	1260.91	-4887.66	40.4281509	-104.8510670	0.00
12620.00	90.23	271.04	6960.80	5115.39	1262.74	-4987.64	40.4281558	-104.8514261	0.00
12720.00	90.23	271.04	6960.41	5214.64	1264.56	-5087.63	40.4281607	-104.8517852	0.00
12820.00	90.23	271.04	6960.02	5313.89	1266.38	-5187.61	40.4281657	-104.8521444	0.00
12920.00	90.23	271.04	6959.62	5413.14	1268.20	-5287.59	40.4281706	-104.8525035	0.00
13020.00	90.23	271.04	6959.23	5512.40	1270.03	-5387.57	40.4281756	-104.8528626	0.00
13120.00	90.23	271.04	6958.83	5611.65	1271.85	-5487.56	40.4281805	-104.8532217	0.00
13220.00	90.23	271.04	6958.44	5710.90	1273.67	-5587.54	40.4281855	-104.8535809	0.00
13320.00	90.23	271.04	6958.04	5810.15	1275.49	-5687.52	40.4281904	-104.8539400	0.00
13420.00	90.23	271.04	6957.65	5909.40	1277.31	-5787.50	40.4281953	-104.8542991	0.00
13520.00	90.23	271.04	6957.26	6008.65	1279.14	-5887.49	40.4282003	-104.8546583	0.00
13620.00	90.23	271.04	6956.86	6107.90	1280.96	-5987.47	40.4282052	-104.8550174	0.00
13720.00	90.23	271.04	6956.47	6207.15	1282.78	-6087.45	40.4282101	-104.8553765	0.00
13820.00	90.23	271.04	6956.07	6306.40	1284.60	-6187.43	40.4282151	-104.8557356	0.00
13920.00	90.23	271.04	6955.68	6405.66	1286.43	-6287.42	40.4282200	-104.8560948	0.00
14020.00	90.23	271.04	6955.28	6504.91	1288.25	-6387.40	40.4282249	-104.8564539	0.00
14120.00	90.23	271.04	6954.89	6604.16	1290.07	-6487.38	40.4282299	-104.8568130	0.00
14220.00	90.23	271.04	6954.49	6703.41	1291.89	-6587.36	40.4282348	-104.8571721	0.00
14320.00	90.23	271.04	6954.10	6802.66	1293.72	-6687.35	40.4282397	-104.8575313	0.00
14420.00	90.23	271.04	6953.71	6901.91	1295.54	-6787.33	40.4282447	-104.8578904	0.00
14520.00	90.23	271.04	6953.31	7001.16	1297.36	-6887.31	40.4282496	-104.8582495	0.00

GREELEY-ROTHE_FEDERAL_32N-2B-L_PWP__REV-A.0_.las

14620.00	90.23	271.04	6952.92	7100.41	1299.18	-6987.29	40.4282545	-104.8586087	0.00
14720.00	90.23	271.04	6952.52	7199.67	1301.00	-7087.28	40.4282594	-104.8589678	0.00
14820.00	90.23	271.04	6952.13	7298.92	1302.83	-7187.26	40.4282643	-104.8593269	0.00
14920.00	90.23	271.04	6951.73	7398.17	1304.65	-7287.24	40.4282693	-104.8596860	0.00
15020.00	90.23	271.04	6951.34	7497.42	1306.47	-7387.23	40.4282742	-104.8600452	0.00
15120.00	90.23	271.04	6950.95	7596.67	1308.29	-7487.21	40.4282791	-104.8604043	0.00
15220.00	90.23	271.04	6950.55	7695.92	1310.12	-7587.19	40.4282840	-104.8607634	0.00
15320.00	90.23	271.04	6950.16	7795.17	1311.94	-7687.17	40.4282889	-104.8611225	0.00
15420.00	90.23	271.04	6949.76	7894.42	1313.76	-7787.16	40.4282939	-104.8614817	0.00
15520.00	90.23	271.04	6949.37	7993.67	1315.58	-7887.14	40.4282988	-104.8618408	0.00
15620.00	90.23	271.04	6948.97	8092.93	1317.40	-7987.12	40.4283037	-104.8621999	0.00
15720.00	90.23	271.04	6948.58	8192.18	1319.23	-8087.10	40.4283086	-104.8625591	0.00
15820.00	90.23	271.04	6948.19	8291.43	1321.05	-8187.09	40.4283135	-104.8629182	0.00
15920.00	90.23	271.04	6947.79	8390.68	1322.87	-8287.07	40.4283184	-104.8632773	0.00
16020.00	90.23	271.04	6947.40	8489.93	1324.69	-8387.05	40.4283233	-104.8636364	0.00
16120.00	90.23	271.04	6947.00	8589.18	1326.52	-8487.03	40.4283282	-104.8639956	0.00
16220.00	90.23	271.04	6946.61	8688.43	1328.34	-8587.02	40.4283331	-104.8643547	0.00
16320.00	90.23	271.04	6946.21	8787.68	1330.16	-8687.00	40.4283381	-104.8647138	0.00
16420.00	90.23	271.04	6945.82	8886.93	1331.98	-8786.98	40.4283430	-104.8650730	0.00
16520.00	90.23	271.04	6945.43	8986.19	1333.80	-8886.96	40.4283479	-104.8654321	0.00
16620.00	90.23	271.04	6945.03	9085.44	1335.63	-8986.95	40.4283528	-104.8657912	0.00
16720.00	90.23	271.04	6944.64	9184.69	1337.45	-9086.93	40.4283577	-104.8661503	0.00
16820.00	90.23	271.04	6944.24	9283.94	1339.27	-9186.91	40.4283626	-104.8665095	0.00
16920.00	90.23	271.04	6943.85	9383.19	1341.09	-9286.90	40.4283675	-104.8668686	0.00
17020.00	90.23	271.04	6943.45	9482.44	1342.92	-9386.88	40.4283724	-104.8672277	0.00
17120.00	90.23	271.04	6943.06	9581.69	1344.74	-9486.86	40.4283773	-104.8675869	0.00
17135.08	90.23	271.04	6943.00	9596.66	1345.01	-9501.93	40.4283780	-104.8676410	0.00



Planned Wellpath Report

GREELEY-ROTHER FEDERAL 32N-2B-L PWP (REV-A.0)

Page 1 of 8



REFERENCE WELLPATH IDENTIFICATION			
Operator	SRC ENERGY	Slot	SLOT#14 GREELEY-ROTHER FEDERAL 32N-2B-L (1143'FSL & 294'FEL, SEC.01)
Area	COLORADO	Well	GREELEY-ROTHER FEDERAL 32N-2B-L
Field	WELD COUNTY (NAD83,TRUE NORTH)	Wellbore	GREELEY-ROTHER FEDERAL 32N-2B-L PWB
Facility	SEC.01-T05N-R67W		

REPORT SETUP INFORMATION			
Projection System	NAD83 / Lambert Colorado SP, Northern Zone (501), US feet	Software System	WellArchitect® 5.0
North Reference	True	User	Doddanna
Scale	0.999961	Report Generated	10/4/2017 at 1:42:48 PM
Convergence at slot	0.43° East	Database/Source file	WellArchitectDB/GREELEY-ROTHER FEDERAL_32N-2B-L_PWP__REV-A.0_.xml

WELLPATH LOCATION						
	Local coordinates		Grid coordinates		Geographic coordinates	
	North[ft]	East[ft]	Easting[US ft]	Northing[US ft]	Latitude	Longitude
Slot Location	-1224.80	0.00	3185554.70	1398252.64	40°25'28.888"N	104°50'00.640"W
Facility Reference Pt			3185545.50	1399477.36	40°25'40.991"N	104°50'00.640"W
Field Reference Pt			3171284.48	1426358.81	40°30'07.643"N	104°53'02.634"W

WELLPATH DATUM			
Calculation method	Minimum curvature	PRECISION 462 (20') (RKB) to Facility Vertical Datum	4891.00ft
Horizontal Reference Pt	Slot	PRECISION 462 (20') (RKB) to Mean Sea Level	4891.00ft
Vertical Reference Pt	PRECISION 462 (20') (RKB)	PRECISION 462 (20') (RKB) to Mud Line at Slot (SLOT#14 GREELEY-ROTHER FEDERAL 32N-2B-L (1143'FSL & 294'FEL, SEC.01))	4891.00ft
MD Reference Pt	PRECISION 462 (20') (RKB)	Section Origin	N 0.00, E 0.00 ft
Field Vertical Reference	Mean Sea Level	Section Azimuth	278.06°



Planned Wellpath Report

GREELEY-ROTHER FEDERAL 32N-2B-L PWP (REV-A.0)

Page 2 of 8



REFERENCE WELLPATH IDENTIFICATION			
Operator	SRC ENERGY	Slot	SLOT#14 GREELEY-ROTHER FEDERAL 32N-2B-L (1143'FSL & 294'FEL, SEC.01)
Area	COLORADO	Well	GREELEY-ROTHER FEDERAL 32N-2B-L
Field	WELD COUNTY (NAD83,TRUE NORTH)	Wellbore	GREELEY-ROTHER FEDERAL 32N-2B-L PWB
Facility	SEC.01-T05N-R67W		

WELLPATH DATA (178 stations) † = interpolated/extrapolated station								
MD [ft]	Inclination [°]	Azimuth [°]	TVD [ft]	Vert Sect [ft]	North [ft]	East [ft]	DLS [°/100ft]	Comments
0.00†	0.000	36.627	0.00	0.00	0.00	0.00	0.00	
20.00	0.000	36.627	20.00	0.00	0.00	0.00	0.00	Tie On
120.00†	0.000	36.627	120.00	0.00	0.00	0.00	0.00	
220.00†	0.000	36.627	220.00	0.00	0.00	0.00	0.00	
250.00	0.000	36.627	250.00	0.00	0.00	0.00	0.00	End of Tangent
320.00†	1.400	36.627	319.99	-0.41	0.69	0.51	2.00	
420.00†	3.400	36.627	419.90	-2.41	4.05	3.01	2.00	
520.00†	5.400	36.627	519.60	-6.08	10.20	7.59	2.00	
620.00†	7.400	36.627	618.97	-11.41	19.15	14.24	2.00	
720.00†	9.400	36.627	717.89	-18.40	30.87	22.95	2.00	
820.00†	11.400	36.627	816.25	-27.03	45.36	33.72	2.00	
882.74	12.655	36.627	877.61	-33.28	55.85	41.52	2.00	End of Build
920.00†	12.655	36.627	913.96	-37.19	62.40	46.39	0.00	
1020.00†	12.655	36.627	1011.53	-47.66	79.98	59.46	0.00	
1120.00†	12.655	36.627	1109.10	-58.14	97.56	72.53	0.00	
1220.00†	12.655	36.627	1206.68	-68.62	115.15	85.60	0.00	
1320.00†	12.655	36.627	1304.25	-79.09	132.73	98.67	0.00	
1420.00†	12.655	36.627	1401.82	-89.57	150.31	111.74	0.00	
1520.00†	12.655	36.627	1499.39	-100.05	167.89	124.81	0.00	
1620.00†	12.655	36.627	1596.96	-110.53	185.47	137.88	0.00	
1720.00†	12.655	36.627	1694.53	-121.00	203.06	150.95	0.00	
1820.00†	12.655	36.627	1792.10	-131.48	220.64	164.02	0.00	
1920.00†	12.655	36.627	1889.67	-141.96	238.22	177.09	0.00	
2020.00†	12.655	36.627	1987.24	-152.43	255.80	190.16	0.00	
2120.00†	12.655	36.627	2084.81	-162.91	273.38	203.23	0.00	
2220.00†	12.655	36.627	2182.38	-173.39	290.96	216.30	0.00	
2320.00†	12.655	36.627	2279.95	-183.87	308.55	229.37	0.00	
2420.00†	12.655	36.627	2377.52	-194.34	326.13	242.44	0.00	
2520.00†	12.655	36.627	2475.09	-204.82	343.71	255.51	0.00	
2620.00†	12.655	36.627	2572.67	-215.30	361.29	268.59	0.00	



Planned Wellpath Report

GREELEY-ROTHER FEDERAL 32N-2B-L PWP (REV-A.0)

Page 3 of 8



REFERENCE WELLPATH IDENTIFICATION			
Operator	SRC ENERGY	Slot	SLOT#14 GREELEY-ROTHER FEDERAL 32N-2B-L (1143'FSL & 294'FEL, SEC.01)
Area	COLORADO	Well	GREELEY-ROTHER FEDERAL 32N-2B-L
Field	WELD COUNTY (NAD83,TRUE NORTH)	Wellbore	GREELEY-ROTHER FEDERAL 32N-2B-L PWB
Facility	SEC.01-T05N-R67W		

WELLPATH DATA (178 stations) † = interpolated/extrapolated station

MD [ft]	Inclination [°]	Azimuth [°]	TVD [ft]	Vert Sect [ft]	North [ft]	East [ft]	DLS [°/100ft]	Comments
2720.00†	12.655	36.627	2670.24	-225.77	378.87	281.66	0.00	
2820.00†	12.655	36.627	2767.81	-236.25	396.45	294.73	0.00	
2920.00†	12.655	36.627	2865.38	-246.73	414.04	307.80	0.00	
3020.00†	12.655	36.627	2962.95	-257.21	431.62	320.87	0.00	
3120.00†	12.655	36.627	3060.52	-267.68	449.20	333.94	0.00	
3220.00†	12.655	36.627	3158.09	-278.16	466.78	347.01	0.00	
3320.00†	12.655	36.627	3255.66	-288.64	484.36	360.08	0.00	
3420.00†	12.655	36.627	3353.23	-299.11	501.95	373.15	0.00	
3520.00†	12.655	36.627	3450.80	-309.59	519.53	386.22	0.00	
3620.00†	12.655	36.627	3548.37	-320.07	537.11	399.29	0.00	
3720.00†	12.655	36.627	3645.94	-330.55	554.69	412.36	0.00	
3820.00†	12.655	36.627	3743.51	-341.02	572.27	425.43	0.00	
3920.00†	12.655	36.627	3841.08	-351.50	589.85	438.50	0.00	
4020.00†	12.655	36.627	3938.66	-361.98	607.44	451.57	0.00	
4120.00†	12.655	36.627	4036.23	-372.45	625.02	464.64	0.00	
4220.00†	12.655	36.627	4133.80	-382.93	642.60	477.71	0.00	
4320.00†	12.655	36.627	4231.37	-393.41	660.18	490.78	0.00	
4420.00†	12.655	36.627	4328.94	-403.89	677.76	503.85	0.00	
4520.00†	12.655	36.627	4426.51	-414.36	695.35	516.92	0.00	
4620.00†	12.655	36.627	4524.08	-424.84	712.93	529.99	0.00	
4720.00†	12.655	36.627	4621.65	-435.32	730.51	543.06	0.00	
4820.00†	12.655	36.627	4719.22	-445.80	748.09	556.13	0.00	
4920.00†	12.655	36.627	4816.79	-456.27	765.67	569.20	0.00	
5020.00†	12.655	36.627	4914.36	-466.75	783.25	582.27	0.00	
5120.00†	12.655	36.627	5011.93	-477.23	800.84	595.34	0.00	
5220.00†	12.655	36.627	5109.50	-487.70	818.42	608.41	0.00	
5320.00†	12.655	36.627	5207.08	-498.18	836.00	621.48	0.00	
5420.00†	12.655	36.627	5304.65	-508.66	853.58	634.55	0.00	
5520.00†	12.655	36.627	5402.22	-519.14	871.16	647.62	0.00	
5620.00†	12.655	36.627	5499.79	-529.61	888.74	660.70	0.00	



Planned Wellpath Report

GREELEY-ROTHER FEDERAL 32N-2B-L PWP (REV-A.0)

Page 4 of 8



REFERENCE WELLPATH IDENTIFICATION			
Operator	SRC ENERGY	Slot	SLOT#14 GREELEY-ROTHER FEDERAL 32N-2B-L (1143'FSL & 294'FEL, SEC.01)
Area	COLORADO	Well	GREELEY-ROTHER FEDERAL 32N-2B-L
Field	WELD COUNTY (NAD83,TRUE NORTH)	Wellbore	GREELEY-ROTHER FEDERAL 32N-2B-L PWB
Facility	SEC.01-T05N-R67W		

WELLPATH DATA (178 stations) † = interpolated/extrapolated station

MD [ft]	Inclination [°]	Azimuth [°]	TVD [ft]	Vert Sect [ft]	North [ft]	East [ft]	DLS [°/100ft]	Comments
5720.00†	12.655	36.627	5597.36	-540.09	906.33	673.77	0.00	
5820.00†	12.655	36.627	5694.93	-550.57	923.91	686.84	0.00	
5920.00†	12.655	36.627	5792.50	-561.04	941.49	699.91	0.00	
6020.00†	12.655	36.627	5890.07	-571.52	959.07	712.98	0.00	
6120.00†	12.655	36.627	5987.64	-582.00	976.65	726.05	0.00	
6220.00†	12.655	36.627	6085.21	-592.48	994.24	739.12	0.00	
6320.00†	12.655	36.627	6182.78	-602.95	1011.82	752.19	0.00	
6414.51	12.655	36.627	6275.00	-612.85	1028.43	764.54	0.00	End of Tangent
6420.00†	12.379	34.737	6280.36	-613.41	1029.40	765.23	9.00	
6520.00†	10.578	349.140	6378.55	-615.25	1047.26	769.62	9.00	
6620.00†	15.191	313.374	6476.15	-601.55	1065.31	758.35	9.00	
6720.00†	22.580	297.147	6570.76	-572.66	1083.10	731.68	9.00	
6820.00†	30.807	288.928	6660.06	-529.28	1100.20	690.29	9.00	
6920.00†	39.349	283.961	6741.84	-472.48	1116.19	635.19	9.00	
7020.00†	48.036	280.542	6814.09	-403.66	1130.67	567.74	9.00	
7120.00†	56.800	277.952	6875.02	-324.52	1143.29	489.59	9.00	
7220.00†	65.608	275.838	6923.15	-237.00	1153.73	402.67	9.00	
7320.00†	74.442	274.001	6957.28	-143.25	1161.74	309.13	9.00	
7420.00†	83.289	272.317	6976.57	-45.60	1167.12	211.26	9.00	
7498.36	90.226	271.044	6981.00 [†]	32.10	1169.41	133.11	9.00	End of 3D Arc
7520.00†	90.226	271.044	6980.91	53.58	1169.80	111.47	0.00	
7620.00†	90.226	271.044	6980.52	152.83	1171.62	11.49	0.00	
7720.00†	90.226	271.044	6980.13	252.08	1173.45	-88.49	0.00	
7820.00†	90.226	271.044	6979.73	351.34	1175.27	-188.48	0.00	
7920.00†	90.226	271.044	6979.34	450.59	1177.09	-288.46	0.00	
8020.00†	90.226	271.044	6978.94	549.84	1178.91	-388.44	0.00	
8120.00†	90.226	271.044	6978.55	649.09	1180.74	-488.42	0.00	
8220.00†	90.226	271.044	6978.15	748.34	1182.56	-588.41	0.00	
8320.00†	90.226	271.044	6977.76	847.59	1184.38	-688.39	0.00	
8420.00†	90.226	271.044	6977.37	946.84	1186.20	-788.37	0.00	



Planned Wellpath Report

GREELEY-ROTHER FEDERAL 32N-2B-L PWP (REV-A.0)

Page 5 of 8



REFERENCE WELLPATH IDENTIFICATION			
Operator	SRC ENERGY	Slot	SLOT#14 GREELEY-ROTHER FEDERAL 32N-2B-L (1143'FSL & 294'FEL, SEC.01)
Area	COLORADO	Well	GREELEY-ROTHER FEDERAL 32N-2B-L
Field	WELD COUNTY (NAD83,TRUE NORTH)	Wellbore	GREELEY-ROTHER FEDERAL 32N-2B-L PWB
Facility	SEC.01-T05N-R67W		

WELLPATH DATA (178 stations) † = interpolated/extrapolated station								
MD [ft]	Inclination [°]	Azimuth [°]	TVD [ft]	Vert Sect [ft]	North [ft]	East [ft]	DLS [°/100ft]	Comments
8520.00†	90.226	271.044	6976.97	1046.09	1188.02	-888.36	0.00	
8620.00†	90.226	271.044	6976.58	1145.34	1189.85	-988.34	0.00	
8720.00†	90.226	271.044	6976.18	1244.60	1191.67	-1088.32	0.00	
8820.00†	90.226	271.044	6975.79	1343.85	1193.49	-1188.30	0.00	
8920.00†	90.226	271.044	6975.39	1443.10	1195.31	-1288.29	0.00	
9020.00†	90.226	271.044	6975.00	1542.35	1197.14	-1388.27	0.00	
9120.00†	90.226	271.044	6974.61	1641.60	1198.96	-1488.25	0.00	
9220.00†	90.226	271.044	6974.21	1740.85	1200.78	-1588.23	0.00	
9320.00†	90.226	271.044	6973.82	1840.10	1202.60	-1688.22	0.00	
9420.00†	90.226	271.044	6973.42	1939.35	1204.42	-1788.20	0.00	
9520.00†	90.226	271.044	6973.03	2038.61	1206.25	-1888.18	0.00	
9620.00†	90.226	271.044	6972.63	2137.86	1208.07	-1988.16	0.00	
9720.00†	90.226	271.044	6972.24	2237.11	1209.89	-2088.15	0.00	
9820.00†	90.226	271.044	6971.85	2336.36	1211.71	-2188.13	0.00	
9920.00†	90.226	271.044	6971.45	2435.61	1213.54	-2288.11	0.00	
10020.00†	90.226	271.044	6971.06	2534.86	1215.36	-2388.09	0.00	
10120.00†	90.226	271.044	6970.66	2634.11	1217.18	-2488.08	0.00	
10220.00†	90.226	271.044	6970.27	2733.36	1219.00	-2588.06	0.00	
10320.00†	90.226	271.044	6969.87	2832.61	1220.82	-2688.04	0.00	
10420.00†	90.226	271.044	6969.48	2931.87	1222.65	-2788.02	0.00	
10520.00†	90.226	271.044	6969.08	3031.12	1224.47	-2888.01	0.00	
10620.00†	90.226	271.044	6968.69	3130.37	1226.29	-2987.99	0.00	
10720.00†	90.226	271.044	6968.30	3229.62	1228.11	-3087.97	0.00	
10820.00†	90.226	271.044	6967.90	3328.87	1229.94	-3187.96	0.00	
10920.00†	90.226	271.044	6967.51	3428.12	1231.76	-3287.94	0.00	
11020.00†	90.226	271.044	6967.11	3527.37	1233.58	-3387.92	0.00	
11120.00†	90.226	271.044	6966.72	3626.62	1235.40	-3487.90	0.00	
11220.00†	90.226	271.044	6966.32	3725.87	1237.23	-3587.89	0.00	
11320.00†	90.226	271.044	6965.93	3825.13	1239.05	-3687.87	0.00	
11420.00†	90.226	271.044	6965.54	3924.38	1240.87	-3787.85	0.00	



Planned Wellpath Report

GREELEY-ROTHER FEDERAL 32N-2B-L PWP (REV-A.0)

Page 6 of 8



REFERENCE WELLPATH IDENTIFICATION			
Operator	SRC ENERGY	Slot	SLOT#14 GREELEY-ROTHER FEDERAL 32N-2B-L (1143'FSL & 294'FEL, SEC.01)
Area	COLORADO	Well	GREELEY-ROTHER FEDERAL 32N-2B-L
Field	WELD COUNTY (NAD83,TRUE NORTH)	Wellbore	GREELEY-ROTHER FEDERAL 32N-2B-L PWB
Facility	SEC.01-T05N-R67W		

WELLPATH DATA (178 stations) † = interpolated/extrapolated station

MD [ft]	Inclination [°]	Azimuth [°]	TVD [ft]	Vert Sect [ft]	North [ft]	East [ft]	DLS [°/100ft]	Comments
11520.00†	90.226	271.044	6965.14	4023.63	1242.69	-3887.83	0.00	
11620.00†	90.226	271.044	6964.75	4122.88	1244.51	-3987.82	0.00	
11720.00†	90.226	271.044	6964.35	4222.13	1246.34	-4087.80	0.00	
11820.00†	90.226	271.044	6963.96	4321.38	1248.16	-4187.78	0.00	
11920.00†	90.226	271.044	6963.56	4420.63	1249.98	-4287.76	0.00	
12020.00†	90.226	271.044	6963.17	4519.88	1251.80	-4387.75	0.00	
12120.00†	90.226	271.044	6962.78	4619.14	1253.63	-4487.73	0.00	
12220.00†	90.226	271.044	6962.38	4718.39	1255.45	-4587.71	0.00	
12320.00†	90.226	271.044	6961.99	4817.64	1257.27	-4687.69	0.00	
12420.00†	90.226	271.044	6961.59	4916.89	1259.09	-4787.68	0.00	
12520.00†	90.226	271.044	6961.20	5016.14	1260.91	-4887.66	0.00	
12620.00†	90.226	271.044	6960.80	5115.39	1262.74	-4987.64	0.00	
12720.00†	90.226	271.044	6960.41	5214.64	1264.56	-5087.63	0.00	
12820.00†	90.226	271.044	6960.02	5313.89	1266.38	-5187.61	0.00	
12920.00†	90.226	271.044	6959.62	5413.14	1268.20	-5287.59	0.00	
13020.00†	90.226	271.044	6959.23	5512.40	1270.03	-5387.57	0.00	
13120.00†	90.226	271.044	6958.83	5611.65	1271.85	-5487.56	0.00	
13220.00†	90.226	271.044	6958.44	5710.90	1273.67	-5587.54	0.00	
13320.00†	90.226	271.044	6958.04	5810.15	1275.49	-5687.52	0.00	
13420.00†	90.226	271.044	6957.65	5909.40	1277.31	-5787.50	0.00	
13520.00†	90.226	271.044	6957.26	6008.65	1279.14	-5887.49	0.00	
13620.00†	90.226	271.044	6956.86	6107.90	1280.96	-5987.47	0.00	
13720.00†	90.226	271.044	6956.47	6207.15	1282.78	-6087.45	0.00	
13820.00†	90.226	271.044	6956.07	6306.40	1284.60	-6187.43	0.00	
13920.00†	90.226	271.044	6955.68	6405.66	1286.43	-6287.42	0.00	
14020.00†	90.226	271.044	6955.28	6504.91	1288.25	-6387.40	0.00	
14120.00†	90.226	271.044	6954.89	6604.16	1290.07	-6487.38	0.00	
14220.00†	90.226	271.044	6954.49	6703.41	1291.89	-6587.36	0.00	
14320.00†	90.226	271.044	6954.10	6802.66	1293.72	-6687.35	0.00	
14420.00†	90.226	271.044	6953.71	6901.91	1295.54	-6787.33	0.00	



Planned Wellpath Report

GREELEY-ROTHER FEDERAL 32N-2B-L PWP (REV-A.0)

Page 7 of 8



REFERENCE WELLPATH IDENTIFICATION			
Operator	SRC ENERGY	Slot	SLOT#14 GREELEY-ROTHER FEDERAL 32N-2B-L (1143'FSL & 294'FEL, SEC.01)
Area	COLORADO	Well	GREELEY-ROTHER FEDERAL 32N-2B-L
Field	WELD COUNTY (NAD83,TRUE NORTH)	Wellbore	GREELEY-ROTHER FEDERAL 32N-2B-L PWB
Facility	SEC.01-T05N-R67W		

WELLPATH DATA (178 stations) † = interpolated/extrapolated station								
MD [ft]	Inclination [°]	Azimuth [°]	TVD [ft]	Vert Sect [ft]	North [ft]	East [ft]	DLS [°/100ft]	Comments
14520.00†	90.226	271.044	6953.31	7001.16	1297.36	-6887.31	0.00	
14620.00†	90.226	271.044	6952.92	7100.41	1299.18	-6987.29	0.00	
14720.00†	90.226	271.044	6952.52	7199.67	1301.00	-7087.28	0.00	
14820.00†	90.226	271.044	6952.13	7298.92	1302.83	-7187.26	0.00	
14920.00†	90.226	271.044	6951.73	7398.17	1304.65	-7287.24	0.00	
15020.00†	90.226	271.044	6951.34	7497.42	1306.47	-7387.23	0.00	
15120.00†	90.226	271.044	6950.95	7596.67	1308.29	-7487.21	0.00	
15220.00†	90.226	271.044	6950.55	7695.92	1310.12	-7587.19	0.00	
15320.00†	90.226	271.044	6950.16	7795.17	1311.94	-7687.17	0.00	
15420.00†	90.226	271.044	6949.76	7894.42	1313.76	-7787.16	0.00	
15520.00†	90.226	271.044	6949.37	7993.67	1315.58	-7887.14	0.00	
15620.00†	90.226	271.044	6948.97	8092.93	1317.40	-7987.12	0.00	
15720.00†	90.226	271.044	6948.58	8192.18	1319.23	-8087.10	0.00	
15820.00†	90.226	271.044	6948.19	8291.43	1321.05	-8187.09	0.00	
15920.00†	90.226	271.044	6947.79	8390.68	1322.87	-8287.07	0.00	
16020.00†	90.226	271.044	6947.40	8489.93	1324.69	-8387.05	0.00	
16120.00†	90.226	271.044	6947.00	8589.18	1326.52	-8487.03	0.00	
16220.00†	90.226	271.044	6946.61	8688.43	1328.34	-8587.02	0.00	
16320.00†	90.226	271.044	6946.21	8787.68	1330.16	-8687.00	0.00	
16420.00†	90.226	271.044	6945.82	8886.93	1331.98	-8786.98	0.00	
16520.00†	90.226	271.044	6945.43	8986.19	1333.80	-8886.96	0.00	
16620.00†	90.226	271.044	6945.03	9085.44	1335.63	-8986.95	0.00	
16720.00†	90.226	271.044	6944.64	9184.69	1337.45	-9086.93	0.00	
16820.00†	90.226	271.044	6944.24	9283.94	1339.27	-9186.91	0.00	
16920.00†	90.226	271.044	6943.85	9383.19	1341.09	-9286.90	0.00	
17020.00†	90.226	271.044	6943.45	9482.44	1342.92	-9386.88	0.00	
17120.00†	90.226	271.044	6943.06	9581.69	1344.74	-9486.86	0.00	
17135.08	90.226	271.044	6943.00 ²	9596.66	1345.01	-9501.93	0.00	End of Tangent



Planned Wellpath Report

GREELEY-ROTHER FEDERAL 32N-2B-L PWP (REV-A.0)

Page 8 of 8



REFERENCE WELLPATH IDENTIFICATION				
Operator	SRC ENERGY	Slot	SLOT#14 GREELEY-ROTHER FEDERAL 32N-2B-L (1143'FSL & 294'FEL, SEC.01)	
Area	COLORADO	Well	GREELEY-ROTHER FEDERAL 32N-2B-L	
Field	WELD COUNTY (NAD83,TRUE NORTH)	Wellbore	GREELEY-ROTHER FEDERAL 32N-2B-L PWB	
Facility	SEC.01-T05N-R67W			

HOLE & CASING SECTIONS									
- Ref Wellbore: GREELEY-ROTHER FEDERAL 32N-2B-L PWB					Ref Wellpath: GREELEY-ROTHER FEDERAL 32N-2B-L PWP (REV-A.0)				
String/Diameter	Start MD [ft]	End MD [ft]	Interval [ft]	Start TVD [ft]	End TVD [ft]	Start N/S [ft]	Start E/W [ft]	End N/S [ft]	End E/W [ft]
13.5in Open Hole	20.00	1750.00	1730.00	20.00	1723.80	0.00	0.00	208.33	154.87
9.625in Casing Surface	20.00	1750.00	1730.00	20.00	1723.80	0.00	0.00	208.33	154.87
8.5in Open Hole	1750.00	17135.08	15385.08	1723.80	N/A	208.33	154.87	N/A	N/A

TARGETS									
Name	MD [ft]	TVD [ft]	North [ft]	East [ft]	Grid East [US ft]	Grid North [US ft]	Latitude	Longitude	Shape
SEC.01-T05N-R67W		21.00	1224.80	0.00	3185545.50	1399477.36	40°25'40.991"N	104°50'00.640"W	polygon
SEC.02-T05N-R67W		21.00	1224.80	0.00	3185545.50	1399477.36	40°25'40.991"N	104°50'00.640"W	polygon
2) GREELEY ROTH FEDERL 32N-2B-L BHL ON PLAT (2584'FSL & 150'FWL, SEC.02)	17135.08	6943.00	1345.01	-9501.93	3176043.32	1399526.14	40°25'42.161"N	104°52'03.508"W	circle
1) GREELEY ROTH FEDERAL 32N-2B-L TOP OF PROD ON PLAT (2307'FSL & 150'FEL, SEC.01)	7498.36	6981.00	1169.41	133.11	3185679.02	1399422.96	40°25'40.444"N	104°49'58.919"W	circle

SURVEY PROGRAM -				
Ref Wellbore: GREELEY-ROTHER FEDERAL 32N-2B-L PWB			Ref Wellpath: GREELEY-ROTHER FEDERAL 32N-2B-L PWP (REV-A.0)	
Start MD [ft]	End MD [ft]	Positional Uncertainty Model	Log Name/Comment	Wellbore
20.00	1750.00	Custom BHI NaviTrak (Standard Rotating+Axial Corr) (Rockies 0.03Gt model)		GREELEY-ROTHER FEDERAL 32N-2B-L PWB
1750.00	17135.08	Custom BHI AutoTrak Curve (IFR1, Short) (Rockies 0.03Gt model)		GREELEY-ROTHER FEDERAL 32N-2B-L PWB