

SRC ENERGY

Location: COLORADO Slot: SLOT#13 GREELEY-ROTHER FEDERAL 32C-2-L (1163'FSL & 295'FEL, SEC.01)
Field: WELD COUNTY (NAD83, TRUE NORTH) Well: GREELEY-ROTHER FEDERAL 32C-2-L
Facility: SEC.01-T05N-R67W Wellbore: GREELEY-ROTHER FEDERAL 32C-2-L PWB

Pilot reference wellpath is GREELEY-ROTHER FEDERAL 32C-2-L PWP (REV-A.0)	Grid System: NAD83 / Lambert Colorado SP, Northern Zone (501), US feet
True vertical depths are referenced to PRECISION 462 (20) (RKB)	* = Wellpath was transformed from a different geodetic datum
Measured depths are referenced to PRECISION 462 (20) (RKB)	North Reference: True north
PRECISION 462 (20) (RKB) to Mean Sea Level: 4891 feet	Scale: True distance
Mean Sea Level to Mud line (At Slot: SLOT#13 GREELEY-ROTHER FEDERAL 32C-2-L (1163'FSL & 295'FEL, SEC.01)): 0 feet	Depths are in feet
Coordinates are in feet referenced to Slot	Created by: doddanna on 2017-10-04
	Database: WellArchitectDB

Location Information

Facility Name			Grid East (US ft)	Grid North (US ft)	Latitude	Longitude
SEC.01-T05N-R67W			3185545.499	1399477.355	40°25'40.991"N	104°50'00.640"W
Slot	Local N (ft)	Local E (ft)	Grid East (US ft)	Grid North (US ft)	Latitude	Longitude
SLOT#13 GREELEY-ROTHER FEDERAL 32C-2-L (1163'FSL & 295'FEL, SEC.01)	-1204.77	-0.23	3185554.321	1399272.671	40°25'29.086"N	104°50'00.640"W
PRECISION 462 (20) (RKB) to Mud line (At Slot: SLOT#13 GREELEY-ROTHER FEDERAL 32C-2-L (1163'FSL & 295'FEL, SEC.01))					4891ft	
Mean Sea Level to Mud line (At Slot: SLOT#13 GREELEY-ROTHER FEDERAL 32C-2-L (1163'FSL & 295'FEL, SEC.01))					0ft	
PRECISION 462 (20) (RKB) to Mean Sea Level					4891ft	

Survey Program

Start MD (ft)	End MD (ft)	Tool	Model	Log Name/Comment	Wellbore
20.00	1750.00	BHI NavTrak	Custom BHI NavTrak (FR1, Standard Rotating+Axial Corr) (Rockies 0.03Gr model)		GREELEY-ROTHER FEDERAL 32C-2-L PWB
1750.00	17292.80	BHI AutoTrak Curve	Custom BHI AutoTrak Curve (FR1, Short) (Rockies 0.03Gr model)		GREELEY-ROTHER FEDERAL 32C-2-L PWB

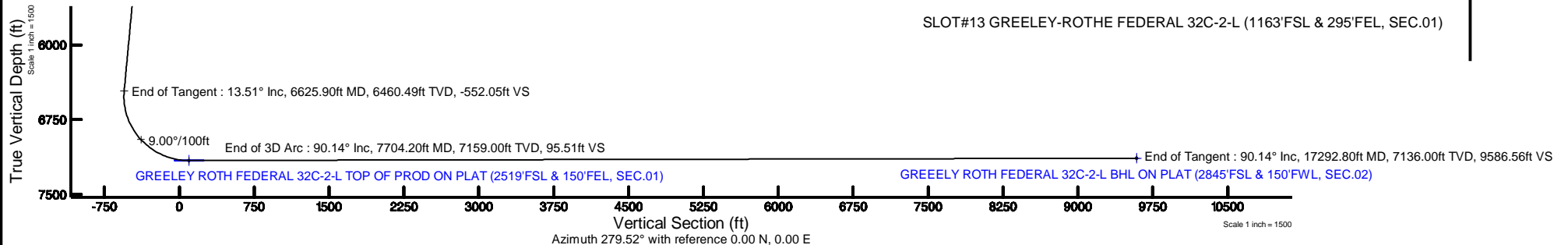


SRC ENERGY



BGGM (1900.0 to 2018.0) Dip: 66.87° Field: 52416.1 nT
Magnetic North is 8.39 degrees East of True North (at 9/22/2017)

To correct azimuth from Magnetic to True add 8.39 degrees



Targets

Name	MD (ft)	TVD (ft)	Local N (ft)	Local E (ft)	Grid East (US ft)	Grid North (US ft)	Latitude	Longitude
SEC.01-T05N-R67W		21.00	1204.77	0.23	3185545.50	1399477.36	40°25'40.991"N	104°50'00.640"W
SEC.02-T05N-R67W		21.00	1204.77	0.23	3185545.50	1399477.36	40°25'40.991"N	104°50'00.640"W
GREELEY ROTH FEDERAL 32C-2-L BHL ON PLAT (2845'FSL & 150'FWL, SEC.02)	17292.80	7136.00	1585.44	-9454.55	3176088.50	1399786.95	40°25'44.735"N	104°52'02.899"W
GREELEY ROTH FEDERAL 32C-2-L TOP OF PROD ON PLAT (2519'FSL & 150'FEL, SEC.01)	7704.20	7159.00	1361.04	131.39	3185675.47	1399634.60	40°25'42.535"N	104°49'58.944"W

Hole and Casing Sections

Name	Start MD (ft)	End MD (ft)	Interval (ft)	Start TVD (ft)	End TVD (ft)	Start Local N (ft)	Start Local E (ft)	End Local N (ft)	End Local E (ft)	Wellbore
13.5in Open Hole	20.00	1750.00	1730.00	20.00	1719.55	0.00	0.00	239.58	151.75	GREELEY-ROTHER FEDERAL 32C-2-L PWB
9.625in Casing Surface	20.00	1750.00	1730.00	20.00	1719.55	0.00	0.00	239.58	151.75	GREELEY-ROTHER FEDERAL 32C-2-L PWB
8.5in Open Hole	1750.00	17292.80	15542.80	1719.55	7136.00	239.58	151.75	1585.44	-9454.55	GREELEY-ROTHER FEDERAL 32C-2-L PWB

Well Profile Data

Design Comment	MD (ft)	Inc (°)	Az (°)	TVD (ft)	Local N (ft)	Local E (ft)	DLS (°/100ft)	VS (ft)
Tie On	20.00	0.000	32.349	20.00	0.00	0.00	0.00	0.00
End of Tangent	200.00	0.000	32.349	200.00	0.00	0.00	0.00	0.00
End of Build	875.60	13.512	32.349	869.36	66.99	42.43	2.00	-30.77
End of Tangent	6625.90	13.512	32.349	6460.49	1202.03	761.33	0.00	-552.05
End of 3D Arc	7704.20	90.137	271.341	7159.00	1361.04	131.39	9.00	95.51
End of Tangent	17292.80	90.137	271.341	7136.00	1585.44	-9454.55	0.00	9586.56

GREELEY-ROTHE_FEDERAL_32C-2-L_PWP__REV-A.0_.las

~VERSION INFORMATION

VERS. 2.0 : CWLS LOG ASCII STANDARD-VERSION 2.0

WRAP. NO : ASCII DATA SECTION CONTAINS ONE ROW PER WELLPATH STATION

~WELL INFORMATION

#MNEM	.UNITS	DATA	:DESCRIPTION
#----	.-----	----	:-----
STRT	.ft	0.00	:START MD
STOP	.ft	17292.80	:STOP MD
STEP	.ft	0.0	:STEP (non-uniform increment)
NULL	.	-999.99	:NULL
COMP	.	SRC ENERGY	:OPERATOR
WELL	.	GREELEY-ROTHE FEDERAL 32C-2-L	:WELL
FLD	.	WELD COUNTY (NAD83,TRUE NORTH)	:FIELD
LOC	.	COLORADO	:AREA (aka: Location)
CNTY	.	N/A	:COUNTY
STAT	.	N/A	:STATE
CTRY	.	N/A	:COUNTRY
SRVC	.	Baker Hughes	:CONTRACTOR
DATE	.	10/04/2017	:LOG REV DATE
API	.		:API NUMBER

~OTHER INFORMATION

#Software: WellArchitect(R) Version 5.0

#MNEM	.UNITS	DATA	:DESCRIPTION
#----	.-----	----	:-----
WPTYPE	.	PLANNED WELLPATH	:WELLPATH TYPE
FACILITY	.	SEC.01-T05N-R67W	:FACILITY
SLOT	.	SLOT#13 GREELEY-ROTHE FEDERAL 32C-2-L (1163'FSL & 295'FEL, SEC.01)	:SLOT
WELLBORE	.	GREELEY-ROTHE FEDERAL 32C-2-L PWB	:WELLBORE
WELLPATH	.	GREELEY-ROTHE FEDERAL 32C-2-L PWP (REV-A.0)	:WELLPATH
MDREFPT	.	PRECISION 462 (20') (RKB)	:MD REFERENCE POINT
TVDREFPT	.	PRECISION 462 (20') (RKB)	:TVD REFERENCE POINT
LCLREFPT	.	Slot	:LOCAL COORDINATE REFERENCE PT

GREELEY-ROTHER_FEDERAL_32C-2-L_PWP__REV-A.0_.las

VSAZIMUTH.deg	279.52	:VERTICAL SECTION AZIMUTH
VSORIGIN .ft	0.00	:VERTICAL SECTION ORIGIN NORTH
VSORIGE .ft	0.00	:VERTICAL SECTION ORIGIN EAST

~CURVE (WELLPATH) INFORMATION

#MNEM	.UNITS	:DESCRIPTION
#----	.-----	:-----
DEPT	.ft	:MEASURED DEPTH
INC	.deg	:INCLINATION
AZI	.deg	:AZIMUTH
TVD	.ft	:TRUE VERTICAL DEPTH
SECT	.ft	:CROSS SECTION (CURTAIN/VERTICAL)
LOCALN	.ft	:LOCAL NORTH
LOCALE	.ft	:LOCAL EAST
LAT	.deg	:LATITUDE
LONG	.deg	:LONGITUDE
DLS	.deg/100ft	:DOGLEG SEVERITY

~ASCII DATA

0.00	0.00	32.35	0.00	0.00	0.00	0.00	40.4247461	-104.8335119	0.00
20.00	0.00	32.35	20.00	0.00	0.00	0.00	40.4247461	-104.8335119	0.00
120.00	0.00	32.35	120.00	0.00	0.00	0.00	40.4247461	-104.8335119	0.00
200.00	0.00	32.35	200.00	0.00	0.00	0.00	40.4247461	-104.8335119	0.00
220.00	0.40	32.35	220.00	-0.03	0.06	0.04	40.4247463	-104.8335118	2.00
320.00	2.40	32.35	319.96	-0.97	2.12	1.34	40.4247519	-104.8335071	2.00
420.00	4.40	32.35	419.78	-3.28	7.13	4.52	40.4247657	-104.8334957	2.00
520.00	6.40	32.35	519.33	-6.93	15.08	9.55	40.4247875	-104.8334776	2.00
620.00	8.40	32.35	618.50	-11.92	25.96	16.44	40.4248174	-104.8334529	2.00
720.00	10.40	32.35	717.15	-18.26	39.76	25.18	40.4248552	-104.8334215	2.00
820.00	12.40	32.35	815.17	-25.93	56.46	35.76	40.4249011	-104.8333835	2.00
875.60	13.51	32.35	869.36	-30.77	66.99	42.43	40.4249300	-104.8333596	2.00
920.00	13.51	32.35	912.53	-34.79	75.75	47.98	40.4249540	-104.8333396	0.00
1020.00	13.51	32.35	1009.76	-43.86	95.49	60.48	40.4250082	-104.8332947	0.00
1120.00	13.51	32.35	1106.99	-52.92	115.23	72.98	40.4250624	-104.8332498	0.00

GREELEY-ROTHE_FEDERAL_32C-2-L_PWP__REV-A.0_.las

1220.00	13.51	32.35	1204.22	-61.99	134.97	85.49	40.4251166	-104.8332049	0.00
1320.00	13.51	32.35	1301.45	-71.05	154.71	97.99	40.4251708	-104.8331600	0.00
1420.00	13.51	32.35	1398.69	-80.12	174.45	110.49	40.4252249	-104.8331151	0.00
1520.00	13.51	32.35	1495.92	-89.18	194.19	122.99	40.4252791	-104.8330702	0.00
1620.00	13.51	32.35	1593.15	-98.25	213.92	135.49	40.4253333	-104.8330253	0.00
1720.00	13.51	32.35	1690.38	-107.31	233.66	148.00	40.4253875	-104.8329804	0.00
1820.00	13.51	32.35	1787.61	-116.38	253.40	160.50	40.4254417	-104.8329355	0.00
1920.00	13.51	32.35	1884.85	-125.44	273.14	173.00	40.4254958	-104.8328906	0.00
2020.00	13.51	32.35	1982.08	-134.51	292.88	185.50	40.4255500	-104.8328457	0.00
2120.00	13.51	32.35	2079.31	-143.58	312.62	198.00	40.4256042	-104.8328008	0.00
2220.00	13.51	32.35	2176.54	-152.64	332.36	210.51	40.4256584	-104.8327559	0.00
2320.00	13.51	32.35	2273.78	-161.71	352.10	223.01	40.4257126	-104.8327110	0.00
2420.00	13.51	32.35	2371.01	-170.77	371.83	235.51	40.4257668	-104.8326661	0.00
2520.00	13.51	32.35	2468.24	-179.84	391.57	248.01	40.4258209	-104.8326211	0.00
2620.00	13.51	32.35	2565.47	-188.90	411.31	260.51	40.4258751	-104.8325762	0.00
2720.00	13.51	32.35	2662.70	-197.97	431.05	273.02	40.4259293	-104.8325313	0.00
2820.00	13.51	32.35	2759.94	-207.03	450.79	285.52	40.4259835	-104.8324864	0.00
2920.00	13.51	32.35	2857.17	-216.10	470.53	298.02	40.4260377	-104.8324415	0.00
3020.00	13.51	32.35	2954.40	-225.16	490.27	310.52	40.4260918	-104.8323966	0.00
3120.00	13.51	32.35	3051.63	-234.23	510.01	323.02	40.4261460	-104.8323517	0.00
3220.00	13.51	32.35	3148.86	-243.29	529.74	335.52	40.4262002	-104.8323068	0.00
3320.00	13.51	32.35	3246.10	-252.36	549.48	348.03	40.4262544	-104.8322619	0.00
3420.00	13.51	32.35	3343.33	-261.43	569.22	360.53	40.4263086	-104.8322170	0.00
3520.00	13.51	32.35	3440.56	-270.49	588.96	373.03	40.4263627	-104.8321721	0.00
3620.00	13.51	32.35	3537.79	-279.56	608.70	385.53	40.4264169	-104.8321272	0.00
3720.00	13.51	32.35	3635.02	-288.62	628.44	398.03	40.4264711	-104.8320823	0.00
3820.00	13.51	32.35	3732.26	-297.69	648.18	410.54	40.4265253	-104.8320374	0.00
3920.00	13.51	32.35	3829.49	-306.75	667.92	423.04	40.4265795	-104.8319925	0.00
4020.00	13.51	32.35	3926.72	-315.82	687.66	435.54	40.4266336	-104.8319476	0.00
4120.00	13.51	32.35	4023.95	-324.88	707.39	448.04	40.4266878	-104.8319027	0.00
4220.00	13.51	32.35	4121.19	-333.95	727.13	460.54	40.4267420	-104.8318578	0.00
4320.00	13.51	32.35	4218.42	-343.01	746.87	473.05	40.4267962	-104.8318129	0.00
4420.00	13.51	32.35	4315.65	-352.08	766.61	485.55	40.4268504	-104.8317679	0.00
4520.00	13.51	32.35	4412.88	-361.14	786.35	498.05	40.4269045	-104.8317230	0.00

GREELEY-ROTHE_FEDERAL_32C-2-L_PWP__REV-A.0_.las

4620.00	13.51	32.35	4510.11	-370.21	806.09	510.55	40.4269587	-104.8316781	0.00
4720.00	13.51	32.35	4607.35	-379.28	825.83	523.05	40.4270129	-104.8316332	0.00
4820.00	13.51	32.35	4704.58	-388.34	845.57	535.56	40.4270671	-104.8315883	0.00
4920.00	13.51	32.35	4801.81	-397.41	865.30	548.06	40.4271213	-104.8315434	0.00
5020.00	13.51	32.35	4899.04	-406.47	885.04	560.56	40.4271754	-104.8314985	0.00
5120.00	13.51	32.35	4996.27	-415.54	904.78	573.06	40.4272296	-104.8314536	0.00
5220.00	13.51	32.35	5093.51	-424.60	924.52	585.56	40.4272838	-104.8314087	0.00
5320.00	13.51	32.35	5190.74	-433.67	944.26	598.07	40.4273380	-104.8313638	0.00
5420.00	13.51	32.35	5287.97	-442.73	964.00	610.57	40.4273922	-104.8313189	0.00
5520.00	13.51	32.35	5385.20	-451.80	983.74	623.07	40.4274463	-104.8312740	0.00
5620.00	13.51	32.35	5482.43	-460.86	1003.48	635.57	40.4275005	-104.8312291	0.00
5720.00	13.51	32.35	5579.67	-469.93	1023.22	648.07	40.4275547	-104.8311842	0.00
5820.00	13.51	32.35	5676.90	-478.99	1042.95	660.58	40.4276089	-104.8311393	0.00
5920.00	13.51	32.35	5774.13	-488.06	1062.69	673.08	40.4276631	-104.8310943	0.00
6020.00	13.51	32.35	5871.36	-497.13	1082.43	685.58	40.4277172	-104.8310494	0.00
6120.00	13.51	32.35	5968.59	-506.19	1102.17	698.08	40.4277714	-104.8310045	0.00
6220.00	13.51	32.35	6065.83	-515.26	1121.91	710.58	40.4278256	-104.8309596	0.00
6320.00	13.51	32.35	6163.06	-524.32	1141.65	723.09	40.4278798	-104.8309147	0.00
6420.00	13.51	32.35	6260.29	-533.39	1161.39	735.59	40.4279340	-104.8308698	0.00
6520.00	13.51	32.35	6357.52	-542.45	1181.13	748.09	40.4279881	-104.8308249	0.00
6620.00	13.51	32.35	6454.76	-551.52	1200.86	760.59	40.4280423	-104.8307800	0.00
6625.90	13.51	32.35	6460.49	-552.05	1202.03	761.33	40.4280455	-104.8307773	0.00
6720.00	11.74	353.67	6552.47	-553.71	1220.87	766.17	40.4280972	-104.8307600	9.00
6820.00	15.67	318.63	6649.77	-540.42	1241.16	756.10	40.4281529	-104.8307961	9.00
6920.00	22.65	300.96	6744.25	-511.96	1261.24	730.61	40.4282080	-104.8308877	9.00
7020.00	30.66	291.71	6833.59	-469.04	1280.61	690.33	40.4282612	-104.8310324	9.00
7120.00	39.07	286.07	6915.59	-412.69	1298.81	636.25	40.4283112	-104.8312266	9.00
7220.00	47.67	282.19	6988.23	-344.32	1315.37	569.71	40.4283566	-104.8314656	9.00
7320.00	56.37	279.25	7049.72	-265.61	1329.89	492.33	40.4283965	-104.8317436	9.00
7420.00	65.12	276.85	7098.55	-178.49	1342.01	406.03	40.4284298	-104.8320535	9.00
7520.00	73.91	274.78	7133.52	-85.11	1351.45	312.92	40.4284557	-104.8323880	9.00
7620.00	82.72	272.88	7153.76	12.23	1357.95	215.31	40.4284735	-104.8327386	9.00
7704.20	90.14	271.34	7159.00	95.51	1361.04	131.39	40.4284820	-104.8330400	9.00
7720.00	90.14	271.34	7158.96	111.14	1361.41	115.60	40.4284830	-104.8330967	0.00

GREELEY-ROTHE_FEDERAL_32C-2-L_PWP__REV-A.0_.las

7820.00	90.14	271.34	7158.72	210.13	1363.75	15.63	40.4284894	-104.8334558	0.00
7920.00	90.14	271.34	7158.48	309.11	1366.09	-84.34	40.4284959	-104.8338149	0.00
8020.00	90.14	271.34	7158.24	408.09	1368.43	-184.32	40.4285023	-104.8341740	0.00
8120.00	90.14	271.34	7158.00	507.07	1370.77	-284.29	40.4285087	-104.8345331	0.00
8220.00	90.14	271.34	7157.76	606.06	1373.11	-384.26	40.4285151	-104.8348922	0.00
8320.00	90.14	271.34	7157.52	705.04	1375.45	-484.23	40.4285215	-104.8352513	0.00
8420.00	90.14	271.34	7157.28	804.02	1377.79	-584.21	40.4285280	-104.8356104	0.00
8520.00	90.14	271.34	7157.04	903.00	1380.13	-684.18	40.4285344	-104.8359694	0.00
8620.00	90.14	271.34	7156.80	1001.99	1382.47	-784.15	40.4285408	-104.8363285	0.00
8720.00	90.14	271.34	7156.56	1100.97	1384.81	-884.12	40.4285472	-104.8366876	0.00
8820.00	90.14	271.34	7156.32	1199.95	1387.15	-984.09	40.4285536	-104.8370467	0.00
8920.00	90.14	271.34	7156.08	1298.94	1389.49	-1084.07	40.4285600	-104.8374058	0.00
9020.00	90.14	271.34	7155.84	1397.92	1391.83	-1184.04	40.4285664	-104.8377649	0.00
9120.00	90.14	271.34	7155.60	1496.90	1394.17	-1284.01	40.4285729	-104.8381240	0.00
9220.00	90.14	271.34	7155.36	1595.88	1396.51	-1383.98	40.4285793	-104.8384831	0.00
9320.00	90.14	271.34	7155.12	1694.87	1398.85	-1483.96	40.4285857	-104.8388422	0.00
9420.00	90.14	271.34	7154.88	1793.85	1401.19	-1583.93	40.4285921	-104.8392013	0.00
9520.00	90.14	271.34	7154.64	1892.83	1403.53	-1683.90	40.4285985	-104.8395603	0.00
9620.00	90.14	271.34	7154.40	1991.81	1405.87	-1783.87	40.4286049	-104.8399194	0.00
9720.00	90.14	271.34	7154.16	2090.80	1408.21	-1883.85	40.4286113	-104.8402785	0.00
9820.00	90.14	271.34	7153.92	2189.78	1410.55	-1983.82	40.4286177	-104.8406376	0.00
9920.00	90.14	271.34	7153.69	2288.76	1412.89	-2083.79	40.4286241	-104.8409967	0.00
10020.00	90.14	271.34	7153.45	2387.75	1415.23	-2183.76	40.4286305	-104.8413558	0.00
10120.00	90.14	271.34	7153.21	2486.73	1417.57	-2283.73	40.4286369	-104.8417149	0.00
10220.00	90.14	271.34	7152.97	2585.71	1419.91	-2383.71	40.4286433	-104.8420740	0.00
10320.00	90.14	271.34	7152.73	2684.69	1422.25	-2483.68	40.4286497	-104.8424331	0.00
10420.00	90.14	271.34	7152.49	2783.68	1424.60	-2583.65	40.4286561	-104.8427922	0.00
10520.00	90.14	271.34	7152.25	2882.66	1426.94	-2683.62	40.4286625	-104.8431513	0.00
10620.00	90.14	271.34	7152.01	2981.64	1429.28	-2783.60	40.4286689	-104.8435104	0.00
10720.00	90.14	271.34	7151.77	3080.62	1431.62	-2883.57	40.4286753	-104.8438694	0.00
10820.00	90.14	271.34	7151.53	3179.61	1433.96	-2983.54	40.4286817	-104.8442285	0.00
10920.00	90.14	271.34	7151.29	3278.59	1436.30	-3083.51	40.4286881	-104.8445876	0.00
11020.00	90.14	271.34	7151.05	3377.57	1438.64	-3183.49	40.4286944	-104.8449467	0.00
11120.00	90.14	271.34	7150.81	3476.56	1440.98	-3283.46	40.4287008	-104.8453058	0.00

GREELEY-ROTHE_FEDERAL_32C-2-L_PWP__REV-A.0_.las

11220.00	90.14	271.34	7150.57	3575.54	1443.32	-3383.43	40.4287072	-104.8456649	0.00
11320.00	90.14	271.34	7150.33	3674.52	1445.66	-3483.40	40.4287136	-104.8460240	0.00
11420.00	90.14	271.34	7150.09	3773.50	1448.00	-3583.38	40.4287200	-104.8463831	0.00
11520.00	90.14	271.34	7149.85	3872.49	1450.34	-3683.35	40.4287264	-104.8467422	0.00
11620.00	90.14	271.34	7149.61	3971.47	1452.68	-3783.32	40.4287328	-104.8471013	0.00
11720.00	90.14	271.34	7149.37	4070.45	1455.02	-3883.29	40.4287391	-104.8474604	0.00
11820.00	90.14	271.34	7149.13	4169.43	1457.36	-3983.26	40.4287455	-104.8478195	0.00
11920.00	90.14	271.34	7148.89	4268.42	1459.70	-4083.24	40.4287519	-104.8481786	0.00
12020.00	90.14	271.34	7148.65	4367.40	1462.04	-4183.21	40.4287583	-104.8485377	0.00
12120.00	90.14	271.34	7148.41	4466.38	1464.38	-4283.18	40.4287647	-104.8488967	0.00
12220.00	90.14	271.34	7148.17	4565.36	1466.72	-4383.15	40.4287710	-104.8492558	0.00
12320.00	90.14	271.34	7147.93	4664.35	1469.06	-4483.13	40.4287774	-104.8496149	0.00
12420.00	90.14	271.34	7147.69	4763.33	1471.40	-4583.10	40.4287838	-104.8499740	0.00
12520.00	90.14	271.34	7147.45	4862.31	1473.74	-4683.07	40.4287901	-104.8503331	0.00
12620.00	90.14	271.34	7147.21	4961.30	1476.08	-4783.04	40.4287965	-104.8506922	0.00
12720.00	90.14	271.34	7146.97	5060.28	1478.42	-4883.02	40.4288029	-104.8510513	0.00
12820.00	90.14	271.34	7146.73	5159.26	1480.76	-4982.99	40.4288093	-104.8514104	0.00
12920.00	90.14	271.34	7146.49	5258.24	1483.10	-5082.96	40.4288156	-104.8517695	0.00
13020.00	90.14	271.34	7146.25	5357.23	1485.44	-5182.93	40.4288220	-104.8521286	0.00
13120.00	90.14	271.34	7146.01	5456.21	1487.78	-5282.90	40.4288284	-104.8524877	0.00
13220.00	90.14	271.34	7145.77	5555.19	1490.12	-5382.88	40.4288347	-104.8528468	0.00
13320.00	90.14	271.34	7145.53	5654.17	1492.47	-5482.85	40.4288411	-104.8532059	0.00
13420.00	90.14	271.34	7145.29	5753.16	1494.81	-5582.82	40.4288474	-104.8535650	0.00
13520.00	90.14	271.34	7145.05	5852.14	1497.15	-5682.79	40.4288538	-104.8539241	0.00
13620.00	90.14	271.34	7144.81	5951.12	1499.49	-5782.77	40.4288602	-104.8542831	0.00
13720.00	90.14	271.34	7144.57	6050.11	1501.83	-5882.74	40.4288665	-104.8546422	0.00
13820.00	90.14	271.34	7144.33	6149.09	1504.17	-5982.71	40.4288729	-104.8550013	0.00
13920.00	90.14	271.34	7144.09	6248.07	1506.51	-6082.68	40.4288792	-104.8553604	0.00
14020.00	90.14	271.34	7143.85	6347.05	1508.85	-6182.66	40.4288856	-104.8557195	0.00
14120.00	90.14	271.34	7143.61	6446.04	1511.19	-6282.63	40.4288920	-104.8560786	0.00
14220.00	90.14	271.34	7143.37	6545.02	1513.53	-6382.60	40.4288983	-104.8564377	0.00
14320.00	90.14	271.34	7143.13	6644.00	1515.87	-6482.57	40.4289047	-104.8567968	0.00
14420.00	90.14	271.34	7142.89	6742.98	1518.21	-6582.54	40.4289110	-104.8571559	0.00
14520.00	90.14	271.34	7142.65	6841.97	1520.55	-6682.52	40.4289174	-104.8575150	0.00

GREELEY-ROTHER_FEDERAL_32C-2-L_PWP__REV-A.0_.las

14620.00	90.14	271.34	7142.41	6940.95	1522.89	-6782.49	40.4289237	-104.8578741	0.00
14720.00	90.14	271.34	7142.17	7039.93	1525.23	-6882.46	40.4289301	-104.8582332	0.00
14820.00	90.14	271.34	7141.93	7138.92	1527.57	-6982.43	40.4289364	-104.8585923	0.00
14920.00	90.14	271.34	7141.69	7237.90	1529.91	-7082.41	40.4289428	-104.8589514	0.00
15020.00	90.14	271.34	7141.45	7336.88	1532.25	-7182.38	40.4289491	-104.8593105	0.00
15120.00	90.14	271.34	7141.21	7435.86	1534.59	-7282.35	40.4289554	-104.8596696	0.00
15220.00	90.14	271.34	7140.97	7534.85	1536.93	-7382.32	40.4289618	-104.8600287	0.00
15320.00	90.14	271.34	7140.73	7633.83	1539.27	-7482.30	40.4289681	-104.8603878	0.00
15420.00	90.14	271.34	7140.49	7732.81	1541.61	-7582.27	40.4289745	-104.8607468	0.00
15520.00	90.14	271.34	7140.25	7831.79	1543.95	-7682.24	40.4289808	-104.8611059	0.00
15620.00	90.14	271.34	7140.01	7930.78	1546.29	-7782.21	40.4289871	-104.8614650	0.00
15720.00	90.14	271.34	7139.77	8029.76	1548.63	-7882.18	40.4289935	-104.8618241	0.00
15820.00	90.14	271.34	7139.53	8128.74	1550.97	-7982.16	40.4289998	-104.8621832	0.00
15920.00	90.14	271.34	7139.29	8227.73	1553.31	-8082.13	40.4290061	-104.8625423	0.00
16020.00	90.14	271.34	7139.05	8326.71	1555.65	-8182.10	40.4290125	-104.8629014	0.00
16120.00	90.14	271.34	7138.81	8425.69	1557.99	-8282.07	40.4290188	-104.8632605	0.00
16220.00	90.14	271.34	7138.57	8524.67	1560.34	-8382.05	40.4290251	-104.8636196	0.00
16320.00	90.14	271.34	7138.33	8623.66	1562.68	-8482.02	40.4290315	-104.8639787	0.00
16420.00	90.14	271.34	7138.09	8722.64	1565.02	-8581.99	40.4290378	-104.8643378	0.00
16520.00	90.14	271.34	7137.85	8821.62	1567.36	-8681.96	40.4290441	-104.8646969	0.00
16620.00	90.14	271.34	7137.61	8920.60	1569.70	-8781.94	40.4290505	-104.8650560	0.00
16720.00	90.14	271.34	7137.37	9019.59	1572.04	-8881.91	40.4290568	-104.8654151	0.00
16820.00	90.14	271.34	7137.13	9118.57	1574.38	-8981.88	40.4290631	-104.8657742	0.00
16920.00	90.14	271.34	7136.89	9217.55	1576.72	-9081.85	40.4290694	-104.8661333	0.00
17020.00	90.14	271.34	7136.65	9316.54	1579.06	-9181.83	40.4290758	-104.8664924	0.00
17120.00	90.14	271.34	7136.41	9415.52	1581.40	-9281.80	40.4290821	-104.8668515	0.00
17220.00	90.14	271.34	7136.17	9514.50	1583.74	-9381.77	40.4290884	-104.8672106	0.00
17292.80	90.14	271.34	7136.00	9586.56	1585.44	-9454.55	40.4290930	-104.8674720	0.00



Planned Wellpath Report

GREELEY-ROTHER FEDERAL 32C-2-L PWP (REV-A.0)

Page 1 of 7



REFERENCE WELLPATH IDENTIFICATION

Operator	SRC ENERGY	Slot	SLOT#13 GREELEY-ROTHER FEDERAL 32C-2-L (1163'FSL & 295'FEL, SEC.01)
Area	COLORADO	Well	GREELEY-ROTHER FEDERAL 32C-2-L
Field	WELD COUNTY (NAD83,TRUE NORTH)	Wellbore	GREELEY-ROTHER FEDERAL 32C-2-L PWB
Facility	SEC.01-T05N-R67W		

REPORT SETUP INFORMATION

Projection System	NAD83 / Lambert Colorado SP, Northern Zone (501), US feet	Software System	WellArchitect® 5.0
North Reference	True	User	Doddanna
Scale	0.999961	Report Generated	10/4/2017 at 1:33:31 PM
Convergence at slot	0.43° East	Database/Source file	WellArchitectDB/GREELEY-ROTHER FEDERAL 32C-2-L PWP__REV-A.0_.xml

WELLPATH LOCATION

	Local coordinates		Grid coordinates		Geographic coordinates	
	North[ft]	East[ft]	Easting[US ft]	Northing[US ft]	Latitude	Longitude
Slot Location	-1204.77	-0.23	3185554.32	1398272.67	40°25'29.086"N	104°50'00.643"W
Facility Reference Pt			3185545.50	1399477.36	40°25'40.991"N	104°50'00.640"W
Field Reference Pt			3171284.48	1426358.81	40°30'07.643"N	104°53'02.634"W

WELLPATH DATUM

Calculation method	Minimum curvature	PRECISION 462 (20') (RKB) to Facility Vertical Datum	4891.00ft
Horizontal Reference Pt	Slot	PRECISION 462 (20') (RKB) to Mean Sea Level	4891.00ft
Vertical Reference Pt	PRECISION 462 (20') (RKB)	PRECISION 462 (20') (RKB) to Mud Line at Slot (SLOT#13 GREELEY-ROTHER FEDERAL 32C-2-L (1163'FSL & 295'FEL, SEC.01))	4891.00ft
MD Reference Pt	PRECISION 462 (20') (RKB)	Section Origin	N 0.00, E 0.00 ft
Field Vertical Reference	Mean Sea Level	Section Azimuth	279.52°



Planned Wellpath Report

GREELEY-ROTHE FEDERAL 32C-2-L PWP (REV-A.0)

Page 2 of 7



REFERENCE WELLPATH IDENTIFICATION			
Operator	SRC ENERGY	Slot	SLOT#13 GREELEY-ROTHE FEDERAL 32C-2-L (1163'FSL & 295'FEL, SEC.01)
Area	COLORADO	Well	GREELEY-ROTHE FEDERAL 32C-2-L
Field	WELD COUNTY (NAD83,TRUE NORTH)	Wellbore	GREELEY-ROTHE FEDERAL 32C-2-L PWB
Facility	SEC.01-T05N-R67W		

WELLPATH DATA (179 stations) † = interpolated/extrapolated station								
MD [ft]	Inclination [°]	Azimuth [°]	TVD [ft]	Vert Sect [ft]	North [ft]	East [ft]	DLS [°/100ft]	Comments
0.00†	0.000	32.349	0.00	0.00	0.00	0.00	0.00	
20.00	0.000	32.349	20.00	0.00	0.00	0.00	0.00	Tie On
120.00†	0.000	32.349	120.00	0.00	0.00	0.00	0.00	
200.00	0.000	32.349	200.00	0.00	0.00	0.00	0.00	End of Tangent
220.00†	0.400	32.349	220.00	-0.03	0.06	0.04	2.00	
320.00†	2.400	32.349	319.96	-0.97	2.12	1.34	2.00	
420.00†	4.400	32.349	419.78	-3.28	7.13	4.52	2.00	
520.00†	6.400	32.349	519.33	-6.93	15.08	9.55	2.00	
620.00†	8.400	32.349	618.50	-11.92	25.96	16.44	2.00	
720.00†	10.400	32.349	717.15	-18.26	39.76	25.18	2.00	
820.00†	12.400	32.349	815.17	-25.93	56.46	35.76	2.00	
875.60	13.512	32.349	869.36	-30.77	66.99	42.43	2.00	End of Build
920.00†	13.512	32.349	912.53	-34.79	75.75	47.98	0.00	
1020.00†	13.512	32.349	1009.76	-43.86	95.49	60.48	0.00	
1120.00†	13.512	32.349	1106.99	-52.92	115.23	72.98	0.00	
1220.00†	13.512	32.349	1204.22	-61.99	134.97	85.49	0.00	
1320.00†	13.512	32.349	1301.45	-71.05	154.71	97.99	0.00	
1420.00†	13.512	32.349	1398.69	-80.12	174.45	110.49	0.00	
1520.00†	13.512	32.349	1495.92	-89.18	194.19	122.99	0.00	
1620.00†	13.512	32.349	1593.15	-98.25	213.92	135.49	0.00	
1720.00†	13.512	32.349	1690.38	-107.31	233.66	148.00	0.00	
1820.00†	13.512	32.349	1787.61	-116.38	253.40	160.50	0.00	
1920.00†	13.512	32.349	1884.85	-125.44	273.14	173.00	0.00	
2020.00†	13.512	32.349	1982.08	-134.51	292.88	185.50	0.00	
2120.00†	13.512	32.349	2079.31	-143.58	312.62	198.00	0.00	
2220.00†	13.512	32.349	2176.54	-152.64	332.36	210.51	0.00	
2320.00†	13.512	32.349	2273.78	-161.71	352.10	223.01	0.00	
2420.00†	13.512	32.349	2371.01	-170.77	371.83	235.51	0.00	
2520.00†	13.512	32.349	2468.24	-179.84	391.57	248.01	0.00	
2620.00†	13.512	32.349	2565.47	-188.90	411.31	260.51	0.00	



Planned Wellpath Report

GREELEY-ROTHE FEDERAL 32C-2-L PWP (REV-A.0)

Page 3 of 7



REFERENCE WELLPATH IDENTIFICATION			
Operator	SRC ENERGY	Slot	SLOT#13 GREELEY-ROTHE FEDERAL 32C-2-L (1163'FSL & 295'FEL, SEC.01)
Area	COLORADO	Well	GREELEY-ROTHE FEDERAL 32C-2-L
Field	WELD COUNTY (NAD83,TRUE NORTH)	Wellbore	GREELEY-ROTHE FEDERAL 32C-2-L PWB
Facility	SEC.01-T05N-R67W		

WELLPATH DATA (179 stations) † = interpolated/extrapolated station								
MD [ft]	Inclination [°]	Azimuth [°]	TVD [ft]	Vert Sect [ft]	North [ft]	East [ft]	DLS [°/100ft]	Comments
2720.00†	13.512	32.349	2662.70	-197.97	431.05	273.02	0.00	
2820.00†	13.512	32.349	2759.94	-207.03	450.79	285.52	0.00	
2920.00†	13.512	32.349	2857.17	-216.10	470.53	298.02	0.00	
3020.00†	13.512	32.349	2954.40	-225.16	490.27	310.52	0.00	
3120.00†	13.512	32.349	3051.63	-234.23	510.01	323.02	0.00	
3220.00†	13.512	32.349	3148.86	-243.29	529.74	335.52	0.00	
3320.00†	13.512	32.349	3246.10	-252.36	549.48	348.03	0.00	
3420.00†	13.512	32.349	3343.33	-261.43	569.22	360.53	0.00	
3520.00†	13.512	32.349	3440.56	-270.49	588.96	373.03	0.00	
3620.00†	13.512	32.349	3537.79	-279.56	608.70	385.53	0.00	
3720.00†	13.512	32.349	3635.02	-288.62	628.44	398.03	0.00	
3820.00†	13.512	32.349	3732.26	-297.69	648.18	410.54	0.00	
3920.00†	13.512	32.349	3829.49	-306.75	667.92	423.04	0.00	
4020.00†	13.512	32.349	3926.72	-315.82	687.66	435.54	0.00	
4120.00†	13.512	32.349	4023.95	-324.88	707.39	448.04	0.00	
4220.00†	13.512	32.349	4121.19	-333.95	727.13	460.54	0.00	
4320.00†	13.512	32.349	4218.42	-343.01	746.87	473.05	0.00	
4420.00†	13.512	32.349	4315.65	-352.08	766.61	485.55	0.00	
4520.00†	13.512	32.349	4412.88	-361.14	786.35	498.05	0.00	
4620.00†	13.512	32.349	4510.11	-370.21	806.09	510.55	0.00	
4720.00†	13.512	32.349	4607.35	-379.28	825.83	523.05	0.00	
4820.00†	13.512	32.349	4704.58	-388.34	845.57	535.56	0.00	
4920.00†	13.512	32.349	4801.81	-397.41	865.30	548.06	0.00	
5020.00†	13.512	32.349	4899.04	-406.47	885.04	560.56	0.00	
5120.00†	13.512	32.349	4996.27	-415.54	904.78	573.06	0.00	
5220.00†	13.512	32.349	5093.51	-424.60	924.52	585.56	0.00	
5320.00†	13.512	32.349	5190.74	-433.67	944.26	598.07	0.00	
5420.00†	13.512	32.349	5287.97	-442.73	964.00	610.57	0.00	
5520.00†	13.512	32.349	5385.20	-451.80	983.74	623.07	0.00	
5620.00†	13.512	32.349	5482.43	-460.86	1003.48	635.57	0.00	



Planned Wellpath Report

GREELEY-ROTHE FEDERAL 32C-2-L PWP (REV-A.0)

Page 4 of 7



REFERENCE WELLPATH IDENTIFICATION			
Operator	SRC ENERGY	Slot	SLOT#13 GREELEY-ROTHE FEDERAL 32C-2-L (1163'FSL & 295'FEL, SEC.01)
Area	COLORADO	Well	GREELEY-ROTHE FEDERAL 32C-2-L
Field	WELD COUNTY (NAD83,TRUE NORTH)	Wellbore	GREELEY-ROTHE FEDERAL 32C-2-L PWB
Facility	SEC.01-T05N-R67W		

WELLPATH DATA (179 stations) † = interpolated/extrapolated station								
MD [ft]	Inclination [°]	Azimuth [°]	TVD [ft]	Vert Sect [ft]	North [ft]	East [ft]	DLS [°/100ft]	Comments
5720.00†	13.512	32.349	5579.67	-469.93	1023.22	648.07	0.00	
5820.00†	13.512	32.349	5676.90	-478.99	1042.95	660.58	0.00	
5920.00†	13.512	32.349	5774.13	-488.06	1062.69	673.08	0.00	
6020.00†	13.512	32.349	5871.36	-497.13	1082.43	685.58	0.00	
6120.00†	13.512	32.349	5968.59	-506.19	1102.17	698.08	0.00	
6220.00†	13.512	32.349	6065.83	-515.26	1121.91	710.58	0.00	
6320.00†	13.512	32.349	6163.06	-524.32	1141.65	723.09	0.00	
6420.00†	13.512	32.349	6260.29	-533.39	1161.39	735.59	0.00	
6520.00†	13.512	32.349	6357.52	-542.45	1181.13	748.09	0.00	
6620.00†	13.512	32.349	6454.76	-551.52	1200.86	760.59	0.00	
6625.90	13.512	32.349	6460.49	-552.05	1202.03	761.33	0.00	End of Tangent
6720.00†	11.744	353.674	6552.47	-553.71	1220.87	766.17	9.00	
6820.00†	15.669	318.630	6649.77	-540.42	1241.16	756.10	9.00	
6920.00†	22.647	300.960	6744.25	-511.96	1261.24	730.61	9.00	
7020.00†	30.657	291.708	6833.59	-469.04	1280.61	690.33	9.00	
7120.00†	39.069	286.071	6915.59	-412.69	1298.81	636.25	9.00	
7220.00†	47.668	282.187	6988.23	-344.32	1315.37	569.71	9.00	
7320.00†	56.366	279.247	7049.72	-265.61	1329.89	492.33	9.00	
7420.00†	65.121	276.852	7098.55	-178.49	1342.01	406.03	9.00	
7520.00†	73.909	274.776	7133.52	-85.11	1351.45	312.92	9.00	
7620.00†	82.716	272.878	7153.76	12.23	1357.95	215.31	9.00	
7704.20	90.137	271.341	7159.00 [†]	95.51	1361.04	131.39	9.00	End of 3D Arc
7720.00†	90.137	271.341	7158.96	111.14	1361.41	115.60	0.00	
7820.00†	90.137	271.341	7158.72	210.13	1363.75	15.63	0.00	
7920.00†	90.137	271.341	7158.48	309.11	1366.09	-84.34	0.00	
8020.00†	90.137	271.341	7158.24	408.09	1368.43	-184.32	0.00	
8120.00†	90.137	271.341	7158.00	507.07	1370.77	-284.29	0.00	
8220.00†	90.137	271.341	7157.76	606.06	1373.11	-384.26	0.00	
8320.00†	90.137	271.341	7157.52	705.04	1375.45	-484.23	0.00	
8420.00†	90.137	271.341	7157.28	804.02	1377.79	-584.21	0.00	



Planned Wellpath Report

GREELEY-ROTHE FEDERAL 32C-2-L PWP (REV-A.0)

Page 5 of 7



REFERENCE WELLPATH IDENTIFICATION			
Operator	SRC ENERGY	Slot	SLOT#13 GREELEY-ROTHE FEDERAL 32C-2-L (1163'FSL & 295'FEL, SEC.01)
Area	COLORADO	Well	GREELEY-ROTHE FEDERAL 32C-2-L
Field	WELD COUNTY (NAD83,TRUE NORTH)	Wellbore	GREELEY-ROTHE FEDERAL 32C-2-L PWB
Facility	SEC.01-T05N-R67W		

WELLPATH DATA (179 stations) † = interpolated/extrapolated station								
MD [ft]	Inclination [°]	Azimuth [°]	TVD [ft]	Vert Sect [ft]	North [ft]	East [ft]	DLS [°/100ft]	Comments
8520.00†	90.137	271.341	7157.04	903.00	1380.13	-684.18	0.00	
8620.00†	90.137	271.341	7156.80	1001.99	1382.47	-784.15	0.00	
8720.00†	90.137	271.341	7156.56	1100.97	1384.81	-884.12	0.00	
8820.00†	90.137	271.341	7156.32	1199.95	1387.15	-984.09	0.00	
8920.00†	90.137	271.341	7156.08	1298.94	1389.49	-1084.07	0.00	
9020.00†	90.137	271.341	7155.84	1397.92	1391.83	-1184.04	0.00	
9120.00†	90.137	271.341	7155.60	1496.90	1394.17	-1284.01	0.00	
9220.00†	90.137	271.341	7155.36	1595.88	1396.51	-1383.98	0.00	
9320.00†	90.137	271.341	7155.12	1694.87	1398.85	-1483.96	0.00	
9420.00†	90.137	271.341	7154.88	1793.85	1401.19	-1583.93	0.00	
9520.00†	90.137	271.341	7154.64	1892.83	1403.53	-1683.90	0.00	
9620.00†	90.137	271.341	7154.40	1991.81	1405.87	-1783.87	0.00	
9720.00†	90.137	271.341	7154.16	2090.80	1408.21	-1883.85	0.00	
9820.00†	90.137	271.341	7153.92	2189.78	1410.55	-1983.82	0.00	
9920.00†	90.137	271.341	7153.69	2288.76	1412.89	-2083.79	0.00	
10020.00†	90.137	271.341	7153.45	2387.75	1415.23	-2183.76	0.00	
10120.00†	90.137	271.341	7153.21	2486.73	1417.57	-2283.73	0.00	
10220.00†	90.137	271.341	7152.97	2585.71	1419.91	-2383.71	0.00	
10320.00†	90.137	271.341	7152.73	2684.69	1422.25	-2483.68	0.00	
10420.00†	90.137	271.341	7152.49	2783.68	1424.60	-2583.65	0.00	
10520.00†	90.137	271.341	7152.25	2882.66	1426.94	-2683.62	0.00	
10620.00†	90.137	271.341	7152.01	2981.64	1429.28	-2783.60	0.00	
10720.00†	90.137	271.341	7151.77	3080.62	1431.62	-2883.57	0.00	
10820.00†	90.137	271.341	7151.53	3179.61	1433.96	-2983.54	0.00	
10920.00†	90.137	271.341	7151.29	3278.59	1436.30	-3083.51	0.00	
11020.00†	90.137	271.341	7151.05	3377.57	1438.64	-3183.49	0.00	
11120.00†	90.137	271.341	7150.81	3476.56	1440.98	-3283.46	0.00	
11220.00†	90.137	271.341	7150.57	3575.54	1443.32	-3383.43	0.00	
11320.00†	90.137	271.341	7150.33	3674.52	1445.66	-3483.40	0.00	
11420.00†	90.137	271.341	7150.09	3773.50	1448.00	-3583.38	0.00	



Planned Wellpath Report

GREELEY-ROTHE FEDERAL 32C-2-L PWP (REV-A.0)

Page 6 of 7



REFERENCE WELLPATH IDENTIFICATION			
Operator	SRC ENERGY	Slot	SLOT#13 GREELEY-ROTHE FEDERAL 32C-2-L (1163'FSL & 295'FEL, SEC.01)
Area	COLORADO	Well	GREELEY-ROTHE FEDERAL 32C-2-L
Field	WELD COUNTY (NAD83,TRUE NORTH)	Wellbore	GREELEY-ROTHE FEDERAL 32C-2-L PWB
Facility	SEC.01-T05N-R67W		

WELLPATH DATA (179 stations) † = interpolated/extrapolated station

MD [ft]	Inclination [°]	Azimuth [°]	TVD [ft]	Vert Sect [ft]	North [ft]	East [ft]	DLS [°/100ft]	Comments
11520.00†	90.137	271.341	7149.85	3872.49	1450.34	-3683.35	0.00	
11620.00†	90.137	271.341	7149.61	3971.47	1452.68	-3783.32	0.00	
11720.00†	90.137	271.341	7149.37	4070.45	1455.02	-3883.29	0.00	
11820.00†	90.137	271.341	7149.13	4169.43	1457.36	-3983.26	0.00	
11920.00†	90.137	271.341	7148.89	4268.42	1459.70	-4083.24	0.00	
12020.00†	90.137	271.341	7148.65	4367.40	1462.04	-4183.21	0.00	
12120.00†	90.137	271.341	7148.41	4466.38	1464.38	-4283.18	0.00	
12220.00†	90.137	271.341	7148.17	4565.36	1466.72	-4383.15	0.00	
12320.00†	90.137	271.341	7147.93	4664.35	1469.06	-4483.13	0.00	
12420.00†	90.137	271.341	7147.69	4763.33	1471.40	-4583.10	0.00	
12520.00†	90.137	271.341	7147.45	4862.31	1473.74	-4683.07	0.00	
12620.00†	90.137	271.341	7147.21	4961.30	1476.08	-4783.04	0.00	
12720.00†	90.137	271.341	7146.97	5060.28	1478.42	-4883.02	0.00	
12820.00†	90.137	271.341	7146.73	5159.26	1480.76	-4982.99	0.00	
12920.00†	90.137	271.341	7146.49	5258.24	1483.10	-5082.96	0.00	
13020.00†	90.137	271.341	7146.25	5357.23	1485.44	-5182.93	0.00	
13120.00†	90.137	271.341	7146.01	5456.21	1487.78	-5282.90	0.00	
13220.00†	90.137	271.341	7145.77	5555.19	1490.12	-5382.88	0.00	
13320.00†	90.137	271.341	7145.53	5654.17	1492.47	-5482.85	0.00	
13420.00†	90.137	271.341	7145.29	5753.16	1494.81	-5582.82	0.00	
13520.00†	90.137	271.341	7145.05	5852.14	1497.15	-5682.79	0.00	
13620.00†	90.137	271.341	7144.81	5951.12	1499.49	-5782.77	0.00	
13720.00†	90.137	271.341	7144.57	6050.11	1501.83	-5882.74	0.00	
13820.00†	90.137	271.341	7144.33	6149.09	1504.17	-5982.71	0.00	
13920.00†	90.137	271.341	7144.09	6248.07	1506.51	-6082.68	0.00	
14020.00†	90.137	271.341	7143.85	6347.05	1508.85	-6182.66	0.00	
14120.00†	90.137	271.341	7143.61	6446.04	1511.19	-6282.63	0.00	
14220.00†	90.137	271.341	7143.37	6545.02	1513.53	-6382.60	0.00	
14320.00†	90.137	271.341	7143.13	6644.00	1515.87	-6482.57	0.00	
14420.00†	90.137	271.341	7142.89	6742.98	1518.21	-6582.54	0.00	



Planned Wellpath Report

GREELEY-ROTHE FEDERAL 32C-2-L PWP (REV-A.0)

Page 7 of 7



REFERENCE WELLPATH IDENTIFICATION			
Operator	SRC ENERGY	Slot	SLOT#13 GREELEY-ROTHE FEDERAL 32C-2-L (1163'FSL & 295'FEL, SEC.01)
Area	COLORADO	Well	GREELEY-ROTHE FEDERAL 32C-2-L
Field	WELD COUNTY (NAD83,TRUE NORTH)	Wellbore	GREELEY-ROTHE FEDERAL 32C-2-L PWB
Facility	SEC.01-T05N-R67W		

WELLPATH DATA (179 stations) † = interpolated/extrapolated station								
MD [ft]	Inclination [°]	Azimuth [°]	TVD [ft]	Vert Sect [ft]	North [ft]	East [ft]	DLS [°/100ft]	Comments
14520.00†	90.137	271.341	7142.65	6841.97	1520.55	-6682.52	0.00	
14620.00†	90.137	271.341	7142.41	6940.95	1522.89	-6782.49	0.00	
14720.00†	90.137	271.341	7142.17	7039.93	1525.23	-6882.46	0.00	
14820.00†	90.137	271.341	7141.93	7138.92	1527.57	-6982.43	0.00	
14920.00†	90.137	271.341	7141.69	7237.90	1529.91	-7082.41	0.00	
15020.00†	90.137	271.341	7141.45	7336.88	1532.25	-7182.38	0.00	
15120.00†	90.137	271.341	7141.21	7435.86	1534.59	-7282.35	0.00	
15220.00†	90.137	271.341	7140.97	7534.85	1536.93	-7382.32	0.00	
15320.00†	90.137	271.341	7140.73	7633.83	1539.27	-7482.30	0.00	
15420.00†	90.137	271.341	7140.49	7732.81	1541.61	-7582.27	0.00	
15520.00†	90.137	271.341	7140.25	7831.79	1543.95	-7682.24	0.00	
15620.00†	90.137	271.341	7140.01	7930.78	1546.29	-7782.21	0.00	
15720.00†	90.137	271.341	7139.77	8029.76	1548.63	-7882.18	0.00	
15820.00†	90.137	271.341	7139.53	8128.74	1550.97	-7982.16	0.00	
15920.00†	90.137	271.341	7139.29	8227.73	1553.31	-8082.13	0.00	
16020.00†	90.137	271.341	7139.05	8326.71	1555.65	-8182.10	0.00	
16120.00†	90.137	271.341	7138.81	8425.69	1557.99	-8282.07	0.00	
16220.00†	90.137	271.341	7138.57	8524.67	1560.34	-8382.05	0.00	
16320.00†	90.137	271.341	7138.33	8623.66	1562.68	-8482.02	0.00	
16420.00†	90.137	271.341	7138.09	8722.64	1565.02	-8581.99	0.00	
16520.00†	90.137	271.341	7137.85	8821.62	1567.36	-8681.96	0.00	
16620.00†	90.137	271.341	7137.61	8920.60	1569.70	-8781.94	0.00	
16720.00†	90.137	271.341	7137.37	9019.59	1572.04	-8881.91	0.00	
16820.00†	90.137	271.341	7137.13	9118.57	1574.38	-8981.88	0.00	
16920.00†	90.137	271.341	7136.89	9217.55	1576.72	-9081.85	0.00	
17020.00†	90.137	271.341	7136.65	9316.54	1579.06	-9181.83	0.00	
17120.00†	90.137	271.341	7136.41	9415.52	1581.40	-9281.80	0.00	
17220.00†	90.137	271.341	7136.17	9514.50	1583.74	-9381.77	0.00	
17292.80	90.137	271.341	7136.00 ²	9586.56	1585.44	-9454.55	0.00	End of Tangent

HOLE & CASING SECTIONS									
- Ref Wellbore: GREELEY-ROTHER FEDERAL 32C-2-L PWB Ref Wellpath: GREELEY-ROTHER FEDERAL 32C-2-L PWP (REV-A.0)									
String/Diameter	Start MD [ft]	End MD [ft]	Interval [ft]	Start TVD [ft]	End TVD [ft]	Start N/S [ft]	Start E/W [ft]	End N/S [ft]	End E/W [ft]
13.5in Open Hole	20.00	1750.00	1730.00	20.00	1719.55	0.00	0.00	239.58	151.75
9.625in Casing Surface	20.00	1750.00	1730.00	20.00	1719.55	0.00	0.00	239.58	151.75
8.5in Open Hole	1750.00	17292.80	15542.80	1719.55	7136.00	239.58	151.75	1585.44	-9454.55

TARGETS									
Name	MD [ft]	TVD [ft]	North [ft]	East [ft]	Grid East [US ft]	Grid North [US ft]	Latitude	Longitude	Shape
SEC.01-T05N-R67W		21.00	1204.77	0.23	3185545.50	1399477.36	40°25'40.991"N	104°50'00.640"W	polygon
SEC.02-T05N-R67W		21.00	1204.77	0.23	3185545.50	1399477.36	40°25'40.991"N	104°50'00.640"W	polygon
2) GREEELY ROTH FEDERAL 32C-2-L BHL ON PLAT (2845'FSL & 150'FWL, SEC.02)	17292.80	7136.00	1585.44	-9454.55	3176088.50	1399786.95	40°25'44.735"N	104°52'02.899"W	circle
1) GREELEY ROTH FEDERAL 32C-2-L TOP OF PROD ON PLAT (2519'FSL & 150'FEL, SEC.01)	7704.20	7159.00	1361.04	131.39	3185675.47	1399634.60	40°25'42.535"N	104°49'58.944"W	circle

SURVEY PROGRAM - Ref Wellbore: GREELEY-ROTHER FEDERAL 32C-2-L PWB Ref Wellpath: GREELEY-ROTHER FEDERAL 32C-2-L PWP (REV-A.0)				
Start MD [ft]	End MD [ft]	Positional Uncertainty Model	Log Name/Comment	Wellbore
20.00	1750.00	Custom BHI NaviTrak (IFR1, Standard Rotating+Axial Corr) (Rockies 0.03Gt model)		GREELEY-ROTHER FEDERAL 32C-2-L PWB
1750.00	17292.80	Custom BHI AutoTrak Curve (IFR1, Short) (Rockies 0.03Gt model)		GREELEY-ROTHER FEDERAL 32C-2-L PWB