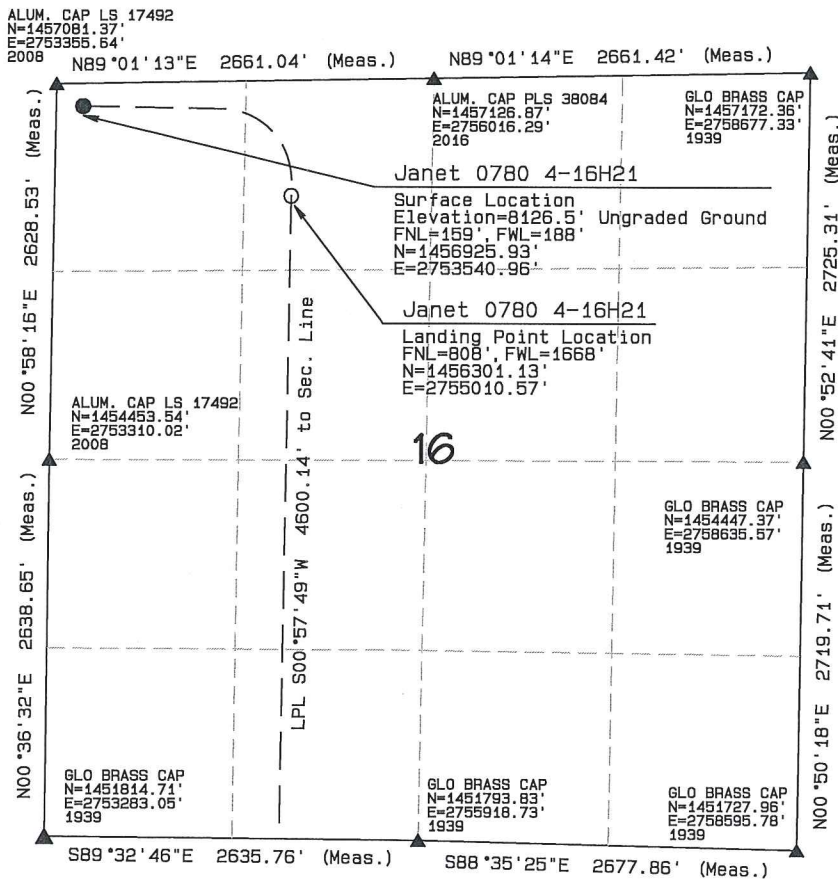


T7N, R80W, 6th P.M.

SandRidge Exploration & Production, LLC



Surface & Landing Point Locations,
Janet 0780 4-16H21 located as shown
in the NW1/4NW1/4 & NE1/4NW1/4
of Section 16, T7N, R80W, 6th P.M.,
Jackson County, Colorado.

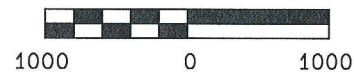
BASIS OF BEARINGS:

US STATE PLANE 1983
CO NORTH 0501 GRID

BASIS OF ELEVATION

NAVD88 Computed using GEOID12B
as measured using a combination of
Static and Kinematic GPS based on
an OPUS Solution Report.

GRAPHIC SCALE 1"=1000'



I, RANDALL R. MILLER, BEING A REGISTERED LAND SURVEYOR IN THE
STATE OF COLORADO, DO HEREBY CERTIFY THAT THIS PLAT WAS
MADE BY ME AND/OR UNDER MY DIRECT SUPERVISION AND THAT
IT IS ACCURATE TO THE BEST OF MY KNOWLEDGE.

DATED THIS _____ DAY OF _____

RANDALL R. MILLER, COLORADO PLS NO. 38084



LEGEND

90° SYMBOL
FOUND CORNER
PROPOSED WELL
PROPOSED BHL/LPL

NAD 83 (SURFACE LOCATION)

LATITUDE= 40.58428°N
LONGITUDE= 106.38735°W PDOP = 1.825

NAD 83 (TARGET BOTTOM HOLE)

LATITUDE= 40.555988°N
LONGITUDE= 106.382272°W

NAD 83 (LANDING POINT LOCATION)

LATITUDE= 40.582601°N
LONGITUDE= 106.382032°W

NORTH PARK ENGINEERING &
CONSULTING, INC.

P.O. BOX 395
WALDEN, CO 80480
(970) 723-3725

DATE OF FIELD WORK: JULY 5, 2017 DRAWING COMPLETION: DEC 14, 2017
SURVEYED BY: RRM DRAWN BY: ADL CHECKED BY: RRM

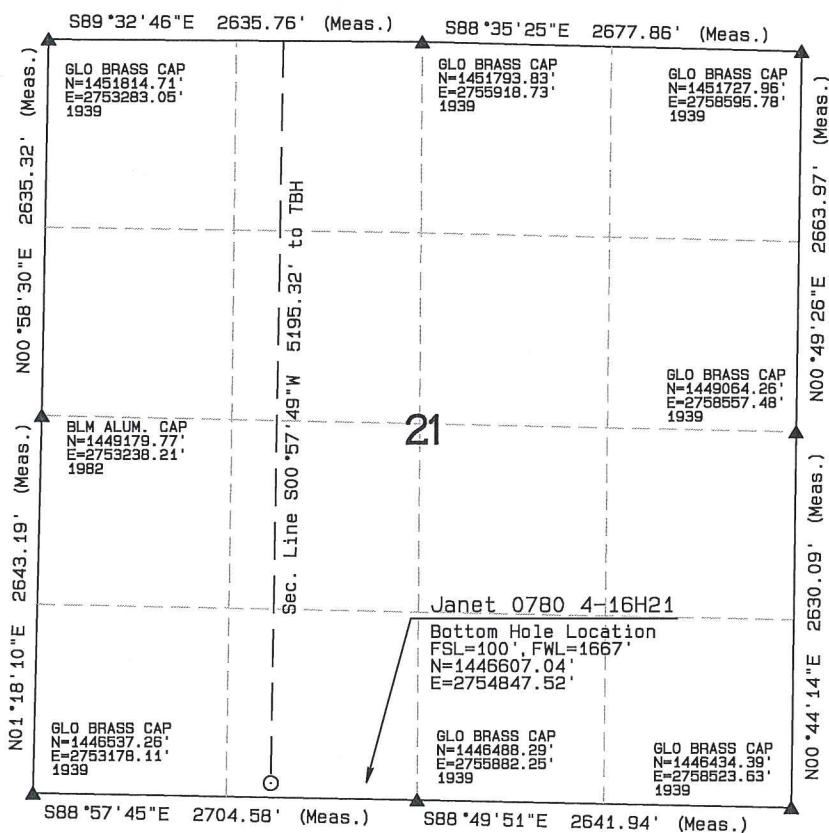
T7N, R80W, 6th P.M.

SandRidge Exploration & Production, LLC

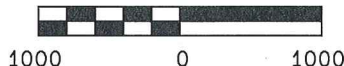
Bottom Hole Location, Janet 0780 4-16H21
as shown in the SE1/4SW1/4 of Section 21, T7N,
R80W, 6th P.M., Jackson County, Colorado.

BASIS OF BEARINGS:
US STATE PLANE 1983
CO NORTH 0501 GRID

BASIS OF ELEVATION
NAVD88 Computed using GEOID12B
as measured using a combination of
Static and Kinematic GPS based on
an OPUS Solution Report.



GRAPHIC SCALE 1"=1000'



I RANDALL R. MILLER, BEING A REGISTERED LAND SURVEYOR IN THE
STATE OF COLORADO, DO HEREBY CERTIFY THAT THIS PLAT WAS
MADE BY ME AND/OR UNDER MY DIRECT SUPERVISION AND THAT
IT IS ACCURATE TO THE BEST OF MY KNOWLEDGE.

DATED THIS _____ DAY OF _____

RANDALL R. MILLER, COLORADO PLS NO. 38084



LEGEND

90° SYMBOL
FOUND CORNER
PROPOSED WELL
PROPOSED BHL/LPL



NAD 83 (SURFACE LOCATION)

LATITUDE= 40.58428°N
LONGITUDE= 106.38735°W PDOP = 1.825

NAD 83 (TARGET BOTTOM HOLE)

LATITUDE= 40.555988°N
LONGITUDE= 106.382272°W

NAD 83 (LANDING POINT LOCATION)

LATITUDE= 40.582601°N
LONGITUDE= 106.382032°W

NORTH PARK ENGINEERING & CONSULTING, INC.

P.O. BOX 395
WALDEN, CO 80480
(970) 723-3725

DATE OF FIELD WORK: JULY 5, 2017 DRAWING COMPLETION: DEC 14, 2017
SURVEYED BY: RRM DRAWN BY: ADL CHECKED BY: RRM