

SRC ENERGY

Location: COLORADO Slot: SLOT#24 GREELEY-ROTH 34C-2-L (943'FSL & 294'FEL, SEC.01)
Field: WELD COUNTY (NAD83,TRUE NORTH) Well: GREELEY-ROTH 34C-2-L
Facility: SEC.01-T05N-R67W Wellbore: GREELEY-ROTH 34C-2-L PWB

Plot reference wellpath is GREELEY-ROTH 34C-2-L PWP (REV-A.1)
Grid System: NAD83 / Lambert Colorado SP, Northern Zone (501), US feet
True vertical depths are referenced to PRECISION 462 (20') (RKB) * = Wellpath was transformed from a different geodetic datum
Measured depths are referenced to PRECISION 462 (20') (RKB) North Reference: True north
PRECISION 462 (20') (RKB) to Mean Sea Level: 4893 feet Scale: True distance
Mean Sea Level to Mud line (At Slot: SLOT#24 GREELEY-ROTH 34C-2-L (943'FSL & 294'FEL, SEC.01)): 0 feet Depths are in feet
Coordinates are in feet referenced to Slot Created by: doddanna on 2017-11-28
Database: WellArchitectDB

Location Information

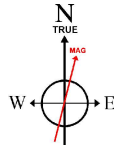
Facility Name				Grid East (US ft)	Grid North (US ft)	Latitude	Longitude
SEC.01-T05N-R67W				3185545.499	1399477.355	40°25'40.991"N	104°50'00.640"W
Slot	Local N (ft)	Local E (ft)		Grid East (US ft)	Grid North (US ft)	Latitude	Longitude
SLOT#24 GREELEY-ROTH 34C-2-L (943'FSL & 294'FEL, SEC.01)	-1424.87	2.55		3185558.760	1399552.601	40°25'26.911"N	104°50'00.607"W
PRECISION 462 (20') (RKB) to Mud line (At Slot: SLOT#24 GREELEY-ROTH 34C-2-L (943'FSL & 294'FEL, SEC.01))						4893R	
Mean Sea Level to Mud line (At Slot: SLOT#24 GREELEY-ROTH 34C-2-L (943'FSL & 294'FEL, SEC.01))						0ft	
PRECISION 462 (20') (RKB) to Mean Sea Level						4893R	

Survey Program

Start MD (ft)	End MD (ft)	Tool	Model	Log Name/Comment	Wellbore
20.00	1750.00	BHI NavTrak	Custom BHI NavTrak (IFR1, Standard Rotating+Axial Corr) (Rockies 0.03Gt model)		GREELEY-ROTH 34C-2-L PWB
1750.00	17388.56	BHI AutoTrack Curve	Custom BHI AutoTrack Curve (IFR1, Short) (Rockies 0.03Gt model)		GREELEY-ROTH 34C-2-L PWB



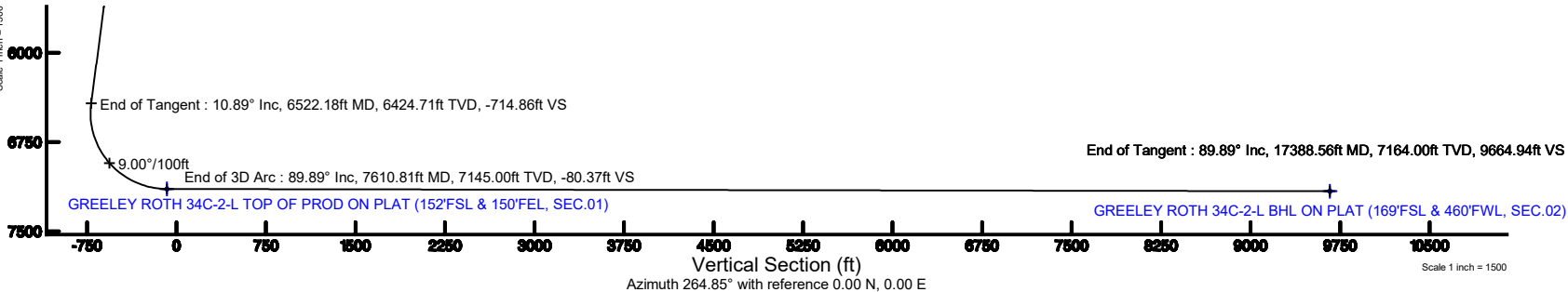
SRC ENERGY



BGGM (1900.0 to 2018.0) Dip: 66.87° Field: 52416.1 nT
Magnetic North is 8.39 degrees East of True North (at 9/22/2017)

To correct azimuth from Magnetic to True add 8.39 degrees

True Vertical Depth (ft)
Scale 1 inch = 1500



Targets

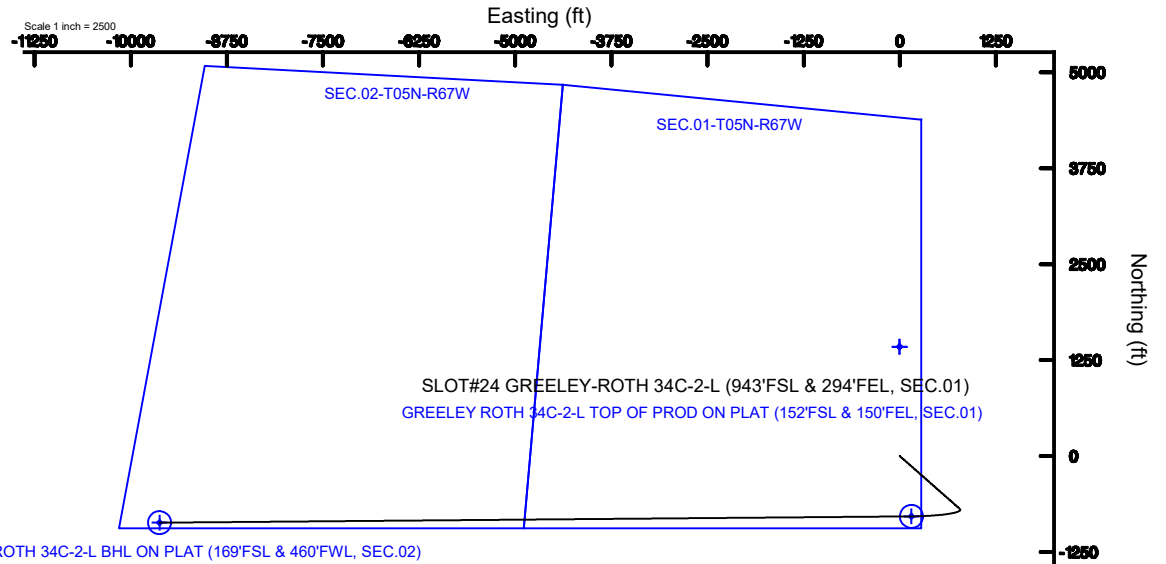
Name	MD (ft)	TVD (ft)	Local N (ft)	Local E (ft)	Grid East (US ft)	Grid North (US ft)	Latitude	Longitude
SEC.01-T05N-R67W		23.00	1424.87	-2.55	3185545.50	1399477.36	40°25'40.991"N	104°50'00.640"W
SEC.02-T05N-R67W		23.00	1424.87	-2.55	3185545.50	1399477.36	40°25'40.991"N	104°50'00.640"W
GREELEY ROTH 34C-2-L TOP OF PROD ON PLAT (152'FSL & 150'FEL, SEC.01)	7610.81	7145.00	-785.10	151.44	3185716.09	1397266.70	40°25'18.153"N	104°49'56.649"W
GREELEY ROTH 34C-2-L BHL ON PLAT (169'FSL & 460'FWL, SEC.02)	17388.56	7164.00	-867.31	-9625.94	3175940.00	1397113.00	40°25'18.322"N	104°52'05.066"W

Hole and Casing Sections

Name	Start MD (ft)	End MD (ft)	Interval (ft)	Start TVD (ft)	End TVD (ft)	Start Local N (ft)	Start Local E (ft)	End Local N (ft)	End Local E (ft)	Wellbore
13.5in Open Hole	20.00	1750.00	1730.00	20.00	1738.52	0.00	0.00	-91.04	103.26	GREELEY-ROTH 34C-2-L PWB
9.625in Casing Surface	20.00	1750.00	1730.00	20.00	1738.52	0.00	0.00	-91.04	103.26	GREELEY-ROTH 34C-2-L PWB
8.5in Open Hole	1750.00	17388.56	15638.56	1738.52	7164.00	-91.04	103.26	-867.31	-9625.94	GREELEY-ROTH 34C-2-L PWB

Well Profile Data

Design Comment	MD (ft)	Inc (°)	Az (°)	TVD (ft)	Local N (ft)	Local E (ft)	DLS (°/100ft)	VS (ft)
Tie On	20.00	0.000	131.402	20.00	0.00	0.00	0.00	0.00
End of Tangent	750.00	0.000	131.402	750.00	0.00	0.00	0.00	0.00
End of Build	1294.64	10.893	131.402	1291.37	-34.14	38.72	2.00	-35.50
End of Tangent	6522.18	10.893	131.402	6424.71	-687.45	779.70	0.00	-714.86
End of 3D Arc	7610.81	89.889	269.518	7145.00	-785.10	151.44	9.00	-80.37
End of Tangent	17388.56	89.889	269.518	7164.00	-867.31	-9625.94	0.00	9664.94



GREELEY-ROTH_34C-2-L_PWP__REV-A.1_.las

~VERSION INFORMATION

VERS. 2.0 : CWLS LOG ASCII STANDARD-VERSION 2.0

WRAP. NO : ASCII DATA SECTION CONTAINS ONE ROW PER WELLPATH STATION

~WELL INFORMATION

#MNEM	.UNITS	DATA	:DESCRIPTION
#----	.-----	----	:-----
STRT	.ft	0.00	:START MD
STOP	.ft	17388.56	:STOP MD
STEP	.ft	0.0	:STEP (non-uniform increment)
NULL	.	-999.99	:NULL
COMP	.	SRC ENERGY	:OPERATOR
WELL	.	GREELEY-ROTH 34C-2-L	:WELL
FLD	.	WELD COUNTY (NAD83,TRUE NORTH)	:FIELD
LOC	.	COLORADO	:AREA (aka: Location)
CNTY	.	N/A	:COUNTY
STAT	.	N/A	:STATE
CTRY	.	N/A	:COUNTRY
SRVC	.	Baker Hughes	:CONTRACTOR
DATE	.	11/27/2017	:LOG REV DATE
API	.		:API NUMBER

~OTHER INFORMATION

#Software: WellArchitect(R) Version 5.0

#MNEM	.UNITS	DATA	:DESCRIPTION
#----	.-----	----	:-----
WPTYPE	.	PLANNED WELLPATH	:WELLPATH TYPE
FACILITY	.	SEC.01-T05N-R67W	:FACILITY
SLOT	.	SLOT#24 GREELEY-ROTH 34C-2-L (943'FSL & 294'FEL, SEC.01)	:SLOT
WELLBORE	.	GREELEY-ROTH 34C-2-L PWB	:WELLBORE
WELLPATH	.	GREELEY-ROTH 34C-2-L PWP (REV-A.1)	:WELLPATH
MDREFPT	.	PRECISION 462 (20') (RKB)	:MD REFERENCE POINT
TVDREFPT	.	PRECISION 462 (20') (RKB)	:TVD REFERENCE POINT
LCLREFPT	.	Slot	:LOCAL COORDINATE
REFERENCE PT			
VSAZIMUTH.deg		264.85	:VERTICAL SECTION
AZIMUTH			
VSORIGN .ft		0.00	:VERTICAL SECTION ORIGIN
NORTH			
VSORIGE .ft		0.00	:VERTICAL SECTION ORIGIN
EAST			

~CURVE (WELLPATH) INFORMATION

#MNEM	.UNITS	:DESCRIPTION
#----	.-----	:-----
DEPT	.ft	:MEASURED DEPTH
INC	.deg	:INCLINATION

GREELEY-ROTH_34C-2-L_PWP__REV-A.1_.las

AZI .deg :AZIMUTH
TVD .ft :TRUE VERTICAL DEPTH
SECT .ft :CROSS SECTION (CURTAIN/VERTICAL)
LOCALN .ft :LOCAL NORTH
LOCALE .ft :LOCAL EAST
LAT .deg :LATITUDE
LONG .deg :LONGITUDE
DLS .deg/100ft :DOGLEG SEVERITY

~ASCII DATA

0.00	0.00	131.40	0.00	0.00	0.00	0.00	40.4241419
-104.8335019	0.00						
20.00	0.00	131.40	20.00	0.00	0.00	0.00	40.4241419
-104.8335019	0.00						
120.00	0.00	131.40	120.00	0.00	0.00	0.00	40.4241419
-104.8335019	0.00						
220.00	0.00	131.40	220.00	0.00	0.00	0.00	40.4241419
-104.8335019	0.00						
320.00	0.00	131.40	320.00	0.00	0.00	0.00	40.4241419
-104.8335019	0.00						
420.00	0.00	131.40	420.00	0.00	0.00	0.00	40.4241419
-104.8335019	0.00						
520.00	0.00	131.40	520.00	0.00	0.00	0.00	40.4241419
-104.8335019	0.00						
620.00	0.00	131.40	620.00	0.00	0.00	0.00	40.4241419
-104.8335019	0.00						
720.00	0.00	131.40	720.00	0.00	0.00	0.00	40.4241419
-104.8335019	0.00						
750.00	0.00	131.40	750.00	0.00	0.00	0.00	40.4241419
-104.8335019	0.00						
820.00	1.40	131.40	819.99	-0.59	-0.57	0.64	40.4241404
-104.8334996	2.00						
920.00	3.40	131.40	919.90	-3.47	-3.33	3.78	40.4241328
-104.8334884	2.00						
1020.00	5.40	131.40	1019.60	-8.74	-8.41	9.54	40.4241189
-104.8334677	2.00						
1120.00	7.40	131.40	1118.97	-16.41	-15.78	17.90	40.4240986
-104.8334377	2.00						
1220.00	9.40	131.40	1217.89	-26.45	-25.44	28.85	40.4240721
-104.8333983	2.00						
1294.64	10.89	131.40	1291.37	-35.50	-34.14	38.72	40.4240482
-104.8333629	2.00						
1320.00	10.89	131.40	1316.27	-38.79	-37.31	42.31	40.4240395
-104.8333500	0.00						
1420.00	10.89	131.40	1414.47	-51.79	-49.80	56.49	40.4240052
-104.8332991	0.00						
1520.00	10.89	131.40	1512.66	-64.78	-62.30	70.66	40.4239709
-104.8332482	0.00						

GREELEY-ROTH_34C-2-L_PWP__REV-A.1_.las

1620.00	10.89	131.40	1610.86	-77.78	-74.80	84.84	40.4239366
-104.8331972	0.00						
1720.00	10.89	131.40	1709.06	-90.78	-87.30	99.01	40.4239023
-104.8331463	0.00						
1820.00	10.89	131.40	1807.26	-103.77	-99.79	113.18	40.4238680
-104.8330954	0.00						
1920.00	10.89	131.40	1905.46	-116.77	-112.29	127.36	40.4238337
-104.8330445	0.00						
2020.00	10.89	131.40	2003.66	-129.76	-124.79	141.53	40.4237994
-104.8329936	0.00						
2120.00	10.89	131.40	2101.85	-142.76	-137.29	155.71	40.4237651
-104.8329427	0.00						
2220.00	10.89	131.40	2200.05	-155.76	-149.78	169.88	40.4237308
-104.8328918	0.00						
2320.00	10.89	131.40	2298.25	-168.75	-162.28	184.06	40.4236965
-104.8328409	0.00						
2420.00	10.89	131.40	2396.45	-181.75	-174.78	198.23	40.4236622
-104.8327900	0.00						
2520.00	10.89	131.40	2494.65	-194.74	-187.28	212.41	40.4236279
-104.8327391	0.00						
2620.00	10.89	131.40	2592.85	-207.74	-199.77	226.58	40.4235936
-104.8326881	0.00						
2720.00	10.89	131.40	2691.04	-220.74	-212.27	240.76	40.4235593
-104.8326372	0.00						
2820.00	10.89	131.40	2789.24	-233.73	-224.77	254.93	40.4235250
-104.8325863	0.00						
2920.00	10.89	131.40	2887.44	-246.73	-237.27	269.10	40.4234907
-104.8325354	0.00						
3020.00	10.89	131.40	2985.64	-259.72	-249.76	283.28	40.4234564
-104.8324845	0.00						
3120.00	10.89	131.40	3083.84	-272.72	-262.26	297.45	40.4234221
-104.8324336	0.00						
3220.00	10.89	131.40	3182.03	-285.71	-274.76	311.63	40.4233878
-104.8323827	0.00						
3320.00	10.89	131.40	3280.23	-298.71	-287.26	325.80	40.4233535
-104.8323318	0.00						
3420.00	10.89	131.40	3378.43	-311.71	-299.75	339.98	40.4233191
-104.8322809	0.00						
3520.00	10.89	131.40	3476.63	-324.70	-312.25	354.15	40.4232848
-104.8322300	0.00						
3620.00	10.89	131.40	3574.83	-337.70	-324.75	368.33	40.4232505
-104.8321791	0.00						
3720.00	10.89	131.40	3673.03	-350.69	-337.25	382.50	40.4232162
-104.8321281	0.00						
3820.00	10.89	131.40	3771.22	-363.69	-349.74	396.68	40.4231819
-104.8320772	0.00						
3920.00	10.89	131.40	3869.42	-376.69	-362.24	410.85	40.4231476
-104.8320263	0.00						

GREELEY-ROTH_34C-2-L_PWP__REV-A.1_.las

4020.00	10.89	131.40	3967.62	-389.68	-374.74	425.02	40.4231133
-104.8319754	0.00						
4120.00	10.89	131.40	4065.82	-402.68	-387.24	439.20	40.4230790
-104.8319245	0.00						
4220.00	10.89	131.40	4164.02	-415.67	-399.73	453.37	40.4230447
-104.8318736	0.00						
4320.00	10.89	131.40	4262.22	-428.67	-412.23	467.55	40.4230104
-104.8318227	0.00						
4420.00	10.89	131.40	4360.41	-441.67	-424.73	481.72	40.4229761
-104.8317718	0.00						
4520.00	10.89	131.40	4458.61	-454.66	-437.23	495.90	40.4229418
-104.8317209	0.00						
4620.00	10.89	131.40	4556.81	-467.66	-449.72	510.07	40.4229075
-104.8316700	0.00						
4720.00	10.89	131.40	4655.01	-480.65	-462.22	524.25	40.4228732
-104.8316191	0.00						
4820.00	10.89	131.40	4753.21	-493.65	-474.72	538.42	40.4228389
-104.8315682	0.00						
4920.00	10.89	131.40	4851.40	-506.64	-487.22	552.60	40.4228046
-104.8315172	0.00						
5020.00	10.89	131.40	4949.60	-519.64	-499.72	566.77	40.4227703
-104.8314663	0.00						
5120.00	10.89	131.40	5047.80	-532.64	-512.21	580.95	40.4227360
-104.8314154	0.00						
5220.00	10.89	131.40	5146.00	-545.63	-524.71	595.12	40.4227017
-104.8313645	0.00						
5320.00	10.89	131.40	5244.20	-558.63	-537.21	609.29	40.4226673
-104.8313136	0.00						
5420.00	10.89	131.40	5342.40	-571.62	-549.71	623.47	40.4226330
-104.8312627	0.00						
5520.00	10.89	131.40	5440.59	-584.62	-562.20	637.64	40.4225987
-104.8312118	0.00						
5620.00	10.89	131.40	5538.79	-597.62	-574.70	651.82	40.4225644
-104.8311609	0.00						
5720.00	10.89	131.40	5636.99	-610.61	-587.20	665.99	40.4225301
-104.8311100	0.00						
5820.00	10.89	131.40	5735.19	-623.61	-599.70	680.17	40.4224958
-104.8310591	0.00						
5920.00	10.89	131.40	5833.39	-636.60	-612.19	694.34	40.4224615
-104.8310082	0.00						
6020.00	10.89	131.40	5931.58	-649.60	-624.69	708.52	40.4224272
-104.8309573	0.00						
6120.00	10.89	131.40	6029.78	-662.59	-637.19	722.69	40.4223929
-104.8309063	0.00						
6220.00	10.89	131.40	6127.98	-675.59	-649.69	736.87	40.4223586
-104.8308554	0.00						
6320.00	10.89	131.40	6226.18	-688.59	-662.18	751.04	40.4223243
-104.8308045	0.00						

GREELEY-ROTH_34C-2-L_PWP__REV-A.1_.las

6420.00	10.89	131.40	6324.38	-701.58	-674.68	765.21	40.4222900
-104.8307536	0.00						
6520.00	10.89	131.40	6422.58	-714.58	-687.18	779.39	40.4222557
-104.8307027	0.00						
6522.18	10.89	131.40	6424.71	-714.86	-687.45	779.70	40.4222549
-104.8307016	0.00						
6620.00	7.35	185.12	6521.44	-720.11	-699.82	786.08	40.4222210
-104.8306787	9.00						
6720.00	12.14	232.88	6620.12	-710.03	-712.57	777.11	40.4221860
-104.8307109	9.00						
6820.00	20.05	248.92	6716.17	-684.57	-725.11	752.68	40.4221516
-104.8307987	9.00						
6920.00	28.59	255.90	6807.23	-644.37	-737.12	713.40	40.4221186
-104.8309397	9.00						
7020.00	37.34	259.84	6891.06	-590.42	-748.33	660.23	40.4220878
-104.8311307	9.00						
7120.00	46.17	262.45	6965.59	-524.04	-758.44	594.49	40.4220601
-104.8313668	9.00						
7220.00	55.04	264.38	7029.00	-446.86	-767.21	517.80	40.4220360
-104.8316422	9.00						
7320.00	63.95	265.93	7079.71	-360.80	-774.42	432.03	40.4220162
-104.8319503	9.00						
7420.00	72.86	267.26	7116.48	-267.96	-779.90	339.31	40.4220012
-104.8322833	9.00						
7520.00	81.78	268.47	7138.41	-170.63	-783.51	241.92	40.4219913
-104.8326331	9.00						
7610.81	89.89	269.52	7145.00	-80.37	-785.10	151.44	40.4219869
-104.8329581	9.00						
7620.00	89.89	269.52	7145.02	-71.21	-785.17	142.25	40.4219867
-104.8329911	0.00						
7720.00	89.89	269.52	7145.21	28.45	-786.01	42.25	40.4219844
-104.8333502	0.00						
7820.00	89.89	269.52	7145.41	128.12	-786.85	-57.74	40.4219821
-104.8337093	0.00						
7920.00	89.89	269.52	7145.60	227.79	-787.70	-157.74	40.4219798
-104.8340685	0.00						
8020.00	89.89	269.52	7145.80	327.46	-788.54	-257.74	40.4219775
-104.8344276	0.00						
8120.00	89.89	269.52	7145.99	427.13	-789.38	-357.73	40.4219752
-104.8347868	0.00						
8220.00	89.89	269.52	7146.18	526.79	-790.22	-457.73	40.4219729
-104.8351459	0.00						
8320.00	89.89	269.52	7146.38	626.46	-791.06	-557.73	40.4219706
-104.8355050	0.00						
8420.00	89.89	269.52	7146.57	726.13	-791.90	-657.72	40.4219682
-104.8358642	0.00						
8520.00	89.89	269.52	7146.77	825.80	-792.74	-757.72	40.4219659
-104.8362233	0.00						

GREELEY-ROTH_34C-2-L_PWP__REV-A.1_.las

8620.00	89.89	269.52	7146.96	925.47	-793.58	-857.71	40.4219636
-104.8365825	0.00						
8720.00	89.89	269.52	7147.16	1025.14	-794.42	-957.71	40.4219613
-104.8369416	0.00						
8820.00	89.89	269.52	7147.35	1124.80	-795.26	-1057.71	40.4219590
-104.8373007	0.00						
8920.00	89.89	269.52	7147.54	1224.47	-796.10	-1157.70	40.4219567
-104.8376599	0.00						
9020.00	89.89	269.52	7147.74	1324.14	-796.94	-1257.70	40.4219543
-104.8380190	0.00						
9120.00	89.89	269.52	7147.93	1423.81	-797.79	-1357.70	40.4219520
-104.8383782	0.00						
9220.00	89.89	269.52	7148.13	1523.48	-798.63	-1457.69	40.4219497
-104.8387373	0.00						
9320.00	89.89	269.52	7148.32	1623.15	-799.47	-1557.69	40.4219474
-104.8390965	0.00						
9420.00	89.89	269.52	7148.52	1722.81	-800.31	-1657.68	40.4219450
-104.8394556	0.00						
9520.00	89.89	269.52	7148.71	1822.48	-801.15	-1757.68	40.4219427
-104.8398147	0.00						
9620.00	89.89	269.52	7148.90	1922.15	-801.99	-1857.68	40.4219404
-104.8401739	0.00						
9720.00	89.89	269.52	7149.10	2021.82	-802.83	-1957.67	40.4219380
-104.8405330	0.00						
9820.00	89.89	269.52	7149.29	2121.49	-803.67	-2057.67	40.4219357
-104.8408922	0.00						
9920.00	89.89	269.52	7149.49	2221.16	-804.51	-2157.67	40.4219334
-104.8412513	0.00						
10020.00	89.89	269.52	7149.68	2320.82	-805.35	-2257.66	40.4219311
-104.8416104	0.00						
10120.00	89.89	269.52	7149.88	2420.49	-806.19	-2357.66	40.4219287
-104.8419696	0.00						
10220.00	89.89	269.52	7150.07	2520.16	-807.04	-2457.65	40.4219264
-104.8423287	0.00						
10320.00	89.89	269.52	7150.26	2619.83	-807.88	-2557.65	40.4219241
-104.8426879	0.00						
10420.00	89.89	269.52	7150.46	2719.50	-808.72	-2657.65	40.4219217
-104.8430470	0.00						
10520.00	89.89	269.52	7150.65	2819.17	-809.56	-2757.64	40.4219194
-104.8434061	0.00						
10620.00	89.89	269.52	7150.85	2918.83	-810.40	-2857.64	40.4219170
-104.8437653	0.00						
10720.00	89.89	269.52	7151.04	3018.50	-811.24	-2957.64	40.4219147
-104.8441244	0.00						
10820.00	89.89	269.52	7151.24	3118.17	-812.08	-3057.63	40.4219124
-104.8444836	0.00						
10920.00	89.89	269.52	7151.43	3217.84	-812.92	-3157.63	40.4219100
-104.8448427	0.00						

GREELEY-ROTH_34C-2-L_PWP__REV-A.1_.las

11020.00	89.89	269.52	7151.62	3317.51	-813.76	-3257.62	40.4219077
-104.8452019	0.00						
11120.00	89.89	269.52	7151.82	3417.18	-814.60	-3357.62	40.4219053
-104.8455610	0.00						
11220.00	89.89	269.52	7152.01	3516.84	-815.44	-3457.62	40.4219030
-104.8459201	0.00						
11320.00	89.89	269.52	7152.21	3616.51	-816.29	-3557.61	40.4219006
-104.8462793	0.00						
11420.00	89.89	269.52	7152.40	3716.18	-817.13	-3657.61	40.4218983
-104.8466384	0.00						
11520.00	89.89	269.52	7152.60	3815.85	-817.97	-3757.61	40.4218959
-104.8469976	0.00						
11620.00	89.89	269.52	7152.79	3915.52	-818.81	-3857.60	40.4218936
-104.8473567	0.00						
11720.00	89.89	269.52	7152.98	4015.18	-819.65	-3957.60	40.4218912
-104.8477158	0.00						
11820.00	89.89	269.52	7153.18	4114.85	-820.49	-4057.59	40.4218889
-104.8480750	0.00						
11920.00	89.89	269.52	7153.37	4214.52	-821.33	-4157.59	40.4218865
-104.8484341	0.00						
12020.00	89.89	269.52	7153.57	4314.19	-822.17	-4257.59	40.4218842
-104.8487933	0.00						
12120.00	89.89	269.52	7153.76	4413.86	-823.01	-4357.58	40.4218818
-104.8491524	0.00						
12220.00	89.89	269.52	7153.96	4513.53	-823.85	-4457.58	40.4218795
-104.8495115	0.00						
12320.00	89.89	269.52	7154.15	4613.19	-824.69	-4557.58	40.4218771
-104.8498707	0.00						
12420.00	89.89	269.52	7154.35	4712.86	-825.54	-4657.57	40.4218747
-104.8502298	0.00						
12520.00	89.89	269.52	7154.54	4812.53	-826.38	-4757.57	40.4218724
-104.8505890	0.00						
12620.00	89.89	269.52	7154.73	4912.20	-827.22	-4857.56	40.4218700
-104.8509481	0.00						
12720.00	89.89	269.52	7154.93	5011.87	-828.06	-4957.56	40.4218677
-104.8513072	0.00						
12820.00	89.89	269.52	7155.12	5111.54	-828.90	-5057.56	40.4218653
-104.8516664	0.00						
12920.00	89.89	269.52	7155.32	5211.20	-829.74	-5157.55	40.4218629
-104.8520255	0.00						
13020.00	89.89	269.52	7155.51	5310.87	-830.58	-5257.55	40.4218606
-104.8523847	0.00						
13120.00	89.89	269.52	7155.71	5410.54	-831.42	-5357.55	40.4218582
-104.8527438	0.00						
13220.00	89.89	269.52	7155.90	5510.21	-832.26	-5457.54	40.4218558
-104.8531029	0.00						
13320.00	89.89	269.52	7156.09	5609.88	-833.10	-5557.54	40.4218535
-104.8534621	0.00						

GREELEY-ROTH_34C-2-L_PWP__REV-A.1_.las

13420.00	89.89	269.52	7156.29	5709.55	-833.94	-5657.54	40.4218511
-104.8538212	0.00						
13520.00	89.89	269.52	7156.48	5809.21	-834.78	-5757.53	40.4218487
-104.8541804	0.00						
13620.00	89.89	269.52	7156.68	5908.88	-835.63	-5857.53	40.4218463
-104.8545395	0.00						
13720.00	89.89	269.52	7156.87	6008.55	-836.47	-5957.52	40.4218440
-104.8548986	0.00						
13820.00	89.89	269.52	7157.07	6108.22	-837.31	-6057.52	40.4218416
-104.8552578	0.00						
13920.00	89.89	269.52	7157.26	6207.89	-838.15	-6157.52	40.4218392
-104.8556169	0.00						
14020.00	89.89	269.52	7157.45	6307.56	-838.99	-6257.51	40.4218368
-104.8559761	0.00						
14120.00	89.89	269.52	7157.65	6407.22	-839.83	-6357.51	40.4218345
-104.8563352	0.00						
14220.00	89.89	269.52	7157.84	6506.89	-840.67	-6457.51	40.4218321
-104.8566943	0.00						
14320.00	89.89	269.52	7158.04	6606.56	-841.51	-6557.50	40.4218297
-104.8570535	0.00						
14420.00	89.89	269.52	7158.23	6706.23	-842.35	-6657.50	40.4218273
-104.8574126	0.00						
14520.00	89.89	269.52	7158.43	6805.90	-843.19	-6757.49	40.4218249
-104.8577718	0.00						
14620.00	89.89	269.52	7158.62	6905.57	-844.03	-6857.49	40.4218225
-104.8581309	0.00						
14720.00	89.89	269.52	7158.81	7005.23	-844.88	-6957.49	40.4218202
-104.8584900	0.00						
14820.00	89.89	269.52	7159.01	7104.90	-845.72	-7057.48	40.4218178
-104.8588492	0.00						
14920.00	89.89	269.52	7159.20	7204.57	-846.56	-7157.48	40.4218154
-104.8592083	0.00						
15020.00	89.89	269.52	7159.40	7304.24	-847.40	-7257.48	40.4218130
-104.8595675	0.00						
15120.00	89.89	269.52	7159.59	7403.91	-848.24	-7357.47	40.4218106
-104.8599266	0.00						
15220.00	89.89	269.52	7159.79	7503.58	-849.08	-7457.47	40.4218082
-104.8602857	0.00						
15320.00	89.89	269.52	7159.98	7603.24	-849.92	-7557.46	40.4218058
-104.8606449	0.00						
15420.00	89.89	269.52	7160.17	7702.91	-850.76	-7657.46	40.4218034
-104.8610040	0.00						
15520.00	89.89	269.52	7160.37	7802.58	-851.60	-7757.46	40.4218010
-104.8613632	0.00						
15620.00	89.89	269.52	7160.56	7902.25	-852.44	-7857.45	40.4217987
-104.8617223	0.00						
15720.00	89.89	269.52	7160.76	8001.92	-853.28	-7957.45	40.4217963
-104.8620814	0.00						

GREELEY-ROTH_34C-2-L_PWP__REV-A.1_.las

15820.00	89.89	269.52	7160.95	8101.58	-854.13	-8057.45	40.4217939
-104.8624406	0.00						
15920.00	89.89	269.52	7161.15	8201.25	-854.97	-8157.44	40.4217915
-104.8627997	0.00						
16020.00	89.89	269.52	7161.34	8300.92	-855.81	-8257.44	40.4217891
-104.8631589	0.00						
16120.00	89.89	269.52	7161.53	8400.59	-856.65	-8357.43	40.4217867
-104.8635180	0.00						
16220.00	89.89	269.52	7161.73	8500.26	-857.49	-8457.43	40.4217843
-104.8638771	0.00						
16320.00	89.89	269.52	7161.92	8599.93	-858.33	-8557.43	40.4217819
-104.8642363	0.00						
16420.00	89.89	269.52	7162.12	8699.59	-859.17	-8657.42	40.4217795
-104.8645954	0.00						
16520.00	89.89	269.52	7162.31	8799.26	-860.01	-8757.42	40.4217770
-104.8649546	0.00						
16620.00	89.89	269.52	7162.51	8898.93	-860.85	-8857.42	40.4217746
-104.8653137	0.00						
16720.00	89.89	269.52	7162.70	8998.60	-861.69	-8957.41	40.4217722
-104.8656728	0.00						
16820.00	89.89	269.52	7162.90	9098.27	-862.53	-9057.41	40.4217698
-104.8660320	0.00						
16920.00	89.89	269.52	7163.09	9197.94	-863.37	-9157.40	40.4217674
-104.8663911	0.00						
17020.00	89.89	269.52	7163.28	9297.60	-864.22	-9257.40	40.4217650
-104.8667503	0.00						
17120.00	89.89	269.52	7163.48	9397.27	-865.06	-9357.40	40.4217626
-104.8671094	0.00						
17220.00	89.89	269.52	7163.67	9496.94	-865.90	-9457.39	40.4217602
-104.8674685	0.00						
17320.00	89.89	269.52	7163.87	9596.61	-866.74	-9557.39	40.4217578
-104.8678277	0.00						
17388.56	89.89	269.52	7164.00	9664.94	-867.31	-9625.94	40.4217561
-104.8680739	0.00						



SRC ENERGY

Planned Wellpath Report

GREELEY-ROTH 34C-2-L PWP (REV-A.1)

Page 1 of 7

**BAKER
HUGHES**

REFERENCE WELLPATH IDENTIFICATION

Operator	SRC ENERGY	Slot	SLOT#24 GREELEY-ROTH 34C-2-L (943'FSL & 294'FEL, SEC.01)
Area	COLORADO	Well	GREELEY-ROTH 34C-2-L
Field	WELD COUNTY (NAD83, TRUE NORTH)	Wellbore	GREELEY-ROTH 34C-2-L PWB
Facility	SEC.01-T05N-R67W		

REPORT SETUP INFORMATION

Projection System	NAD83 / Lambert Colorado SP, Northern Zone (501), US feet	Software System	WellArchitect® 5.0
North Reference	True	User	Doddanna
Scale	0.999961	Report Generated	11/28/2017 at 9:49:26 AM
Convergence at slot	0.43° East	Database/Source file	WellArchitectDB/GREELEY-ROTH_34C-2-L_PWP_REV-A.1_.xml

WELLPATH LOCATION

	Local coordinates		Grid coordinates		Geographic coordinates	
	North[ft]	East[ft]	Easting[US ft]	Northing[US ft]	Latitude	Longitude
Slot Location	-1424.87	2.55	3185558.76	1398052.60	40°25'26.911"N	104°50'00.607"W
Facility Reference Pt			3185545.50	1399477.36	40°25'40.991"N	104°50'00.640"W
Field Reference Pt			3171284.48	1426358.81	40°30'07.643"N	104°53'02.634"W

WELLPATH DATUM

Calculation method	Minimum curvature	PRECISION 462 (20') (RKB) to Facility Vertical Datum	4893.00ft
Horizontal Reference Pt	Slot	PRECISION 462 (20') (RKB) to Mean Sea Level	4893.00ft
Vertical Reference Pt	PRECISION 462 (20') (RKB)	PRECISION 462 (20') (RKB) to Mud Line at Slot (SLOT#24 GREELEY-ROTH 34C-2-L (943'FSL & 294'FEL, SEC.01))	4893.00ft
MD Reference Pt	PRECISION 462 (20') (RKB)	Section Origin	N 0.00, E 0.00 ft
Field Vertical Reference	Mean Sea Level	Section Azimuth	264.85°



SRC ENERGY

Planned Wellpath Report

GREELEY-ROTH 34C-2-L PWP (REV-A.1)

Page 2 of 7

**BAKER
HUGHES****REFERENCE WELLPATH IDENTIFICATION**

Operator	SRC ENERGY	Slot	SLOT#24 GREELEY-ROTH 34C-2-L (943'FSL & 294'FEL, SEC.01)
Area	COLORADO	Well	GREELEY-ROTH 34C-2-L
Field	WELD COUNTY (NAD83, TRUE NORTH)	Wellbore	GREELEY-ROTH 34C-2-L PWB
Facility	SEC.01-T05N-R67W		

WELLPATH DATA (180 stations) † = interpolated/extrapolated station

MD [ft]	Inclination [°]	Azimuth [°]	TVD [ft]	Vert Sect [ft]	North [ft]	East [ft]	DLS [°/100ft]	Comments
0.00†	0.000	131.402	0.00	0.00	0.00	0.00	0.00	
20.00	0.000	131.402	20.00	0.00	0.00	0.00	0.00	Tie On
120.00†	0.000	131.402	120.00	0.00	0.00	0.00	0.00	
220.00†	0.000	131.402	220.00	0.00	0.00	0.00	0.00	
320.00†	0.000	131.402	320.00	0.00	0.00	0.00	0.00	
420.00†	0.000	131.402	420.00	0.00	0.00	0.00	0.00	
520.00†	0.000	131.402	520.00	0.00	0.00	0.00	0.00	
620.00†	0.000	131.402	620.00	0.00	0.00	0.00	0.00	
720.00†	0.000	131.402	720.00	0.00	0.00	0.00	0.00	
750.00	0.000	131.402	750.00	0.00	0.00	0.00	0.00	End of Tangent
820.00†	1.400	131.402	819.99	-0.59	-0.57	0.64	2.00	
920.00†	3.400	131.402	919.90	-3.47	-3.33	3.78	2.00	
1020.00†	5.400	131.402	1019.60	-8.74	-8.41	9.54	2.00	
1120.00†	7.400	131.402	1118.97	-16.41	-15.78	17.90	2.00	
1220.00†	9.400	131.402	1217.89	-26.45	-25.44	28.85	2.00	
1294.64	10.893	131.402	1291.37	-35.50	-34.14	38.72	2.00	End of Build
1320.00†	10.893	131.402	1316.27	-38.79	-37.31	42.31	0.00	
1420.00†	10.893	131.402	1414.47	-51.79	-49.80	56.49	0.00	
1520.00†	10.893	131.402	1512.66	-64.78	-62.30	70.66	0.00	
1620.00†	10.893	131.402	1610.86	-77.78	-74.80	84.84	0.00	
1720.00†	10.893	131.402	1709.06	-90.78	-87.30	99.01	0.00	
1820.00†	10.893	131.402	1807.26	-103.77	-99.79	113.18	0.00	
1920.00†	10.893	131.402	1905.46	-116.77	-112.29	127.36	0.00	
2020.00†	10.893	131.402	2003.66	-129.76	-124.79	141.53	0.00	
2120.00†	10.893	131.402	2101.85	-142.76	-137.29	155.71	0.00	
2220.00†	10.893	131.402	2200.05	-155.76	-149.78	169.88	0.00	
2320.00†	10.893	131.402	2298.25	-168.75	-162.28	184.06	0.00	
2420.00†	10.893	131.402	2396.45	-181.75	-174.78	198.23	0.00	
2520.00†	10.893	131.402	2494.65	-194.74	-187.28	212.41	0.00	
2620.00†	10.893	131.402	2592.85	-207.74	-199.77	226.58	0.00	



SRC ENERGY

Planned Wellpath Report

GREELEY-ROTH 34C-2-L PWP (REV-A.1)

Page 3 of 7

**BAKER
HUGHES****REFERENCE WELLPATH IDENTIFICATION**

Operator	SRC ENERGY	Slot	SLOT#24 GREELEY-ROTH 34C-2-L (943'FSL & 294'FEL, SEC.01)
Area	COLORADO	Well	GREELEY-ROTH 34C-2-L
Field	WELD COUNTY (NAD83, TRUE NORTH)	Wellbore	GREELEY-ROTH 34C-2-L PWB
Facility	SEC.01-T05N-R67W		

WELLPATH DATA (180 stations) † = interpolated/extrapolated station

MD [ft]	Inclination [°]	Azimuth [°]	TVD [ft]	Vert Sect [ft]	North [ft]	East [ft]	DLS [°/100ft]	Comments
2720.00†	10.893	131.402	2691.04	-220.74	-212.27	240.76	0.00	
2820.00†	10.893	131.402	2789.24	-233.73	-224.77	254.93	0.00	
2920.00†	10.893	131.402	2887.44	-246.73	-237.27	269.10	0.00	
3020.00†	10.893	131.402	2985.64	-259.72	-249.76	283.28	0.00	
3120.00†	10.893	131.402	3083.84	-272.72	-262.26	297.45	0.00	
3220.00†	10.893	131.402	3182.03	-285.71	-274.76	311.63	0.00	
3320.00†	10.893	131.402	3280.23	-298.71	-287.26	325.80	0.00	
3420.00†	10.893	131.402	3378.43	-311.71	-299.75	339.98	0.00	
3520.00†	10.893	131.402	3476.63	-324.70	-312.25	354.15	0.00	
3620.00†	10.893	131.402	3574.83	-337.70	-324.75	368.33	0.00	
3720.00†	10.893	131.402	3673.03	-350.69	-337.25	382.50	0.00	
3820.00†	10.893	131.402	3771.22	-363.69	-349.74	396.68	0.00	
3920.00†	10.893	131.402	3869.42	-376.69	-362.24	410.85	0.00	
4020.00†	10.893	131.402	3967.62	-389.68	-374.74	425.02	0.00	
4120.00†	10.893	131.402	4065.82	-402.68	-387.24	439.20	0.00	
4220.00†	10.893	131.402	4164.02	-415.67	-399.73	453.37	0.00	
4320.00†	10.893	131.402	4262.22	-428.67	-412.23	467.55	0.00	
4420.00†	10.893	131.402	4360.41	-441.67	-424.73	481.72	0.00	
4520.00†	10.893	131.402	4458.61	-454.66	-437.23	495.90	0.00	
4620.00†	10.893	131.402	4556.81	-467.66	-449.72	510.07	0.00	
4720.00†	10.893	131.402	4655.01	-480.65	-462.22	524.25	0.00	
4820.00†	10.893	131.402	4753.21	-493.65	-474.72	538.42	0.00	
4920.00†	10.893	131.402	4851.40	-506.64	-487.22	552.60	0.00	
5020.00†	10.893	131.402	4949.60	-519.64	-499.72	566.77	0.00	
5120.00†	10.893	131.402	5047.80	-532.64	-512.21	580.95	0.00	
5220.00†	10.893	131.402	5146.00	-545.63	-524.71	595.12	0.00	
5320.00†	10.893	131.402	5244.20	-558.63	-537.21	609.29	0.00	
5420.00†	10.893	131.402	5342.40	-571.62	-549.71	623.47	0.00	
5520.00†	10.893	131.402	5440.59	-584.62	-562.20	637.64	0.00	
5620.00†	10.893	131.402	5538.79	-597.62	-574.70	651.82	0.00	



SRC ENERGY

Planned Wellpath Report

GREELEY-ROTH 34C-2-L PWP (REV-A.1)

Page 4 of 7

**BAKER
HUGHES****REFERENCE WELLPATH IDENTIFICATION**

Operator	SRC ENERGY	Slot	SLOT#24 GREELEY-ROTH 34C-2-L (943'FSL & 294'FEL, SEC.01)
Area	COLORADO	Well	GREELEY-ROTH 34C-2-L
Field	WELD COUNTY (NAD83, TRUE NORTH)	Wellbore	GREELEY-ROTH 34C-2-L PWB
Facility	SEC.01-T05N-R67W		

WELLPATH DATA (180 stations) † = interpolated/extrapolated station

MD [ft]	Inclination [°]	Azimuth [°]	TVD [ft]	Vert Sect [ft]	North [ft]	East [ft]	DLS [°/100ft]	Comments
5720.00†	10.893	131.402	5636.99	-610.61	-587.20	665.99	0.00	
5820.00†	10.893	131.402	5735.19	-623.61	-599.70	680.17	0.00	
5920.00†	10.893	131.402	5833.39	-636.60	-612.19	694.34	0.00	
6020.00†	10.893	131.402	5931.58	-649.60	-624.69	708.52	0.00	
6120.00†	10.893	131.402	6029.78	-662.59	-637.19	722.69	0.00	
6220.00†	10.893	131.402	6127.98	-675.59	-649.69	736.87	0.00	
6320.00†	10.893	131.402	6226.18	-688.59	-662.18	751.04	0.00	
6420.00†	10.893	131.402	6324.38	-701.58	-674.68	765.21	0.00	
6520.00†	10.893	131.402	6422.58	-714.58	-687.18	779.39	0.00	
6522.18	10.893	131.402	6424.71	-714.86	-687.45	779.70	0.00	End of Tangent
6620.00†	7.354	185.124	6521.44	-720.11	-699.82	786.08	9.00	
6720.00†	12.142	232.878	6620.12	-710.03	-712.57	777.11	9.00	
6820.00†	20.047	248.923	6716.17	-684.57	-725.11	752.68	9.00	
6920.00†	28.591	255.901	6807.23	-644.37	-737.12	713.40	9.00	
7020.00†	37.336	259.839	6891.06	-590.42	-748.33	660.23	9.00	
7120.00†	46.168	262.449	6965.59	-524.04	-758.44	594.49	9.00	
7220.00†	55.044	264.381	7029.00	-446.86	-767.21	517.80	9.00	
7320.00†	63.945	265.932	7079.71	-360.80	-774.42	432.03	9.00	
7420.00†	72.860	267.262	7116.48	-267.96	-779.90	339.31	9.00	
7520.00†	81.783	268.470	7138.41	-170.63	-783.51	241.92	9.00	
7610.81	89.889	269.518	7145.00†	-80.37	-785.10	151.44	9.00	End of 3D Arc
7620.00†	89.889	269.518	7145.02	-71.21	-785.17	142.25	0.00	
7720.00†	89.889	269.518	7145.21	28.45	-786.01	42.25	0.00	
7820.00†	89.889	269.518	7145.41	128.12	-786.85	-57.74	0.00	
7920.00†	89.889	269.518	7145.60	227.79	-787.70	-157.74	0.00	
8020.00†	89.889	269.518	7145.80	327.46	-788.54	-257.74	0.00	
8120.00†	89.889	269.518	7145.99	427.13	-789.38	-357.73	0.00	
8220.00†	89.889	269.518	7146.18	526.79	-790.22	-457.73	0.00	
8320.00†	89.889	269.518	7146.38	626.46	-791.06	-557.73	0.00	
8420.00†	89.889	269.518	7146.57	726.13	-791.90	-657.72	0.00	



SRC ENERGY

Planned Wellpath Report

GREELEY-ROTH 34C-2-L PWP (REV-A.1)

Page 5 of 7



**BAKER
HUGHES**

REFERENCE WELLPATH IDENTIFICATION

Operator	SRC ENERGY	Slot	SLOT#24 GREELEY-ROTH 34C-2-L (943'FSL & 294'FEL, SEC.01)
Area	COLORADO	Well	GREELEY-ROTH 34C-2-L
Field	WELD COUNTY (NAD83,TRUE NORTH)	Wellbore	GREELEY-ROTH 34C-2-L PWB
Facility	SEC.01-T05N-R67W		

WELLPATH DATA (180 stations) † = interpolated/extrapolated station

MD [ft]	Inclination [°]	Azimuth [°]	TVD [ft]	Vert Sect [ft]	North [ft]	East [ft]	DLS [°/100ft]	Comments
8520.00†	89.889	269.518	7146.77	825.80	-792.74	-757.72	0.00	
8620.00†	89.889	269.518	7146.96	925.47	-793.58	-857.71	0.00	
8720.00†	89.889	269.518	7147.16	1025.14	-794.42	-957.71	0.00	
8820.00†	89.889	269.518	7147.35	1124.80	-795.26	-1057.71	0.00	
8920.00†	89.889	269.518	7147.54	1224.47	-796.10	-1157.70	0.00	
9020.00†	89.889	269.518	7147.74	1324.14	-796.94	-1257.70	0.00	
9120.00†	89.889	269.518	7147.93	1423.81	-797.79	-1357.70	0.00	
9220.00†	89.889	269.518	7148.13	1523.48	-798.63	-1457.69	0.00	
9320.00†	89.889	269.518	7148.32	1623.15	-799.47	-1557.69	0.00	
9420.00†	89.889	269.518	7148.52	1722.81	-800.31	-1657.68	0.00	
9520.00†	89.889	269.518	7148.71	1822.48	-801.15	-1757.68	0.00	
9620.00†	89.889	269.518	7148.90	1922.15	-801.99	-1857.68	0.00	
9720.00†	89.889	269.518	7149.10	2021.82	-802.83	-1957.67	0.00	
9820.00†	89.889	269.518	7149.29	2121.49	-803.67	-2057.67	0.00	
9920.00†	89.889	269.518	7149.49	2221.16	-804.51	-2157.67	0.00	
10020.00†	89.889	269.518	7149.68	2320.82	-805.35	-2257.66	0.00	
10120.00†	89.889	269.518	7149.88	2420.49	-806.19	-2357.66	0.00	
10220.00†	89.889	269.518	7150.07	2520.16	-807.04	-2457.65	0.00	
10320.00†	89.889	269.518	7150.26	2619.83	-807.88	-2557.65	0.00	
10420.00†	89.889	269.518	7150.46	2719.50	-808.72	-2657.65	0.00	
10520.00†	89.889	269.518	7150.65	2819.17	-809.56	-2757.64	0.00	
10620.00†	89.889	269.518	7150.85	2918.83	-810.40	-2857.64	0.00	
10720.00†	89.889	269.518	7151.04	3018.50	-811.24	-2957.64	0.00	
10820.00†	89.889	269.518	7151.24	3118.17	-812.08	-3057.63	0.00	
10920.00†	89.889	269.518	7151.43	3217.84	-812.92	-3157.63	0.00	
11020.00†	89.889	269.518	7151.62	3317.51	-813.76	-3257.62	0.00	
11120.00†	89.889	269.518	7151.82	3417.18	-814.60	-3357.62	0.00	
11220.00†	89.889	269.518	7152.01	3516.84	-815.44	-3457.62	0.00	
11320.00†	89.889	269.518	7152.21	3616.51	-816.29	-3557.61	0.00	
11420.00†	89.889	269.518	7152.40	3716.18	-817.13	-3657.61	0.00	



SRC ENERGY

Planned Wellpath Report

GREELEY-ROTH 34C-2-L PWP (REV-A.1)

Page 6 of 7



**BAKER
HUGHES**

REFERENCE WELLPATH IDENTIFICATION

Operator	SRC ENERGY	Slot	SLOT#24 GREELEY-ROTH 34C-2-L (943'FSL & 294'FEL, SEC.01)
Area	COLORADO	Well	GREELEY-ROTH 34C-2-L
Field	WELD COUNTY (NAD83,TRUE NORTH)	Wellbore	GREELEY-ROTH 34C-2-L PWB
Facility	SEC.01-T05N-R67W		

WELLPATH DATA (180 stations) † = interpolated/extrapolated station

MD [ft]	Inclination [°]	Azimuth [°]	TVD [ft]	Vert Sect [ft]	North [ft]	East [ft]	DLS [°/100ft]	Comments
11520.00†	89.889	269.518	7152.60	3815.85	-817.97	-3757.61	0.00	
11620.00†	89.889	269.518	7152.79	3915.52	-818.81	-3857.60	0.00	
11720.00†	89.889	269.518	7152.98	4015.18	-819.65	-3957.60	0.00	
11820.00†	89.889	269.518	7153.18	4114.85	-820.49	-4057.59	0.00	
11920.00†	89.889	269.518	7153.37	4214.52	-821.33	-4157.59	0.00	
12020.00†	89.889	269.518	7153.57	4314.19	-822.17	-4257.59	0.00	
12120.00†	89.889	269.518	7153.76	4413.86	-823.01	-4357.58	0.00	
12220.00†	89.889	269.518	7153.96	4513.53	-823.85	-4457.58	0.00	
12320.00†	89.889	269.518	7154.15	4613.19	-824.69	-4557.58	0.00	
12420.00†	89.889	269.518	7154.35	4712.86	-825.54	-4657.57	0.00	
12520.00†	89.889	269.518	7154.54	4812.53	-826.38	-4757.57	0.00	
12620.00†	89.889	269.518	7154.73	4912.20	-827.22	-4857.56	0.00	
12720.00†	89.889	269.518	7154.93	5011.87	-828.06	-4957.56	0.00	
12820.00†	89.889	269.518	7155.12	5111.54	-828.90	-5057.56	0.00	
12920.00†	89.889	269.518	7155.32	5211.20	-829.74	-5157.55	0.00	
13020.00†	89.889	269.518	7155.51	5310.87	-830.58	-5257.55	0.00	
13120.00†	89.889	269.518	7155.71	5410.54	-831.42	-5357.55	0.00	
13220.00†	89.889	269.518	7155.90	5510.21	-832.26	-5457.54	0.00	
13320.00†	89.889	269.518	7156.09	5609.88	-833.10	-5557.54	0.00	
13420.00†	89.889	269.518	7156.29	5709.55	-833.94	-5657.54	0.00	
13520.00†	89.889	269.518	7156.48	5809.21	-834.78	-5757.53	0.00	
13620.00†	89.889	269.518	7156.68	5908.88	-835.63	-5857.53	0.00	
13720.00†	89.889	269.518	7156.87	6008.55	-836.47	-5957.52	0.00	
13820.00†	89.889	269.518	7157.07	6108.22	-837.31	-6057.52	0.00	
13920.00†	89.889	269.518	7157.26	6207.89	-838.15	-6157.52	0.00	
14020.00†	89.889	269.518	7157.45	6307.56	-838.99	-6257.51	0.00	
14120.00†	89.889	269.518	7157.65	6407.22	-839.83	-6357.51	0.00	
14220.00†	89.889	269.518	7157.84	6506.89	-840.67	-6457.51	0.00	
14320.00†	89.889	269.518	7158.04	6606.56	-841.51	-6557.50	0.00	
14420.00†	89.889	269.518	7158.23	6706.23	-842.35	-6657.50	0.00	



SRC ENERGY

Planned Wellpath Report

GREELEY-ROTH 34C-2-L PWP (REV-A.1)

Page 7 of 7

**BAKER
HUGHES****REFERENCE WELLPATH IDENTIFICATION**

Operator	SRC ENERGY	Slot	SLOT#24 GREELEY-ROTH 34C-2-L (943'FSL & 294'FEL, SEC.01)
Area	COLORADO	Well	GREELEY-ROTH 34C-2-L
Field	WELD COUNTY (NAD83, TRUE NORTH)	Wellbore	GREELEY-ROTH 34C-2-L PWB
Facility	SEC.01-T05N-R67W		

WELLPATH DATA (180 stations) † = interpolated/extrapolated station

MD [ft]	Inclination [°]	Azimuth [°]	TVD [ft]	Vert Sect [ft]	North [ft]	East [ft]	DLS [°/100ft]	Comments
14520.00†	89.889	269.518	7158.43	6805.90	-843.19	-6757.49	0.00	
14620.00†	89.889	269.518	7158.62	6905.57	-844.03	-6857.49	0.00	
14720.00†	89.889	269.518	7158.81	7005.23	-844.88	-6957.49	0.00	
14820.00†	89.889	269.518	7159.01	7104.90	-845.72	-7057.48	0.00	
14920.00†	89.889	269.518	7159.20	7204.57	-846.56	-7157.48	0.00	
15020.00†	89.889	269.518	7159.40	7304.24	-847.40	-7257.48	0.00	
15120.00†	89.889	269.518	7159.59	7403.91	-848.24	-7357.47	0.00	
15220.00†	89.889	269.518	7159.79	7503.58	-849.08	-7457.47	0.00	
15320.00†	89.889	269.518	7159.98	7603.24	-849.92	-7557.46	0.00	
15420.00†	89.889	269.518	7160.17	7702.91	-850.76	-7657.46	0.00	
15520.00†	89.889	269.518	7160.37	7802.58	-851.60	-7757.46	0.00	
15620.00†	89.889	269.518	7160.56	7902.25	-852.44	-7857.45	0.00	
15720.00†	89.889	269.518	7160.76	8001.92	-853.28	-7957.45	0.00	
15820.00†	89.889	269.518	7160.95	8101.58	-854.13	-8057.45	0.00	
15920.00†	89.889	269.518	7161.15	8201.25	-854.97	-8157.44	0.00	
16020.00†	89.889	269.518	7161.34	8300.92	-855.81	-8257.44	0.00	
16120.00†	89.889	269.518	7161.53	8400.59	-856.65	-8357.43	0.00	
16220.00†	89.889	269.518	7161.73	8500.26	-857.49	-8457.43	0.00	
16320.00†	89.889	269.518	7161.92	8599.93	-858.33	-8557.43	0.00	
16420.00†	89.889	269.518	7162.12	8699.59	-859.17	-8657.42	0.00	
16520.00†	89.889	269.518	7162.31	8799.26	-860.01	-8757.42	0.00	
16620.00†	89.889	269.518	7162.51	8898.93	-860.85	-8857.42	0.00	
16720.00†	89.889	269.518	7162.70	8998.60	-861.69	-8957.41	0.00	
16820.00†	89.889	269.518	7162.90	9098.27	-862.53	-9057.41	0.00	
16920.00†	89.889	269.518	7163.09	9197.94	-863.37	-9157.40	0.00	
17020.00†	89.889	269.518	7163.28	9297.60	-864.22	-9257.40	0.00	
17120.00†	89.889	269.518	7163.48	9397.27	-865.06	-9357.40	0.00	
17220.00†	89.889	269.518	7163.67	9496.94	-865.90	-9457.39	0.00	
17320.00†	89.889	269.518	7163.87	9596.61	-866.74	-9557.39	0.00	
17388.56	89.889	269.518	7164.00 ²	9664.94	-867.31	-9625.94	0.00	End of Tangent

HOLE & CASING SECTIONS**- Ref Wellbore: GREELEY-ROTH 34C-2-L PWB Ref Wellpath: GREELEY-ROTH 34C-2-L PWP (REV-A.1)**

String/Diameter	Start MD [ft]	End MD [ft]	Interval [ft]	Start TVD [ft]	End TVD [ft]	Start N/S [ft]	Start E/W [ft]	End N/S [ft]	End E/W [ft]
13.5in Open Hole	20.00	1750.00	1730.00	20.00	1738.52	0.00	0.00	-91.04	103.26
9.625in Casing Surface	20.00	1750.00	1730.00	20.00	1738.52	0.00	0.00	-91.04	103.26
8.5in Open Hole	1750.00	17388.56	15638.56	1738.52	7164.00	-91.04	103.26	-867.31	-9625.94

TARGETS

Name	MD [ft]	TVD [ft]	North [ft]	East [ft]	Grid East [US ft]	Grid North [US ft]	Latitude	Longitude	Shape
SEC.01-T05N-R67W		23.00	1424.87	-2.55	3185545.50	1399477.36	40°25'40.991"N	104°50'00.640"W	polygon
SEC.02-T05N-R67W		23.00	1424.87	-2.55	3185545.50	1399477.36	40°25'40.991"N	104°50'00.640"W	polygon

TARGETS									
Name	MD [ft]	TVD [ft]	North [ft]	East [ft]	Grid East [US ft]	Grid North [US ft]	Latitude	Longitude	Shape
1) GREELEY ROTH 34C-2-L TOP OF PROD ON PLAT (152'FSL & 150'FEL, SEC.01)	7610.81	7145.00	-785.10	151.44	3185716.09	1397268.70	40°25'19.153"N	104°49'58.649"W	circle
2) GREELEY ROTH 34C-2-L BHL ON PLAT (169'FSL & 460'FWL, SEC.02)	17388.56	7164.00	-867.31	-9625.94	3175940.00	1397113.00	40°25'18.322"N	104°52'05.066"W	circle

SURVEY PROGRAM -				
Ref Wellbore: GREELEY-ROTH 34C-2-L PWB		Ref Wellpath: GREELEY-ROTH 34C-2-L PWP (REV-A.1)		
Start MD [ft]	End MD [ft]	Positional Uncertainty Model	Log Name/Comment	Wellbore
20.00	1750.00	Custom BHI NaviTrak (IFR1, Standard Rotating+Axial Corr) (Rockies 0.03Gt model)		GREELEY-ROTH 34C-2-L PWB
1750.00	17388.56	Custom BHI AutoTrak Curve (IFR1, Short) (Rockies 0.03Gt model)		GREELEY-ROTH 34C-2-L PWB