

SRC ENERGY

Location: COLORADO Slot: SLOT#15 GREELEY-ROTHER FEDERAL 12N-2C-L (1123'FSL & 294'FEL, SEC.01)
Field: WELD COUNTY (NAD83, TRUE NORTH) Well: GREELEY-ROTHER FEDERAL 12N-2C-L
Facility: SEC.01-T05N-R67W Wellbore: GREELEY-ROTHER FEDERAL 12N-2C-L PWB

Pilot reference wellpath is GREELEY-ROTHER FEDERAL 12N-2C-L PWB (REV-A.0)	Grid System: NAD83 / Lambert Colorado SP, Northern Zone (501), US feet
True vertical depths are referenced to PRECISION 462 (20) (RKB)	* = Wellpath was transformed from a different geodetic datum
Measured depths are referenced to PRECISION 462 (20) (RKB)	North Reference: True north
PRECISION 462 (20) (RKB) to Mean Sea Level: 4891 feet	Scale: True distance
Mean Sea Level to Mud line (At Slot: SLOT#15 GREELEY-ROTHER FEDERAL 12N-2C-L (1123'FSL & 294'FEL, SEC.01)): 0 feet	Depths are in feet
Coordinates are in feet referenced to Slot	Created by: doddiana on 2017-10-04
	Database: WellArcheoDB

Location Information

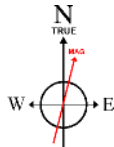
Facility Name	Grid East (US ft)	Grid North (US ft)	Latitude	Longitude
SEC.01-T05N-R67W	3185545.499	1399477.355	40°25'40.991"N	104°50'00.640"W
Slot	Local N (ft)	Local E (ft)	Grid East (US ft)	Grid North (US ft)
SLOT#15 GREELEY-ROTHER FEDERAL 12N-2C-L (1123'FSL & 294'FEL, SEC.01)	-1244.84	0.31	3185555.164	1399232.603
PRECISION 462 (20) (RKB) to Mud line (At Slot: SLOT#15 GREELEY-ROTHER FEDERAL 12N-2C-L (1123'FSL & 294'FEL, SEC.01))				4891ft
Mean Sea Level to Mud line (At Slot: SLOT#15 GREELEY-ROTHER FEDERAL 12N-2C-L (1123'FSL & 294'FEL, SEC.01))				0ft
PRECISION 462 (20) (RKB) to Mean Sea Level				4891ft

Survey Program

Start MD (ft)	End MD (ft)	Tool	Model	Log Name/Comment	Wellbore
20.00	1750.00	BHI NavTrak	Custom BHI NavTrak (Standard Rotating+Azal Corr) (Rockies 0.03Gr model)		GREELEY-ROTHER FEDERAL 12N-2C-L PWB
1750.00	17192.80	BHI AutoTrak Curve	Custom BHI AutoTrak Curve (FR1, Short) (Rockies 0.03Gr model)		GREELEY-ROTHER FEDERAL 12N-2C-L PWB

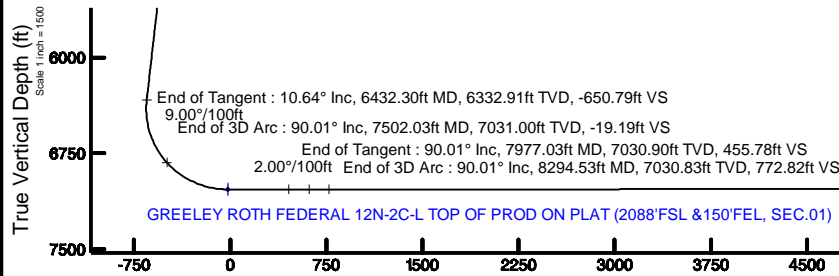


SRC ENERGY



BGGM (1900.0 to 2018.0) Dip: 66.87° Field: 52416.1 nT
Magnetic North is 8.39 degrees East of True North (at 9/22/2017)

To correct azimuth from Magnetic to True add 8.39 degrees



Azimuth 276.80° with reference 0.00 N, 0.00 E

Targets

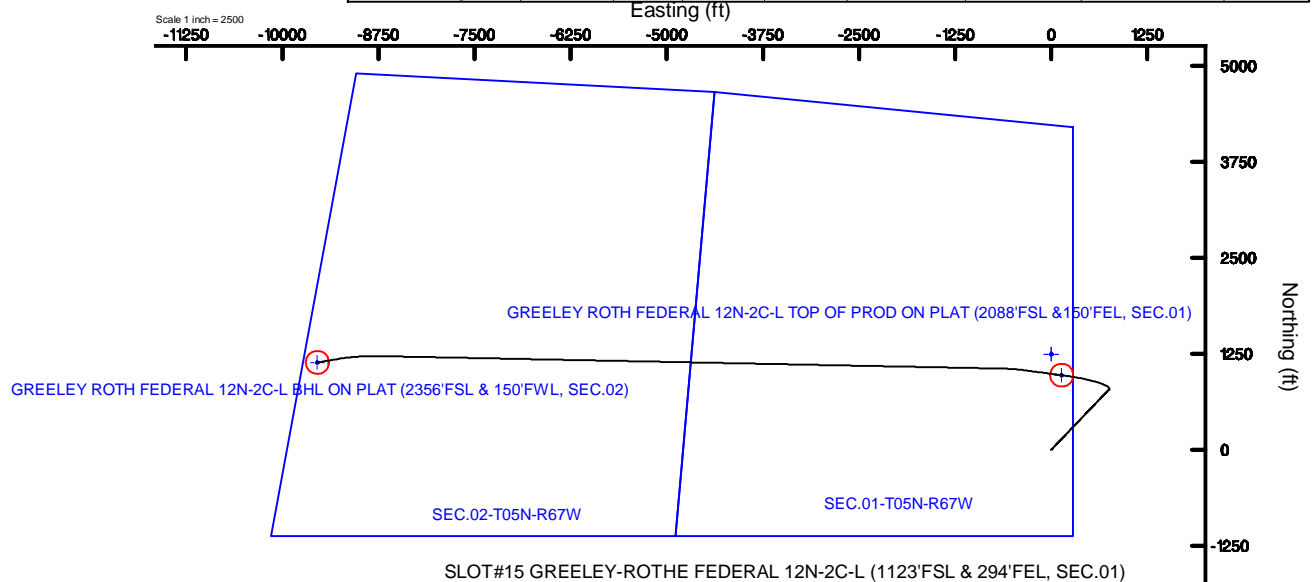
Name	MD (ft)	TVD (ft)	Local N (ft)	Local E (ft)	Grid East (US ft)	Grid North (US ft)	Latitude	Longitude
SEC.01-T05N-R67W		21.00	1244.84	-0.31	3185545.50	1399477.36	40°25'40.991"N	104°50'00.640"W
SEC.02-T05N-R67W		21.00	1244.84	-0.31	3185545.50	1399477.36	40°25'40.991"N	104°50'00.640"W
GREELEY ROTH FEDERAL 12N-2C-L BHL ON PLAT (2356'FSL & 150'FWL, SEC.02)	17192.80	7029.00	1137.37	-9543.26	3176004.02	1399098.17	40°25'39.911"N	104°50'04.037"W
GREELEY ROTH FEDERAL 12N-2C-L TOP OF PROD ON PLAT (2088'FSL & 150'FWL, SEC.01)	7502.03	7031.00	970.86	135.03	3185682.89	1399204.41	40°25'38.284"N	104°49'58.880"W

Hole and Casing Sections

Name	Start MD (ft)	End MD (ft)	Interval (ft)	Start TVD (ft)	End TVD (ft)	Start Local N (ft)	Start Local E (ft)	End Local N (ft)	End Local E (ft)	Wellbore
13.5in Open Hole	20.00	1750.00	1730.00	20.00	1731.16	0.00	0.00	158.16	151.19	GREELEY-ROTHER FEDERAL 12N-2C-L PWB
9.625in Casing Surface	20.00	1750.00	1730.00	20.00	1731.16	0.00	0.00	158.16	151.19	GREELEY-ROTHER FEDERAL 12N-2C-L PWB
8.5in Open Hole	1750.00	17192.80	15442.80	1731.16	7029.00	158.16	151.19	1137.37	-9543.26	GREELEY-ROTHER FEDERAL 12N-2C-L PWB

Well Profile Data

Design Comment	MD (ft)	Inc (°)	Az (°)	TVD (ft)	Local N (ft)	Local E (ft)	DLS (°/100ft)	VS (ft)
Tie On	20.00	0.000	43.709	20.00	0.00	0.00	0.00	0.00
End of Tangent	300.00	0.000	43.709	300.00	0.00	0.00	0.00	0.00
End of Build	832.15	10.643	43.709	829.10	35.62	34.05	2.00	-29.60
End of Tangent	6432.30	10.643	43.709	6332.91	783.27	748.75	0.00	-650.79
End of 3D Arc	7502.03	90.012	277.500	7031.00	970.86	135.03	9.00	-19.19
End of Tangent	7977.03	90.012	277.500	7030.90	1032.86	-335.91	0.00	455.78
End of 3D Arc	8294.53	90.012	271.150	7030.83	1056.79	-652.34	2.00	772.82
End of Tangent	16394.53	90.012	271.150	7029.14	1219.35	-8750.71	0.00	8833.52
End of 3D Arc	16920.63	90.009	260.628	7029.04	1181.69	-9274.72	2.00	9349.39
End of Tangent	17192.80	90.009	260.628	7029.00	1137.37	-9543.26	0.00	9610.79



End of Tangent : 90.01° Inc, 16394.53ft MD, 7029.14ft TVD, 8833.52ft VS
2.00°/100ft
End of 3D Arc : 90.01° Inc, 16920.63ft MD, 7029.04ft TVD, 9349.39ft VS

End of Tangent : 90.01° Inc, 17192.80ft MD, 7029.00ft TVD, 9610.79ft VS
GREELEY ROTH FEDERAL 12N-2C-L BHL ON PLAT (2356'FSL & 150'FWL, SEC.02)

Scale 1 inch = 1500

GREELEY-ROTHE_FEDERAL_12N-2C-L_PWP__REV-A.0_.las

~VERSION INFORMATION

VERS. 2.0 : CWLS LOG ASCII STANDARD-VERSION 2.0

WRAP. NO : ASCII DATA SECTION CONTAINS ONE ROW PER WELLPATH STATION

~WELL INFORMATION

#MNEM	.UNITS	DATA	:DESCRIPTION
#----	.-----	----	:-----
STRT	.ft	0.00	:START MD
STOP	.ft	17192.80	:STOP MD
STEP	.ft	0.0	:STEP (non-uniform increment)
NULL	.	-999.99	:NULL
COMP	.	SRC ENERGY	:OPERATOR
WELL	.	GREELEY-ROTHE FEDERAL 12N-2C-L	:WELL
FLD	.	WELD COUNTY (NAD83,TRUE NORTH)	:FIELD
LOC	.	COLORADO	:AREA (aka: Location)
CNTY	.	N/A	:COUNTY
STAT	.	N/A	:STATE
CTRY	.	N/A	:COUNTRY
SRVC	.	Baker Hughes	:CONTRACTOR
DATE	.	10/04/2017	:LOG REV DATE
API	.		:API NUMBER

~OTHER INFORMATION

#Software: WellArchitect(R) Version 5.0

#MNEM	.UNITS	DATA	:DESCRIPTION
#----	.-----	----	:-----
WPTYPE	.	PLANNED WELLPATH	:WELLPATH TYPE
FACILITY	.	SEC.01-T05N-R67W	:FACILITY
SLOT	.	SLOT#15 GREELEY-ROTHE FEDERAL 12N-2C-L (1123'FSL & 294'FEL, SEC.01)	:SLOT
WELLBORE	.	GREELEY-ROTHE FEDERAL 12N-2C-L PWB	:WELLBORE
WELLPATH	.	GREELEY-ROTHE FEDERAL 12N-2C-L PWP (REV-A.0)	:WELLPATH
MDREFPT	.	PRECISION 462 (20') (RKB)	:MD REFERENCE POINT
TVDREFPT	.	PRECISION 462 (20') (RKB)	:TVD REFERENCE POINT
LCLREFPT	.	Slot	:LOCAL COORDINATE REFERENCE PT

GREELEY-ROTHER_FEDERAL_12N-2C-L_PWP__REV-A.0_.las

VSAZIMUTH.deg	276.80	:VERTICAL SECTION AZIMUTH
VSORIGIN .ft	0.00	:VERTICAL SECTION ORIGIN NORTH
VSORIGE .ft	0.00	:VERTICAL SECTION ORIGIN EAST

~CURVE (WELLPATH) INFORMATION

#MNEM	.UNITS	:DESCRIPTION
#----	.-----	:-----
DEPT	.ft	:MEASURED DEPTH
INC	.deg	:INCLINATION
AZI	.deg	:AZIMUTH
TVD	.ft	:TRUE VERTICAL DEPTH
SECT	.ft	:CROSS SECTION (CURTAIN/VERTICAL)
LOCALN	.ft	:LOCAL NORTH
LOCALE	.ft	:LOCAL EAST
LAT	.deg	:LATITUDE
LONG	.deg	:LONGITUDE
DLS	.deg/100ft	:DOGLEG SEVERITY

~ASCII DATA

0.00	0.00	43.71	0.00	0.00	0.00	0.00	40.4246361	-104.8335100	0.00
20.00	0.00	43.71	20.00	0.00	0.00	0.00	40.4246361	-104.8335100	0.00
120.00	0.00	43.71	120.00	0.00	0.00	0.00	40.4246361	-104.8335100	0.00
220.00	0.00	43.71	220.00	0.00	0.00	0.00	40.4246361	-104.8335100	0.00
300.00	0.00	43.71	300.00	0.00	0.00	0.00	40.4246361	-104.8335100	0.00
320.00	0.40	43.71	320.00	-0.04	0.05	0.05	40.4246362	-104.8335098	2.00
420.00	2.40	43.71	419.96	-1.51	1.82	1.74	40.4246411	-104.8335038	2.00
520.00	4.40	43.71	519.78	-5.07	6.10	5.83	40.4246529	-104.8334890	2.00
620.00	6.40	43.71	619.33	-10.72	12.91	12.34	40.4246715	-104.8334657	2.00
720.00	8.40	43.71	718.50	-18.46	22.22	21.24	40.4246971	-104.8334337	2.00
820.00	10.40	43.71	817.15	-28.27	34.02	32.52	40.4247295	-104.8333932	2.00
832.15	10.64	43.71	829.10	-29.60	35.62	34.05	40.4247339	-104.8333877	2.00
920.00	10.64	43.71	915.43	-39.34	47.35	45.27	40.4247661	-104.8333474	0.00
1020.00	10.64	43.71	1013.71	-50.44	60.70	58.03	40.4248027	-104.8333016	0.00
1120.00	10.64	43.71	1111.99	-61.53	74.05	70.79	40.4248394	-104.8332557	0.00

GREELEY-ROTHER_FEDERAL_12N-2C-L_PWP__REV-A.0_.las

1220.00	10.64	43.71	1210.27	-72.62	87.40	83.55	40.4248760	-104.8332099	0.00
1320.00	10.64	43.71	1308.55	-83.71	100.75	96.31	40.4249127	-104.8331641	0.00
1420.00	10.64	43.71	1406.83	-94.81	114.11	109.08	40.4249493	-104.8331182	0.00
1520.00	10.64	43.71	1505.11	-105.90	127.46	121.84	40.4249860	-104.8330724	0.00
1620.00	10.64	43.71	1603.39	-116.99	140.81	134.60	40.4250226	-104.8330266	0.00
1720.00	10.64	43.71	1701.67	-128.08	154.16	147.36	40.4250593	-104.8329807	0.00
1820.00	10.64	43.71	1799.95	-139.18	167.51	160.12	40.4250959	-104.8329349	0.00
1920.00	10.64	43.71	1898.23	-150.27	180.86	172.89	40.4251325	-104.8328890	0.00
2020.00	10.64	43.71	1996.51	-161.36	194.21	185.65	40.4251692	-104.8328432	0.00
2120.00	10.64	43.71	2094.79	-172.45	207.56	198.41	40.4252058	-104.8327974	0.00
2220.00	10.64	43.71	2193.07	-183.54	220.91	211.17	40.4252425	-104.8327515	0.00
2320.00	10.64	43.71	2291.35	-194.64	234.26	223.93	40.4252791	-104.8327057	0.00
2420.00	10.64	43.71	2389.63	-205.73	247.61	236.70	40.4253158	-104.8326599	0.00
2520.00	10.64	43.71	2487.91	-216.82	260.96	249.46	40.4253524	-104.8326140	0.00
2620.00	10.64	43.71	2586.19	-227.91	274.31	262.22	40.4253891	-104.8325682	0.00
2720.00	10.64	43.71	2684.47	-239.01	287.66	274.98	40.4254257	-104.8325223	0.00
2820.00	10.64	43.71	2782.75	-250.10	301.01	287.74	40.4254624	-104.8324765	0.00
2920.00	10.64	43.71	2881.03	-261.19	314.36	300.51	40.4254990	-104.8324307	0.00
3020.00	10.64	43.71	2979.31	-272.28	327.71	313.27	40.4255356	-104.8323848	0.00
3120.00	10.64	43.71	3077.59	-283.38	341.06	326.03	40.4255723	-104.8323390	0.00
3220.00	10.64	43.71	3175.87	-294.47	354.41	338.79	40.4256089	-104.8322931	0.00
3320.00	10.64	43.71	3274.15	-305.56	367.76	351.55	40.4256456	-104.8322473	0.00
3420.00	10.64	43.71	3372.43	-316.65	381.11	364.32	40.4256822	-104.8322015	0.00
3520.00	10.64	43.71	3470.71	-327.75	394.47	377.08	40.4257189	-104.8321556	0.00
3620.00	10.64	43.71	3568.99	-338.84	407.82	389.84	40.4257555	-104.8321098	0.00
3720.00	10.64	43.71	3667.26	-349.93	421.17	402.60	40.4257922	-104.8320640	0.00
3820.00	10.64	43.71	3765.54	-361.02	434.52	415.36	40.4258288	-104.8320181	0.00
3920.00	10.64	43.71	3863.82	-372.12	447.87	428.13	40.4258654	-104.8319723	0.00
4020.00	10.64	43.71	3962.10	-383.21	461.22	440.89	40.4259021	-104.8319264	0.00
4120.00	10.64	43.71	4060.38	-394.30	474.57	453.65	40.4259387	-104.8318806	0.00
4220.00	10.64	43.71	4158.66	-405.39	487.92	466.41	40.4259754	-104.8318348	0.00
4320.00	10.64	43.71	4256.94	-416.48	501.27	479.17	40.4260120	-104.8317889	0.00
4420.00	10.64	43.71	4355.22	-427.58	514.62	491.94	40.4260487	-104.8317431	0.00
4520.00	10.64	43.71	4453.50	-438.67	527.97	504.70	40.4260853	-104.8316972	0.00

GREELEY-ROTHE_FEDERAL_12N-2C-L_PWP__REV-A.0_.las

4620.00	10.64	43.71	4551.78	-449.76	541.32	517.46	40.4261220	-104.8316514	0.00
4720.00	10.64	43.71	4650.06	-460.85	554.67	530.22	40.4261586	-104.8316056	0.00
4820.00	10.64	43.71	4748.34	-471.95	568.02	542.98	40.4261952	-104.8315597	0.00
4920.00	10.64	43.71	4846.62	-483.04	581.37	555.75	40.4262319	-104.8315139	0.00
5020.00	10.64	43.71	4944.90	-494.13	594.72	568.51	40.4262685	-104.8314680	0.00
5120.00	10.64	43.71	5043.18	-505.22	608.07	581.27	40.4263052	-104.8314222	0.00
5220.00	10.64	43.71	5141.46	-516.32	621.42	594.03	40.4263418	-104.8313764	0.00
5320.00	10.64	43.71	5239.74	-527.41	634.77	606.79	40.4263785	-104.8313305	0.00
5420.00	10.64	43.71	5338.02	-538.50	648.12	619.56	40.4264151	-104.8312847	0.00
5520.00	10.64	43.71	5436.30	-549.59	661.47	632.32	40.4264518	-104.8312388	0.00
5620.00	10.64	43.71	5534.58	-560.69	674.83	645.08	40.4264884	-104.8311930	0.00
5720.00	10.64	43.71	5632.86	-571.78	688.18	657.84	40.4265251	-104.8311472	0.00
5820.00	10.64	43.71	5731.14	-582.87	701.53	670.60	40.4265617	-104.8311013	0.00
5920.00	10.64	43.71	5829.42	-593.96	714.88	683.37	40.4265983	-104.8310555	0.00
6020.00	10.64	43.71	5927.70	-605.06	728.23	696.13	40.4266350	-104.8310097	0.00
6120.00	10.64	43.71	6025.98	-616.15	741.58	708.89	40.4266716	-104.8309638	0.00
6220.00	10.64	43.71	6124.26	-627.24	754.93	721.65	40.4267083	-104.8309180	0.00
6320.00	10.64	43.71	6222.54	-638.33	768.28	734.41	40.4267449	-104.8308721	0.00
6420.00	10.64	43.71	6320.82	-649.42	781.63	747.18	40.4267816	-104.8308263	0.00
6432.30	10.64	43.71	6332.91	-650.79	783.27	748.75	40.4267861	-104.8308207	0.00
6520.00	8.77	356.76	6419.47	-654.49	795.82	753.97	40.4268205	-104.8308019	9.00
6620.00	13.66	316.12	6517.68	-644.01	811.98	745.34	40.4268649	-104.8308329	9.00
6720.00	21.37	300.30	6613.02	-618.12	829.72	721.38	40.4269136	-104.8309189	9.00
6820.00	29.79	292.86	6703.16	-577.45	848.60	682.67	40.4269654	-104.8310580	9.00
6920.00	38.46	288.51	6785.87	-523.01	868.16	630.18	40.4270191	-104.8312465	9.00
7020.00	47.24	285.56	6859.12	-456.14	887.92	565.19	40.4270733	-104.8314799	9.00
7120.00	56.07	283.36	6921.11	-378.49	907.40	489.31	40.4271268	-104.8317525	9.00
7220.00	64.94	281.57	6970.30	-291.96	926.10	404.40	40.4271781	-104.8320575	9.00
7320.00	73.82	280.02	7005.48	-198.69	943.58	312.55	40.4272261	-104.8323874	9.00
7420.00	82.71	278.61	7025.80	-100.97	959.39	216.03	40.4272695	-104.8327341	9.00
7502.03	90.01	277.50	7031.00	-19.19	970.86	135.03	40.4273010	-104.8330250	9.00
7520.00	90.01	277.50	7031.00	-1.22	973.20	117.21	40.4273074	-104.8330890	0.00
7620.00	90.01	277.50	7030.98	98.78	986.25	18.07	40.4273433	-104.8334451	0.00
7720.00	90.01	277.50	7030.95	198.77	999.31	-81.08	40.4273791	-104.8338012	0.00

GREELEY-ROTHE_FEDERAL_12N-2C-L_PWP__REV-A.0_.las

7820.00	90.01	277.50	7030.93	298.76	1012.36	-180.22	40.4274149	-104.8341573	0.00
7920.00	90.01	277.50	7030.91	398.75	1025.41	-279.37	40.4274507	-104.8345134	0.00
7977.03	90.01	277.50	7030.90	455.78	1032.86	-335.91	40.4274712	-104.8347165	0.00
8020.00	90.01	276.64	7030.89	498.75	1038.15	-378.55	40.4274857	-104.8348697	2.00
8120.00	90.01	274.64	7030.87	598.72	1047.97	-478.06	40.4275127	-104.8352271	2.00
8220.00	90.01	272.64	7030.85	698.57	1054.32	-577.86	40.4275301	-104.8355856	2.00
8294.53	90.01	271.15	7030.83	772.82	1056.79	-652.34	40.4275368	-104.8358531	2.00
8320.00	90.01	271.15	7030.83	798.17	1057.30	-677.81	40.4275383	-104.8359446	0.00
8420.00	90.01	271.15	7030.81	897.68	1059.31	-777.79	40.4275438	-104.8363037	0.00
8520.00	90.01	271.15	7030.79	997.20	1061.31	-877.77	40.4275493	-104.8366628	0.00
8620.00	90.01	271.15	7030.77	1096.71	1063.32	-977.75	40.4275548	-104.8370219	0.00
8720.00	90.01	271.15	7030.74	1196.23	1065.33	-1077.73	40.4275602	-104.8373810	0.00
8820.00	90.01	271.15	7030.72	1295.74	1067.33	-1177.71	40.4275657	-104.8377401	0.00
8920.00	90.01	271.15	7030.70	1395.26	1069.34	-1277.69	40.4275712	-104.8380993	0.00
9020.00	90.01	271.15	7030.68	1494.77	1071.35	-1377.67	40.4275767	-104.8384584	0.00
9120.00	90.01	271.15	7030.66	1594.29	1073.35	-1477.65	40.4275822	-104.8388175	0.00
9220.00	90.01	271.15	7030.64	1693.80	1075.36	-1577.63	40.4275877	-104.8391766	0.00
9320.00	90.01	271.15	7030.62	1793.32	1077.37	-1677.61	40.4275932	-104.8395357	0.00
9420.00	90.01	271.15	7030.60	1892.83	1079.38	-1777.59	40.4275987	-104.8398948	0.00
9520.00	90.01	271.15	7030.58	1992.35	1081.38	-1877.57	40.4276042	-104.8402539	0.00
9620.00	90.01	271.15	7030.56	2091.86	1083.39	-1977.55	40.4276097	-104.8406130	0.00
9720.00	90.01	271.15	7030.54	2191.38	1085.40	-2077.53	40.4276152	-104.8409722	0.00
9820.00	90.01	271.15	7030.51	2290.89	1087.40	-2177.51	40.4276206	-104.8413313	0.00
9920.00	90.01	271.15	7030.49	2390.41	1089.41	-2277.49	40.4276261	-104.8416904	0.00
10020.00	90.01	271.15	7030.47	2489.92	1091.42	-2377.47	40.4276316	-104.8420495	0.00
10120.00	90.01	271.15	7030.45	2589.43	1093.42	-2477.45	40.4276371	-104.8424086	0.00
10220.00	90.01	271.15	7030.43	2688.95	1095.43	-2577.42	40.4276426	-104.8427677	0.00
10320.00	90.01	271.15	7030.41	2788.46	1097.44	-2677.40	40.4276481	-104.8431268	0.00
10420.00	90.01	271.15	7030.39	2887.98	1099.45	-2777.38	40.4276535	-104.8434859	0.00
10520.00	90.01	271.15	7030.37	2987.49	1101.45	-2877.36	40.4276590	-104.8438451	0.00
10620.00	90.01	271.15	7030.35	3087.01	1103.46	-2977.34	40.4276645	-104.8442042	0.00
10720.00	90.01	271.15	7030.33	3186.52	1105.47	-3077.32	40.4276700	-104.8445633	0.00
10820.00	90.01	271.15	7030.31	3286.04	1107.47	-3177.30	40.4276754	-104.8449224	0.00
10920.00	90.01	271.15	7030.28	3385.55	1109.48	-3277.28	40.4276809	-104.8452815	0.00

GREELEY-ROTHE_FEDERAL_12N-2C-L_PWP__REV-A.0_.las

11020.00	90.01	271.15	7030.26	3485.07	1111.49	-3377.26	40.4276864	-104.8456406	0.00
11120.00	90.01	271.15	7030.24	3584.58	1113.49	-3477.24	40.4276919	-104.8459997	0.00
11220.00	90.01	271.15	7030.22	3684.10	1115.50	-3577.22	40.4276973	-104.8463589	0.00
11320.00	90.01	271.15	7030.20	3783.61	1117.51	-3677.20	40.4277028	-104.8467180	0.00
11420.00	90.01	271.15	7030.18	3883.13	1119.52	-3777.18	40.4277083	-104.8470771	0.00
11520.00	90.01	271.15	7030.16	3982.64	1121.52	-3877.16	40.4277137	-104.8474362	0.00
11620.00	90.01	271.15	7030.14	4082.16	1123.53	-3977.14	40.4277192	-104.8477953	0.00
11720.00	90.01	271.15	7030.12	4181.67	1125.54	-4077.12	40.4277247	-104.8481544	0.00
11820.00	90.01	271.15	7030.10	4281.19	1127.54	-4177.10	40.4277301	-104.8485135	0.00
11920.00	90.01	271.15	7030.07	4380.70	1129.55	-4277.08	40.4277356	-104.8488727	0.00
12020.00	90.01	271.15	7030.05	4480.22	1131.56	-4377.06	40.4277410	-104.8492318	0.00
12120.00	90.01	271.15	7030.03	4579.73	1133.56	-4477.04	40.4277465	-104.8495909	0.00
12220.00	90.01	271.15	7030.01	4679.25	1135.57	-4577.02	40.4277520	-104.8499500	0.00
12320.00	90.01	271.15	7029.99	4778.76	1137.58	-4677.00	40.4277574	-104.8503091	0.00
12420.00	90.01	271.15	7029.97	4878.27	1139.59	-4776.98	40.4277629	-104.8506682	0.00
12520.00	90.01	271.15	7029.95	4977.79	1141.59	-4876.96	40.4277683	-104.8510273	0.00
12620.00	90.01	271.15	7029.93	5077.30	1143.60	-4976.94	40.4277738	-104.8513865	0.00
12720.00	90.01	271.15	7029.91	5176.82	1145.61	-5076.92	40.4277792	-104.8517456	0.00
12820.00	90.01	271.15	7029.89	5276.33	1147.61	-5176.90	40.4277847	-104.8521047	0.00
12920.00	90.01	271.15	7029.87	5375.85	1149.62	-5276.88	40.4277901	-104.8524638	0.00
13020.00	90.01	271.15	7029.84	5475.36	1151.63	-5376.86	40.4277956	-104.8528229	0.00
13120.00	90.01	271.15	7029.82	5574.88	1153.63	-5476.84	40.4278010	-104.8531820	0.00
13220.00	90.01	271.15	7029.80	5674.39	1155.64	-5576.82	40.4278065	-104.8535411	0.00
13320.00	90.01	271.15	7029.78	5773.91	1157.65	-5676.80	40.4278119	-104.8539003	0.00
13420.00	90.01	271.15	7029.76	5873.42	1159.66	-5776.78	40.4278174	-104.8542594	0.00
13520.00	90.01	271.15	7029.74	5972.94	1161.66	-5876.76	40.4278228	-104.8546185	0.00
13620.00	90.01	271.15	7029.72	6072.45	1163.67	-5976.74	40.4278283	-104.8549776	0.00
13720.00	90.01	271.15	7029.70	6171.97	1165.68	-6076.72	40.4278337	-104.8553367	0.00
13820.00	90.01	271.15	7029.68	6271.48	1167.68	-6176.70	40.4278391	-104.8556958	0.00
13920.00	90.01	271.15	7029.66	6371.00	1169.69	-6276.68	40.4278446	-104.8560550	0.00
14020.00	90.01	271.15	7029.63	6470.51	1171.70	-6376.66	40.4278500	-104.8564141	0.00
14120.00	90.01	271.15	7029.61	6570.03	1173.70	-6476.64	40.4278555	-104.8567732	0.00
14220.00	90.01	271.15	7029.59	6669.54	1175.71	-6576.62	40.4278609	-104.8571323	0.00
14320.00	90.01	271.15	7029.57	6769.06	1177.72	-6676.60	40.4278663	-104.8574914	0.00

GREELEY-ROTHE_FEDERAL_12N-2C-L_PWP__REV-A.0_.las

14420.00	90.01	271.15	7029.55	6868.57	1179.73	-6776.58	40.4278718	-104.8578505	0.00
14520.00	90.01	271.15	7029.53	6968.09	1181.73	-6876.56	40.4278772	-104.8582097	0.00
14620.00	90.01	271.15	7029.51	7067.60	1183.74	-6976.54	40.4278826	-104.8585688	0.00
14720.00	90.01	271.15	7029.49	7167.11	1185.75	-7076.52	40.4278881	-104.8589279	0.00
14820.00	90.01	271.15	7029.47	7266.63	1187.75	-7176.50	40.4278935	-104.8592870	0.00
14920.00	90.01	271.15	7029.45	7366.14	1189.76	-7276.48	40.4278989	-104.8596461	0.00
15020.00	90.01	271.15	7029.43	7465.66	1191.77	-7376.46	40.4279044	-104.8600052	0.00
15120.00	90.01	271.15	7029.40	7565.17	1193.77	-7476.44	40.4279098	-104.8603643	0.00
15220.00	90.01	271.15	7029.38	7664.69	1195.78	-7576.42	40.4279152	-104.8607235	0.00
15320.00	90.01	271.15	7029.36	7764.20	1197.79	-7676.40	40.4279206	-104.8610826	0.00
15420.00	90.01	271.15	7029.34	7863.72	1199.80	-7776.38	40.4279261	-104.8614417	0.00
15520.00	90.01	271.15	7029.32	7963.23	1201.80	-7876.36	40.4279315	-104.8618008	0.00
15620.00	90.01	271.15	7029.30	8062.75	1203.81	-7976.34	40.4279369	-104.8621599	0.00
15720.00	90.01	271.15	7029.28	8162.26	1205.82	-8076.32	40.4279423	-104.8625190	0.00
15820.00	90.01	271.15	7029.26	8261.78	1207.82	-8176.30	40.4279477	-104.8628782	0.00
15920.00	90.01	271.15	7029.24	8361.29	1209.83	-8276.28	40.4279532	-104.8632373	0.00
16020.00	90.01	271.15	7029.22	8460.81	1211.84	-8376.26	40.4279586	-104.8635964	0.00
16120.00	90.01	271.15	7029.19	8560.32	1213.84	-8476.24	40.4279640	-104.8639555	0.00
16220.00	90.01	271.15	7029.17	8659.84	1215.85	-8576.22	40.4279694	-104.8643146	0.00
16320.00	90.01	271.15	7029.15	8759.35	1217.86	-8676.20	40.4279748	-104.8646737	0.00
16394.53	90.01	271.15	7029.14	8833.52	1219.35	-8750.71	40.4279788	-104.8649414	0.00
16420.00	90.01	270.64	7029.13	8858.85	1219.75	-8776.18	40.4279799	-104.8650329	2.00
16520.00	90.01	268.64	7029.11	8958.07	1219.12	-8876.17	40.4279781	-104.8653920	2.00
16620.00	90.01	266.64	7029.09	9056.79	1215.01	-8976.08	40.4279667	-104.8657509	2.00
16720.00	90.01	264.64	7029.07	9154.90	1207.41	-9075.79	40.4279457	-104.8661090	2.00
16820.00	90.01	262.64	7029.06	9252.27	1196.33	-9175.17	40.4279152	-104.8664660	2.00
16920.00	90.01	260.64	7029.04	9348.78	1181.79	-9274.10	40.4278752	-104.8668213	2.00
16920.63	90.01	260.63	7029.04	9349.39	1181.69	-9274.72	40.4278749	-104.8668235	2.00
17020.00	90.01	260.63	7029.03	9444.83	1165.51	-9372.76	40.4278304	-104.8671757	0.00
17120.00	90.01	260.63	7029.01	9540.87	1149.23	-9471.43	40.4277856	-104.8675300	0.00
17192.80	90.01	260.63	7029.00	9610.79	1137.37	-9543.26	40.4277530	-104.8677880	0.00



Planned Wellpath Report

GREELEY-ROTHER FEDERAL 12N-2C-L PWP (REV-A.0)

Page 1 of 9



REFERENCE WELLPATH IDENTIFICATION

Operator	SRC ENERGY	Slot	SLOT#15 GREELEY-ROTHER FEDERAL 12N-2C-L (1123'FSL & 294'FEL, SEC.01)
Area	COLORADO	Well	GREELEY-ROTHER FEDERAL 12N-2C-L
Field	WELD COUNTY (NAD83,TRUE NORTH)	Wellbore	GREELEY-ROTHER FEDERAL 12N-2C-L PWB
Facility	SEC.01-T05N-R67W		

REPORT SETUP INFORMATION

Projection System	NAD83 / Lambert Colorado SP, Northern Zone (501), US feet	Software System	WellArchitect® 5.0
North Reference	True	User	Doddanna
Scale	0.999961	Report Generated	10/4/2017 at 1:49:56 PM
Convergence at slot	0.43° East	Database/Source file	WellArchitectDB/GREELEY-ROTHER FEDERAL 12N-2C-L PWP__REV-A.0_.xml

WELLPATH LOCATION

	Local coordinates		Grid coordinates		Geographic coordinates	
	North[ft]	East[ft]	Easting[US ft]	Northing[US ft]	Latitude	Longitude
Slot Location	-1244.84	0.31	3185555.16	1398232.60	40°25'28.690"N	104°50'00.636"W
Facility Reference Pt			3185545.50	1399477.36	40°25'40.991"N	104°50'00.640"W
Field Reference Pt			3171284.48	1426358.81	40°30'07.643"N	104°53'02.634"W

WELLPATH DATUM

Calculation method	Minimum curvature	PRECISION 462 (20') (RKB) to Facility Vertical Datum	4891.00ft
Horizontal Reference Pt	Slot	PRECISION 462 (20') (RKB) to Mean Sea Level	4891.00ft
Vertical Reference Pt	PRECISION 462 (20') (RKB)	PRECISION 462 (20') (RKB) to Mud Line at Slot (SLOT#15 GREELEY-ROTHER FEDERAL 12N-2C-L (1123'FSL & 294'FEL, SEC.01))	4891.00ft
MD Reference Pt	PRECISION 462 (20') (RKB)	Section Origin	N 0.00, E 0.00 ft
Field Vertical Reference	Mean Sea Level	Section Azimuth	276.80°



Planned Wellpath Report

GREELEY-ROTHER FEDERAL 12N-2C-L PWP (REV-A.0)

Page 2 of 9



REFERENCE WELLPATH IDENTIFICATION			
Operator	SRC ENERGY	Slot	SLOT#15 GREELEY-ROTHER FEDERAL 12N-2C-L (1123'FSL & 294'FEL, SEC.01)
Area	COLORADO	Well	GREELEY-ROTHER FEDERAL 12N-2C-L
Field	WELD COUNTY (NAD83,TRUE NORTH)	Wellbore	GREELEY-ROTHER FEDERAL 12N-2C-L PWB
Facility	SEC.01-T05N-R67W		

WELLPATH DATA (182 stations) † = interpolated/extrapolated station								
MD [ft]	Inclination [°]	Azimuth [°]	TVD [ft]	Vert Sect [ft]	North [ft]	East [ft]	DLS [°/100ft]	Comments
0.00†	0.000	43.709	0.00	0.00	0.00	0.00	0.00	
20.00	0.000	43.709	20.00	0.00	0.00	0.00	0.00	Tie On
120.00†	0.000	43.709	120.00	0.00	0.00	0.00	0.00	
220.00†	0.000	43.709	220.00	0.00	0.00	0.00	0.00	
300.00	0.000	43.709	300.00	0.00	0.00	0.00	0.00	End of Tangent
320.00†	0.400	43.709	320.00	-0.04	0.05	0.05	2.00	
420.00†	2.400	43.709	419.96	-1.51	1.82	1.74	2.00	
520.00†	4.400	43.709	519.78	-5.07	6.10	5.83	2.00	
620.00†	6.400	43.709	619.33	-10.72	12.91	12.34	2.00	
720.00†	8.400	43.709	718.50	-18.46	22.22	21.24	2.00	
820.00†	10.400	43.709	817.15	-28.27	34.02	32.52	2.00	
832.15	10.643	43.709	829.10	-29.60	35.62	34.05	2.00	End of Build
920.00†	10.643	43.709	915.43	-39.34	47.35	45.27	0.00	
1020.00†	10.643	43.709	1013.71	-50.44	60.70	58.03	0.00	
1120.00†	10.643	43.709	1111.99	-61.53	74.05	70.79	0.00	
1220.00†	10.643	43.709	1210.27	-72.62	87.40	83.55	0.00	
1320.00†	10.643	43.709	1308.55	-83.71	100.75	96.31	0.00	
1420.00†	10.643	43.709	1406.83	-94.81	114.11	109.08	0.00	
1520.00†	10.643	43.709	1505.11	-105.90	127.46	121.84	0.00	
1620.00†	10.643	43.709	1603.39	-116.99	140.81	134.60	0.00	
1720.00†	10.643	43.709	1701.67	-128.08	154.16	147.36	0.00	
1820.00†	10.643	43.709	1799.95	-139.18	167.51	160.12	0.00	
1920.00†	10.643	43.709	1898.23	-150.27	180.86	172.89	0.00	
2020.00†	10.643	43.709	1996.51	-161.36	194.21	185.65	0.00	
2120.00†	10.643	43.709	2094.79	-172.45	207.56	198.41	0.00	
2220.00†	10.643	43.709	2193.07	-183.54	220.91	211.17	0.00	
2320.00†	10.643	43.709	2291.35	-194.64	234.26	223.93	0.00	
2420.00†	10.643	43.709	2389.63	-205.73	247.61	236.70	0.00	
2520.00†	10.643	43.709	2487.91	-216.82	260.96	249.46	0.00	
2620.00†	10.643	43.709	2586.19	-227.91	274.31	262.22	0.00	



Planned Wellpath Report

GREELEY-ROTHER FEDERAL 12N-2C-L PWP (REV-A.0)

Page 3 of 9



REFERENCE WELLPATH IDENTIFICATION			
Operator	SRC ENERGY	Slot	SLOT#15 GREELEY-ROTHER FEDERAL 12N-2C-L (1123'FSL & 294'FEL, SEC.01)
Area	COLORADO	Well	GREELEY-ROTHER FEDERAL 12N-2C-L
Field	WELD COUNTY (NAD83,TRUE NORTH)	Wellbore	GREELEY-ROTHER FEDERAL 12N-2C-L PWB
Facility	SEC.01-T05N-R67W		

WELLPATH DATA (182 stations) † = interpolated/extrapolated station

MD [ft]	Inclination [°]	Azimuth [°]	TVD [ft]	Vert Sect [ft]	North [ft]	East [ft]	DLS [°/100ft]	Comments
2720.00†	10.643	43.709	2684.47	-239.01	287.66	274.98	0.00	
2820.00†	10.643	43.709	2782.75	-250.10	301.01	287.74	0.00	
2920.00†	10.643	43.709	2881.03	-261.19	314.36	300.51	0.00	
3020.00†	10.643	43.709	2979.31	-272.28	327.71	313.27	0.00	
3120.00†	10.643	43.709	3077.59	-283.38	341.06	326.03	0.00	
3220.00†	10.643	43.709	3175.87	-294.47	354.41	338.79	0.00	
3320.00†	10.643	43.709	3274.15	-305.56	367.76	351.55	0.00	
3420.00†	10.643	43.709	3372.43	-316.65	381.11	364.32	0.00	
3520.00†	10.643	43.709	3470.71	-327.75	394.47	377.08	0.00	
3620.00†	10.643	43.709	3568.99	-338.84	407.82	389.84	0.00	
3720.00†	10.643	43.709	3667.26	-349.93	421.17	402.60	0.00	
3820.00†	10.643	43.709	3765.54	-361.02	434.52	415.36	0.00	
3920.00†	10.643	43.709	3863.82	-372.12	447.87	428.13	0.00	
4020.00†	10.643	43.709	3962.10	-383.21	461.22	440.89	0.00	
4120.00†	10.643	43.709	4060.38	-394.30	474.57	453.65	0.00	
4220.00†	10.643	43.709	4158.66	-405.39	487.92	466.41	0.00	
4320.00†	10.643	43.709	4256.94	-416.48	501.27	479.17	0.00	
4420.00†	10.643	43.709	4355.22	-427.58	514.62	491.94	0.00	
4520.00†	10.643	43.709	4453.50	-438.67	527.97	504.70	0.00	
4620.00†	10.643	43.709	4551.78	-449.76	541.32	517.46	0.00	
4720.00†	10.643	43.709	4650.06	-460.85	554.67	530.22	0.00	
4820.00†	10.643	43.709	4748.34	-471.95	568.02	542.98	0.00	
4920.00†	10.643	43.709	4846.62	-483.04	581.37	555.75	0.00	
5020.00†	10.643	43.709	4944.90	-494.13	594.72	568.51	0.00	
5120.00†	10.643	43.709	5043.18	-505.22	608.07	581.27	0.00	
5220.00†	10.643	43.709	5141.46	-516.32	621.42	594.03	0.00	
5320.00†	10.643	43.709	5239.74	-527.41	634.77	606.79	0.00	
5420.00†	10.643	43.709	5338.02	-538.50	648.12	619.56	0.00	
5520.00†	10.643	43.709	5436.30	-549.59	661.47	632.32	0.00	
5620.00†	10.643	43.709	5534.58	-560.69	674.83	645.08	0.00	



Planned Wellpath Report

GREELEY-ROTHER FEDERAL 12N-2C-L PWP (REV-A.0)

Page 4 of 9



REFERENCE WELLPATH IDENTIFICATION			
Operator	SRC ENERGY	Slot	SLOT#15 GREELEY-ROTHER FEDERAL 12N-2C-L (1123'FSL & 294'FEL, SEC.01)
Area	COLORADO	Well	GREELEY-ROTHER FEDERAL 12N-2C-L
Field	WELD COUNTY (NAD83,TRUE NORTH)	Wellbore	GREELEY-ROTHER FEDERAL 12N-2C-L PWB
Facility	SEC.01-T05N-R67W		

WELLPATH DATA (182 stations) † = interpolated/extrapolated station								
MD [ft]	Inclination [°]	Azimuth [°]	TVD [ft]	Vert Sect [ft]	North [ft]	East [ft]	DLS [°/100ft]	Comments
5720.00†	10.643	43.709	5632.86	-571.78	688.18	657.84	0.00	
5820.00†	10.643	43.709	5731.14	-582.87	701.53	670.60	0.00	
5920.00†	10.643	43.709	5829.42	-593.96	714.88	683.37	0.00	
6020.00†	10.643	43.709	5927.70	-605.06	728.23	696.13	0.00	
6120.00†	10.643	43.709	6025.98	-616.15	741.58	708.89	0.00	
6220.00†	10.643	43.709	6124.26	-627.24	754.93	721.65	0.00	
6320.00†	10.643	43.709	6222.54	-638.33	768.28	734.41	0.00	
6420.00†	10.643	43.709	6320.82	-649.42	781.63	747.18	0.00	
6432.30	10.643	43.709	6332.91	-650.79	783.27	748.75	0.00	End of Tangent
6520.00†	8.774	356.757	6419.47	-654.49	795.82	753.97	9.00	
6620.00†	13.656	316.120	6517.68	-644.01	811.98	745.34	9.00	
6720.00†	21.371	300.301	6613.02	-618.12	829.72	721.38	9.00	
6820.00†	29.794	292.859	6703.16	-577.45	848.60	682.67	9.00	
6920.00†	38.462	288.507	6785.87	-523.01	868.16	630.18	9.00	
7020.00†	47.238	285.563	6859.12	-456.14	887.92	565.19	9.00	
7120.00†	56.071	283.356	6921.11	-378.49	907.40	489.31	9.00	
7220.00†	64.936	281.568	6970.30	-291.96	926.10	404.40	9.00	
7320.00†	73.820	280.023	7005.48	-198.69	943.58	312.55	9.00	
7420.00†	82.713	278.613	7025.80	-100.97	959.39	216.03	9.00	
7502.03	90.012	277.500	7031.00 [†]	-19.19	970.86	135.03	9.00	End of 3D Arc
7520.00†	90.012	277.500	7031.00	-1.22	973.20	117.21	0.00	
7620.00†	90.012	277.500	7030.98	98.78	986.25	18.07	0.00	
7720.00†	90.012	277.500	7030.95	198.77	999.31	-81.08	0.00	
7820.00†	90.012	277.500	7030.93	298.76	1012.36	-180.22	0.00	
7920.00†	90.012	277.500	7030.91	398.75	1025.41	-279.37	0.00	
7977.03	90.012	277.500	7030.90	455.78	1032.86	-335.91	0.00	End of Tangent
8020.00†	90.012	276.641	7030.89	498.75	1038.15	-378.55	2.00	
8120.00†	90.012	274.641	7030.87	598.72	1047.97	-478.06	2.00	
8220.00†	90.012	272.641	7030.85	698.57	1054.32	-577.86	2.00	
8294.53	90.012	271.150	7030.83	772.82	1056.79	-652.34	2.00	End of 3D Arc



Planned Wellpath Report

GREELEY-ROTHER FEDERAL 12N-2C-L PWP (REV-A.0)

Page 5 of 9



REFERENCE WELLPATH IDENTIFICATION			
Operator	SRC ENERGY	Slot	SLOT#15 GREELEY-ROTHER FEDERAL 12N-2C-L (1123'FSL & 294'FEL, SEC.01)
Area	COLORADO	Well	GREELEY-ROTHER FEDERAL 12N-2C-L
Field	WELD COUNTY (NAD83,TRUE NORTH)	Wellbore	GREELEY-ROTHER FEDERAL 12N-2C-L PWB
Facility	SEC.01-T05N-R67W		

WELLPATH DATA (182 stations) † = interpolated/extrapolated station

MD [ft]	Inclination [°]	Azimuth [°]	TVD [ft]	Vert Sect [ft]	North [ft]	East [ft]	DLS [°/100ft]	Comments
8320.00†	90.012	271.150	7030.83	798.17	1057.30	-677.81	0.00	
8420.00†	90.012	271.150	7030.81	897.68	1059.31	-777.79	0.00	
8520.00†	90.012	271.150	7030.79	997.20	1061.31	-877.77	0.00	
8620.00†	90.012	271.150	7030.77	1096.71	1063.32	-977.75	0.00	
8720.00†	90.012	271.150	7030.74	1196.23	1065.33	-1077.73	0.00	
8820.00†	90.012	271.150	7030.72	1295.74	1067.33	-1177.71	0.00	
8920.00†	90.012	271.150	7030.70	1395.26	1069.34	-1277.69	0.00	
9020.00†	90.012	271.150	7030.68	1494.77	1071.35	-1377.67	0.00	
9120.00†	90.012	271.150	7030.66	1594.29	1073.35	-1477.65	0.00	
9220.00†	90.012	271.150	7030.64	1693.80	1075.36	-1577.63	0.00	
9320.00†	90.012	271.150	7030.62	1793.32	1077.37	-1677.61	0.00	
9420.00†	90.012	271.150	7030.60	1892.83	1079.38	-1777.59	0.00	
9520.00†	90.012	271.150	7030.58	1992.35	1081.38	-1877.57	0.00	
9620.00†	90.012	271.150	7030.56	2091.86	1083.39	-1977.55	0.00	
9720.00†	90.012	271.150	7030.54	2191.38	1085.40	-2077.53	0.00	
9820.00†	90.012	271.150	7030.51	2290.89	1087.40	-2177.51	0.00	
9920.00†	90.012	271.150	7030.49	2390.41	1089.41	-2277.49	0.00	
10020.00†	90.012	271.150	7030.47	2489.92	1091.42	-2377.47	0.00	
10120.00†	90.012	271.150	7030.45	2589.43	1093.42	-2477.45	0.00	
10220.00†	90.012	271.150	7030.43	2688.95	1095.43	-2577.42	0.00	
10320.00†	90.012	271.150	7030.41	2788.46	1097.44	-2677.40	0.00	
10420.00†	90.012	271.150	7030.39	2887.98	1099.45	-2777.38	0.00	
10520.00†	90.012	271.150	7030.37	2987.49	1101.45	-2877.36	0.00	
10620.00†	90.012	271.150	7030.35	3087.01	1103.46	-2977.34	0.00	
10720.00†	90.012	271.150	7030.33	3186.52	1105.47	-3077.32	0.00	
10820.00†	90.012	271.150	7030.31	3286.04	1107.47	-3177.30	0.00	
10920.00†	90.012	271.150	7030.28	3385.55	1109.48	-3277.28	0.00	
11020.00†	90.012	271.150	7030.26	3485.07	1111.49	-3377.26	0.00	
11120.00†	90.012	271.150	7030.24	3584.58	1113.49	-3477.24	0.00	
11220.00†	90.012	271.150	7030.22	3684.10	1115.50	-3577.22	0.00	



Planned Wellpath Report

GREELEY-ROTHER FEDERAL 12N-2C-L PWP (REV-A.0)

Page 6 of 9



REFERENCE WELLPATH IDENTIFICATION			
Operator	SRC ENERGY	Slot	SLOT#15 GREELEY-ROTHER FEDERAL 12N-2C-L (1123'FSL & 294'FEL, SEC.01)
Area	COLORADO	Well	GREELEY-ROTHER FEDERAL 12N-2C-L
Field	WELD COUNTY (NAD83,TRUE NORTH)	Wellbore	GREELEY-ROTHER FEDERAL 12N-2C-L PWB
Facility	SEC.01-T05N-R67W		

WELLPATH DATA (182 stations) † = interpolated/extrapolated station

MD [ft]	Inclination [°]	Azimuth [°]	TVD [ft]	Vert Sect [ft]	North [ft]	East [ft]	DLS [°/100ft]	Comments
11320.00†	90.012	271.150	7030.20	3783.61	1117.51	-3677.20	0.00	
11420.00†	90.012	271.150	7030.18	3883.13	1119.52	-3777.18	0.00	
11520.00†	90.012	271.150	7030.16	3982.64	1121.52	-3877.16	0.00	
11620.00†	90.012	271.150	7030.14	4082.16	1123.53	-3977.14	0.00	
11720.00†	90.012	271.150	7030.12	4181.67	1125.54	-4077.12	0.00	
11820.00†	90.012	271.150	7030.10	4281.19	1127.54	-4177.10	0.00	
11920.00†	90.012	271.150	7030.07	4380.70	1129.55	-4277.08	0.00	
12020.00†	90.012	271.150	7030.05	4480.22	1131.56	-4377.06	0.00	
12120.00†	90.012	271.150	7030.03	4579.73	1133.56	-4477.04	0.00	
12220.00†	90.012	271.150	7030.01	4679.25	1135.57	-4577.02	0.00	
12320.00†	90.012	271.150	7029.99	4778.76	1137.58	-4677.00	0.00	
12420.00†	90.012	271.150	7029.97	4878.27	1139.59	-4776.98	0.00	
12520.00†	90.012	271.150	7029.95	4977.79	1141.59	-4876.96	0.00	
12620.00†	90.012	271.150	7029.93	5077.30	1143.60	-4976.94	0.00	
12720.00†	90.012	271.150	7029.91	5176.82	1145.61	-5076.92	0.00	
12820.00†	90.012	271.150	7029.89	5276.33	1147.61	-5176.90	0.00	
12920.00†	90.012	271.150	7029.87	5375.85	1149.62	-5276.88	0.00	
13020.00†	90.012	271.150	7029.84	5475.36	1151.63	-5376.86	0.00	
13120.00†	90.012	271.150	7029.82	5574.88	1153.63	-5476.84	0.00	
13220.00†	90.012	271.150	7029.80	5674.39	1155.64	-5576.82	0.00	
13320.00†	90.012	271.150	7029.78	5773.91	1157.65	-5676.80	0.00	
13420.00†	90.012	271.150	7029.76	5873.42	1159.66	-5776.78	0.00	
13520.00†	90.012	271.150	7029.74	5972.94	1161.66	-5876.76	0.00	
13620.00†	90.012	271.150	7029.72	6072.45	1163.67	-5976.74	0.00	
13720.00†	90.012	271.150	7029.70	6171.97	1165.68	-6076.72	0.00	
13820.00†	90.012	271.150	7029.68	6271.48	1167.68	-6176.70	0.00	
13920.00†	90.012	271.150	7029.66	6371.00	1169.69	-6276.68	0.00	
14020.00†	90.012	271.150	7029.63	6470.51	1171.70	-6376.66	0.00	
14120.00†	90.012	271.150	7029.61	6570.03	1173.70	-6476.64	0.00	
14220.00†	90.012	271.150	7029.59	6669.54	1175.71	-6576.62	0.00	



Planned Wellpath Report

GREELEY-ROTHER FEDERAL 12N-2C-L PWP (REV-A.0)

Page 7 of 9



REFERENCE WELLPATH IDENTIFICATION			
Operator	SRC ENERGY	Slot	SLOT#15 GREELEY-ROTHER FEDERAL 12N-2C-L (1123'FSL & 294'FEL, SEC.01)
Area	COLORADO	Well	GREELEY-ROTHER FEDERAL 12N-2C-L
Field	WELD COUNTY (NAD83,TRUE NORTH)	Wellbore	GREELEY-ROTHER FEDERAL 12N-2C-L PWB
Facility	SEC.01-T05N-R67W		

WELLPATH DATA (182 stations) † = interpolated/extrapolated station								
MD [ft]	Inclination [°]	Azimuth [°]	TVD [ft]	Vert Sect [ft]	North [ft]	East [ft]	DLS [°/100ft]	Comments
14320.00†	90.012	271.150	7029.57	6769.06	1177.72	-6676.60	0.00	
14420.00†	90.012	271.150	7029.55	6868.57	1179.73	-6776.58	0.00	
14520.00†	90.012	271.150	7029.53	6968.09	1181.73	-6876.56	0.00	
14620.00†	90.012	271.150	7029.51	7067.60	1183.74	-6976.54	0.00	
14720.00†	90.012	271.150	7029.49	7167.11	1185.75	-7076.52	0.00	
14820.00†	90.012	271.150	7029.47	7266.63	1187.75	-7176.50	0.00	
14920.00†	90.012	271.150	7029.45	7366.14	1189.76	-7276.48	0.00	
15020.00†	90.012	271.150	7029.43	7465.66	1191.77	-7376.46	0.00	
15120.00†	90.012	271.150	7029.40	7565.17	1193.77	-7476.44	0.00	
15220.00†	90.012	271.150	7029.38	7664.69	1195.78	-7576.42	0.00	
15320.00†	90.012	271.150	7029.36	7764.20	1197.79	-7676.40	0.00	
15420.00†	90.012	271.150	7029.34	7863.72	1199.80	-7776.38	0.00	
15520.00†	90.012	271.150	7029.32	7963.23	1201.80	-7876.36	0.00	
15620.00†	90.012	271.150	7029.30	8062.75	1203.81	-7976.34	0.00	
15720.00†	90.012	271.150	7029.28	8162.26	1205.82	-8076.32	0.00	
15820.00†	90.012	271.150	7029.26	8261.78	1207.82	-8176.30	0.00	
15920.00†	90.012	271.150	7029.24	8361.29	1209.83	-8276.28	0.00	
16020.00†	90.012	271.150	7029.22	8460.81	1211.84	-8376.26	0.00	
16120.00†	90.012	271.150	7029.19	8560.32	1213.84	-8476.24	0.00	
16220.00†	90.012	271.150	7029.17	8659.84	1215.85	-8576.22	0.00	
16320.00†	90.012	271.150	7029.15	8759.35	1217.86	-8676.20	0.00	
16394.53	90.012	271.150	7029.14	8833.52	1219.35	-8750.71	0.00	End of Tangent
16420.00†	90.012	270.641	7029.13	8858.85	1219.75	-8776.18	2.00	
16520.00†	90.011	268.641	7029.11	8958.07	1219.12	-8876.17	2.00	
16620.00†	90.011	266.641	7029.09	9056.79	1215.01	-8976.08	2.00	
16720.00†	90.010	264.641	7029.07	9154.90	1207.41	-9075.79	2.00	
16820.00†	90.009	262.641	7029.06	9252.27	1196.33	-9175.17	2.00	
16920.00†	90.009	260.641	7029.04	9348.78	1181.79	-9274.10	2.00	
16920.63	90.009	260.628	7029.04	9349.39	1181.69	-9274.72	2.00	End of 3D Arc
17020.00†	90.009	260.628	7029.03	9444.83	1165.51	-9372.76	0.00	



Planned Wellpath Report

GREELEY-ROTHER FEDERAL 12N-2C-L PWP (REV-A.0)

Page 8 of 9



REFERENCE WELLPATH IDENTIFICATION			
Operator	SRC ENERGY	Slot	SLOT#15 GREELEY-ROTHER FEDERAL 12N-2C-L (1123'FSL & 294'FEL, SEC.01)
Area	COLORADO	Well	GREELEY-ROTHER FEDERAL 12N-2C-L
Field	WELD COUNTY (NAD83,TRUE NORTH)	Wellbore	GREELEY-ROTHER FEDERAL 12N-2C-L PWB
Facility	SEC.01-T05N-R67W		

WELLPATH DATA (182 stations) † = interpolated/extrapolated station								
MD [ft]	Inclination [°]	Azimuth [°]	TVD [ft]	Vert Sect [ft]	North [ft]	East [ft]	DLS [°/100ft]	Comments
17120.00†	90.009	260.628	7029.01	9540.87	1149.23	-9471.43	0.00	
17192.80	90.009	260.628	7029.00 ²	9610.79	1137.37	-9543.26	0.00	End of Tangent

HOLE & CASING SECTIONS									
- Ref Wellbore: GREELEY-ROTHER FEDERAL 12N-2C-L PWB					Ref Wellpath: GREELEY-ROTHER FEDERAL 12N-2C-L PWP (REV-A.0)				
String/Diameter	Start MD [ft]	End MD [ft]	Interval [ft]	Start TVD [ft]	End TVD [ft]	Start N/S [ft]	Start E/W [ft]	End N/S [ft]	End E/W [ft]
13.5in Open Hole	20.00	1750.00	1730.00	20.00	1731.16	0.00	0.00	158.16	151.19
9.625in Casing Surface	20.00	1750.00	1730.00	20.00	1731.16	0.00	0.00	158.16	151.19
8.5in Open Hole	1750.00	17192.80	15442.80	1731.16	7029.00	158.16	151.19	1137.37	-9543.26

TARGETS									
Name	MD [ft]	TVD [ft]	North [ft]	East [ft]	Grid East [US ft]	Grid North [US ft]	Latitude	Longitude	Shape
SEC.01-T05N-R67W		21.00	1244.84	-0.31	3185545.50	1399477.36	40°25'40.991"N	104°50'00.640"W	polygon
SEC.02-T05N-R67W		21.00	1244.84	-0.31	3185545.50	1399477.36	40°25'40.991"N	104°50'00.640"W	polygon
2) GREELEY ROTH FEDERAL 12N-2C-L BHL ON PLAT (2356'FSL & 150'FWL, SEC.02)	17192.80	7029.00	1137.37	-9543.26	3176004.02	1399298.17	40°25'39.911"N	104°52'04.037"W	circle
1) GREELEY ROTH FEDERAL 12N-2C-L TOP OF PROD ON PLAT (2088'FSL &150'FEL, SEC.01)	7502.03	7031.00	970.86	135.03	3185682.89	1399204.41	40°25'38.284"N	104°49'58.890"W	circle



Planned Wellpath Report

GREELEY-ROTHER FEDERAL 12N-2C-L PWP (REV-A.0)

Page 9 of 9



REFERENCE WELLPATH IDENTIFICATION			
Operator	SRC ENERGY	Slot	SLOT#15 GREELEY-ROTHER FEDERAL 12N-2C-L (1123'FSL & 294'FEL, SEC.01)
Area	COLORADO	Well	GREELEY-ROTHER FEDERAL 12N-2C-L
Field	WELD COUNTY (NAD83,TRUE NORTH)	Wellbore	GREELEY-ROTHER FEDERAL 12N-2C-L PWB
Facility	SEC.01-T05N-R67W		

SURVEY PROGRAM -				
Ref Wellbore: GREELEY-ROTHER FEDERAL 12N-2C-L PWB Ref Wellpath: GREELEY-ROTHER FEDERAL 12N-2C-L PWP (REV-A.0)				
Start MD [ft]	End MD [ft]	Positional Uncertainty Model	Log Name/Comment	Wellbore
20.00	1750.00	Custom BHI NaviTrak (Standard Rotating+Axial Corr) (Rockies 0.03Gt model)		GREELEY-ROTHER FEDERAL 12N-2C-L PWB
1750.00	17192.80	Custom BHI AutoTrak Curve (IFR1, Short) (Rockies 0.03Gt model)		GREELEY-ROTHER FEDERAL 12N-2C-L PWB