

SRC ENERGY

Location: COLORADO Slot: SLOT#16 GREELEY-ROTHER FEDERAL 12N-2A-L (1103'FSL & 294'FEL, SEC.01)
Field: WELD COUNTY (NAD83, TRUE NORTH) Well: GREELEY-ROTHER FEDERAL 12N-2A-L
Facility: SEC.01-T05N-R67W Wellbore: GREELEY-ROTHER FEDERAL 12N-2A-L PWB

Pilot reference wellpath is GREELEY-ROTHER FEDERAL 12N-2A-L PWB (REV-A.0)	Grid System: NAD83 / Lambert Colorado SP, Northern Zone (501), US feet
True vertical depths are referenced to PRECISION 462 (20) (RKB)	* = Wellpath was transformed from a different geodetic datum
Measured depths are referenced to PRECISION 462 (20) (RKB)	North Reference: True north
PRECISION 462 (20) (RKB) to Mean Sea Level: 4892 feet	Scale: True distance
Mean Sea Level to Mud line (At Slot: SLOT#16 GREELEY-ROTHER FEDERAL 12N-2A-L (1103'FSL & 294'FEL, SEC.01)): 0 feet	Depths are in feet
Coordinates are in feet referenced to Slot	Created by: doddiana on 2017-10-04
	Database: WellArcheoIDB

Location Information

Facility Name			Grid East (US ft)	Grid North (US ft)	Latitude	Longitude
SEC.01-T05N-R67W			3185545.499	1399477.355	40°25'40.991"N	104°50'00.640"W
Slot	Local N (ft)	Local E (ft)	Grid East (US ft)	Grid North (US ft)	Latitude	Longitude
SLOT#16 GREELEY-ROTHER FEDERAL 12N-2A-L (1103'FSL & 294'FEL, SEC.01)	-1264.88	0.62	3185555.624	1399212.570	40°25'28.492"N	104°50'00.632"W
PRECISION 462 (20) (RKB) to Mud line (At Slot: SLOT#16 GREELEY-ROTHER FEDERAL 12N-2A-L (1103'FSL & 294'FEL, SEC.01))					4892ft	
Mean Sea Level to Mud line (At Slot: SLOT#16 GREELEY-ROTHER FEDERAL 12N-2A-L (1103'FSL & 294'FEL, SEC.01))					0ft	
PRECISION 462 (20) (RKB) to Mean Sea Level					4892ft	

Survey Program

Start MD (ft)	End MD (ft)	Tool	Model	Log Name/Comment	Wellbore
20.00	1750.00	BHI NavTrak	Custom BHI NavTrak (Standard Rotating+Axeal Conn) (Rockies 0.03Gr model)		GREELEY-ROTHER FEDERAL 12N-2A-L PWB
1750.00	17063.18	BHI AutoTrak Curve	Custom BHI AutoTrak Curve (FR1, Short) (Rockies 0.03Gr model)		GREELEY-ROTHER FEDERAL 12N-2A-L PWB

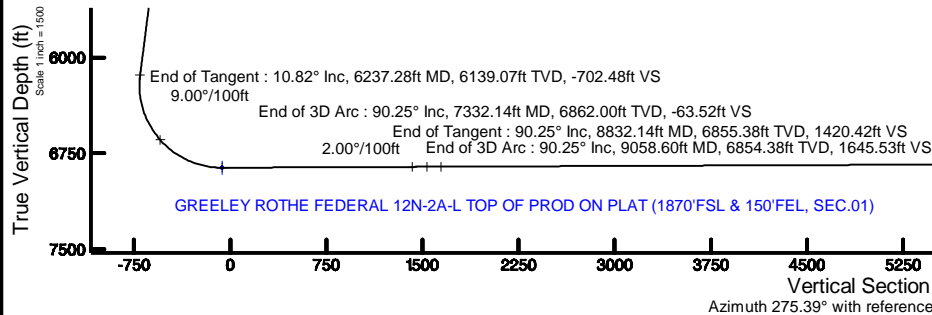


SRC ENERGY



BGGM (1900.0 to 2018.0) Dip: 66.87° Field: 52416.1 nT
Magnetic North is 8.39 degrees East of True North (at 9/22/2017)

To correct azimuth from Magnetic to True add 8.39 degrees



Targets

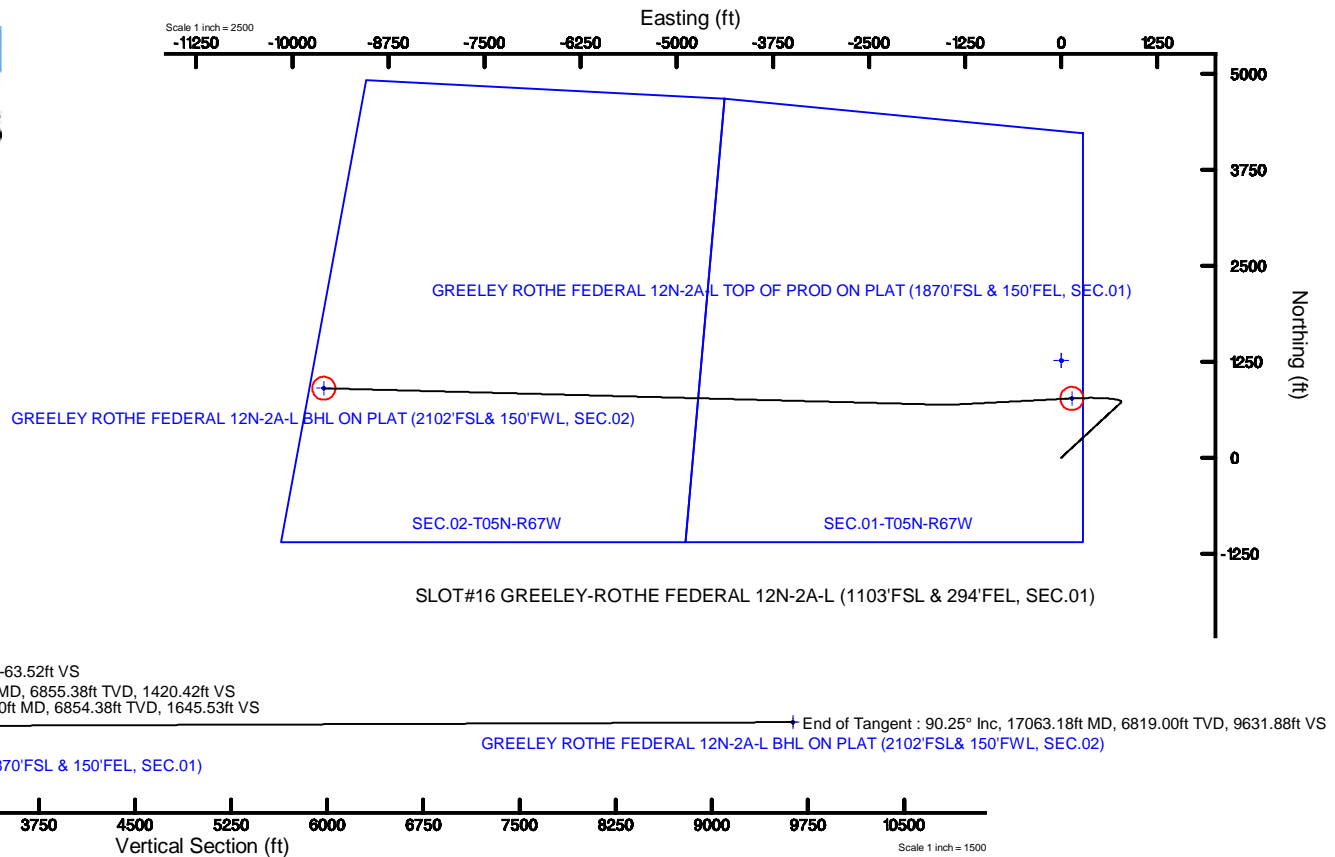
Name	MD (ft)	TVD (ft)	Local N (ft)	Local E (ft)	Grid East (US ft)	Grid North (US ft)	Latitude	Longitude
SEC.01-T05N-R67W		22.00	1264.88	-0.62	3185545.50	1399477.36	40°25'40.991"N	104°50'00.640"W
SEC.02-T05N-R67W		22.00	1264.88	-0.62	3185545.50	1399477.36	40°25'40.991"N	104°50'00.640"W
GREELEY ROTHER FEDERAL 12N-2A-L BHL ON PLAT (2102'FSL & 150'FWL, SEC.02)	17063.18	6819.00	904.55	-9589.31	3175960.18	1399044.99	40°25'37.412"N	104°50'04.627"W
GREELEY ROTHER FEDERAL 12N-2A-L TOP OF PROD ON PLAT (1870'FSL & 150'FEL, SEC.01)	7332.14	6862.00	772.35	136.65	3185986.46	1398985.89	40°25'36.124"N	104°49'58.865"W

Hole and Casing Sections

Name	Start MD (ft)	End MD (ft)	Interval (ft)	Start TVD (ft)	End TVD (ft)	Start Local N (ft)	Start Local E (ft)	End Local N (ft)	End Local E (ft)	Wellbore
13.5in Open Hole	20.00	1750.00	1730.00	20.00	1731.53	0.00	0.00	144.22	155.58	GREELEY-ROTHER FEDERAL 12N-2A-L PWB
9.625in Casing Surface	20.00	1750.00	1730.00	20.00	1731.53	0.00	0.00	144.22	155.58	GREELEY-ROTHER FEDERAL 12N-2A-L PWB
8.5in Open Hole	1750.00	17063.18	15313.18	1731.53	6819.00	144.22	155.58	904.55	-9589.30	GREELEY-ROTHER FEDERAL 12N-2A-L PWB

Well Profile Data

Design Comment	MD (ft)	Inc (°)	Az (°)	TVD (ft)	Local N (ft)	Local E (ft)	DLS (°/100ft)	VS (ft)
Tie On	20.00	0.000	47.171	20.00	0.00	0.00	0.00	0.00
End of Tangent	350.00	0.000	47.171	350.00	0.00	0.00	0.00	0.00
End of Build	890.85	10.817	47.171	887.64	34.60	37.33	2.00	-33.92
End of Tangent	6237.28	10.817	47.171	6139.07	716.71	773.20	0.00	-702.48
End of 3D Arc	7332.14	90.253	267.000	6862.00	772.35	136.65	9.00	-63.52
End of Tangent	8832.14	90.253	267.000	6855.38	693.84	-1361.28	0.00	1420.42
End of 3D Arc	9058.60	90.253	271.529	6854.38	690.94	-1587.65	2.00	1645.53
End of Tangent	17063.18	90.253	271.529	6819.00	904.55	-9589.31	0.00	9631.88



GREELEY-ROTHE_FEDERAL_12N-2A-L_PWP__REV-A.0_.las

~VERSION INFORMATION

VERS. 2.0 : CWLS LOG ASCII STANDARD-VERSION 2.0

WRAP. NO : ASCII DATA SECTION CONTAINS ONE ROW PER WELLPATH STATION

~WELL INFORMATION

#MNEM	.UNITS	DATA	:DESCRIPTION
#----	.-----	----	:-----
STRT	.ft	0.00	:START MD
STOP	.ft	17063.18	:STOP MD
STEP	.ft	0.0	:STEP (non-uniform increment)
NULL	.	-999.99	:NULL
COMP	.	SRC ENERGY	:OPERATOR
WELL	.	GREELEY-ROTHE FEDERAL 12N-2A-L	:WELL
FLD	.	WELD COUNTY (NAD83,TRUE NORTH)	:FIELD
LOC	.	COLORADO	:AREA (aka: Location)
CNTY	.	N/A	:COUNTY
STAT	.	N/A	:STATE
CTRY	.	N/A	:COUNTRY
SRVC	.	Baker Hughes	:CONTRACTOR
DATE	.	10/04/2017	:LOG REV DATE
API	.		:API NUMBER

~OTHER INFORMATION

#Software: WellArchitect(R) Version 5.0

#MNEM	.UNITS	DATA	:DESCRIPTION
#----	.-----	----	:-----
WPTYPE	.	PLANNED WELLPATH	:WELLPATH TYPE
FACILITY	.	SEC.01-T05N-R67W	:FACILITY
SLOT	.	SLOT#16 GREELEY-ROTHE FEDERAL 12N-2A-L (1103'FSL & 294'FEL, SEC.01)	:SLOT
WELLBORE	.	GREELEY-ROTHE FEDERAL 12N-2A-L PWB	:WELLBORE
WELLPATH	.	GREELEY-ROTHE FEDERAL 12N-2A-L PWP (REV-A.0)	:WELLPATH
MDREFPT	.	PRECISION 462 (20') (RKB)	:MD REFERENCE POINT
TVDREFPT	.	PRECISION 462 (20') (RKB)	:TVD REFERENCE POINT
LCLREFPT	.	Slot	:LOCAL COORDINATE REFERENCE PT

GREELEY-ROTHE_FEDERAL_12N-2A-L_PWP__REV-A.0_.las

VSAZIMUTH.deg 275.39 :VERTICAL SECTION AZIMUTH
 VSORIGN .ft 0.00 :VERTICAL SECTION ORIGIN NORTH
 VSORIGE .ft 0.00 :VERTICAL SECTION ORIGIN EAST

~CURVE (WELLPATH) INFORMATION

#MNEM .UNITS :DESCRIPTION
 #---- .----- :-----
 DEPT .ft :MEASURED DEPTH
 INC .deg :INCLINATION
 AZI .deg :AZIMUTH
 TVD .ft :TRUE VERTICAL DEPTH
 SECT .ft :CROSS SECTION (CURTAIN/VERTICAL)
 LOCALN .ft :LOCAL NORTH
 LOCALE .ft :LOCAL EAST
 LAT .deg :LATITUDE
 LONG .deg :LONGITUDE
 DLS .deg/100ft :DOGLEG SEVERITY

~ASCII DATA

0.00	0.00	47.17	0.00	0.00	0.00	0.00	40.4245811	-104.8335089	0.00
20.00	0.00	47.17	20.00	0.00	0.00	0.00	40.4245811	-104.8335089	0.00
120.00	0.00	47.17	120.00	0.00	0.00	0.00	40.4245811	-104.8335089	0.00
220.00	0.00	47.17	220.00	0.00	0.00	0.00	40.4245811	-104.8335089	0.00
320.00	0.00	47.17	320.00	0.00	0.00	0.00	40.4245811	-104.8335089	0.00
350.00	0.00	47.17	350.00	0.00	0.00	0.00	40.4245811	-104.8335089	0.00
420.00	1.40	47.17	419.99	-0.57	0.58	0.63	40.4245827	-104.8335066	2.00
520.00	3.40	47.17	519.90	-3.36	3.43	3.70	40.4245905	-104.8334956	2.00
620.00	5.40	47.17	619.60	-8.47	8.64	9.32	40.4246048	-104.8334754	2.00
720.00	7.40	47.17	718.97	-15.90	16.22	17.50	40.4246256	-104.8334460	2.00
820.00	9.40	47.17	817.89	-25.63	26.15	28.21	40.4246529	-104.8334076	2.00
890.85	10.82	47.17	887.64	-33.92	34.60	37.33	40.4246761	-104.8333748	2.00
920.00	10.82	47.17	916.27	-37.56	38.32	41.34	40.4246863	-104.8333604	0.00
1020.00	10.82	47.17	1014.50	-50.07	51.08	55.11	40.4247213	-104.8333110	0.00
1120.00	10.82	47.17	1112.72	-62.57	63.84	68.87	40.4247563	-104.8332615	0.00

GREELEY-ROTHE_FEDERAL_12N-2A-L_PWP__REV-A.0_.las

1220.00	10.82	47.17	1210.94	-75.08	76.60	82.63	40.4247914	-104.8332121	0.00
1320.00	10.82	47.17	1309.17	-87.58	89.36	96.40	40.4248264	-104.8331627	0.00
1420.00	10.82	47.17	1407.39	-100.09	102.11	110.16	40.4248614	-104.8331132	0.00
1520.00	10.82	47.17	1505.61	-112.59	114.87	123.93	40.4248964	-104.8330638	0.00
1620.00	10.82	47.17	1603.84	-125.10	127.63	137.69	40.4249314	-104.8330143	0.00
1720.00	10.82	47.17	1702.06	-137.60	140.39	151.45	40.4249665	-104.8329649	0.00
1820.00	10.82	47.17	1800.28	-150.10	153.15	165.22	40.4250015	-104.8329155	0.00
1920.00	10.82	47.17	1898.51	-162.61	165.91	178.98	40.4250365	-104.8328660	0.00
2020.00	10.82	47.17	1996.73	-175.11	178.66	192.74	40.4250715	-104.8328166	0.00
2120.00	10.82	47.17	2094.95	-187.62	191.42	206.51	40.4251065	-104.8327672	0.00
2220.00	10.82	47.17	2193.18	-200.12	204.18	220.27	40.4251416	-104.8327177	0.00
2320.00	10.82	47.17	2291.40	-212.63	216.94	234.04	40.4251766	-104.8326683	0.00
2420.00	10.82	47.17	2389.62	-225.13	229.70	247.80	40.4252116	-104.8326189	0.00
2520.00	10.82	47.17	2487.85	-237.64	242.45	261.56	40.4252466	-104.8325694	0.00
2620.00	10.82	47.17	2586.07	-250.14	255.21	275.33	40.4252816	-104.8325200	0.00
2720.00	10.82	47.17	2684.29	-262.65	267.97	289.09	40.4253167	-104.8324706	0.00
2820.00	10.82	47.17	2782.51	-275.15	280.73	302.85	40.4253517	-104.8324211	0.00
2920.00	10.82	47.17	2880.74	-287.66	293.49	316.62	40.4253867	-104.8323717	0.00
3020.00	10.82	47.17	2978.96	-300.16	306.25	330.38	40.4254217	-104.8323222	0.00
3120.00	10.82	47.17	3077.18	-312.67	319.00	344.15	40.4254567	-104.8322728	0.00
3220.00	10.82	47.17	3175.41	-325.17	331.76	357.91	40.4254918	-104.8322234	0.00
3320.00	10.82	47.17	3273.63	-337.68	344.52	371.67	40.4255268	-104.8321739	0.00
3420.00	10.82	47.17	3371.85	-350.18	357.28	385.44	40.4255618	-104.8321245	0.00
3520.00	10.82	47.17	3470.08	-362.69	370.04	399.20	40.4255968	-104.8320751	0.00
3620.00	10.82	47.17	3568.30	-375.19	382.80	412.96	40.4256318	-104.8320256	0.00
3720.00	10.82	47.17	3666.52	-387.70	395.55	426.73	40.4256669	-104.8319762	0.00
3820.00	10.82	47.17	3764.75	-400.20	408.31	440.49	40.4257019	-104.8319268	0.00
3920.00	10.82	47.17	3862.97	-412.71	421.07	454.26	40.4257369	-104.8318773	0.00
4020.00	10.82	47.17	3961.19	-425.21	433.83	468.02	40.4257719	-104.8318279	0.00
4120.00	10.82	47.17	4059.42	-437.71	446.59	481.78	40.4258069	-104.8317784	0.00
4220.00	10.82	47.17	4157.64	-450.22	459.34	495.55	40.4258419	-104.8317290	0.00
4320.00	10.82	47.17	4255.86	-462.72	472.10	509.31	40.4258770	-104.8316796	0.00
4420.00	10.82	47.17	4354.09	-475.23	484.86	523.08	40.4259120	-104.8316301	0.00
4520.00	10.82	47.17	4452.31	-487.73	497.62	536.84	40.4259470	-104.8315807	0.00

GREELEY-ROTHE_FEDERAL_12N-2A-L_PWP__REV-A.0_.las

4620.00	10.82	47.17	4550.53	-500.24	510.38	550.60	40.4259820	-104.8315313	0.00
4720.00	10.82	47.17	4648.75	-512.74	523.14	564.37	40.4260170	-104.8314818	0.00
4820.00	10.82	47.17	4746.98	-525.25	535.89	578.13	40.4260521	-104.8314324	0.00
4920.00	10.82	47.17	4845.20	-537.75	548.65	591.89	40.4260871	-104.8313829	0.00
5020.00	10.82	47.17	4943.42	-550.26	561.41	605.66	40.4261221	-104.8313335	0.00
5120.00	10.82	47.17	5041.65	-562.76	574.17	619.42	40.4261571	-104.8312841	0.00
5220.00	10.82	47.17	5139.87	-575.27	586.93	633.19	40.4261921	-104.8312346	0.00
5320.00	10.82	47.17	5238.09	-587.77	599.68	646.95	40.4262272	-104.8311852	0.00
5420.00	10.82	47.17	5336.32	-600.28	612.44	660.71	40.4262622	-104.8311358	0.00
5520.00	10.82	47.17	5434.54	-612.78	625.20	674.48	40.4262972	-104.8310863	0.00
5620.00	10.82	47.17	5532.76	-625.29	637.96	688.24	40.4263322	-104.8310369	0.00
5720.00	10.82	47.17	5630.99	-637.79	650.72	702.00	40.4263672	-104.8309874	0.00
5820.00	10.82	47.17	5729.21	-650.30	663.48	715.77	40.4264022	-104.8309380	0.00
5920.00	10.82	47.17	5827.43	-662.80	676.23	729.53	40.4264373	-104.8308886	0.00
6020.00	10.82	47.17	5925.66	-675.31	688.99	743.30	40.4264723	-104.8308391	0.00
6120.00	10.82	47.17	6023.88	-687.81	701.75	757.06	40.4265073	-104.8307897	0.00
6220.00	10.82	47.17	6122.10	-700.31	714.51	770.82	40.4265423	-104.8307403	0.00
6237.28	10.82	47.17	6139.07	-702.48	716.71	773.20	40.4265484	-104.8307317	0.00
6320.00	7.03	3.89	6220.86	-707.52	727.06	779.25	40.4265768	-104.8307100	9.00
6420.00	10.73	307.31	6319.82	-699.45	738.83	772.25	40.4266091	-104.8307351	9.00
6520.00	18.49	288.52	6416.56	-676.06	749.52	749.77	40.4266384	-104.8308159	9.00
6620.00	27.01	280.93	6508.72	-637.94	758.88	712.36	40.4266641	-104.8309503	9.00
6720.00	35.76	276.82	6594.01	-586.02	766.68	660.94	40.4266855	-104.8311349	9.00
6820.00	44.60	274.17	6670.34	-521.58	772.71	596.78	40.4267021	-104.8313654	9.00
6920.00	53.48	272.23	6735.84	-446.20	776.83	521.46	40.4267134	-104.8316359	9.00
7020.00	62.39	270.70	6788.88	-361.75	778.95	436.83	40.4267192	-104.8319399	9.00
7120.00	71.31	269.41	6828.16	-270.30	779.00	344.98	40.4267194	-104.8322698	9.00
7220.00	80.24	268.24	6852.71	-174.11	776.99	248.17	40.4267139	-104.8326175	9.00
7320.00	89.17	267.13	6861.94	-75.53	772.97	148.78	40.4267028	-104.8329745	9.00
7332.14	90.25	267.00	6862.00	-63.52	772.35	136.65	40.4267011	-104.8330181	9.00
7420.00	90.25	267.00	6861.61	23.40	767.75	48.92	40.4266885	-104.8333332	0.00
7520.00	90.25	267.00	6861.17	122.33	762.51	-50.94	40.4266741	-104.8336919	0.00
7620.00	90.25	267.00	6860.73	221.26	757.28	-150.80	40.4266598	-104.8340505	0.00
7720.00	90.25	267.00	6860.29	320.18	752.05	-250.67	40.4266454	-104.8344092	0.00

GREELEY-ROTHE_FEDERAL_12N-2A-L_PWP__REV-A.0_.las

7820.00	90.25	267.00	6859.85	419.11	746.81	-350.53	40.4266310	-104.8347679	0.00
7920.00	90.25	267.00	6859.40	518.04	741.58	-450.39	40.4266167	-104.8351266	0.00
8020.00	90.25	267.00	6858.96	616.97	736.35	-550.25	40.4266023	-104.8354853	0.00
8120.00	90.25	267.00	6858.52	715.90	731.11	-650.11	40.4265879	-104.8358440	0.00
8220.00	90.25	267.00	6858.08	814.83	725.88	-749.98	40.4265735	-104.8362026	0.00
8320.00	90.25	267.00	6857.64	913.76	720.65	-849.84	40.4265592	-104.8365613	0.00
8420.00	90.25	267.00	6857.20	1012.69	715.41	-949.70	40.4265448	-104.8369200	0.00
8520.00	90.25	267.00	6856.75	1111.62	710.18	-1049.56	40.4265304	-104.8372787	0.00
8620.00	90.25	267.00	6856.31	1210.55	704.95	-1149.42	40.4265160	-104.8376374	0.00
8720.00	90.25	267.00	6855.87	1309.48	699.71	-1249.29	40.4265017	-104.8379961	0.00
8820.00	90.25	267.00	6855.43	1408.41	694.48	-1349.15	40.4264873	-104.8383547	0.00
8832.14	90.25	267.00	6855.38	1420.42	693.84	-1361.28	40.4264855	-104.8383983	0.00
8920.00	90.25	268.76	6854.99	1507.52	690.59	-1449.07	40.4264766	-104.8387136	2.00
9020.00	90.25	270.76	6854.55	1607.03	690.17	-1549.06	40.4264754	-104.8390728	2.00
9058.60	90.25	271.53	6854.38	1645.53	690.94	-1587.65	40.4264775	-104.8392114	2.00
9120.00	90.25	271.53	6854.10	1706.78	692.58	-1649.03	40.4264820	-104.8394319	0.00
9220.00	90.25	271.53	6853.66	1806.55	695.24	-1748.99	40.4264893	-104.8397909	0.00
9320.00	90.25	271.53	6853.22	1906.33	697.91	-1848.96	40.4264966	-104.8401499	0.00
9420.00	90.25	271.53	6852.78	2006.10	700.58	-1948.92	40.4265039	-104.8405090	0.00
9520.00	90.25	271.53	6852.34	2105.87	703.25	-2048.88	40.4265112	-104.8408680	0.00
9620.00	90.25	271.53	6851.89	2205.64	705.92	-2148.85	40.4265185	-104.8412271	0.00
9720.00	90.25	271.53	6851.45	2305.42	708.59	-2248.81	40.4265258	-104.8415861	0.00
9820.00	90.25	271.53	6851.01	2405.19	711.26	-2348.77	40.4265331	-104.8419452	0.00
9920.00	90.25	271.53	6850.57	2504.96	713.92	-2448.74	40.4265404	-104.8423042	0.00
10020.00	90.25	271.53	6850.13	2604.73	716.59	-2548.70	40.4265477	-104.8426633	0.00
10120.00	90.25	271.53	6849.68	2704.50	719.26	-2648.66	40.4265550	-104.8430223	0.00
10220.00	90.25	271.53	6849.24	2804.28	721.93	-2748.63	40.4265623	-104.8433814	0.00
10320.00	90.25	271.53	6848.80	2904.05	724.60	-2848.59	40.4265696	-104.8437404	0.00
10420.00	90.25	271.53	6848.36	3003.82	727.27	-2948.55	40.4265769	-104.8440995	0.00
10520.00	90.25	271.53	6847.92	3103.59	729.94	-3048.52	40.4265842	-104.8444585	0.00
10620.00	90.25	271.53	6847.48	3203.37	732.60	-3148.48	40.4265915	-104.8448176	0.00
10720.00	90.25	271.53	6847.03	3303.14	735.27	-3248.44	40.4265988	-104.8451766	0.00
10820.00	90.25	271.53	6846.59	3402.91	737.94	-3348.41	40.4266061	-104.8455357	0.00
10920.00	90.25	271.53	6846.15	3502.68	740.61	-3448.37	40.4266133	-104.8458947	0.00

GREELEY-ROTHE_FEDERAL_12N-2A-L_PWP__REV-A.0_.las

11020.00	90.25	271.53	6845.71	3602.45	743.28	-3548.33	40.4266206	-104.8462538	0.00
11120.00	90.25	271.53	6845.27	3702.23	745.95	-3648.30	40.4266279	-104.8466128	0.00
11220.00	90.25	271.53	6844.82	3802.00	748.62	-3748.26	40.4266352	-104.8469719	0.00
11320.00	90.25	271.53	6844.38	3901.77	751.29	-3848.22	40.4266425	-104.8473309	0.00
11420.00	90.25	271.53	6843.94	4001.54	753.95	-3948.19	40.4266498	-104.8476900	0.00
11520.00	90.25	271.53	6843.50	4101.32	756.62	-4048.15	40.4266570	-104.8480490	0.00
11620.00	90.25	271.53	6843.06	4201.09	759.29	-4148.11	40.4266643	-104.8484081	0.00
11720.00	90.25	271.53	6842.61	4300.86	761.96	-4248.08	40.4266716	-104.8487671	0.00
11820.00	90.25	271.53	6842.17	4400.63	764.63	-4348.04	40.4266789	-104.8491262	0.00
11920.00	90.25	271.53	6841.73	4500.41	767.30	-4448.00	40.4266862	-104.8494852	0.00
12020.00	90.25	271.53	6841.29	4600.18	769.97	-4547.97	40.4266934	-104.8498443	0.00
12120.00	90.25	271.53	6840.85	4699.95	772.63	-4647.93	40.4267007	-104.8502033	0.00
12220.00	90.25	271.53	6840.40	4799.72	775.30	-4747.89	40.4267080	-104.8505624	0.00
12320.00	90.25	271.53	6839.96	4899.49	777.97	-4847.86	40.4267152	-104.8509214	0.00
12420.00	90.25	271.53	6839.52	4999.27	780.64	-4947.82	40.4267225	-104.8512805	0.00
12520.00	90.25	271.53	6839.08	5099.04	783.31	-5047.78	40.4267298	-104.8516395	0.00
12620.00	90.25	271.53	6838.64	5198.81	785.98	-5147.75	40.4267371	-104.8519986	0.00
12720.00	90.25	271.53	6838.19	5298.58	788.65	-5247.71	40.4267443	-104.8523576	0.00
12820.00	90.25	271.53	6837.75	5398.36	791.32	-5347.68	40.4267516	-104.8527167	0.00
12920.00	90.25	271.53	6837.31	5498.13	793.98	-5447.64	40.4267589	-104.8530757	0.00
13020.00	90.25	271.53	6836.87	5597.90	796.65	-5547.60	40.4267661	-104.8534348	0.00
13120.00	90.25	271.53	6836.43	5697.67	799.32	-5647.57	40.4267734	-104.8537938	0.00
13220.00	90.25	271.53	6835.98	5797.44	801.99	-5747.53	40.4267806	-104.8541529	0.00
13320.00	90.25	271.53	6835.54	5897.22	804.66	-5847.49	40.4267879	-104.8545119	0.00
13420.00	90.25	271.53	6835.10	5996.99	807.33	-5947.46	40.4267952	-104.8548710	0.00
13520.00	90.25	271.53	6834.66	6096.76	810.00	-6047.42	40.4268024	-104.8552300	0.00
13620.00	90.25	271.53	6834.22	6196.53	812.66	-6147.38	40.4268097	-104.8555891	0.00
13720.00	90.25	271.53	6833.77	6296.31	815.33	-6247.35	40.4268169	-104.8559481	0.00
13820.00	90.25	271.53	6833.33	6396.08	818.00	-6347.31	40.4268242	-104.8563072	0.00
13920.00	90.25	271.53	6832.89	6495.85	820.67	-6447.27	40.4268314	-104.8566662	0.00
14020.00	90.25	271.53	6832.45	6595.62	823.34	-6547.24	40.4268387	-104.8570253	0.00
14120.00	90.25	271.53	6832.01	6695.39	826.01	-6647.20	40.4268460	-104.8573844	0.00
14220.00	90.25	271.53	6831.57	6795.17	828.68	-6747.16	40.4268532	-104.8577434	0.00
14320.00	90.25	271.53	6831.12	6894.94	831.34	-6847.13	40.4268605	-104.8581025	0.00

GREELEY-ROTHE_FEDERAL_12N-2A-L_PWP__REV-A.0_.las

14420.00	90.25	271.53	6830.68	6994.71	834.01	-6947.09	40.4268677	-104.8584615	0.00
14520.00	90.25	271.53	6830.24	7094.48	836.68	-7047.05	40.4268749	-104.8588206	0.00
14620.00	90.25	271.53	6829.80	7194.26	839.35	-7147.02	40.4268822	-104.8591796	0.00
14720.00	90.25	271.53	6829.36	7294.03	842.02	-7246.98	40.4268894	-104.8595387	0.00
14820.00	90.25	271.53	6828.91	7393.80	844.69	-7346.94	40.4268967	-104.8598977	0.00
14920.00	90.25	271.53	6828.47	7493.57	847.36	-7446.91	40.4269039	-104.8602568	0.00
15020.00	90.25	271.53	6828.03	7593.34	850.03	-7546.87	40.4269112	-104.8606158	0.00
15120.00	90.25	271.53	6827.59	7693.12	852.69	-7646.83	40.4269184	-104.8609749	0.00
15220.00	90.25	271.53	6827.15	7792.89	855.36	-7746.80	40.4269256	-104.8613339	0.00
15320.00	90.25	271.53	6826.70	7892.66	858.03	-7846.76	40.4269329	-104.8616930	0.00
15420.00	90.25	271.53	6826.26	7992.43	860.70	-7946.72	40.4269401	-104.8620520	0.00
15520.00	90.25	271.53	6825.82	8092.21	863.37	-8046.69	40.4269474	-104.8624111	0.00
15620.00	90.25	271.53	6825.38	8191.98	866.04	-8146.65	40.4269546	-104.8627701	0.00
15720.00	90.25	271.53	6824.94	8291.75	868.71	-8246.61	40.4269618	-104.8631292	0.00
15820.00	90.25	271.53	6824.49	8391.52	871.37	-8346.58	40.4269691	-104.8634882	0.00
15920.00	90.25	271.53	6824.05	8491.29	874.04	-8446.54	40.4269763	-104.8638473	0.00
16020.00	90.25	271.53	6823.61	8591.07	876.71	-8546.50	40.4269835	-104.8642063	0.00
16120.00	90.25	271.53	6823.17	8690.84	879.38	-8646.47	40.4269908	-104.8645654	0.00
16220.00	90.25	271.53	6822.73	8790.61	882.05	-8746.43	40.4269980	-104.8649245	0.00
16320.00	90.25	271.53	6822.28	8890.38	884.72	-8846.39	40.4270052	-104.8652835	0.00
16420.00	90.25	271.53	6821.84	8990.16	887.39	-8946.36	40.4270124	-104.8656426	0.00
16520.00	90.25	271.53	6821.40	9089.93	890.06	-9046.32	40.4270197	-104.8660016	0.00
16620.00	90.25	271.53	6820.96	9189.70	892.72	-9146.28	40.4270269	-104.8663607	0.00
16720.00	90.25	271.53	6820.52	9289.47	895.39	-9246.25	40.4270341	-104.8667197	0.00
16820.00	90.25	271.53	6820.07	9389.24	898.06	-9346.21	40.4270413	-104.8670788	0.00
16920.00	90.25	271.53	6819.63	9489.02	900.73	-9446.17	40.4270486	-104.8674378	0.00
17020.00	90.25	271.53	6819.19	9588.79	903.40	-9546.14	40.4270558	-104.8677969	0.00
17063.18	90.25	271.53	6819.00	9631.88	904.55	-9589.31	40.4270589	-104.8679519	0.00



Planned Wellpath Report

GREELEY-ROTHER FEDERAL 12N-2A-L PWP (REV-A.0)

Page 1 of 7



REFERENCE WELLPATH IDENTIFICATION

Operator	SRC ENERGY	Slot	SLOT#16 GREELEY-ROTHER FEDERAL 12N-2A-L (1103'FSL & 294'FEL, SEC.01)
Area	COLORADO	Well	GREELEY-ROTHER FEDERAL 12N-2A-L
Field	WELD COUNTY (NAD83,TRUE NORTH)	Wellbore	GREELEY-ROTHER FEDERAL 12N-2A-L PWB
Facility	SEC.01-T05N-R67W		

REPORT SETUP INFORMATION

Projection System	NAD83 / Lambert Colorado SP, Northern Zone (501), US feet	Software System	WellArchitect® 5.0
North Reference	True	User	Doddanna
Scale	0.999961	Report Generated	10/4/2017 at 2:11:21 PM
Convergence at slot	0.43° East	Database/Source file	WellArchitectDB/GREELEY-ROTHER FEDERAL 12N-2A-L PWP__REV-A.0_.xml

WELLPATH LOCATION

	Local coordinates		Grid coordinates		Geographic coordinates	
	North[ft]	East[ft]	Easting[US ft]	Northing[US ft]	Latitude	Longitude
Slot Location	-1264.88	0.62	3185555.62	1398212.57	40°25'28.492"N	104°50'00.632"W
Facility Reference Pt			3185545.50	1399477.36	40°25'40.991"N	104°50'00.640"W
Field Reference Pt			3171284.48	1426358.81	40°30'07.643"N	104°53'02.634"W

WELLPATH DATUM

Calculation method	Minimum curvature	PRECISION 462 (20') (RKB) to Facility Vertical Datum	4892.00ft
Horizontal Reference Pt	Slot	PRECISION 462 (20') (RKB) to Mean Sea Level	4892.00ft
Vertical Reference Pt	PRECISION 462 (20') (RKB)	PRECISION 462 (20') (RKB) to Mud Line at Slot (SLOT#16 GREELEY-ROTHER FEDERAL 12N-2A-L (1103'FSL & 294'FEL, SEC.01))	4892.00ft
MD Reference Pt	PRECISION 462 (20') (RKB)	Section Origin	N 0.00, E 0.00 ft
Field Vertical Reference	Mean Sea Level	Section Azimuth	275.39°



Planned Wellpath Report

GREELEY-ROTHER FEDERAL 12N-2A-L PWP (REV-A.0)

Page 2 of 7



REFERENCE WELLPATH IDENTIFICATION			
Operator	SRC ENERGY	Slot	SLOT#16 GREELEY-ROTHER FEDERAL 12N-2A-L (1103'FSL & 294'FEL, SEC.01)
Area	COLORADO	Well	GREELEY-ROTHER FEDERAL 12N-2A-L
Field	WELD COUNTY (NAD83,TRUE NORTH)	Wellbore	GREELEY-ROTHER FEDERAL 12N-2A-L PWB
Facility	SEC.01-T05N-R67W		

WELLPATH DATA (179 stations) † = interpolated/extrapolated station								
MD [ft]	Inclination [°]	Azimuth [°]	TVD [ft]	Vert Sect [ft]	North [ft]	East [ft]	DLS [°/100ft]	Comments
0.00†	0.000	47.171	0.00	0.00	0.00	0.00	0.00	
20.00	0.000	47.171	20.00	0.00	0.00	0.00	0.00	Tie On
120.00†	0.000	47.171	120.00	0.00	0.00	0.00	0.00	
220.00†	0.000	47.171	220.00	0.00	0.00	0.00	0.00	
320.00†	0.000	47.171	320.00	0.00	0.00	0.00	0.00	
350.00	0.000	47.171	350.00	0.00	0.00	0.00	0.00	End of Tangent
420.00†	1.400	47.171	419.99	-0.57	0.58	0.63	2.00	
520.00†	3.400	47.171	519.90	-3.36	3.43	3.70	2.00	
620.00†	5.400	47.171	619.60	-8.47	8.64	9.32	2.00	
720.00†	7.400	47.171	718.97	-15.90	16.22	17.50	2.00	
820.00†	9.400	47.171	817.89	-25.63	26.15	28.21	2.00	
890.85	10.817	47.171	887.64	-33.92	34.60	37.33	2.00	End of Build
920.00†	10.817	47.171	916.27	-37.56	38.32	41.34	0.00	
1020.00†	10.817	47.171	1014.50	-50.07	51.08	55.11	0.00	
1120.00†	10.817	47.171	1112.72	-62.57	63.84	68.87	0.00	
1220.00†	10.817	47.171	1210.94	-75.08	76.60	82.63	0.00	
1320.00†	10.817	47.171	1309.17	-87.58	89.36	96.40	0.00	
1420.00†	10.817	47.171	1407.39	-100.09	102.11	110.16	0.00	
1520.00†	10.817	47.171	1505.61	-112.59	114.87	123.93	0.00	
1620.00†	10.817	47.171	1603.84	-125.10	127.63	137.69	0.00	
1720.00†	10.817	47.171	1702.06	-137.60	140.39	151.45	0.00	
1820.00†	10.817	47.171	1800.28	-150.10	153.15	165.22	0.00	
1920.00†	10.817	47.171	1898.51	-162.61	165.91	178.98	0.00	
2020.00†	10.817	47.171	1996.73	-175.11	178.66	192.74	0.00	
2120.00†	10.817	47.171	2094.95	-187.62	191.42	206.51	0.00	
2220.00†	10.817	47.171	2193.18	-200.12	204.18	220.27	0.00	
2320.00†	10.817	47.171	2291.40	-212.63	216.94	234.04	0.00	
2420.00†	10.817	47.171	2389.62	-225.13	229.70	247.80	0.00	
2520.00†	10.817	47.171	2487.85	-237.64	242.45	261.56	0.00	
2620.00†	10.817	47.171	2586.07	-250.14	255.21	275.33	0.00	



Planned Wellpath Report

GREELEY-ROTHER FEDERAL 12N-2A-L PWP (REV-A.0)

Page 3 of 7



REFERENCE WELLPATH IDENTIFICATION			
Operator	SRC ENERGY	Slot	SLOT#16 GREELEY-ROTHER FEDERAL 12N-2A-L (1103'FSL & 294'FEL, SEC.01)
Area	COLORADO	Well	GREELEY-ROTHER FEDERAL 12N-2A-L
Field	WELD COUNTY (NAD83,TRUE NORTH)	Wellbore	GREELEY-ROTHER FEDERAL 12N-2A-L PWB
Facility	SEC.01-T05N-R67W		

WELLPATH DATA (179 stations) † = interpolated/extrapolated station

MD [ft]	Inclination [°]	Azimuth [°]	TVD [ft]	Vert Sect [ft]	North [ft]	East [ft]	DLS [°/100ft]	Comments
2720.00†	10.817	47.171	2684.29	-262.65	267.97	289.09	0.00	
2820.00†	10.817	47.171	2782.51	-275.15	280.73	302.85	0.00	
2920.00†	10.817	47.171	2880.74	-287.66	293.49	316.62	0.00	
3020.00†	10.817	47.171	2978.96	-300.16	306.25	330.38	0.00	
3120.00†	10.817	47.171	3077.18	-312.67	319.00	344.15	0.00	
3220.00†	10.817	47.171	3175.41	-325.17	331.76	357.91	0.00	
3320.00†	10.817	47.171	3273.63	-337.68	344.52	371.67	0.00	
3420.00†	10.817	47.171	3371.85	-350.18	357.28	385.44	0.00	
3520.00†	10.817	47.171	3470.08	-362.69	370.04	399.20	0.00	
3620.00†	10.817	47.171	3568.30	-375.19	382.80	412.96	0.00	
3720.00†	10.817	47.171	3666.52	-387.70	395.55	426.73	0.00	
3820.00†	10.817	47.171	3764.75	-400.20	408.31	440.49	0.00	
3920.00†	10.817	47.171	3862.97	-412.71	421.07	454.26	0.00	
4020.00†	10.817	47.171	3961.19	-425.21	433.83	468.02	0.00	
4120.00†	10.817	47.171	4059.42	-437.71	446.59	481.78	0.00	
4220.00†	10.817	47.171	4157.64	-450.22	459.34	495.55	0.00	
4320.00†	10.817	47.171	4255.86	-462.72	472.10	509.31	0.00	
4420.00†	10.817	47.171	4354.09	-475.23	484.86	523.08	0.00	
4520.00†	10.817	47.171	4452.31	-487.73	497.62	536.84	0.00	
4620.00†	10.817	47.171	4550.53	-500.24	510.38	550.60	0.00	
4720.00†	10.817	47.171	4648.75	-512.74	523.14	564.37	0.00	
4820.00†	10.817	47.171	4746.98	-525.25	535.89	578.13	0.00	
4920.00†	10.817	47.171	4845.20	-537.75	548.65	591.89	0.00	
5020.00†	10.817	47.171	4943.42	-550.26	561.41	605.66	0.00	
5120.00†	10.817	47.171	5041.65	-562.76	574.17	619.42	0.00	
5220.00†	10.817	47.171	5139.87	-575.27	586.93	633.19	0.00	
5320.00†	10.817	47.171	5238.09	-587.77	599.68	646.95	0.00	
5420.00†	10.817	47.171	5336.32	-600.28	612.44	660.71	0.00	
5520.00†	10.817	47.171	5434.54	-612.78	625.20	674.48	0.00	
5620.00†	10.817	47.171	5532.76	-625.29	637.96	688.24	0.00	



Planned Wellpath Report

GREELEY-ROTHER FEDERAL 12N-2A-L PWP (REV-A.0)

Page 4 of 7



REFERENCE WELLPATH IDENTIFICATION			
Operator	SRC ENERGY	Slot	SLOT#16 GREELEY-ROTHER FEDERAL 12N-2A-L (1103'FSL & 294'FEL, SEC.01)
Area	COLORADO	Well	GREELEY-ROTHER FEDERAL 12N-2A-L
Field	WELD COUNTY (NAD83,TRUE NORTH)	Wellbore	GREELEY-ROTHER FEDERAL 12N-2A-L PWB
Facility	SEC.01-T05N-R67W		

WELLPATH DATA (179 stations) † = interpolated/extrapolated station								
MD [ft]	Inclination [°]	Azimuth [°]	TVD [ft]	Vert Sect [ft]	North [ft]	East [ft]	DLS [°/100ft]	Comments
5720.00†	10.817	47.171	5630.99	-637.79	650.72	702.00	0.00	
5820.00†	10.817	47.171	5729.21	-650.30	663.48	715.77	0.00	
5920.00†	10.817	47.171	5827.43	-662.80	676.23	729.53	0.00	
6020.00†	10.817	47.171	5925.66	-675.31	688.99	743.30	0.00	
6120.00†	10.817	47.171	6023.88	-687.81	701.75	757.06	0.00	
6220.00†	10.817	47.171	6122.10	-700.31	714.51	770.82	0.00	
6237.28	10.817	47.171	6139.07	-702.48	716.71	773.20	0.00	End of Tangent
6320.00†	7.031	3.894	6220.86	-707.52	727.06	779.25	9.00	
6420.00†	10.725	307.312	6319.82	-699.45	738.83	772.25	9.00	
6520.00†	18.488	288.515	6416.56	-676.06	749.52	749.77	9.00	
6620.00†	27.014	280.929	6508.72	-637.94	758.88	712.36	9.00	
6720.00†	35.761	276.821	6594.01	-586.02	766.68	660.94	9.00	
6820.00†	44.598	274.165	6670.34	-521.58	772.71	596.78	9.00	
6920.00†	53.479	272.234	6735.84	-446.20	776.83	521.46	9.00	
7020.00†	62.386	270.704	6788.88	-361.75	778.95	436.83	9.00	
7120.00†	71.307	269.406	6828.16	-270.30	779.00	344.98	9.00	
7220.00†	80.236	268.239	6852.71	-174.11	776.99	248.17	9.00	
7320.00†	89.168	267.133	6861.94	-75.53	772.97	148.78	9.00	
7332.14	90.253	267.000	6862.00 [†]	-63.52	772.35	136.65	9.00	End of 3D Arc
7420.00†	90.253	267.000	6861.61	23.40	767.75	48.92	0.00	
7520.00†	90.253	267.000	6861.17	122.33	762.51	-50.94	0.00	
7620.00†	90.253	267.000	6860.73	221.26	757.28	-150.80	0.00	
7720.00†	90.253	267.000	6860.29	320.18	752.05	-250.67	0.00	
7820.00†	90.253	267.000	6859.85	419.11	746.81	-350.53	0.00	
7920.00†	90.253	267.000	6859.40	518.04	741.58	-450.39	0.00	
8020.00†	90.253	267.000	6858.96	616.97	736.35	-550.25	0.00	
8120.00†	90.253	267.000	6858.52	715.90	731.11	-650.11	0.00	
8220.00†	90.253	267.000	6858.08	814.83	725.88	-749.98	0.00	
8320.00†	90.253	267.000	6857.64	913.76	720.65	-849.84	0.00	
8420.00†	90.253	267.000	6857.20	1012.69	715.41	-949.70	0.00	



Planned Wellpath Report

GREELEY-ROTHER FEDERAL 12N-2A-L PWP (REV-A.0)

Page 5 of 7



REFERENCE WELLPATH IDENTIFICATION			
Operator	SRC ENERGY	Slot	SLOT#16 GREELEY-ROTHER FEDERAL 12N-2A-L (1103'FSL & 294'FEL, SEC.01)
Area	COLORADO	Well	GREELEY-ROTHER FEDERAL 12N-2A-L
Field	WELD COUNTY (NAD83,TRUE NORTH)	Wellbore	GREELEY-ROTHER FEDERAL 12N-2A-L PWB
Facility	SEC.01-T05N-R67W		

WELLPATH DATA (179 stations) † = interpolated/extrapolated station

MD [ft]	Inclination [°]	Azimuth [°]	TVD [ft]	Vert Sect [ft]	North [ft]	East [ft]	DLS [°/100ft]	Comments
8520.00†	90.253	267.000	6856.75	1111.62	710.18	-1049.56	0.00	
8620.00†	90.253	267.000	6856.31	1210.55	704.95	-1149.42	0.00	
8720.00†	90.253	267.000	6855.87	1309.48	699.71	-1249.29	0.00	
8820.00†	90.253	267.000	6855.43	1408.41	694.48	-1349.15	0.00	
8832.14	90.253	267.000	6855.38	1420.42	693.84	-1361.28	0.00	End of Tangent
8920.00†	90.253	268.757	6854.99	1507.52	690.59	-1449.07	2.00	
9020.00†	90.253	270.757	6854.55	1607.03	690.17	-1549.06	2.00	
9058.60	90.253	271.529	6854.38	1645.53	690.94	-1587.65	2.00	End of 3D Arc
9120.00†	90.253	271.529	6854.10	1706.78	692.58	-1649.03	0.00	
9220.00†	90.253	271.529	6853.66	1806.55	695.24	-1748.99	0.00	
9320.00†	90.253	271.529	6853.22	1906.33	697.91	-1848.96	0.00	
9420.00†	90.253	271.529	6852.78	2006.10	700.58	-1948.92	0.00	
9520.00†	90.253	271.529	6852.34	2105.87	703.25	-2048.88	0.00	
9620.00†	90.253	271.529	6851.89	2205.64	705.92	-2148.85	0.00	
9720.00†	90.253	271.529	6851.45	2305.42	708.59	-2248.81	0.00	
9820.00†	90.253	271.529	6851.01	2405.19	711.26	-2348.77	0.00	
9920.00†	90.253	271.529	6850.57	2504.96	713.92	-2448.74	0.00	
10020.00†	90.253	271.529	6850.13	2604.73	716.59	-2548.70	0.00	
10120.00†	90.253	271.529	6849.68	2704.50	719.26	-2648.66	0.00	
10220.00†	90.253	271.529	6849.24	2804.28	721.93	-2748.63	0.00	
10320.00†	90.253	271.529	6848.80	2904.05	724.60	-2848.59	0.00	
10420.00†	90.253	271.529	6848.36	3003.82	727.27	-2948.55	0.00	
10520.00†	90.253	271.529	6847.92	3103.59	729.94	-3048.52	0.00	
10620.00†	90.253	271.529	6847.48	3203.37	732.60	-3148.48	0.00	
10720.00†	90.253	271.529	6847.03	3303.14	735.27	-3248.44	0.00	
10820.00†	90.253	271.529	6846.59	3402.91	737.94	-3348.41	0.00	
10920.00†	90.253	271.529	6846.15	3502.68	740.61	-3448.37	0.00	
11020.00†	90.253	271.529	6845.71	3602.45	743.28	-3548.33	0.00	
11120.00†	90.253	271.529	6845.27	3702.23	745.95	-3648.30	0.00	
11220.00†	90.253	271.529	6844.82	3802.00	748.62	-3748.26	0.00	



Planned Wellpath Report

GREELEY-ROTHER FEDERAL 12N-2A-L PWP (REV-A.0)

Page 6 of 7



REFERENCE WELLPATH IDENTIFICATION			
Operator	SRC ENERGY	Slot	SLOT#16 GREELEY-ROTHER FEDERAL 12N-2A-L (1103'FSL & 294'FEL, SEC.01)
Area	COLORADO	Well	GREELEY-ROTHER FEDERAL 12N-2A-L
Field	WELD COUNTY (NAD83,TRUE NORTH)	Wellbore	GREELEY-ROTHER FEDERAL 12N-2A-L PWB
Facility	SEC.01-T05N-R67W		

WELLPATH DATA (179 stations) † = interpolated/extrapolated station								
MD [ft]	Inclination [°]	Azimuth [°]	TVD [ft]	Vert Sect [ft]	North [ft]	East [ft]	DLS [°/100ft]	Comments
11320.00†	90.253	271.529	6844.38	3901.77	751.29	-3848.22	0.00	
11420.00†	90.253	271.529	6843.94	4001.54	753.95	-3948.19	0.00	
11520.00†	90.253	271.529	6843.50	4101.32	756.62	-4048.15	0.00	
11620.00†	90.253	271.529	6843.06	4201.09	759.29	-4148.11	0.00	
11720.00†	90.253	271.529	6842.61	4300.86	761.96	-4248.08	0.00	
11820.00†	90.253	271.529	6842.17	4400.63	764.63	-4348.04	0.00	
11920.00†	90.253	271.529	6841.73	4500.41	767.30	-4448.00	0.00	
12020.00†	90.253	271.529	6841.29	4600.18	769.97	-4547.97	0.00	
12120.00†	90.253	271.529	6840.85	4699.95	772.63	-4647.93	0.00	
12220.00†	90.253	271.529	6840.40	4799.72	775.30	-4747.89	0.00	
12320.00†	90.253	271.529	6839.96	4899.49	777.97	-4847.86	0.00	
12420.00†	90.253	271.529	6839.52	4999.27	780.64	-4947.82	0.00	
12520.00†	90.253	271.529	6839.08	5099.04	783.31	-5047.78	0.00	
12620.00†	90.253	271.529	6838.64	5198.81	785.98	-5147.75	0.00	
12720.00†	90.253	271.529	6838.19	5298.58	788.65	-5247.71	0.00	
12820.00†	90.253	271.529	6837.75	5398.36	791.32	-5347.68	0.00	
12920.00†	90.253	271.529	6837.31	5498.13	793.98	-5447.64	0.00	
13020.00†	90.253	271.529	6836.87	5597.90	796.65	-5547.60	0.00	
13120.00†	90.253	271.529	6836.43	5697.67	799.32	-5647.57	0.00	
13220.00†	90.253	271.529	6835.98	5797.44	801.99	-5747.53	0.00	
13320.00†	90.253	271.529	6835.54	5897.22	804.66	-5847.49	0.00	
13420.00†	90.253	271.529	6835.10	5996.99	807.33	-5947.46	0.00	
13520.00†	90.253	271.529	6834.66	6096.76	810.00	-6047.42	0.00	
13620.00†	90.253	271.529	6834.22	6196.53	812.66	-6147.38	0.00	
13720.00†	90.253	271.529	6833.77	6296.31	815.33	-6247.35	0.00	
13820.00†	90.253	271.529	6833.33	6396.08	818.00	-6347.31	0.00	
13920.00†	90.253	271.529	6832.89	6495.85	820.67	-6447.27	0.00	
14020.00†	90.253	271.529	6832.45	6595.62	823.34	-6547.24	0.00	
14120.00†	90.253	271.529	6832.01	6695.39	826.01	-6647.20	0.00	
14220.00†	90.253	271.529	6831.57	6795.17	828.68	-6747.16	0.00	



Planned Wellpath Report

GREELEY-ROTHER FEDERAL 12N-2A-L PWP (REV-A.0)

Page 7 of 7



REFERENCE WELLPATH IDENTIFICATION			
Operator	SRC ENERGY	Slot	SLOT#16 GREELEY-ROTHER FEDERAL 12N-2A-L (1103'FSL & 294'FEL, SEC.01)
Area	COLORADO	Well	GREELEY-ROTHER FEDERAL 12N-2A-L
Field	WELD COUNTY (NAD83,TRUE NORTH)	Wellbore	GREELEY-ROTHER FEDERAL 12N-2A-L PWB
Facility	SEC.01-T05N-R67W		

WELLPATH DATA (179 stations) † = interpolated/extrapolated station

MD [ft]	Inclination [°]	Azimuth [°]	TVD [ft]	Vert Sect [ft]	North [ft]	East [ft]	DLS [°/100ft]	Comments
14320.00†	90.253	271.529	6831.12	6894.94	831.34	-6847.13	0.00	
14420.00†	90.253	271.529	6830.68	6994.71	834.01	-6947.09	0.00	
14520.00†	90.253	271.529	6830.24	7094.48	836.68	-7047.05	0.00	
14620.00†	90.253	271.529	6829.80	7194.26	839.35	-7147.02	0.00	
14720.00†	90.253	271.529	6829.36	7294.03	842.02	-7246.98	0.00	
14820.00†	90.253	271.529	6828.91	7393.80	844.69	-7346.94	0.00	
14920.00†	90.253	271.529	6828.47	7493.57	847.36	-7446.91	0.00	
15020.00†	90.253	271.529	6828.03	7593.34	850.03	-7546.87	0.00	
15120.00†	90.253	271.529	6827.59	7693.12	852.69	-7646.83	0.00	
15220.00†	90.253	271.529	6827.15	7792.89	855.36	-7746.80	0.00	
15320.00†	90.253	271.529	6826.70	7892.66	858.03	-7846.76	0.00	
15420.00†	90.253	271.529	6826.26	7992.43	860.70	-7946.72	0.00	
15520.00†	90.253	271.529	6825.82	8092.21	863.37	-8046.69	0.00	
15620.00†	90.253	271.529	6825.38	8191.98	866.04	-8146.65	0.00	
15720.00†	90.253	271.529	6824.94	8291.75	868.71	-8246.61	0.00	
15820.00†	90.253	271.529	6824.49	8391.52	871.37	-8346.58	0.00	
15920.00†	90.253	271.529	6824.05	8491.29	874.04	-8446.54	0.00	
16020.00†	90.253	271.529	6823.61	8591.07	876.71	-8546.50	0.00	
16120.00†	90.253	271.529	6823.17	8690.84	879.38	-8646.47	0.00	
16220.00†	90.253	271.529	6822.73	8790.61	882.05	-8746.43	0.00	
16320.00†	90.253	271.529	6822.28	8890.38	884.72	-8846.39	0.00	
16420.00†	90.253	271.529	6821.84	8990.16	887.39	-8946.36	0.00	
16520.00†	90.253	271.529	6821.40	9089.93	890.06	-9046.32	0.00	
16620.00†	90.253	271.529	6820.96	9189.70	892.72	-9146.28	0.00	
16720.00†	90.253	271.529	6820.52	9289.47	895.39	-9246.25	0.00	
16820.00†	90.253	271.529	6820.07	9389.24	898.06	-9346.21	0.00	
16920.00†	90.253	271.529	6819.63	9489.02	900.73	-9446.17	0.00	
17020.00†	90.253	271.529	6819.19	9588.79	903.40	-9546.14	0.00	
17063.18	90.253	271.529	6819.00 ²	9631.88	904.55	-9589.31	0.00	End of Tangent

HOLE & CASING SECTIONS									
- Ref Wellbore: GREELEY-ROTHER FEDERAL 12N-2A-L PWB Ref Wellpath: GREELEY-ROTHER FEDERAL 12N-2A-L PWP (REV-A.0)									
String/Diameter	Start MD [ft]	End MD [ft]	Interval [ft]	Start TVD [ft]	End TVD [ft]	Start N/S [ft]	Start E/W [ft]	End N/S [ft]	End E/W [ft]
13.5in Open Hole	20.00	1750.00	1730.00	20.00	1731.53	0.00	0.00	144.22	155.58
9.625in Casing Surface	20.00	1750.00	1730.00	20.00	1731.53	0.00	0.00	144.22	155.58
8.5in Open Hole	1750.00	17063.18	15313.18	1731.53	6819.00	144.22	155.58	904.55	-9589.30

TARGETS									
Name	MD [ft]	TVD [ft]	North [ft]	East [ft]	Grid East [US ft]	Grid North [US ft]	Latitude	Longitude	Shape
SEC.01-T05N-R67W		22.00	1264.88	-0.62	3185545.50	1399477.36	40°25'40.991"N	104°50'00.640"W	polygon
SEC.02-T05N-R67W		22.00	1264.88	-0.62	3185545.50	1399477.36	40°25'40.991"N	104°50'00.640"W	polygon
2) GREELEY ROTHE FEDERAL 12N-2A-L BHL ON PLAT (2102'FSL& 150'FWL, SEC.02)	17063.18	6819.00	904.55	-9589.31	3175960.18	1399044.99	40°25'37.412"N	104°52'04.627"W	circle
1) GREELEY ROTHE FEDERAL 12N-2A-L TOP OF PROD ON PLAT (1870'FSL & 150'FEL, SEC.01)	7332.14	6862.00	772.35	136.65	3185686.46	1398985.89	40°25'36.124"N	104°49'58.865"W	circle

SURVEY PROGRAM -				
Ref Wellbore: GREELEY-ROTHE FEDERAL 12N-2A-L PWB Ref Wellpath: GREELEY-ROTHE FEDERAL 12N-2A-L PWP (REV-A.0)				
Start MD [ft]	End MD [ft]	Positional Uncertainty Model	Log Name/Comment	Wellbore
20.00	1750.00	Custom BHI NaviTrak (Standard Rotating+Axial Corr) (Rockies 0.03Gt model)		GREELEY-ROTHE FEDERAL 12N-2A-L PWB
1750.00	17063.18	Custom BHI AutoTrak Curve (IFR1, Short) (Rockies 0.03Gt model)		GREELEY-ROTHE FEDERAL 12N-2A-L PWB