

HALLIBURTON

iCem[®] Service

EXTRACTION OIL & GAS-EBUS

Date: Monday, October 30, 2017

WALT 16E-20-9C PRODUCTION

Job Date: Tuesday, October 24, 2017

Sincerely,

Julia Nichols

Legal Notice

Disclaimer:

All information in this report is provided subject to the terms and conditions which govern the services provided by Halliburton. Halliburton personnel use their best efforts in gathering information and their best judgment in interpreting it, but any interpretation, research, analysis or recommendation furnished by Halliburton are opinions based upon inferences from measurements and empirical relationships and assumptions, which inferences and empirical relationships and assumptions are not infallible, and with respect to which professionals in the industry may differ. Accordingly, HALLIBURTON IS UNABLE TO GUARANTEE THE ACCURACY OF ANY CHART INTERPRETATION, RESEARCH ANALYSIS, OR JOB RECOMMENDATION and any interpretation or recommendation is not for use of or reliance upon by any third party. The customer has full responsibility for any of its decisions which are based on the information provided in this report.

Table of Contents

1.0 Cementing Job Summary 4

 1.1 Executive Summary4

2.0 Real-Time Job Summary 7

 2.1 Job Event Log7

3.0 Attachments..... 9

 3.1 Custom Results – Job Chart with Events9

 3.2 Custom Results – Job Chart without Events.....10

1.0 Cementing Job Summary

1.1 Executive Summary

Halliburton appreciates the opportunity to perform the cementing services on the **Walt 16E-20-9C** cement **Production** casing job. A pre-job safety meeting was held before the job where details of the job were discussed, potential safety hazards were reviewed, and environmental compliance procedures were outlined.

Approxiamtely 57 barrels of cement were returned to surface.

Halliburton maintains a continuous quality improvement process and appreciates any comments or suggestions that you may have. Halliburton again thanks you for the opportunity to perform service work on this well. We hope to be your solutions provider for future projects.

Respectfully,

Halliburton [Fort Lupton]

HALLIBURTON

Summary Report

Crew: _____
 Job Start Date: 10/24/2017 03:13 AM

Sales Order #: 0904378357
 WO #: 0904378357
 PO #: 817-036
 AFE #:

The Road to Excellence Starts with Safety

Sold To #: 389404	Ship To #: 3819720	Quote #:	Sales Order #: 0904378357							
Customer: EXTRACTION OIL & GAS		Customer Rep: Todd Stephens								
Well Name: WALT	Well #: 16E-20-9C	API/UWI #: 05-123-45243-00								
Field: WATTENBERG	City (SAP): SEVERANCE	County/Parish: WELD	State: COLORADO							
Legal Description: SE NE-17-7N-87W-2017FNL-354FEL										
Contractor: PATTERSON-UTI ENERGY		Rig/Platform Name/Num: PATTERSON 346								
Job BOM: 7523 7523										
Well Type: HORIZONTAL OIL										
Sales Person: HALAMERICA\HX38199		Srv Supervisor: Bryan Kraft								
Job										
Formation Name										
Formation Depth (MD)	Top	Bottom								
Form Type	BHST									
Job depth MD	16648ft	Job Depth TVD	7257ft							
Water Depth		Wk Ht Above Floor	4ft							
Perforation Depth (MD)	From	To								
Well Data										
Description	New / Used	Size in	ID in	Weight lbm/ft	Thread	Grade	Top MD ft	Bottom MD ft	Top TVD ft	Bottom TVD ft
Casing	0	9.625	8.921	36		J-55	0	1571	0	1571
Casing	0	5.5	4.778	20		P-110	0	16648	0	7257
Open Hole Section			8.5				1571	16655	1571	7257
Tools and Accessories										
Type	Size in	Qty	Make	Depth ft	Type	Size in	Qty	Make		
Guide Shoe					Top Plug	5.5	1	klx		
Float Shoe	5.5	1	klx	16648	Bottom Plug					
Float Collar	5.5	1	klx	16643	SSR plug set					
Insert Float					Plug Container	5.5	1	HES		
Stage Tool					Centralizers					
Fluid Data										
Stage/Plug #: 1										
Fluid #	Stage Type	Fluid Name	Qty	Qty UoM	Mixing Density lbm/gal	Yield ft ³ /sack	Mix Fluid Gal	Rate bbl/min	Total Mix Fluid Gal	
1	11.5 lb/gal Tuned Spacer III	Tuned Spacer III	50	bbl	11.5	3.73	23.4	4	1761	
149.34 lbm/bbl		BARITE, BULK (100003681)								
35 gal/bbl		FRESH WATER								
0.50 gal/bbl		MUSOL A, 330 GAL TOTE - (790828)								
0.50 gal/bbl		DUAL SPACER SURFACTANT B, 5 GAL PAIL (100003685)								

last updated on 10/24/2017 9:11:01 AM

Page 1 of 2

iCem® Service

(v. 4.4.18)

HALLIBURTON

Summary Report

Crew: _____
 Job Start Date: 10/24/2017 03:13 AM

Sales Order #: 0904378357
 WO #: 0904378357
 PO #: 817-036
 AFE #:

Fluid #	Stage Type	Fluid Name	Qty	Qty UoM	Mixing Density lbm/gal	Yield ft3/sack	Mix Fluid Gal	Rate bbl/mi n	Total Mix Fluid Gal
2	ElastiCem	ELASTICEM (TM) SYSTEM	2670	sack	13.2	1.57	7.54	8	20132
0.30 %		SCR-100 (100003749)							
7.54 Gal		FRESH WATER							
Fluid #	Stage Type	Fluid Name	Qty	Qty UoM	Mixing Density lbm/gal	Yield ft3/sack	Mix Fluid Gal	Rate bbl/mi n	Total Mix Fluid Gal
3	Displacement	Displacement	369	bbl	8.34			10	15498
Cement Left In Pipe		Amount	0ft	Reason				Wet Shoe Joint	
Mix Water:		pH 7	Mix Water Chloride:		<300 ppm	Mix Water Temperature:		38 °F	
Cement Temperature:		44 °F	Plug Displaced by:		8.3	Disp. Temperature:		38 °F	
Plug Bumped?		Yes	Bump Pressure:		2500 psi	Floats Held?		Yes	
Cement Returns:		57 bbl	Returns Density:		n/a	Returns Temperature:		98 °F	
Comment PLUG BUMPED AT CALCULATED DISPLACEMENT @ 2500: DISK RUPTURED @2700 PSI:PUMPED 5 BBL WET SHOE: FLOATS HELD AND RECEIVED 4 BBL BACK TO THE TRUCK: 57 BBL CEMENT RETURNED TO SURFACE									

2.0 Real-Time Job Summary

2.1 Job Event Log

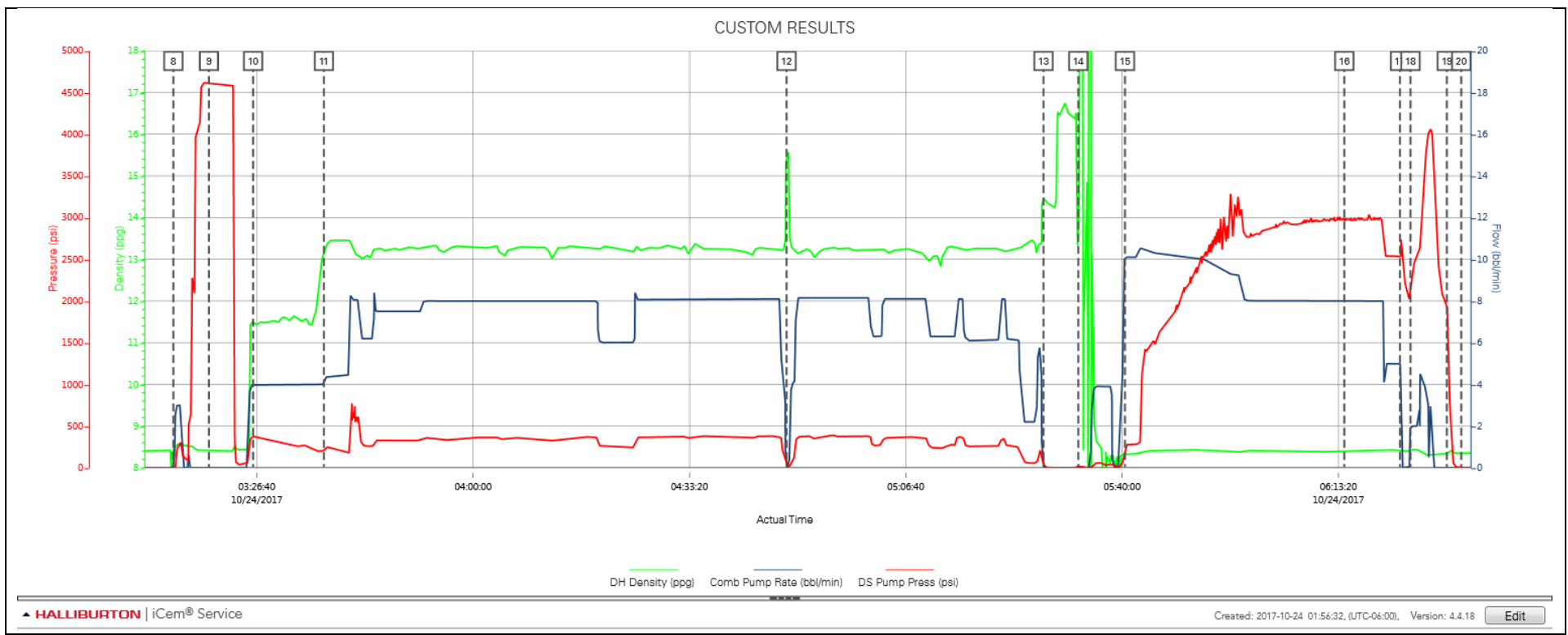
Type	Seq. No.	Activity	Graph Label	Date	Time	Source	DH Density (ppg)	Comb Pump Rate (bbl/min)	DS Pump Press (psi)	Comments
Event	1	Call Out	Call Out	10/23/2017	19:00:00	USER				CREW CALLED OUT AT 19:00 10/24/2017, REQUESTED ON LOCATION 2:30 10/24/2017. CREW PICKED UP SPACER, CHEMICALS (25 GAL MUSOL A, 25 GAL DUAL SPACER B, 10 GAL D-AIR), 100 LBS SUGAR, MANIFOLD, AND PLUG CONTAINER FROM FORT LUPTON, CO. BULK BODYLOAD: 10866493, PUMP ELITE: 11897034/11645460.
Event	2	Pre-Convoy Safety Meeting	Pre-Convoy Safety Meeting	10/23/2017	22:45:00	USER				DISCUSSED ROUTES, HAZARDS, AND COMMUNICATION WITH CREW.
Event	3	Crew Leave Yard	Crew Leave Yard	10/23/2017	23:00:00	USER				STARTED JOURNEY MANAGEMENT.
Event	4	Arrive At Loc	Arrive At Loc	10/24/2017	00:00:00	USER				END JOURNEY MANAGEMENT. MEET WITH CO. MAN TO DISCUSS JOB; SURFACE CASING: 36# 9.625" @ 1571', CASING: 20# 5.5" @ 16648', 5' SHOE JOINT, 8.5" OPEN HOLE, TVD @ 7257', 9.6 PPG WELL FLUID, FRESH WATER DISPLACEMENT.
Event	5	Pre-Rig Up Safety Meeting	Pre-Rig Up Safety Meeting	10/24/2017	01:00:00	USER				HAZARD HUNT. DISCUSSED POSSIBLE HAZARDS ASSOCIATED WITH LOCATION, RIG UP AND WEATHER.
Event	6	Rig-Up Equipment	Rig-Up Equipment	10/24/2017	01:15:00	USER				CREW STAGED EQUIPMENT AND RIGGED UP BULK, IRON, AND WATER HOSES TO PERFORM JOB.
Event	7	Pre-Job Safety Meeting	Pre-Job Safety Meeting	10/24/2017	02:45:00	USER	8.40	0.00	-30.00	MEETING WITH HALLIBURTON AND RIG PERSONNEL. COMMUNICATED POTENTIAL SAFETY HAZARDS AND JOB DETAILS.
Event	8	Start Job	Start Job	10/24/2017	03:13:48	COM5	8.45	0.00	-6.00	BEGIN RECORDING JOB DATA.
Event	9	Test Lines	Test Lines	10/24/2017	03:19:17	COM5	8.42	0.00	4614.00	PRESSURE TESTED IRON TO 4500 PSI. KICKOUTS SET @ 500 PSI, KICKED OUT @ 300 PSI, 5TH GEAR STALL OUT @ 2200 PSI.
Event	10	Pump Spacer 1	Pump Spacer @ 11.5 ppg	10/24/2017	03:26:05	COM5	11.49	4.00	373.00	PUMP 50 BBLS OF TUNED SPACER @ 11.5 LB/GAL, ADDED 25 GAL MUSOL A, 25 GAL DUAL SPACER B, AND 10 GAL D-

AIR, DENSITY VERIFIED BY PRESSURIZED MUD SCALES.

Event	11	Pump Cement	Pump Cement @ 13.2 ppg	10/24/2017	03:36:59	COM5	13.17	4.00	209.00	PUMP 2670 SKS OF ELASTICEM @ 13.2 LB/GAL, 1.57 YIELD, 7.54 GAL/SK, 747 BBLS, TOC @ SURFACE', DENSITY VERIFIED BY PRESSURIZED MUD SCALES.
Event	12	Shutdown	Shutdown	10/24/2017	04:48:17	USER	15.45	0.00	50.00	SHUTDOWN DUE TO LEAKING UNION ON FLOOR. RETIGHTENED UNION AND CONTINUED PUMPING AS SCHEDULED.
Event	13	Shutdown	Shutdown	10/24/2017	05:27:53	USER	14.48	0.00	35.00	SHUTDOWN TO WASH PUMPS AND LINES/ DROP TOP PLUG.
Event	14	Drop Top Plug	Drop Top Plug	10/24/2017	05:33:14	COM5	13.36	0.00	32.00	PLUG LEFT CONTAINER, VERIFIED BY TOOL HAND.
Event	15	Pump Displacement	Pump Fresh Water Displacement	10/24/2017	05:40:26	COM5	8.34	10.10	251.00	BEGIN CALCULATED DISPLACEMENT OF 369 BBLS WITH FRESH WATER.
Event	16	Cement Returns to Surface	Cement Returns to Surface	10/24/2017	06:14:14	USER	8.39	8.00	2943.00	CEMENT TO SURFACE @ 312 BBLS INTO DISPLACEMENT. 57 BBLS OF CEMENT TO SURFACE.
Event	17	Bump Plug	Bump Plug	10/24/2017	06:22:48	USER	8.42	5.00	2553.00	PLUG BUMPED AT CALCULATED DISPLACEMENT @ 2500 PSI. DISK RUPTURED UPON BUMPING PLUG AT 2700PSI
Event	18	Pump Displacement	Pump Wet Shoe	10/24/2017	06:24:26	USER	8.42	2.00	2089.00	PUMP 5 BBLS FRESH WATER FOR WET SHOE.
Event	19	Check Floats	Check Floats	10/24/2017	06:30:02	USER	8.33	0.00	1953.00	RELEASED PRESSURE, FLOATS HELD, 4 BBLS BACK.
Event	20	End Job	End Job	10/24/2017	06:32:15	COM5	8.34	0.00	-3.00	STOP RECORDING JOB DATA
Event	21	Pre-Rig Down Safety Meeting	Pre-Rig Down Safety Meeting	10/24/2017	06:37:00	USER	8.36	5.30	147.00	DISCUSSED POSSIBLE HAZARDS ASSOCIATED WITH WEATHER, LOCATION AND RIGGING DOWN IRON AND HOSES.
Event	22	Rig-Down Completed	Rig-Down Completed	10/24/2017	07:37:00	USER				ALL HALLIBURTON ITEMS WERE STOWED FOR TRAVEL, AND LOCATION WAS CLEAN.
Event	23	Pre-Convoy Safety Meeting	Pre-Convoy Safety Meeting	10/24/2017	08:45:00	USER				DISCUSSED ROUTES HAZARDS AND COMMUNICATION WITH CREW.
Event	24	Crew Leave Location	Crew Leave Location	10/24/2017	09:00:00	USER				THANK YOU FOR USING HALLIBURTON - BRYAN KRAFT AND CREW.

3.0 Attachments

3.1 Custom Results – Job Chart with Events



3.2 Custom Results – Job Chart without Events

