

SRC ENERGY

Location: COLORADO Slot: SLOT#17 GREELEY-ROTHER FEDERAL 12C-2-L (1083FSL & 294FEL, SEC.01)
Field: WELD COUNTY (NAD83, TRUE NORTH) Well: GREELEY-ROTHER FEDERAL 12C-2-L
Facility: SEC.01-T05N-R67W Wellbore: GREELEY-ROTHER FEDERAL 12C-2-L PWB

| | |
|---|--|
| Plot reference wellpath is GREELEY-ROTHER FEDERAL 12C-2-L PWP (REV-A.0) | Grid System: NAD83 / Lambert Colorado SP, Northern Zone (501), US feet |
| True vertical depths are referenced to PRECISION 462 (20) (RKB) | * = Wellpath was transformed from a different geodetic datum |
| Measured depths are referenced to PRECISION 462 (20) (RKB) | North Reference: True north |
| PRECISION 462 (20) (RKB) to Mean Sea Level: 4892 feet | Scale: True distance |
| Mean Sea Level to Mud line (At Slot: SLOT#17 GREELEY-ROTHER FEDERAL 12C-2-L (1083FSL & 294FEL, SEC.01)): 0 feet | Depths are in feet |
| Coordinates are in feet referenced to Slot | Created by: doddanna on 2017-10-04 |
| | Database: WellArchitectDB |

Location Information

| Facility Name | | | Grid East (US ft) | Grid North (US ft) | Latitude | Longitude |
|---|--------------|--------------|-------------------|--------------------|----------------|-----------------|
| SEC.01-T05N-R67W | | | 3185545.499 | 1399477.355 | 40°25'40.991"N | 104°50'00.640"W |
| Slot | Local N (ft) | Local E (ft) | Grid East (US ft) | Grid North (US ft) | Latitude | Longitude |
| SLOT#17 GREELEY-ROTHER FEDERAL 12C-2-L (1083FSL & 294FEL, SEC.01) | -1284.61 | 0.85 | 3185556.004 | 1399182.839 | 40°25'28.297"N | 104°50'00.620"W |
| PRECISION 462 (20) (RKB) to Mud line (At Slot: SLOT#17 GREELEY-ROTHER FEDERAL 12C-2-L (1083FSL & 294FEL, SEC.01)) | | | | | | -4892ft |
| Mean Sea Level to Mud line (At Slot: SLOT#17 GREELEY-ROTHER FEDERAL 12C-2-L (1083FSL & 294FEL, SEC.01)) | | | | | | 0ft |
| PRECISION 462 (20) (RKB) to Mean Sea Level | | | | | | -4892ft |

Survey Program

| Start MD (ft) | End MD (ft) | Tool | Model | Log Name/Comment | Wellbore |
|---------------|-------------|--------------------|--|------------------|------------------------------------|
| 20.00 | 1750.00 | BHI NavTrak | Custom BHI NavTrak (Standard Rotating+Metal Cor) (Rockies 0.03G model) | | GREELEY-ROTHER FEDERAL 12C-2-L PWB |
| 1750.00 | 17366.24 | BHI AutoTrak Curve | Custom BHI AutoTrak Curve (FR1, Short) (Rockies 0.03G model) | | GREELEY-ROTHER FEDERAL 12C-2-L PWB |

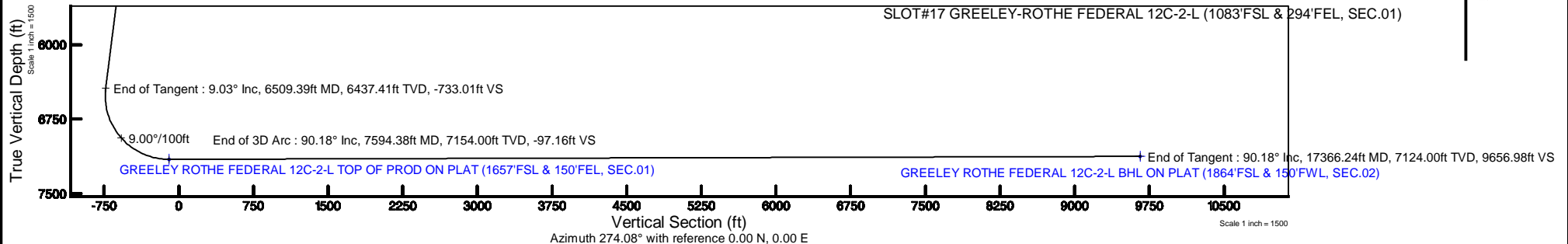


SRC ENERGY



BGGM (1900.0 to 2018.0) Dip: 66.87° Field: 52416.1 nT
Magnetic North is 8.39 degrees East of True North (at 9/22/2017)

To correct azimuth from Magnetic to True add 8.39 degrees



Targets

| Name | MD (ft) | TVD (ft) | Local N (ft) | Local E (ft) | Grid East (US ft) | Grid North (US ft) | Latitude | Longitude |
|---|----------|----------|--------------|--------------|-------------------|--------------------|----------------|-----------------|
| SEC.01-T05N-R67W | | 22.00 | 1284.61 | -0.85 | 3185545.50 | 1399477.36 | 40°25'40.991"N | 104°50'00.640"W |
| SEC.02-T05N-R67W | | 22.00 | 1284.61 | -0.85 | 3185545.50 | 1399477.36 | 40°25'40.991"N | 104°50'00.640"W |
| GREELEY ROTHER FEDERAL 12C-2-L BHL ON PLAT (1864FSL & 150FWL, SEC.02) | 17366.24 | 7124.00 | 686.49 | -9632.55 | 3175918.95 | 1398906.88 | 40°25'35.062"N | 104°50'05.182"W |
| GREELEY ROTHER FEDERAL 12C-2-L TOP OF PROD ON PLAT (1657FSL & 150FEL, SEC.01) | 7594.38 | 7154.00 | 578.96 | 138.67 | 3185690.31 | 1398772.80 | 40°25'34.016"N | 104°49'58.836"W |

Hole and Casing Sections

| Name | Start MD (ft) | End MD (ft) | Interval (ft) | Start TVD (ft) | End TVD (ft) | Start Local N (ft) | Start Local E (ft) | End Local N (ft) | End Local E (ft) | Wellbore |
|------------------------|---------------|-------------|---------------|----------------|--------------|--------------------|--------------------|------------------|------------------|------------------------------------|
| 13.5in Open Hole | 20.00 | 1750.00 | 1730.00 | 20.00 | 1737.00 | 0.00 | 0.00 | 97.12 | 147.39 | GREELEY-ROTHER FEDERAL 12C-2-L PWB |
| 9.625in Casing Surface | 20.00 | 1750.00 | 1730.00 | 20.00 | 1737.00 | 0.00 | 0.00 | 97.12 | 147.39 | GREELEY-ROTHER FEDERAL 12C-2-L PWB |
| 8.5in Open Hole | 1750.00 | 17366.24 | 15616.24 | 1737.00 | 7124.00 | 97.12 | 147.39 | 686.49 | -9632.55 | GREELEY-ROTHER FEDERAL 12C-2-L PWB |

Well Profile Data

| Design Comment | MD (ft) | Inc (°) | Az (°) | TVD (ft) | Local N (ft) | Local E (ft) | DLS (°/100ft) | VS (ft) |
|----------------|----------|---------|---------|----------|--------------|--------------|---------------|---------|
| Tie On | 20.00 | 0.000 | 56.617 | 20.00 | 0.00 | 0.00 | 0.00 | 0.00 |
| End of Tangent | 400.00 | 0.000 | 56.617 | 400.00 | 0.00 | 0.00 | 0.00 | 0.00 |
| End of Build | 851.46 | 9.029 | 56.617 | 849.59 | 19.53 | 29.64 | 2.00 | -28.18 |
| End of Tangent | 6509.39 | 9.029 | 56.617 | 6437.41 | 508.10 | 771.08 | 0.00 | -733.01 |
| End of 3D Arc | 7594.38 | 90.176 | 270.630 | 7154.00 | 578.96 | 138.67 | 9.00 | -97.16 |
| End of Tangent | 17366.24 | 90.176 | 270.630 | 7124.00 | 686.49 | -9632.55 | 0.00 | 9656.98 |

GREELEY-ROTHE_FEDERAL_12C-2-L_PWP__REV-A.0_.las

~VERSION INFORMATION

VERS. 2.0 : CWLS LOG ASCII STANDARD-VERSION 2.0

WRAP. NO : ASCII DATA SECTION CONTAINS ONE ROW PER WELLPATH STATION

~WELL INFORMATION

| #MNEM | .UNITS | DATA | :DESCRIPTION |
|-------|--------|--------------------------------|-------------------------------|
| #---- | .----- | ---- | :----- |
| STRT | .ft | 0.00 | :START MD |
| STOP | .ft | 17366.24 | :STOP MD |
| STEP | .ft | 0.0 | :STEP (non-uniform increment) |
| NULL | . | -999.99 | :NULL |
| COMP | . | SRC ENERGY | :OPERATOR |
| WELL | . | GREELEY-ROTHE FEDERAL 12C-2-L | :WELL |
| FLD | . | WELD COUNTY (NAD83,TRUE NORTH) | :FIELD |
| LOC | . | COLORADO | :AREA (aka: Location) |
| CNTY | . | N/A | :COUNTY |
| STAT | . | N/A | :STATE |
| CTRY | . | N/A | :COUNTRY |
| SRVC | . | Baker Hughes | :CONTRACTOR |
| DATE | . | 10/04/2017 | :LOG REV DATE |
| API | . | | :API NUMBER |

~OTHER INFORMATION

#Software: WellArchitect(R) Version 5.0

| #MNEM | .UNITS | DATA | :DESCRIPTION |
|----------|--------|--|--------------------------------|
| #---- | .----- | ---- | :----- |
| WPTYPE | . | PLANNED WELLPATH | :WELLPATH TYPE |
| FACILITY | . | SEC.01-T05N-R67W | :FACILITY |
| SLOT | . | SLOT#17 GREELEY-ROTHE FEDERAL 12C-2-L (1083'FSL & 294'FEL, SEC.01) | :SLOT |
| WELLBORE | . | GREELEY-ROTHE FEDERAL 12C-2-L PWB | :WELLBORE |
| WELLPATH | . | GREELEY-ROTHE FEDERAL 12C-2-L PWP (REV-A.0) | :WELLPATH |
| MDREFPT | . | PRECISION 462 (20') (RKB) | :MD REFERENCE POINT |
| TVDREFPT | . | PRECISION 462 (20') (RKB) | :TVD REFERENCE POINT |
| LCLREFPT | . | Slot | :LOCAL COORDINATE REFERENCE PT |

GREELEY-ROTHER_FEDERAL_12C-2-L_PWP__REV-A.0_.las

VSAZIMUTH.deg 274.08 :VERTICAL SECTION AZIMUTH
 VSORIGIN .ft 0.00 :VERTICAL SECTION ORIGIN NORTH
 VSORIGE .ft 0.00 :VERTICAL SECTION ORIGIN EAST

~CURVE (WELLPATH) INFORMATION

#MNEM .UNITS :DESCRIPTION
 #---- .----- :-----
 DEPT .ft :MEASURED DEPTH
 INC .deg :INCLINATION
 AZI .deg :AZIMUTH
 TVD .ft :TRUE VERTICAL DEPTH
 SECT .ft :CROSS SECTION (CURTAIN/VERTICAL)
 LOCALN .ft :LOCAL NORTH
 LOCALE .ft :LOCAL EAST
 LAT .deg :LATITUDE
 LONG .deg :LONGITUDE
 DLS .deg/100ft :DOGLEG SEVERITY

~ASCII DATA

| | | | | | | | | | |
|---------|------|-------|---------|--------|-------|-------|------------|--------------|------|
| 0.00 | 0.00 | 56.62 | 0.00 | 0.00 | 0.00 | 0.00 | 40.4245269 | -104.8335081 | 0.00 |
| 20.00 | 0.00 | 56.62 | 20.00 | 0.00 | 0.00 | 0.00 | 40.4245269 | -104.8335081 | 0.00 |
| 120.00 | 0.00 | 56.62 | 120.00 | 0.00 | 0.00 | 0.00 | 40.4245269 | -104.8335081 | 0.00 |
| 220.00 | 0.00 | 56.62 | 220.00 | 0.00 | 0.00 | 0.00 | 40.4245269 | -104.8335081 | 0.00 |
| 320.00 | 0.00 | 56.62 | 320.00 | 0.00 | 0.00 | 0.00 | 40.4245269 | -104.8335081 | 0.00 |
| 400.00 | 0.00 | 56.62 | 400.00 | 0.00 | 0.00 | 0.00 | 40.4245269 | -104.8335081 | 0.00 |
| 420.00 | 0.40 | 56.62 | 420.00 | -0.06 | 0.04 | 0.06 | 40.4245270 | -104.8335078 | 2.00 |
| 520.00 | 2.40 | 56.62 | 519.96 | -1.99 | 1.38 | 2.10 | 40.4245307 | -104.8335005 | 2.00 |
| 620.00 | 4.40 | 56.62 | 619.78 | -6.70 | 4.65 | 7.05 | 40.4245397 | -104.8334827 | 2.00 |
| 720.00 | 6.40 | 56.62 | 719.33 | -14.17 | 9.82 | 14.91 | 40.4245539 | -104.8334545 | 2.00 |
| 820.00 | 8.40 | 56.62 | 818.50 | -24.40 | 16.91 | 25.66 | 40.4245734 | -104.8334159 | 2.00 |
| 851.46 | 9.03 | 56.62 | 849.59 | -28.18 | 19.53 | 29.64 | 40.4245806 | -104.8334016 | 2.00 |
| 920.00 | 9.03 | 56.62 | 917.28 | -36.72 | 25.45 | 38.62 | 40.4245968 | -104.8333693 | 0.00 |
| 1020.00 | 9.03 | 56.62 | 1016.05 | -49.17 | 34.09 | 51.73 | 40.4246205 | -104.8333223 | 0.00 |
| 1120.00 | 9.03 | 56.62 | 1114.81 | -61.63 | 42.72 | 64.83 | 40.4246442 | -104.8332752 | 0.00 |

GREELEY-ROTHE_FEDERAL_12C-2-L_PWP__REV-A.0_.las

| | | | | | | | | | |
|---------|------|-------|---------|---------|--------|--------|------------|--------------|------|
| 1220.00 | 9.03 | 56.62 | 1213.57 | -74.09 | 51.36 | 77.94 | 40.4246679 | -104.8332281 | 0.00 |
| 1320.00 | 9.03 | 56.62 | 1312.33 | -86.55 | 59.99 | 91.04 | 40.4246916 | -104.8331811 | 0.00 |
| 1420.00 | 9.03 | 56.62 | 1411.09 | -99.00 | 68.63 | 104.15 | 40.4247153 | -104.8331340 | 0.00 |
| 1520.00 | 9.03 | 56.62 | 1509.85 | -111.46 | 77.26 | 117.25 | 40.4247390 | -104.8330869 | 0.00 |
| 1620.00 | 9.03 | 56.62 | 1608.61 | -123.92 | 85.90 | 130.36 | 40.4247627 | -104.8330399 | 0.00 |
| 1720.00 | 9.03 | 56.62 | 1707.37 | -136.38 | 94.53 | 143.46 | 40.4247864 | -104.8329928 | 0.00 |
| 1820.00 | 9.03 | 56.62 | 1806.13 | -148.83 | 103.17 | 156.56 | 40.4248101 | -104.8329457 | 0.00 |
| 1920.00 | 9.03 | 56.62 | 1904.89 | -161.29 | 111.80 | 169.67 | 40.4248338 | -104.8328987 | 0.00 |
| 2020.00 | 9.03 | 56.62 | 2003.65 | -173.75 | 120.44 | 182.77 | 40.4248575 | -104.8328516 | 0.00 |
| 2120.00 | 9.03 | 56.62 | 2102.41 | -186.21 | 129.07 | 195.88 | 40.4248812 | -104.8328045 | 0.00 |
| 2220.00 | 9.03 | 56.62 | 2201.18 | -198.66 | 137.71 | 208.98 | 40.4249049 | -104.8327575 | 0.00 |
| 2320.00 | 9.03 | 56.62 | 2299.94 | -211.12 | 146.34 | 222.09 | 40.4249286 | -104.8327104 | 0.00 |
| 2420.00 | 9.03 | 56.62 | 2398.70 | -223.58 | 154.98 | 235.19 | 40.4249523 | -104.8326633 | 0.00 |
| 2520.00 | 9.03 | 56.62 | 2497.46 | -236.04 | 163.61 | 248.29 | 40.4249760 | -104.8326163 | 0.00 |
| 2620.00 | 9.03 | 56.62 | 2596.22 | -248.49 | 172.25 | 261.40 | 40.4249997 | -104.8325692 | 0.00 |
| 2720.00 | 9.03 | 56.62 | 2694.98 | -260.95 | 180.88 | 274.50 | 40.4250234 | -104.8325221 | 0.00 |
| 2820.00 | 9.03 | 56.62 | 2793.74 | -273.41 | 189.52 | 287.61 | 40.4250471 | -104.8324750 | 0.00 |
| 2920.00 | 9.03 | 56.62 | 2892.50 | -285.87 | 198.15 | 300.71 | 40.4250708 | -104.8324280 | 0.00 |
| 3020.00 | 9.03 | 56.62 | 2991.26 | -298.32 | 206.79 | 313.82 | 40.4250945 | -104.8323809 | 0.00 |
| 3120.00 | 9.03 | 56.62 | 3090.02 | -310.78 | 215.42 | 326.92 | 40.4251182 | -104.8323338 | 0.00 |
| 3220.00 | 9.03 | 56.62 | 3188.78 | -323.24 | 224.06 | 340.03 | 40.4251419 | -104.8322868 | 0.00 |
| 3320.00 | 9.03 | 56.62 | 3287.55 | -335.70 | 232.69 | 353.13 | 40.4251657 | -104.8322397 | 0.00 |
| 3420.00 | 9.03 | 56.62 | 3386.31 | -348.15 | 241.33 | 366.23 | 40.4251894 | -104.8321926 | 0.00 |
| 3520.00 | 9.03 | 56.62 | 3485.07 | -360.61 | 249.96 | 379.34 | 40.4252131 | -104.8321456 | 0.00 |
| 3620.00 | 9.03 | 56.62 | 3583.83 | -373.07 | 258.60 | 392.44 | 40.4252368 | -104.8320985 | 0.00 |
| 3720.00 | 9.03 | 56.62 | 3682.59 | -385.53 | 267.23 | 405.55 | 40.4252605 | -104.8320514 | 0.00 |
| 3820.00 | 9.03 | 56.62 | 3781.35 | -397.98 | 275.87 | 418.65 | 40.4252842 | -104.8320044 | 0.00 |
| 3920.00 | 9.03 | 56.62 | 3880.11 | -410.44 | 284.50 | 431.76 | 40.4253079 | -104.8319573 | 0.00 |
| 4020.00 | 9.03 | 56.62 | 3978.87 | -422.90 | 293.14 | 444.86 | 40.4253316 | -104.8319102 | 0.00 |
| 4120.00 | 9.03 | 56.62 | 4077.63 | -435.36 | 301.77 | 457.97 | 40.4253553 | -104.8318632 | 0.00 |
| 4220.00 | 9.03 | 56.62 | 4176.39 | -447.81 | 310.41 | 471.07 | 40.4253790 | -104.8318161 | 0.00 |
| 4320.00 | 9.03 | 56.62 | 4275.15 | -460.27 | 319.04 | 484.17 | 40.4254027 | -104.8317690 | 0.00 |
| 4420.00 | 9.03 | 56.62 | 4373.91 | -472.73 | 327.68 | 497.28 | 40.4254264 | -104.8317220 | 0.00 |
| 4520.00 | 9.03 | 56.62 | 4472.68 | -485.18 | 336.31 | 510.38 | 40.4254501 | -104.8316749 | 0.00 |

GREELEY-ROTHE_FEDERAL_12C-2-L_PWP__REV-A.0_.las

| | | | | | | | | | |
|---------|-------|--------|---------|---------|--------|--------|------------|--------------|------|
| 4620.00 | 9.03 | 56.62 | 4571.44 | -497.64 | 344.95 | 523.49 | 40.4254738 | -104.8316278 | 0.00 |
| 4720.00 | 9.03 | 56.62 | 4670.20 | -510.10 | 353.58 | 536.59 | 40.4254975 | -104.8315808 | 0.00 |
| 4820.00 | 9.03 | 56.62 | 4768.96 | -522.56 | 362.22 | 549.70 | 40.4255212 | -104.8315337 | 0.00 |
| 4920.00 | 9.03 | 56.62 | 4867.72 | -535.01 | 370.85 | 562.80 | 40.4255449 | -104.8314866 | 0.00 |
| 5020.00 | 9.03 | 56.62 | 4966.48 | -547.47 | 379.49 | 575.91 | 40.4255686 | -104.8314396 | 0.00 |
| 5120.00 | 9.03 | 56.62 | 5065.24 | -559.93 | 388.12 | 589.01 | 40.4255923 | -104.8313925 | 0.00 |
| 5220.00 | 9.03 | 56.62 | 5164.00 | -572.39 | 396.76 | 602.11 | 40.4256160 | -104.8313454 | 0.00 |
| 5320.00 | 9.03 | 56.62 | 5262.76 | -584.84 | 405.39 | 615.22 | 40.4256397 | -104.8312983 | 0.00 |
| 5420.00 | 9.03 | 56.62 | 5361.52 | -597.30 | 414.03 | 628.32 | 40.4256634 | -104.8312513 | 0.00 |
| 5520.00 | 9.03 | 56.62 | 5460.28 | -609.76 | 422.66 | 641.43 | 40.4256871 | -104.8312042 | 0.00 |
| 5620.00 | 9.03 | 56.62 | 5559.05 | -622.22 | 431.30 | 654.53 | 40.4257108 | -104.8311571 | 0.00 |
| 5720.00 | 9.03 | 56.62 | 5657.81 | -634.67 | 439.93 | 667.64 | 40.4257345 | -104.8311101 | 0.00 |
| 5820.00 | 9.03 | 56.62 | 5756.57 | -647.13 | 448.57 | 680.74 | 40.4257582 | -104.8310630 | 0.00 |
| 5920.00 | 9.03 | 56.62 | 5855.33 | -659.59 | 457.20 | 693.85 | 40.4257819 | -104.8310159 | 0.00 |
| 6020.00 | 9.03 | 56.62 | 5954.09 | -672.05 | 465.84 | 706.95 | 40.4258056 | -104.8309689 | 0.00 |
| 6120.00 | 9.03 | 56.62 | 6052.85 | -684.50 | 474.47 | 720.05 | 40.4258293 | -104.8309218 | 0.00 |
| 6220.00 | 9.03 | 56.62 | 6151.61 | -696.96 | 483.11 | 733.16 | 40.4258530 | -104.8308747 | 0.00 |
| 6320.00 | 9.03 | 56.62 | 6250.37 | -709.42 | 491.74 | 746.26 | 40.4258767 | -104.8308277 | 0.00 |
| 6420.00 | 9.03 | 56.62 | 6349.13 | -721.88 | 500.38 | 759.37 | 40.4259004 | -104.8307806 | 0.00 |
| 6509.39 | 9.03 | 56.62 | 6437.41 | -733.01 | 508.10 | 771.08 | 40.4259216 | -104.8307385 | 0.00 |
| 6520.00 | 8.26 | 52.86 | 6447.90 | -734.25 | 509.02 | 772.38 | 40.4259241 | -104.8307338 | 9.00 |
| 6620.00 | 5.65 | 334.57 | 6547.35 | -737.23 | 517.82 | 776.00 | 40.4259483 | -104.8307208 | 9.00 |
| 6720.00 | 12.54 | 294.21 | 6646.11 | -724.58 | 526.74 | 763.96 | 40.4259727 | -104.8307641 | 9.00 |
| 6820.00 | 21.08 | 283.99 | 6741.77 | -696.62 | 535.55 | 736.55 | 40.4259969 | -104.8308625 | 9.00 |
| 6920.00 | 29.88 | 279.55 | 6831.97 | -654.02 | 544.05 | 694.45 | 40.4260203 | -104.8310137 | 9.00 |
| 7020.00 | 38.76 | 277.00 | 6914.48 | -597.85 | 552.02 | 638.70 | 40.4260421 | -104.8312140 | 9.00 |
| 7120.00 | 47.69 | 275.29 | 6987.27 | -529.47 | 559.26 | 570.67 | 40.4260620 | -104.8314583 | 9.00 |
| 7220.00 | 56.63 | 274.00 | 7048.56 | -450.59 | 565.59 | 492.04 | 40.4260794 | -104.8317408 | 9.00 |
| 7320.00 | 65.58 | 272.96 | 7096.83 | -363.13 | 570.87 | 404.74 | 40.4260939 | -104.8320543 | 9.00 |
| 7420.00 | 74.55 | 272.06 | 7130.89 | -269.26 | 574.96 | 310.91 | 40.4261051 | -104.8323913 | 9.00 |
| 7520.00 | 83.51 | 271.23 | 7149.90 | -171.28 | 577.75 | 212.88 | 40.4261128 | -104.8327434 | 9.00 |
| 7594.38 | 90.18 | 270.63 | 7154.00 | -97.16 | 578.96 | 138.67 | 40.4261161 | -104.8330100 | 9.00 |
| 7620.00 | 90.18 | 270.63 | 7153.92 | -71.59 | 579.24 | 113.05 | 40.4261169 | -104.8331020 | 0.00 |
| 7720.00 | 90.18 | 270.63 | 7153.61 | 28.23 | 580.34 | 13.06 | 40.4261199 | -104.8334612 | 0.00 |

GREELEY-ROTHE_FEDERAL_12C-2-L_PWP__REV-A.0_.las

| | | | | | | | | | |
|----------|-------|--------|---------|---------|--------|----------|------------|--------------|------|
| 7820.00 | 90.18 | 270.63 | 7153.31 | 128.05 | 581.44 | -86.94 | 40.4261229 | -104.8338203 | 0.00 |
| 7920.00 | 90.18 | 270.63 | 7153.00 | 227.87 | 582.54 | -186.93 | 40.4261259 | -104.8341795 | 0.00 |
| 8020.00 | 90.18 | 270.63 | 7152.69 | 327.69 | 583.64 | -286.92 | 40.4261290 | -104.8345386 | 0.00 |
| 8120.00 | 90.18 | 270.63 | 7152.39 | 427.50 | 584.74 | -386.92 | 40.4261320 | -104.8348978 | 0.00 |
| 8220.00 | 90.18 | 270.63 | 7152.08 | 527.32 | 585.84 | -486.91 | 40.4261350 | -104.8352569 | 0.00 |
| 8320.00 | 90.18 | 270.63 | 7151.77 | 627.14 | 586.94 | -586.90 | 40.4261380 | -104.8356161 | 0.00 |
| 8420.00 | 90.18 | 270.63 | 7151.47 | 726.96 | 588.04 | -686.90 | 40.4261410 | -104.8359752 | 0.00 |
| 8520.00 | 90.18 | 270.63 | 7151.16 | 826.78 | 589.14 | -786.89 | 40.4261440 | -104.8363344 | 0.00 |
| 8620.00 | 90.18 | 270.63 | 7150.85 | 926.60 | 590.24 | -886.88 | 40.4261470 | -104.8366935 | 0.00 |
| 8720.00 | 90.18 | 270.63 | 7150.54 | 1026.42 | 591.34 | -986.88 | 40.4261501 | -104.8370527 | 0.00 |
| 8820.00 | 90.18 | 270.63 | 7150.24 | 1126.24 | 592.44 | -1086.87 | 40.4261531 | -104.8374118 | 0.00 |
| 8920.00 | 90.18 | 270.63 | 7149.93 | 1226.05 | 593.54 | -1186.86 | 40.4261561 | -104.8377710 | 0.00 |
| 9020.00 | 90.18 | 270.63 | 7149.62 | 1325.87 | 594.64 | -1286.86 | 40.4261591 | -104.8381302 | 0.00 |
| 9120.00 | 90.18 | 270.63 | 7149.32 | 1425.69 | 595.74 | -1386.85 | 40.4261621 | -104.8384893 | 0.00 |
| 9220.00 | 90.18 | 270.63 | 7149.01 | 1525.51 | 596.84 | -1486.84 | 40.4261651 | -104.8388485 | 0.00 |
| 9320.00 | 90.18 | 270.63 | 7148.70 | 1625.33 | 597.94 | -1586.84 | 40.4261681 | -104.8392076 | 0.00 |
| 9420.00 | 90.18 | 270.63 | 7148.40 | 1725.15 | 599.04 | -1686.83 | 40.4261711 | -104.8395668 | 0.00 |
| 9520.00 | 90.18 | 270.63 | 7148.09 | 1824.97 | 600.15 | -1786.82 | 40.4261741 | -104.8399259 | 0.00 |
| 9620.00 | 90.18 | 270.63 | 7147.78 | 1924.79 | 601.25 | -1886.82 | 40.4261771 | -104.8402851 | 0.00 |
| 9720.00 | 90.18 | 270.63 | 7147.47 | 2024.60 | 602.35 | -1986.81 | 40.4261801 | -104.8406442 | 0.00 |
| 9820.00 | 90.18 | 270.63 | 7147.17 | 2124.42 | 603.45 | -2086.81 | 40.4261831 | -104.8410034 | 0.00 |
| 9920.00 | 90.18 | 270.63 | 7146.86 | 2224.24 | 604.55 | -2186.80 | 40.4261861 | -104.8413625 | 0.00 |
| 10020.00 | 90.18 | 270.63 | 7146.55 | 2324.06 | 605.65 | -2286.79 | 40.4261891 | -104.8417217 | 0.00 |
| 10120.00 | 90.18 | 270.63 | 7146.25 | 2423.88 | 606.75 | -2386.79 | 40.4261921 | -104.8420808 | 0.00 |
| 10220.00 | 90.18 | 270.63 | 7145.94 | 2523.70 | 607.85 | -2486.78 | 40.4261951 | -104.8424400 | 0.00 |
| 10320.00 | 90.18 | 270.63 | 7145.63 | 2623.52 | 608.95 | -2586.77 | 40.4261981 | -104.8427992 | 0.00 |
| 10420.00 | 90.18 | 270.63 | 7145.33 | 2723.34 | 610.05 | -2686.77 | 40.4262011 | -104.8431583 | 0.00 |
| 10520.00 | 90.18 | 270.63 | 7145.02 | 2823.15 | 611.15 | -2786.76 | 40.4262040 | -104.8435175 | 0.00 |
| 10620.00 | 90.18 | 270.63 | 7144.71 | 2922.97 | 612.25 | -2886.75 | 40.4262070 | -104.8438766 | 0.00 |
| 10720.00 | 90.18 | 270.63 | 7144.40 | 3022.79 | 613.35 | -2986.75 | 40.4262100 | -104.8442358 | 0.00 |
| 10820.00 | 90.18 | 270.63 | 7144.10 | 3122.61 | 614.45 | -3086.74 | 40.4262130 | -104.8445949 | 0.00 |
| 10920.00 | 90.18 | 270.63 | 7143.79 | 3222.43 | 615.55 | -3186.73 | 40.4262160 | -104.8449541 | 0.00 |
| 11020.00 | 90.18 | 270.63 | 7143.48 | 3322.25 | 616.65 | -3286.73 | 40.4262190 | -104.8453132 | 0.00 |
| 11120.00 | 90.18 | 270.63 | 7143.18 | 3422.07 | 617.75 | -3386.72 | 40.4262220 | -104.8456724 | 0.00 |

GREELEY-ROTHER_FEDERAL_12C-2-L_PWP__REV-A.0_.las

| | | | | | | | | | |
|----------|-------|--------|---------|---------|--------|----------|------------|--------------|------|
| 11220.00 | 90.18 | 270.63 | 7142.87 | 3521.89 | 618.85 | -3486.71 | 40.4262249 | -104.8460315 | 0.00 |
| 11320.00 | 90.18 | 270.63 | 7142.56 | 3621.70 | 619.95 | -3586.71 | 40.4262279 | -104.8463907 | 0.00 |
| 11420.00 | 90.18 | 270.63 | 7142.26 | 3721.52 | 621.05 | -3686.70 | 40.4262309 | -104.8467499 | 0.00 |
| 11520.00 | 90.18 | 270.63 | 7141.95 | 3821.34 | 622.15 | -3786.69 | 40.4262339 | -104.8471090 | 0.00 |
| 11620.00 | 90.18 | 270.63 | 7141.64 | 3921.16 | 623.25 | -3886.69 | 40.4262369 | -104.8474682 | 0.00 |
| 11720.00 | 90.18 | 270.63 | 7141.33 | 4020.98 | 624.35 | -3986.68 | 40.4262398 | -104.8478273 | 0.00 |
| 11820.00 | 90.18 | 270.63 | 7141.03 | 4120.80 | 625.45 | -4086.67 | 40.4262428 | -104.8481865 | 0.00 |
| 11920.00 | 90.18 | 270.63 | 7140.72 | 4220.62 | 626.55 | -4186.67 | 40.4262458 | -104.8485456 | 0.00 |
| 12020.00 | 90.18 | 270.63 | 7140.41 | 4320.44 | 627.66 | -4286.66 | 40.4262488 | -104.8489048 | 0.00 |
| 12120.00 | 90.18 | 270.63 | 7140.11 | 4420.25 | 628.76 | -4386.66 | 40.4262517 | -104.8492639 | 0.00 |
| 12220.00 | 90.18 | 270.63 | 7139.80 | 4520.07 | 629.86 | -4486.65 | 40.4262547 | -104.8496231 | 0.00 |
| 12320.00 | 90.18 | 270.63 | 7139.49 | 4619.89 | 630.96 | -4586.64 | 40.4262577 | -104.8499822 | 0.00 |
| 12420.00 | 90.18 | 270.63 | 7139.19 | 4719.71 | 632.06 | -4686.64 | 40.4262606 | -104.8503414 | 0.00 |
| 12520.00 | 90.18 | 270.63 | 7138.88 | 4819.53 | 633.16 | -4786.63 | 40.4262636 | -104.8507006 | 0.00 |
| 12620.00 | 90.18 | 270.63 | 7138.57 | 4919.35 | 634.26 | -4886.62 | 40.4262666 | -104.8510597 | 0.00 |
| 12720.00 | 90.18 | 270.63 | 7138.26 | 5019.17 | 635.36 | -4986.62 | 40.4262695 | -104.8514189 | 0.00 |
| 12820.00 | 90.18 | 270.63 | 7137.96 | 5118.98 | 636.46 | -5086.61 | 40.4262725 | -104.8517780 | 0.00 |
| 12920.00 | 90.18 | 270.63 | 7137.65 | 5218.80 | 637.56 | -5186.60 | 40.4262755 | -104.8521372 | 0.00 |
| 13020.00 | 90.18 | 270.63 | 7137.34 | 5318.62 | 638.66 | -5286.60 | 40.4262784 | -104.8524963 | 0.00 |
| 13120.00 | 90.18 | 270.63 | 7137.04 | 5418.44 | 639.76 | -5386.59 | 40.4262814 | -104.8528555 | 0.00 |
| 13220.00 | 90.18 | 270.63 | 7136.73 | 5518.26 | 640.86 | -5486.58 | 40.4262844 | -104.8532146 | 0.00 |
| 13320.00 | 90.18 | 270.63 | 7136.42 | 5618.08 | 641.96 | -5586.58 | 40.4262873 | -104.8535738 | 0.00 |
| 13420.00 | 90.18 | 270.63 | 7136.12 | 5717.90 | 643.06 | -5686.57 | 40.4262903 | -104.8539330 | 0.00 |
| 13520.00 | 90.18 | 270.63 | 7135.81 | 5817.72 | 644.16 | -5786.56 | 40.4262932 | -104.8542921 | 0.00 |
| 13620.00 | 90.18 | 270.63 | 7135.50 | 5917.53 | 645.26 | -5886.56 | 40.4262962 | -104.8546513 | 0.00 |
| 13720.00 | 90.18 | 270.63 | 7135.19 | 6017.35 | 646.36 | -5986.55 | 40.4262991 | -104.8550104 | 0.00 |
| 13820.00 | 90.18 | 270.63 | 7134.89 | 6117.17 | 647.46 | -6086.54 | 40.4263021 | -104.8553696 | 0.00 |
| 13920.00 | 90.18 | 270.63 | 7134.58 | 6216.99 | 648.56 | -6186.54 | 40.4263050 | -104.8557287 | 0.00 |
| 14020.00 | 90.18 | 270.63 | 7134.27 | 6316.81 | 649.66 | -6286.53 | 40.4263080 | -104.8560879 | 0.00 |
| 14120.00 | 90.18 | 270.63 | 7133.97 | 6416.63 | 650.76 | -6386.52 | 40.4263109 | -104.8564470 | 0.00 |
| 14220.00 | 90.18 | 270.63 | 7133.66 | 6516.45 | 651.86 | -6486.52 | 40.4263139 | -104.8568062 | 0.00 |
| 14320.00 | 90.18 | 270.63 | 7133.35 | 6616.27 | 652.96 | -6586.51 | 40.4263168 | -104.8571654 | 0.00 |
| 14420.00 | 90.18 | 270.63 | 7133.05 | 6716.08 | 654.06 | -6686.51 | 40.4263198 | -104.8575245 | 0.00 |
| 14520.00 | 90.18 | 270.63 | 7132.74 | 6815.90 | 655.17 | -6786.50 | 40.4263227 | -104.8578837 | 0.00 |

GREELEY-ROTHER_FEDERAL_12C-2-L_PWP__REV-A.0_.las

| | | | | | | | | | |
|----------|-------|--------|---------|---------|--------|----------|------------|--------------|------|
| 14620.00 | 90.18 | 270.63 | 7132.43 | 6915.72 | 656.27 | -6886.49 | 40.4263257 | -104.8582428 | 0.00 |
| 14720.00 | 90.18 | 270.63 | 7132.12 | 7015.54 | 657.37 | -6986.49 | 40.4263286 | -104.8586020 | 0.00 |
| 14820.00 | 90.18 | 270.63 | 7131.82 | 7115.36 | 658.47 | -7086.48 | 40.4263316 | -104.8589611 | 0.00 |
| 14920.00 | 90.18 | 270.63 | 7131.51 | 7215.18 | 659.57 | -7186.47 | 40.4263345 | -104.8593203 | 0.00 |
| 15020.00 | 90.18 | 270.63 | 7131.20 | 7315.00 | 660.67 | -7286.47 | 40.4263374 | -104.8596794 | 0.00 |
| 15120.00 | 90.18 | 270.63 | 7130.90 | 7414.82 | 661.77 | -7386.46 | 40.4263404 | -104.8600386 | 0.00 |
| 15220.00 | 90.18 | 270.63 | 7130.59 | 7514.63 | 662.87 | -7486.45 | 40.4263433 | -104.8603978 | 0.00 |
| 15320.00 | 90.18 | 270.63 | 7130.28 | 7614.45 | 663.97 | -7586.45 | 40.4263463 | -104.8607569 | 0.00 |
| 15420.00 | 90.18 | 270.63 | 7129.98 | 7714.27 | 665.07 | -7686.44 | 40.4263492 | -104.8611161 | 0.00 |
| 15520.00 | 90.18 | 270.63 | 7129.67 | 7814.09 | 666.17 | -7786.43 | 40.4263521 | -104.8614752 | 0.00 |
| 15620.00 | 90.18 | 270.63 | 7129.36 | 7913.91 | 667.27 | -7886.43 | 40.4263551 | -104.8618344 | 0.00 |
| 15720.00 | 90.18 | 270.63 | 7129.05 | 8013.73 | 668.37 | -7986.42 | 40.4263580 | -104.8621935 | 0.00 |
| 15820.00 | 90.18 | 270.63 | 7128.75 | 8113.55 | 669.47 | -8086.41 | 40.4263609 | -104.8625527 | 0.00 |
| 15920.00 | 90.18 | 270.63 | 7128.44 | 8213.37 | 670.57 | -8186.41 | 40.4263639 | -104.8629118 | 0.00 |
| 16020.00 | 90.18 | 270.63 | 7128.13 | 8313.18 | 671.67 | -8286.40 | 40.4263668 | -104.8632710 | 0.00 |
| 16120.00 | 90.18 | 270.63 | 7127.83 | 8413.00 | 672.77 | -8386.39 | 40.4263697 | -104.8636302 | 0.00 |
| 16220.00 | 90.18 | 270.63 | 7127.52 | 8512.82 | 673.87 | -8486.39 | 40.4263726 | -104.8639893 | 0.00 |
| 16320.00 | 90.18 | 270.63 | 7127.21 | 8612.64 | 674.97 | -8586.38 | 40.4263756 | -104.8643485 | 0.00 |
| 16420.00 | 90.18 | 270.63 | 7126.90 | 8712.46 | 676.07 | -8686.37 | 40.4263785 | -104.8647076 | 0.00 |
| 16520.00 | 90.18 | 270.63 | 7126.60 | 8812.28 | 677.17 | -8786.37 | 40.4263814 | -104.8650668 | 0.00 |
| 16620.00 | 90.18 | 270.63 | 7126.29 | 8912.10 | 678.27 | -8886.36 | 40.4263843 | -104.8654259 | 0.00 |
| 16720.00 | 90.18 | 270.63 | 7125.98 | 9011.92 | 679.37 | -8986.36 | 40.4263873 | -104.8657851 | 0.00 |
| 16820.00 | 90.18 | 270.63 | 7125.68 | 9111.73 | 680.47 | -9086.35 | 40.4263902 | -104.8661443 | 0.00 |
| 16920.00 | 90.18 | 270.63 | 7125.37 | 9211.55 | 681.57 | -9186.34 | 40.4263931 | -104.8665034 | 0.00 |
| 17020.00 | 90.18 | 270.63 | 7125.06 | 9311.37 | 682.68 | -9286.34 | 40.4263960 | -104.8668626 | 0.00 |
| 17120.00 | 90.18 | 270.63 | 7124.76 | 9411.19 | 683.78 | -9386.33 | 40.4263989 | -104.8672217 | 0.00 |
| 17220.00 | 90.18 | 270.63 | 7124.45 | 9511.01 | 684.88 | -9486.32 | 40.4264018 | -104.8675809 | 0.00 |
| 17320.00 | 90.18 | 270.63 | 7124.14 | 9610.83 | 685.98 | -9586.32 | 40.4264048 | -104.8679400 | 0.00 |
| 17366.24 | 90.18 | 270.63 | 7124.00 | 9656.98 | 686.49 | -9632.55 | 40.4264061 | -104.8681061 | 0.00 |



Planned Wellpath Report

GREELEY-ROTHER FEDERAL 12C-2-L PWP (REV-A.0)

Page 1 of 7



REFERENCE WELLPATH IDENTIFICATION

| | | | |
|----------|--------------------------------|----------|---|
| Operator | SRC ENERGY | Slot | SLOT#17 GREELEY-ROTHER FEDERAL 12C-2-L (1083'FSL & 294'FEL, SEC.01) |
| Area | COLORADO | Well | GREELEY-ROTHER FEDERAL 12C-2-L |
| Field | WELD COUNTY (NAD83,TRUE NORTH) | Wellbore | GREELEY-ROTHER FEDERAL 12C-2-L PWB |
| Facility | SEC.01-T05N-R67W | | |

REPORT SETUP INFORMATION

| | | | |
|---------------------|---|----------------------|--|
| Projection System | NAD83 / Lambert Colorado SP, Northern Zone (501), US feet | Software System | WellArchitect® 5.0 |
| North Reference | True | User | Doddanna |
| Scale | 0.999961 | Report Generated | 10/4/2017 at 2:16:21 PM |
| Convergence at slot | 0.43° East | Database/Source file | WellArchitectDB/GREELEY-ROTHER FEDERAL 12C-2-L PWP__REV-A.0_.xml |

WELLPATH LOCATION

| | Local coordinates | | Grid coordinates | | Geographic coordinates | |
|-----------------------|-------------------|----------|------------------|-----------------|------------------------|-----------------|
| | North[ft] | East[ft] | Easting[US ft] | Northing[US ft] | Latitude | Longitude |
| Slot Location | -1284.61 | 0.85 | 3185556.00 | 1398192.84 | 40°25'28.297"N | 104°50'00.629"W |
| Facility Reference Pt | | | 3185545.50 | 1399477.36 | 40°25'40.991"N | 104°50'00.640"W |
| Field Reference Pt | | | 3171284.48 | 1426358.81 | 40°30'07.643"N | 104°53'02.634"W |

WELLPATH DATUM

| | | | |
|--------------------------|---------------------------|---|-------------------|
| Calculation method | Minimum curvature | PRECISION 462 (20') (RKB) to Facility Vertical Datum | 4892.00ft |
| Horizontal Reference Pt | Slot | PRECISION 462 (20') (RKB) to Mean Sea Level | 4892.00ft |
| Vertical Reference Pt | PRECISION 462 (20') (RKB) | PRECISION 462 (20') (RKB) to Mud Line at Slot (SLOT#17 GREELEY-ROTHER FEDERAL 12C-2-L (1083'FSL & 294'FEL, SEC.01)) | 4892.00ft |
| MD Reference Pt | PRECISION 462 (20') (RKB) | Section Origin | N 0.00, E 0.00 ft |
| Field Vertical Reference | Mean Sea Level | Section Azimuth | 274.08° |



Planned Wellpath Report

GREELEY-ROTHE FEDERAL 12C-2-L PWP (REV-A.0)

Page 2 of 7



| REFERENCE WELLPATH IDENTIFICATION | | | |
|-----------------------------------|--------------------------------|----------|--|
| Operator | SRC ENERGY | Slot | SLOT#17 GREELEY-ROTHE FEDERAL 12C-2-L (1083'FSL & 294'FEL, SEC.01) |
| Area | COLORADO | Well | GREELEY-ROTHE FEDERAL 12C-2-L |
| Field | WELD COUNTY (NAD83,TRUE NORTH) | Wellbore | GREELEY-ROTHE FEDERAL 12C-2-L PWB |
| Facility | SEC.01-T05N-R67W | | |

| WELLPATH DATA (180 stations) † = interpolated/extrapolated station | | | | | | | | |
|--|--------------------|----------------|-------------|-------------------|---------------|--------------|------------------|----------------|
| MD [ft] | Inclination [°] | Azimuth [°] | TVD [ft] | Vert Sect [ft] | North [ft] | East [ft] | DLS [°/100ft] | Comments |
| 0.00† | 0.000 | 56.617 | 0.00 | 0.00 | 0.00 | 0.00 | 0.00 | |
| 20.00 | 0.000 | 56.617 | 20.00 | 0.00 | 0.00 | 0.00 | 0.00 | Tie On |
| 120.00† | 0.000 | 56.617 | 120.00 | 0.00 | 0.00 | 0.00 | 0.00 | |
| 220.00† | 0.000 | 56.617 | 220.00 | 0.00 | 0.00 | 0.00 | 0.00 | |
| 320.00† | 0.000 | 56.617 | 320.00 | 0.00 | 0.00 | 0.00 | 0.00 | |
| 400.00 | 0.000 | 56.617 | 400.00 | 0.00 | 0.00 | 0.00 | 0.00 | End of Tangent |
| 420.00† | 0.400 | 56.617 | 420.00 | -0.06 | 0.04 | 0.06 | 2.00 | |
| 520.00† | 2.400 | 56.617 | 519.96 | -1.99 | 1.38 | 2.10 | 2.00 | |
| 620.00† | 4.400 | 56.617 | 619.78 | -6.70 | 4.65 | 7.05 | 2.00 | |
| 720.00† | 6.400 | 56.617 | 719.33 | -14.17 | 9.82 | 14.91 | 2.00 | |
| 820.00† | 8.400 | 56.617 | 818.50 | -24.40 | 16.91 | 25.66 | 2.00 | |
| 851.46 | 9.029 | 56.617 | 849.59 | -28.18 | 19.53 | 29.64 | 2.00 | End of Build |
| 920.00† | 9.029 | 56.617 | 917.28 | -36.72 | 25.45 | 38.62 | 0.00 | |
| 1020.00† | 9.029 | 56.617 | 1016.05 | -49.17 | 34.09 | 51.73 | 0.00 | |
| 1120.00† | 9.029 | 56.617 | 1114.81 | -61.63 | 42.72 | 64.83 | 0.00 | |
| 1220.00† | 9.029 | 56.617 | 1213.57 | -74.09 | 51.36 | 77.94 | 0.00 | |
| 1320.00† | 9.029 | 56.617 | 1312.33 | -86.55 | 59.99 | 91.04 | 0.00 | |
| 1420.00† | 9.029 | 56.617 | 1411.09 | -99.00 | 68.63 | 104.15 | 0.00 | |
| 1520.00† | 9.029 | 56.617 | 1509.85 | -111.46 | 77.26 | 117.25 | 0.00 | |
| 1620.00† | 9.029 | 56.617 | 1608.61 | -123.92 | 85.90 | 130.36 | 0.00 | |
| 1720.00† | 9.029 | 56.617 | 1707.37 | -136.38 | 94.53 | 143.46 | 0.00 | |
| 1820.00† | 9.029 | 56.617 | 1806.13 | -148.83 | 103.17 | 156.56 | 0.00 | |
| 1920.00† | 9.029 | 56.617 | 1904.89 | -161.29 | 111.80 | 169.67 | 0.00 | |
| 2020.00† | 9.029 | 56.617 | 2003.65 | -173.75 | 120.44 | 182.77 | 0.00 | |
| 2120.00† | 9.029 | 56.617 | 2102.41 | -186.21 | 129.07 | 195.88 | 0.00 | |
| 2220.00† | 9.029 | 56.617 | 2201.18 | -198.66 | 137.71 | 208.98 | 0.00 | |
| 2320.00† | 9.029 | 56.617 | 2299.94 | -211.12 | 146.34 | 222.09 | 0.00 | |
| 2420.00† | 9.029 | 56.617 | 2398.70 | -223.58 | 154.98 | 235.19 | 0.00 | |
| 2520.00† | 9.029 | 56.617 | 2497.46 | -236.04 | 163.61 | 248.29 | 0.00 | |
| 2620.00† | 9.029 | 56.617 | 2596.22 | -248.49 | 172.25 | 261.40 | 0.00 | |



Planned Wellpath Report

GREELEY-ROTHE FEDERAL 12C-2-L PWP (REV-A.0)

Page 3 of 7



| REFERENCE WELLPATH IDENTIFICATION | | | |
|-----------------------------------|--------------------------------|----------|--|
| Operator | SRC ENERGY | Slot | SLOT#17 GREELEY-ROTHE FEDERAL 12C-2-L (1083'FSL & 294'FEL, SEC.01) |
| Area | COLORADO | Well | GREELEY-ROTHE FEDERAL 12C-2-L |
| Field | WELD COUNTY (NAD83,TRUE NORTH) | Wellbore | GREELEY-ROTHE FEDERAL 12C-2-L PWB |
| Facility | SEC.01-T05N-R67W | | |

| WELLPATH DATA (180 stations) † = interpolated/extrapolated station | | | | | | | | |
|--|--------------------|----------------|-------------|-------------------|---------------|--------------|------------------|----------|
| MD [ft] | Inclination [°] | Azimuth [°] | TVD [ft] | Vert Sect [ft] | North [ft] | East [ft] | DLS [°/100ft] | Comments |
| 2720.00† | 9.029 | 56.617 | 2694.98 | -260.95 | 180.88 | 274.50 | 0.00 | |
| 2820.00† | 9.029 | 56.617 | 2793.74 | -273.41 | 189.52 | 287.61 | 0.00 | |
| 2920.00† | 9.029 | 56.617 | 2892.50 | -285.87 | 198.15 | 300.71 | 0.00 | |
| 3020.00† | 9.029 | 56.617 | 2991.26 | -298.32 | 206.79 | 313.82 | 0.00 | |
| 3120.00† | 9.029 | 56.617 | 3090.02 | -310.78 | 215.42 | 326.92 | 0.00 | |
| 3220.00† | 9.029 | 56.617 | 3188.78 | -323.24 | 224.06 | 340.03 | 0.00 | |
| 3320.00† | 9.029 | 56.617 | 3287.55 | -335.70 | 232.69 | 353.13 | 0.00 | |
| 3420.00† | 9.029 | 56.617 | 3386.31 | -348.15 | 241.33 | 366.23 | 0.00 | |
| 3520.00† | 9.029 | 56.617 | 3485.07 | -360.61 | 249.96 | 379.34 | 0.00 | |
| 3620.00† | 9.029 | 56.617 | 3583.83 | -373.07 | 258.60 | 392.44 | 0.00 | |
| 3720.00† | 9.029 | 56.617 | 3682.59 | -385.53 | 267.23 | 405.55 | 0.00 | |
| 3820.00† | 9.029 | 56.617 | 3781.35 | -397.98 | 275.87 | 418.65 | 0.00 | |
| 3920.00† | 9.029 | 56.617 | 3880.11 | -410.44 | 284.50 | 431.76 | 0.00 | |
| 4020.00† | 9.029 | 56.617 | 3978.87 | -422.90 | 293.14 | 444.86 | 0.00 | |
| 4120.00† | 9.029 | 56.617 | 4077.63 | -435.36 | 301.77 | 457.97 | 0.00 | |
| 4220.00† | 9.029 | 56.617 | 4176.39 | -447.81 | 310.41 | 471.07 | 0.00 | |
| 4320.00† | 9.029 | 56.617 | 4275.15 | -460.27 | 319.04 | 484.17 | 0.00 | |
| 4420.00† | 9.029 | 56.617 | 4373.91 | -472.73 | 327.68 | 497.28 | 0.00 | |
| 4520.00† | 9.029 | 56.617 | 4472.68 | -485.18 | 336.31 | 510.38 | 0.00 | |
| 4620.00† | 9.029 | 56.617 | 4571.44 | -497.64 | 344.95 | 523.49 | 0.00 | |
| 4720.00† | 9.029 | 56.617 | 4670.20 | -510.10 | 353.58 | 536.59 | 0.00 | |
| 4820.00† | 9.029 | 56.617 | 4768.96 | -522.56 | 362.22 | 549.70 | 0.00 | |
| 4920.00† | 9.029 | 56.617 | 4867.72 | -535.01 | 370.85 | 562.80 | 0.00 | |
| 5020.00† | 9.029 | 56.617 | 4966.48 | -547.47 | 379.49 | 575.91 | 0.00 | |
| 5120.00† | 9.029 | 56.617 | 5065.24 | -559.93 | 388.12 | 589.01 | 0.00 | |
| 5220.00† | 9.029 | 56.617 | 5164.00 | -572.39 | 396.76 | 602.11 | 0.00 | |
| 5320.00† | 9.029 | 56.617 | 5262.76 | -584.84 | 405.39 | 615.22 | 0.00 | |
| 5420.00† | 9.029 | 56.617 | 5361.52 | -597.30 | 414.03 | 628.32 | 0.00 | |
| 5520.00† | 9.029 | 56.617 | 5460.28 | -609.76 | 422.66 | 641.43 | 0.00 | |
| 5620.00† | 9.029 | 56.617 | 5559.05 | -622.22 | 431.30 | 654.53 | 0.00 | |



Planned Wellpath Report

GREELEY-ROTHE FEDERAL 12C-2-L PWP (REV-A.0)

Page 4 of 7



| REFERENCE WELLPATH IDENTIFICATION | | | |
|-----------------------------------|--------------------------------|----------|--|
| Operator | SRC ENERGY | Slot | SLOT#17 GREELEY-ROTHE FEDERAL 12C-2-L (1083'FSL & 294'FEL, SEC.01) |
| Area | COLORADO | Well | GREELEY-ROTHE FEDERAL 12C-2-L |
| Field | WELD COUNTY (NAD83,TRUE NORTH) | Wellbore | GREELEY-ROTHE FEDERAL 12C-2-L PWB |
| Facility | SEC.01-T05N-R67W | | |

| WELLPATH DATA (180 stations) † = interpolated/extrapolated station | | | | | | | | |
|--|--------------------|----------------|-------------|-------------------|---------------|--------------|------------------|----------------|
| MD [ft] | Inclination [°] | Azimuth [°] | TVD [ft] | Vert Sect [ft] | North [ft] | East [ft] | DLS [°/100ft] | Comments |
| 5720.00† | 9.029 | 56.617 | 5657.81 | -634.67 | 439.93 | 667.64 | 0.00 | |
| 5820.00† | 9.029 | 56.617 | 5756.57 | -647.13 | 448.57 | 680.74 | 0.00 | |
| 5920.00† | 9.029 | 56.617 | 5855.33 | -659.59 | 457.20 | 693.85 | 0.00 | |
| 6020.00† | 9.029 | 56.617 | 5954.09 | -672.05 | 465.84 | 706.95 | 0.00 | |
| 6120.00† | 9.029 | 56.617 | 6052.85 | -684.50 | 474.47 | 720.05 | 0.00 | |
| 6220.00† | 9.029 | 56.617 | 6151.61 | -696.96 | 483.11 | 733.16 | 0.00 | |
| 6320.00† | 9.029 | 56.617 | 6250.37 | -709.42 | 491.74 | 746.26 | 0.00 | |
| 6420.00† | 9.029 | 56.617 | 6349.13 | -721.88 | 500.38 | 759.37 | 0.00 | |
| 6509.39 | 9.029 | 56.617 | 6437.41 | -733.01 | 508.10 | 771.08 | 0.00 | End of Tangent |
| 6520.00† | 8.258 | 52.861 | 6447.90 | -734.25 | 509.02 | 772.38 | 9.00 | |
| 6620.00† | 5.654 | 334.570 | 6547.35 | -737.23 | 517.82 | 776.00 | 9.00 | |
| 6720.00† | 12.543 | 294.206 | 6646.11 | -724.58 | 526.74 | 763.96 | 9.00 | |
| 6820.00† | 21.077 | 283.986 | 6741.77 | -696.62 | 535.55 | 736.55 | 9.00 | |
| 6920.00† | 29.878 | 279.550 | 6831.97 | -654.02 | 544.05 | 694.45 | 9.00 | |
| 7020.00† | 38.764 | 277.004 | 6914.48 | -597.85 | 552.02 | 638.70 | 9.00 | |
| 7120.00† | 47.688 | 275.289 | 6987.27 | -529.47 | 559.26 | 570.67 | 9.00 | |
| 7220.00† | 56.631 | 274.004 | 7048.56 | -450.59 | 565.59 | 492.04 | 9.00 | |
| 7320.00† | 65.585 | 272.960 | 7096.83 | -363.13 | 570.87 | 404.74 | 9.00 | |
| 7420.00† | 74.545 | 272.055 | 7130.89 | -269.26 | 574.96 | 310.91 | 9.00 | |
| 7520.00† | 83.508 | 271.226 | 7149.90 | -171.28 | 577.75 | 212.88 | 9.00 | |
| 7594.38 | 90.176 | 270.630 | 7154.00† | -97.16 | 578.96 | 138.67 | 9.00 | End of 3D Arc |
| 7620.00† | 90.176 | 270.630 | 7153.92 | -71.59 | 579.24 | 113.05 | 0.00 | |
| 7720.00† | 90.176 | 270.630 | 7153.61 | 28.23 | 580.34 | 13.06 | 0.00 | |
| 7820.00† | 90.176 | 270.630 | 7153.31 | 128.05 | 581.44 | -86.94 | 0.00 | |
| 7920.00† | 90.176 | 270.630 | 7153.00 | 227.87 | 582.54 | -186.93 | 0.00 | |
| 8020.00† | 90.176 | 270.630 | 7152.69 | 327.69 | 583.64 | -286.92 | 0.00 | |
| 8120.00† | 90.176 | 270.630 | 7152.39 | 427.50 | 584.74 | -386.92 | 0.00 | |
| 8220.00† | 90.176 | 270.630 | 7152.08 | 527.32 | 585.84 | -486.91 | 0.00 | |
| 8320.00† | 90.176 | 270.630 | 7151.77 | 627.14 | 586.94 | -586.90 | 0.00 | |
| 8420.00† | 90.176 | 270.630 | 7151.47 | 726.96 | 588.04 | -686.90 | 0.00 | |



Planned Wellpath Report

GREELEY-ROTHE FEDERAL 12C-2-L PWP (REV-A.0)

Page 5 of 7



| REFERENCE WELLPATH IDENTIFICATION | | | |
|-----------------------------------|--------------------------------|----------|--|
| Operator | SRC ENERGY | Slot | SLOT#17 GREELEY-ROTHE FEDERAL 12C-2-L (1083'FSL & 294'FEL, SEC.01) |
| Area | COLORADO | Well | GREELEY-ROTHE FEDERAL 12C-2-L |
| Field | WELD COUNTY (NAD83,TRUE NORTH) | Wellbore | GREELEY-ROTHE FEDERAL 12C-2-L PWB |
| Facility | SEC.01-T05N-R67W | | |

| WELLPATH DATA (180 stations) † = interpolated/extrapolated station | | | | | | | | |
|--|--------------------|----------------|-------------|-------------------|---------------|--------------|------------------|----------|
| MD [ft] | Inclination [°] | Azimuth [°] | TVD [ft] | Vert Sect [ft] | North [ft] | East [ft] | DLS [°/100ft] | Comments |
| 8520.00† | 90.176 | 270.630 | 7151.16 | 826.78 | 589.14 | -786.89 | 0.00 | |
| 8620.00† | 90.176 | 270.630 | 7150.85 | 926.60 | 590.24 | -886.88 | 0.00 | |
| 8720.00† | 90.176 | 270.630 | 7150.54 | 1026.42 | 591.34 | -986.88 | 0.00 | |
| 8820.00† | 90.176 | 270.630 | 7150.24 | 1126.24 | 592.44 | -1086.87 | 0.00 | |
| 8920.00† | 90.176 | 270.630 | 7149.93 | 1226.05 | 593.54 | -1186.86 | 0.00 | |
| 9020.00† | 90.176 | 270.630 | 7149.62 | 1325.87 | 594.64 | -1286.86 | 0.00 | |
| 9120.00† | 90.176 | 270.630 | 7149.32 | 1425.69 | 595.74 | -1386.85 | 0.00 | |
| 9220.00† | 90.176 | 270.630 | 7149.01 | 1525.51 | 596.84 | -1486.84 | 0.00 | |
| 9320.00† | 90.176 | 270.630 | 7148.70 | 1625.33 | 597.94 | -1586.84 | 0.00 | |
| 9420.00† | 90.176 | 270.630 | 7148.40 | 1725.15 | 599.04 | -1686.83 | 0.00 | |
| 9520.00† | 90.176 | 270.630 | 7148.09 | 1824.97 | 600.15 | -1786.82 | 0.00 | |
| 9620.00† | 90.176 | 270.630 | 7147.78 | 1924.79 | 601.25 | -1886.82 | 0.00 | |
| 9720.00† | 90.176 | 270.630 | 7147.47 | 2024.60 | 602.35 | -1986.81 | 0.00 | |
| 9820.00† | 90.176 | 270.630 | 7147.17 | 2124.42 | 603.45 | -2086.81 | 0.00 | |
| 9920.00† | 90.176 | 270.630 | 7146.86 | 2224.24 | 604.55 | -2186.80 | 0.00 | |
| 10020.00† | 90.176 | 270.630 | 7146.55 | 2324.06 | 605.65 | -2286.79 | 0.00 | |
| 10120.00† | 90.176 | 270.630 | 7146.25 | 2423.88 | 606.75 | -2386.79 | 0.00 | |
| 10220.00† | 90.176 | 270.630 | 7145.94 | 2523.70 | 607.85 | -2486.78 | 0.00 | |
| 10320.00† | 90.176 | 270.630 | 7145.63 | 2623.52 | 608.95 | -2586.77 | 0.00 | |
| 10420.00† | 90.176 | 270.630 | 7145.33 | 2723.34 | 610.05 | -2686.77 | 0.00 | |
| 10520.00† | 90.176 | 270.630 | 7145.02 | 2823.15 | 611.15 | -2786.76 | 0.00 | |
| 10620.00† | 90.176 | 270.630 | 7144.71 | 2922.97 | 612.25 | -2886.75 | 0.00 | |
| 10720.00† | 90.176 | 270.630 | 7144.40 | 3022.79 | 613.35 | -2986.75 | 0.00 | |
| 10820.00† | 90.176 | 270.630 | 7144.10 | 3122.61 | 614.45 | -3086.74 | 0.00 | |
| 10920.00† | 90.176 | 270.630 | 7143.79 | 3222.43 | 615.55 | -3186.73 | 0.00 | |
| 11020.00† | 90.176 | 270.630 | 7143.48 | 3322.25 | 616.65 | -3286.73 | 0.00 | |
| 11120.00† | 90.176 | 270.630 | 7143.18 | 3422.07 | 617.75 | -3386.72 | 0.00 | |
| 11220.00† | 90.176 | 270.630 | 7142.87 | 3521.89 | 618.85 | -3486.71 | 0.00 | |
| 11320.00† | 90.176 | 270.630 | 7142.56 | 3621.70 | 619.95 | -3586.71 | 0.00 | |
| 11420.00† | 90.176 | 270.630 | 7142.26 | 3721.52 | 621.05 | -3686.70 | 0.00 | |



Planned Wellpath Report

GREELEY-ROTHE FEDERAL 12C-2-L PWP (REV-A.0)

Page 6 of 7



| REFERENCE WELLPATH IDENTIFICATION | | | |
|-----------------------------------|--------------------------------|----------|--|
| Operator | SRC ENERGY | Slot | SLOT#17 GREELEY-ROTHE FEDERAL 12C-2-L (1083'FSL & 294'FEL, SEC.01) |
| Area | COLORADO | Well | GREELEY-ROTHE FEDERAL 12C-2-L |
| Field | WELD COUNTY (NAD83,TRUE NORTH) | Wellbore | GREELEY-ROTHE FEDERAL 12C-2-L PWB |
| Facility | SEC.01-T05N-R67W | | |

| WELLPATH DATA (180 stations) † = interpolated/extrapolated station | | | | | | | | |
|--|--------------------|----------------|-------------|-------------------|---------------|--------------|------------------|----------|
| MD [ft] | Inclination [°] | Azimuth [°] | TVD [ft] | Vert Sect [ft] | North [ft] | East [ft] | DLS [°/100ft] | Comments |
| 11520.00† | 90.176 | 270.630 | 7141.95 | 3821.34 | 622.15 | -3786.69 | 0.00 | |
| 11620.00† | 90.176 | 270.630 | 7141.64 | 3921.16 | 623.25 | -3886.69 | 0.00 | |
| 11720.00† | 90.176 | 270.630 | 7141.33 | 4020.98 | 624.35 | -3986.68 | 0.00 | |
| 11820.00† | 90.176 | 270.630 | 7141.03 | 4120.80 | 625.45 | -4086.67 | 0.00 | |
| 11920.00† | 90.176 | 270.630 | 7140.72 | 4220.62 | 626.55 | -4186.67 | 0.00 | |
| 12020.00† | 90.176 | 270.630 | 7140.41 | 4320.44 | 627.66 | -4286.66 | 0.00 | |
| 12120.00† | 90.176 | 270.630 | 7140.11 | 4420.25 | 628.76 | -4386.66 | 0.00 | |
| 12220.00† | 90.176 | 270.630 | 7139.80 | 4520.07 | 629.86 | -4486.65 | 0.00 | |
| 12320.00† | 90.176 | 270.630 | 7139.49 | 4619.89 | 630.96 | -4586.64 | 0.00 | |
| 12420.00† | 90.176 | 270.630 | 7139.19 | 4719.71 | 632.06 | -4686.64 | 0.00 | |
| 12520.00† | 90.176 | 270.630 | 7138.88 | 4819.53 | 633.16 | -4786.63 | 0.00 | |
| 12620.00† | 90.176 | 270.630 | 7138.57 | 4919.35 | 634.26 | -4886.62 | 0.00 | |
| 12720.00† | 90.176 | 270.630 | 7138.26 | 5019.17 | 635.36 | -4986.62 | 0.00 | |
| 12820.00† | 90.176 | 270.630 | 7137.96 | 5118.98 | 636.46 | -5086.61 | 0.00 | |
| 12920.00† | 90.176 | 270.630 | 7137.65 | 5218.80 | 637.56 | -5186.60 | 0.00 | |
| 13020.00† | 90.176 | 270.630 | 7137.34 | 5318.62 | 638.66 | -5286.60 | 0.00 | |
| 13120.00† | 90.176 | 270.630 | 7137.04 | 5418.44 | 639.76 | -5386.59 | 0.00 | |
| 13220.00† | 90.176 | 270.630 | 7136.73 | 5518.26 | 640.86 | -5486.58 | 0.00 | |
| 13320.00† | 90.176 | 270.630 | 7136.42 | 5618.08 | 641.96 | -5586.58 | 0.00 | |
| 13420.00† | 90.176 | 270.630 | 7136.12 | 5717.90 | 643.06 | -5686.57 | 0.00 | |
| 13520.00† | 90.176 | 270.630 | 7135.81 | 5817.72 | 644.16 | -5786.56 | 0.00 | |
| 13620.00† | 90.176 | 270.630 | 7135.50 | 5917.53 | 645.26 | -5886.56 | 0.00 | |
| 13720.00† | 90.176 | 270.630 | 7135.19 | 6017.35 | 646.36 | -5986.55 | 0.00 | |
| 13820.00† | 90.176 | 270.630 | 7134.89 | 6117.17 | 647.46 | -6086.54 | 0.00 | |
| 13920.00† | 90.176 | 270.630 | 7134.58 | 6216.99 | 648.56 | -6186.54 | 0.00 | |
| 14020.00† | 90.176 | 270.630 | 7134.27 | 6316.81 | 649.66 | -6286.53 | 0.00 | |
| 14120.00† | 90.176 | 270.630 | 7133.97 | 6416.63 | 650.76 | -6386.52 | 0.00 | |
| 14220.00† | 90.176 | 270.630 | 7133.66 | 6516.45 | 651.86 | -6486.52 | 0.00 | |
| 14320.00† | 90.176 | 270.630 | 7133.35 | 6616.27 | 652.96 | -6586.51 | 0.00 | |
| 14420.00† | 90.176 | 270.630 | 7133.05 | 6716.08 | 654.06 | -6686.51 | 0.00 | |



Planned Wellpath Report

GREELEY-ROTHE FEDERAL 12C-2-L PWP (REV-A.0)

Page 7 of 7



| REFERENCE WELLPATH IDENTIFICATION | | | |
|-----------------------------------|--------------------------------|----------|--|
| Operator | SRC ENERGY | Slot | SLOT#17 GREELEY-ROTHE FEDERAL 12C-2-L (1083'FSL & 294'FEL, SEC.01) |
| Area | COLORADO | Well | GREELEY-ROTHE FEDERAL 12C-2-L |
| Field | WELD COUNTY (NAD83,TRUE NORTH) | Wellbore | GREELEY-ROTHE FEDERAL 12C-2-L PWB |
| Facility | SEC.01-T05N-R67W | | |

| WELLPATH DATA (180 stations) † = interpolated/extrapolated station | | | | | | | | |
|--|--------------------|----------------|----------------------|-------------------|---------------|--------------|------------------|----------------|
| MD [ft] | Inclination [°] | Azimuth [°] | TVD [ft] | Vert Sect [ft] | North [ft] | East [ft] | DLS [°/100ft] | Comments |
| 14520.00† | 90.176 | 270.630 | 7132.74 | 6815.90 | 655.17 | -6786.50 | 0.00 | |
| 14620.00† | 90.176 | 270.630 | 7132.43 | 6915.72 | 656.27 | -6886.49 | 0.00 | |
| 14720.00† | 90.176 | 270.630 | 7132.12 | 7015.54 | 657.37 | -6986.49 | 0.00 | |
| 14820.00† | 90.176 | 270.630 | 7131.82 | 7115.36 | 658.47 | -7086.48 | 0.00 | |
| 14920.00† | 90.176 | 270.630 | 7131.51 | 7215.18 | 659.57 | -7186.47 | 0.00 | |
| 15020.00† | 90.176 | 270.630 | 7131.20 | 7315.00 | 660.67 | -7286.47 | 0.00 | |
| 15120.00† | 90.176 | 270.630 | 7130.90 | 7414.82 | 661.77 | -7386.46 | 0.00 | |
| 15220.00† | 90.176 | 270.630 | 7130.59 | 7514.63 | 662.87 | -7486.45 | 0.00 | |
| 15320.00† | 90.176 | 270.630 | 7130.28 | 7614.45 | 663.97 | -7586.45 | 0.00 | |
| 15420.00† | 90.176 | 270.630 | 7129.98 | 7714.27 | 665.07 | -7686.44 | 0.00 | |
| 15520.00† | 90.176 | 270.630 | 7129.67 | 7814.09 | 666.17 | -7786.43 | 0.00 | |
| 15620.00† | 90.176 | 270.630 | 7129.36 | 7913.91 | 667.27 | -7886.43 | 0.00 | |
| 15720.00† | 90.176 | 270.630 | 7129.05 | 8013.73 | 668.37 | -7986.42 | 0.00 | |
| 15820.00† | 90.176 | 270.630 | 7128.75 | 8113.55 | 669.47 | -8086.41 | 0.00 | |
| 15920.00† | 90.176 | 270.630 | 7128.44 | 8213.37 | 670.57 | -8186.41 | 0.00 | |
| 16020.00† | 90.176 | 270.630 | 7128.13 | 8313.18 | 671.67 | -8286.40 | 0.00 | |
| 16120.00† | 90.176 | 270.630 | 7127.83 | 8413.00 | 672.77 | -8386.39 | 0.00 | |
| 16220.00† | 90.176 | 270.630 | 7127.52 | 8512.82 | 673.87 | -8486.39 | 0.00 | |
| 16320.00† | 90.176 | 270.630 | 7127.21 | 8612.64 | 674.97 | -8586.38 | 0.00 | |
| 16420.00† | 90.176 | 270.630 | 7126.90 | 8712.46 | 676.07 | -8686.37 | 0.00 | |
| 16520.00† | 90.176 | 270.630 | 7126.60 | 8812.28 | 677.17 | -8786.37 | 0.00 | |
| 16620.00† | 90.176 | 270.630 | 7126.29 | 8912.10 | 678.27 | -8886.36 | 0.00 | |
| 16720.00† | 90.176 | 270.630 | 7125.98 | 9011.92 | 679.37 | -8986.36 | 0.00 | |
| 16820.00† | 90.176 | 270.630 | 7125.68 | 9111.73 | 680.47 | -9086.35 | 0.00 | |
| 16920.00† | 90.176 | 270.630 | 7125.37 | 9211.55 | 681.57 | -9186.34 | 0.00 | |
| 17020.00† | 90.176 | 270.630 | 7125.06 | 9311.37 | 682.68 | -9286.34 | 0.00 | |
| 17120.00† | 90.176 | 270.630 | 7124.76 | 9411.19 | 683.78 | -9386.33 | 0.00 | |
| 17220.00† | 90.176 | 270.630 | 7124.45 | 9511.01 | 684.88 | -9486.32 | 0.00 | |
| 17320.00† | 90.176 | 270.630 | 7124.14 | 9610.83 | 685.98 | -9586.32 | 0.00 | |
| 17366.24 | 90.176 | 270.630 | 7124.00 ² | 9656.98 | 686.49 | -9632.55 | 0.00 | End of Tangent |

| HOLE & CASING SECTIONS | | | | | | | | | |
|--|------------------|----------------|------------------|-------------------|-----------------|-------------------|-------------------|-----------------|-----------------|
| - Ref Wellbore: GREELEY-ROTHER FEDERAL 12C-2-L PWB Ref Wellpath: GREELEY-ROTHER FEDERAL 12C-2-L PWP (REV-A.0) | | | | | | | | | |
| String/Diameter | Start MD [ft] | End MD [ft] | Interval [ft] | Start TVD [ft] | End TVD [ft] | Start N/S [ft] | Start E/W [ft] | End N/S [ft] | End E/W [ft] |
| 13.5in Open Hole | 20.00 | 1750.00 | 1730.00 | 20.00 | 1737.00 | 0.00 | 0.00 | 97.12 | 147.39 |
| 9.625in Casing Surface | 20.00 | 1750.00 | 1730.00 | 20.00 | 1737.00 | 0.00 | 0.00 | 97.12 | 147.39 |
| 8.5in Open Hole | 1750.00 | 17366.24 | 15616.24 | 1737.00 | 7124.00 | 97.12 | 147.39 | 686.49 | -9632.55 |

| TARGETS | | | | | | | | | |
|---|------------|-------------|---------------|--------------|----------------------|-----------------------|----------------|-----------------|---------|
| Name | MD [ft] | TVD [ft] | North [ft] | East [ft] | Grid East [US ft] | Grid North [US ft] | Latitude | Longitude | Shape |
| SEC.01-T05N-R67W | | 22.00 | 1284.61 | -0.85 | 3185545.50 | 1399477.36 | 40°25'40.991"N | 104°50'00.640"W | polygon |
| | | | | | | | | | |
| SEC.02-T05N-R67W | | 22.00 | 1284.61 | -0.85 | 3185545.50 | 1399477.36 | 40°25'40.991"N | 104°50'00.640"W | polygon |
| | | | | | | | | | |
| 2) GREELEY ROTHE FEDERAL 12C-2-L BHL ON PLAT (1864'FSL & 150'FWL, SEC.02) | 17366.24 | 7124.00 | 686.49 | -9632.55 | 3175918.95 | 1398806.88 | 40°25'35.062"N | 104°52'05.182"W | circle |
| | | | | | | | | | |
| 1) GREELEY ROTHE FEDERAL 12C-2-L TOP OF PROD ON PLAT (1657'FSL & 150'FEL, SEC.01) | 7594.38 | 7154.00 | 578.96 | 138.67 | 3185690.31 | 1398772.80 | 40°25'34.018"N | 104°49'58.836"W | circle |
| | | | | | | | | | |

| SURVEY PROGRAM - Ref Wellbore: GREELEY-ROTHER FEDERAL 12C-2-L PWB Ref Wellpath: GREELEY-ROTHER FEDERAL 12C-2-L PWP (REV-A.0) | | | | |
|---|----------------|---|---------------------|---------------------------------------|
| Start MD [ft] | End MD [ft] | Positional Uncertainty Model | Log Name/Comment | Wellbore |
| 20.00 | 1750.00 | Custom BHI NaviTrak (Standard Rotating+Axial Corr) (Rockies 0.03Gt model) | | GREELEY-ROTHER FEDERAL 12C-2-L PWB |
| 1750.00 | 17366.24 | Custom BHI AutoTrak Curve (IFR1, Short) (Rockies 0.03Gt model) | | GREELEY-ROTHER FEDERAL 12C-2-L PWB |