

SRC ENERGY

Location: COLORADO Slot: SLOT#23 GREELEY-ROTH 34N-2B-L (963°FSL & 294°FEL, SEC.01)
Field: WELD COUNTY (NAD83,TRUE NORTH) Well: GREELEY-ROTH 34N-2B-L
Facility: SEC.01-T05N-R67W Wellbore: GREELEY-ROTH 34N-2B-L PWB

Plot reference wellpath is GREELEY-ROTH 34N-2B-L PWB (REV-B.1)	Grid System: NAD83 / Lambert Colorado SP, Northern Zone (501), US feet
True vertical depths are referenced to PRECISION 462 (20") (RKB)	* = Wellpath was transformed from a different geodetic datum
Measured depths are referenced to PRECISION 462 (20") (RKB)	North Reference: True north
PRECISION 462 (20") (RKB) to Mean Sea Level: 4893 feet	Scale: True distance
Mean Sea Level to Mud line (At Slot: SLOT#23 GREELEY-ROTH 34N-2B-L (963°FSL & 294°FEL, SEC.01)): 0 feet	Depths are in feet
Coordinates are in feet referenced to Slot	Created by: doddanna on 2017-11-28
	Database: WellArchitectDB

Location Information

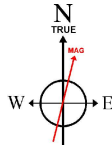
Facility Name				Grid East (US R)	Grid North (US R)	Latitude	Longitude
SEC.01-T05N-R67W				3185545.499	1399477.355	40°25'40.991"N	104°50'00.640"W
Slot	Local N (ft)	Local E (ft)	Grid East (US R)	Grid North (US R)	Latitude	Longitude	
SLOT#23 GREELEY-ROTH 34N-2B-L (963°FSL & 294°FEL, SEC.01)	-1404.83	2.24	3185558.300	1399672.634	40°25'27.109"N	104°50'00.611"W	
PRECISION 462 (20") (RKB) to Mud line (At Slot: SLOT#23 GREELEY-ROTH 34N-2B-L (963°FSL & 294°FEL, SEC.01))						4893ft	
Mean Sea Level to Mud line (At Slot: SLOT#23 GREELEY-ROTH 34N-2B-L (963°FSL & 294°FEL, SEC.01))						0ft	
PRECISION 462 (20") (RKB) to Mean Sea Level						4893ft	

Survey Program

Start MD (ft)	End MD (ft)	Tool	Model	Log Name/Comment	Wellbore
20.00	1750.00	BHI NavTrak	Custom BHI NavTrak (FR1, Standard Rotating+Axial Corr) (Rockies 0.03Gi model)		GREELEY-ROTH 34N-2B-L PWB
1750.00	17161.54	BHI AutoTrak Curve	Custom BHI AutoTrak Curve (FR1, Short) (Rockies 0.03Gi model)		GREELEY-ROTH 34N-2B-L PWB



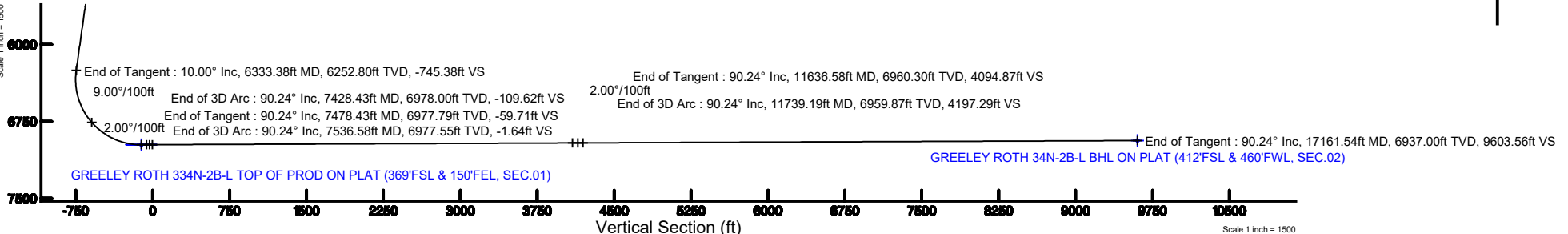
SRC ENERGY



BGGM (1900.0 to 2018.0) Dip: 66.87° Field: 52416.1 nT
Magnetic North is 8.39 degrees East of True North (at 9/22/2017)

To correct azimuth from Magnetic to True add 8.39 degrees

True Vertical Depth (ft)
Scale 1 inch = 1500



Azimuth 266.15° with reference 0.00 N, 0.00 E

Targets

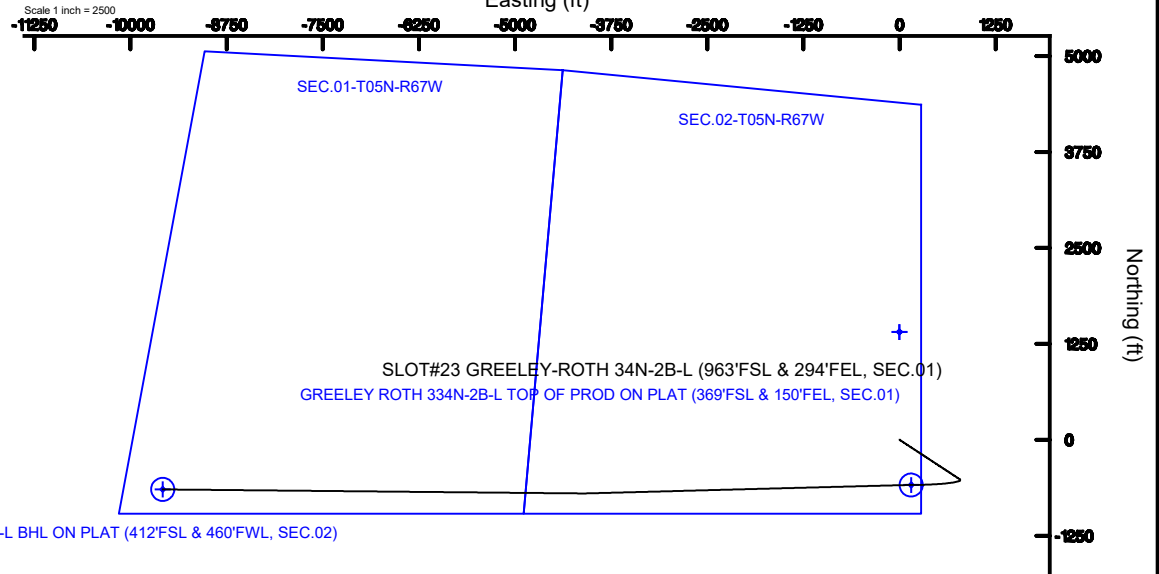
Name	MD (ft)	TVD (ft)	Local N (ft)	Local E (ft)	Grid East (US R)	Grid North (US R)	Latitude	Longitude
SEC.01-T05N-R67W	23.00	1404.83	-2.24	3185545.50	1399477.36	40°25'40.991"N	104°50'00.640"W	
SEC.02-T05N-R67W	23.00	1404.83	-2.24	3185545.50	1399477.36	40°25'40.991"N	104°50'00.640"W	
GREELEY ROTH 34N-2B-L BHL ON PLAT (412FSL & 460FEL, SEC.02)	17161.54	6937.00	-645.51	-9581.84	3185712.21	1397355.16	40°25'20.712"N	104°52'04.501"W
GREELEY ROTH 34N-2B-L TOP OF PROD ON PLAT (369FSL & 150FEL, SEC.01)	7428.43	6978.00	-588.37	149.50	3185712.21	1397485.43	40°25'21.295"N	104°49'58.679"W

Hole and Casing Sections

Name	Start MD (ft)	End MD (ft)	Interval (ft)	Start TVD (ft)	End TVD (ft)	Start Local N (ft)	Start Local E (ft)	End Local N (ft)	End Local E (ft)	Wellbore
13.5in Open Hole	20.00	1750.00	1730.00	20.00	1739.10	0.00	0.00	-76.35	116.23	GREELEY-ROTH 34N-2B-L PWB
9.625in Casing Surface	20.00	1750.00	1730.00	20.00	1739.10	0.00	0.00	-76.35	116.23	GREELEY-ROTH 34N-2B-L PWB
8.5in Open Hole	1750.00	17161.54	15411.54	1739.10	6937.00	-76.35	116.23	-645.51	-9581.84	GREELEY-ROTH 34N-2B-L PWB

Well Profile Data

Design Comment	MD (ft)	Inc (°)	Az (°)	TVD (ft)	Local N (ft)	Local E (ft)	DLS (°/100ft)	VS (ft)
Tie On	20.00	0.000	123.301	20.00	0.00	0.00	0.00	0.00
End of Tangent	700.00	0.000	123.301	700.00	0.00	0.00	0.00	0.00
End of Build	1200.18	10.004	123.301	1197.64	-23.91	36.40	2.00	-34.71
End of Tangent	6333.38	10.004	123.301	6252.80	-513.48	781.66	0.00	-745.38
End of 3D Arc	7428.43	90.241	269.663	6978.00	-588.37	149.50	9.00	-109.62
End of Tangent	7478.43	90.241	269.663	6977.79	-588.66	99.50	0.00	-59.71
End of 3D Arc	7536.58	90.241	268.500	6977.55	-589.59	41.36	2.00	-1.64
End of Tangent	11636.58	90.241	268.500	6960.30	-696.92	-4057.20	0.00	4094.87
End of 3D Arc	11739.19	90.242	270.552	6959.87	-697.77	-4159.80	2.00	4197.29
End of Tangent	17161.54	90.242	270.552	6937.00	-645.51	-9581.84	0.00	9603.56



Scale 1 inch = 1500

GREELEY-ROTH_34N-2B-L_PWP__REV-B.1_.las

~VERSION INFORMATION

VERS. 2.0 : CWLS LOG ASCII STANDARD-VERSION 2.0

WRAP. NO : ASCII DATA SECTION CONTAINS ONE ROW PER WELLPATH STATION

~WELL INFORMATION

#MNEM	.UNITS	DATA	:DESCRIPTION
#----	.-----	----	:-----
STRT	.ft	0.00	:START MD
STOP	.ft	17161.54	:STOP MD
STEP	.ft	0.0	:STEP (non-uniform increment)
NULL	.	-999.99	:NULL
COMP	.	SRC ENERGY	:OPERATOR
WELL	.	GREELEY-ROTH 34N-2B-L	:WELL
FLD	.	WELD COUNTY (NAD83,TRUE NORTH)	:FIELD
LOC	.	COLORADO	:AREA (aka: Location)
CNTY	.	N/A	:COUNTY
STAT	.	N/A	:STATE
CTRY	.	N/A	:COUNTRY
SRVC	.	Baker Hughes	:CONTRACTOR
DATE	.	11/27/2017	:LOG REV DATE
API	.		:API NUMBER

~OTHER INFORMATION

#Software: WellArchitect(R) Version 5.0

#MNEM	.UNITS	DATA	:DESCRIPTION
#----	.-----	----	:-----
WPTYPE	.	PLANNED WELLPATH	:WELLPATH TYPE
FACILITY	.	SEC.01-T05N-R67W	:FACILITY
SLOT	.	SLOT#23 GREELEY-ROTH 34N-2B-L (963'FSL & 294'FEL, SEC.01)	:SLOT
WELLBORE	.	GREELEY-ROTH 34N-2B-L PWB	:WELLBORE
WELLPATH	.	GREELEY-ROTH 34N-2B-L PWP (REV-B.1)	:WELLPATH
MDREFPT	.	PRECISION 462 (20') (RKB)	:MD REFERENCE POINT
TVDREFPT	.	PRECISION 462 (20') (RKB)	:TVD REFERENCE POINT
LCLREFPT	.	Slot	:LOCAL COORDINATE
REFERENCE PT			
VSAZIMUTH.deg		266.15	:VERTICAL SECTION
AZIMUTH			
VSORIGN .ft		0.00	:VERTICAL SECTION ORIGIN
NORTH			
VSORIGE .ft		0.00	:VERTICAL SECTION ORIGIN
EAST			

~CURVE (WELLPATH) INFORMATION

#MNEM	.UNITS	:DESCRIPTION
#----	.-----	:-----
DEPT	.ft	:MEASURED DEPTH
INC	.deg	:INCLINATION

GREELEY-ROTH_34N-2B-L_PWP__REV-B.1_.las

AZI .deg :AZIMUTH
 TVD .ft :TRUE VERTICAL DEPTH
 SECT .ft :CROSS SECTION (CURTAIN/VERTICAL)
 LOCALN .ft :LOCAL NORTH
 LOCALE .ft :LOCAL EAST
 LAT .deg :LATITUDE
 LONG .deg :LONGITUDE
 DLS .deg/100ft :DOGLEG SEVERITY

~ASCII DATA

0.00	0.00	123.30	0.00	0.00	0.00	0.00	40.4241969
-104.8335031	0.00						
20.00	0.00	123.30	20.00	0.00	0.00	0.00	40.4241969
-104.8335031	0.00						
120.00	0.00	123.30	120.00	0.00	0.00	0.00	40.4241969
-104.8335031	0.00						
220.00	0.00	123.30	220.00	0.00	0.00	0.00	40.4241969
-104.8335031	0.00						
320.00	0.00	123.30	320.00	0.00	0.00	0.00	40.4241969
-104.8335031	0.00						
420.00	0.00	123.30	420.00	0.00	0.00	0.00	40.4241969
-104.8335031	0.00						
520.00	0.00	123.30	520.00	0.00	0.00	0.00	40.4241969
-104.8335031	0.00						
620.00	0.00	123.30	620.00	0.00	0.00	0.00	40.4241969
-104.8335031	0.00						
700.00	0.00	123.30	700.00	0.00	0.00	0.00	40.4241969
-104.8335031	0.00						
720.00	0.40	123.30	720.00	-0.06	-0.04	0.06	40.4241968
-104.8335028	2.00						
820.00	2.40	123.30	819.96	-2.00	-1.38	2.10	40.4241932
-104.8334955	2.00						
920.00	4.40	123.30	919.78	-6.73	-4.64	7.06	40.4241842
-104.8334777	2.00						
1020.00	6.40	123.30	1019.33	-14.23	-9.80	14.92	40.4241700
-104.8334495	2.00						
1120.00	8.40	123.30	1118.50	-24.49	-16.87	25.69	40.4241506
-104.8334108	2.00						
1200.18	10.00	123.30	1197.64	-34.71	-23.91	36.40	40.4241313
-104.8333723	2.00						
1220.00	10.00	123.30	1217.16	-37.46	-25.80	39.28	40.4241261
-104.8333620	0.00						
1320.00	10.00	123.30	1315.64	-51.30	-35.34	53.80	40.4240999
-104.8333098	0.00						
1420.00	10.00	123.30	1414.12	-65.15	-44.88	68.32	40.4240738
-104.8332577	0.00						
1520.00	10.00	123.30	1512.60	-78.99	-54.42	82.84	40.4240476
-104.8332055	0.00						

GREELEY-ROTH_34N-2B-L_PWP__REV-B.1_.las

1620.00	10.00	123.30	1611.08	-92.83	-63.95	97.35	40.4240214
-104.8331534	0.00						
1720.00	10.00	123.30	1709.56	-106.68	-73.49	111.87	40.4239952
-104.8331012	0.00						
1820.00	10.00	123.30	1808.04	-120.52	-83.03	126.39	40.4239690
-104.8330491	0.00						
1920.00	10.00	123.30	1906.52	-134.37	-92.56	140.91	40.4239429
-104.8329970	0.00						
2020.00	10.00	123.30	2005.00	-148.21	-102.10	155.43	40.4239167
-104.8329448	0.00						
2120.00	10.00	123.30	2103.48	-162.06	-111.64	169.95	40.4238905
-104.8328927	0.00						
2220.00	10.00	123.30	2201.96	-175.90	-121.18	184.46	40.4238643
-104.8328405	0.00						
2320.00	10.00	123.30	2300.44	-189.75	-130.71	198.98	40.4238381
-104.8327884	0.00						
2420.00	10.00	123.30	2398.92	-203.59	-140.25	213.50	40.4238120
-104.8327362	0.00						
2520.00	10.00	123.30	2497.40	-217.44	-149.79	228.02	40.4237858
-104.8326841	0.00						
2620.00	10.00	123.30	2595.88	-231.28	-159.33	242.54	40.4237596
-104.8326319	0.00						
2720.00	10.00	123.30	2694.36	-245.13	-168.86	257.06	40.4237334
-104.8325798	0.00						
2820.00	10.00	123.30	2792.84	-258.97	-178.40	271.58	40.4237073
-104.8325277	0.00						
2920.00	10.00	123.30	2891.32	-272.81	-187.94	286.09	40.4236811
-104.8324755	0.00						
3020.00	10.00	123.30	2989.80	-286.66	-197.48	300.61	40.4236549
-104.8324234	0.00						
3120.00	10.00	123.30	3088.28	-300.50	-207.01	315.13	40.4236287
-104.8323712	0.00						
3220.00	10.00	123.30	3186.76	-314.35	-216.55	329.65	40.4236025
-104.8323191	0.00						
3320.00	10.00	123.30	3285.24	-328.19	-226.09	344.17	40.4235764
-104.8322669	0.00						
3420.00	10.00	123.30	3383.71	-342.04	-235.62	358.69	40.4235502
-104.8322148	0.00						
3520.00	10.00	123.30	3482.19	-355.88	-245.16	373.20	40.4235240
-104.8321626	0.00						
3620.00	10.00	123.30	3580.67	-369.73	-254.70	387.72	40.4234978
-104.8321105	0.00						
3720.00	10.00	123.30	3679.15	-383.57	-264.24	402.24	40.4234716
-104.8320584	0.00						
3820.00	10.00	123.30	3777.63	-397.42	-273.77	416.76	40.4234455
-104.8320062	0.00						
3920.00	10.00	123.30	3876.11	-411.26	-283.31	431.28	40.4234193
-104.8319541	0.00						

GREELEY-ROTH_34N-2B-L_PWP__REV-B.1_.las

4020.00	10.00	123.30	3974.59	-425.10	-292.85	445.80	40.4233931
-104.8319019	0.00						
4120.00	10.00	123.30	4073.07	-438.95	-302.39	460.32	40.4233669
-104.8318498	0.00						
4220.00	10.00	123.30	4171.55	-452.79	-311.92	474.83	40.4233407
-104.8317976	0.00						
4320.00	10.00	123.30	4270.03	-466.64	-321.46	489.35	40.4233146
-104.8317455	0.00						
4420.00	10.00	123.30	4368.51	-480.48	-331.00	503.87	40.4232884
-104.8316933	0.00						
4520.00	10.00	123.30	4466.99	-494.33	-340.53	518.39	40.4232622
-104.8316412	0.00						
4620.00	10.00	123.30	4565.47	-508.17	-350.07	532.91	40.4232360
-104.8315891	0.00						
4720.00	10.00	123.30	4663.95	-522.02	-359.61	547.43	40.4232098
-104.8315369	0.00						
4820.00	10.00	123.30	4762.43	-535.86	-369.15	561.94	40.4231837
-104.8314848	0.00						
4920.00	10.00	123.30	4860.91	-549.71	-378.68	576.46	40.4231575
-104.8314326	0.00						
5020.00	10.00	123.30	4959.39	-563.55	-388.22	590.98	40.4231313
-104.8313805	0.00						
5120.00	10.00	123.30	5057.87	-577.39	-397.76	605.50	40.4231051
-104.8313283	0.00						
5220.00	10.00	123.30	5156.35	-591.24	-407.30	620.02	40.4230789
-104.8312762	0.00						
5320.00	10.00	123.30	5254.83	-605.08	-416.83	634.54	40.4230528
-104.8312240	0.00						
5420.00	10.00	123.30	5353.31	-618.93	-426.37	649.06	40.4230266
-104.8311719	0.00						
5520.00	10.00	123.30	5451.79	-632.77	-435.91	663.57	40.4230004
-104.8311198	0.00						
5620.00	10.00	123.30	5550.27	-646.62	-445.45	678.09	40.4229742
-104.8310676	0.00						
5720.00	10.00	123.30	5648.75	-660.46	-454.98	692.61	40.4229480
-104.8310155	0.00						
5820.00	10.00	123.30	5747.23	-674.31	-464.52	707.13	40.4229219
-104.8309633	0.00						
5920.00	10.00	123.30	5845.71	-688.15	-474.06	721.65	40.4228957
-104.8309112	0.00						
6020.00	10.00	123.30	5944.19	-702.00	-483.59	736.17	40.4228695
-104.8308590	0.00						
6120.00	10.00	123.30	6042.67	-715.84	-493.13	750.68	40.4228433
-104.8308069	0.00						
6220.00	10.00	123.30	6141.15	-729.69	-502.67	765.20	40.4228171
-104.8307548	0.00						
6320.00	10.00	123.30	6239.63	-743.53	-512.21	779.72	40.4227910
-104.8307026	0.00						

GREELEY-ROTH_34N-2B-L_PWP__REV-B.1_.las

6333.38	10.00	123.30	6252.80	-745.38	-513.48	781.66	40.4227875
-104.8306956	0.00						
6420.00	5.61	174.34	6338.69	-751.52	-521.84	788.38	40.4227645
-104.8306715	9.00						
6520.00	10.15	236.52	6437.87	-744.00	-531.58	781.50	40.4227378
-104.8306962	9.00						
6620.00	18.33	252.47	6534.75	-721.03	-541.19	759.12	40.4227114
-104.8307766	9.00						
6720.00	27.02	258.59	6626.95	-683.15	-550.44	721.78	40.4226860
-104.8309107	9.00						
6820.00	35.86	261.87	6712.19	-631.31	-559.10	670.41	40.4226623
-104.8310952	9.00						
6920.00	44.76	263.98	6788.37	-566.79	-566.95	606.27	40.4226407
-104.8313256	9.00						
7020.00	53.68	265.52	6853.62	-491.17	-573.80	530.93	40.4226219
-104.8315962	9.00						
7120.00	62.63	266.74	6906.33	-406.31	-579.49	446.27	40.4226063
-104.8319003	9.00						
7220.00	71.57	267.77	6945.20	-314.30	-583.87	354.35	40.4225943
-104.8322304	9.00						
7320.00	80.53	268.71	6969.29	-217.42	-586.83	257.44	40.4225861
-104.8325784	9.00						
7420.00	89.49	269.59	6977.98	-118.03	-588.31	157.94	40.4225821
-104.8329358	9.00						
7428.43	90.24	269.66	6978.00	-109.62	-588.37	149.50	40.4225819
-104.8329661	9.00						
7478.43	90.24	269.66	6977.79	-59.71	-588.66	99.50	40.4225811
-104.8331457	0.00						
7520.00	90.24	268.83	6977.61	-18.21	-589.21	57.94	40.4225796
-104.8332950	2.00						
7536.58	90.24	268.50	6977.55	-1.64	-589.59	41.36	40.4225786
-104.8333545	2.00						
7620.00	90.24	268.50	6977.19	81.71	-591.78	-42.02	40.4225726
-104.8336540	0.00						
7720.00	90.24	268.50	6976.77	181.62	-594.39	-141.99	40.4225654
-104.8340130	0.00						
7820.00	90.24	268.50	6976.35	281.54	-597.01	-241.95	40.4225582
-104.8343721	0.00						
7920.00	90.24	268.50	6975.93	381.45	-599.63	-341.92	40.4225510
-104.8347311	0.00						
8020.00	90.24	268.50	6975.51	481.36	-602.25	-441.88	40.4225438
-104.8350901	0.00						
8120.00	90.24	268.50	6975.09	581.28	-604.86	-541.85	40.4225366
-104.8354491	0.00						
8220.00	90.24	268.50	6974.67	681.19	-607.48	-641.81	40.4225295
-104.8358082	0.00						
8320.00	90.24	268.50	6974.25	781.11	-610.10	-741.78	40.4225223
-104.8361672	0.00						

GREELEY-ROTH_34N-2B-L_PWP__REV-B.1_.las

8420.00	90.24	268.50	6973.83	881.02	-612.72	-841.74	40.4225151
-104.8365262	0.00						
8520.00	90.24	268.50	6973.41	980.94	-615.33	-941.71	40.4225079
-104.8368853	0.00						
8620.00	90.24	268.50	6972.99	1080.85	-617.95	-1041.67	40.4225007
-104.8372443	0.00						
8720.00	90.24	268.50	6972.57	1180.77	-620.57	-1141.64	40.4224935
-104.8376033	0.00						
8820.00	90.24	268.50	6972.15	1280.68	-623.19	-1241.60	40.4224863
-104.8379624	0.00						
8920.00	90.24	268.50	6971.73	1380.60	-625.81	-1341.57	40.4224791
-104.8383214	0.00						
9020.00	90.24	268.50	6971.31	1480.51	-628.42	-1441.53	40.4224719
-104.8386804	0.00						
9120.00	90.24	268.50	6970.88	1580.43	-631.04	-1541.50	40.4224647
-104.8390395	0.00						
9220.00	90.24	268.50	6970.46	1680.34	-633.66	-1641.46	40.4224575
-104.8393985	0.00						
9320.00	90.24	268.50	6970.04	1780.26	-636.28	-1741.43	40.4224503
-104.8397575	0.00						
9420.00	90.24	268.50	6969.62	1880.17	-638.89	-1841.39	40.4224431
-104.8401166	0.00						
9520.00	90.24	268.50	6969.20	1980.09	-641.51	-1941.36	40.4224359
-104.8404756	0.00						
9620.00	90.24	268.50	6968.78	2080.00	-644.13	-2041.32	40.4224287
-104.8408346	0.00						
9720.00	90.24	268.50	6968.36	2179.92	-646.75	-2141.29	40.4224214
-104.8411936	0.00						
9820.00	90.24	268.50	6967.94	2279.83	-649.36	-2241.25	40.4224142
-104.8415527	0.00						
9920.00	90.24	268.50	6967.52	2379.74	-651.98	-2341.22	40.4224070
-104.8419117	0.00						
10020.00	90.24	268.50	6967.10	2479.66	-654.60	-2441.18	40.4223998
-104.8422707	0.00						
10120.00	90.24	268.50	6966.68	2579.57	-657.22	-2541.15	40.4223926
-104.8426298	0.00						
10220.00	90.24	268.50	6966.26	2679.49	-659.84	-2641.11	40.4223854
-104.8429888	0.00						
10320.00	90.24	268.50	6965.84	2779.40	-662.45	-2741.08	40.4223782
-104.8433478	0.00						
10420.00	90.24	268.50	6965.42	2879.32	-665.07	-2841.04	40.4223710
-104.8437069	0.00						
10520.00	90.24	268.50	6965.00	2979.23	-667.69	-2941.01	40.4223637
-104.8440659	0.00						
10620.00	90.24	268.50	6964.58	3079.15	-670.31	-3040.97	40.4223565
-104.8444249	0.00						
10720.00	90.24	268.50	6964.15	3179.06	-672.92	-3140.93	40.4223493
-104.8447839	0.00						

GREELEY-ROTH_34N-2B-L_PWP__REV-B.1_.las

10820.00	90.24	268.50	6963.73	3278.98	-675.54	-3240.90	40.4223421
-104.8451430	0.00						
10920.00	90.24	268.50	6963.31	3378.89	-678.16	-3340.86	40.4223349
-104.8455020	0.00						
11020.00	90.24	268.50	6962.89	3478.81	-680.78	-3440.83	40.4223276
-104.8458610	0.00						
11120.00	90.24	268.50	6962.47	3578.72	-683.39	-3540.79	40.4223204
-104.8462201	0.00						
11220.00	90.24	268.50	6962.05	3678.64	-686.01	-3640.76	40.4223132
-104.8465791	0.00						
11320.00	90.24	268.50	6961.63	3778.55	-688.63	-3740.72	40.4223060
-104.8469381	0.00						
11420.00	90.24	268.50	6961.21	3878.47	-691.25	-3840.69	40.4222987
-104.8472971	0.00						
11520.00	90.24	268.50	6960.79	3978.38	-693.86	-3940.65	40.4222915
-104.8476562	0.00						
11620.00	90.24	268.50	6960.37	4078.29	-696.48	-4040.62	40.4222843
-104.8480152	0.00						
11636.58	90.24	268.50	6960.30	4094.87	-696.92	-4057.20	40.4222831
-104.8480747	0.00						
11720.00	90.24	270.17	6959.95	4178.15	-697.89	-4140.60	40.4222804
-104.8483743	2.00						
11739.19	90.24	270.55	6959.87	4197.29	-697.77	-4159.80	40.4222807
-104.8484432	2.00						
11820.00	90.24	270.55	6959.53	4277.86	-696.99	-4240.60	40.4222828
-104.8487334	0.00						
11920.00	90.24	270.55	6959.10	4377.56	-696.02	-4340.59	40.4222854
-104.8490926	0.00						
12020.00	90.24	270.55	6958.68	4477.26	-695.06	-4440.59	40.4222880
-104.8494517	0.00						
12120.00	90.24	270.55	6958.26	4576.97	-694.10	-4540.58	40.4222906
-104.8498109	0.00						
12220.00	90.24	270.55	6957.84	4676.67	-693.13	-4640.58	40.4222932
-104.8501700	0.00						
12320.00	90.24	270.55	6957.42	4776.37	-692.17	-4740.57	40.4222958
-104.8505291	0.00						
12420.00	90.24	270.55	6957.00	4876.08	-691.20	-4840.57	40.4222984
-104.8508883	0.00						
12520.00	90.24	270.55	6956.57	4975.78	-690.24	-4940.56	40.4223010
-104.8512474	0.00						
12620.00	90.24	270.55	6956.15	5075.48	-689.28	-5040.55	40.4223035
-104.8516065	0.00						
12720.00	90.24	270.55	6955.73	5175.19	-688.31	-5140.55	40.4223061
-104.8519657	0.00						
12820.00	90.24	270.55	6955.31	5274.89	-687.35	-5240.54	40.4223087
-104.8523248	0.00						
12920.00	90.24	270.55	6954.89	5374.60	-686.38	-5340.54	40.4223113
-104.8526840	0.00						

GREELEY-ROTH_34N-2B-L_PWP__REV-B.1_.las

13020.00	90.24	270.55	6954.47	5474.30	-685.42	-5440.53	40.4223139
-104.8530431	0.00						
13120.00	90.24	270.55	6954.04	5574.00	-684.46	-5540.53	40.4223165
-104.8534022	0.00						
13220.00	90.24	270.55	6953.62	5673.71	-683.49	-5640.52	40.4223191
-104.8537614	0.00						
13320.00	90.24	270.55	6953.20	5773.41	-682.53	-5740.52	40.4223216
-104.8541205	0.00						
13420.00	90.24	270.55	6952.78	5873.11	-681.57	-5840.51	40.4223242
-104.8544796	0.00						
13520.00	90.24	270.55	6952.36	5972.82	-680.60	-5940.50	40.4223268
-104.8548388	0.00						
13620.00	90.24	270.55	6951.94	6072.52	-679.64	-6040.50	40.4223294
-104.8551979	0.00						
13720.00	90.24	270.55	6951.51	6172.22	-678.67	-6140.49	40.4223320
-104.8555571	0.00						
13820.00	90.24	270.55	6951.09	6271.93	-677.71	-6240.49	40.4223345
-104.8559162	0.00						
13920.00	90.24	270.55	6950.67	6371.63	-676.75	-6340.48	40.4223371
-104.8562753	0.00						
14020.00	90.24	270.55	6950.25	6471.33	-675.78	-6440.48	40.4223397
-104.8566345	0.00						
14120.00	90.24	270.55	6949.83	6571.04	-674.82	-6540.47	40.4223423
-104.8569936	0.00						
14220.00	90.24	270.55	6949.41	6670.74	-673.86	-6640.47	40.4223448
-104.8573527	0.00						
14320.00	90.24	270.55	6948.98	6770.45	-672.89	-6740.46	40.4223474
-104.8577119	0.00						
14420.00	90.24	270.55	6948.56	6870.15	-671.93	-6840.45	40.4223500
-104.8580710	0.00						
14520.00	90.24	270.55	6948.14	6969.85	-670.96	-6940.45	40.4223525
-104.8584302	0.00						
14620.00	90.24	270.55	6947.72	7069.56	-670.00	-7040.44	40.4223551
-104.8587893	0.00						
14720.00	90.24	270.55	6947.30	7169.26	-669.04	-7140.44	40.4223577
-104.8591484	0.00						
14820.00	90.24	270.55	6946.87	7268.96	-668.07	-7240.43	40.4223602
-104.8595076	0.00						
14920.00	90.24	270.55	6946.45	7368.67	-667.11	-7340.43	40.4223628
-104.8598667	0.00						
15020.00	90.24	270.55	6946.03	7468.37	-666.15	-7440.42	40.4223654
-104.8602258	0.00						
15120.00	90.24	270.55	6945.61	7568.07	-665.18	-7540.42	40.4223679
-104.8605850	0.00						
15220.00	90.24	270.55	6945.19	7667.78	-664.22	-7640.41	40.4223705
-104.8609441	0.00						
15320.00	90.24	270.55	6944.77	7767.48	-663.25	-7740.40	40.4223731
-104.8613033	0.00						

GREELEY-ROTH_34N-2B-L_PWP__REV-B.1_.las

15420.00	90.24	270.55	6944.34	7867.18	-662.29	-7840.40	40.4223756
-104.8616624	0.00						
15520.00	90.24	270.55	6943.92	7966.89	-661.33	-7940.39	40.4223782
-104.8620215	0.00						
15620.00	90.24	270.55	6943.50	8066.59	-660.36	-8040.39	40.4223807
-104.8623807	0.00						
15720.00	90.24	270.55	6943.08	8166.29	-659.40	-8140.38	40.4223833
-104.8627398	0.00						
15820.00	90.24	270.55	6942.66	8266.00	-658.44	-8240.38	40.4223858
-104.8630990	0.00						
15920.00	90.24	270.55	6942.24	8365.70	-657.47	-8340.37	40.4223884
-104.8634581	0.00						
16020.00	90.24	270.55	6941.81	8465.41	-656.51	-8440.37	40.4223909
-104.8638172	0.00						
16120.00	90.24	270.55	6941.39	8565.11	-655.54	-8540.36	40.4223935
-104.8641764	0.00						
16220.00	90.24	270.55	6940.97	8664.81	-654.58	-8640.35	40.4223960
-104.8645355	0.00						
16320.00	90.24	270.55	6940.55	8764.52	-653.62	-8740.35	40.4223986
-104.8648946	0.00						
16420.00	90.24	270.55	6940.13	8864.22	-652.65	-8840.34	40.4224011
-104.8652538	0.00						
16520.00	90.24	270.55	6939.71	8963.92	-651.69	-8940.34	40.4224037
-104.8656129	0.00						
16620.00	90.24	270.55	6939.28	9063.63	-650.72	-9040.33	40.4224062
-104.8659721	0.00						
16720.00	90.24	270.55	6938.86	9163.33	-649.76	-9140.33	40.4224088
-104.8663312	0.00						
16820.00	90.24	270.55	6938.44	9263.03	-648.80	-9240.32	40.4224113
-104.8666903	0.00						
16920.00	90.24	270.55	6938.02	9362.74	-647.83	-9340.32	40.4224139
-104.8670495	0.00						
17020.00	90.24	270.55	6937.60	9462.44	-646.87	-9440.31	40.4224164
-104.8674086	0.00						
17120.00	90.24	270.55	6937.18	9562.14	-645.91	-9540.31	40.4224189
-104.8677678	0.00						
17161.54	90.24	270.55	6937.00	9603.56	-645.51	-9581.84	40.4224200
-104.8679169	0.00						



SRC ENERGY

Planned Wellpath Report

GREELEY-ROTH 34N-2B-L PWP (REV-B.1)

Page 1 of 9

**BAKER
HUGHES**

REFERENCE WELLPATH IDENTIFICATION

Operator	SRC ENERGY	Slot	SLOT#23 GREELEY-ROTH 34N-2B-L (963'FSL & 294'FEL, SEC.01)
Area	COLORADO	Well	GREELEY-ROTH 34N-2B-L
Field	WELD COUNTY (NAD83,TRUE NORTH)	Wellbore	GREELEY-ROTH 34N-2B-L PWB
Facility	SEC.01-T05N-R67W		

REPORT SETUP INFORMATION

Projection System	NAD83 / Lambert Colorado SP, Northern Zone (501), US feet	Software System	WellArchitect® 5.0
North Reference	True	User	Doddanna
Scale	0.999961	Report Generated	11/28/2017 at 9:41:43 AM
Convergence at slot	0.43° East	Database/Source file	WellArchitectDB/GREELEY-ROTH_34N-2B-L_PWP__REV-B.1_.xml

WELLPATH LOCATION

	Local coordinates		Grid coordinates		Geographic coordinates	
	North[ft]	East[ft]	Easting[US ft]	Northing[US ft]	Latitude	Longitude
Slot Location	-1404.83	2.24	3185558.30	1398072.63	40°25'27.109"N	104°50'00.611"W
Facility Reference Pt			3185545.50	1399477.36	40°25'40.991"N	104°50'00.640"W
Field Reference Pt			3171284.48	1426358.81	40°30'07.643"N	104°53'02.634"W

WELLPATH DATUM

Calculation method	Minimum curvature	PRECISION 462 (20') (RKB) to Facility Vertical Datum	4893.00ft
Horizontal Reference Pt	Slot	PRECISION 462 (20') (RKB) to Mean Sea Level	4893.00ft
Vertical Reference Pt	PRECISION 462 (20') (RKB)	PRECISION 462 (20') (RKB) to Mud Line at Slot (SLOT#23 GREELEY-ROTH 34N-2B-L (963'FSL & 294'FEL, SEC.01))	4893.00ft
MD Reference Pt	PRECISION 462 (20') (RKB)	Section Origin	N 0.00, E 0.00 ft
Field Vertical Reference	Mean Sea Level	Section Azimuth	266.15°



SRC ENERGY

Planned Wellpath Report

GREELEY-ROTH 34N-2B-L PWP (REV-B.1)

Page 2 of 9

**REFERENCE WELLPATH IDENTIFICATION**

Operator	SRC ENERGY	Slot	SLOT#23 GREELEY-ROTH 34N-2B-L (963'FSL & 294'FEL, SEC.01)
Area	COLORADO	Well	GREELEY-ROTH 34N-2B-L
Field	WELD COUNTY (NAD83,TRUE NORTH)	Wellbore	GREELEY-ROTH 34N-2B-L PWB
Facility	SEC.01-T05N-R67W		

WELLPATH DATA (182 stations) † = interpolated/extrapolated station

MD [ft]	Inclination [°]	Azimuth [°]	TVD [ft]	Vert Sect [ft]	North [ft]	East [ft]	DLS [°/100ft]	Comments
0.00†	0.000	123.301	0.00	0.00	0.00	0.00	0.00	
20.00	0.000	123.301	20.00	0.00	0.00	0.00	0.00	Tie On
120.00†	0.000	123.301	120.00	0.00	0.00	0.00	0.00	
220.00†	0.000	123.301	220.00	0.00	0.00	0.00	0.00	
320.00†	0.000	123.301	320.00	0.00	0.00	0.00	0.00	
420.00†	0.000	123.301	420.00	0.00	0.00	0.00	0.00	
520.00†	0.000	123.301	520.00	0.00	0.00	0.00	0.00	
620.00†	0.000	123.301	620.00	0.00	0.00	0.00	0.00	
700.00	0.000	123.301	700.00	0.00	0.00	0.00	0.00	End of Tangent
720.00†	0.400	123.301	720.00	-0.06	-0.04	0.06	2.00	
820.00†	2.400	123.301	819.96	-2.00	-1.38	2.10	2.00	
920.00†	4.400	123.301	919.78	-6.73	-4.64	7.06	2.00	
1020.00†	6.400	123.301	1019.33	-14.23	-9.80	14.92	2.00	
1120.00†	8.400	123.301	1118.50	-24.49	-16.87	25.69	2.00	
1200.18	10.004	123.301	1197.64	-34.71	-23.91	36.40	2.00	End of Build
1220.00†	10.004	123.301	1217.16	-37.46	-25.80	39.28	0.00	
1320.00†	10.004	123.301	1315.64	-51.30	-35.34	53.80	0.00	
1420.00†	10.004	123.301	1414.12	-65.15	-44.88	68.32	0.00	
1520.00†	10.004	123.301	1512.60	-78.99	-54.42	82.84	0.00	
1620.00†	10.004	123.301	1611.08	-92.83	-63.95	97.35	0.00	
1720.00†	10.004	123.301	1709.56	-106.68	-73.49	111.87	0.00	
1820.00†	10.004	123.301	1808.04	-120.52	-83.03	126.39	0.00	
1920.00†	10.004	123.301	1906.52	-134.37	-92.56	140.91	0.00	
2020.00†	10.004	123.301	2005.00	-148.21	-102.10	155.43	0.00	
2120.00†	10.004	123.301	2103.48	-162.06	-111.64	169.95	0.00	
2220.00†	10.004	123.301	2201.96	-175.90	-121.18	184.46	0.00	
2320.00†	10.004	123.301	2300.44	-189.75	-130.71	198.98	0.00	
2420.00†	10.004	123.301	2398.92	-203.59	-140.25	213.50	0.00	
2520.00†	10.004	123.301	2497.40	-217.44	-149.79	228.02	0.00	
2620.00†	10.004	123.301	2595.88	-231.28	-159.33	242.54	0.00	



SRC ENERGY

Planned Wellpath Report

GREELEY-ROTH 34N-2B-L PWP (REV-B.1)

Page 3 of 9

**BAKER
HUGHES****REFERENCE WELLPATH IDENTIFICATION**

Operator	SRC ENERGY	Slot	SLOT#23 GREELEY-ROTH 34N-2B-L (963'FSL & 294'FEL, SEC.01)
Area	COLORADO	Well	GREELEY-ROTH 34N-2B-L
Field	WELD COUNTY (NAD83,TRUE NORTH)	Wellbore	GREELEY-ROTH 34N-2B-L PWB
Facility	SEC.01-T05N-R67W		

WELLPATH DATA (182 stations) † = interpolated/extrapolated station

MD [ft]	Inclination [°]	Azimuth [°]	TVD [ft]	Vert Sect [ft]	North [ft]	East [ft]	DLS [°/100ft]	Comments
2720.00†	10.004	123.301	2694.36	-245.13	-168.86	257.06	0.00	
2820.00†	10.004	123.301	2792.84	-258.97	-178.40	271.58	0.00	
2920.00†	10.004	123.301	2891.32	-272.81	-187.94	286.09	0.00	
3020.00†	10.004	123.301	2989.80	-286.66	-197.48	300.61	0.00	
3120.00†	10.004	123.301	3088.28	-300.50	-207.01	315.13	0.00	
3220.00†	10.004	123.301	3186.76	-314.35	-216.55	329.65	0.00	
3320.00†	10.004	123.301	3285.24	-328.19	-226.09	344.17	0.00	
3420.00†	10.004	123.301	3383.71	-342.04	-235.62	358.69	0.00	
3520.00†	10.004	123.301	3482.19	-355.88	-245.16	373.20	0.00	
3620.00†	10.004	123.301	3580.67	-369.73	-254.70	387.72	0.00	
3720.00†	10.004	123.301	3679.15	-383.57	-264.24	402.24	0.00	
3820.00†	10.004	123.301	3777.63	-397.42	-273.77	416.76	0.00	
3920.00†	10.004	123.301	3876.11	-411.26	-283.31	431.28	0.00	
4020.00†	10.004	123.301	3974.59	-425.10	-292.85	445.80	0.00	
4120.00†	10.004	123.301	4073.07	-438.95	-302.39	460.32	0.00	
4220.00†	10.004	123.301	4171.55	-452.79	-311.92	474.83	0.00	
4320.00†	10.004	123.301	4270.03	-466.64	-321.46	489.35	0.00	
4420.00†	10.004	123.301	4368.51	-480.48	-331.00	503.87	0.00	
4520.00†	10.004	123.301	4466.99	-494.33	-340.53	518.39	0.00	
4620.00†	10.004	123.301	4565.47	-508.17	-350.07	532.91	0.00	
4720.00†	10.004	123.301	4663.95	-522.02	-359.61	547.43	0.00	
4820.00†	10.004	123.301	4762.43	-535.86	-369.15	561.94	0.00	
4920.00†	10.004	123.301	4860.91	-549.71	-378.68	576.46	0.00	
5020.00†	10.004	123.301	4959.39	-563.55	-388.22	590.98	0.00	
5120.00†	10.004	123.301	5057.87	-577.39	-397.76	605.50	0.00	
5220.00†	10.004	123.301	5156.35	-591.24	-407.30	620.02	0.00	
5320.00†	10.004	123.301	5254.83	-605.08	-416.83	634.54	0.00	
5420.00†	10.004	123.301	5353.31	-618.93	-426.37	649.06	0.00	
5520.00†	10.004	123.301	5451.79	-632.77	-435.91	663.57	0.00	
5620.00†	10.004	123.301	5550.27	-646.62	-445.45	678.09	0.00	



SRC ENERGY

Planned Wellpath Report

GREELEY-ROTH 34N-2B-L PWP (REV-B.1)

Page 4 of 9

**REFERENCE WELLPATH IDENTIFICATION**

Operator	SRC ENERGY	Slot	SLOT#23 GREELEY-ROTH 34N-2B-L (963'FSL & 294'FEL, SEC.01)
Area	COLORADO	Well	GREELEY-ROTH 34N-2B-L
Field	WELD COUNTY (NAD83,TRUE NORTH)	Wellbore	GREELEY-ROTH 34N-2B-L PWB
Facility	SEC.01-T05N-R67W		

WELLPATH DATA (182 stations) † = interpolated/extrapolated station

MD [ft]	Inclination [°]	Azimuth [°]	TVD [ft]	Vert Sect [ft]	North [ft]	East [ft]	DLS [°/100ft]	Comments
5720.00†	10.004	123.301	5648.75	-660.46	-454.98	692.61	0.00	
5820.00†	10.004	123.301	5747.23	-674.31	-464.52	707.13	0.00	
5920.00†	10.004	123.301	5845.71	-688.15	-474.06	721.65	0.00	
6020.00†	10.004	123.301	5944.19	-702.00	-483.59	736.17	0.00	
6120.00†	10.004	123.301	6042.67	-715.84	-493.13	750.68	0.00	
6220.00†	10.004	123.301	6141.15	-729.69	-502.67	765.20	0.00	
6320.00†	10.004	123.301	6239.63	-743.53	-512.21	779.72	0.00	
6333.38	10.004	123.301	6252.80	-745.38	-513.48	781.66	0.00	End of Tangent
6420.00†	5.608	174.342	6338.69	-751.52	-521.84	788.38	9.00	
6520.00†	10.145	236.518	6437.87	-744.00	-531.58	781.50	9.00	
6620.00†	18.327	252.471	6534.75	-721.03	-541.19	759.12	9.00	
6720.00†	27.024	258.588	6626.95	-683.15	-550.44	721.78	9.00	
6820.00†	35.863	261.866	6712.19	-631.31	-559.10	670.41	9.00	
6920.00†	44.759	263.981	6788.37	-566.79	-566.95	606.27	9.00	
7020.00†	53.684	265.518	6853.62	-491.17	-573.80	530.93	9.00	
7120.00†	62.625	266.737	6906.33	-406.31	-579.49	446.27	9.00	
7220.00†	71.574	267.773	6945.20	-314.30	-583.87	354.35	9.00	
7320.00†	80.529	268.705	6969.29	-217.42	-586.83	257.44	9.00	
7420.00†	89.485	269.589	6977.98	-118.03	-588.31	157.94	9.00	
7428.43	90.241	269.663	6978.00 [†]	-109.62	-588.37	149.50	9.00	End of 3D Arc
7478.43	90.241	269.663	6977.79	-59.71	-588.66	99.50	0.00	End of Tangent
7520.00†	90.241	268.832	6977.61	-18.21	-589.21	57.94	2.00	
7536.58	90.241	268.500	6977.55	-1.64	-589.59	41.36	2.00	End of 3D Arc
7620.00†	90.241	268.500	6977.19	81.71	-591.78	-42.02	0.00	
7720.00†	90.241	268.500	6976.77	181.62	-594.39	-141.99	0.00	
7820.00†	90.241	268.500	6976.35	281.54	-597.01	-241.95	0.00	
7920.00†	90.241	268.500	6975.93	381.45	-599.63	-341.92	0.00	
8020.00†	90.241	268.500	6975.51	481.36	-602.25	-441.88	0.00	
8120.00†	90.241	268.500	6975.09	581.28	-604.86	-541.85	0.00	
8220.00†	90.241	268.500	6974.67	681.19	-607.48	-641.81	0.00	



SRC ENERGY

Planned Wellpath Report

GREELEY-ROTH 34N-2B-L PWP (REV-B.1)

Page 5 of 9

**BAKER
HUGHES****REFERENCE WELLPATH IDENTIFICATION**

Operator	SRC ENERGY	Slot	SLOT#23 GREELEY-ROTH 34N-2B-L (963'FSL & 294'FEL, SEC.01)
Area	COLORADO	Well	GREELEY-ROTH 34N-2B-L
Field	WELD COUNTY (NAD83,TRUE NORTH)	Wellbore	GREELEY-ROTH 34N-2B-L PWB
Facility	SEC.01-T05N-R67W		

WELLPATH DATA (182 stations) † = interpolated/extrapolated station

MD [ft]	Inclination [°]	Azimuth [°]	TVD [ft]	Vert Sect [ft]	North [ft]	East [ft]	DLS [°/100ft]	Comments
8320.00†	90.241	268.500	6974.25	781.11	-610.10	-741.78	0.00	
8420.00†	90.241	268.500	6973.83	881.02	-612.72	-841.74	0.00	
8520.00†	90.241	268.500	6973.41	980.94	-615.33	-941.71	0.00	
8620.00†	90.241	268.500	6972.99	1080.85	-617.95	-1041.67	0.00	
8720.00†	90.241	268.500	6972.57	1180.77	-620.57	-1141.64	0.00	
8820.00†	90.241	268.500	6972.15	1280.68	-623.19	-1241.60	0.00	
8920.00†	90.241	268.500	6971.73	1380.60	-625.81	-1341.57	0.00	
9020.00†	90.241	268.500	6971.31	1480.51	-628.42	-1441.53	0.00	
9120.00†	90.241	268.500	6970.88	1580.43	-631.04	-1541.50	0.00	
9220.00†	90.241	268.500	6970.46	1680.34	-633.66	-1641.46	0.00	
9320.00†	90.241	268.500	6970.04	1780.26	-636.28	-1741.43	0.00	
9420.00†	90.241	268.500	6969.62	1880.17	-638.89	-1841.39	0.00	
9520.00†	90.241	268.500	6969.20	1980.09	-641.51	-1941.36	0.00	
9620.00†	90.241	268.500	6968.78	2080.00	-644.13	-2041.32	0.00	
9720.00†	90.241	268.500	6968.36	2179.92	-646.75	-2141.29	0.00	
9820.00†	90.241	268.500	6967.94	2279.83	-649.36	-2241.25	0.00	
9920.00†	90.241	268.500	6967.52	2379.74	-651.98	-2341.22	0.00	
10020.00†	90.241	268.500	6967.10	2479.66	-654.60	-2441.18	0.00	
10120.00†	90.241	268.500	6966.68	2579.57	-657.22	-2541.15	0.00	
10220.00†	90.241	268.500	6966.26	2679.49	-659.84	-2641.11	0.00	
10320.00†	90.241	268.500	6965.84	2779.40	-662.45	-2741.08	0.00	
10420.00†	90.241	268.500	6965.42	2879.32	-665.07	-2841.04	0.00	
10520.00†	90.241	268.500	6965.00	2979.23	-667.69	-2941.01	0.00	
10620.00†	90.241	268.500	6964.58	3079.15	-670.31	-3040.97	0.00	
10720.00†	90.241	268.500	6964.15	3179.06	-672.92	-3140.93	0.00	
10820.00†	90.241	268.500	6963.73	3278.98	-675.54	-3240.90	0.00	
10920.00†	90.241	268.500	6963.31	3378.89	-678.16	-3340.86	0.00	
11020.00†	90.241	268.500	6962.89	3478.81	-680.78	-3440.83	0.00	
11120.00†	90.241	268.500	6962.47	3578.72	-683.39	-3540.79	0.00	
11220.00†	90.241	268.500	6962.05	3678.64	-686.01	-3640.76	0.00	



SRC ENERGY

Planned Wellpath Report

GREELEY-ROTH 34N-2B-L PWP (REV-B.1)

Page 6 of 9

**BAKER
HUGHES****REFERENCE WELLPATH IDENTIFICATION**

Operator	SRC ENERGY	Slot	SLOT#23 GREELEY-ROTH 34N-2B-L (963'FSL & 294'FEL, SEC.01)
Area	COLORADO	Well	GREELEY-ROTH 34N-2B-L
Field	WELD COUNTY (NAD83,TRUE NORTH)	Wellbore	GREELEY-ROTH 34N-2B-L PWB
Facility	SEC.01-T05N-R67W		

WELLPATH DATA (182 stations) † = interpolated/extrapolated station

MD [ft]	Inclination [°]	Azimuth [°]	TVD [ft]	Vert Sect [ft]	North [ft]	East [ft]	DLS [°/100ft]	Comments
11320.00†	90.241	268.500	6961.63	3778.55	-688.63	-3740.72	0.00	
11420.00†	90.241	268.500	6961.21	3878.47	-691.25	-3840.69	0.00	
11520.00†	90.241	268.500	6960.79	3978.38	-693.86	-3940.65	0.00	
11620.00†	90.241	268.500	6960.37	4078.29	-696.48	-4040.62	0.00	
11636.58	90.241	268.500	6960.30	4094.87	-696.92	-4057.20	0.00	End of Tangent
11720.00†	90.242	270.168	6959.95	4178.15	-697.89	-4140.60	2.00	
11739.19	90.242	270.552	6959.87	4197.29	-697.77	-4159.80	2.00	End of 3D Arc
11820.00†	90.242	270.552	6959.53	4277.86	-696.99	-4240.60	0.00	
11920.00†	90.242	270.552	6959.10	4377.56	-696.02	-4340.59	0.00	
12020.00†	90.242	270.552	6958.68	4477.26	-695.06	-4440.59	0.00	
12120.00†	90.242	270.552	6958.26	4576.97	-694.10	-4540.58	0.00	
12220.00†	90.242	270.552	6957.84	4676.67	-693.13	-4640.58	0.00	
12320.00†	90.242	270.552	6957.42	4776.37	-692.17	-4740.57	0.00	
12420.00†	90.242	270.552	6957.00	4876.08	-691.20	-4840.57	0.00	
12520.00†	90.242	270.552	6956.57	4975.78	-690.24	-4940.56	0.00	
12620.00†	90.242	270.552	6956.15	5075.48	-689.28	-5040.55	0.00	
12720.00†	90.242	270.552	6955.73	5175.19	-688.31	-5140.55	0.00	
12820.00†	90.242	270.552	6955.31	5274.89	-687.35	-5240.54	0.00	
12920.00†	90.242	270.552	6954.89	5374.60	-686.38	-5340.54	0.00	
13020.00†	90.242	270.552	6954.47	5474.30	-685.42	-5440.53	0.00	
13120.00†	90.242	270.552	6954.04	5574.00	-684.46	-5540.53	0.00	
13220.00†	90.242	270.552	6953.62	5673.71	-683.49	-5640.52	0.00	
13320.00†	90.242	270.552	6953.20	5773.41	-682.53	-5740.52	0.00	
13420.00†	90.242	270.552	6952.78	5873.11	-681.57	-5840.51	0.00	
13520.00†	90.242	270.552	6952.36	5972.82	-680.60	-5940.50	0.00	
13620.00†	90.242	270.552	6951.94	6072.52	-679.64	-6040.50	0.00	
13720.00†	90.242	270.552	6951.51	6172.22	-678.67	-6140.49	0.00	
13820.00†	90.242	270.552	6951.09	6271.93	-677.71	-6240.49	0.00	
13920.00†	90.242	270.552	6950.67	6371.63	-676.75	-6340.48	0.00	
14020.00†	90.242	270.552	6950.25	6471.33	-675.78	-6440.48	0.00	



SRC ENERGY

Planned Wellpath Report

GREELEY-ROTH 34N-2B-L PWP (REV-B.1)

Page 7 of 9

**BAKER
HUGHES****REFERENCE WELLPATH IDENTIFICATION**

Operator	SRC ENERGY	Slot	SLOT#23 GREELEY-ROTH 34N-2B-L (963'FSL & 294'FEL, SEC.01)
Area	COLORADO	Well	GREELEY-ROTH 34N-2B-L
Field	WELD COUNTY (NAD83,TRUE NORTH)	Wellbore	GREELEY-ROTH 34N-2B-L PWB
Facility	SEC.01-T05N-R67W		

WELLPATH DATA (182 stations) † = interpolated/extrapolated station

MD [ft]	Inclination [°]	Azimuth [°]	TVD [ft]	Vert Sect [ft]	North [ft]	East [ft]	DLS [°/100ft]	Comments
14120.00†	90.242	270.552	6949.83	6571.04	-674.82	-6540.47	0.00	
14220.00†	90.242	270.552	6949.41	6670.74	-673.86	-6640.47	0.00	
14320.00†	90.242	270.552	6948.98	6770.45	-672.89	-6740.46	0.00	
14420.00†	90.242	270.552	6948.56	6870.15	-671.93	-6840.45	0.00	
14520.00†	90.242	270.552	6948.14	6969.85	-670.96	-6940.45	0.00	
14620.00†	90.242	270.552	6947.72	7069.56	-670.00	-7040.44	0.00	
14720.00†	90.242	270.552	6947.30	7169.26	-669.04	-7140.44	0.00	
14820.00†	90.242	270.552	6946.87	7268.96	-668.07	-7240.43	0.00	
14920.00†	90.242	270.552	6946.45	7368.67	-667.11	-7340.43	0.00	
15020.00†	90.242	270.552	6946.03	7468.37	-666.15	-7440.42	0.00	
15120.00†	90.242	270.552	6945.61	7568.07	-665.18	-7540.42	0.00	
15220.00†	90.242	270.552	6945.19	7667.78	-664.22	-7640.41	0.00	
15320.00†	90.242	270.552	6944.77	7767.48	-663.25	-7740.40	0.00	
15420.00†	90.242	270.552	6944.34	7867.18	-662.29	-7840.40	0.00	
15520.00†	90.242	270.552	6943.92	7966.89	-661.33	-7940.39	0.00	
15620.00†	90.242	270.552	6943.50	8066.59	-660.36	-8040.39	0.00	
15720.00†	90.242	270.552	6943.08	8166.29	-659.40	-8140.38	0.00	
15820.00†	90.242	270.552	6942.66	8266.00	-658.44	-8240.38	0.00	
15920.00†	90.242	270.552	6942.24	8365.70	-657.47	-8340.37	0.00	
16020.00†	90.242	270.552	6941.81	8465.41	-656.51	-8440.37	0.00	
16120.00†	90.242	270.552	6941.39	8565.11	-655.54	-8540.36	0.00	
16220.00†	90.242	270.552	6940.97	8664.81	-654.58	-8640.35	0.00	
16320.00†	90.242	270.552	6940.55	8764.52	-653.62	-8740.35	0.00	
16420.00†	90.242	270.552	6940.13	8864.22	-652.65	-8840.34	0.00	
16520.00†	90.242	270.552	6939.71	8963.92	-651.69	-8940.34	0.00	
16620.00†	90.242	270.552	6939.28	9063.63	-650.72	-9040.33	0.00	
16720.00†	90.242	270.552	6938.86	9163.33	-649.76	-9140.33	0.00	
16820.00†	90.242	270.552	6938.44	9263.03	-648.80	-9240.32	0.00	
16920.00†	90.242	270.552	6938.02	9362.74	-647.83	-9340.32	0.00	
17020.00†	90.242	270.552	6937.60	9462.44	-646.87	-9440.31	0.00	



SRC ENERGY

Planned Wellpath Report

GREELEY-ROTH 34N-2B-L PWP (REV-B.1)
Page 8 of 9

**REFERENCE WELLPATH IDENTIFICATION**

Operator	SRC ENERGY	Slot	SLOT#23 GREELEY-ROTH 34N-2B-L (963'FSL & 294'FEL, SEC.01)
Area	COLORADO	Well	GREELEY-ROTH 34N-2B-L
Field	WELD COUNTY (NAD83,TRUE NORTH)	Wellbore	GREELEY-ROTH 34N-2B-L PWB
Facility	SEC.01-T05N-R67W		

WELLPATH DATA (182 stations) † = interpolated/extrapolated station

MD [ft]	Inclination [°]	Azimuth [°]	TVD [ft]	Vert Sect [ft]	North [ft]	East [ft]	DLS [°/100ft]	Comments
17120.00†	90.242	270.552	6937.18	9562.14	-645.91	-9540.31	0.00	
17161.54	90.242	270.552	6937.00 ²	9603.56	-645.51	-9581.84	0.00	End of Tangent

HOLE & CASING SECTIONS

- Ref Wellbore: GREELEY-ROTH 34N-2B-L PWB Ref Wellpath: GREELEY-ROTH 34N-2B-L PWP (REV-B.1)

String/Diameter	Start MD [ft]	End MD [ft]	Interval [ft]	Start TVD [ft]	End TVD [ft]	Start N/S [ft]	Start E/W [ft]	End N/S [ft]	End E/W [ft]
13.5in Open Hole	20.00	1750.00	1730.00	20.00	1739.10	0.00	0.00	-76.35	116.23
9.625in Casing Surface	20.00	1750.00	1730.00	20.00	1739.10	0.00	0.00	-76.35	116.23
8.5in Open Hole	1750.00	17161.54	15411.54	1739.10	6937.00	-76.35	116.23	-645.51	-9581.84

TARGETS

Name	MD [ft]	TVD [ft]	North [ft]	East [ft]	Grid East [US ft]	Grid North [US ft]	Latitude	Longitude	Shape
SEC.01-T05N-R67W		23.00	1404.83	-2.24	3185545.50	1399477.36	40°25'40.991"N	104°50'00.640"W	polygon
SEC.02-T05N-R67W		23.00	1404.83	-2.24	3185545.50	1399477.36	40°25'40.991"N	104°50'00.640"W	polygon
2) GREELEY ROTH 34N-2B-L BHL ON PLAT (412'FSL & 460'FWL, SEC.02)	17161.54	6937.00	-645.51	-9581.84	3175981.97	1397355.16	40°25'20.712"N	104°52'04.501"W	circle
1) GREELEY ROTH 334N-2B-L TOP OF PROD ON PLAT (369'FSL & 150'FEL, SEC.01)	7428.43	6978.00	-588.37	149.50	3185712.21	1397485.43	40°25'21.295"N	104°49'58.678"W	circle



SRC ENERGY

Planned Wellpath Report

GREELEY-ROTH 34N-2B-L PWP (REV-B.1)

Page 9 of 9

**BAKER
HUGHES****REFERENCE WELLPATH IDENTIFICATION**

Operator	SRC ENERGY	Slot	SLOT#23 GREELEY-ROTH 34N-2B-L (963'FSL & 294'FEL, SEC.01)
Area	COLORADO	Well	GREELEY-ROTH 34N-2B-L
Field	WELD COUNTY (NAD83,TRUE NORTH)	Wellbore	GREELEY-ROTH 34N-2B-L PWB
Facility	SEC.01-T05N-R67W		

SURVEY PROGRAM -**Ref Wellbore: GREELEY-ROTH 34N-2B-L PWB Ref Wellpath: GREELEY-ROTH 34N-2B-L PWP (REV-B.1)**

Start MD [ft]	End MD [ft]	Positional Uncertainty Model	Log Name/Comment	Wellbore
20.00	1750.00	Custom BHI NaviTrak (IFR1, Standard Rotating+Axial Corr) (Rockies 0.03Gt model)		GREELEY-ROTH 34N-2B-L PWB
1750.00	17161.54	Custom BHI AutoTrak Curve (IFR1, Short) (Rockies 0.03Gt model)		GREELEY-ROTH 34N-2B-L PWB