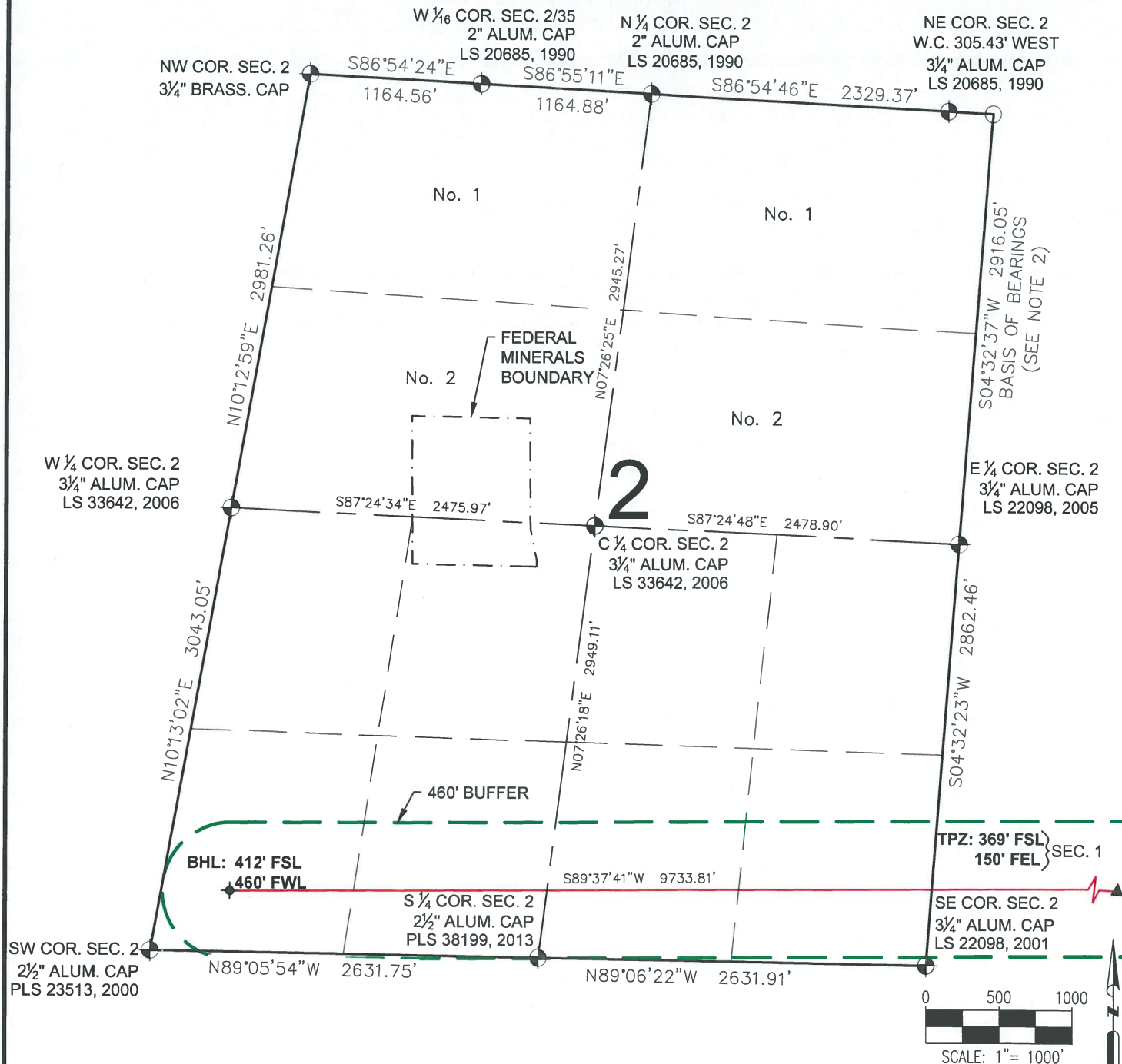


GREELEY-ROTHE 34N-2B-L WELL LOCATION CERTIFICATE



LEGEND

- ⊕ = EXISTING MONUMENT
- = CALCULATED POSITION
- = PROPOSED WELL
- ⬮ = BOTTOM HOLE
- ▲ = TOP OF PRODUCTION ZONE
- TPZ = TOP OF PRODUCTION ZONE
- BHL = BOTTOM HOLE LOCATION

BRIAN C. RITZ, PLS 38452
COLORADO LICENSED PROFESSIONAL LAND SURVEYOR
FOR AND ON BEHALF OF P.F.S., LLC
d.b.a. ASCENT GEOMATICS SOLUTIONS



SHEET 2 OF 2



FIELD DATE:
03-09-17

DRAWING DATE:
08-08-17

BY:
RMC

CHECKED BY:
KAD

WELL NAME:
GREELEY-ROTHE 34N-2B-L

SURFACE LOCATION:
SE 1/4 SE 1/4 SEC. 1, T5N, R67W, 6TH P.M.
WELD COUNTY, COLORADO

PREPARED FOR:



SRC ENERGY