

BONANZA CREEK OIL COMPANY

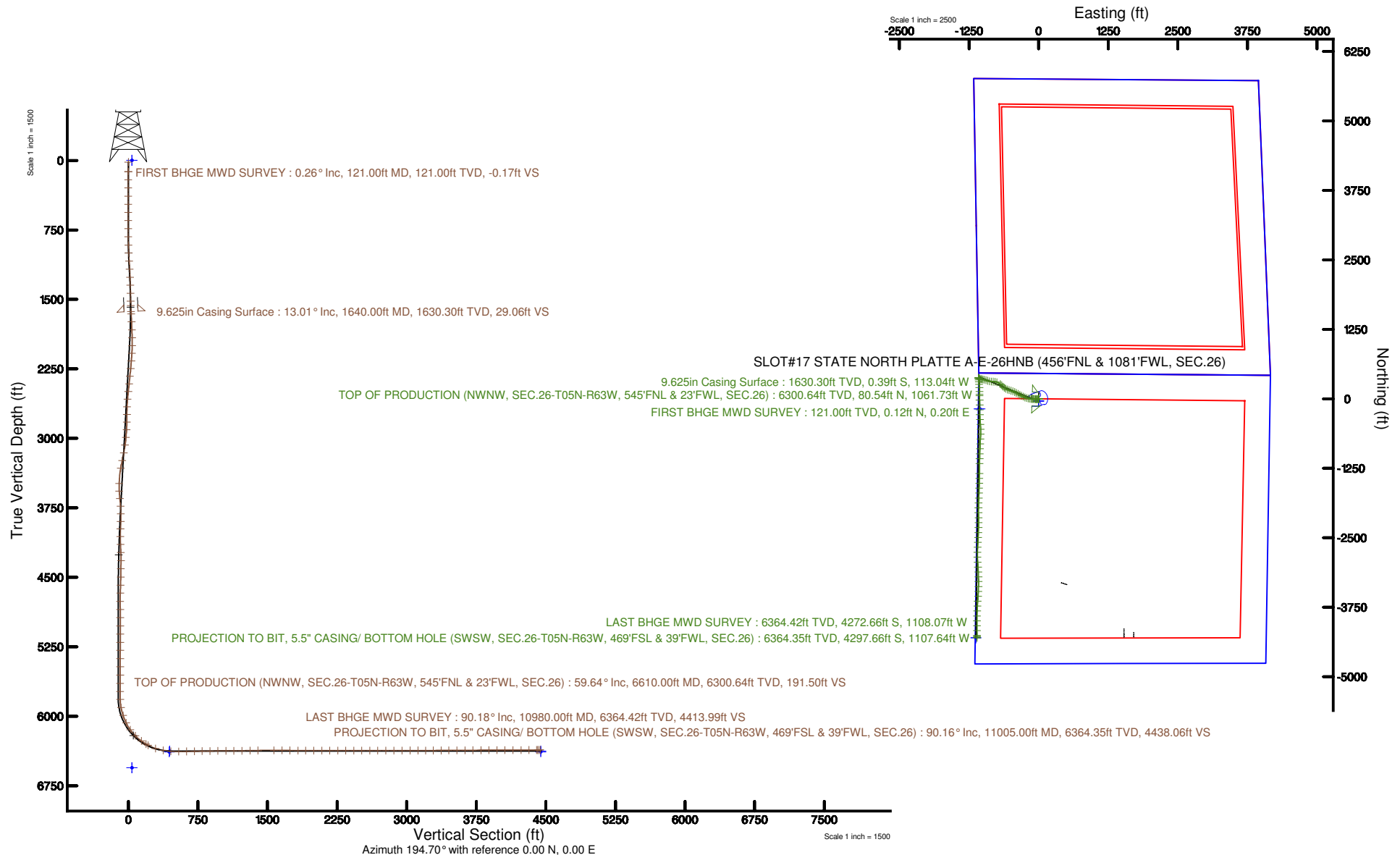
Location: COLORADO Slot: SLOT#17 STATE NORTH PLATTE A-E-26HNB (456°FNL & 1081°FWL, SEC.26)
Field: WELD COUNTY Well: STATE NORTH PLATTE A-E-26HNB
Facility: SEC.26-T5N-R63W Wellbore: STATE NORTH PLATTE A-E-26HNB PWB

Plot reference wellbore is STATE NORTH PLATTE A-E-26HNB PWB (REV C-0)	Grid System: NAD83 Lambert Colorado SP, Northern Zone (2011), US feet
True vertical depths are referenced to XTREME 19 (456°FNL & 1793°FWS) (PWB)	Wellsbore was transformed from a different geoidic datum
Measured depths are referenced to XTREME 19 (456°FNL & 1793°FWS) (PWB)	North Reference: True north
XTREME 19 (456°FNL & 1793°FWS) (PWB) to Mean Sea Level: 4554 feet	Scale: True distance
Mean Sea Level to Mud line (in Slot) SLOT#17 STATE NORTH PLATTE A-E-26HNB (456°FNL & 1081°FWL, SEC.26): 0 feet	Depths are in feet
Coordinates are in feet referenced to Slot	Created by: camptec on 2017-12-11
	Drawn: camptec



BGGM (1900.0 to 2018.0) Dip: 66.91° Field: 52406.7 nT
Magnetic North is 8.14 degrees East of True North (at 10/16/2017)

To correct azimuth from Magnetic to True add 8.14 degrees





Actual Wellpath Report

STATE NORTH PLATTE A-E-26HNB AWP

Page 1 of 8



REFERENCE WELLPATH IDENTIFICATION			
Operator	BONANZA CREEK OIL COMPANY	Slot	SLOT#17 STATE NORTH PLATTE A-E-26HNB (456'FNL & 1081'FWL, SEC.26)
Area	COLORADO	Well	STATE NORTH PLATTE A-E-26HNB
Field	WELD COUNTY	Wellbore	STATE NORTH PLATTE A-E-26HNB AWB
Facility	SEC.26-T5N-R63W		

REPORT SETUP INFORMATION			
Projection System	NAD83 / Lambert Colorado SP, Northern Zone (501), US feet	Software System	WellArchitect® 5.0
North Reference	True	User	Cantryat
Scale	0.999959	Report Generated	12/11/2017 at 10:28:31 AM
Convergence at slot	0.71° East	Database/Source file	Denver/STATE_NORTH_PLATTE_A-E-26HNB_AWP.xml

WELLPATH LOCATION						
	Local coordinates		Grid coordinates		Geographic coordinates	
	North[ft]	East[ft]	Easting[US ft]	Northing[US ft]	Latitude	Longitude
Slot Location	-0.61	124.61	3304075.44	1381775.46	40°22'34.458"N	104°24'30.826"W
Facility Reference Pt			3303950.84	1381774.54	40°22'34.464"N	104°24'32.436"W
Field Reference Pt			3224525.77	1254425.87	40°01'44.400"N	104°41'53.556"W

WELLPATH DATUM			
Calculation method	Minimum curvature	XTREME 19 (4567'GL + 17'KB) (RKB) to Facility Vertical Datum	4584.00ft
Horizontal Reference Pt	Slot	XTREME 19 (4567'GL + 17'KB) (RKB) to Mean Sea Level	4584.00ft
Vertical Reference Pt	XTREME 19 (4567'GL + 17'KB) (RKB)	XTREME 19 (4567'GL + 17'KB) (RKB) to Mud Line at Slot (SLOT#17 STATE NORTH PLATTE A-E-26HNB (456'FNL & 1081'FWL, SEC.26))	4584.00ft
MD Reference Pt	XTREME 19 (4567'GL + 17'KB) (RKB)	Section Origin	N 0.00, E 0.00 ft
Field Vertical Reference	Mean Sea Level	Section Azimuth	194.70°



Actual Wellpath Report

STATE NORTH PLATTE A-E-26HNB AWP
Page 2 of 8



REFERENCE WELLPATH IDENTIFICATION

Operator	BONANZA CREEK OIL COMPANY	Slot	SLOT#17 STATE NORTH PLATTE A-E-26HNB (456°FNL & 1081°FWL, SEC.26)
Area	COLORADO	Well	STATE NORTH PLATTE A-E-26HNB
Field	WELD COUNTY	Wellbore	STATE NORTH PLATTE A-E-26HNB AWB
Facility	SEC.26-T5N-R63W		

WELLPATH DATA (127 stations) † = interpolated/extrapolated station

MD (ft)	Inclination (°)	Azimuth (°)	TVD (ft)	Vert Sect (ft)	North (ft)	East (ft)	Latitude	Longitude	DLS (°/100ft)	Comments
0.00†	0.000	58.730	0.00	0.00	0.00	0.00	40°22'34.458"N	104°24'30.826"W	0.00	
17.00	0.000	58.730	17.00	0.00	0.00	0.00	40°22'34.458"N	104°24'30.826"W	0.00	
121.00	0.260	58.730	121.00	-0.17	0.12	0.20	40°22'34.459"N	104°24'30.823"W	0.25	FIRST BHGE MWD SURVEY
208.00	0.310	46.400	208.00	-0.51	0.39	0.54	40°22'34.462"N	104°24'30.819"W	0.09	
296.00	0.220	106.130	296.00	-0.71	0.50	0.88	40°22'34.463"N	104°24'30.815"W	0.31	
385.00	0.280	112.150	385.00	-0.68	0.38	1.24	40°22'34.462"N	104°24'30.810"W	0.07	
473.00	0.420	69.080	473.00	-0.84	0.41	1.74	40°22'34.462"N	104°24'30.803"W	0.33	
561.00	0.350	88.580	560.99	-1.10	0.53	2.31	40°22'34.463"N	104°24'30.796"W	0.17	
649.00	0.340	64.630	648.99	-1.34	0.65	2.82	40°22'34.464"N	104°24'30.790"W	0.16	
735.00	0.370	36.470	734.99	-1.76	0.98	3.21	40°22'34.468"N	104°24'30.785"W	0.20	
824.00	1.380	243.770	823.98	-1.33	0.74	2.42	40°22'34.465"N	104°24'30.795"W	1.93	
913.00	3.570	252.420	912.89	0.85	-0.57	-1.18	40°22'34.452"N	104°24'30.841"W	2.49	
999.00	5.370	254.360	998.63	4.32	-2.47	-7.61	40°22'34.434"N	104°24'30.924"W	2.10	
1087.00	7.250	255.840	1086.09	9.08	-4.93	-16.96	40°22'34.409"N	104°24'31.045"W	2.14	
1176.00	7.950	262.700	1174.31	14.09	-7.09	-28.51	40°22'34.388"N	104°24'31.194"W	1.29	
1265.00	9.040	268.320	1262.34	18.37	-8.08	-41.61	40°22'34.378"N	104°24'31.364"W	1.54	
1351.00	10.320	277.410	1347.11	21.25	-7.28	-56.00	40°22'34.386"N	104°24'31.550"W	2.31	
1439.00	10.660	279.800	1433.64	22.95	-4.88	-71.84	40°22'34.410"N	104°24'31.754"W	0.63	
1525.00	11.820	276.990	1517.99	24.81	-2.45	-88.42	40°22'34.434"N	104°24'31.968"W	1.49	
1575.00	12.340	275.790	1566.89	26.32	-1.29	-98.82	40°22'34.445"N	104°24'32.103"W	1.15	
1667.00	13.300	269.930	1656.60	30.54	-0.31	-119.18	40°22'34.455"N	104°24'32.366"W	1.76	
1755.00	13.880	275.210	1742.14	34.86	0.63	-139.82	40°22'34.464"N	104°24'32.633"W	1.56	
1845.00	15.780	277.120	1829.13	38.26	3.13	-162.71	40°22'34.489"N	104°24'32.928"W	2.18	
1934.00	17.590	280.870	1914.39	40.75	7.17	-187.93	40°22'34.529"N	104°24'33.254"W	2.37	
2023.00	20.020	285.970	1998.63	41.31	13.90	-215.79	40°22'34.595"N	104°24'33.614"W	3.29	
2113.00	22.290	293.430	2082.58	38.38	24.93	-246.27	40°22'34.704"N	104°24'34.008"W	3.91	
2202.00	22.900	296.200	2164.75	32.36	39.28	-277.29	40°22'34.846"N	104°24'34.409"W	1.38	
2291.00	22.850	297.380	2246.75	25.12	54.87	-308.18	40°22'35.000"N	104°24'34.808"W	0.52	
2381.00	22.760	299.570	2329.72	16.81	71.50	-338.84	40°22'35.165"N	104°24'35.204"W	0.95	
2470.00	22.960	298.510	2411.73	8.25	88.28	-369.06	40°22'35.330"N	104°24'35.595"W	0.51	



Actual Wellpath Report

STATE NORTH PLATTE A-E-26HNB AWP
Page 3 of 8



REFERENCE WELLPATH IDENTIFICATION			
Operator	BONANZA CREEK OIL COMPANY	Slot	SLOT#17 STATE NORTH PLATTE A-E-26HNB (456'FNL & 1081'FWL, SEC.26)
Area	COLORADO	Well	STATE NORTH PLATTE A-E-26HNB
Field	WELD COUNTY	Wellbore	STATE NORTH PLATTE A-E-26HNB AWB
Facility	SEC.26-T5N-R63W		

WELLPATH DATA (127 stations)										
MD (ft)	Inclination (°)	Azimuth (°)	TVD (ft)	Vert Sect (ft)	North (ft)	East (ft)	Latitude	Longitude	DLS (°/100ft)	Comments
2559.00	22.710	299.000	2493.75	-0.14	104.90	-399.34	40°22'35.495"N	104°24'35.986"W	0.35	
2648.00	22.900	297.130	2575.80	-8.11	121.12	-429.78	40°22'35.655"N	104°24'36.379"W	0.84	
2738.00	22.900	290.410	2658.72	-13.62	135.22	-461.78	40°22'35.794"N	104°24'36.793"W	2.90	
2827.00	22.740	284.580	2740.76	-15.31	145.59	-494.66	40°22'35.897"N	104°24'37.217"W	2.55	
2917.00	22.590	287.450	2823.81	-16.10	155.15	-527.99	40°22'35.991"N	104°24'37.648"W	1.24	
3006.00	22.460	292.760	2906.03	-19.31	166.86	-559.98	40°22'36.107"N	104°24'38.061"W	2.29	
3096.00	21.840	299.060	2989.40	-25.87	181.64	-590.47	40°22'36.253"N	104°24'38.455"W	2.73	
3185.00	20.510	306.520	3072.41	-35.77	198.96	-617.47	40°22'36.424"N	104°24'38.804"W	3.37	
3275.00	21.210	313.880	3156.52	-49.58	219.64	-641.88	40°22'36.628"N	104°24'39.120"W	3.01	
3364.00	21.830	316.060	3239.32	-66.04	242.71	-664.97	40°22'36.856"N	104°24'39.418"W	1.14	
3454.00	21.950	309.660	3322.84	-81.85	265.50	-689.54	40°22'37.081"N	104°24'39.735"W	2.65	
3632.00	23.430	289.510	3487.31	-98.88	298.60	-748.60	40°22'37.409"N	104°24'40.499"W	4.42	
3722.00	23.630	277.240	3569.88	-98.04	306.86	-783.38	40°22'37.490"N	104°24'40.948"W	5.44	
3809.00	22.320	269.950	3649.99	-91.57	309.04	-817.20	40°22'37.512"N	104°24'41.385"W	3.60	
3898.00	22.230	274.150	3732.35	-84.18	310.24	-850.90	40°22'37.524"N	104°24'41.820"W	1.79	
3988.00	22.100	283.390	3815.73	-80.68	315.40	-884.36	40°22'37.575"N	104°24'42.253"W	3.87	
4076.00	22.300	290.960	3897.22	-82.12	325.21	-916.06	40°22'37.671"N	104°24'42.662"W	3.26	
4161.00	20.530	288.240	3976.35	-84.80	335.64	-945.28	40°22'37.775"N	104°24'43.040"W	2.39	
4249.00	18.510	285.660	4059.29	-85.99	344.24	-973.39	40°22'37.860"N	104°24'43.403"W	2.50	
4338.00	15.390	276.290	4144.43	-84.50	349.35	-998.74	40°22'37.910"N	104°24'43.731"W	4.65	
4428.00	11.890	272.240	4231.88	-80.75	351.02	-1019.88	40°22'37.926"N	104°24'44.004"W	4.03	
4517.00	11.650	287.400	4319.03	-79.19	354.07	-1037.62	40°22'37.957"N	104°24'44.233"W	3.48	
4607.00	9.780	292.990	4407.46	-80.73	359.77	-1053.33	40°22'38.013"N	104°24'44.436"W	2.37	
4697.00	6.450	287.760	4496.55	-82.10	364.30	-1065.19	40°22'38.058"N	104°24'44.589"W	3.79	
4785.00	4.280	305.400	4584.16	-83.52	367.71	-1072.57	40°22'38.091"N	104°24'44.685"W	3.07	
4872.00	3.610	330.440	4670.96	-86.63	371.98	-1076.57	40°22'38.134"N	104°24'44.736"W	2.10	
4960.00	0.740	192.690	4758.91	-88.05	373.83	-1078.06	40°22'38.152"N	104°24'44.756"W	4.76	
5048.00	0.070	186.180	4846.91	-87.43	373.22	-1078.19	40°22'38.146"N	104°24'44.757"W	0.76	
5137.00	0.070	275.410	4935.91	-87.37	373.18	-1078.25	40°22'38.145"N	104°24'44.758"W	0.11	
5225.00	0.210	204.130	5023.91	-87.20	373.03	-1078.37	40°22'38.144"N	104°24'44.760"W	0.23	



Actual Wellpath Report

STATE NORTH PLATTE A-E-26HNB AWP
Page 4 of 8



REFERENCE WELLPATH IDENTIFICATION			
Operator	BONANZA CREEK OIL COMPANY	Slot	SLOT#17 STATE NORTH PLATTE A-E-26HNB (456'FNL & 1081'FWL, SEC.26)
Area	COLORADO	Well	STATE NORTH PLATTE A-E-26HNB
Field	WELD COUNTY	Wellbore	STATE NORTH PLATTE A-E-26HNB AWB
Facility	SEC.26-T5N-R63W		

WELLPATH DATA (127 stations) † = interpolated/extrapolated station										
MD [ft]	Inclination [°]	Azimuth [°]	TVD [ft]	Vert Sect [ft]	North [ft]	East [ft]	Latitude	Longitude	DLS [°/100ft]	Comments
5313.00	0.230	64.820	5111.91	-87.15	372.96	-1078.28	40°22'38.143"N	104°24'44.758"W	0.47	
5403.00	0.310	271.030	5201.91	-87.21	373.04	-1078.36	40°22'38.144"N	104°24'44.759"W	0.58	
5490.00	0.440	343.920	5288.91	-87.44	373.37	-1078.69	40°22'38.147"N	104°24'44.764"W	0.53	
5578.00	0.330	127.350	5376.90	-87.63	373.54	-1078.58	40°22'38.149"N	104°24'44.762"W	0.83	
5667.00	0.200	96.800	5465.90	-87.56	373.36	-1078.22	40°22'38.147"N	104°24'44.758"W	0.21	
5757.00	0.100	58.920	5555.90	-87.64	373.39	-1078.00	40°22'38.147"N	104°24'44.755"W	0.15	
5846.00	0.220	25.940	5644.90	-87.86	373.58	-1077.85	40°22'38.149"N	104°24'44.753"W	0.16	
5933.00	0.070	261.890	5731.90	-88.00	373.72	-1077.83	40°22'38.151"N	104°24'44.753"W	0.31	
6019.00	0.650	185.820	5817.90	-87.50	373.23	-1077.94	40°22'38.146"N	104°24'44.754"W	0.74	
6107.00	11.370	176.570	5905.29	-78.74	364.05	-1077.47	40°22'38.055"N	104°24'44.748"W	12.19	
6195.00	18.940	181.050	5990.17	-56.58	341.08	-1077.21	40°22'37.828"N	104°24'44.745"W	8.70	
6283.00	27.740	173.550	6070.91	-23.53	306.37	-1075.17	40°22'37.485"N	104°24'44.718"W	10.54	
6372.00	37.050	172.910	6145.97	20.78	259.08	-1069.52	40°22'37.018"N	104°24'44.645"W	10.47	
6459.00	46.580	176.070	6210.75	75.19	201.41	-1064.10	40°22'36.448"N	104°24'44.575"W	11.22	
6547.00	54.730	179.750	6266.50	140.30	133.47	-1061.75	40°22'35.777"N	104°24'44.545"W	9.81	
6610.00†	59.635	180.191	6300.64	191.50	80.54	-1061.73	40°22'35.254"N	104°24'44.544"W	7.81	TOP OF PRODUCTION (NWNW, SEC.26-T05N-R63W, 545'FNL & 23'FWL, SEC.26)
6636.00	61.660	180.360	6313.38	213.44	57.88	-1061.84	40°22'35.030"N	104°24'44.546"W	7.81	
6725.00	72.500	177.980	6347.99	292.28	-23.95	-1060.59	40°22'34.221"N	104°24'44.530"W	12.43	
6814.00	81.690	179.590	6367.85	375.62	-110.59	-1058.77	40°22'33.365"N	104°24'44.506"W	10.47	
6901.00	85.010	179.580	6377.92	459.03	-196.99	-1058.14	40°22'32.511"N	104°24'44.498"W	3.82	
6989.00	90.920	178.610	6381.05	543.70	-284.88	-1056.75	40°22'31.643"N	104°24'44.480"W	6.81	
7078.00	90.920	176.700	6379.62	628.78	-373.79	-1053.11	40°22'30.764"N	104°24'44.433"W	2.15	
7166.00	91.050	175.480	6378.11	712.16	-461.57	-1047.11	40°22'29.897"N	104°24'44.355"W	1.39	
7254.00	90.950	176.990	6376.57	795.62	-549.37	-1041.34	40°22'29.029"N	104°24'44.281"W	1.72	
7341.00	90.800	182.500	6375.24	879.63	-636.32	-1040.95	40°22'28.170"N	104°24'44.276"W	6.33	
7429.00	90.950	184.140	6373.90	965.88	-724.16	-1046.05	40°22'27.302"N	104°24'44.341"W	1.87	
7516.00	89.890	182.820	6373.27	1051.22	-810.99	-1051.33	40°22'26.444"N	104°24'44.410"W	1.95	
7604.00	89.850	182.620	6373.47	1137.30	-898.89	-1055.50	40°22'25.575"N	104°24'44.463"W	0.23	
7694.00	91.140	181.530	6372.70	1225.12	-988.83	-1058.76	40°22'24.686"N	104°24'44.506"W	1.88	
7783.00	90.800	180.500	6371.19	1311.58	-1077.80	-1060.34	40°22'23.807"N	104°24'44.526"W	1.22	



Actual Wellpath Report

STATE NORTH PLATTE A-E-26HNB AWP
Page 5 of 8



REFERENCE WELLPATH IDENTIFICATION			
Operator	BONANZA CREEK OIL COMPANY	Slot	SLOT#17 STATE NORTH PLATTE A-E-26HNB (456'FNL & 1081'FWL, SEC.26)
Area	COLORADO	Well	STATE NORTH PLATTE A-E-26HNB
Field	WELD COUNTY	Wellbore	STATE NORTH PLATTE A-E-26HNB AWB
Facility	SEC.26-T5N-R63W		

WELLPATH DATA (127 stations)										
MD (ft)	Inclination (°)	Azimuth (°)	TVD (ft)	Vert Sect (ft)	North (ft)	East (ft)	Latitude	Longitude	DLS (°/100ft)	Comments
7872.00	91.110	180.820	6369.71	1397.91	-1166.78	-1061.36	40°22'22.928"N	104°24'44.539"W	0.50	
8049.00	89.910	181.110	6368.13	1569.84	-1343.75	-1064.34	40°22'21.179"N	104°24'44.577"W	0.70	
8138.00	89.480	180.870	6368.60	1656.30	-1432.73	-1065.88	40°22'20.300"N	104°24'44.597"W	0.55	
8226.00	89.480	181.000	6369.40	1741.77	-1520.72	-1067.32	40°22'19.431"N	104°24'44.616"W	0.15	
8314.00	89.820	181.610	6369.94	1827.37	-1608.69	-1069.32	40°22'18.561"N	104°24'44.642"W	0.79	
8401.00	89.850	181.870	6370.19	1912.16	-1695.65	-1071.96	40°22'17.702"N	104°24'44.676"W	0.30	
8490.00	89.940	181.840	6370.35	1998.93	-1784.60	-1074.84	40°22'16.823"N	104°24'44.713"W	0.11	
8578.00	89.820	182.080	6370.54	2084.76	-1872.55	-1077.85	40°22'15.954"N	104°24'44.752"W	0.30	
8667.00	90.150	181.580	6370.56	2171.53	-1961.51	-1080.69	40°22'15.075"N	104°24'44.788"W	0.67	
8756.00	89.970	179.180	6370.47	2257.76	-2050.50	-1081.28	40°22'14.195"N	104°24'44.796"W	2.70	
8845.00	89.720	178.760	6370.71	2343.42	-2139.48	-1079.69	40°22'13.316"N	104°24'44.775"W	0.55	
8935.00	90.000	180.350	6370.93	2430.29	-2229.48	-1078.99	40°22'12.427"N	104°24'44.766"W	1.79	
9022.00	89.850	181.950	6371.04	2514.87	-2316.46	-1080.73	40°22'11.567"N	104°24'44.789"W	1.85	
9112.00	90.220	181.710	6370.99	2602.61	-2406.41	-1083.61	40°22'10.678"N	104°24'44.826"W	0.49	
9199.00	90.310	182.220	6370.59	2687.47	-2493.36	-1086.59	40°22'09.819"N	104°24'44.864"W	0.60	
9288.00	90.150	183.570	6370.23	2774.58	-2582.24	-1091.08	40°22'08.941"N	104°24'44.922"W	1.53	
9377.00	90.120	183.410	6370.02	2861.89	-2671.08	-1096.50	40°22'08.063"N	104°24'44.992"W	0.18	
9467.00	90.060	181.480	6369.88	2949.83	-2760.99	-1100.34	40°22'07.175"N	104°24'45.042"W	2.15	
9556.00	90.180	178.560	6369.69	3035.92	-2849.98	-1100.37	40°22'06.295"N	104°24'45.042"W	3.28	
9645.00	89.780	175.520	6369.72	3120.71	-2938.85	-1095.78	40°22'05.417"N	104°24'44.983"W	3.45	
9733.00	89.970	176.200	6369.91	3204.00	-3026.62	-1089.42	40°22'04.550"N	104°24'44.901"W	0.80	
9820.00	90.370	177.390	6369.66	3286.78	-3113.48	-1084.56	40°22'03.691"N	104°24'44.838"W	1.44	
9908.00	90.310	178.880	6369.13	3371.13	-3201.43	-1081.70	40°22'02.822"N	104°24'44.801"W	1.69	
9994.00	90.310	179.700	6368.67	3454.03	-3287.42	-1080.63	40°22'01.972"N	104°24'44.787"W	0.95	
10083.00	90.340	181.130	6368.16	3540.28	-3376.42	-1081.28	40°22'01.093"N	104°24'44.795"W	1.61	
10173.00	90.280	182.440	6367.68	3628.00	-3466.37	-1084.08	40°22'00.204"N	104°24'44.831"W	1.46	
10261.00	90.280	183.800	6367.25	3714.20	-3554.24	-1088.87	40°21'59.336"N	104°24'44.893"W	1.55	
10349.00	90.400	184.550	6366.72	3800.72	-3642.00	-1095.27	40°21'58.469"N	104°24'44.976"W	0.86	
10436.00	90.220	183.140	6366.25	3886.16	-3728.80	-1101.11	40°21'57.611"N	104°24'45.051"W	1.63	
10525.00	89.970	182.070	6366.11	3973.19	-3817.71	-1105.15	40°21'56.732"N	104°24'45.103"W	1.23	



Actual Wellpath Report

STATE NORTH PLATTE A-E-26HNB AWP

Page 6 of 8



REFERENCE WELLPATH IDENTIFICATION			
Operator	BONANZA CREEK OIL COMPANY	Slot	SLOT#17 STATE NORTH PLATTE A-E-26HNB (456'FNL & 1081'FWL, SEC.26)
Area	COLORADO	Well	STATE NORTH PLATTE A-E-26HNB
Field	WELD COUNTY	Wellbore	STATE NORTH PLATTE A-E-26HNB AWP
Facility	SEC.26-T5N-R63W		

WELLPATH DATA (127 stations)										
MD [ft]	Inclination [°]	Azimuth [°]	TVD [ft]	Vert Sect [ft]	North [ft]	East [ft]	Latitude	Longitude	DLS [°/100ft]	Comments
10613.00	90.220	180.500	6365.96	4058.78	3905.68	-1107.13	40°21'55.863"N	104°24'45.129"W	1.81	
10702.00	90.220	180.700	6365.62	4145.10	3994.68	-1108.06	40°21'54.984"N	104°24'45.141"W	0.22	
10791.00	90.370	180.380	6365.16	4231.40	4083.67	-1108.90	40°21'54.104"N	104°24'45.152"W	0.40	
10879.00	90.250	179.820	6364.68	4316.55	4171.67	-1109.05	40°21'53.235"N	104°24'45.153"W	0.65	
10966.00	90.060	179.160	6364.45	4400.50	4258.67	-1108.28	40°21'52.375"N	104°24'45.143"W	0.79	
10980.00	90.180	179.110	6364.42	4413.99	4272.66	-1108.07	40°21'52.237"N	104°24'45.141"W	0.93	LAST BHGE MWD SURVEY
11005.00	90.155	178.942	6364.35	4438.06	4297.66	-1107.64	40°21'51.990"N	104°24'45.135"W	0.68	PROJECTION TO BIT, 5.5" CASING/ BOTTOM HOLE (SWSW, SEC.26-T05N-R63W, 469'FSL & 39'FWL, SEC.26)

HOLE & CASING SECTIONS - Ref Wellbore: STATE NORTH PLATTE A-E-26HNB AWP Ref Wellpath: STATE NORTH PLATTE A-E-26HNB AWP									
String/Diameter	Start MD [ft]	End MD [ft]	Interval [ft]	Start TVD [ft]	End TVD [ft]	Start N/S [ft]	Start E/W [ft]	End N/S [ft]	End E/W [ft]
13.5in Open Hole	17.00	1630.00	1613.00	17.00	1620.56	0.00	0.00	-0.46	-110.80
9.625in Casing Surface	17.00	1640.00	1623.00	17.00	1630.30	0.00	0.00	-0.39	-113.04
8.5in Open Hole	1630.00	11005.00	9375.00	1620.56	6364.35	-0.46	-110.80	-4297.66	-1107.64



Actual Wellpath Report

STATE NORTH PLATTE A-E-26HNB AWP

Page 7 of 8



REFERENCE WELLPATH IDENTIFICATION

Operator	BONANZA CREEK OIL COMPANY	Slot	SLOT#17 STATE NORTH PLATTE A-E-26HNB (456'FNL & 1081'FWL, SEC.26)
Area	COLORADO	Well	STATE NORTH PLATTE A-E-26HNB
Field	WELD COUNTY	Wellbore	STATE NORTH PLATTE A-E-26HNB AWB
Facility	SEC.26-T5N-R63W		

TARGETS

Name	TVD [ft]	North [ft]	East [ft]	Grid East [US ft]	Grid North [US ft]	Latitude	Longitude	Shape
SEC.23-T05N-R63W	-2.00	-40.05	-0.37	3304075.56	1381735.41	40°22'34.062"N	104°24'30.831"W	polygon
SEC.26-T05N-R63W	-2.00	-40.05	-0.37	3304075.56	1381735.41	40°22'34.062"N	104°24'30.831"W	polygon
STATE NORTH PLATTE A-E-26HNB BHL REV-3 (470'FSL & 10'FWL, SEC.26)	6375.00	-4299.24	-1127.83	3303000.65	1377462.85	40°21'51.974"N	104°24'45.396"W	point
STATE NORTH PLATTE A-E-26HNB TARGET REV-4 (645'FNL & 10'FWL, SEC.26)	6375.00	-180.01	-1072.53	3303005.25	1381582.27	40°22'32.679"N	104°24'44.684"W	point
STATE NORTH PLATTE A-E-26HNB BHL REV-2 (470'FSL & 10'FWL, SEC.26)	6385.00	-4299.24	-1127.83	3303000.65	1377462.85	40°21'51.974"N	104°24'45.396"W	point
STATE NORTH PLATTE A-E-26HNB TARGET REV-3 (645'FNL & 28'FWL, SEC.26)	6385.00	-180.01	-1054.50	3303023.27	1381582.49	40°22'32.679"N	104°24'44.451"W	point
SEC.23-T05N-R63W 460' SETBACK	6556.00	-40.05	-0.37	3304075.56	1381735.41	40°22'34.062"N	104°24'30.831"W	polygon
SEC.26-T05N-R63W 460' SETBACK	6556.00	-40.05	-0.37	3304075.56	1381735.41	40°22'34.062"N	104°24'30.831"W	polygon

WELLPATH COMPOSITION - Ref Wellbore: STATE NORTH PLATTE A-E-26HNB AWB Ref Wellpath: STATE NORTH PLATTE A-E-26HNB AWP

Start MD [ft]	End MD [ft]	Positional Uncertainty Model	Log Name/Comment	Wellbore
17.00	1575.00	Custom BHI NaviTrak (Standard Rotating+Axial Corr) (Rockies 0.03Gt model)	BHI MWD NAVITRAK+SR+AC +ROCKIES <121-1575>	STATE NORTH PLATTE A-E-26HNB AWB
1575.00	10980.00	Custom BHI AutoTrak Curve (Axial Corr, Short spacing) (Rockies 0.03Gt model)	BHI ATCURVE+AC+SS+ROCKIES <1667-10980>	STATE NORTH PLATTE A-E-26HNB AWB
10980.00	11005.00	Blind Drilling (std)	Projection to bit	STATE NORTH PLATTE A-E-26HNB AWB



Actual Wellpath Report
STATE NORTH PLATTE A-E-26HNB AWP
Page 8 of 8



REFERENCE WELLPATH IDENTIFICATION			
Operator	BONANZA CREEK OIL COMPANY	Slot	SLOT#17 STATE NORTH PLATTE A-E-26HNB (456'FNL & 1081'FWL, SEC.26)
Area	COLORADO	Well	STATE NORTH PLATTE A-E-26HNB
Field	WELD COUNTY	Wellbore	STATE NORTH PLATTE A-E-26HNB AWB
Facility	SEC.26-T5N-R63W		

WELLPATH COMMENTS				
MD [ft]	Inclination [°]	Azimuth [°]	TVD [ft]	Comment
121.00	0.260	58.730	121.00	FIRST BHGE MWD SURVEY
6610.00	59.635	180.191	6300.64	TOP OF PRODUCTION (NWNW, SEC.26-T05N-R63W, 545'FNL & 23'FWL, SEC.26)
10980.00	90.180	179.110	6364.42	LAST BHGE MWD SURVEY
11005.00	90.155	178.942	6364.35	PROJECTION TO BIT, 5.5" CASING/ BOTTOM HOLE (SWSW, SEC.26-T05N-R63W, 469'FSL & 39'FWL, SEC.26)