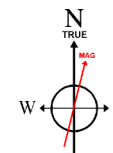


Location:	COLORADO	Slot:	SLOT#16 NORTH PLATTE O24-K21-23HNB (436'FNL & 1081'FWL, SEC.26)
Field:	WELD COUNTY	Well:	NORTH PLATTE O24-K21-23HNB
Facility:	SEC.26-T5N-R63W	Wellbore:	NORTH PLATTE O24-K21-23HNB PWB

For reference within a NORTH PLATTE QIA-Q21-20HKB PWP (REV 0-0)	GeoSystem (NORTH PLATTE) - Northern Zone (001) - US feet
True vertical depths are referenced to XTREME 19-40STK/24 = 1790 (000)	* Wellbore was transferred from a different project.
Surface depths are referenced to XTREME 19-40STK/24 = 1790 (000)	North Reference: True north
Measured depths are referenced to XTREME 19-40STK/24 = 1790 (000)	Scale: True distance
XTREME 19-40STK/24 = 1790 (000) is Mean Sea Level - 6504 feet	Depths are in feet
Mean Sea Level to Mud Line (Jct. SLOTHY'S NORTH PLATTE QIA-Q21-20HKB (40STK/24, 100TVPW, SEC. 30) - 0 feet	Created by: Central on 2017-12-08
Coordinates are in feet referenced to SGA	Database: Owner

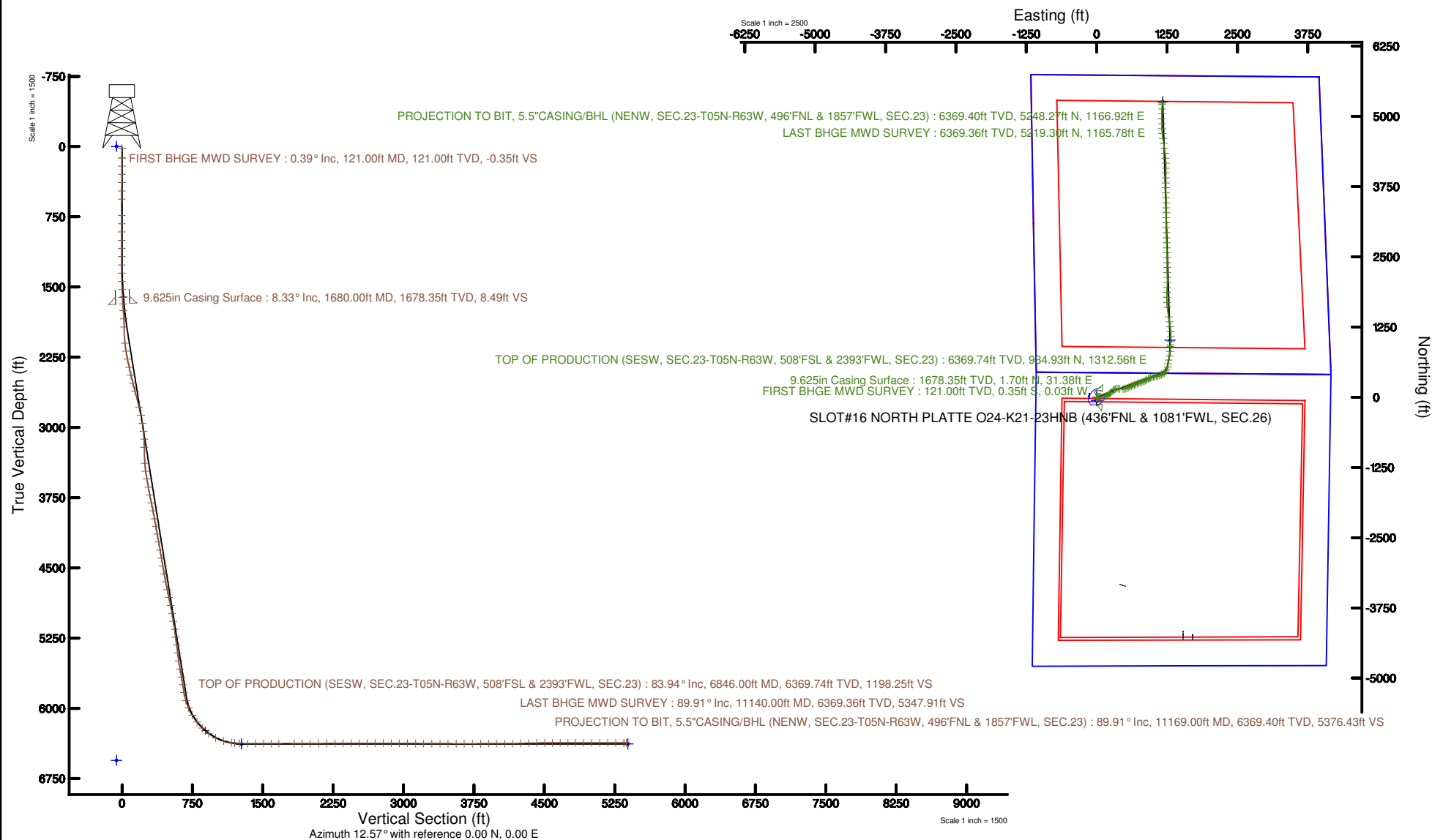


BGGM (1900.0 to 2019.0) Dip: 66.89° Field: 52380.9 nT  
Magnetic North is 8.15 degrees East of True North (at 10/10/2017)

To correct azimuth from Magnetic to True add 8.15 degrees



# BAKER HUGHES





# Actual Wellpath Report

NORTH PLATTE O24-K21-23HNB AWP

Page 1 of 8



## REFERENCE WELLPATH IDENTIFICATION

Operator	BONANZA CREEK OIL COMPANY	Slot	SLOT#16 NORTH PLATTE O24-K21-23HNB (436'FNL & 1081'FWL, SEC.26)
Area	COLORADO	Well	NORTH PLATTE O24-K21-23HNB
Field	WELD COUNTY	Wellbore	NORTH PLATTE O24-K21-23HNB AWB
Facility	SEC.26-T5N-R63W		

## REPORT SETUP INFORMATION

Projection System	NAD83 / Lambert Colorado SP, Northern Zone (501), US feet	Software System	WellArchitect® 5.0
North Reference	True	User	Cantryat
Scale	0.999959	Report Generated	12/8/2017 at 3:24:24 PM
Convergence at slot	0.71° East	Database/Source file	Denver/NORTH_PLATTE_O24-K21-23HNB_AWP.xml

## WELLPATH LOCATION

	Local coordinates		Grid coordinates		Geographic coordinates	
	North[ft]	East[ft]	Easting[US ft]	Northing[US ft]	Latitude	Longitude
Slot Location	19.38	124.71	3304075.30	1381795.45	40°22'34.655"N	104°24'30.825"W
Facility Reference Pt			3303950.84	1381774.54	40°22'34.464"N	104°24'32.436"W
Field Reference Pt			3224525.77	1254425.87	40°01'44.400"N	104°41'53.556"W

## WELLPATH DATUM

Calculation method	Minimum curvature	XTREME 19 (4567'GL + 17'KB) (RKB) to Facility Vertical Datum	4584.00ft
Horizontal Reference Pt	Slot	XTREME 19 (4567'GL + 17'KB) (RKB) to Mean Sea Level	4584.00ft
Vertical Reference Pt	XTREME 19 (4567'GL + 17'KB) (RKB)	XTREME 19 (4567'GL + 17'KB) (RKB) to Mud Line at Slot (SLOT#16 NORTH PLATTE O24-K21-23HNB (436'FNL & 1081'FWL, SEC.26))	4584.00ft
MD Reference Pt	XTREME 19 (4567'GL + 17'KB) (RKB)	Section Origin	N 0.00, E 0.00 ft
Field Vertical Reference	Mean Sea Level	Section Azimuth	12.57°



# Actual Wellpath Report

NORTH PLATTE O24-K21-23HNB AWP

Page 2 of 8



## REFERENCE WELLPATH IDENTIFICATION

Operator	BONANZA CREEK OIL COMPANY	Slot	SLOT#16 NORTH PLATTE O24-K21-23HNB (436'FNL & 1081'FWL, SEC.26)
Area	COLORADO	Well	NORTH PLATTE O24-K21-23HNB
Field	WELD COUNTY	Wellbore	NORTH PLATTE O24-K21-23HNB AWP
Facility	SEC.26-T5N-R63W		

## WELLPATH DATA (124 stations) † = interpolated/extrapolated station

MD [ft]	Inclination [°]	Azimuth [°]	TVD [ft]	Vert Sect [ft]	North [ft]	East [ft]	Latitude	Longitude	DLS [°/100ft]	Comments
0.00†	0.000	184.690	0.00	0.00	0.00	0.00	40°22'34.655"N	104°24'30.825"W	0.00	
17.00	0.000	184.690	17.00	0.00	0.00	0.00	40°22'34.655"N	104°24'30.825"W	0.00	
121.00	0.390	184.690	121.00	-0.35	-0.35	-0.03	40°22'34.652"N	104°24'30.825"W	0.38	FIRST BHGE MWD SURVEY
209.00	0.580	195.700	209.00	-1.09	-1.08	-0.17	40°22'34.645"N	104°24'30.827"W	0.24	
296.00	0.440	206.040	295.99	-1.86	-1.80	-0.44	40°22'34.638"N	104°24'30.830"W	0.19	
384.00	0.340	243.740	383.99	-2.35	-2.22	-0.82	40°22'34.634"N	104°24'30.835"W	0.31	
473.00	0.390	233.227	472.99	-2.74	-2.52	-1.30	40°22'34.631"N	104°24'30.841"W	0.09	
562.00	0.280	204.030	561.99	-3.19	-2.90	-1.63	40°22'34.627"N	104°24'30.846"W	0.22	
737.00	0.260	259.010	736.99	-3.77	-3.37	-2.20	40°22'34.622"N	104°24'30.853"W	0.14	
823.00	0.090	7.830	822.99	-3.78	-3.34	-2.38	40°22'34.623"N	104°24'30.855"W	0.35	
912.00	0.220	262.850	911.99	-3.76	-3.29	-2.54	40°22'34.623"N	104°24'30.857"W	0.29	
1001.00	0.170	162.040	1000.98	-3.94	-3.44	-2.67	40°22'34.622"N	104°24'30.859"W	0.34	
1087.00	0.230	245.810	1086.98	-4.15	-3.63	-2.79	40°22'34.620"N	104°24'30.861"W	0.31	
1175.00	0.220	130.410	1174.98	-4.33	-3.81	-2.82	40°22'34.618"N	104°24'30.861"W	0.43	
1264.00	1.090	100.220	1263.98	-4.38	-4.07	-1.86	40°22'34.615"N	104°24'30.849"W	1.02	
1353.00	2.870	85.930	1352.92	-3.70	-4.06	1.20	40°22'34.615"N	104°24'30.809"W	2.06	
1439.00	4.200	75.730	1438.76	-1.67	-3.13	6.40	40°22'34.625"N	104°24'30.742"W	1.70	
1527.00	5.320	77.870	1526.45	1.49	-1.48	13.51	40°22'34.641"N	104°24'30.650"W	1.29	
1613.00	7.000	82.330	1611.95	4.97	0.05	22.60	40°22'34.656"N	104°24'30.533"W	2.03	
1755.00	9.890	72.550	1752.41	14.07	4.87	42.82	40°22'34.704"N	104°24'30.271"W	2.27	
1844.00	11.630	87.330	1839.85	20.26	7.58	59.08	40°22'34.730"N	104°24'30.061"W	3.65	
1934.00	14.620	102.410	1927.52	22.68	5.56	79.24	40°22'34.710"N	104°24'29.801"W	5.03	
2113.00	16.820	82.550	2099.94	31.62	4.06	127.02	40°22'34.696"N	104°24'29.183"W	3.23	
2202.00	16.840	72.160	2185.15	42.55	9.68	152.07	40°22'34.751"N	104°24'28.860"W	3.38	
2291.00	16.830	58.200	2270.37	58.10	20.42	175.30	40°22'34.857"N	104°24'28.560"W	4.53	
2381.00	16.800	55.450	2356.52	76.74	34.67	197.09	40°22'34.998"N	104°24'28.278"W	0.88	
2470.00	16.800	51.870	2441.72	96.12	49.90	217.80	40°22'35.149"N	104°24'28.010"W	1.16	
2559.00	16.870	50.320	2526.91	116.28	66.09	237.85	40°22'35.309"N	104°24'27.751"W	0.51	
2648.00	17.000	38.690	2612.07	138.18	84.50	255.93	40°22'35.490"N	104°24'27.518"W	3.80	
2827.00	16.770	46.600	2783.38	183.09	122.67	291.06	40°22'35.868"N	104°24'27.064"W	1.29	



# Actual Wellpath Report

NORTH PLATTE O24-K21-23HNB AWP

Page 3 of 8



## REFERENCE WELLPATH IDENTIFICATION

Operator	BONANZA CREEK OIL COMPANY	Slot	SLOT#16 NORTH PLATTE O24-K21-23HNB (436'FNL & 1081'FWL, SEC.26)
Area	COLORADO	Well	NORTH PLATTE O24-K21-23HNB
Field	WELD COUNTY	Wellbore	NORTH PLATTE O24-K21-23HNB AWB
Facility	SEC.26-T5N-R63W		

## WELLPATH DATA (124 stations)

MD [ft]	Inclination [°]	Azimuth [°]	TVD [ft]	Vert Sect [ft]	North [ft]	East [ft]	Latitude	Longitude	DLS [°/100ft]	Comments
2917.00	16.890	60.220	2869.56	202.66	138.09	311.85	40°22'36.020"N	104°24'26.795"W	4.37	
3006.00	17.280	69.990	2954.65	218.50	149.04	335.49	40°22'36.128"N	104°24'26.490"W	3.25	
3096.00	16.780	85.080	3040.75	229.61	154.73	361.01	40°22'36.184"N	104°24'26.160"W	4.93	
3185.00	17.740	95.530	3125.76	235.13	154.52	387.31	40°22'36.182"N	104°24'25.820"W	3.64	
3275.00	17.210	101.170	3211.61	237.14	150.62	414.02	40°22'36.144"N	104°24'25.475"W	1.97	
3454.00	18.030	91.170	3382.25	243.27	144.92	467.71	40°22'36.088"N	104°24'24.781"W	1.75	
3543.00	18.620	76.820	3466.78	252.17	147.88	495.33	40°22'36.117"N	104°24'24.424"W	5.10	
3632.00	17.750	68.210	3551.35	266.00	156.16	521.77	40°22'36.199"N	104°24'24.083"W	3.17	
3722.00	17.890	70.550	3637.03	281.08	165.86	547.54	40°22'36.294"N	104°24'23.750"W	0.81	
3809.00	17.750	65.140	3719.86	296.22	175.88	572.18	40°22'36.393"N	104°24'23.432"W	1.91	
3898.00	17.650	61.970	3804.65	313.25	187.93	596.40	40°22'36.512"N	104°24'23.119"W	1.09	
3988.00	17.740	63.960	3890.40	330.69	200.36	620.76	40°22'36.635"N	104°24'22.804"W	0.68	
4076.00	17.450	66.350	3974.28	346.85	211.54	644.89	40°22'36.746"N	104°24'22.492"W	0.88	
4161.00	17.820	71.020	4055.29	361.19	220.88	668.87	40°22'36.838"N	104°24'22.182"W	1.72	
4249.00	17.800	68.510	4139.07	375.77	230.19	694.11	40°22'36.930"N	104°24'21.856"W	0.87	
4338.00	17.640	65.710	4223.85	391.48	240.72	719.06	40°22'37.034"N	104°24'21.534"W	0.97	
4428.00	17.630	72.030	4309.63	406.59	250.53	744.46	40°22'37.131"N	104°24'21.205"W	2.13	
4517.00	17.750	73.610	4394.42	420.01	258.52	770.30	40°22'37.210"N	104°24'20.872"W	0.56	
4607.00	17.730	68.510	4480.15	434.33	267.41	796.21	40°22'37.298"N	104°24'20.537"W	1.73	
4697.00	17.560	67.070	4565.91	449.89	277.72	821.47	40°22'37.400"N	104°24'20.210"W	0.52	
4784.00	17.710	67.260	4648.83	465.16	287.95	845.76	40°22'37.501"N	104°24'19.897"W	0.18	
4872.00	17.850	61.890	4732.63	481.69	299.48	870.00	40°22'37.615"N	104°24'19.583"W	1.87	
4960.00	17.170	57.340	4816.55	499.70	312.84	892.83	40°22'37.747"N	104°24'19.288"W	1.74	
5048.00	16.670	58.940	4900.75	517.64	326.37	914.58	40°22'37.880"N	104°24'19.007"W	0.78	
5136.00	15.360	66.310	4985.34	533.24	337.56	936.07	40°22'37.991"N	104°24'18.730"W	2.75	
5225.00	16.950	71.590	5070.82	546.89	346.40	959.17	40°22'38.078"N	104°24'18.431"W	2.43	
5313.00	16.960	72.480	5155.00	559.93	354.31	983.58	40°22'38.156"N	104°24'18.116"W	0.30	
5402.00	16.510	77.670	5240.23	571.77	360.92	1008.32	40°22'38.222"N	104°24'17.796"W	1.75	
5490.00	16.920	78.630	5324.52	582.23	366.11	1033.09	40°22'38.273"N	104°24'17.476"W	0.56	
5577.00	16.900	79.040	5407.75	592.42	371.01	1057.92	40°22'38.322"N	104°24'17.155"W	0.14	



# Actual Wellpath Report

NORTH PLATTE O24-K21-23HNB AWP

Page 4 of 8



## REFERENCE WELLPATH IDENTIFICATION

Operator	BONANZA CREEK OIL COMPANY	Slot	SLOT#16 NORTH PLATTE O24-K21-23HNB (436'FNL & 1081'FWL, SEC.26)
Area	COLORADO	Well	NORTH PLATTE O24-K21-23HNB
Field	WELD COUNTY	Wellbore	NORTH PLATTE O24-K21-23HNB AWB
Facility	SEC.26-T5N-R63W		

## WELLPATH DATA (124 stations) † = interpolated/extrapolated station

MD [ft]	Inclination [°]	Azimuth [°]	TVD [ft]	Vert Sect [ft]	North [ft]	East [ft]	Latitude	Longitude	DLS [°/100ft]	Comments
5667.00	16.900	71.740	5493.88	604.35	377.60	1083.18	40°22'38.387"N	104°24'16.829"W	2.36	
5757.00	16.840	65.700	5580.01	618.88	387.07	1107.49	40°22'38.480"N	104°24'16.515"W	1.95	
5846.00	16.790	69.620	5665.21	633.60	396.85	1131.29	40°22'38.577"N	104°24'16.207"W	1.28	
5933.00	16.440	69.070	5748.58	647.24	405.62	1154.57	40°22'38.663"N	104°24'15.906"W	0.44	
6019.00	16.080	69.710	5831.14	660.42	414.10	1177.11	40°22'38.747"N	104°24'15.615"W	0.47	
6107.00	19.300	45.590	5915.08	679.25	428.52	1198.96	40°22'38.890"N	104°24'15.333"W	9.02	
6195.00	25.590	38.400	5996.38	708.59	453.63	1221.18	40°22'39.138"N	104°24'15.046"W	7.79	
6283.00	32.780	29.290	6073.20	748.58	489.36	1244.68	40°22'39.491"N	104°24'14.742"W	9.58	
6372.00	38.130	8.620	6145.93	799.29	537.75	1260.66	40°22'39.969"N	104°24'14.535"W	14.68	
6459.00	45.220	5.220	6210.88	856.79	595.13	1267.50	40°22'40.536"N	104°24'14.447"W	8.55	
6547.00	52.920	13.100	6268.54	923.02	660.58	1278.33	40°22'41.183"N	104°24'14.307"W	11.05	
6636.00	63.010	10.700	6315.70	998.36	734.32	1293.78	40°22'41.912"N	104°24'14.107"W	11.56	
6725.00	74.450	5.130	6347.95	1080.83	816.32	1305.02	40°22'42.722"N	104°24'13.962"W	14.11	
6813.00	82.190	2.900	6365.75	1165.98	902.21	1311.02	40°22'43.571"N	104°24'13.884"W	9.14	
6846.00†	83.941	2.485	6369.74	1198.25	934.93	1312.56	40°22'43.894"N	104°24'13.865"W	5.45	TOP OF PRODUCTION (SES, SEC.23-T05N-R63W, 508'FSL & 2393'FWL, SEC.23)
6901.00	86.860	1.800	6374.15	1252.16	989.71	1314.61	40°22'44.435"N	104°24'13.838"W	5.45	
6989.00	89.910	359.550	6376.63	1338.22	1077.65	1315.64	40°22'45.304"N	104°24'13.825"W	4.31	
7078.00	90.120	356.150	6376.61	1424.28	1166.58	1312.31	40°22'46.183"N	104°24'13.868"W	3.83	
7166.00	89.910	353.950	6376.58	1508.19	1254.25	1304.71	40°22'47.049"N	104°24'13.966"W	2.51	
7254.00	89.820	351.490	6376.79	1590.96	1341.53	1293.56	40°22'47.912"N	104°24'14.110"W	2.80	
7341.00	90.060	350.550	6376.88	1671.87	1427.46	1279.98	40°22'48.761"N	104°24'14.285"W	1.12	
7516.00	90.090	353.710	6376.65	1835.83	1600.79	1256.02	40°22'50.474"N	104°24'14.595"W	1.81	
7604.00	90.280	356.590	6376.37	1919.78	1688.47	1248.58	40°22'51.340"N	104°24'14.691"W	3.28	
7694.00	90.310	359.850	6375.90	2006.96	1778.41	1245.79	40°22'52.229"N	104°24'14.727"W	3.62	
7783.00	90.400	3.740	6375.35	2094.37	1867.35	1248.58	40°22'53.108"N	104°24'14.691"W	4.37	
7872.00	90.430	3.440	6374.71	2182.28	1956.17	1254.15	40°22'53.985"N	104°24'14.619"W	0.34	
7961.00	90.090	0.120	6374.30	2269.69	2045.11	1256.91	40°22'54.864"N	104°24'14.583"W	3.75	
8049.00	90.310	358.650	6374.00	2355.36	2133.11	1255.97	40°22'55.734"N	104°24'14.595"W	1.69	
8138.00	90.120	358.450	6373.66	2441.71	2222.08	1253.72	40°22'56.613"N	104°24'14.624"W	0.31	
8226.00	90.220	359.400	6373.40	2527.22	2310.06	1252.07	40°22'57.482"N	104°24'14.645"W	1.09	



# Actual Wellpath Report

NORTH PLATTE O24-K21-23HNB AWP

Page 5 of 8



## REFERENCE WELLPATH IDENTIFICATION

Operator	BONANZA CREEK OIL COMPANY	Slot	SLOT#16 NORTH PLATTE O24-K21-23HNB (436'FNL & 1081'FWL, SEC.26)
Area	COLORADO	Well	NORTH PLATTE O24-K21-23HNB
Field	WELD COUNTY	Wellbore	NORTH PLATTE O24-K21-23HNB AWB
Facility	SEC.26-T5N-R63W		

## WELLPATH DATA (124 stations)

MD [ft]	Inclination [°]	Azimuth [°]	TVD [ft]	Vert Sect [ft]	North [ft]	East [ft]	Latitude	Longitude	DLS [°/100ft]	Comments
8314.00	90.280	0.140	6373.02	2613.03	2398.06	1251.71	40°22'58.352"N	104°24'14.650"W	0.84	
8400.00	90.150	359.560	6372.70	2696.92	2484.06	1251.49	40°22'59.202"N	104°24'14.653"W	0.69	
8490.00	89.720	358.270	6372.80	2784.37	2574.04	1249.78	40°23'00.091"N	104°24'14.675"W	1.51	
8577.00	89.510	357.570	6373.38	2868.54	2660.98	1246.63	40°23'00.950"N	104°24'14.715"W	0.84	
8667.00	89.720	358.060	6373.99	2955.57	2750.91	1243.19	40°23'01.839"N	104°24'14.760"W	0.59	
8756.00	89.660	358.140	6374.47	3041.74	2839.86	1240.24	40°23'02.718"N	104°24'14.798"W	0.11	
8845.00	89.660	358.830	6375.00	3128.07	2928.83	1237.89	40°23'03.597"N	104°24'14.828"W	0.78	
8934.00	89.690	0.080	6375.50	3214.74	3017.82	1237.04	40°23'04.476"N	104°24'14.839"W	1.40	
9022.00	89.600	359.560	6376.05	3300.57	3105.82	1236.77	40°23'05.346"N	104°24'14.843"W	0.60	
9112.00	89.600	359.620	6376.67	3388.26	3195.81	1236.12	40°23'06.235"N	104°24'14.851"W	0.07	
9199.00	89.660	0.130	6377.24	3473.13	3282.81	1235.93	40°23'07.095"N	104°24'14.853"W	0.59	
9288.00	89.690	0.340	6377.74	3560.08	3371.81	1236.30	40°23'07.974"N	104°24'14.848"W	0.24	
9377.00	90.180	358.960	6377.84	3646.82	3460.80	1235.76	40°23'08.854"N	104°24'14.855"W	1.65	
9466.00	90.030	357.360	6377.68	3733.02	3549.75	1232.90	40°23'09.733"N	104°24'14.892"W	1.81	
9556.00	90.280	357.790	6377.44	3819.95	3639.67	1229.09	40°23'10.621"N	104°24'14.941"W	0.55	
9645.00	90.090	359.200	6377.15	3906.27	3728.64	1226.75	40°23'11.500"N	104°24'14.972"W	1.60	
9732.00	90.030	0.160	6377.06	3991.08	3815.64	1226.27	40°23'12.360"N	104°24'14.978"W	1.11	
9820.00	90.150	1.100	6376.92	4077.17	3903.63	1227.23	40°23'13.230"N	104°24'14.965"W	1.08	
9908.00	90.740	0.090	6376.24	4163.25	3991.62	1228.15	40°23'14.099"N	104°24'14.953"W	1.33	
9994.00	91.880	359.950	6374.27	4247.17	4077.60	1228.18	40°23'14.949"N	104°24'14.953"W	1.34	
10083.00	91.600	358.180	6371.57	4333.67	4166.54	1226.73	40°23'15.828"N	104°24'14.972"W	2.01	
10172.00	90.280	355.580	6370.11	4419.33	4255.39	1221.88	40°23'16.706"N	104°24'15.034"W	3.28	
10261.00	90.060	353.040	6369.84	4503.84	4343.94	1213.06	40°23'17.581"N	104°24'15.148"W	2.86	
10349.00	90.150	352.350	6369.68	4586.59	4431.23	1201.87	40°23'18.443"N	104°24'15.293"W	0.79	
10436.00	89.940	352.390	6369.61	4668.24	4517.46	1190.32	40°23'19.295"N	104°24'15.442"W	0.25	
10525.00	90.180	351.590	6369.52	4751.56	4605.59	1177.92	40°23'20.166"N	104°24'15.602"W	0.94	
10613.00	90.060	353.850	6369.34	4834.32	4692.87	1166.77	40°23'21.029"N	104°24'15.746"W	2.57	
10702.00	90.090	356.780	6369.22	4919.31	4781.57	1159.50	40°23'21.905"N	104°24'15.840"W	3.29	
10790.00	90.030	358.810	6369.13	5004.39	4869.50	1156.11	40°23'22.774"N	104°24'15.884"W	2.31	
10878.00	89.940	0.890	6369.15	5090.22	4957.49	1155.88	40°23'23.643"N	104°24'15.887"W	2.37	



# Actual Wellpath Report

NORTH PLATTE O24-K21-23HNB AWP

Page 6 of 8



REFERENCE WELLPATH IDENTIFICATION			
Operator	BONANZA CREEK OIL COMPANY	Slot	SLOT#16 NORTH PLATTE O24-K21-23HNB (436'FNL & 1081'FWL, SEC.26)
Area	COLORADO	Well	NORTH PLATTE O24-K21-23HNB
Field	WELD COUNTY	Wellbore	NORTH PLATTE O24-K21-23HNB AWB
Facility	SEC.26-T5N-R63W		

WELLPATH DATA (124 stations)										
MD [ft]	Inclination [°]	Azimuth [°]	TVD [ft]	Vert Sect [ft]	North [ft]	East [ft]	Latitude	Longitude	DLS [°/100ft]	Comments
10966.00	89.850	2.460	6369.31	5176.63	5045.45	1158.45	40°23'24.513"N	104°24'15.853"W	1.79	
11052.00	90.090	2.480	6369.36	5261.30	5131.37	1162.16	40°23'25.362"N	104°24'15.805"W	0.28	
11140.00	89.910	2.240	6369.36	5347.91	5219.30	1165.78	40°23'26.231"N	104°24'15.759"W	0.34	LAST BHGE MWD SURVEY
11169.00	89.910	2.240	6369.40	5376.43	5248.27	1166.92	40°23'26.517"N	104°24'15.744"W	0.00	PROJECTION TO BIT, 5.5"CASING/BHL (NENW, SEC.23-T05N-R63W, 496'FNL & 1857'FWL, SEC.23)

HOLE & CASING SECTIONS - Ref Wellbore: NORTH PLATTE O24-K21-23HNB AWB      Ref Wellpath: NORTH PLATTE O24-K21-23HNB AWP									
String/Diameter	Start MD [ft]	End MD [ft]	Interval [ft]	Start TVD [ft]	End TVD [ft]	Start N/S [ft]	Start E/W [ft]	End N/S [ft]	End E/W [ft]
13.5in Open Hole	17.00	1678.00	1661.00	17.00	1676.37	0.00	0.00	1.64	31.10
9.625in Casing Surface	17.00	1680.00	1663.00	17.00	1678.35	0.00	0.00	1.70	31.38
8.5in Open Hole	1678.00	11169.00	9491.00	1676.37	6369.40	1.64	31.10	5248.27	1166.92



# Actual Wellpath Report

NORTH PLATTE 024-K21-23HNB AWP

Page 7 of 8



## REFERENCE WELLPATH IDENTIFICATION

Operator	BONANZA CREEK OIL COMPANY	Slot	SLOT#16 NORTH PLATTE 024-K21-23HNB (436'FNL & 1081'FWL, SEC.26)
Area	COLORADO	Well	NORTH PLATTE 024-K21-23HNB
Field	WELD COUNTY	Wellbore	NORTH PLATTE 024-K21-23HNB AWB
Facility	SEC.26-T5N-R63W		

## TARGETS

Name	TVD [ft]	North [ft]	East [ft]	Grid East [US ft]	Grid North [US ft]	Latitude	Longitude	Shape
SEC.23-T05N-R63W	-2.00	-60.04	-0.48	3304075.56	1381735.41	40°22'34.062"N	104°24'30.831"W	polygon
SEC.26-T05N-R63W	-2.00	-60.04	-0.48	3304075.56	1381735.41	40°22'34.062"N	104°24'30.831"W	polygon
NORTH PLATTE 024-K21-23HNB BHL REV-2 (470'FNL & 2332'FWL, SEC.23)	6379.00	5261.95	1173.64	3305184.03	1387071.21	40°23'26.652"N	104°24'15.657"W	point
NORTH PLATTE 024-K21-23HNB TARGET REV-2 (589'FSL & 2387'FWL, SEC.23)	6379.00	1015.10	1302.69	3305365.34	1382826.46	40°22'44.686"N	104°24'13.992"W	point
NORTH PLATTE 024-K21-23HNB BHL REV-3 (470'FNL & 2332'FWL, SEC.23)	6382.00	5261.95	1173.64	3305184.03	1387071.21	40°23'26.652"N	104°24'15.657"W	point
NORTH PLATTE 024-K21-23HNB TARGET REV-3 (589'FSL & 2387'FWL, SEC.23)	6382.00	1015.10	1302.69	3305365.34	1382826.46	40°22'44.686"N	104°24'13.992"W	point
SEC.23-T05N-R63W 460' SETBACK	6556.00	-60.04	-0.48	3304075.56	1381735.41	40°22'34.062"N	104°24'30.831"W	polygon
SEC.26-T05N-R63W 460' SETBACK	6556.00	-60.04	-0.48	3304075.56	1381735.41	40°22'34.062"N	104°24'30.831"W	polygon

## WELLPATH COMPOSITION - Ref Wellbore: NORTH PLATTE 024-K21-23HNB AWB Ref Wellpath: NORTH PLATTE 024-K21-23HNB AWP

Start MD [ft]	End MD [ft]	Positional Uncertainty Model	Log Name/Comment	Wellbore
17.00	1613.00	Custom BHI NaviTrak (Standard Rotating) (Rockies 0.03Gt model)	BHI MWD NAVITRAK +SR+ROCKIES <121-1613>	NORTH PLATTE 024-K21-23HNB AWB
1613.00	11140.00	Custom BHI AutoTrak Curve (Axial Corr, Short spacing) (Rockies 0.03Gt model)	BHI ATCURVE +AC+SS+ROCKIES <1755-11140>	NORTH PLATTE 024-K21-23HNB AWB
11140.00	11169.00	Blind Drilling (std)	Projection to bit	NORTH PLATTE 024-K21-23HNB AWB





# Actual Wellpath Report

NORTH PLATTE O24-K21-23HNB AWP

Page 8 of 8



REFERENCE WELLPATH IDENTIFICATION			
Operator	BONANZA CREEK OIL COMPANY	Slot	SLOT#16 NORTH PLATTE O24-K21-23HNB (436'FNL & 1081'FWL, SEC.26)
Area	COLORADO	Well	NORTH PLATTE O24-K21-23HNB
Field	WELD COUNTY	Wellbore	NORTH PLATTE O24-K21-23HNB AWB
Facility	SEC.26-T5N-R63W		

WELLPATH COMMENTS				
MD [ft]	Inclination [°]	Azimuth [°]	TVD [ft]	Comment
121.00	0.390	184.690	121.00	FIRST BHGE MWD SURVEY
6846.00	83.941	2.485	6369.74	TOP OF PRODUCTION (SESW, SEC.23-T05N-R63W, 508'FSL & 2393'FWL, SEC.23)
11140.00	89.910	2.240	6369.36	LAST BHGE MWD SURVEY
11169.00	89.910	2.240	6369.40	PROJECTION TO BIT, 5.5"CASING/BHL (NENW, SEC.23-T05N-R63W, 496'FNL & 1857'FWL, SEC.23)