

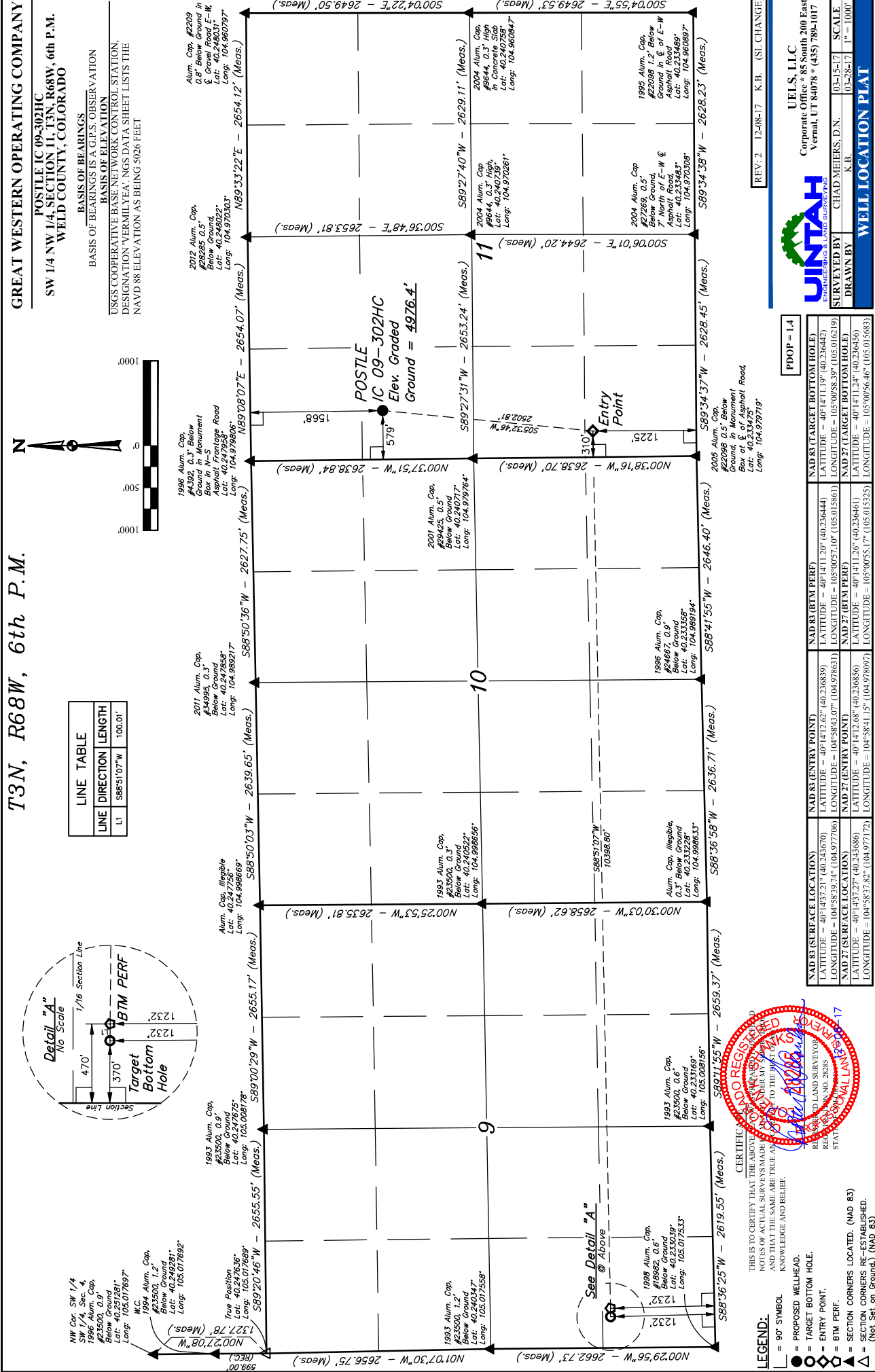
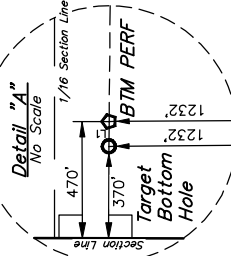
T3N, R68W, 6th P.M.

GREAT WESTERN OPERATING COMPANY

POSTLE IC 09-302HC
SW 1/4 NW 1/4, SECTION 11, T3N, R68W, 6th P.M.
WELD COUNTY, COLORADO

BASIS OF BEARINGS
BASIS OF ELEVATION
USGS COOPERATIVE BASE NETWORK CONTROL STATION,
DESIGNATION VERMILYEA, NGDS DATA SHEET LISTS THE
NAVD 88 ELEVATION AS BEING 5026 FEET

LINE TABLE	
LINE	DIRECTION LENGTH
L1	S88°51'07"W 100.01'



REV: 2 T208-17 K.B. (SL CHANGE)

POOP = 1.4

JINTAH
ENGINEERING & LAND SURVEYING

SURVEYED BY CHAD MEIERS, D.N.
DRAWN BY K.B.

UELS, LLC
Corporate Office * 85 South 200 East
Vernal, UT 84078 * (435) 789-1017

	SCALE 03-28-17 1" = 1000'
SURVEYED BY	CHAD MEIERS, D.N.
DRAWN BY	K.B.

	SCALE 03-28-17 1" = 1000'
SURVEYED BY	CHAD MEIERS, D.N.
DRAWN BY	K.B.

WELL LOCATION PLAT

	SCALE 03-28-17 1" = 1000'
SURVEYED BY	CHAD MEIERS, D.N.
DRAWN BY	K.B.

LEGEND:

- 90° SYMBOL
- PROPOSED WELL-HEAD.
- TARGET BOTTOM HOLE.
- BTM PERF.
- SECTION CORNERS LOCATED. (NAD 83)
- SECTION CORNERS RE-ESTABLISHED. (Not Set on Ground). (NAD 83)

CERTIFICATE OF RECORDING
THIS IS TO CERTIFY THAT THE ABOVE SURVEY WAS MADE IN ACCORDANCE WITH THE REQUIREMENTS OF THE COLORADO SURVEYING ACT, AND THAT THE SAME ARE TRUE AND CORRECT TO THE BEST OF MY KNOWLEDGE AND BELIEF.

RECORDED LAND SURVEYOR
REGISTRATION NO. 2835
STATE OF COLORADO
JAN 13 2017