

T3N, R68W, 6th P.M.

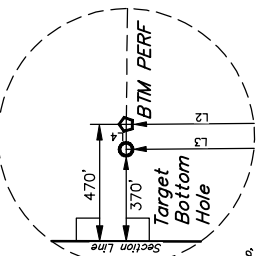
GREAT WESTERN OPERATING COMPANY
 POSTLE IC 09-379HC
 SW 1/4 NW 1/4 SECTION 11, T3N, R68W, 6th P.M.
 WELD COUNTY, COLORADO

UNITED STATES COOPERATIVE BASIS NETWORK CONTROL STATION
 DESIGNATION VERMILYEA TINGS DATA SHEET LISTS THE
 NAVD 88 ELEVATION AS BEING 5026 FEET

LINE TABLE

LINE	DIRECTION	LENGTH
L1	N00°25'23"W	475.32'
L2	N01°23'35"W	478.32'
L3	N01°23'35"W	478.71'
L4	S88°49'46"W	100.01'

Detail "A"
 No Scale



NW Cor. SW 1/4
 1998 Alum. Cap.
 #23500, 0.9'
 Below Ground
 Lat: 40.251281'
 Long: 105.017897'
 1994 Alum. Cap.
 #23500, 1.2'
 Below Ground
 Lat: 40.249291'
 Long: 105.017892'

True Position
 1998 Alum. Cap.
 #23500, 0.9'
 Below Ground
 Lat: 40.247836'
 Long: 105.017899'
 1993 Alum. Cap.
 #23500, 0.9'
 Below Ground
 Lat: 40.247556'
 Long: 104.998668'

1993 Alum. Cap.
 #23500, 0.9'
 Below Ground
 Lat: 40.247556'
 Long: 104.998668'

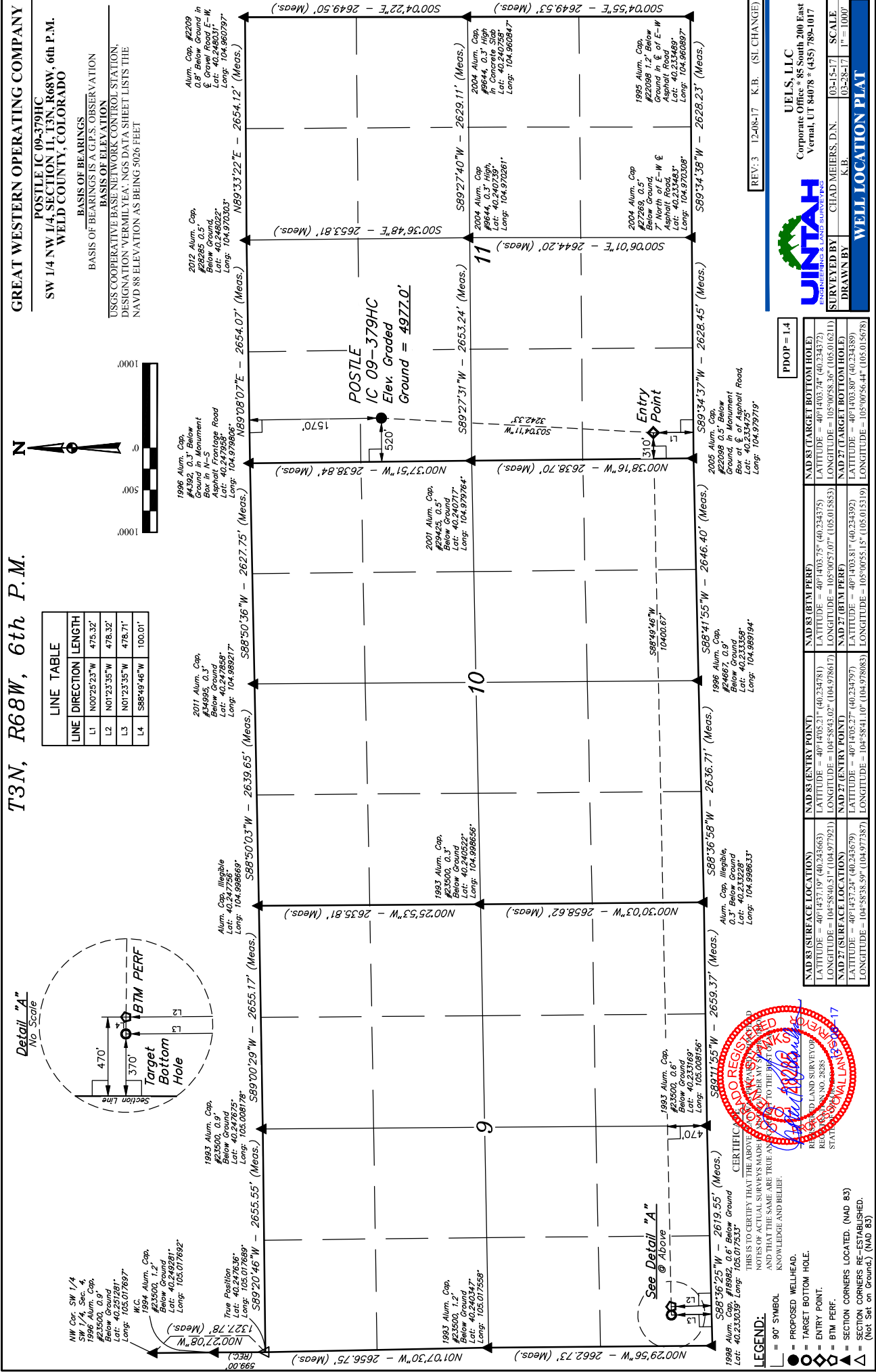
2011 Alum. Cap.
 #34995, 0.3'
 Below Ground
 Lat: 40.247556'
 Long: 104.998921'

1998 Alum. Cap.
 0.3' Below
 Ground Monument
 Box in N-S
 Asphalt Frontage Road
 Lat: 40.247556'
 Long: 104.979898'

2012 Alum. Cap.
 #22689, 0.5'
 Below Ground
 Lat: 40.249022'
 Long: 104.970303'

Alum. Cap. #2209
 0.8' Below Ground in
 § Gravel Road E-W
 Lat: 40.248031'
 Long: 104.960797'

UNITED STATES COOPERATIVE BASIS NETWORK CONTROL STATION
 DESIGNATION VERMILYEA TINGS DATA SHEET LISTS THE
 NAVD 88 ELEVATION AS BEING 5026 FEET



REV:3 12-08-17 K.B. (SI CHANGE)

JINTAH
 ENGINEERING & LAND SURVEYING

UELS, LLC
 Corporate Office * 85 South 200 East
 Vernal, UT 84078 * (435) 789-1017

SURVEYED BY CHAD MEIERS, D.N.
 DRAWN BY K.B.

03-15-17 SCALE
 03-28-17 1" = 1000'

WELL LOCATION PLAT

PDOP = 1.4

	NAD 83 (TARGET BOTTOM HOLE)	NAD 83 (BTM PERF)	NAD 83 (ENTRY POINT)	NAD 83 (SURFACE LOCATION)
LATITUDE =	40°14'03.74" (40.234372)	40°14'03.75" (40.234375)	40°14'05.21" (40.234781)	40°14'37.19" (40.235665)
LONGITUDE =	105°00'58.36" (105.016211)	105°00'57.07" (105.015853)	104°58'43.02" (104.978617)	104°58'40.51" (104.977921)
LATITUDE =	40°14'03.80" (40.234389)	40°14'03.81" (40.234392)	40°14'05.27" (40.234792)	40°14'37.24" (40.235679)
LONGITUDE =	105°00'56.44" (105.015878)	105°00'55.18" (105.015191)	104°58'41.10" (104.978083)	104°58'38.39" (104.977387)

CERTIFIED RECORD SURVEY
 THIS IS TO CERTIFY THAT THE ABOVE
 NOTES OF ACTUAL SURVEYS MADE
 AND THAT THE SAME ARE TRUE AT
 KNOWLEDGE AND BELIEF.

REGISTERED LAND SURVEYOR
 REG. NO. 2838
 STATE OF COLORADO
 WALL LAMSON, JR.

LEGEND:

- 90° SYMBOL
- PROPOSED WELL HEAD.
- TARGET BOTTOM HOLE.
- ENTRY POINT.
- BTM PERF.
- SECTION CORNERS LOCATED. (NAD 83)
- SECTION CORNERS RE-ESTABLISHED. (NAD 83)
- (Not Sh. on Ground). (NAD 83)