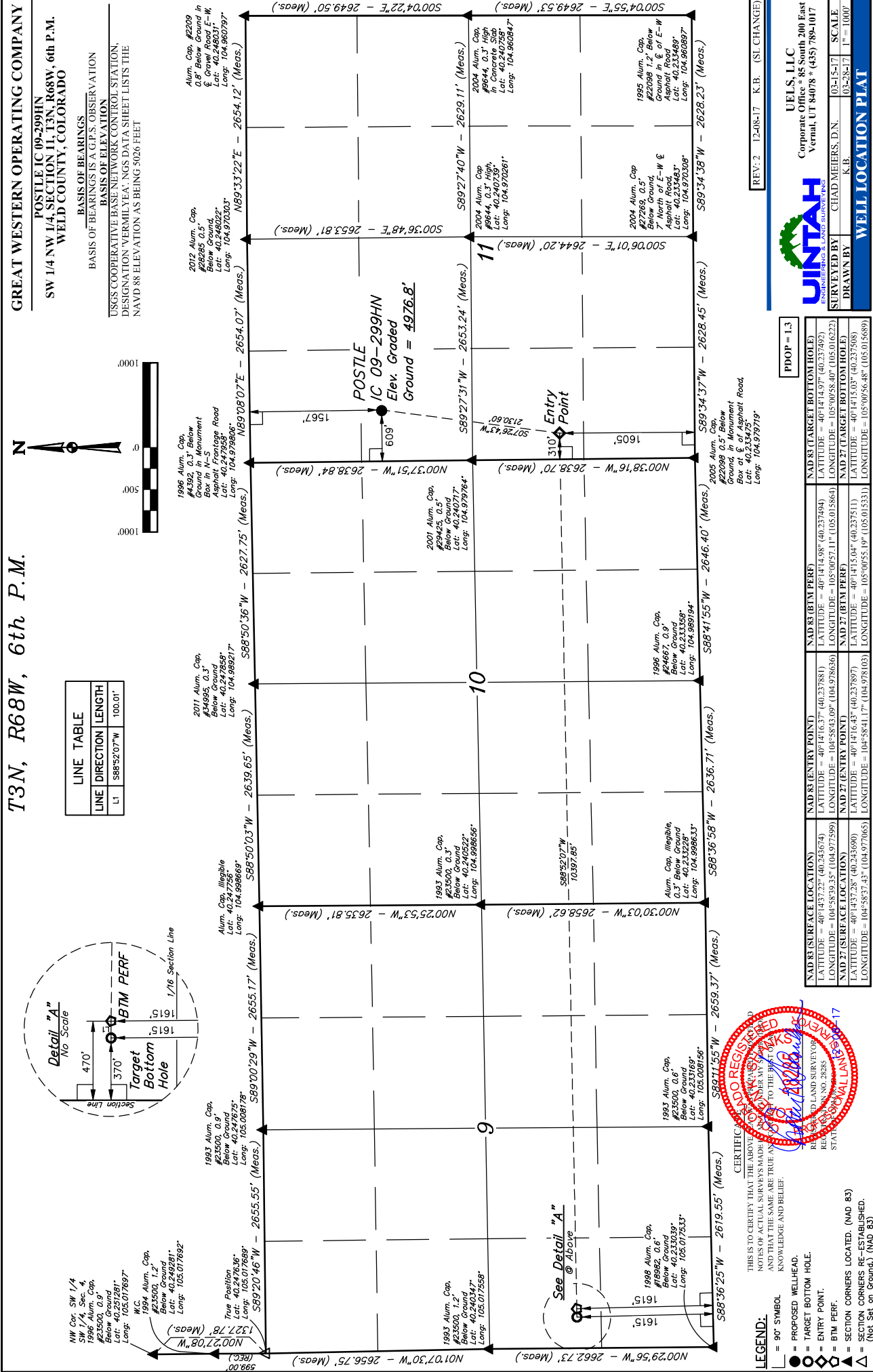
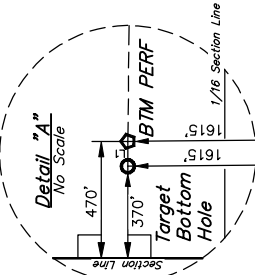


GREAT WESTERN OPERATING COMPANY

LINE TABLE		
LINE	DIRECTION	LENGTH
L1	S88°52'07"W	100.01'



REV: 2 12-08-17 K.B. (SL CHANGE)


UINTEAH
 ENGINEERING & LAND SURVEYING
 UELS, LLC
 Corporate Office • 85 South 200 East
 Vernal, UT 84078 • (435) 789-1017
 SURVEYED BY CHAD MEIERS, D.N.
 DRAWN BY K.B.
 03-15-17 SCALE
 03-28-17 1" = 1000'
WELL LOCATION PLAT

13

[illegible]

CERTIFICATE OF REGISTRATION
 THE ABOVE NAMED PARTY HAS BEEN
 FOUND TO BE A TRUE AND FAITHFUL
 REPRESENTATIVE OF THE BEST OF
 THE LAND SURVEYING PROFESSION
 IN THE STATE OF ALABAMA
 REGISTERED LAND SURVEYOR
 REGISTRATION NO. 28285
 STATE OF ALABAMA
 17

LEGEND:

—	= 90° SYMBOL
●	= PROPOSED WELLHEAD.
○	= TARGET BOTTOM HOLE.
◇	= ENTRY POINT.
◆	= BTM PERF.
▲	= SECTION CORNERS LOCATED. (NAD 83)
△	= SECTION CORNERS RE-ESTABLISHED. (Not Set on Ground.) (NAD 83)