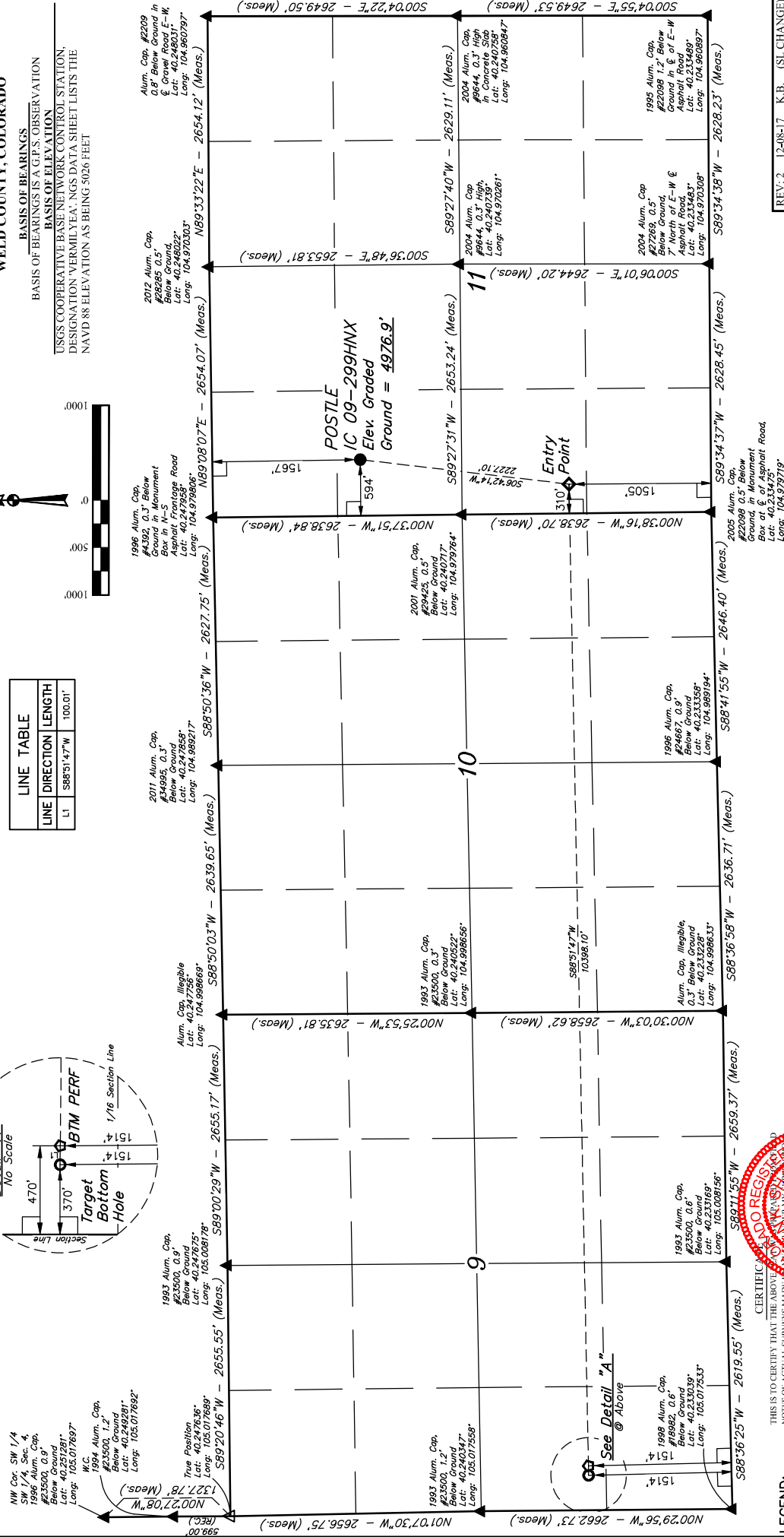
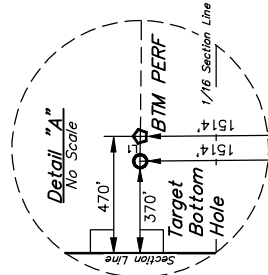


GREAT WESTERN OPERATING COMPANY

POSTLE IC 09-299HNX
SW 1/4 NW 1/4, SECTION 11, T3N, R68W, 6th P.M.
WELD COUNTY, COLORADO








BASIS OF BEARINGS
BASIS OF BEARINGS IS A G.P.S. OBSERVATION
BASIS OF ELEVATION
USGS COOPERATIVE BASE NETWORK CONTROL STATION,
DESIGNATION 'VERMILYEA', NGDS DATA SHEET LISTS THE
NAVD 88 ELEVATION AS BEING 5026 FEET

LINE TABLE		
LINE	DIRECTION	LENGTH
L1	S88°51'47"W	100.01'



CERTIFICATE OF REGISTRATION
 THE ABOVE-DESCRIBED PROPERTY IS REGISTERED UNDER MY SURVEYOR'S
 STATEMENT OF TRUTH AND ACCURACY
 DATE: Jan 48 2008
 REGISTERED LAND SURVEYOR
 REGISTRATION NO. 28285
 STATE OF CALIFORNIA

LEGEND:

- | | | |
|---|--|----------------------|
|  | = 90° SYMBOL | AND THAT THE SAME |
| | | KNOWLEDGE AND BELIEF |
|  | = PROPOSED WELLHEAD. | |
|  | = TARGET BOTTOM HOLE. | |
|  | = ENTRY POINT. | |
|  | = BTM PERF. | |
|  | = SECTION CORNERS LOCATED. (NAD 83) | |
|  | = SECTION CORNERS RE-ESTABLISHED.
(Not Set on Ground.) (NAD 83) | |

PDOP = 1.4

WELSH



UELS, LLC
Corporate Office * 85 South 200 East
Vernal, UT 84078 * (435) 789-1017

ENGINEERING & LAND SURVEYING	
SURVEYED BY	CHAD MEIERS, D.N.
DRAWN BY	K.B.
	03-15-17
	03-28-17
	SCALE
	1" = 1000'

NAD 83 (SURFACE LOCATION)		NAD 83 (ENTRY POINT)		NAD 83 (BTM PERF)		NAD 83 (TARGET BOTTOM HOLE)	
LATITUDE = 40°43'27.28"	(40.234672)	LATITUDE = 40°43'15.38"	(40.237606)	LATITUDE = 40°43'13.99"	(40.237219)	LATITUDE = 40°43'19.97"	(40.237214)
LONGITUDE = 105°58'39.45"	(105.977652)	LONGITUDE = 105°58'43.08"	(105.978633)	LONGITUDE = 105°50'57.11"	(105.0515864)	LONGITUDE = 105°50'48.39"	(105.0506222)
NAD 27 (SURFACE LOCATION)		NAD 27 (ENTRY POINT)		NAD 27 (BTM PERF)		NAD 27 (TARGET BOTTOM HOLE)	
LATITUDE = 40°43'27.28"	(40.234688)	LATITUDE = 40°43'15.44"	(40.237622)	LATITUDE = 40°43'14.04"	(40.2375238)	LATITUDE = 40°43'14.03"	(40.237231)
LONGITUDE = 104°58'37.63"	(104.977119)	LONGITUDE = 104°58'41.16"	(104.9781006)	LONGITUDE = 105°00'55.18"	(105.015328)	LONGITUDE = 105°00'56.47"	(105.015686)