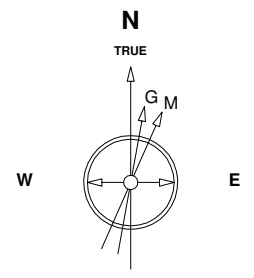


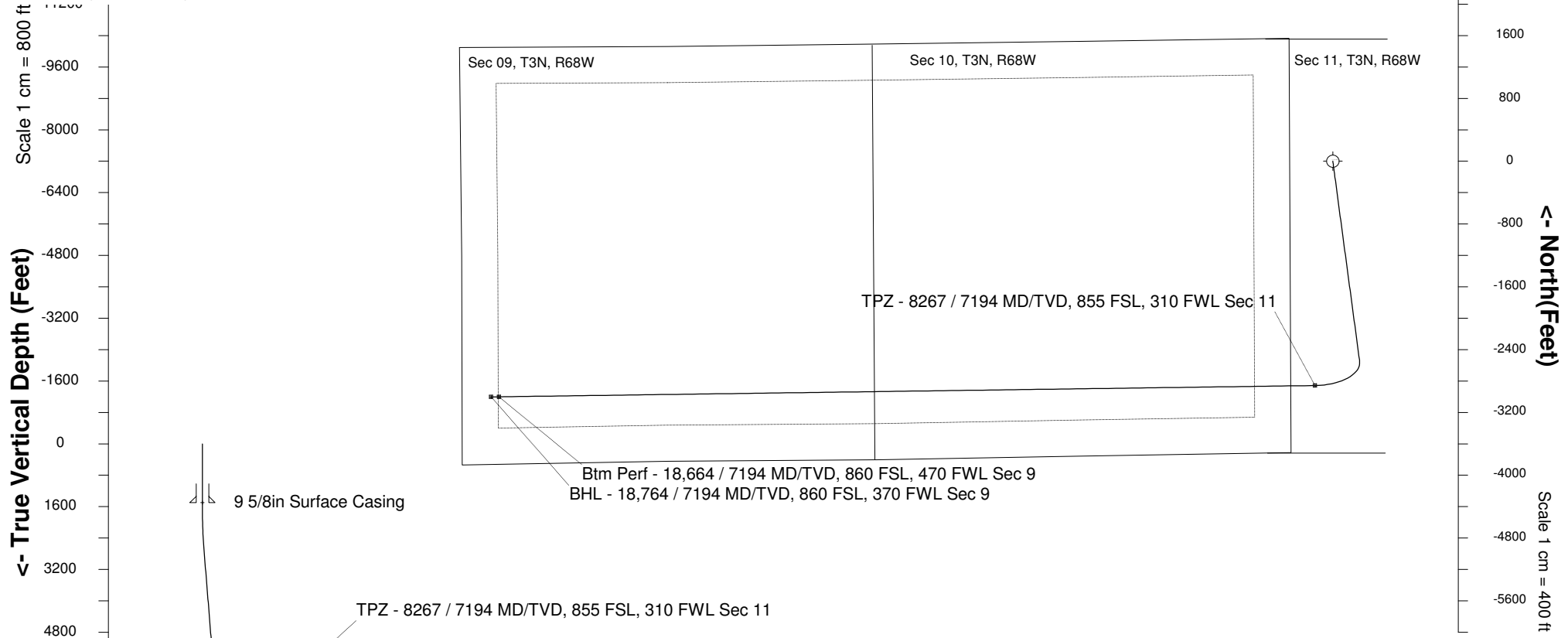
Great Western Operating Company, LLC

Created by admin
Date plotted 18-Dec-2017
Plot reference is Postle IC 09-342HN (PWB).
Ref wellpath is Postle IC 09-342HN (PWP#1).
Coordinates are in Feet reference S11 - Postle IC 09-342HN.
True Vertical Depths are reference Rig Datum.
Measured Depths are reference Rig Datum.
Rig Datum: Planned Datum #1
Rig Datum to Mean Sea Level: 4996.90 ft.
Plot North is aligned to TRUE North.

Location Colorado **Slot** S11 - Postle IC 09-342HN
Field Wattenburg **Well** Postle IC 09-342HN
Installation Postle West **Wellbore** Postle IC 09-342HN (PWB)



7-Aug-2014
IGRF Model [1900.0-2020.0] Dip: 66.77 deg Field: 52617.4 nT
Lat: N40 14 38.2488 Long: W104 58 42.6288 Elev: 4976.90 ft
Magnetic North is 8.62 deg East of TRUE North
To correct azimuth from Magnetic to TRUE add 8.62 deg



WELL PROFILE DATA								
Point	MD	Inc	Azi	TVD	North	East	deg/100ft	V. Sect
Tie on	0.00	0.00	0.00	0.00	S 0.00	W 0.00		-0.00
KOP	1703.00	0.00	172.36	1703.00	S 0.00	W 0.00	0.00	-0.00
End of Build	2702.98	30.00	172.36	2657.92	S 253.59	E 34.03	9.84	35.61
End of Hold	7332.56	30.00	172.36	6667.27	S 2547.79	E 341.85	0.00	357.73
Target TPZ - ...Sec 11	8266.76	90.00	269.21	7194.00	S 2857.58	W 225.87	32.81	987.95
Target Btm Pe... Sec 9	18664.01	90.00	269.21	7194.00	S 3001.03	W 10622.13	0.00	11037.89
End of Turn	18665.48	90.00	269.40	7194.00	S 3001.04	W 10623.60	42.65	11039.32
T.D. & Target BHL...c 9	18764.24	90.00	269.40	7194.00	S 3002.08	W 10722.36	0.00	11134.70

