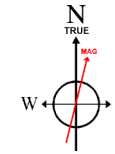


BONANZA CREEK OIL COMPANY

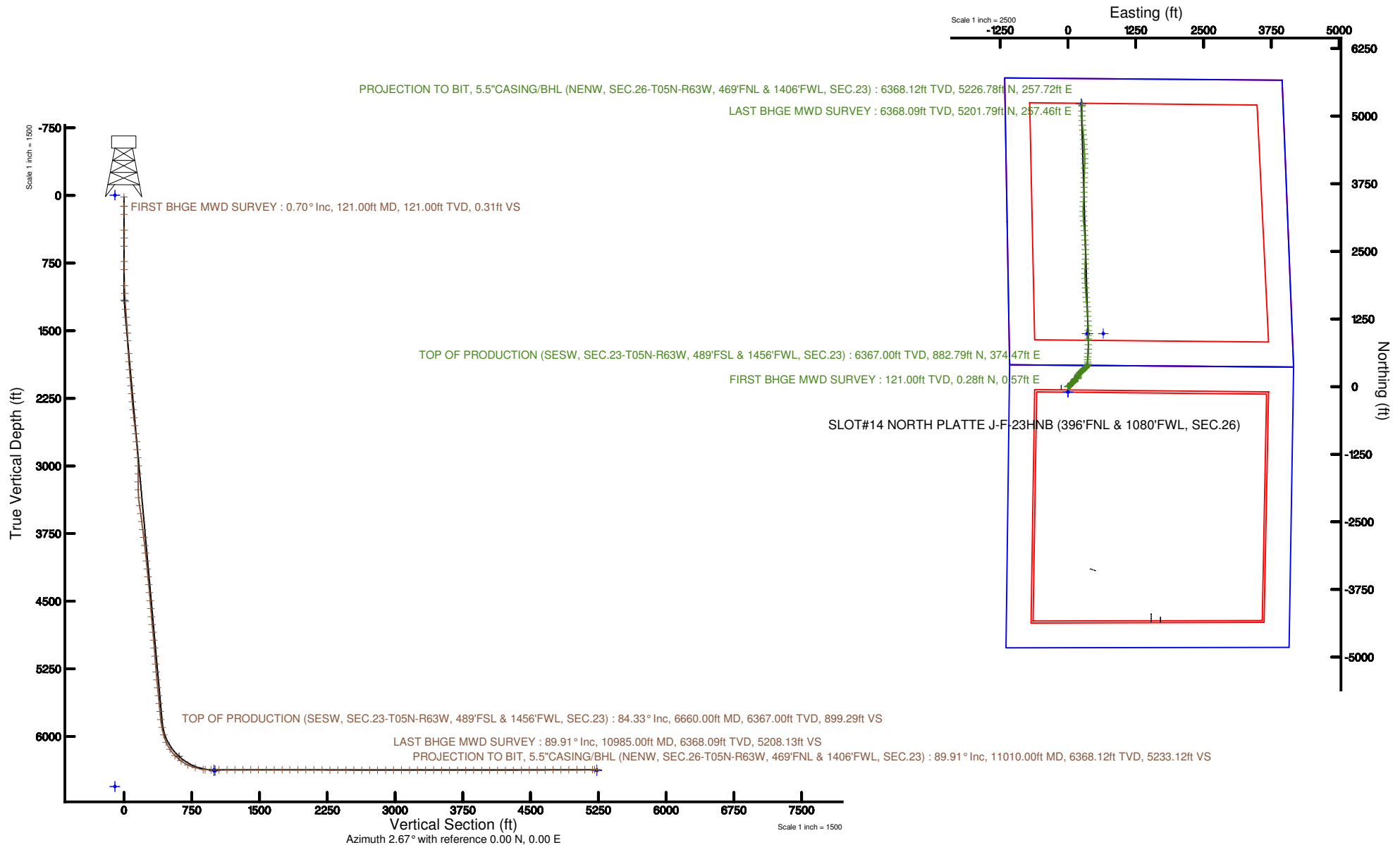
Location: COLORADO Slot: SLOT#14 NORTH PLATTE J-F-23HNB (396°FNL & 1080°FWL, SEC.26)
Field: WELD COUNTY Well: NORTH PLATTE J-F-23HNB
Facility: SEC.26-T5N-R63W Wellbore: NORTH PLATTE J-F-23HNB PWB

Plot reference wellbore is NORTH PLATTE J-F-23HNB PWB (REV.0.1)	Grid System: NAD83 / Lambert Colorado SP, Northern Zone (2011, US feet)
True vertical depths are referenced to XTREME 19 (4507'GL + 17'NS) (PWB)	True Wellbore was transformed from a different geoidic datum
Measured depths are referenced to XTREME 19 (4507'GL + 17'NS) (PWB)	North Reference: True North
XTREME 19 (4507'GL + 17'NS) (PWB) to Mean Sea Level: 4503 feet	Scale: True distance
Mean Sea Level to Mud line (in Slot) SLOT#14 NORTH PLATTE J-F-23HNB (2867'NL & 1080°FNL, SEC.26): 0 feet	Depths are in feet
Coordinates are in feet referenced to Slot	Created by: cartell on 2017-10-08
	Database: Denver



BGGM (1900.0 to 2019.0) Dip: 66.89° Field: 52383.6 nT
Magnetic North is 8.15 degrees East of True North (at 10/2/2017)

To correct azimuth from Magnetic to True add 8.15 degrees





Actual Wellpath Report

NORTH PLATTE J-F-23HNB AWP

Page 1 of 9



REFERENCE WELLPATH IDENTIFICATION

Operator	BONANZA CREEK OIL COMPANY	Slot	SLOT#14 NORTH PLATTE J-F-23HNB (396'FNL & 1080'FWL, SEC.26)
Area	COLORADO	Well	NORTH PLATTE J-F-23HNB
Field	WELD COUNTY	Wellbore	NORTH PLATTE J-F-23HNB AWB
Facility	SEC.26-T5N-R63W		

REPORT SETUP INFORMATION

Projection System	NAD83 / Lambert Colorado SP, Northern Zone (501), US feet	Software System	WellArchitect® 5.0
North Reference	True	User	Cantryat
Scale	0.999959	Report Generated	12/8/2017 at 2:58:28 PM
Convergence at slot	0.71° East	Database/Source file	Denver/NORTH_PLATTE_J-F-23HNB_AWP.xml

WELLPATH LOCATION

	Local coordinates		Grid coordinates		Geographic coordinates	
	North[ft]	East[ft]	Easting[US ft]	Northing[US ft]	Latitude	Longitude
Slot Location	59.38	125.05	3304075.14	1381835.45	40°22'35.051"N	104°24'30.820"W
Facility Reference Pt			3303950.84	1381774.54	40°22'34.464"N	104°24'32.436"W
Field Reference Pt			3224525.77	1254425.87	40°01'44.400"N	104°41'53.556"W

WELLPATH DATUM

Calculation method	Minimum curvature	XTREME 19 (4567'GL + 17'KB) (RKB) to Facility Vertical Datum	4583.00ft
Horizontal Reference Pt	Slot	XTREME 19 (4567'GL + 17'KB) (RKB) to Mean Sea Level	4583.00ft
Vertical Reference Pt	XTREME 19 (4567'GL + 17'KB) (RKB)	XTREME 19 (4567'GL + 17'KB) (RKB) to Mud Line at Slot (SLOT#14 NORTH PLATTE J-F-23HNB (396'FNL & 1080'FWL, SEC.26))	4583.00ft
MD Reference Pt	XTREME 19 (4567'GL + 17'KB) (RKB)	Section Origin	N 0.00, E 0.00 ft
Field Vertical Reference	Mean Sea Level	Section Azimuth	2.67°



Actual Wellpath Report

NORTH PLATTE J-F-23HNB AWP

Page 2 of 9



REFERENCE WELLPATH IDENTIFICATION

Operator	BONANZA CREEK OIL COMPANY	Slot	SLOT#14 NORTH PLATTE J-F-23HNB (396'FNL & 1080'FWL, SEC.26)
Area	COLORADO	Well	NORTH PLATTE J-F-23HNB
Field	WELD COUNTY	Wellbore	NORTH PLATTE J-F-23HNB AWP
Facility	SEC.26-T5N-R63W		

WELLPATH DATA (125 stations) † = interpolated/extrapolated station

MD [ft]	Inclination [°]	Azimuth [°]	TVD [ft]	Vert Sect [ft]	North [ft]	East [ft]	Latitude	Longitude	DLS [°/100ft]	Comments
0.00†	0.000	63.770	0.00	0.00	0.00	0.00	40°22'35.051"N	104°24'30.820"W	0.00	
17.00	0.000	63.770	17.00	0.00	0.00	0.00	40°22'35.051"N	104°24'30.820"W	0.00	
121.00	0.700	63.770	121.00	0.31	0.28	0.57	40°22'35.054"N	104°24'30.813"W	0.67	FIRST BHGE MWD SURVEY
209.00	0.680	53.500	208.99	0.90	0.83	1.47	40°22'35.059"N	104°24'30.801"W	0.14	
384.00	0.830	72.930	383.98	1.98	1.82	3.52	40°22'35.069"N	104°24'30.775"W	0.17	
473.00	1.120	80.560	472.96	2.38	2.15	4.99	40°22'35.072"N	104°24'30.756"W	0.36	
562.00	0.860	77.750	561.95	2.74	2.43	6.50	40°22'35.075"N	104°24'30.736"W	0.30	
734.00	1.190	85.080	733.92	3.30	2.86	9.54	40°22'35.079"N	104°24'30.697"W	0.21	
823.00	0.620	84.330	822.91	3.50	2.99	10.94	40°22'35.080"N	104°24'30.679"W	0.64	
1001.00	2.950	64.310	1000.81	5.81	5.07	16.03	40°22'35.101"N	104°24'30.613"W	1.34	
1087.00	4.690	51.280	1086.62	9.19	8.23	20.77	40°22'35.132"N	104°24'30.552"W	2.25	
1175.00	4.560	54.220	1174.33	13.74	12.52	26.41	40°22'35.175"N	104°24'30.479"W	0.31	
1264.00	5.580	45.360	1262.99	19.12	17.63	32.36	40°22'35.225"N	104°24'30.402"W	1.44	
1353.00	5.560	45.320	1351.57	25.48	23.71	38.51	40°22'35.285"N	104°24'30.323"W	0.02	
1439.00	4.620	40.720	1437.23	31.27	29.26	43.73	40°22'35.340"N	104°24'30.255"W	1.19	
1527.00	3.680	34.290	1524.99	36.46	34.28	47.63	40°22'35.390"N	104°24'30.205"W	1.19	
1613.00	3.360	32.300	1610.83	41.00	38.69	50.53	40°22'35.433"N	104°24'30.167"W	0.40	
1757.00	5.430	49.530	1754.41	49.33	46.68	57.97	40°22'35.512"N	104°24'30.071"W	1.69	
1846.00	6.330	50.170	1842.94	55.53	52.56	64.94	40°22'35.570"N	104°24'29.981"W	1.01	
1936.00	6.570	50.360	1932.37	62.35	59.02	72.72	40°22'35.634"N	104°24'29.881"W	0.27	
2025.00	6.590	44.510	2020.78	69.58	65.91	80.22	40°22'35.702"N	104°24'29.784"W	0.75	
2115.00	6.490	41.540	2110.20	77.39	73.40	87.21	40°22'35.776"N	104°24'29.693"W	0.39	
2204.00	6.290	51.450	2198.65	84.52	80.20	94.36	40°22'35.843"N	104°24'29.601"W	1.26	
2294.00	6.530	40.400	2288.09	91.81	87.17	101.54	40°22'35.912"N	104°24'29.508"W	1.39	
2383.00	6.540	19.040	2376.52	100.68	95.82	106.47	40°22'35.998"N	104°24'29.445"W	2.72	
2472.00	6.360	9.760	2464.96	110.43	105.47	108.96	40°22'36.093"N	104°24'29.412"W	1.19	
2562.00	6.490	19.390	2554.40	120.25	115.18	111.49	40°22'36.189"N	104°24'29.380"W	1.20	
2651.00	6.500	25.920	2642.83	129.70	124.45	115.36	40°22'36.281"N	104°24'29.330"W	0.83	
2740.00	6.510	33.880	2731.26	138.64	133.17	120.38	40°22'36.367"N	104°24'29.265"W	1.01	
2829.00	6.430	47.440	2819.70	146.50	140.73	126.86	40°22'36.441"N	104°24'29.181"W	1.72	



Actual Wellpath Report

NORTH PLATTE J-F-23HNB AWP

Page 3 of 9



REFERENCE WELLPATH IDENTIFICATION

Operator	BONANZA CREEK OIL COMPANY	Slot	SLOT#14 NORTH PLATTE J-F-23HNB (396'FNL & 1080'FWL, SEC.26)
Area	COLORADO	Well	NORTH PLATTE J-F-23HNB
Field	WELD COUNTY	Wellbore	NORTH PLATTE J-F-23HNB AWB
Facility	SEC.26-T5N-R63W		

WELLPATH DATA (125 stations)

MD [ft]	Inclination [°]	Azimuth [°]	TVD [ft]	Vert Sect [ft]	North [ft]	East [ft]	Latitude	Longitude	DLS [°/100ft]	Comments
2918.00	6.480	60.620	2908.14	152.70	146.57	134.91	40°22'36.499"N	104°24'29.077"W	1.66	
3008.00	6.150	73.270	2997.60	157.00	150.45	143.95	40°22'36.537"N	104°24'28.960"W	1.59	
3097.00	6.370	96.410	3086.08	158.26	151.27	153.43	40°22'36.546"N	104°24'28.838"W	2.83	
3187.00	6.420	100.370	3175.52	157.26	149.81	163.34	40°22'36.531"N	104°24'28.710"W	0.49	
3276.00	6.780	82.780	3263.94	157.50	149.57	173.44	40°22'36.529"N	104°24'28.579"W	2.30	
3365.00	7.610	52.270	3352.27	162.22	153.84	183.32	40°22'36.571"N	104°24'28.452"W	4.34	
3454.00	9.090	3.420	3440.43	173.08	164.48	188.41	40°22'36.676"N	104°24'28.386"W	7.88	
3543.00	7.940	335.420	3528.48	185.58	177.09	186.27	40°22'36.801"N	104°24'28.414"W	4.78	
3633.00	7.720	341.690	3617.65	196.75	188.48	181.78	40°22'36.913"N	104°24'28.471"W	0.98	
3722.00	7.720	6.270	3705.86	208.30	200.10	180.56	40°22'37.028"N	104°24'28.487"W	3.68	
3809.00	7.630	26.370	3792.10	219.43	211.09	183.76	40°22'37.137"N	104°24'28.446"W	3.07	
3898.00	7.510	37.130	3880.33	229.63	221.02	189.90	40°22'37.235"N	104°24'28.367"W	1.60	
3986.00	7.430	39.910	3967.58	238.91	229.97	197.02	40°22'37.323"N	104°24'28.275"W	0.42	
4074.00	7.480	42.240	4054.84	247.85	238.57	204.52	40°22'37.408"N	104°24'28.178"W	0.35	
4162.00	7.530	41.310	4142.08	256.77	247.14	212.18	40°22'37.493"N	104°24'28.079"W	0.15	
4249.00	7.470	38.840	4228.34	265.79	255.83	219.49	40°22'37.579"N	104°24'27.984"W	0.38	
4337.00	7.360	42.190	4315.60	274.75	264.46	226.86	40°22'37.664"N	104°24'27.889"W	0.51	
4427.00	7.320	49.220	4404.87	283.14	272.48	235.07	40°22'37.743"N	104°24'27.783"W	1.00	
4516.00	7.300	51.340	4493.15	290.78	279.72	243.78	40°22'37.815"N	104°24'27.670"W	0.30	
4606.00	7.210	52.850	4582.42	298.17	286.70	252.75	40°22'37.884"N	104°24'27.555"W	0.23	
4695.00	6.840	48.530	4670.76	305.44	293.58	261.17	40°22'37.952"N	104°24'27.446"W	0.72	
4783.00	6.860	42.700	4758.13	313.11	300.91	268.66	40°22'38.024"N	104°24'27.349"W	0.79	
4870.00	6.880	41.150	4844.51	321.17	308.66	275.62	40°22'38.101"N	104°24'27.259"W	0.21	
4958.00	6.890	47.490	4931.87	329.04	316.19	282.98	40°22'38.175"N	104°24'27.164"W	0.86	
5047.00	7.040	53.680	5020.22	336.26	323.03	291.30	40°22'38.243"N	104°24'27.056"W	0.86	
5136.00	7.220	53.180	5108.53	343.25	329.61	300.18	40°22'38.308"N	104°24'26.942"W	0.21	
5225.00	7.150	56.040	5196.83	350.11	336.06	309.25	40°22'38.372"N	104°24'26.825"W	0.41	
5314.00	7.130	51.450	5285.14	357.06	342.59	318.16	40°22'38.436"N	104°24'26.709"W	0.64	
5402.00	7.070	47.920	5372.47	364.47	349.63	326.45	40°22'38.506"N	104°24'26.602"W	0.50	
5489.00	7.160	40.120	5458.80	372.54	357.36	333.92	40°22'38.582"N	104°24'26.506"W	1.11	



Actual Wellpath Report

NORTH PLATTE J-F-23HNB AWP

Page 4 of 9



REFERENCE WELLPATH IDENTIFICATION

Operator	BONANZA CREEK OIL COMPANY	Slot	SLOT#14 NORTH PLATTE J-F-23HNB (396'FNL & 1080'FWL, SEC.26)
Area	COLORADO	Well	NORTH PLATTE J-F-23HNB
Field	WELD COUNTY	Wellbore	NORTH PLATTE J-F-23HNB AWB
Facility	SEC.26-T5N-R63W		

WELLPATH DATA (125 stations) † = interpolated/extrapolated station

MD [ft]	Inclination [°]	Azimuth [°]	TVD [ft]	Vert Sect [ft]	North [ft]	East [ft]	Latitude	Longitude	DLS [°/100ft]	Comments
5578.00	6.870	33.920	5547.13	381.50	366.02	340.46	40°22'38.668"N	104°24'26.421"W	0.91	
5666.00	7.060	39.070	5634.48	390.35	374.59	346.81	40°22'38.752"N	104°24'26.339"W	0.74	
5755.00	6.780	37.630	5722.84	399.06	382.99	353.46	40°22'38.835"N	104°24'26.253"W	0.37	
5844.00	6.640	31.000	5811.23	407.89	391.56	359.32	40°22'38.920"N	104°24'26.177"W	0.88	
5933.00	12.060	17.040	5899.02	421.44	404.88	364.70	40°22'39.052"N	104°24'26.108"W	6.56	
6019.00	13.940	354.430	5982.87	440.41	423.79	366.33	40°22'39.239"N	104°24'26.087"W	6.26	
6105.00	23.970	349.120	6064.11	467.72	451.33	362.02	40°22'39.511"N	104°24'26.143"W	11.82	
6194.00	33.460	359.310	6142.12	509.91	493.74	358.30	40°22'39.930"N	104°24'26.191"W	11.96	
6283.00	43.400	6.330	6211.79	565.08	548.82	361.38	40°22'40.474"N	104°24'26.151"W	12.18	
6371.00	53.740	6.430	6269.94	630.83	614.30	368.71	40°22'41.121"N	104°24'26.056"W	11.75	
6460.00	65.040	0.730	6315.21	707.25	690.59	373.26	40°22'41.875"N	104°24'25.997"W	13.83	
6547.00	73.850	0.060	6345.72	788.56	771.97	373.81	40°22'42.679"N	104°24'25.990"W	10.15	
6636.00	82.190	0.520	6364.18	875.47	858.96	374.25	40°22'43.539"N	104°24'25.984"W	9.38	
6660.00†	84.328	0.512	6367.00	899.29	882.79	374.47	40°22'43.774"N	104°24'25.982"W	8.91	TOP OF PRODUCTION (SES, SEC.23-T05N-R63W, 489'FSL & 1456'FWL, SEC.23)
6724.00	90.030	0.490	6370.15	963.14	946.68	375.03	40°22'44.406"N	104°24'25.974"W	8.91	
6813.00	90.180	359.200	6369.98	1052.03	1035.68	374.78	40°22'45.285"N	104°24'25.978"W	1.46	
6902.00	90.000	357.920	6369.84	1140.80	1124.65	372.55	40°22'46.164"N	104°24'26.006"W	1.45	
6989.00	90.000	356.600	6369.84	1227.41	1211.55	368.39	40°22'47.023"N	104°24'26.060"W	1.52	
7078.00	90.030	356.720	6369.82	1315.92	1300.40	363.20	40°22'47.901"N	104°24'26.127"W	0.14	
7165.00	89.940	355.700	6369.84	1402.36	1387.21	357.45	40°22'48.759"N	104°24'26.201"W	1.18	
7252.00	90.030	354.890	6369.87	1488.64	1473.91	350.32	40°22'49.615"N	104°24'26.294"W	0.94	
7340.00	90.060	355.140	6369.80	1575.86	1561.58	342.67	40°22'50.482"N	104°24'26.392"W	0.29	
7428.00	90.120	355.980	6369.66	1663.18	1649.31	335.86	40°22'51.349"N	104°24'26.480"W	0.96	
7515.00	90.120	356.080	6369.48	1749.60	1736.10	329.83	40°22'52.206"N	104°24'26.558"W	0.11	
7602.00	89.690	356.350	6369.62	1836.04	1822.91	324.09	40°22'53.064"N	104°24'26.632"W	0.58	
7691.00	89.720	356.730	6370.08	1924.53	1911.75	318.72	40°22'53.942"N	104°24'26.702"W	0.43	
7780.00	89.880	358.290	6370.39	2013.17	2000.66	314.85	40°22'54.821"N	104°24'26.752"W	1.76	
7869.00	90.030	0.140	6370.46	2102.00	2089.65	313.63	40°22'55.700"N	104°24'26.768"W	2.09	
7959.00	89.570	1.410	6370.77	2191.95	2179.64	314.85	40°22'56.589"N	104°24'26.752"W	1.50	
8046.00	89.320	1.770	6371.62	2278.93	2266.60	317.27	40°22'57.449"N	104°24'26.721"W	0.50	



Actual Wellpath Report

NORTH PLATTE J-F-23HNB AWP

Page 5 of 9



REFERENCE WELLPATH IDENTIFICATION

Operator	BONANZA CREEK OIL COMPANY	Slot	SLOT#14 NORTH PLATTE J-F-23HNB (396'FNL & 1080'FWL, SEC.26)
Area	COLORADO	Well	NORTH PLATTE J-F-23HNB
Field	WELD COUNTY	Wellbore	NORTH PLATTE J-F-23HNB AWB
Facility	SEC.26-T5N-R63W		

WELLPATH DATA (125 stations)

MD [ft]	Inclination [°]	Azimuth [°]	TVD [ft]	Vert Sect [ft]	North [ft]	East [ft]	Latitude	Longitude	DLS [°/100ft]	Comments
8135.00	89.540	0.990	6372.50	2367.90	2355.57	319.41	40°22'58.328"N	104°24'26.693"W	0.91	
8224.00	89.420	359.920	6373.31	2456.83	2444.56	320.12	40°22'59.207"N	104°24'26.684"W	1.21	
8312.00	89.970	358.980	6373.78	2544.69	2532.56	319.27	40°23'00.077"N	104°24'26.695"W	1.24	
8400.00	90.030	358.090	6373.78	2632.46	2620.53	317.02	40°23'00.946"N	104°24'26.724"W	1.01	
8487.00	89.970	357.010	6373.78	2719.11	2707.45	313.30	40°23'01.805"N	104°24'26.772"W	1.24	
8575.00	89.970	356.660	6373.83	2806.65	2795.31	308.44	40°23'02.673"N	104°24'26.834"W	0.40	
8664.00	89.910	355.340	6373.92	2895.05	2884.09	302.24	40°23'03.550"N	104°24'26.915"W	1.48	
8753.00	90.060	355.050	6373.94	2983.29	2972.78	294.78	40°23'04.427"N	104°24'27.011"W	0.37	
8842.00	89.970	355.170	6373.92	3071.52	3061.46	287.19	40°23'05.303"N	104°24'27.109"W	0.17	
8932.00	90.090	356.880	6373.87	3160.91	3151.24	280.95	40°23'06.190"N	104°24'27.190"W	1.90	
9020.00	90.060	0.240	6373.76	3248.67	3239.20	278.74	40°23'07.059"N	104°24'27.218"W	3.82	
9109.00	89.850	2.690	6373.83	3337.64	3328.16	281.02	40°23'07.939"N	104°24'27.189"W	2.76	
9198.00	89.880	3.600	6374.04	3426.64	3417.02	285.90	40°23'08.817"N	104°24'27.126"W	1.02	
9286.00	89.910	2.770	6374.20	3514.64	3504.89	290.79	40°23'09.685"N	104°24'27.062"W	0.94	
9375.00	89.880	1.950	6374.36	3603.63	3593.81	294.46	40°23'10.564"N	104°24'27.015"W	0.92	
9464.00	90.000	0.690	6374.45	3692.61	3682.79	296.51	40°23'11.443"N	104°24'26.989"W	1.42	
9553.00	89.690	0.870	6374.69	3781.56	3771.78	297.72	40°23'12.322"N	104°24'26.973"W	0.40	
9642.00	89.880	1.870	6375.03	3870.53	3860.75	299.85	40°23'13.201"N	104°24'26.945"W	1.14	
9730.00	89.420	1.550	6375.57	3958.52	3948.71	302.47	40°23'14.071"N	104°24'26.911"W	0.64	
9818.00	90.310	1.770	6375.77	4046.50	4036.67	305.02	40°23'14.940"N	104°24'26.879"W	1.04	
9906.00	90.250	1.150	6375.34	4134.48	4124.64	307.26	40°23'15.809"N	104°24'26.850"W	0.71	
9993.00	90.310	359.650	6374.92	4221.41	4211.64	307.87	40°23'16.669"N	104°24'26.842"W	1.73	
10081.00	90.460	357.960	6374.33	4309.20	4299.61	306.03	40°23'17.538"N	104°24'26.865"W	1.93	
10170.00	90.680	355.990	6373.44	4397.76	4388.48	301.34	40°23'18.416"N	104°24'26.926"W	2.23	
10259.00	90.490	356.620	6372.53	4486.20	4477.29	295.60	40°23'19.294"N	104°24'27.000"W	0.74	
10348.00	90.340	356.170	6371.89	4574.67	4566.11	290.01	40°23'20.172"N	104°24'27.072"W	0.53	
10435.00	90.400	354.140	6371.33	4660.91	4652.79	282.66	40°23'21.028"N	104°24'27.167"W	2.33	
10523.00	90.340	354.150	6370.76	4747.94	4740.33	273.68	40°23'21.893"N	104°24'27.283"W	0.07	
10611.00	90.430	356.040	6370.17	4835.16	4828.00	266.16	40°23'22.759"N	104°24'27.381"W	2.15	
10700.00	90.490	357.630	6369.45	4923.69	4916.86	261.25	40°23'23.638"N	104°24'27.444"W	1.79	



Actual Wellpath Report

NORTH PLATTE J-F-23HNB AWP

Page 6 of 9



REFERENCE WELLPATH IDENTIFICATION

Operator	BONANZA CREEK OIL COMPANY	Slot	SLOT#14 NORTH PLATTE J-F-23HNB (396'FNL & 1080'FWL, SEC.26)
Area	COLORADO	Well	NORTH PLATTE J-F-23HNB
Field	WELD COUNTY	Wellbore	NORTH PLATTE J-F-23HNB AWB
Facility	SEC.26-T5N-R63W		

WELLPATH DATA (125 stations)

MD [ft]	Inclination [°]	Azimuth [°]	TVD [ft]	Vert Sect [ft]	North [ft]	East [ft]	Latitude	Longitude	DLS °/100ft	Comments
10789.00	90.120	358.350	6368.98	5012.40	5005.80	258.12	40°23'24.516"N	104°24'27.484"W	0.91	
10876.00	90.520	359.870	6368.49	5099.22	5092.79	256.77	40°23'25.376"N	104°24'27.502"W	1.81	
10963.00	90.030	0.700	6368.07	5186.15	5179.79	257.21	40°23'26.236"N	104°24'27.496"W	1.11	
10985.00	89.910	0.600	6368.09	5208.13	5201.79	257.46	40°23'26.453"N	104°24'27.493"W	0.71	LAST BHGE MWD SURVEY
11010.00	89.910	0.600	6368.12	5233.12	5226.78	257.72	40°23'26.700"N	104°24'27.490"W	0.00	PROJECTION TO BIT, 5.5"CASING/BHL (NENW, SEC.26-T05N-R63W, 469'FNL & 1406'FWL, SEC.23)

HOLE & CASING SECTIONS - Ref Wellbore: NORTH PLATTE J-F-23HNB AWB Ref Wellpath: NORTH PLATTE J-F-23HNB AWP

String/Diameter	Start MD [ft]	End MD [ft]	Interval [ft]	Start TVD [ft]	End TVD [ft]	Start N/S [ft]	Start E/W [ft]	End N/S [ft]	End E/W [ft]
13.5in Open Hole	17.00	523.00	506.00	17.00	522.95	0.00	0.00	2.31	5.89
8.5in Open Hole	523.00	11010.00	10487.00	522.95	6368.12	2.31	5.89	5226.78	257.72



Actual Wellpath Report

NORTH PLATTE J-F-23HNB AWP

Page 7 of 9



REFERENCE WELLPATH IDENTIFICATION

Operator	BONANZA CREEK OIL COMPANY	Slot	SLOT#14 NORTH PLATTE J-F-23HNB (396'FNL & 1080'FWL, SEC.26)
Area	COLORADO	Well	NORTH PLATTE J-F-23HNB
Field	WELD COUNTY	Wellbore	NORTH PLATTE J-F-23HNB AWB
Facility	SEC.26-T5N-R63W		

TARGETS

Name	TVD [ft]	North [ft]	East [ft]	Grid East [US ft]	Grid North [US ft]	Latitude	Longitude	Shape
SEC.23-T05N-R63W	-3.00	-100.04	-0.81	3304075.56	1381735.41	40°22'34.062"N	104°24'30.831"W	polygon
SEC.26-T05N-R63W	-3.00	-100.04	-0.81	3304075.56	1381735.41	40°22'34.062"N	104°24'30.831"W	polygon
NORTH PLATTE J-F-23HNB BHL REV-2 (470'FNL & 1403'FWL, SEC.23)	6371.00	5226.87	244.00	3304254.78	1387064.71	40°23'26.701"N	104°24'27.667"W	point
NORTH PLATTE J-F-23HNB TARGET REV-4 (589'FSL & 1455'FWL, SEC.23)	6371.00	980.33	370.00	3304433.03	1382820.22	40°22'44.738"N	104°24'26.039"W	point
NORTH PLATTE J-F-23HNB BHL REV-1 (470'FNL & 1403'FWL, SEC.23)	6379.00	5226.87	244.00	3304254.78	1387064.71	40°23'26.701"N	104°24'27.667"W	point
NORTH PLATTE J-F-23HNB TARGET REV-1 (589'FSL & 1736'FWL, SEC.23)	6379.00	980.30	651.16	3304714.16	1382823.64	40°22'44.738"N	104°24'22.406"W	point
NORTH PLATTE J-F-23HNB TARGET REV-2 (589'FSL & 1436'FWL, SEC.23)	6379.00	980.33	351.16	3304414.19	1382819.98	40°22'44.738"N	104°24'26.283"W	point
NORTH PLATTE J-F-23HNB TARGET REV-3 (589'FSL & 1455'FWL, SEC.23)	6379.00	980.33	370.00	3304433.03	1382820.22	40°22'44.738"N	104°24'26.039"W	point
SEC.23-T05N-R63W 460' SETBACK	6555.00	-100.04	-0.81	3304075.56	1381735.41	40°22'34.062"N	104°24'30.831"W	polygon
SEC.26-T05N-R63W 460' SETBACK	6555.00	-100.04	-0.81	3304075.56	1381735.41	40°22'34.062"N	104°24'30.831"W	polygon



Actual Wellpath Report

NORTH PLATTE J-F-23HNB AWP

Page 8 of 9



REFERENCE WELLPATH IDENTIFICATION			
Operator	BONANZA CREEK OIL COMPANY	Slot	SLOT#14 NORTH PLATTE J-F-23HNB (396'FNL & 1080'FWL, SEC.26)
Area	COLORADO	Well	NORTH PLATTE J-F-23HNB
Field	WELD COUNTY	Wellbore	NORTH PLATTE J-F-23HNB AWB
Facility	SEC.26-T5N-R63W		

WELLPATH COMPOSITION - Ref Wellbore: NORTH PLATTE J-F-23HNB AWB Ref Wellpath: NORTH PLATTE J-F-23HNB AWP				
Start MD [ft]	End MD [ft]	Positional Uncertainty Model	Log Name/Comment	Wellbore
17.00	1613.00	Custom BHI NaviTrak (Standard Rotating) (Rockies 0.03Gt model)	BHI MWD NAVITRAK+SR+ROCKIES <121-1613>	NORTH PLATTE J-F-23HNB AWB
1613.00	10985.00	Custom BHI AutoTrak Curve (Axial Corr, Short spacing) (Rockies 0.03Gt model)	BHI ATCURVE +AC+SS+ROCKIES <1757-10985>	NORTH PLATTE J-F-23HNB AWB
10985.00	11010.00	Blind Drilling (std)	Projection to bit	NORTH PLATTE J-F-23HNB AWB



Actual Wellpath Report

NORTH PLATTE J-F-23HNB AWP

Page 9 of 9



REFERENCE WELLPATH IDENTIFICATION

Operator	BONANZA CREEK OIL COMPANY	Slot	SLOT#14 NORTH PLATTE J-F-23HNB (396'FNL & 1080'FWL, SEC.26)
Area	COLORADO	Well	NORTH PLATTE J-F-23HNB
Field	WELD COUNTY	Wellbore	NORTH PLATTE J-F-23HNB AWB
Facility	SEC.26-T5N-R63W		

WELLPATH COMMENTS

MD [ft]	Inclination [°]	Azimuth [°]	TVD [ft]	Comment
121.00	0.700	63.770	121.00	FIRST BHGE MWD SURVEY
6660.00	84.328	0.512	6367.00	TOP OF PRODUCTION (SESW, SEC.23-T05N-R63W, 489'FSL & 1456'FWL, SEC.23)
10985.00	89.910	0.600	6368.09	LAST BHGE MWD SURVEY
11010.00	89.910	0.600	6368.12	PROJECTION TO BIT, 5.5"CASING/BHL (NENW, SEC.26-T05N-R63W, 469'FNL & 1406'FWL, SEC.23)