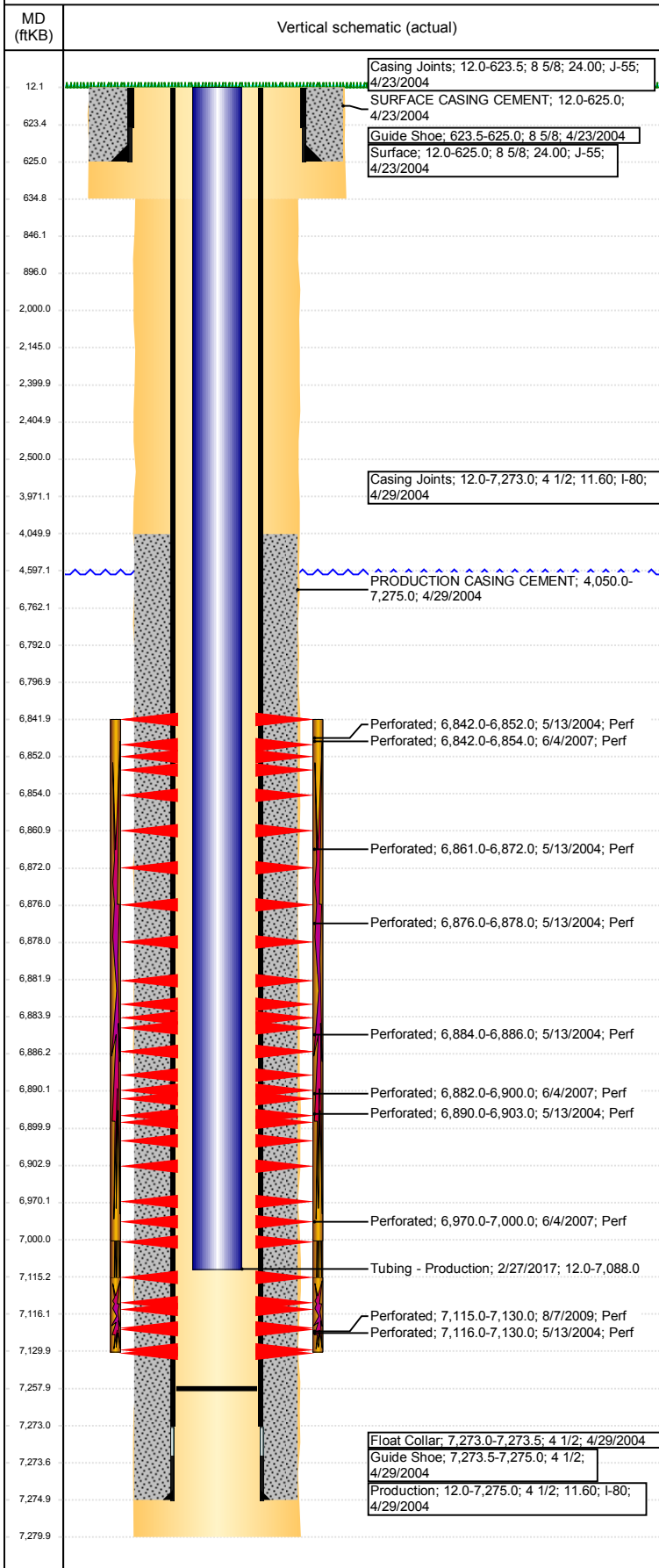


Well Name: SARCHET 16-22

VERTICAL - ORIGINAL HOLE, 12/18/2017 10:45:24 AM



Well Header

API 05-123-22138	Business Unit DJ BASIN	District 15	Well Config VERTICAL
Original KB Elevation (ft) 4,817	KB - GL / MSL (ftKB) 12.00	Spud Date 4/22/2004	P & A Date

Comment

Directions To Well

CR 43 AND 30 EAST 1 MILE NORTH THROUGH GREEN GATES 300' TO A&W'S PUMP WEST 250' INTO

Congressional Location

Quarter 3 SE	Quarter 4 SE	Section 22	Township 3	Twnshp N/S Dir N	Range 65	Range E/W Dir W
-----------------	-----------------	---------------	---------------	---------------------	-------------	--------------------

Bottom Hole Location

North-South Distance (ft)	From N or S Line	East-West Distance (ft)	From E or W Line
---------------------------	------------------	-------------------------	------------------

Plug Back Total Depths

Date	Depth (ftKB)	Method	Com
4/29/2004	7,259.0	TAG	FLOAT COLLAR ON DRL RPTS
5/13/2004	7,246.0	CASED HOLE LOG	DEPTH LOGGER ON CBL
5/25/2004	7,258.0	TAG	CLEAN OUT TO LAND TUBING
2/24/2017	7,258.0	TAG	CLEAN OUT F/ 7152 TO 7258

Wellbore Sections

Section Des	Size (in)	Act Top, MD (ftKB)	Act Btm, MD (ftKB)
SURFACE	12 1/4	12	635
PRODUCTION	7 7/8	635	7,280

Zone Statuses

Zone Name	Status Date	Status	Fluid Type	Job	Prod Method
NIOBRARA	6/1/2004	PR		DRILLING/CO...	
NIOBRARA	7/12/2007	PR		RE-FRAC, 5/29...	
CODELL	6/1/2004	PR		DRILLING/CO...	
CODELL	6/4/2007	SI		RE-FRAC, 5/29...	
CODELL	7/12/2007	PR		RE-FRAC, 5/29...	
CODELL	8/17/2009	PR		RE-FRAC, 7/28...	

Casing Strings

Surface, 625.0ftKB

Casing Description	Run Date	OD (in)	Wt/Len (l...)	Grade	Top, MD (ft...)	MD (ftKB)
Surface	4/23/2004	8 5/8	24.00	J-55	12.0	625.0

Production, 7,275.0ftKB

Casing Description	Run Date	OD (in)	Wt/Len (l...)	Grade	Top, MD (ft...)	MD (ftKB)
Production	4/29/2004	4 1/2	11.60	I-80	12.0	7,275.0

Cement

Description	Top Depth (ftKB)	Bottom Depth (ftKB)
SURFACE CASING CEMENT	12.0	625.0
PRODUCTION CASING CEMENT	4,050.0	7,275.0
Dump Bail	6,762.0	6,792.0
Balance Plug	3,971.0	4,597.0
Casing Repair Cement	2,000.0	2,500.0
Cement Plug	2,145.0	2,400.0
Cement Plug	2,405.0	2,500.0
Shoe Plug	846.0	896.0
Shoe Plug	625.0	635.0
Shoe Plug	635.0	846.0
Shoe Plug	12.0	625.0

Tubing Strings

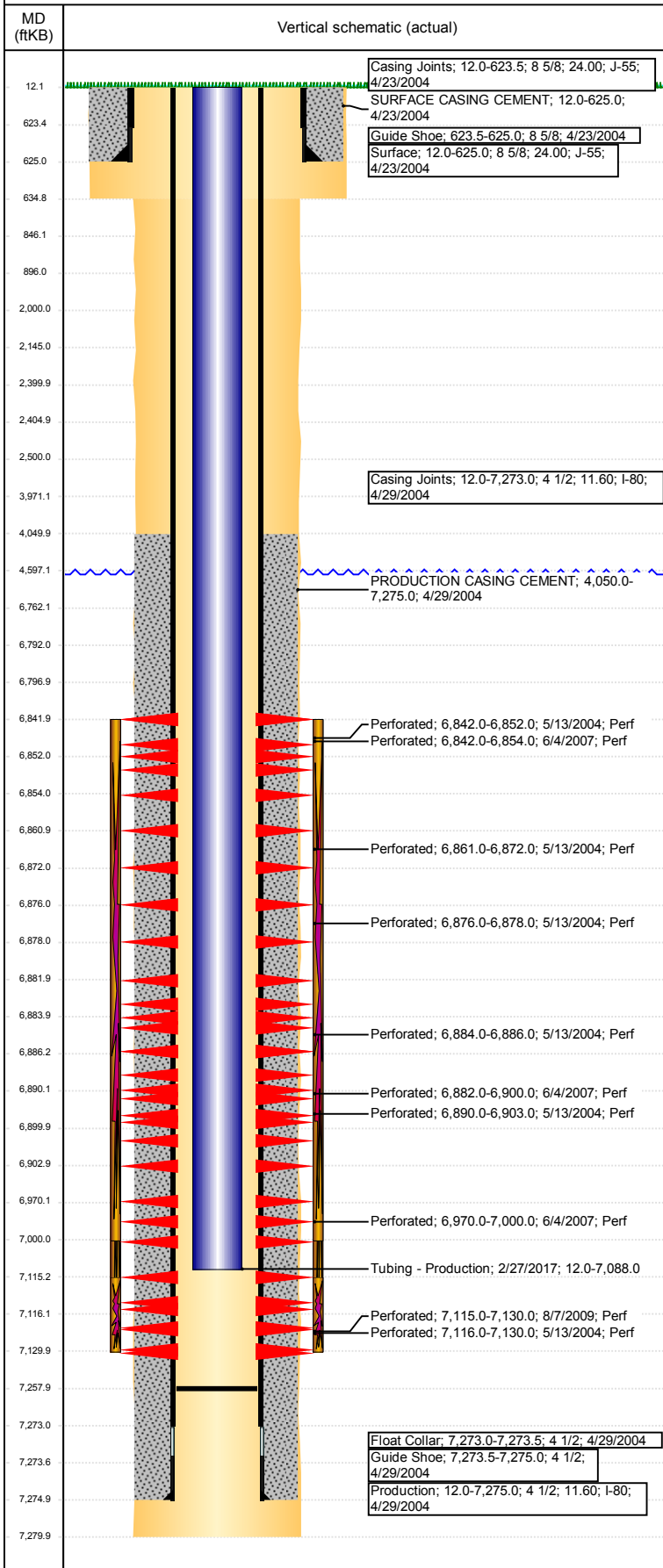
Tubing Description	Run Date	String...	ID (in)	Wt (lb/ft)	Grade	Len (ft)	Set De...
Tubing	10/8/2009	2 3/8	2.00	4.70	J-55	7,075.00	

Tubing Components

Item Des	OD (in)	Wt (lb/ft)	Grade	Jts	Len (ft)	Btm (ftKB)	Btm (TVD) (ftKB)
EUE 8rd Tubing	2 3/8	4.70	J-55	228	7,073.50	7,085.5	

Well Name: SARCHET 16-22

VERTICAL - ORIGINAL HOLE, 12/18/2017 10:45:24 AM



Tubing Components							
Item Des	OD (in)	Wt (lb/ft)	Grade	Jts	Len (ft)	Btm (ftKB)	Btm (TVD) (ftKB)
Seal Nipple	2 3/8			1	1.00	7,086.5	
Notched collar	2 3/8			1	0.50	7,087.0	
Tubing Description	Run Date	String...	ID (in)	Wt (lb/ft)	Grade	Len (ft)	Set De...
Tubing - Production	8/15/2014	2 3/8	2.00	4.70	J-55	7,075.00	

Tubing Components							
Item Des	OD (in)	Wt (lb/ft)	Grade	Jts	Len (ft)	Btm (ftKB)	Btm (TVD) (ftKB)
EUE 8rd Tubing	2 3/8	4.70	J-55	228	7,073.50	7,085.5	
Pump Seating Nipple	2 3/8	1.10		1	1.00	7,086.5	
Notched collar	2 3/8			1	0.50	7,087.0	
Tubing Description	Run Date	String...	ID (in)	Wt (lb/ft)	Grade	Len (ft)	Set De...
Tubing - Production	2/27/2017	2 3/8	2.00	4.70	J-55	7,075.97	

Tubing Components							
Item Des	OD (in)	Wt (lb/ft)	Grade	Jts	Len (ft)	Btm (ftKB)	Btm (TVD) (ftKB)
EUE 8rd Tubing	2 3/8	4.70	J-55	228	7,074.32	7,086.3	
Profile Nipple XN	2 3/8			1	1.10	7,087.4	
Notched collar	2 3/8			1	0.55	7,088.0	

Other In Hole				
Run Date	Des	OD (in)	Top (ftKB)	Btm (ftKB)
9/11/2017	Cement Retainer	4	2,400.0	2,405.0
	Cast Iron Bridge Plug	4	6,792.0	6,797.0

Logs			
Date	Type	Top, MD (ftKB)	Btm, MD (ftKB)
4/29/2004	CEMENT VOLUME	626.0	7,272.0
4/29/2004	COMPENSATED NEUTRON	4,000.0	7,262.0
4/29/2004	INDUCTION	626.0	7,272.0
5/13/2004	CEMENT BOND	3,850.0	7,242.0
2/23/2012	GYRO	0.0	7,000.0

Perforation Data					
Linked Zone	Bnch/St g	Sum of Entered Shot Total	Top (ftKB)	Btm (ftKB)	Date
		0	2,500.00	2,500.00	9/11/2017
NIOBRARA, ORIGINAL HOLE	A	36	6,842.00	6,854.00	6/4/2007
NIOBRARA, ORIGINAL HOLE	A	10	6,842.00	6,852.00	5/13/2004
NIOBRARA, ORIGINAL HOLE	B	11	6,861.00	6,872.00	5/13/2004
NIOBRARA, ORIGINAL HOLE	B	2	6,876.00	6,878.00	5/13/2004
NIOBRARA, ORIGINAL HOLE	B	45	6,882.00	6,900.00	6/4/2007
NIOBRARA, ORIGINAL HOLE	B	2	6,884.00	6,886.00	5/13/2004
NIOBRARA, ORIGINAL HOLE	B	11	6,890.00	6,903.00	5/13/2004
NIOBRARA, ORIGINAL HOLE	C	30	6,970.00	7,000.00	6/4/2007
CODELL, ORIGINAL HOLE		30	7,115.00	7,130.00	8/7/2009
CODELL, ORIGINAL HOLE		28	7,116.00	7,130.00	5/13/2004

Total (Sum)	205			
--------------------	------------	--	--	--

Stimulation Intervals		
Start Date	Primary Job Type	
5/17/2004	DRILLING/COMPLETION - ORIGINAL	
Technical Result	Tech Result Details	Tech Result Note
Comment		
Start Date	Primary Job Type	
6/7/2007	RE-FRAC	
Technical Result	Tech Result Details	Tech Result Note
Comment		
Start Date	Primary Job Type	
8/13/2009	RE-FRAC	
Technical Result	Tech Result Details	Tech Result Note
Comment		